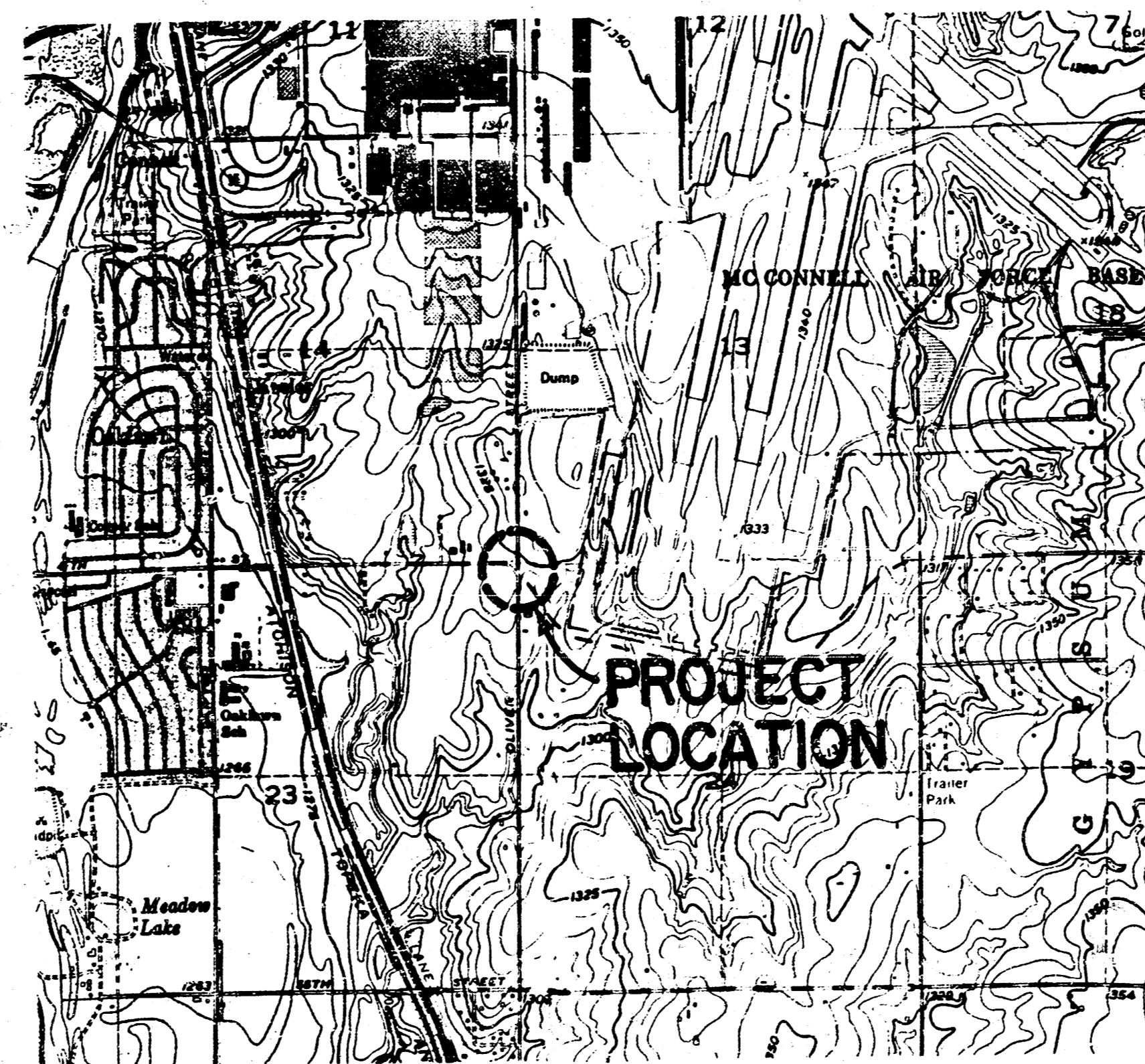


PLANS
FOR
SANITARY SEWER SYSTEM
JACK CALDWELL ONE
SEDGWICK COUNTY, KANSAS

CITY OF WICHITA PRIVATE PROJECT NO. 607861-204PPS

1989

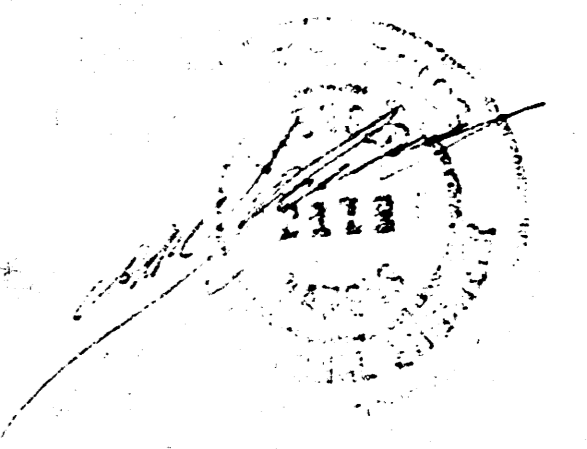
"AS CONSTRUCTED"



APPROVED AS NOTED
By CITY ENGINEER OF WICHITA
Sanitary Sewers 408 3/22/89
Storm Sewers _____
Driveway Approaches _____
Water Mains _____
Paving _____

NOTE TO CONTRACTOR
INSPECTION AND TESTING FOR THIS PROJECT IS TO BE PROVIDED BY A LICENSED CONSULTING ENGINEERING FIRM UNDER CONTRACT WITH THE OWNER/DEVELOPER. SAID INSPECTION TO BE IN ACCORDANCE WITH THE CITY OF WICHITA STANDARD CONSTRUCTION ENGINEERING PRACTICES AND CERTIFIED BY LICENSED PROFESSIONAL ENGINEER. NO WORK SHALL BE PERFORMED IN DEDICATED EASEMENTS OR THE PUBLIC RIGHT-OF-WAY BY THE CONTRACTOR WITHOUT SUCH INSPECTION. NO SHALL ANY WORK BE CONSIDERED IN DEDICATED EASEMENTS OR PUBLIC RIGHT-OF-WAY WITHOUT WRITTEN AUTHORIZATION BY THE CITY ENGINEER.

*Booked
RDL*



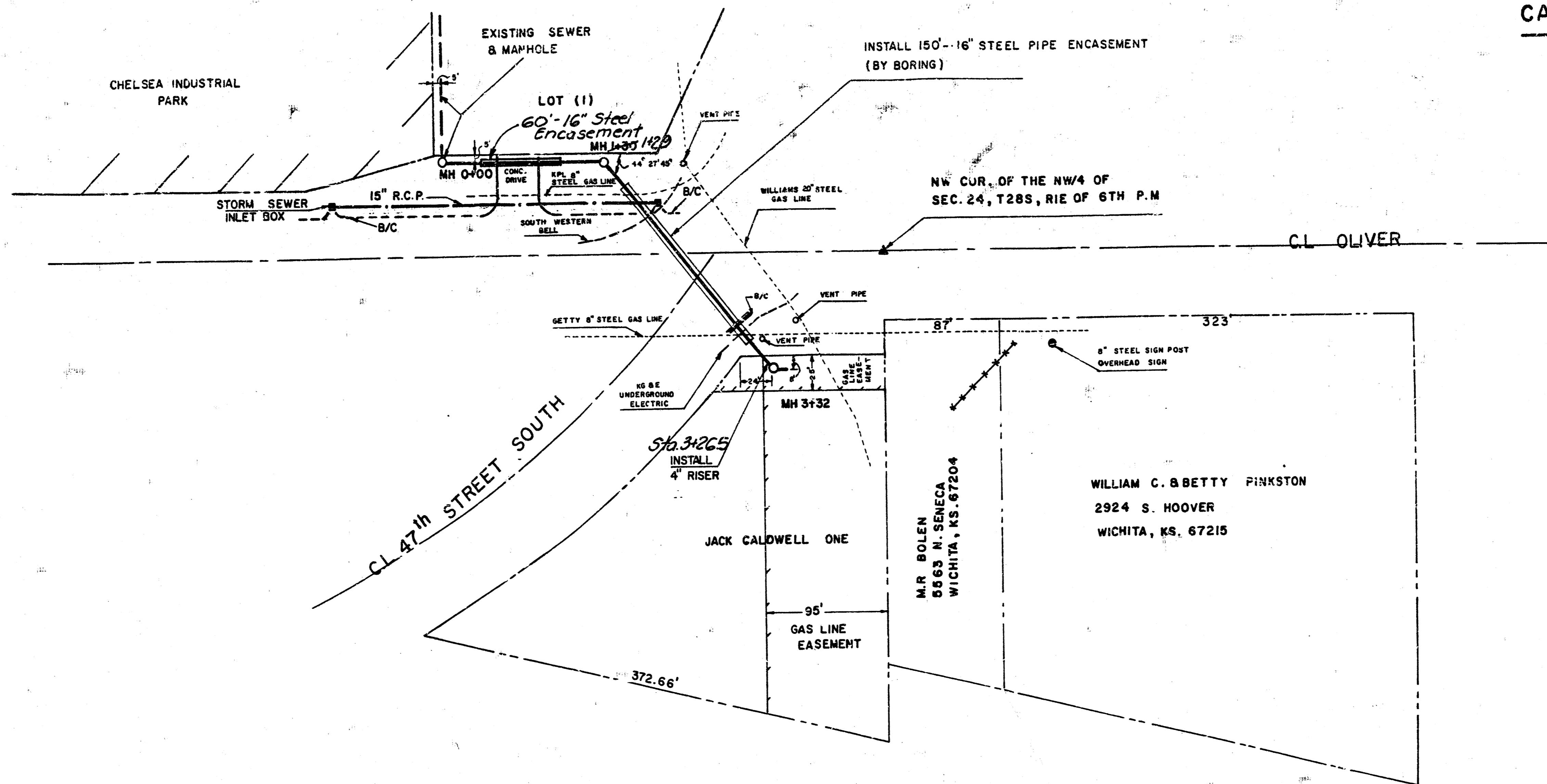
DEISS & GOODNESS ENGINEERS
2100 WEST 21ST STREET
WICHITA, KANSAS 67203
(913) 832-0218

REVISION	DRAWN BY	CHECKED BY	DESIGNED BY	PROJECT

SCALE _____ PROJECT NO. _____
DATE _____ SHEET 1 OF 3

**FILMED FROM THE BEST
AVAILABLE COPY**

BM=TOP RING MH 0+00 = 10+11
 CHELSEA INDUSTRIAL PARK
 ELEV. 1316.84

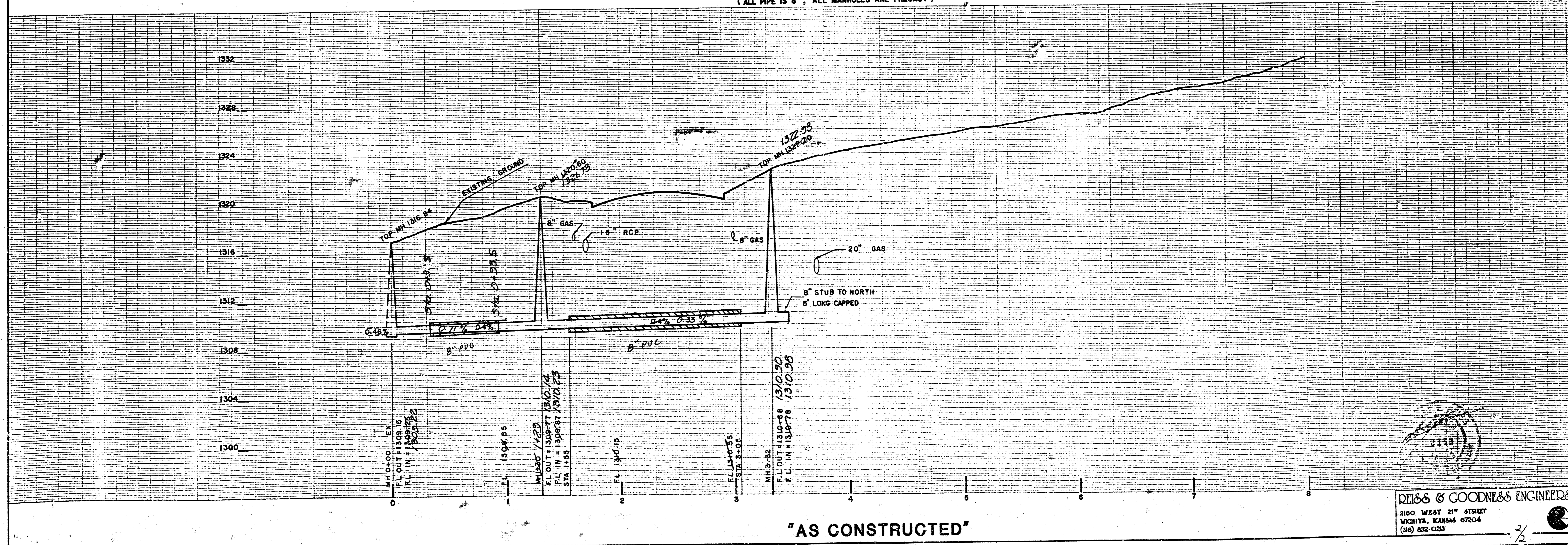


CAUTION
 CONTRACTOR TO LOCATE
 ALL EXISTING UTILITIES
 PRIOR TO EXCAVATION.



SCALE
 PLAN. 1"=60'
 PROFILE
 HORZ. 1"=40'
 VERT. 1"=4'

(ALL PIPE IS 8", ALL MANHOLES ARE PRECAST)



"AS CONSTRUCTED"

REISS & GOODNESS ENGINEERS
 2100 WEST 21ST STREET
 WICHITA, KANSAS 67204
 (316) 832-0233

REVISION	DRAWN BY	CHECKED BY	DESIGNED BY	PROJECT	CUSTOMER	SCALE	PROJECT NO.
				SANITARY SEWER EXTENTION	JACK CALDWELL ONE		
						DATE	SHEET 2 OF 3

FILMED FROM THE BEST
 AVAILABLE COPY