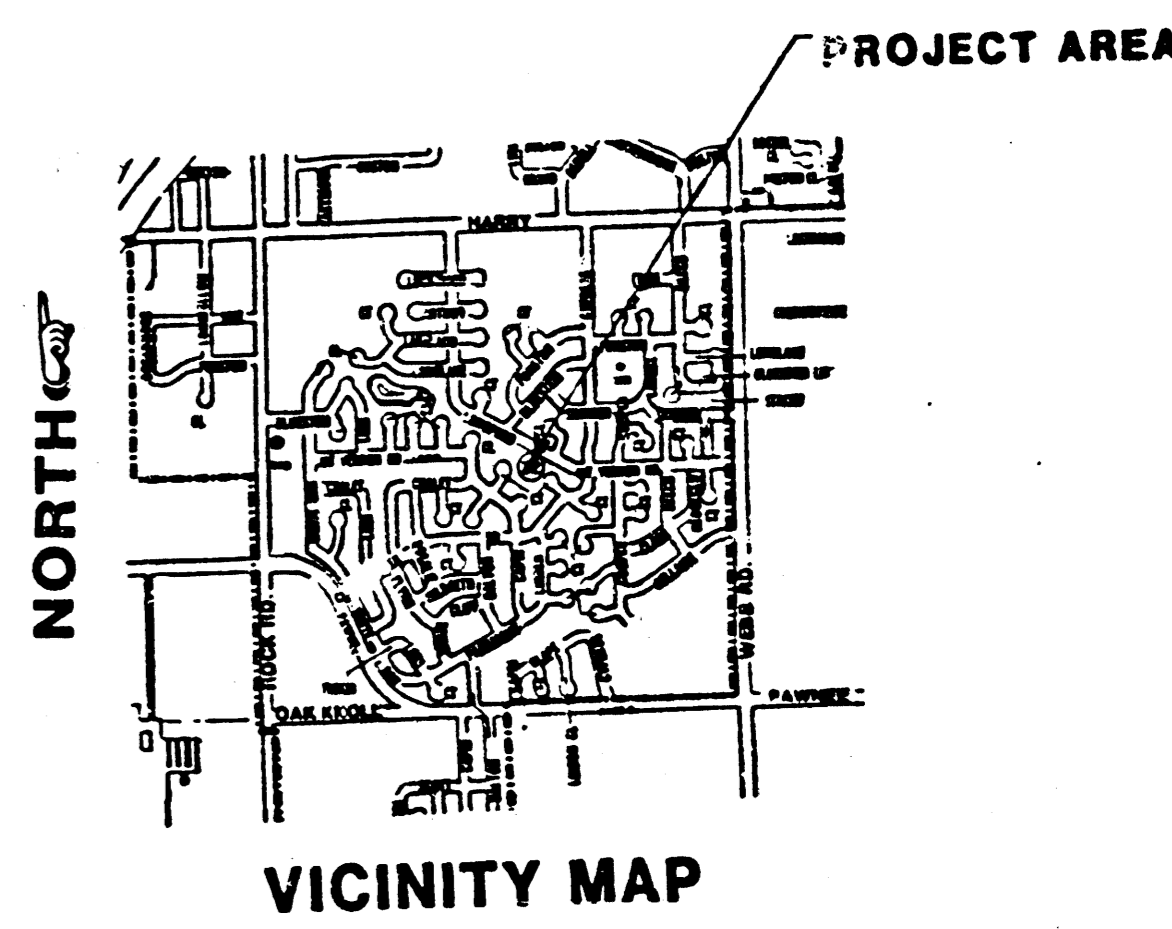
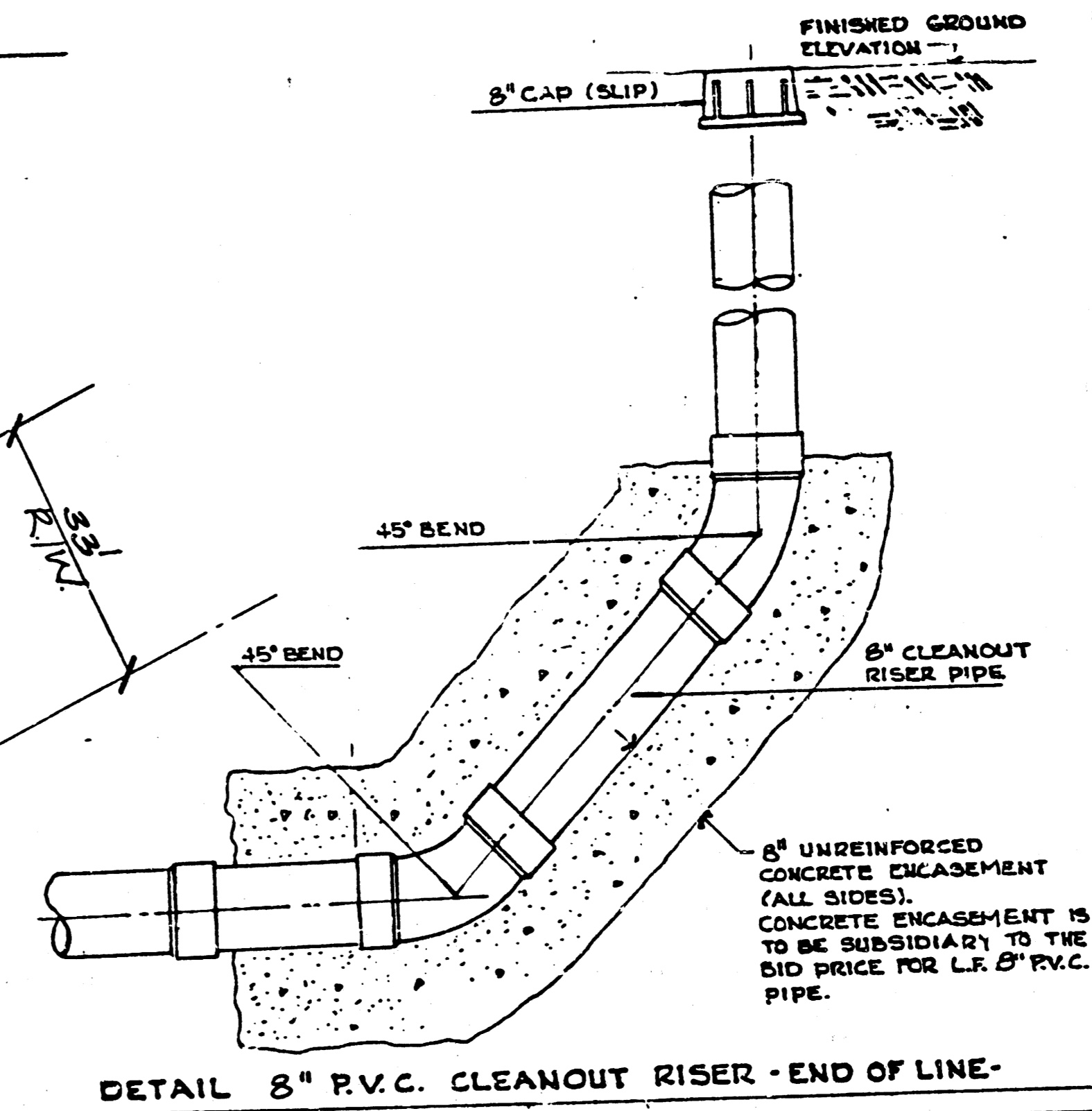
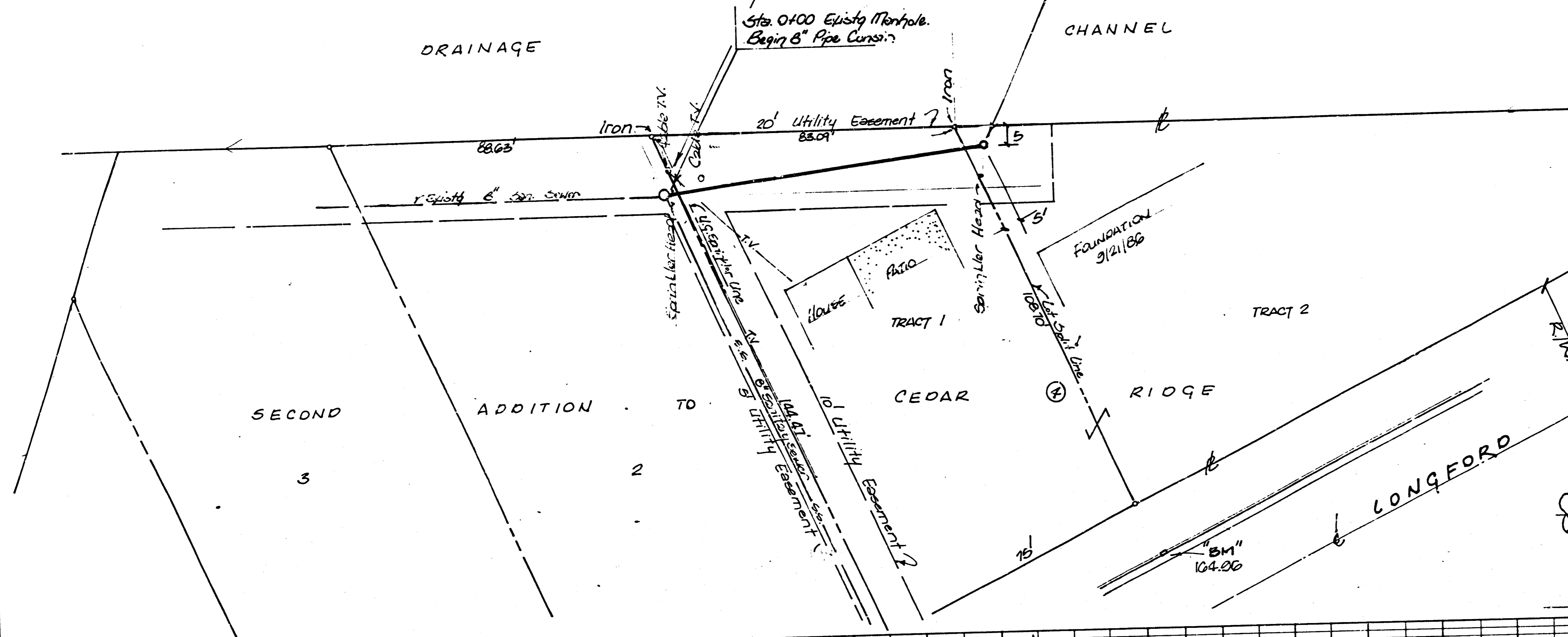
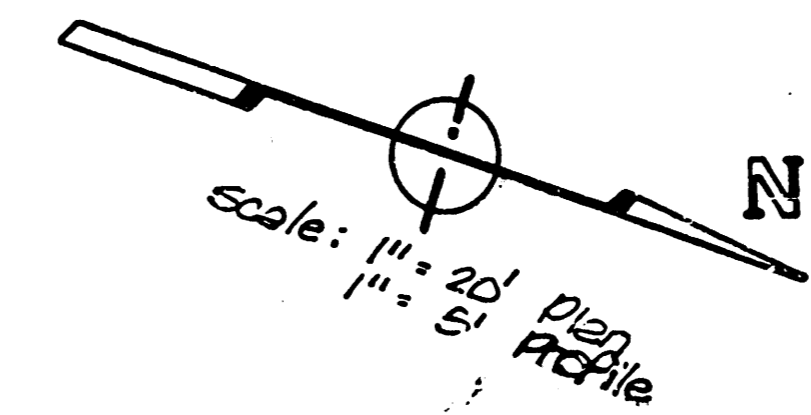


GENERAL NOTES

- Contractor shall contact the following before any excavation:
 - Kansas One-Call 1-800-344-7233
 - Cable Vision 262-4270 or 263-2081
 - K.P. & L. Gas Service Company 263-7511
 - Kansas Gas & Electric 344-1141
 - Arkia Gas Company 942-8250 or 263-8161
 - Southwest Bell Telephone Company 1-877-2611
 - City of Wichita Water Department 268-4508
 - City of Wichita Sewer Maintenance 268-4071
- Underground utility service lines and overhead utility pole lines are to be adjusted as necessary by others prior to construction unless the plans specifically call for their adjustment by the Contractor. Existing utilities and their location, as shown on the plans, represent the best information obtainable for design. The Contractor will be required to work around existing utilities within the right-of-way which do not conflict with proposed construction.
- The Contractor shall be responsible for preserving property irons. The Contractor will be required to re-establish any property irons which are damaged or destroyed by his construction operations. Such irons shall be re-established by a licensed land surveyor or a licensed professional engineer in accordance with state laws.

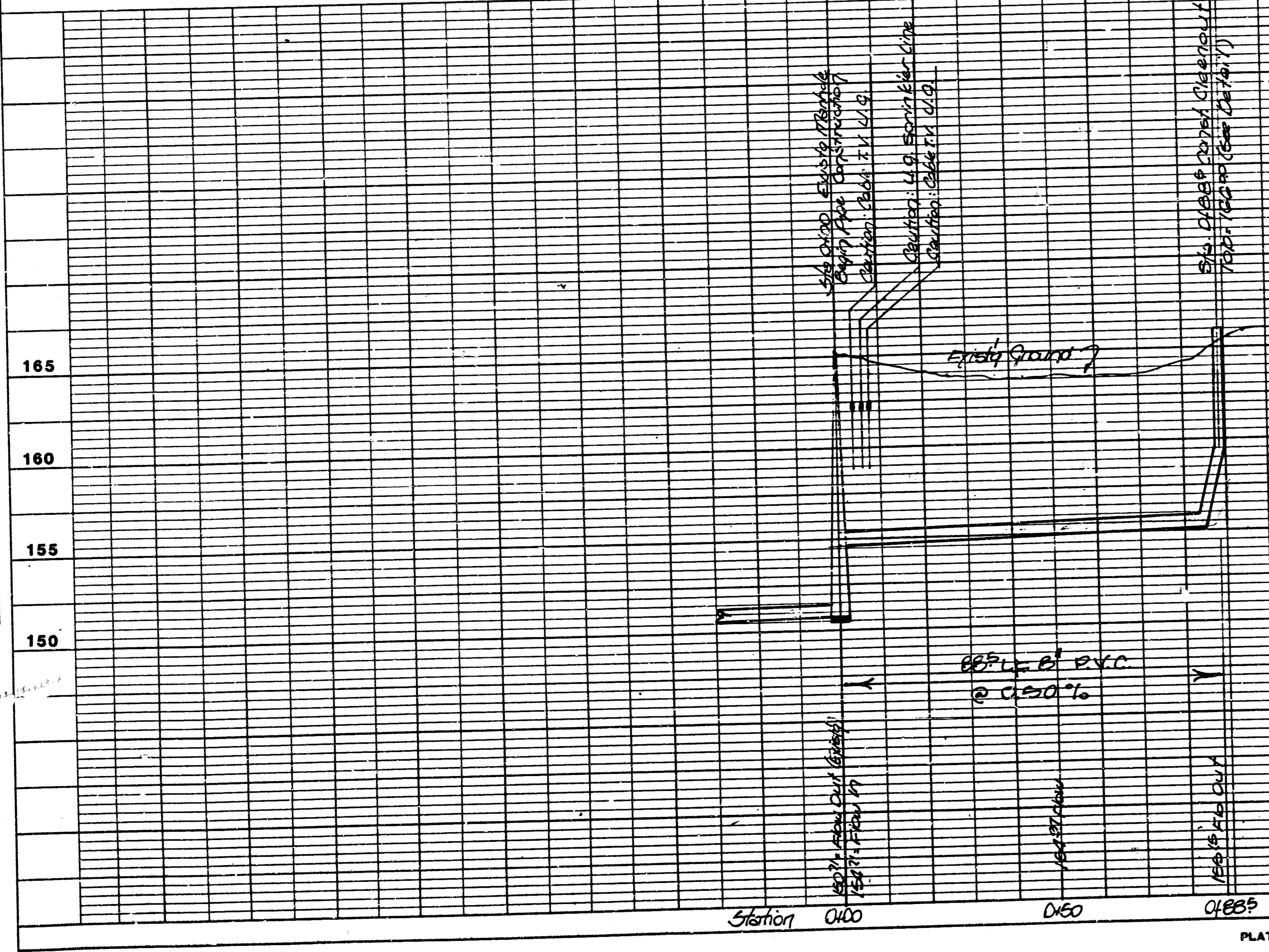
BENCH MARK - Elev. 170.76, City Std Disc. at the South end of the South end of the West headwall of the RCBC on Cypress, South of Cypress Court.

BENCH MARK: 12" in top of Curb between Tract 1 & Tract 2, Block 4, Second Addition to Cedar Ridge, Elevation= 164.26 City Datum



DATE	BY	REVISION

DATE	BY	REVISION



Note: Contractor to Contact Property Owner to Verify Cleanout Top Elevation and Service Line Location

APPROVED FOR THE CITY OF WICHITA
 SANITARY SEWER
 PROJECT NO. 468-76-245-80001-000-083
 DATE: 09/12/1986
 BY: [Signature]
 CHECKED: [Signature]

NOT TO CONTRACTOR
 This contract is for the construction of the City of Wichita, Kansas, and shall conform to the specifications of the City of Wichita, Kansas. The City of Wichita, Kansas, shall be responsible for the design and construction of the project.

SEPT 1986

SANITARY SEWER EXTENSION TO SERVE PART OF LOT 1, BLK. 4, SECOND ADDITION TO CEDAR RIDGE
 CITY OF WICHITA, KANSAS
 PROJECT NO. 468-76-245-80001-000-083
BAUGHMAN COMPANY, P.A.
 SURVEYING & ENGINEERING
 31624-7271 - 316 215 WICHITA, KANSAS 67211