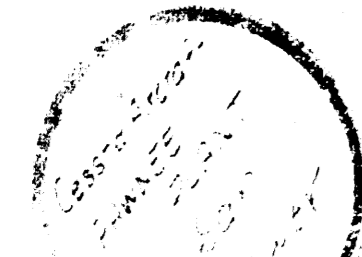


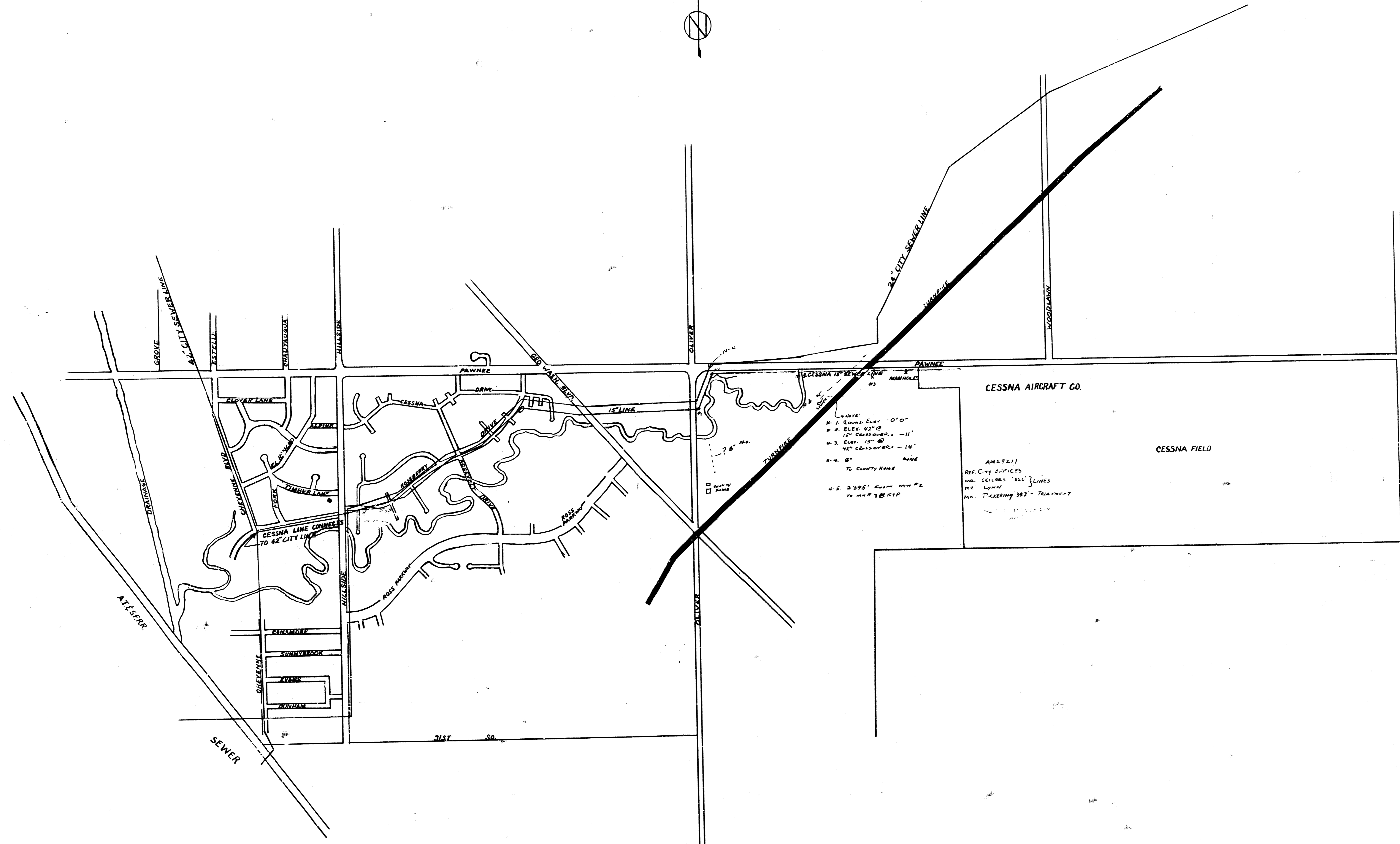
NO.	DESCRIPTION	DATE
1
2
3
4
5
6
7
8
9
10
11
12
13
14
15
16
17
18
19
20

AREA	ACREAGE	LOCATION
1	405	S. OF PAVEMENT 120' x 80' S.
2	3407	S. OF K.T.P. N. OF PAWNEE
3	162.55	W. ADJ. N. QUARTER
4	160	N. OF SILVER HANGAR
5	145	N. OF BLDG. N. OF PAWNEE
6
TOTAL	5242	PAWNEE COMM. DIV.

TOPOGRAPHIC MAP
CESSNA AIRCRAFT PROPERTY
PAWNEE PLANT
WICHITA, KANSAS
 SCALE: 1" = 300'
 H.R. HUNTER - CONSULTING ENGINEERS
 WICHITA, KANSAS
 MAY 1958

REVISIONS:
 SEPT. 1959
 JULY 1967
 APRIL 1962 BY W.C.E.

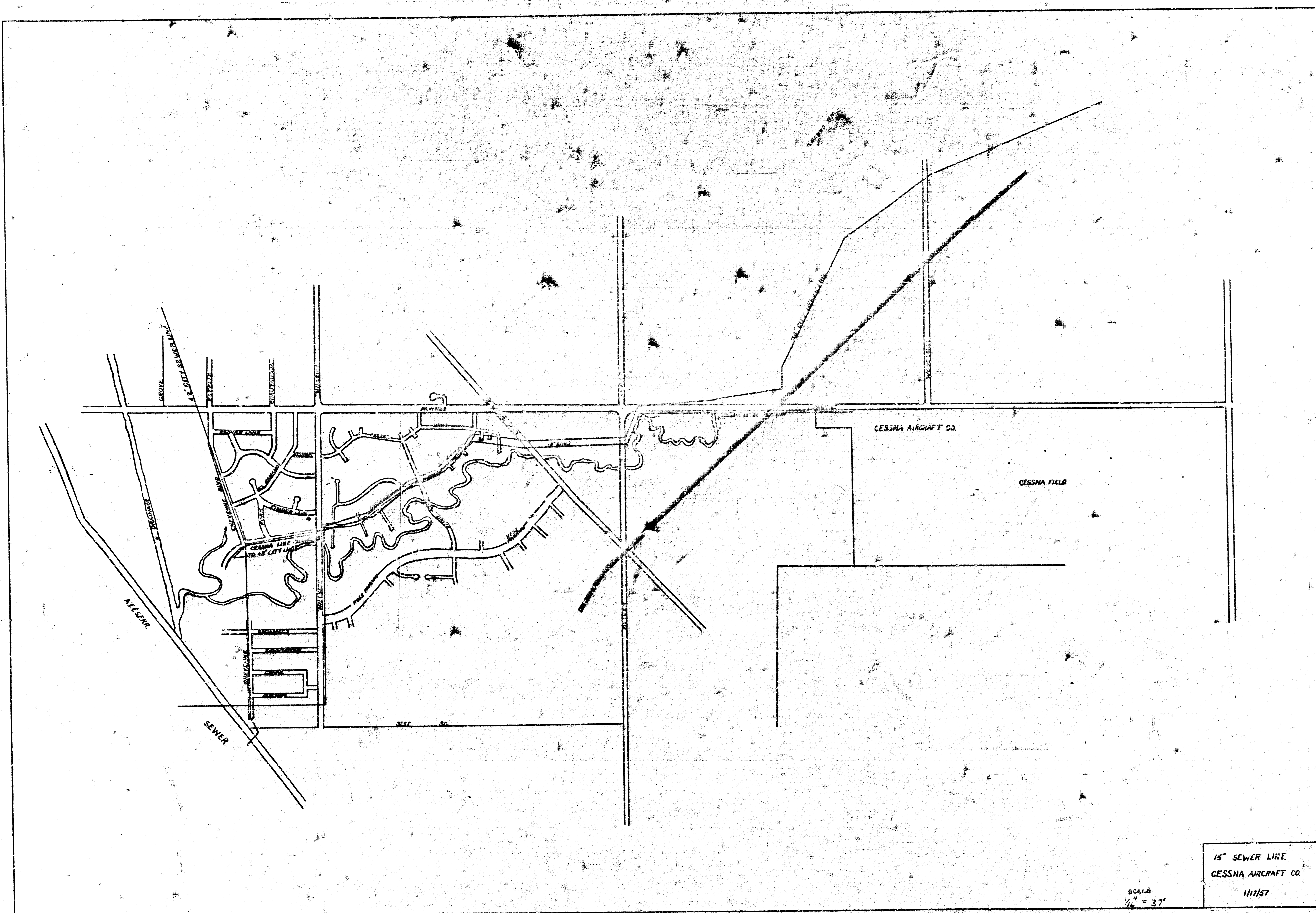




NOTE:
 1. GROUND ELEV. 0'0"
 2. ELEV. 92'0"
 3. ELEV. 15'0"
 4. 8' SIDE
 5. 2.95' FROM M.H. #2
 TO M.H. #3 @ RYP

CESSNA AIRCRAFT CO.
 AMSS/1
 REF. CITY OFFICES
 MR. LYNX
 MR. TICKERING 383 - TOWNSHIP

15" SEWER LINE
 CESSNA AIRCRAFT CO.
 1/17/57



15" SEWER LINE
CESSNA AIRCRAFT CO.
111757

SCALE
1/4" = 37'

SEWER LINES
W B CARTER
1224 N. B.W. Hwy.
PO 3-5363
ON 2-5-58