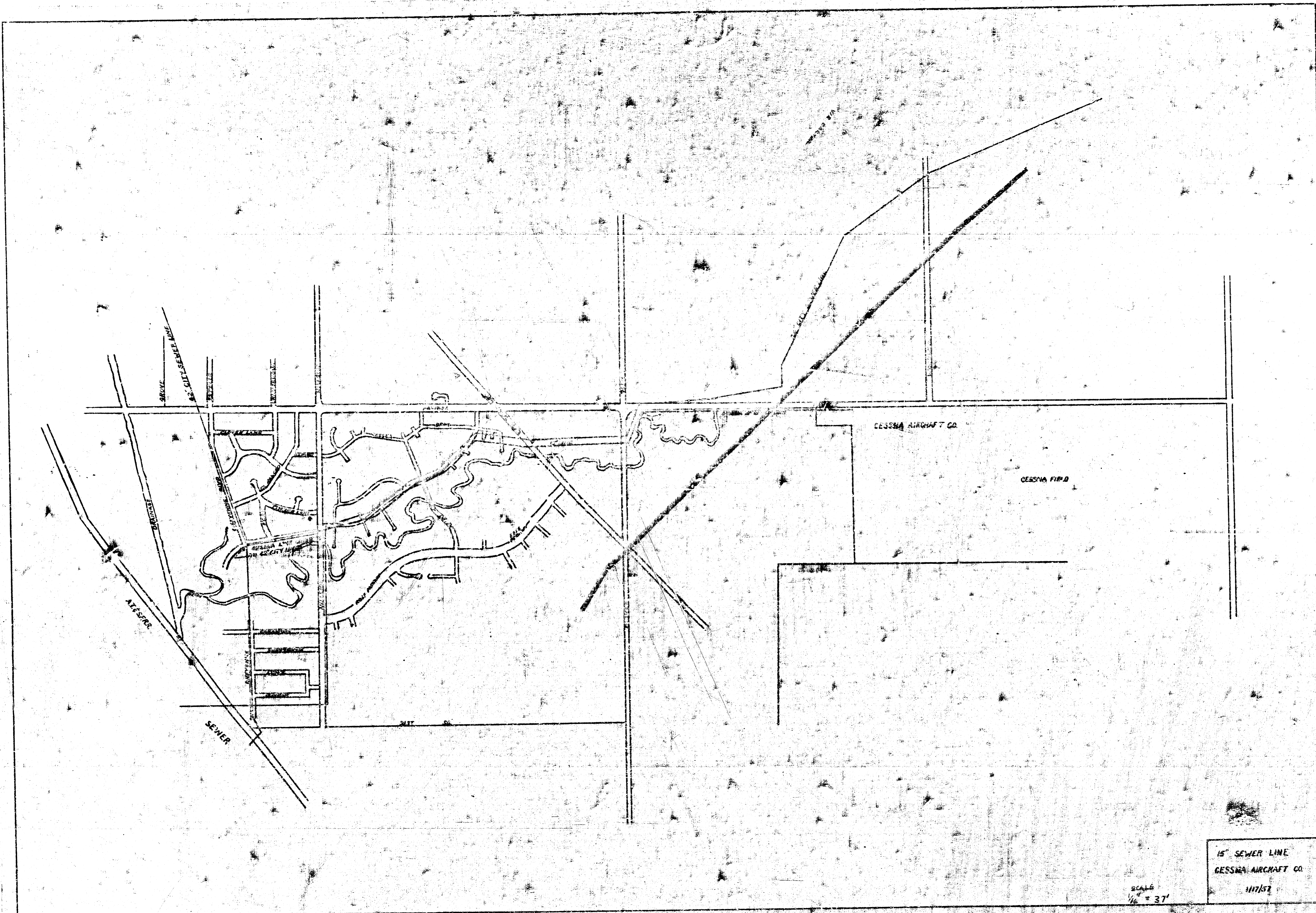


AREA	LOCATION
1	405 S. OF PAWNEE (L&S) 30'-5"
2	84.07 S. OF K.T.P. N. OF PAWNEE
3	162.36 W. ADJ. N. (JUNIOR)
4	143 N. OF SEELY, N. HANNAH
5	143 S. OF HODGKINS
TOTAL	848.86 PAWNEE COMM. DIV.

TOPOGRAPHIC MAP  
**CESSNA AIRCRAFT PROPERTY**  
**PAWNEE PLANT**  
**WICHITA, KANSAS**  
 SCALE: 1" = 300'  
 H.R. HUNTER—CONSULTING ENGINEERS  
 WICHITA, KANSAS  
 MAY 1958 CWC 1000003

Cessna Aircraft  
 Pawnee Plant  
 Survey





15" SEWER LINE  
CESSNA AIRCRAFT CO.  
117152

SCALE  
1/4" = 3'

SEWER LINE  
WB CANTON  
ILL. N. 12-1-53  
PC 35535  
ON 2-5-55