

**SANITARY SEWER AND
STORM WATER SEWER IMPROVEMENTS TO SERVE
CHADSWORTH COMMERCIAL
3RD ADDITION - LOT 1
CITY OF WICHITA, KANSAS**
Michael E. Lindebak, P.E. City Engineer
Private Project Number
785 PPS (607861)

785 PPS

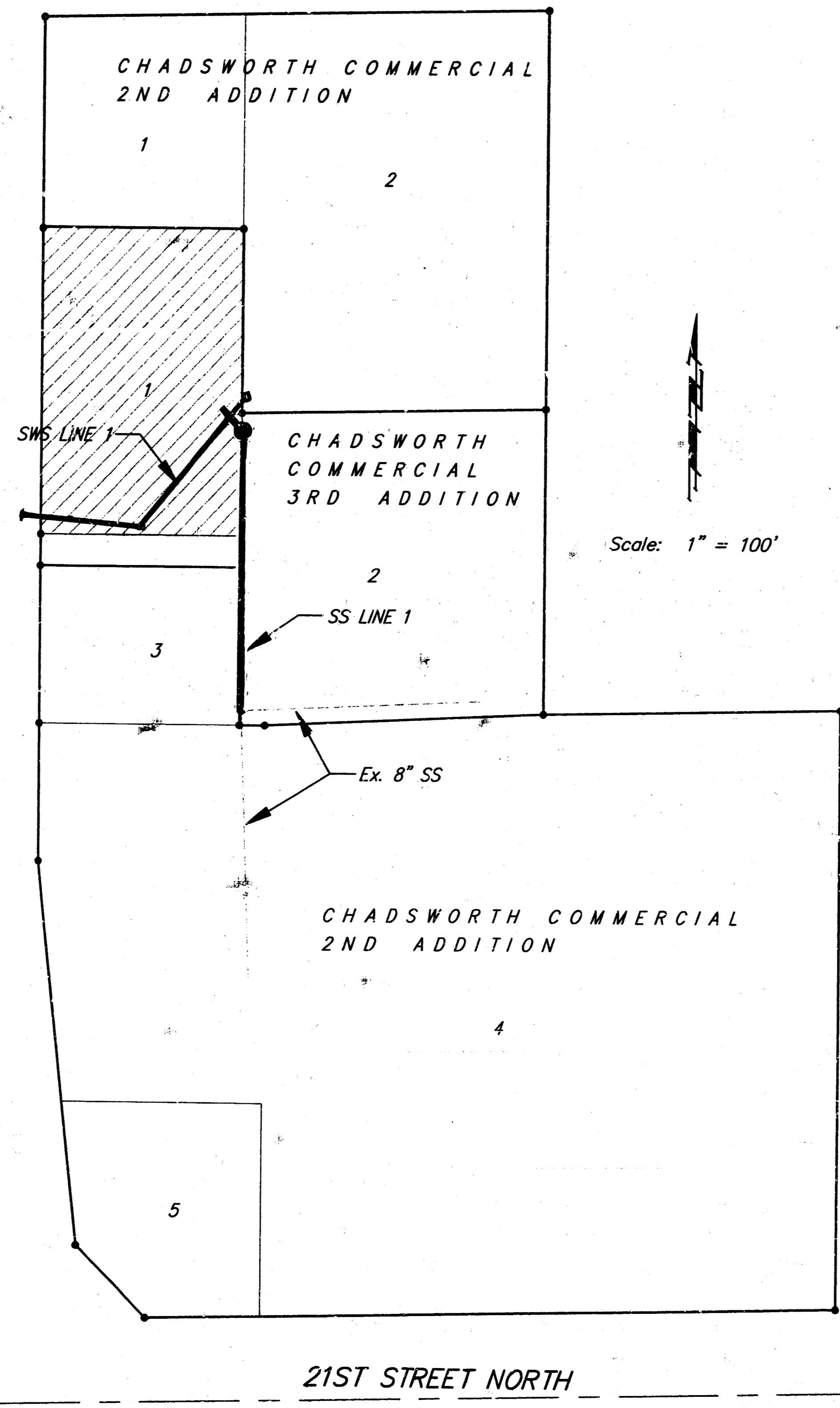
GENERAL NOTES:

- Contractor will be required to provide notice to utility companies a minimum of twenty-four (24) hours prior to any excavation, as follows:

Kansas One-Call	687-2470
-----------------	----------

The Contractor must notify the following in case of an emergency:

Multimedia Cablevision	262-0661
K.P.L. Gas Service Company	383-8650
Kansas Gas & Electric Company	383-8600
Peoples Gas Company	942-8350
Southwestern Bell Telephone Company	1-571-2611
City of Wichita Water Dept.	268-4908
City of Wichita Traffic Engineering	269-4446
- Underground utility service lines and overhead utility pole lines are to be adjusted as necessary by others prior to construction unless the plans specifically call for their adjustment by the Contractor or unless the plans specifically identify a utility to be adjusted by its owner during construction. Existing utilities and their location, as shown on the plans, represent the best information obtainable for design. The Contractor will be required to work around existing utilities within the right-of-way which do not conflict with proposed construction.
- All areas disturbed by construction operations shall be seeded with rye grass at a rate of 300 lbs/acre immediately following construction in that area. Prior to seeding, area shall be prepared per City specs.
- Rubble from the removal of miscellaneous structures and excess excavation which is to be wasted shall be disposed of on sites to be provided by the Contractor. These sites shall be approved by the Engineer as to suitability, appearance and site location. Locations that, in the opinion of the Engineer, will leave an unsightly appearance will not be approved. All disposal sites must be approved by the Kansas Department of Health and Environment. Material either stockpiled or disposed of in a flood plain would require a Kansas State Board of Agriculture permit. Any material dumped in waters of the United States or wetlands is subject to U.S. Corps. of Engineers permitting regulations. Any material buried or stockpiled beyond approved construction limits would require additional archaeological investigations unless buried in a previously approved borrow location.
- Contractor shall not start work on the project until the project inspector is assigned to the project and is present on the site. Any work done without inspection will be required to be uncovered for inspection.
- The Contractor shall be responsible for maintaining continuous flow of sewage through construction. Contractor's proposed method for maintaining sewage flow shall be approved by the Engineer.
- Contractor shall grade the sanitary sewer alignment to the profile and elevations shown on the plan/profile sheet.



APPROVED AS NOTED
BY CITY ENGINEER OF WICHITA

Storm Sewers VRH 4/9/98
Sanitary Sewers VRH 4/9/98

NOTE TO CONTRACTORS

Inspection and testing for this project is to be provided by a Licensed Consulting Engineering Firm under contract with the Owner/Developer. Said inspection is to be in accordance with the City of Wichita standard construction engineering practices and certified by a Licensed Professional Engineer. No work shall be performed in dedicated easements or public right-of-way by the Contractor without such inspection nor shall any work be commenced without written authorization by the City Engineer. All Construction and Materials shall comply with the City of Wichita Specifications and Standards (on file and available in the City Engineer's Office).

Benchmark

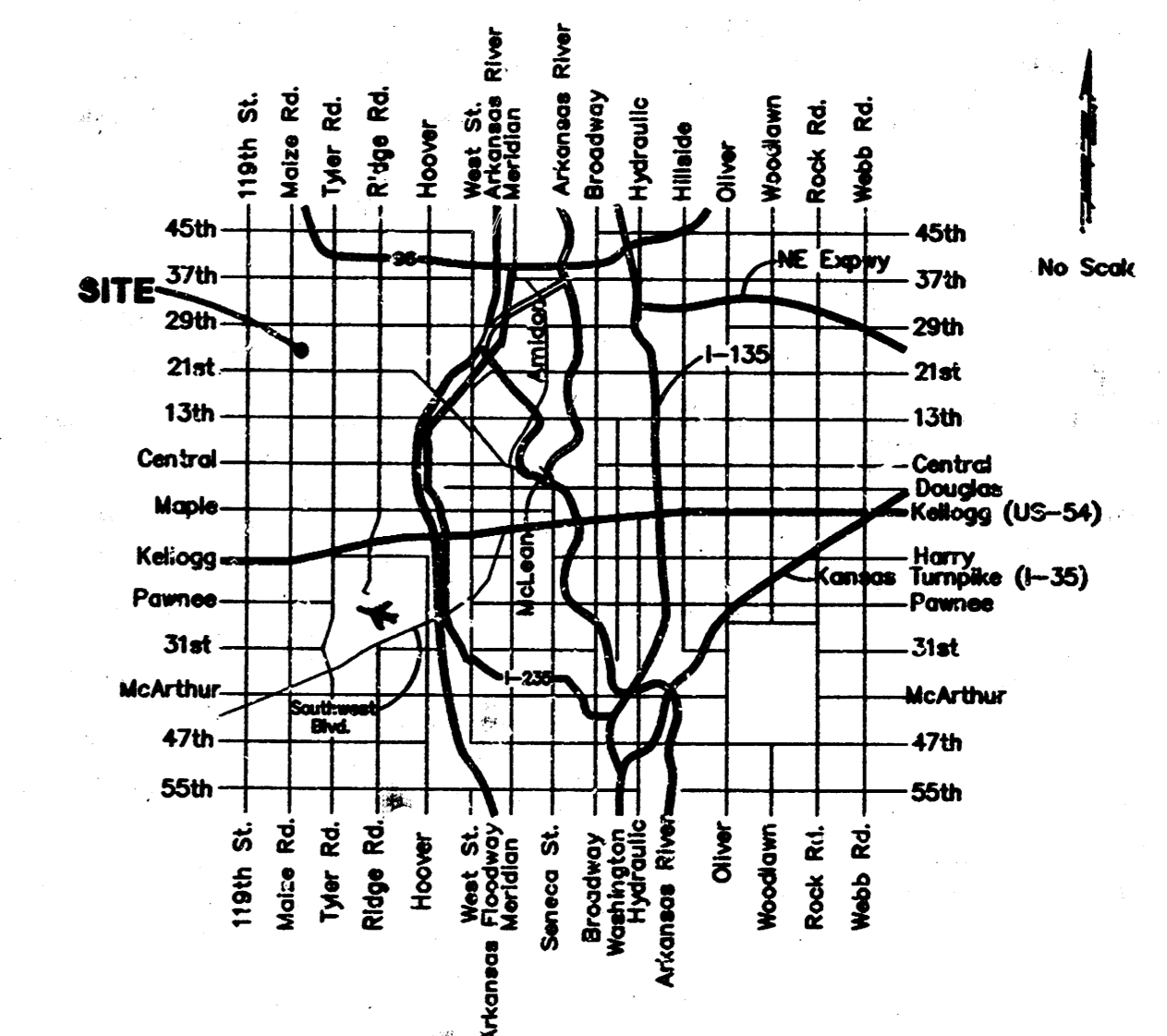
City of Wichita Disk Located
64' East and 99' South of the
Intersection of 21st Street North
and Maize Road.
Elevation = 164.30 (City Datum)

Sheet Index

- Title Sheet
- SWS Line 1
- Standard Type 1 Curb Inlet Detail
- Drop Inlet Detail
- SS Line 1
- Shallow Manhole Detail
- Copy of Chadsworth Comm. 3rd Add. Plat

San. Sewer
Booked
P-8
6/2/98
R. Loomis

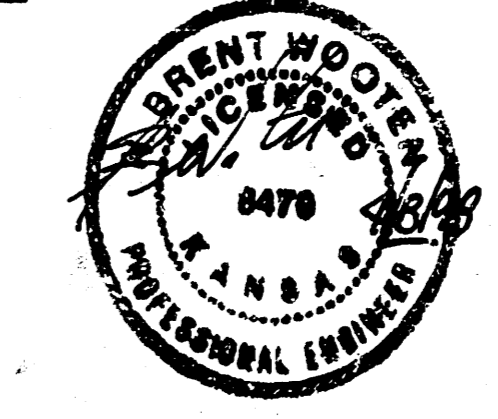
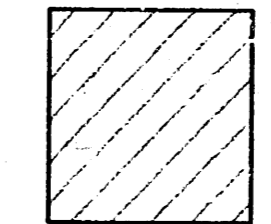
SM SWR
Booked
D-382
7-17-98
MG



Vicinity Map

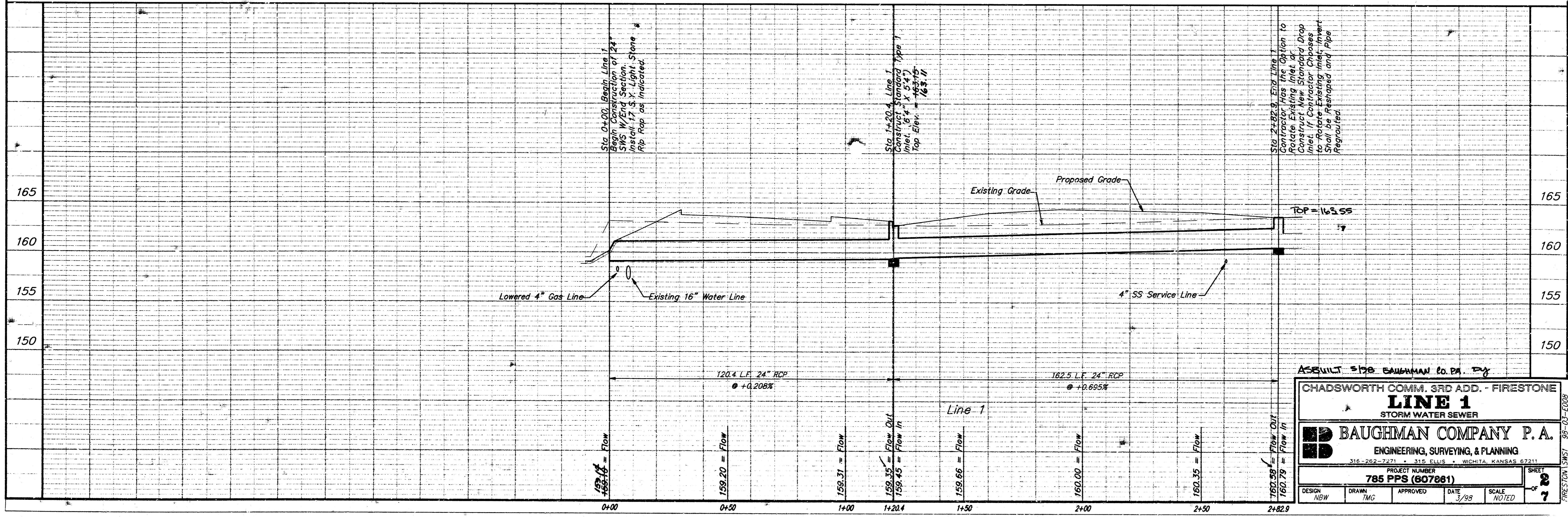
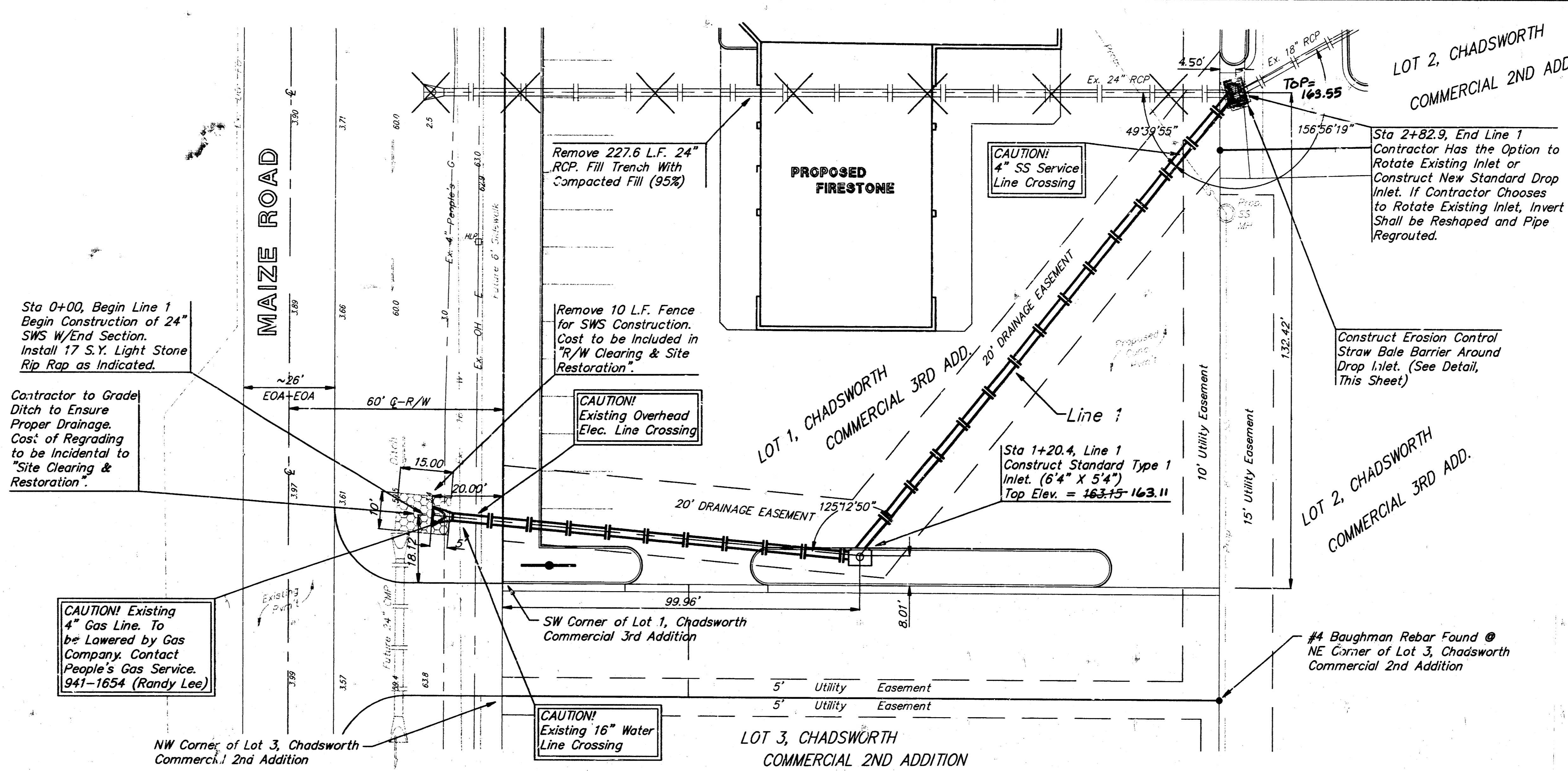
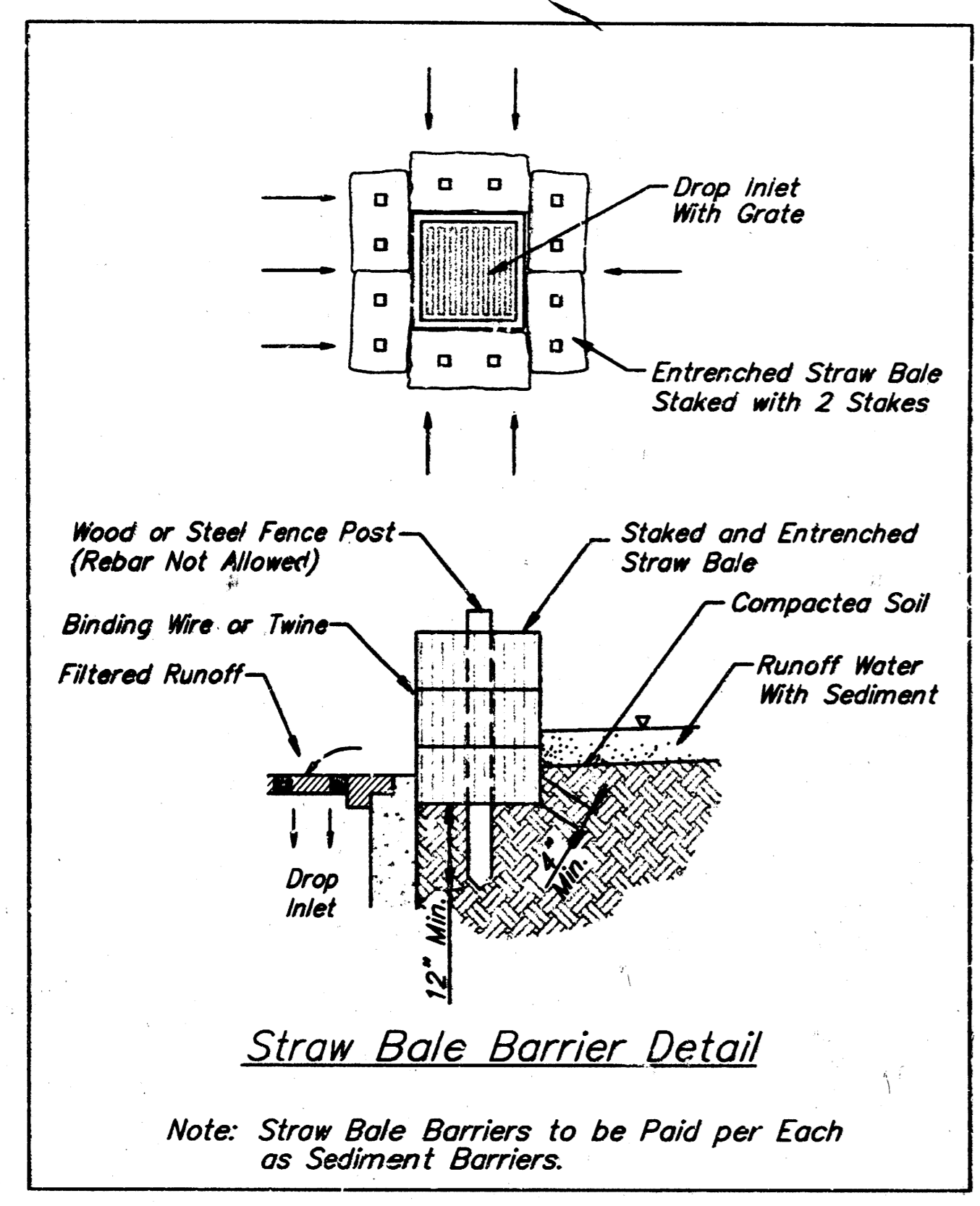
J.M. TRENCHING

Benefit District



PROJECT INSPECTED BY BAUGHMAN COMPANY, P.A.
ASBILT 5198 BAUGHMAN CO. MAY 1998
BAUGHMAN COMPANY P.A.
ENGINEERING, SURVEYING, & PLANNING
316-262-7271 • 315 ELLIS BLVD. WICHITA, KANSAS 67211

BENCHMARK:
 City of Wichita Disk Located
 64' East and 92' South of the
 Intersection of 21st Street North
 and Maize Road.
 Elevation = 164.30 (City Datum)



ASSULT 178 BAUGHMAN CO. PA. BY

CHADSWORTH COMM. 3RD ADD. - FIRESTONE

LINE 1
 STORM WATER SEWER

BAUGHMAN COMPANY P. A.
 ENGINEERING, SURVEYING, & PLANNING

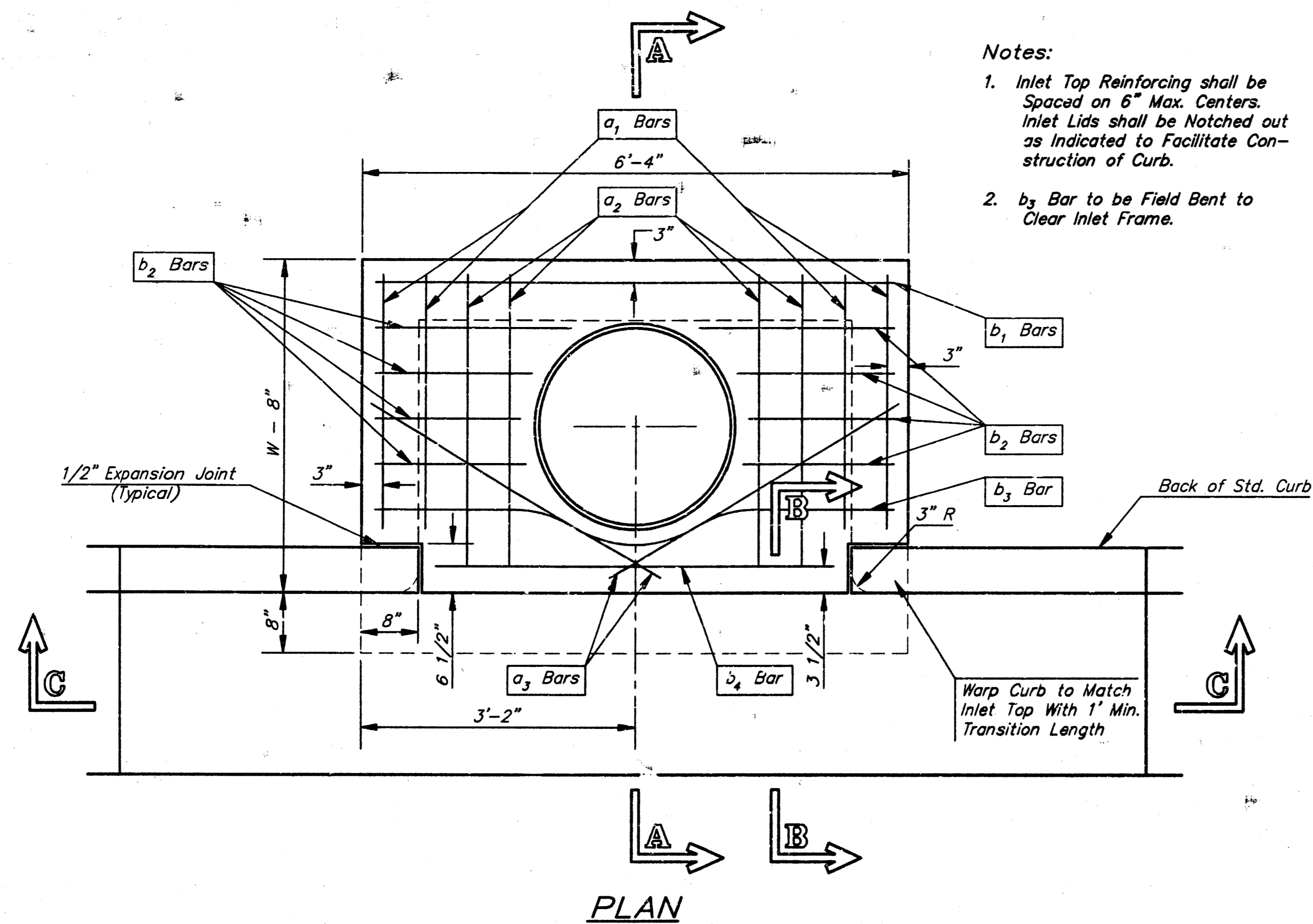
316-262-7271 • 315 ELLIS • WICHITA, KANSAS 67211

PROJECT NUMBER
785 PPS (607881)

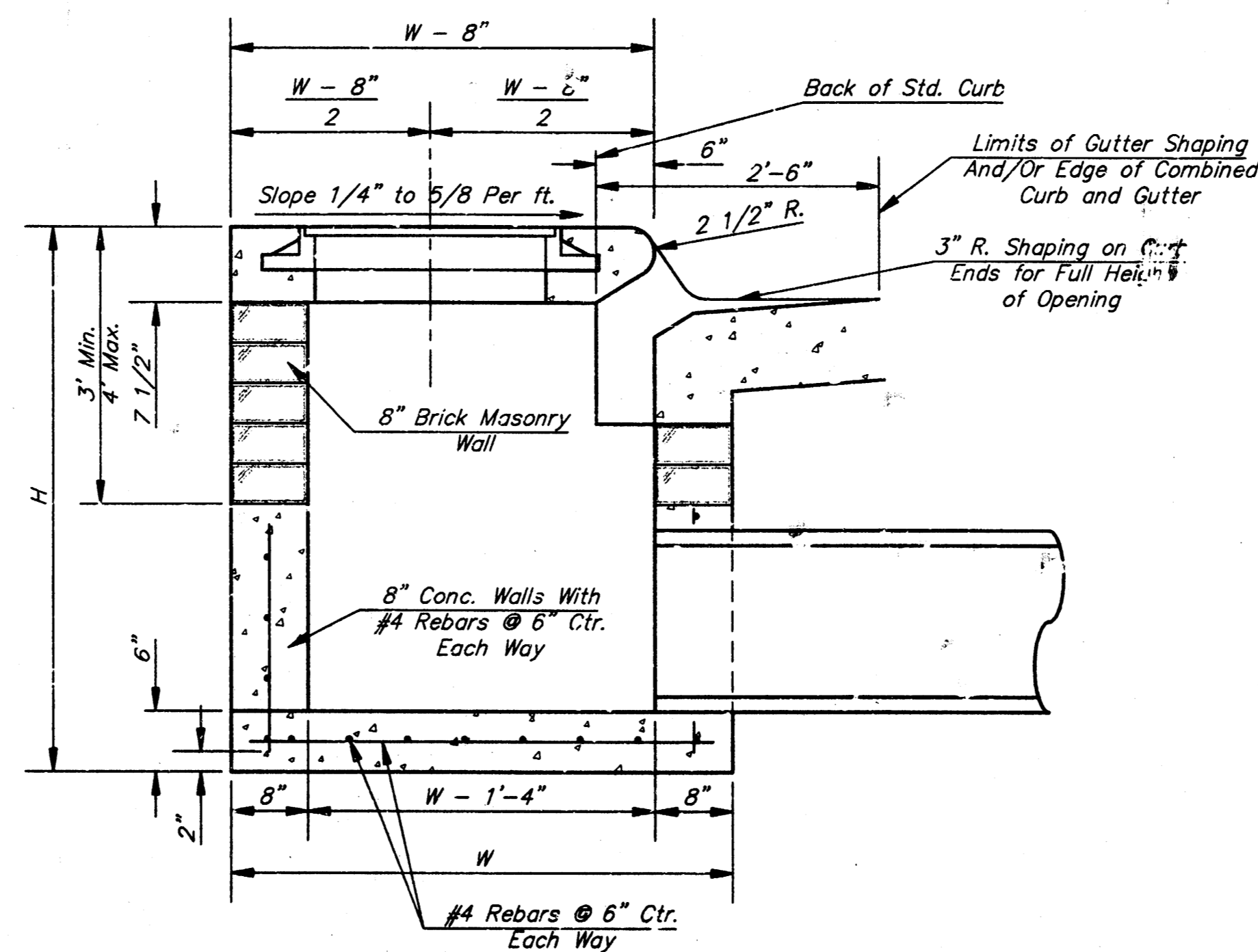
DESIGN: NEW DRAWN: TMG APPROVED: DATE: 3/99 SCALE: NOTED

SHEET 2 OF 7

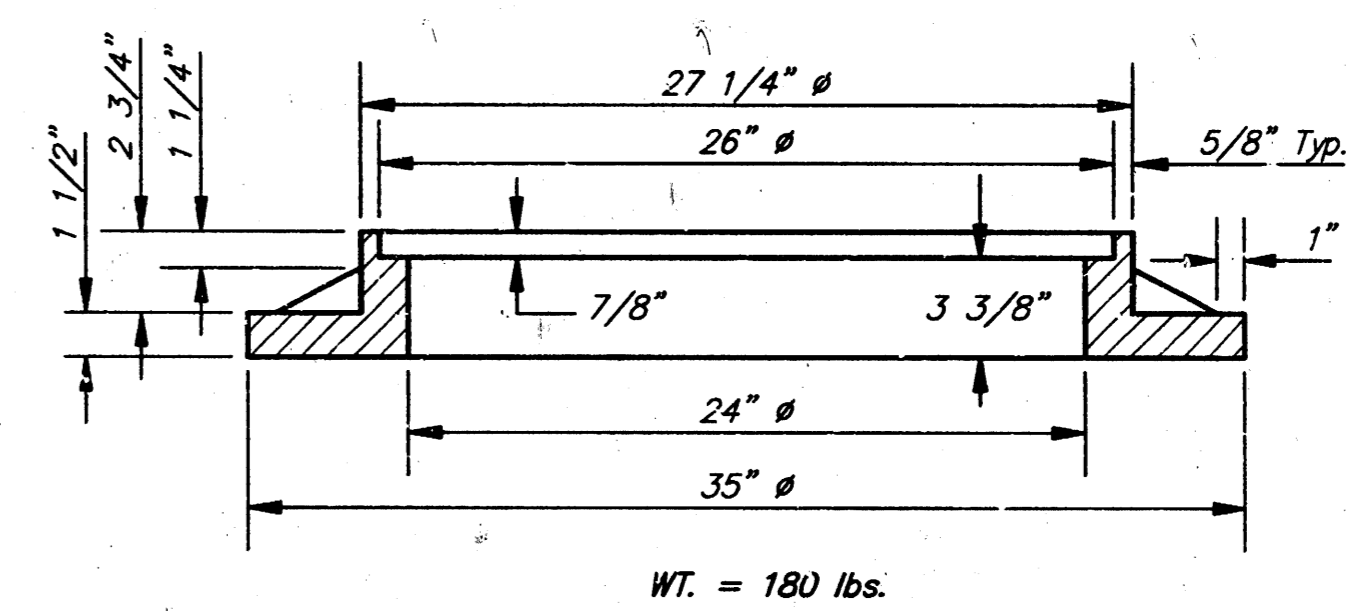
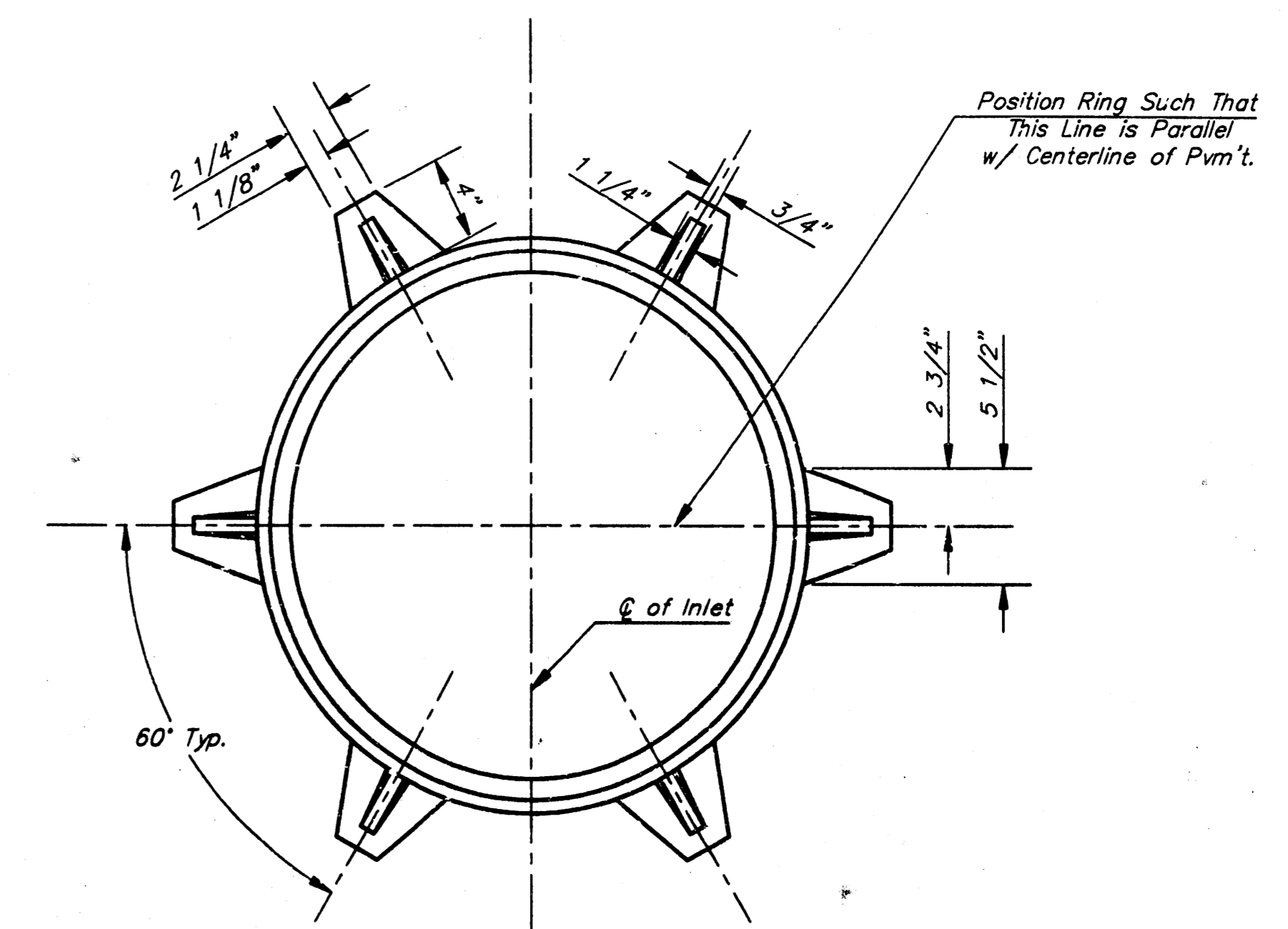
PRESTON SWST 99-03-E008



- Notes:
- Inlet Top Reinforcing shall be Spaced on 6" Max. Centers. Inlet Lids shall be Notched out as Indicated to Facilitate Construction of Curb.
 - b₄ Bar to be Field Bent to Clear Inlet Frame.

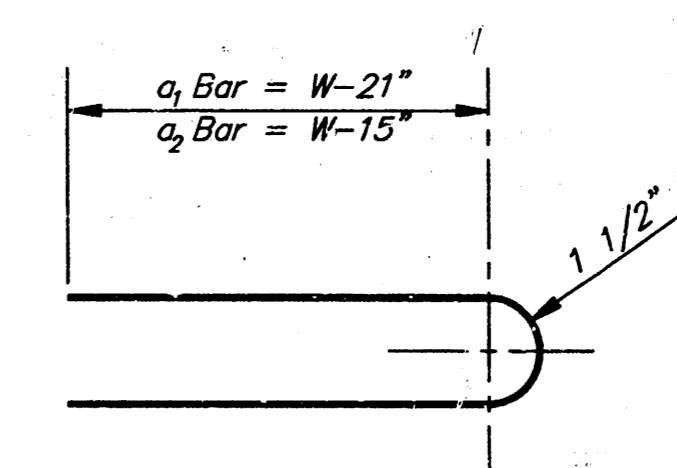


SECTION A-A

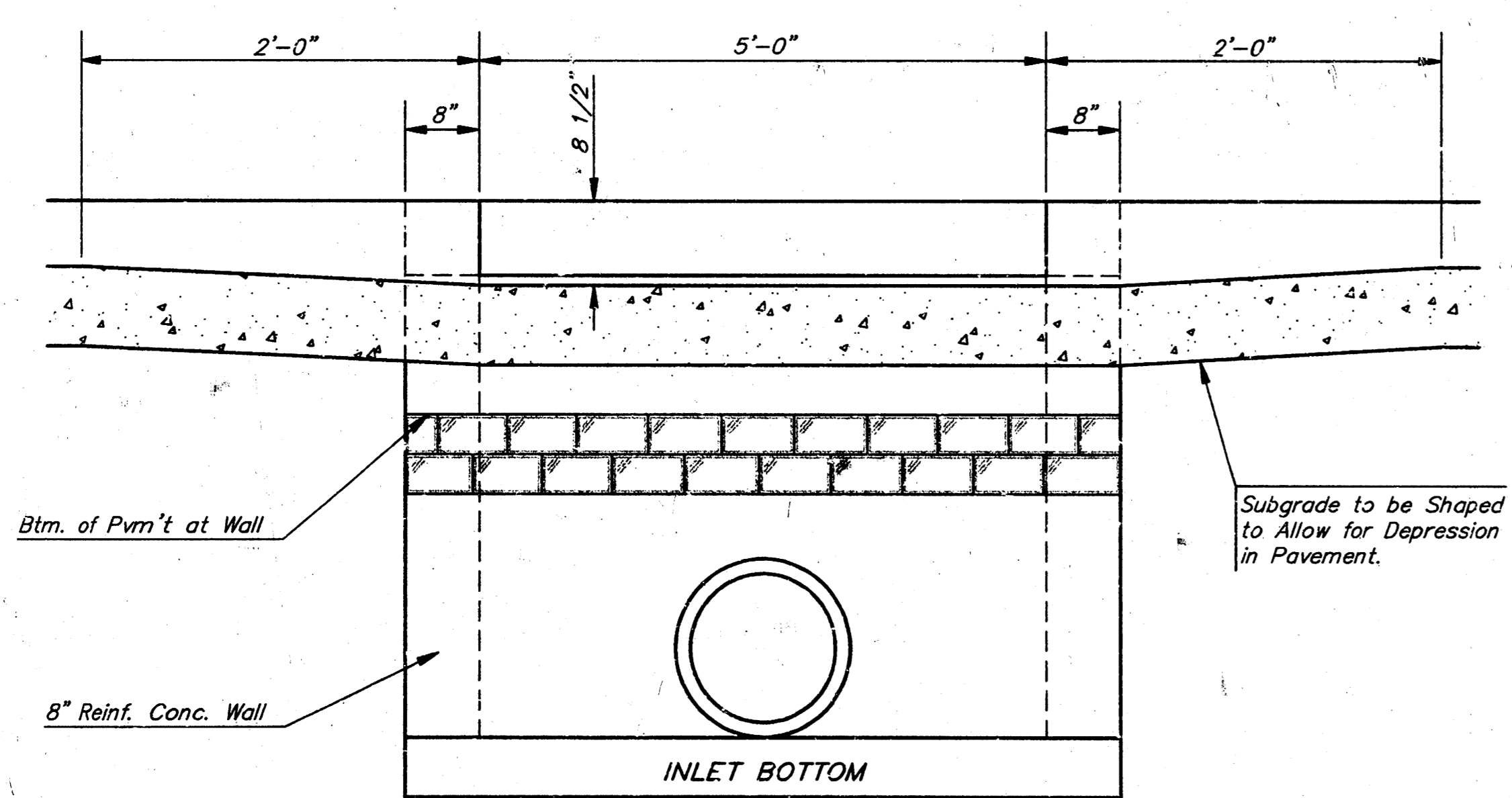


MANHOLE RING AND COVER

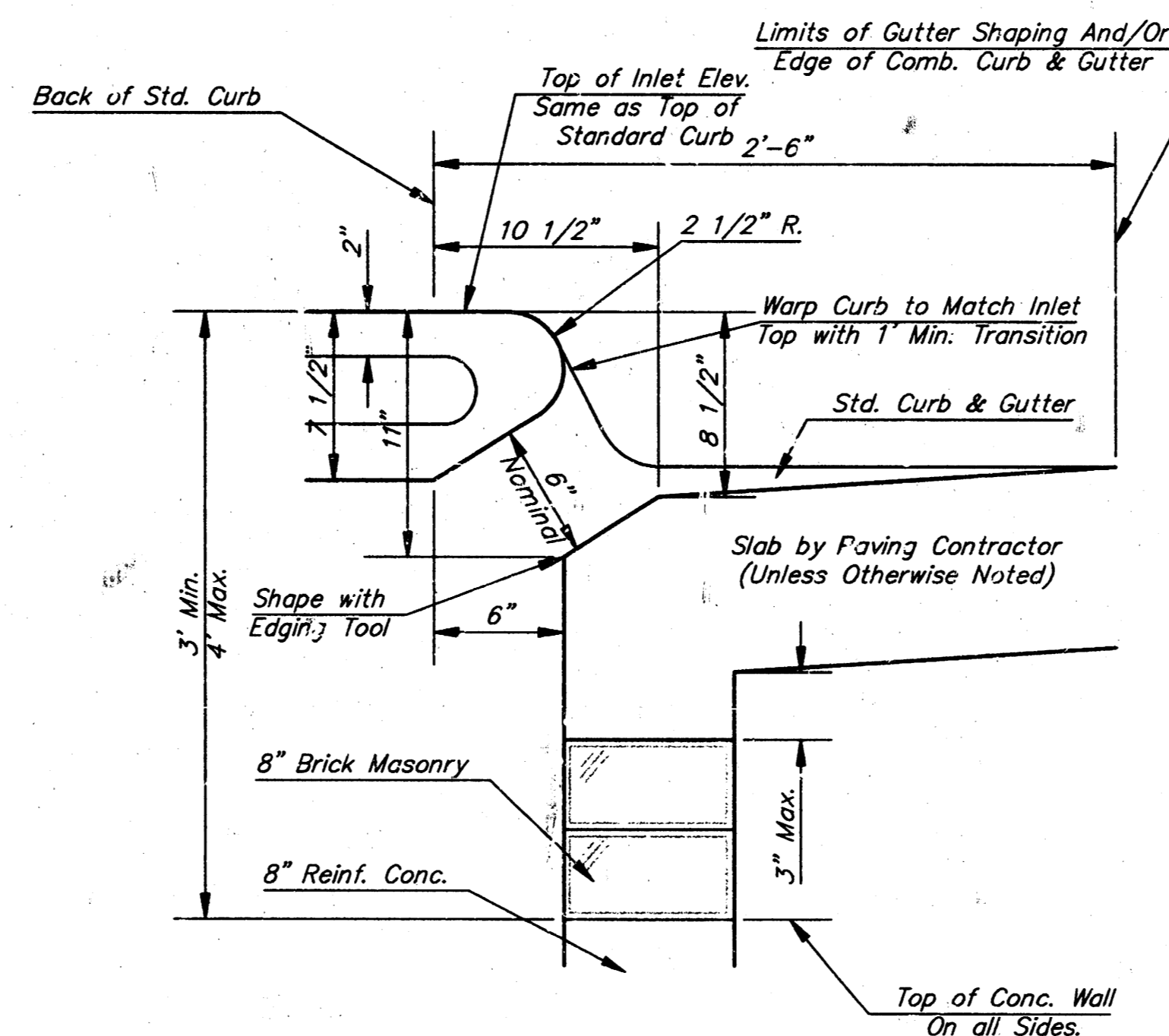
*See City of Wichita Standard Manhole Ring and Cover Detail Sheet for Cover Details to Be Used With Inlet Frame.



BENDING DIAGRAM



SECTION C-C



SECTION B-B

STEEL SCHEDULE

BAR NUMBER	LENGTH											WT. Lbs.
	a ₁	a ₂	a ₃	b ₁				b ₂	b ₃	b ₄		
SIZE	#4	#4	#4	#4	#4	#4	#4	#4	#4	#4	#6	
LENGTH	W=4'-4"	5'-7"	6'-7"	4'-0"	6'-1"	-	-	-	1'-9"	6'-2"	4'-8"	60±
	W=5'-4"	7'-7"	8'-7"	5'-0"	6'-1"	-	-	-	1'-9"	6'-2"	4'-8"	81±
	W=6'-4"	9'-7"	10'-7"	6'-0"	6'-1"	-	-	-	1'-9"	6'-2"	4'-8"	101±
	W=7'-4"	11'-7"	12'-7"	7'-0"	-	-	6'-1"	-	1'-9"	6'-2"	4'-8"	121±
	W=8'-4"	13'-7"	14'-7"	8'-0"	-	-	6'-1"	1'-9"	6'-2"	4'-8"	141±	

Note: a₃ Bars to be Placed Approx. 2" Below Top of Inlet Cover.

STANDARD CURB INLET PRECAST TOPS			
W	PRE-CAST TOP SIZE	PIPE SIZE	CU. YD. CONC.
4'-4"	3'-8" 6'-4" 7 1/2"	21" & SMALLER	0.38±
5'-4"	4'-8" 6'-4" 7 1/2"	24" & 30"	0.51±
6'-4"	5'-8" 6'-4" 7 1/2"	36" & 42"	0.64±
7'-4"	6'-8" 6'-4" 7 1/2"	48" & 54"	0.77±
8'-4"	7'-8" 6'-4" 7 1/2"	60" & 66"	0.90±

GENERAL NOTES

- Concrete tops to be installed on thin mortar cushion to insure full support along brick walls. Concrete tops may be cast in place or precast. Concrete used for inlet construction shall be concrete pavement mix.
- Contractor shall have the option of constructing 8" brick masonry walls between the concrete inlet base and top on this inlet when W=6'-4" and H=7'-0" or less.
- Inlet invert shall be shaped with 8 sack sand mix concrete to create flow channels and to increase hydraulic efficiency such that the inlet will be self cleaning between all inlet and/or outlet pipes.
- The ends of all pipes installed in inlets shall be cut off flush with the inside face of the inlet wall.

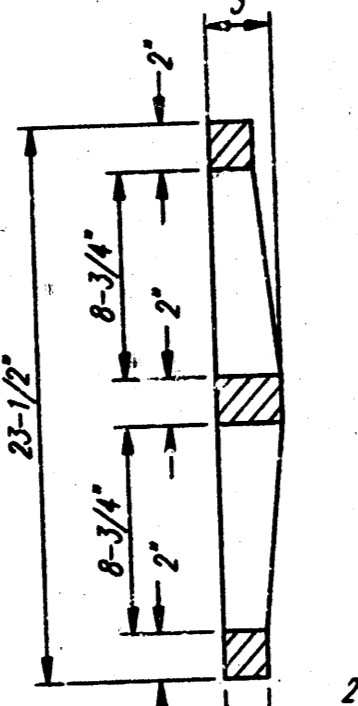
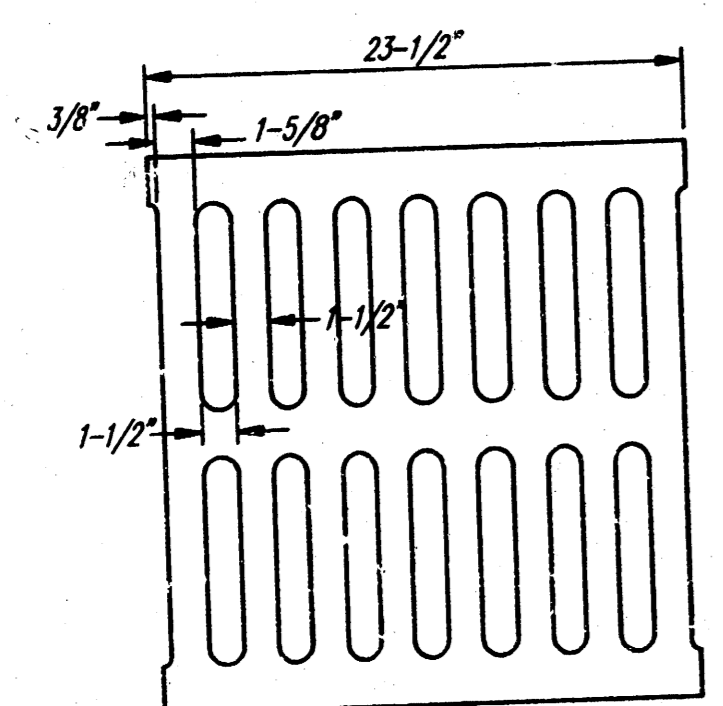
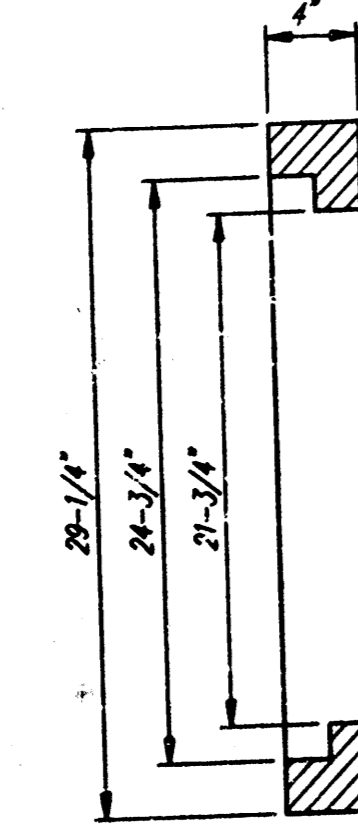
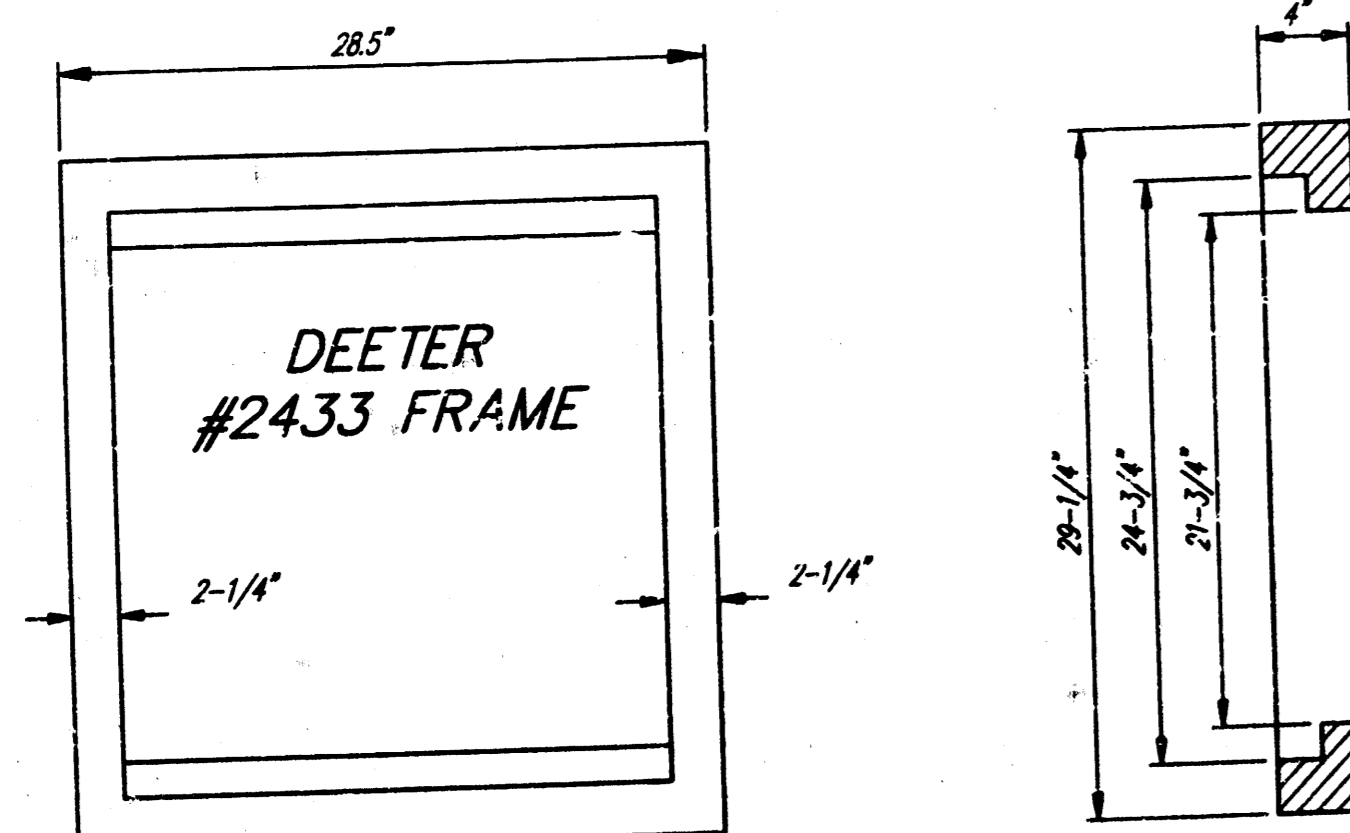
Revised - Dec. 21, 1981

CITY OF WICHITA, KANSAS
TYPE 1 CURB INLET
 INLET OPENING = 6"X5'-0"

BAUGHMAN COMPANY P. A.
 ENGINEERING, SURVEYING, & PLANNING
 316-262-2221 • 315 ELLIOTT • WICHITA, KANSAS 67211

PROJECT NUMBER
785 PFS (607861)

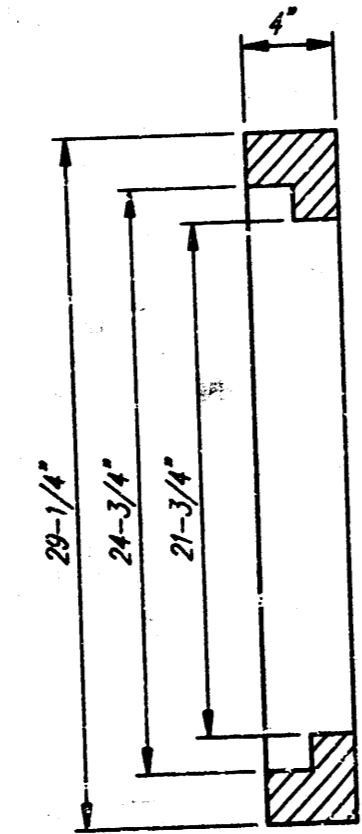
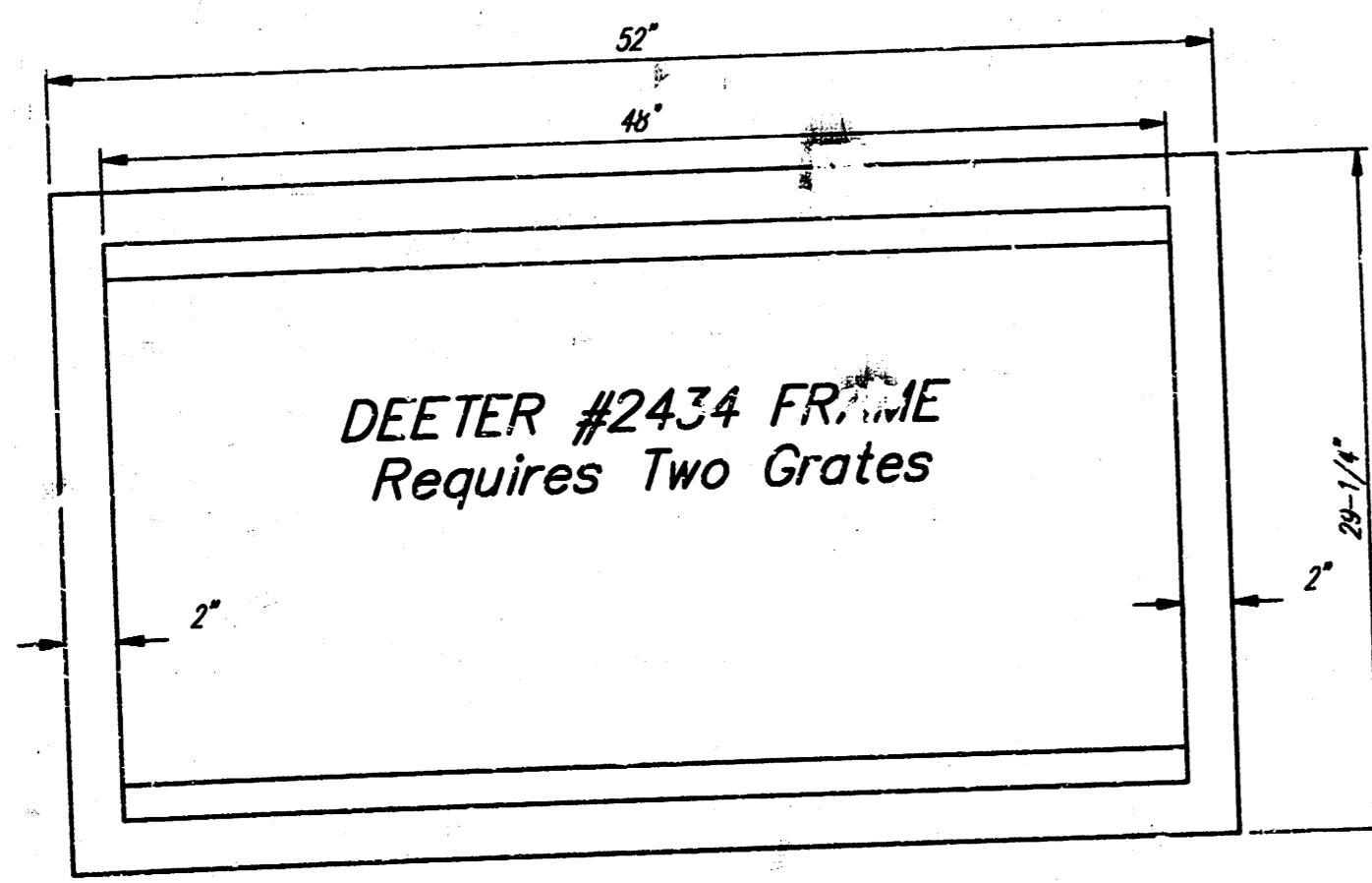
DESIGN C.O.W. DRAWN STAFF APPROVED DATE 3-98 SCALE NONE SHEET 8 OF 7



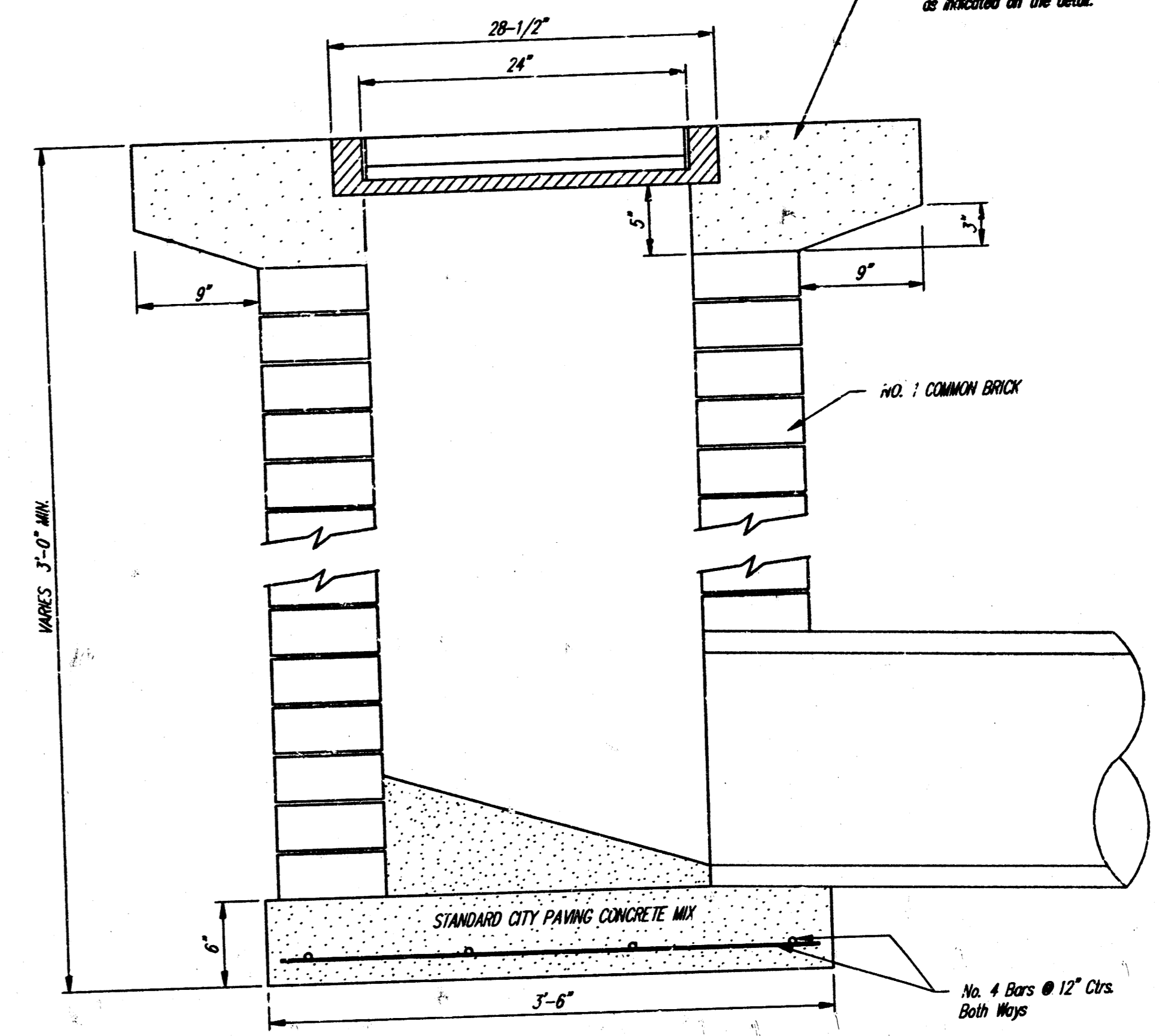
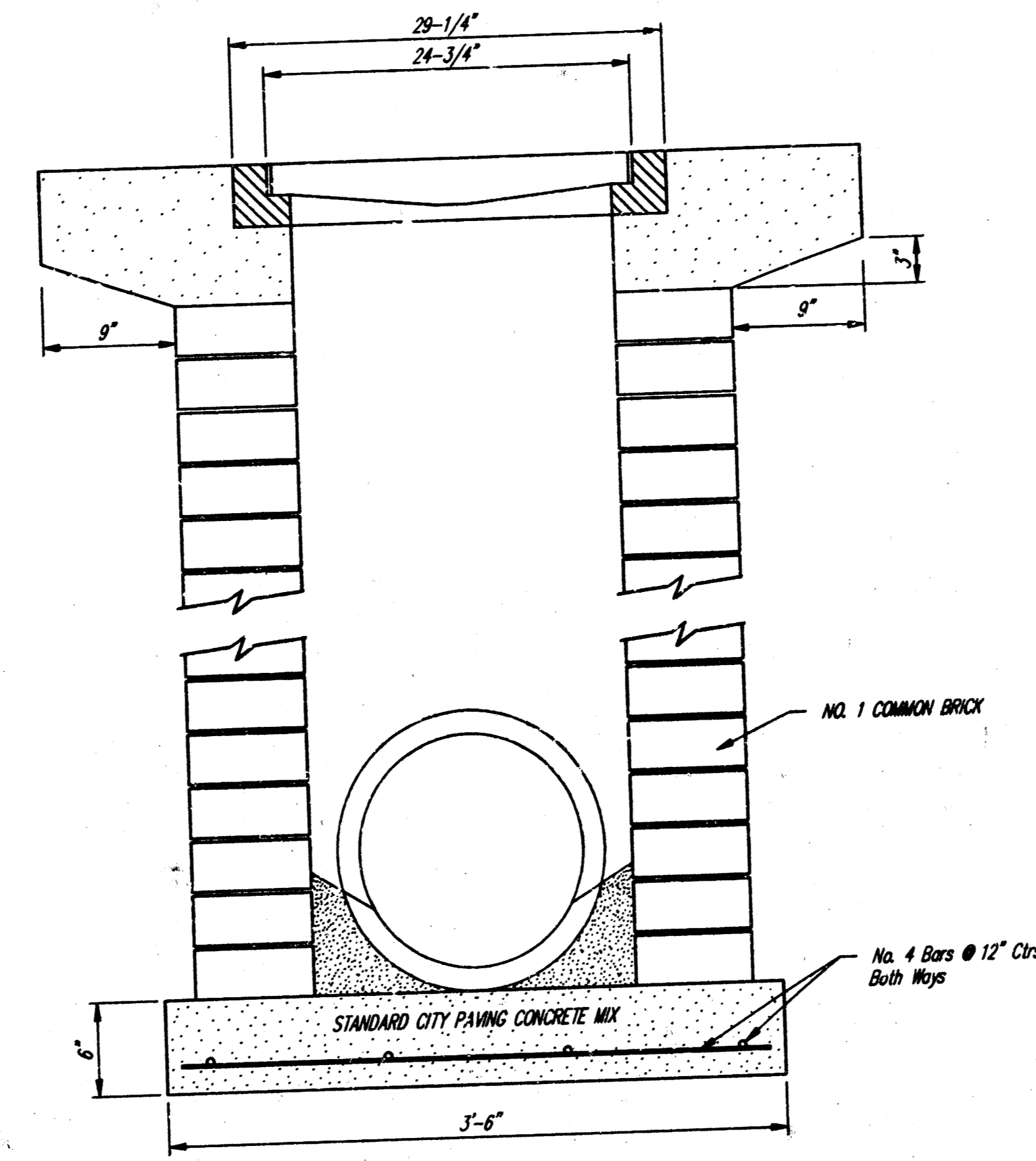
DEETER #2433 GRATE

24" x 24" Frame and Grate Detail

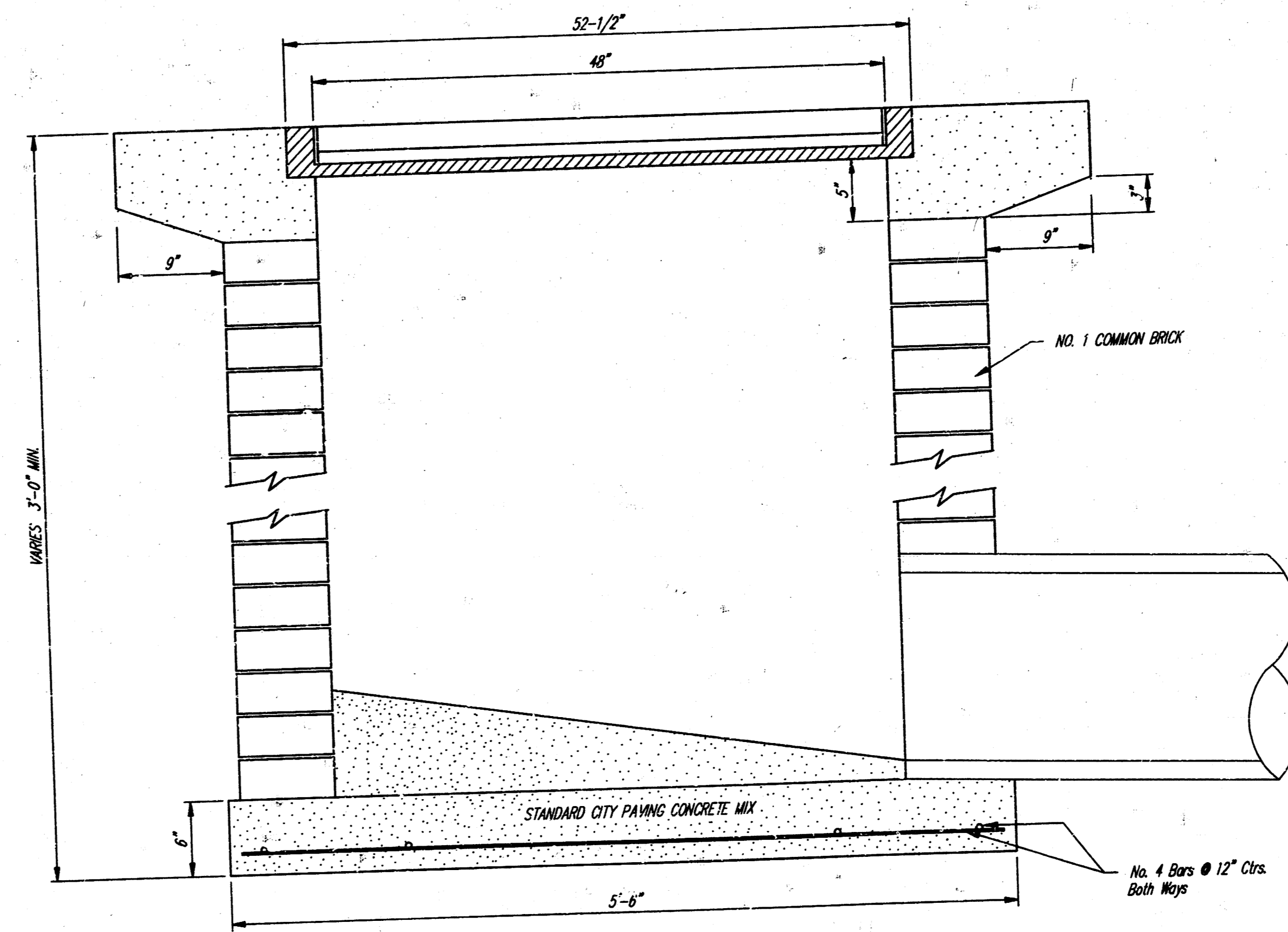
NOTE: Grates shall be imprinted on the top surface with "CITY OF WICHITA" using letters at least 1" in height. Other marking methods may be approved by the engineer.



Double 24" x 24" Frame Detail



Note: Concrete apron shall be constructed around the inlet when inlet is located in an unimproved area. Where the inlet is adjacent to pavement, the pavement thickness shall be tapered to the inlet in 9 inches as indicated on the detail.



City of Wichita Standard
Drop Inlet
BAUGHMAN COMPANY P. A.
 ENGINEERING, SURVEYING, & PLANNING
 316-262-7271 • 316 ELLIS • WICHITA, KANSAS 67211
 PROJECT NUMBER
735 PPS (607881)
 SHEET
4
 OF
7
 DESIGN: C.O.W. DRAWN: Staff APPROVED: DATE: 3-98 SCALE: NONE

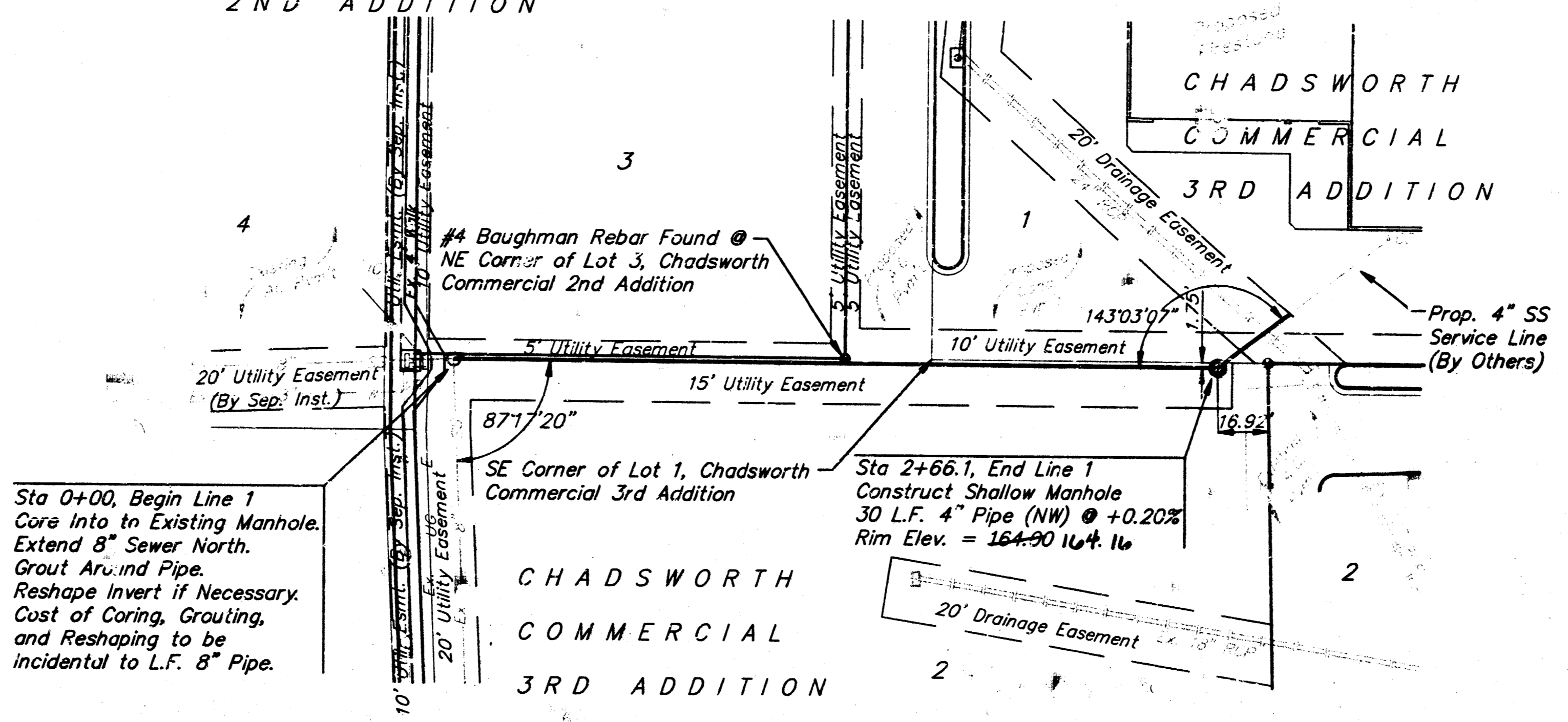
TITESTON (A00)P12 98-02-E008

BENCHMARK:

City of Wichita Disk Located
64' East and 99' South of the
Intersection of 21st Street North
and Maize Road.
Elevation = 164.30 (City Datum)

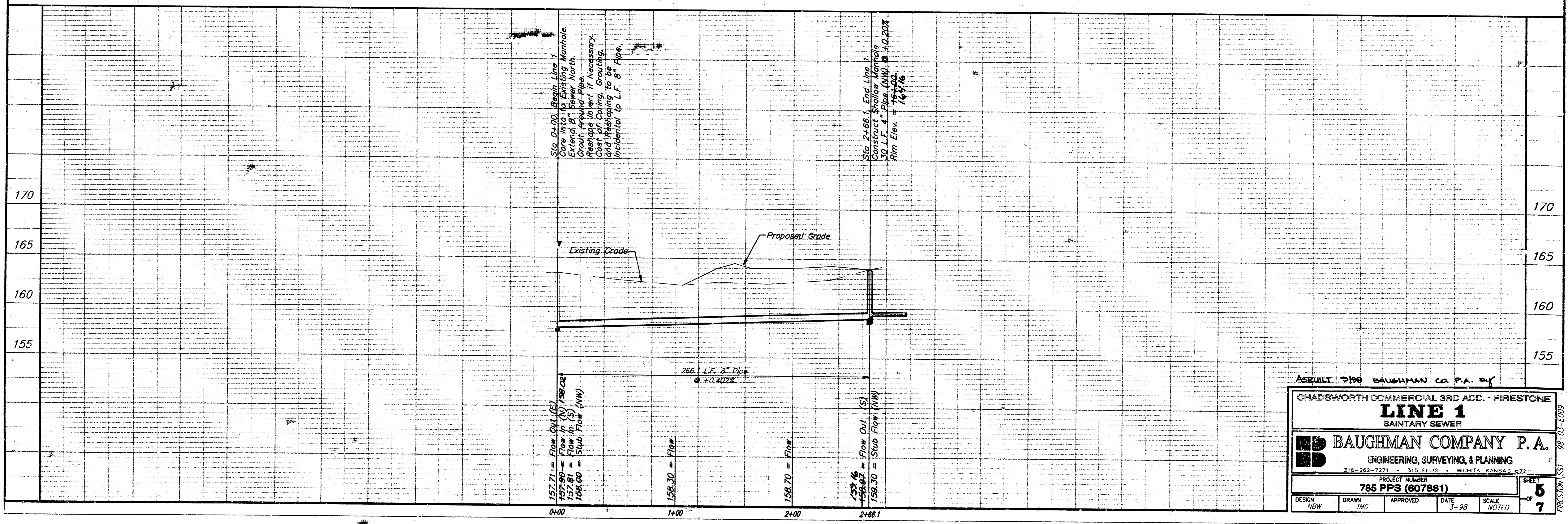
Scale: 1" = 40' Horizontal
1" = 5' Vertical
● = Iron

CHADSWORTH COMMERCIAL
2ND ADDITION



Sta 0+00, Begin Line 1
Core Into to Existing Manhole.
Extend 8" Sewer North.
Grout Around Pipe.
Reshape Invert if Necessary.
Cost of Coring, Grouting,
and Reshaping to be
incidental to L.F. 8" Pipe.

Sta 2+66.1, End Line 1
Construct Shallow Manhole
30 L.F. 4" Pipe (NW) @ +0.20%
Rim Elev. = 164.90 (164.16)



Sta 0+00, Begin Line 1
Core Into to Existing Manhole.
Extend 8" Sewer North.
Grout Around Pipe.
Reshape Invert if Necessary.
Cost of Coring, Grouting,
and Reshaping to be
incidental to L.F. 8" Pipe.

Sta 2+66.1, End Line 1
Construct Shallow Manhole
30 L.F. 4" Pipe (NW) @ +0.20%
Rim Elev. = 164.90
164.16

ASBUILT 3/98 BAUGHMAN CO. P.A. BY

CHADSWORTH COMMERCIAL 3RD ADD. - FIRESTONE

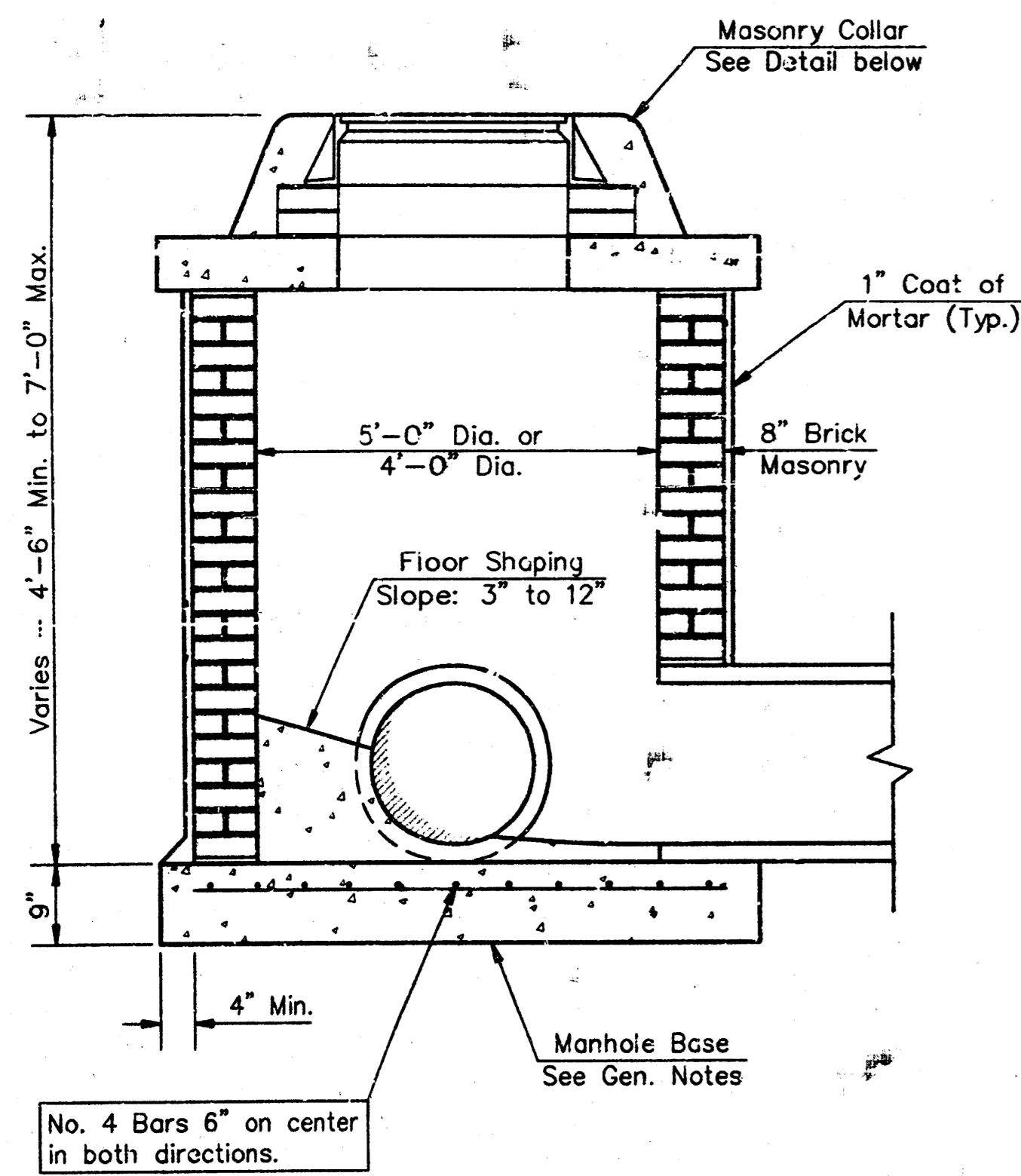
LINE 1
SAINTARY SEWER

BAUGHMAN COMPANY P.A.
ENGINEERING, SURVEYING, & PLANNING
316-262-7271 • 315 ELLIOT • WICHITA, KANSAS 67211

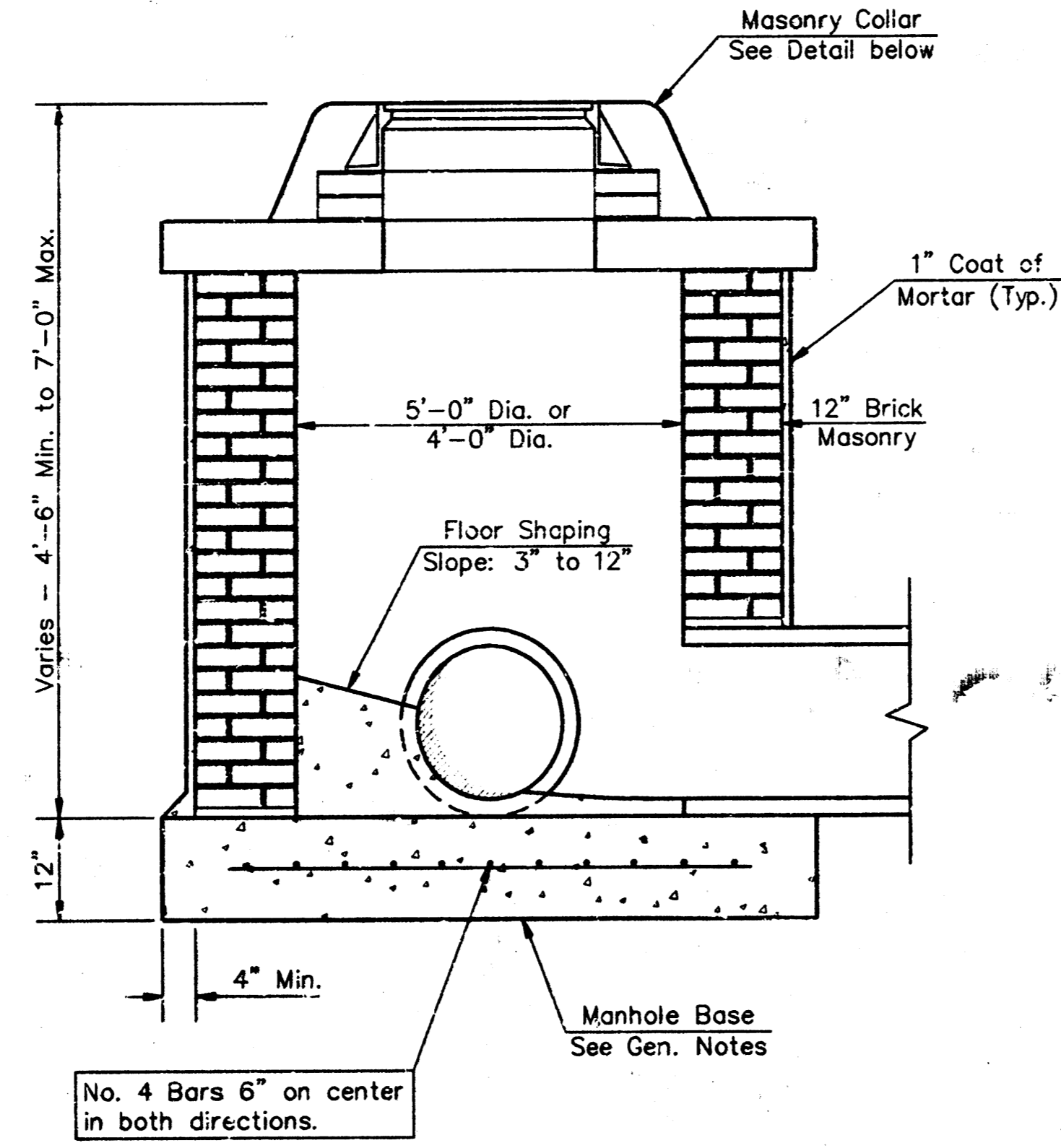
PROJECT NUMBER
785 PPS (607881)

DESIGN NEW	DRAWN TMG	APPROVED	DATE 3-98	SCALE NOTED	SHEET 5 OF 7
---------------	--------------	----------	--------------	----------------	-----------------------

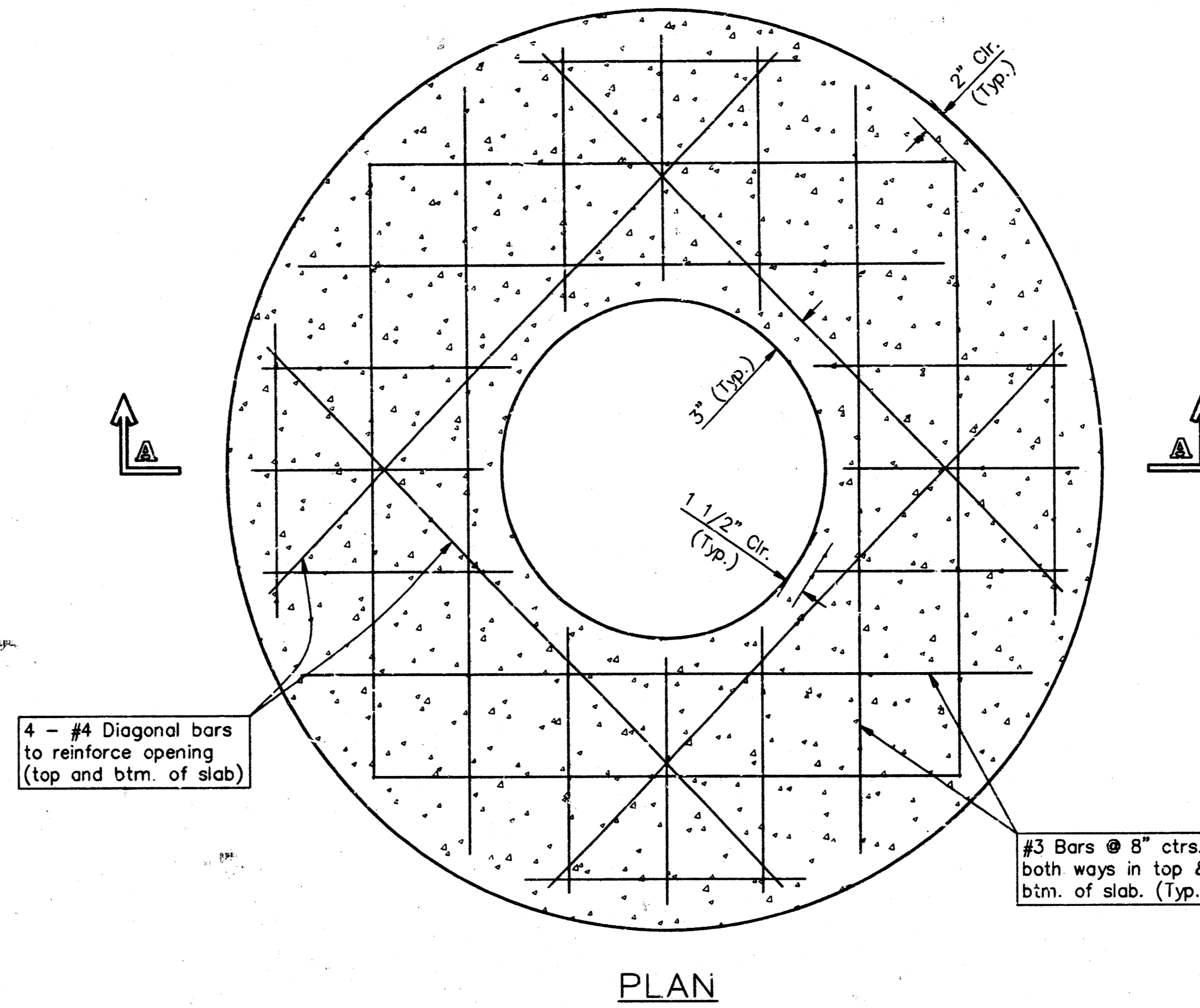
FIRESTONE (CS) 98-03-E009



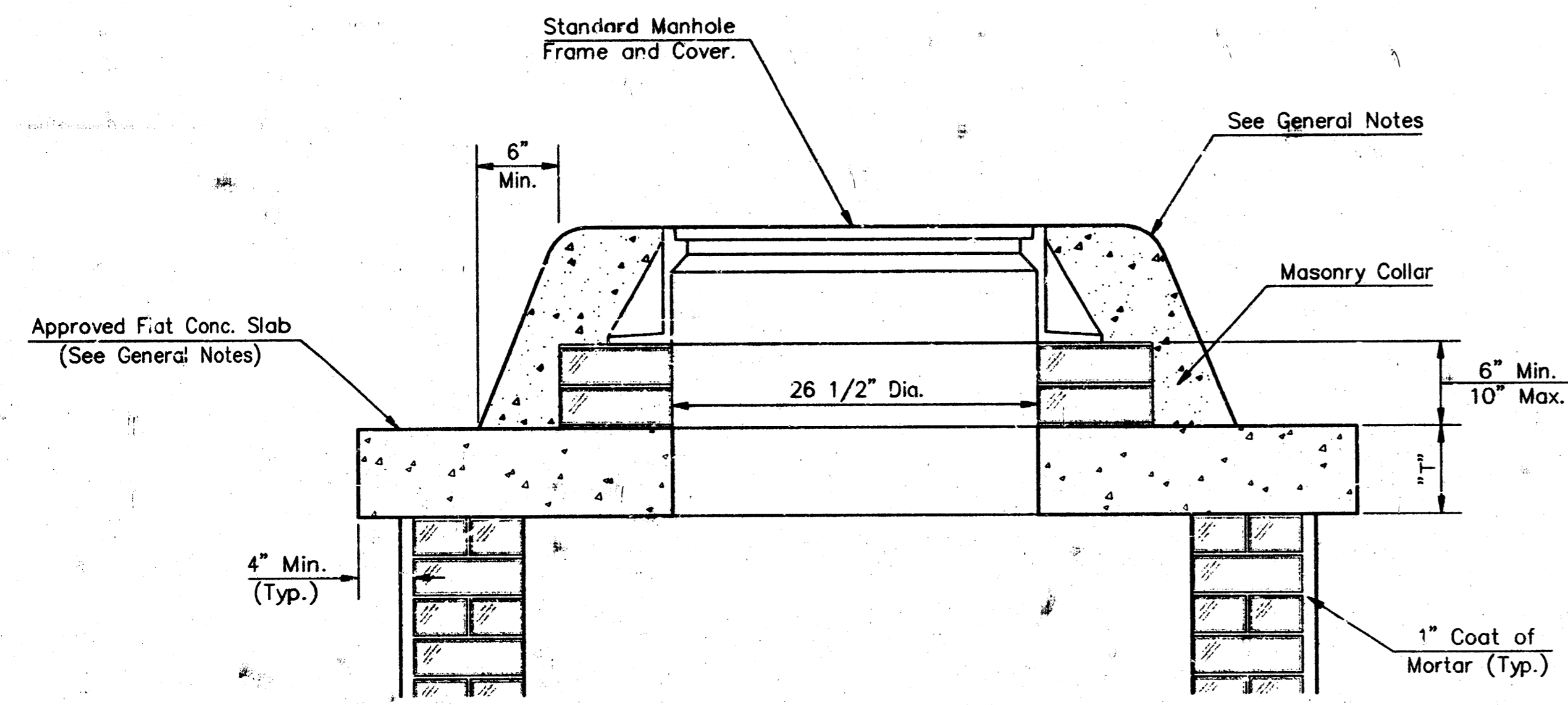
SHALLOW TYPE "A" MANHOLE



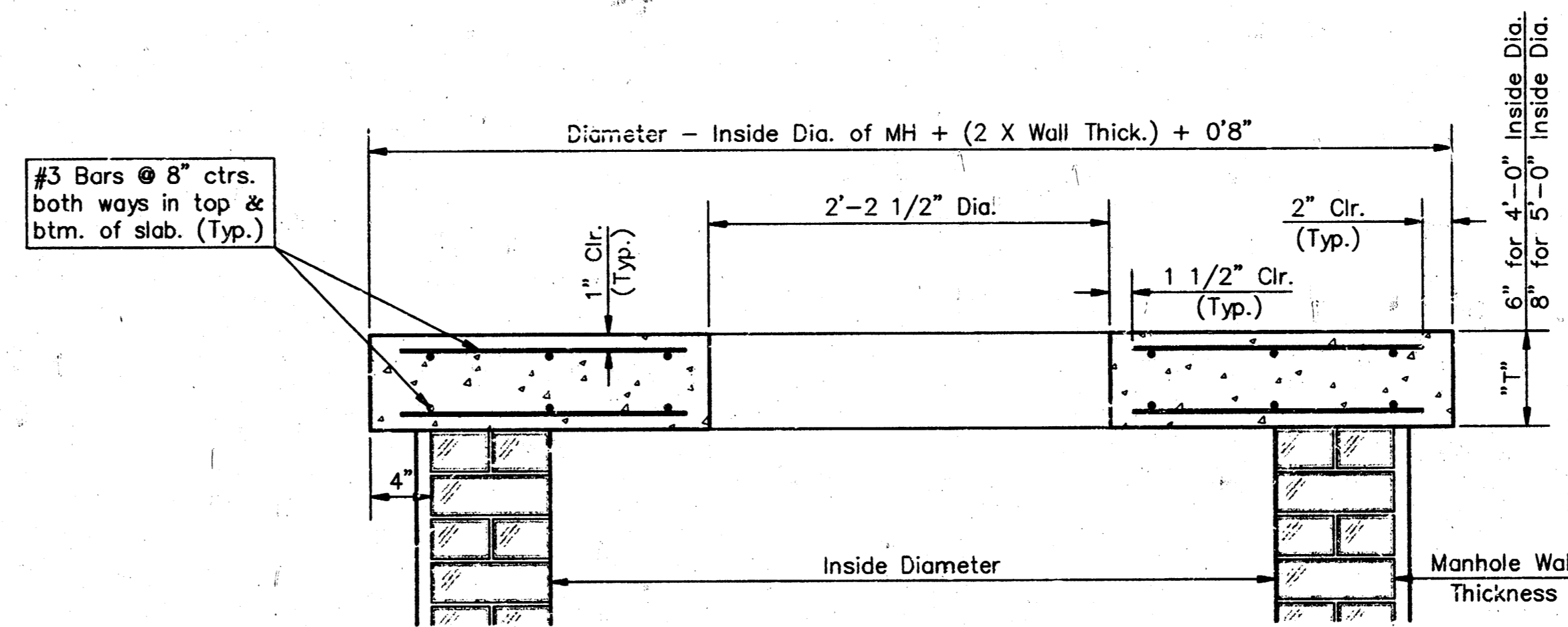
SHALLOW TYPE "B" MANHOLE



PLAN

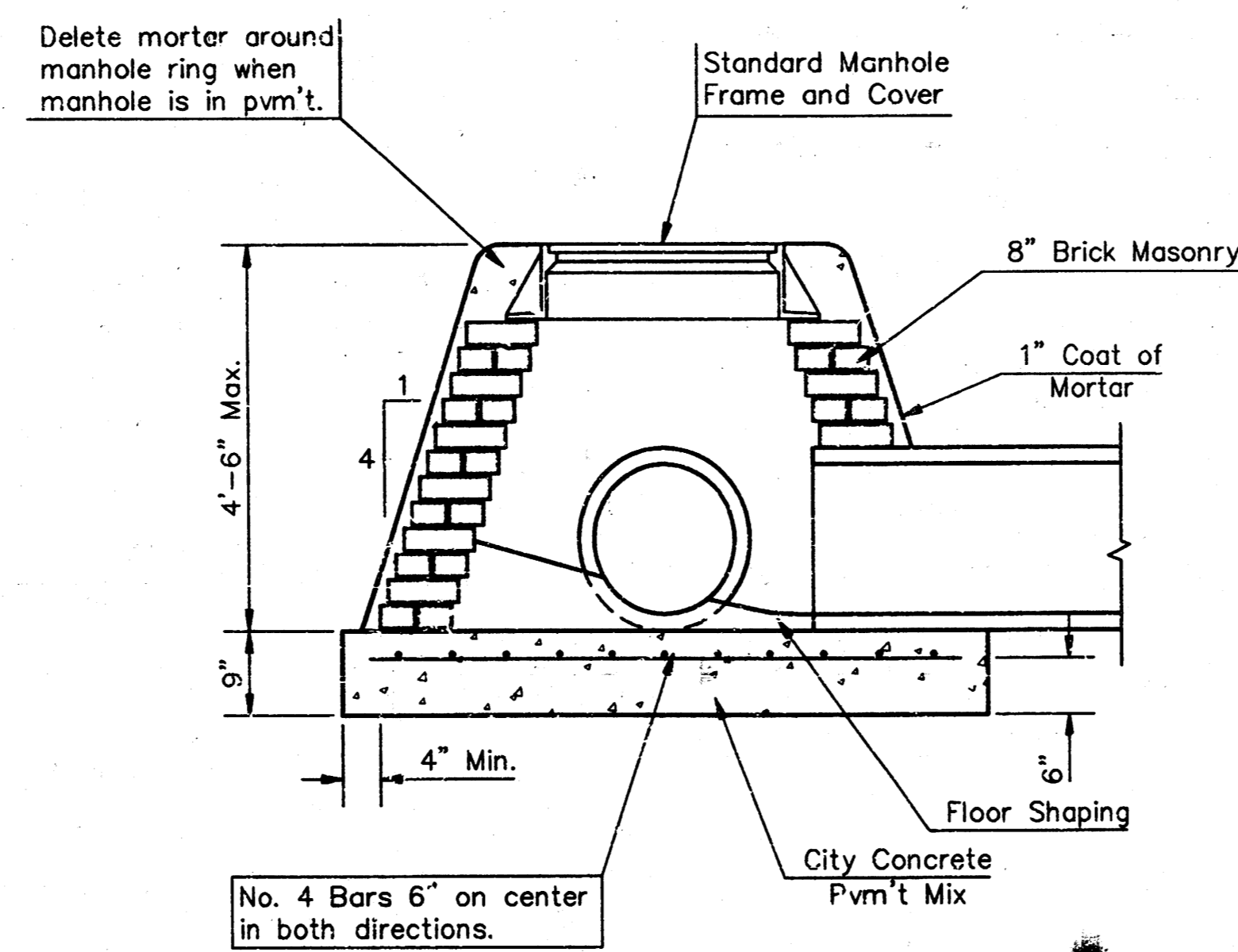


MASONRY COLLAR DETAIL

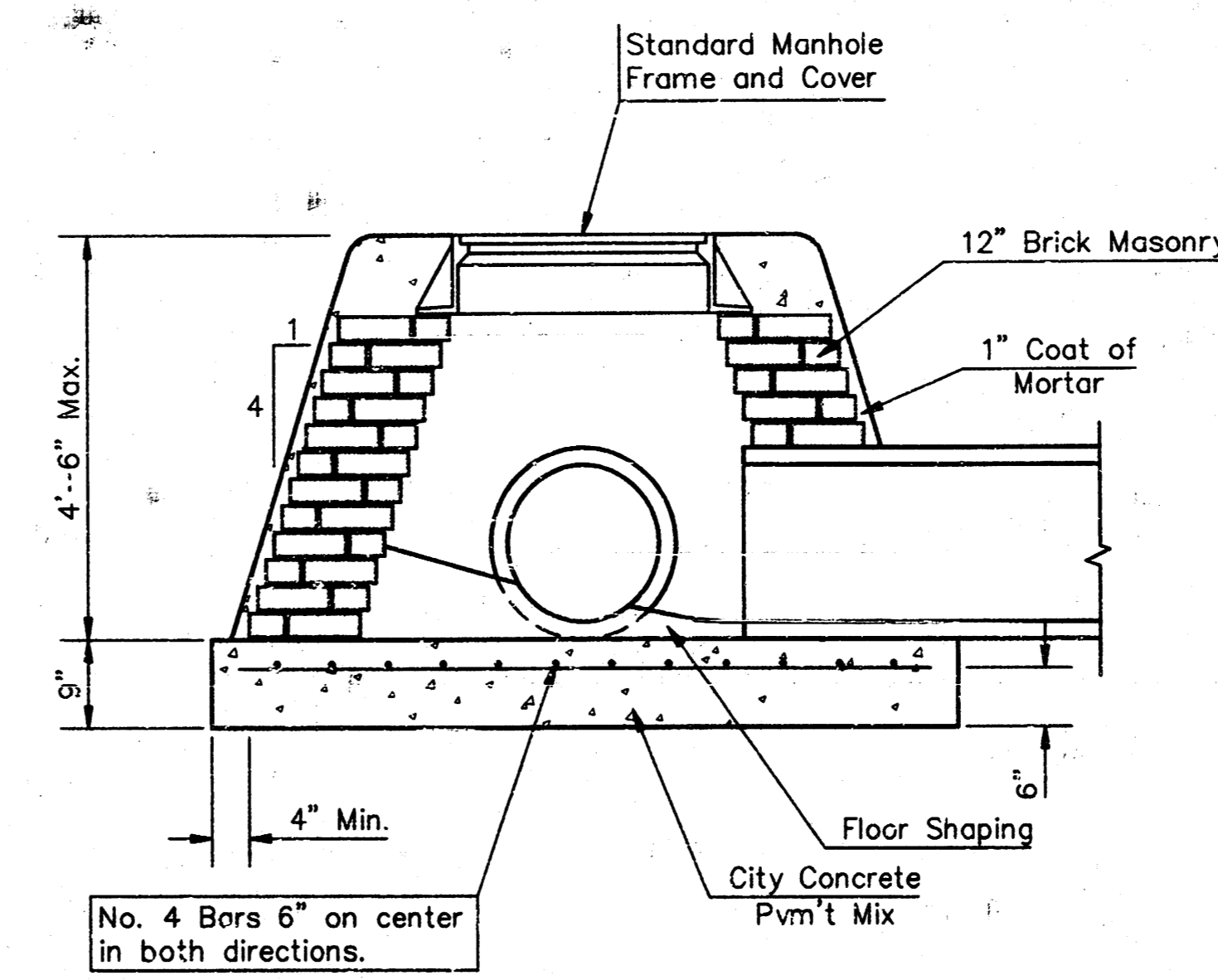


SECTION A-A

FLAT CONCRETE SLAB DETAILS



SPECIAL SHALLOW TYPE "A" MANHOLE



SPECIAL SHALLOW TYPE "B" MANHOLE

GENERAL NOTES

- Mortar used in masonry construction shall contain 8 sacks of cement per cubic yard. Concrete used in manhole bases shall conform to the requirements of concrete for concrete pavement construction as specified in the city standard paving specifications using city concrete cement mix without air entraining admixture. Mortar shall be placed around the manhole ring as shown on the drawings when manholes are constructed in unpaved areas. Type "A" shallow manholes can be used on sewers when the manhole is not located within public street pavement. Manholes constructed where pipe sizes are smaller than 24" shall have an inside diameter of 4". Manholes constructed where pipe sizes are 24" or larger shall have an inside diameter of 5". Completed manhole shall be without leaks and water tight.
- Reinforcing steel shall be installed in the manhole bases and shall consist of no. 4 bars placed on 6" centers in both directions. The manhole base reinforcement shall be placed 6" above the bottom of the manhole base. All costs for furnishing and installing reinforcing steel shall be included in the unit price bid for the manhole.
- The floors of all manholes shall be shaped with flow channels such that the manholes will be self cleaning and free of areas where solids could be deposited as sewage flows through the manhole from all inlet pipes to the outlet pipe. Flow channels shall be formed to match the bottom halves of the inflowing pipes and the outflowing pipe as shown by the drawings. Manhole floors shall have slopes of 3 inches per foot in the areas outside of the flow channels sloped toward the flow channels. Pipes laid through manholes shall have the top half removed to neat lines for the full inside diameter of the manhole. Manhole floors shall then be shaped around the bottom half of the pipe which forms the flow channel.
- Pipes installed within the excavation made for the manhole shall be cradled with concrete to the limits of the manhole excavation. When clay pipe is used, the cradle shall extend to the first joint outside the manhole. The cradle shall be terminated at the clay pipe joint in a manner which will maintain the flexibility of the joint. Cost of cradle within manhole excavation or to clay pipe joints adjacent to manhole shall be included in the unit price bid for the manhole.
- Manhole cover castings and manhole frame castings shall conform to the requirements as indicated in the standard specifications and as shown in the standard detail drawings.
- The crowns of inflowing pipes shall never be set lower than the crown of the outflowing pipe.
- Standard shallow manholes type "A" and "B" shall be paid for at the unit price bid per each for the type and diameter indicated. Standard special shallow manholes type "A" and "B" shall be paid for at the unit price bid per each for the type indicated. All standard shallow manhole diameters will be 4' unless indicated otherwise.
- All brick used in manhole construction shall meet Grade SW of ASTM C652 or C62-87.

CITY OF WICHITA, KANSAS
Std. Manhole Detail
 TYPE "A" AND TYPE "B"

BAUGHMAN COMPANY P. A.
 ENGINEERING, SURVEYING, & PLANNING
 316-262-7271 • 315 ELLIS • WICHITA, KANSAS 67211

PROJECT NUMBER
785 PPS (607861)

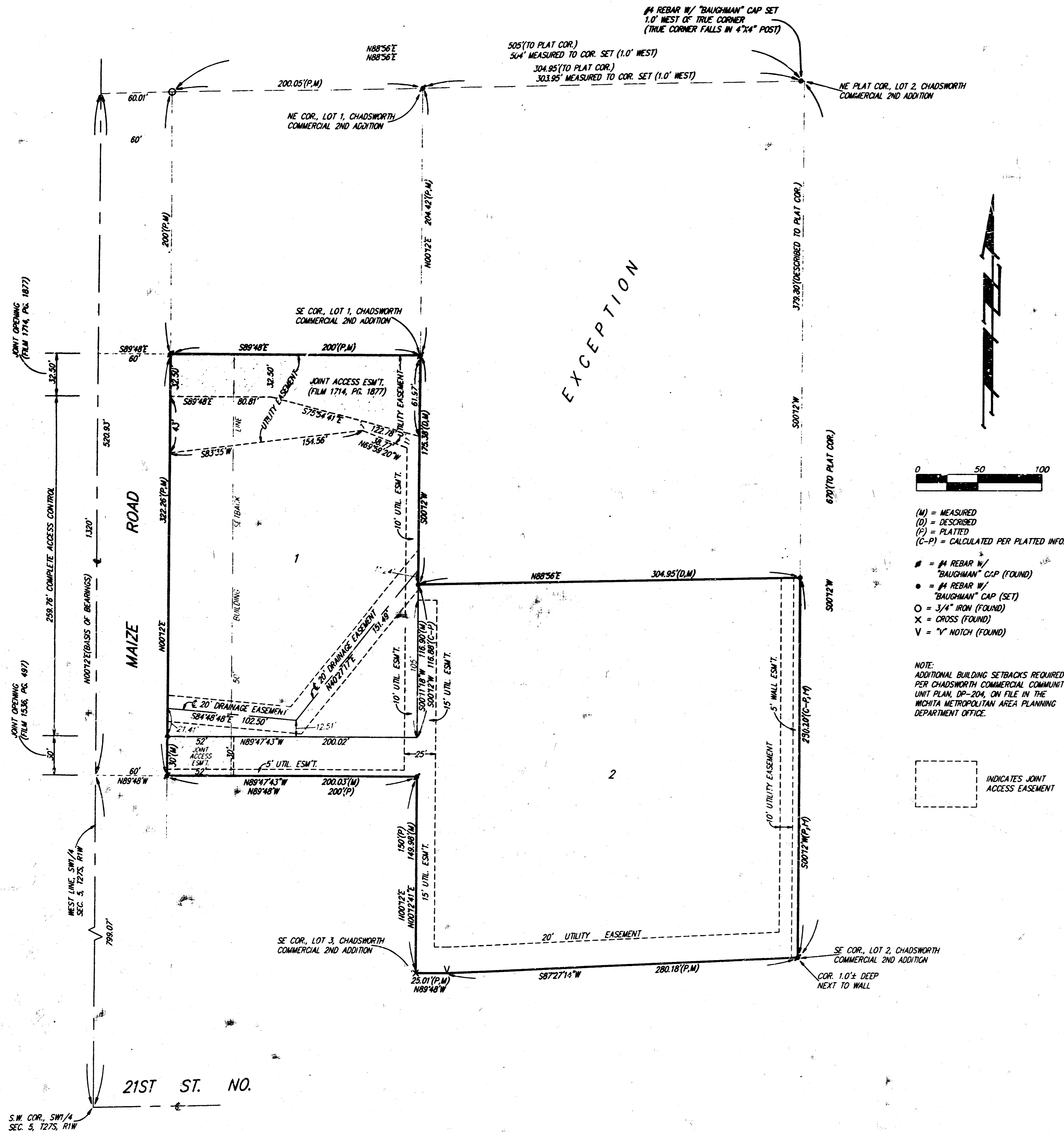
DESIGN: C.O.W. DRAWN: Staff APPROVED: DATE: 3-98 SCALE: NONE

SHEET
6
 OF
7

FIRESTON SHLMMH08-03-ED09

CHADSWORTH COMMERCIAL 3RD ADDITION

WICHITA, SEDGWICK COUNTY, KANSAS



State of Kansas) SS We, Baughman Company, P.A., Surveyors in
Sedgwick County) aforesaid county and state do hereby certify that we have surveyed
and platted "CHADSWORTH COMMERCIAL 3RD ADDITION", Wichita, Sedgwick
County, Kansas, and that the accompanying plat is a true and correct
exhibit of the property surveyed, described as and being a replat of
Lot 2, Chadsworth Commercial 2nd Addition, Wichita, Sedgwick County,
Kansas, EXCEPT that part of said Lot 2 described as follows: Beginning
at the SE Corner of Lot 1 in said Chadsworth Commercial 2nd Addition;
thence N00°12'E along the east line of said Lot 1, 204.42 feet to
the NE Corner of said Lot 1; thence N88°56'E along the north line of
said Lot 2, 304.95 feet to the NE Corner of said Lot 2; thence S00°12'W
along the east line of said Lot 2, 379.80 feet; thence S88°56'W parallel
with the north line of said Lot 2, 304.95 feet to an intersection with
the east line of said Lot 1 as extended south; thence N00°12'E along
said extended east line, 175.38 feet to the point of beginning.

All being situated in the SW 1/4 of Sec. 5, Twp. 27-S, R-1-W
of the 6th P.M., Sedgwick County, Kansas.

Existing public easements and dedications being vacated by
virtue of K.S.A. 12-512(h).

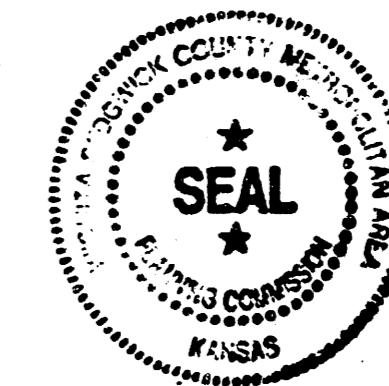
Baughman Company, P.A.

Michael G. Conrey
Surveyor

This plat of "CHADSWORTH COMMERCIAL 3RD
ADDITION", Wichita, Sedgwick County, Kansas has been submitted to
and approved by the Wichita-Sedgwick County Metropolitan Area
Planning Commission, Wichita, Kansas.
Dated this 25 day of September, 1998.

Wichita-Sedgwick County Metropolitan Area Planning Commission.

John C. Frye
Chairman



Marvin S. Krout
Secretary

This plat approved and all dedications shown
hereon accepted by the City Council of the City of Wichita, Kansas,
this day of 1998.

Bob Knight
Mayor

Pat Burnett
City Clerk

Know all men by these presents that we,
the undersigned, have caused the land described in the surveyors
certificate to be platted into Lots to be known as "CHADSWORTH
COMMERCIAL 3RD ADDITION", Wichita, Sedgwick County, Kansas. The
utility easements are hereby granted as indicated for the construction
and maintenance of all public utilities. The wall easement is hereby
granted as indicated for the construction and maintenance of a private
screening wall and utility main lines and service lines are allowed to
cross this easement. The drainage easements are hereby granted as
indicated for drainage purposes. Access controls as depicted
on the face of the plat are hereby granted to the City of Wichita,
Kansas. The permitted entrance locations shall be as determined
by the City Engineer of the City of Wichita, Kansas.

Mesa Homes, Inc.

Larry E. Bottenberg
Vice-President

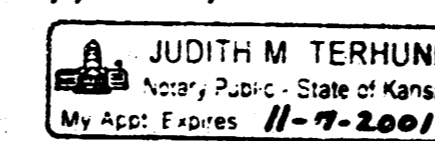
Entered on transfer record this day
of 1998.

State of Kansas) SS The foregoing instrument acknowledged be-
fore me, this 26 day of FEBRUARY, 1998, by
Larry E. Bottenberg, Vice-President of Mesa Homes, Inc., on behalf of
the corporation.

James Alford
County Clerk

Judith M. Terhune
Notary Public

My App't. Exp. 11-7-2001



We the undersigned, holders of a mortgage
on the above described property, do hereby consent to this plat of
"CHADSWORTH COMMERCIAL 3RD ADDITION", Wichita, Sedgwick County,
Kansas.

Garden Plain State Bank

Kyle B. Estep
Senior Vice-President

State of Kansas) SS This is to certify that this plat has been
filed for record in the office of the Register of Deeds, this day
of 1998, at o'clock M.; and is duly
recorded.

Larry Consolver
Register of Deeds

State of Kansas) SS The foregoing instrument acknowledged be-
fore me, this 26 day of FEB, 1998, by Kyle B. Estep, Senior
Vice-President of Garden Plain State Bank, on behalf of the bank.

Michael D. Hurtt
Deputy

My App't. Exp. 1-6-2000

