

LATERAL 6, MAIN 20, WAR INDUSTRIES SEWER

# SANITARY SEWER IMPROVEMENTS

FOR

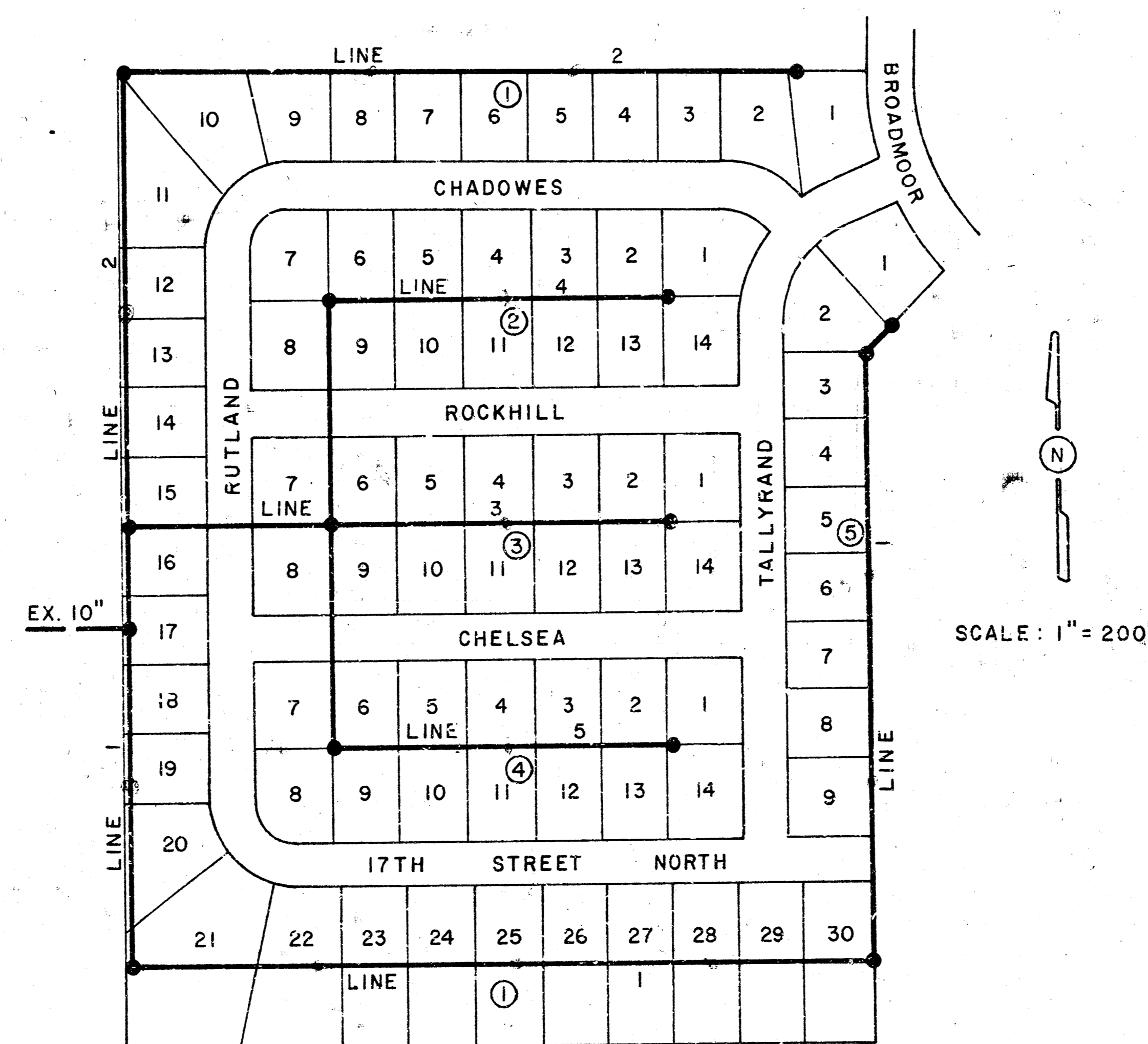
## CHELSEA ESTATES

WICHITA, KANSAS

1977

CITY PROJECT NO. DBKL 577060

R. W. LINN - CITY ENGINEER



LOCATION MAP

INDEX TO DRAWINGS

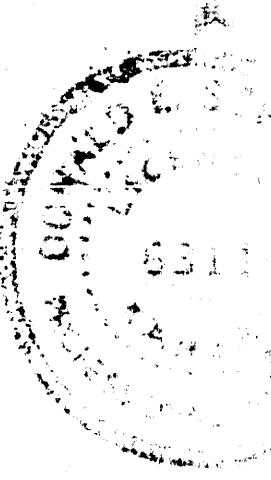
SH. NO.	
1	TITLE SHEET
2	LINE 1 - PLAN PROFILE
3	LINE 2 - PLAN PROFILE
3	LINE 3 - PLAN PROFILE
4	LINE 4 - PLAN PROFILE
4	LINE 5 - PLAN PROFILE
5-6	MANHOLE DETAILS

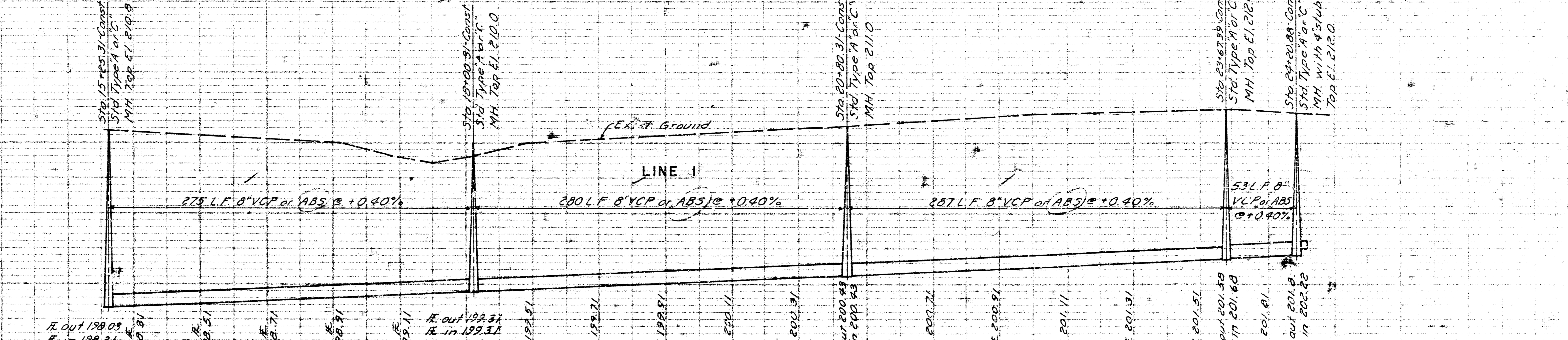
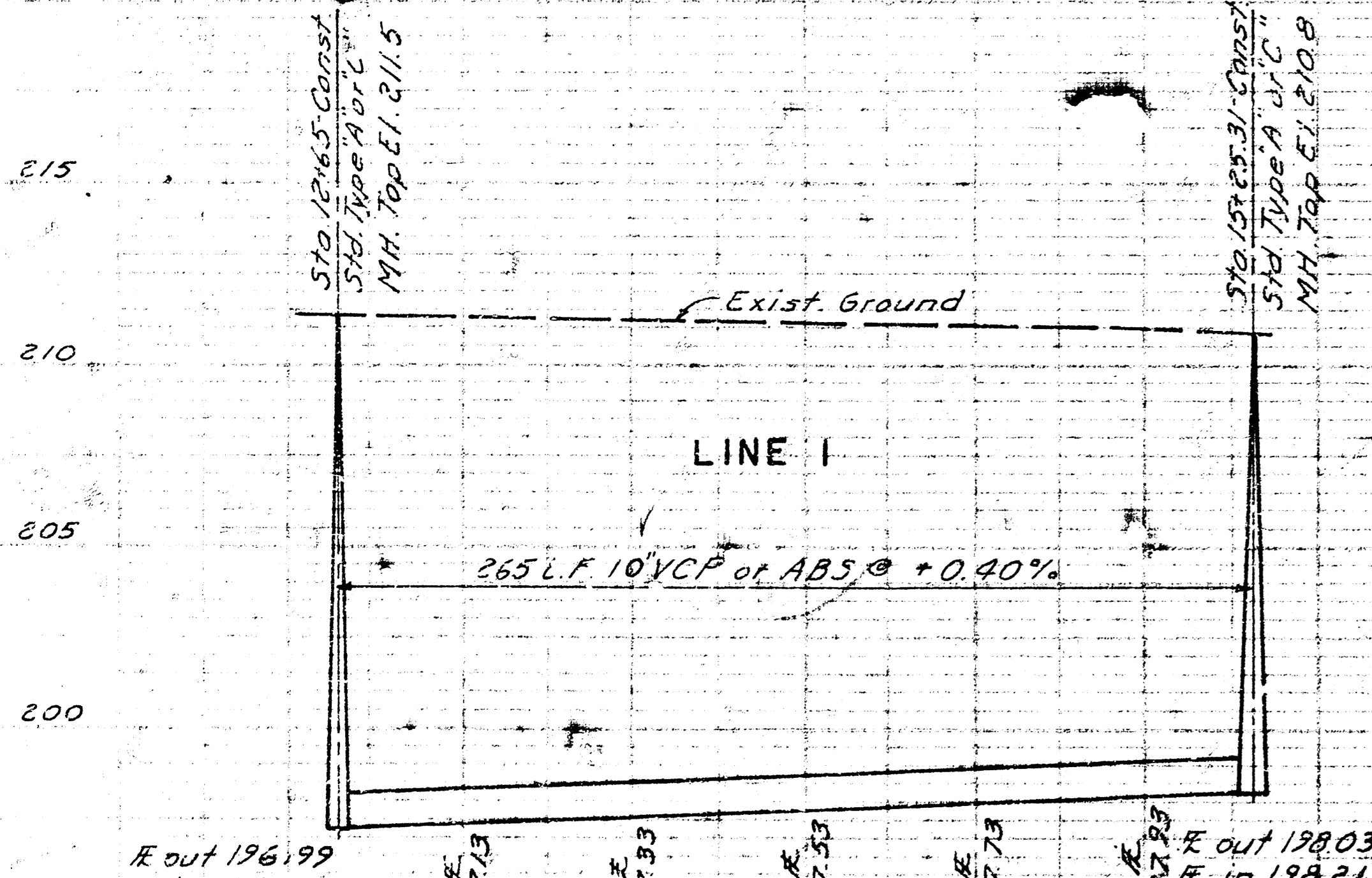
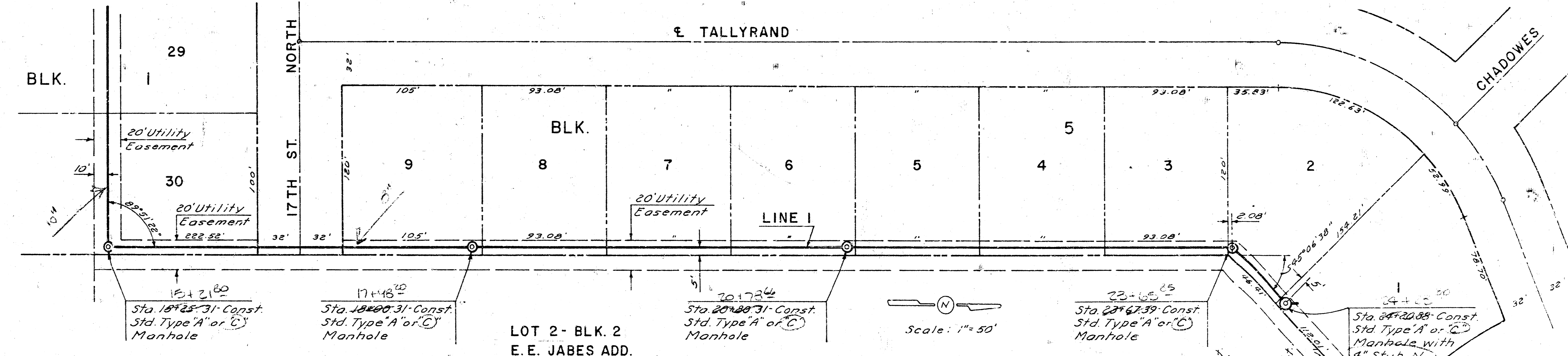
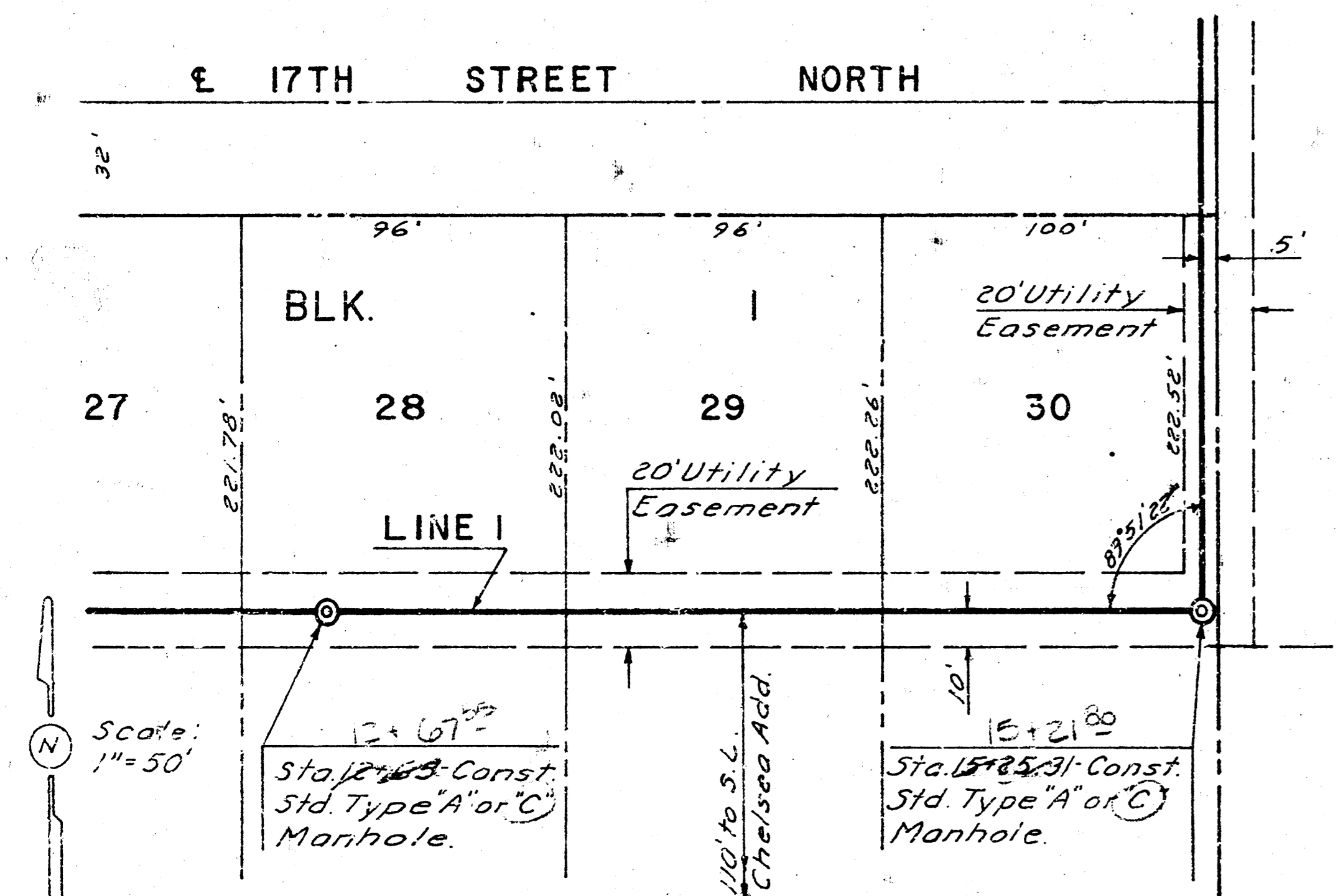
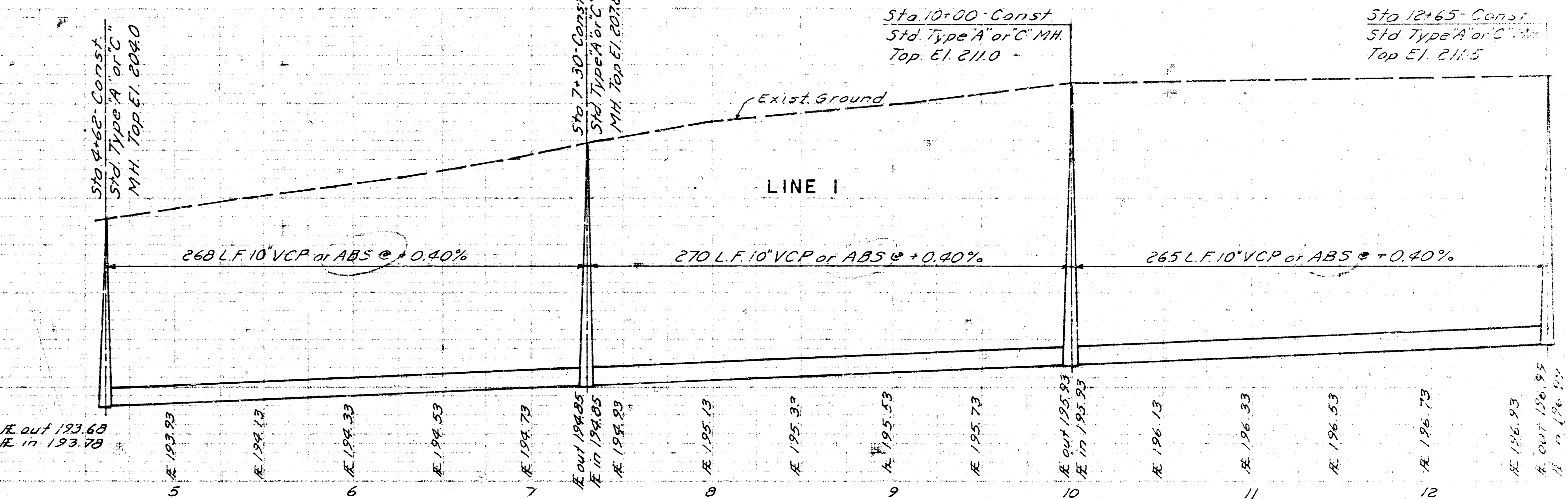
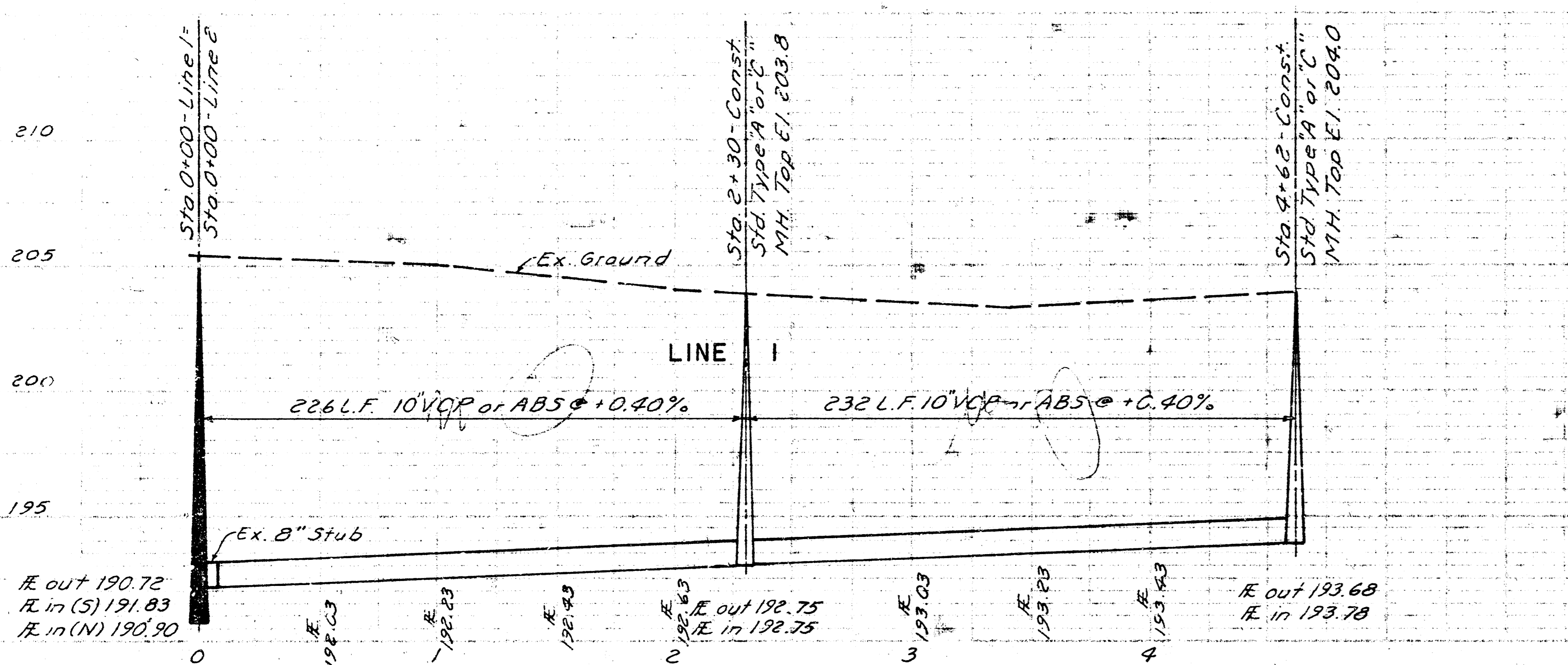
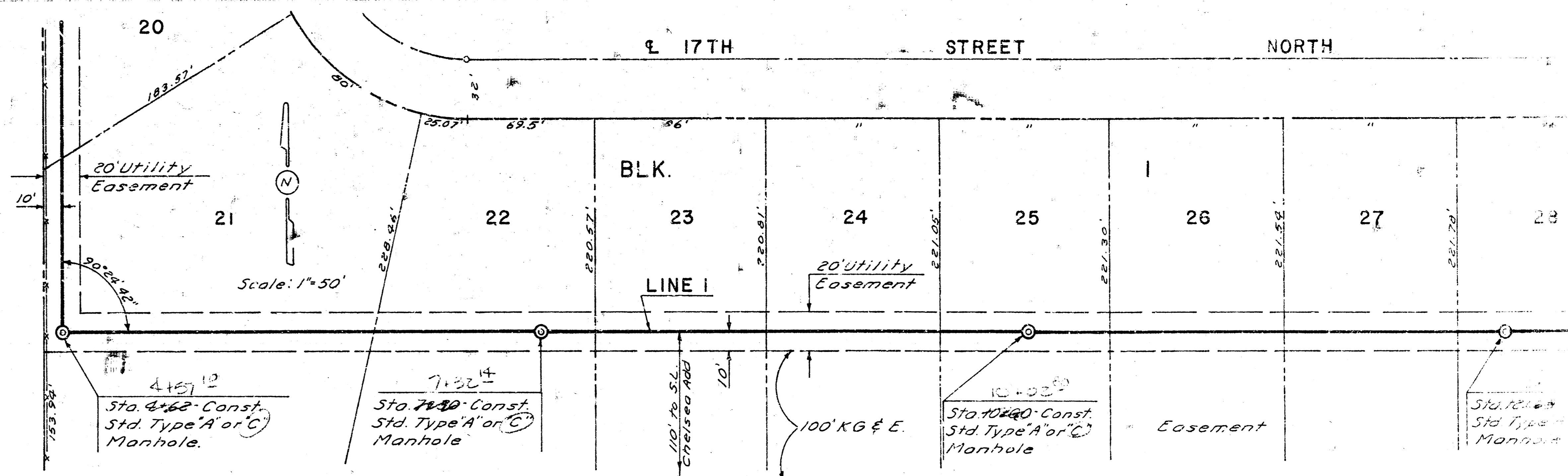
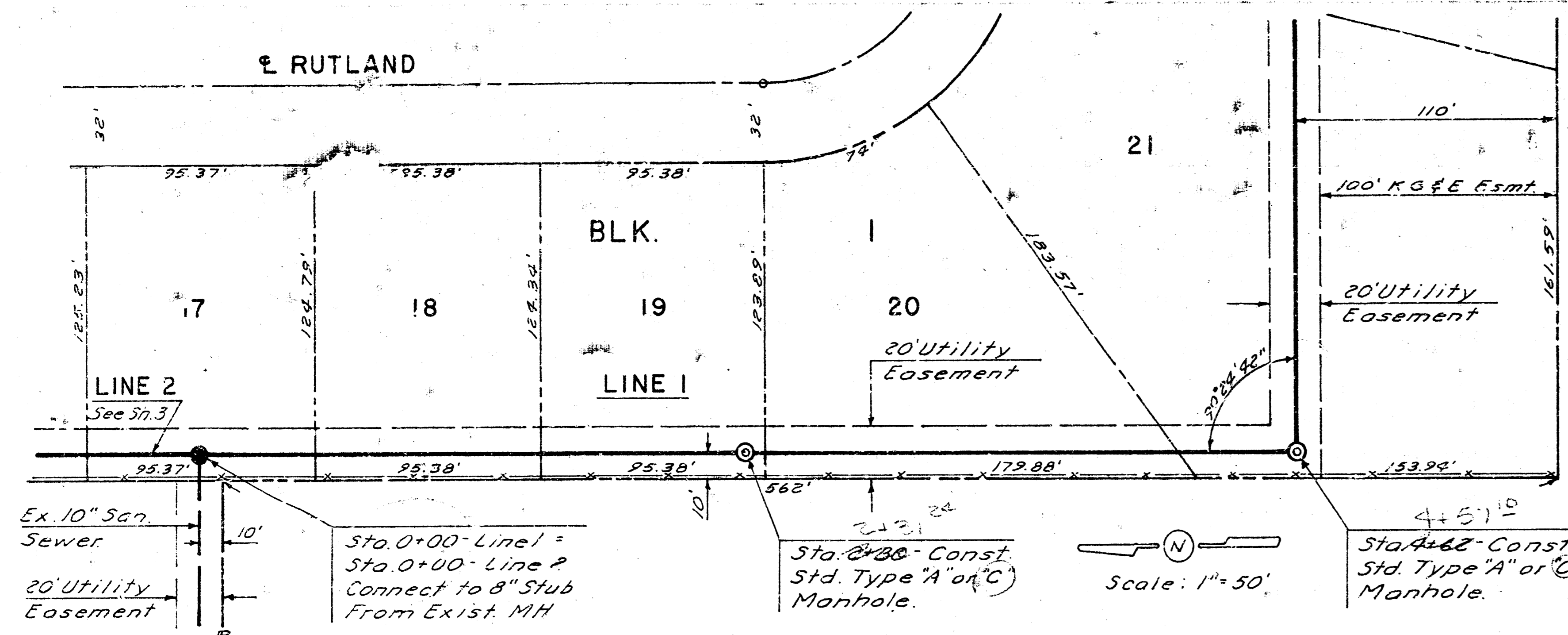
B.M. - R.R. Spk. in PP. 55'E. of SE Cor. of Add. - El. 210.97

B.M. - "d" Cut E. Cor. E. leg. of power tower, 35'W. & 20'N. SW Cor. Add. - El. 209.21

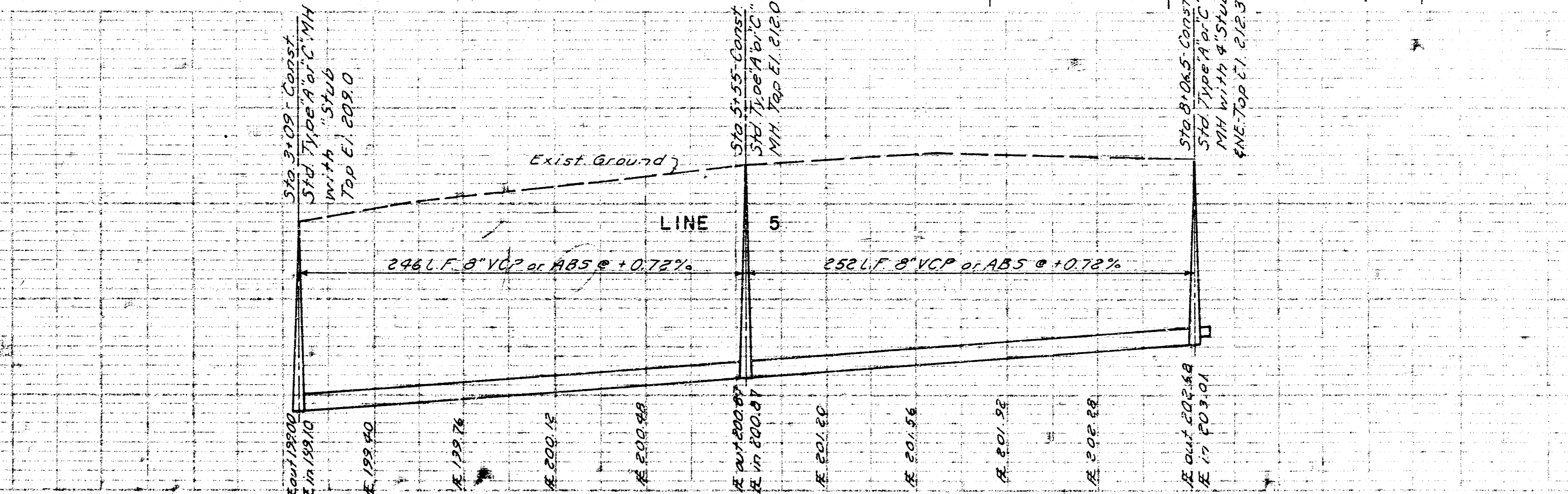
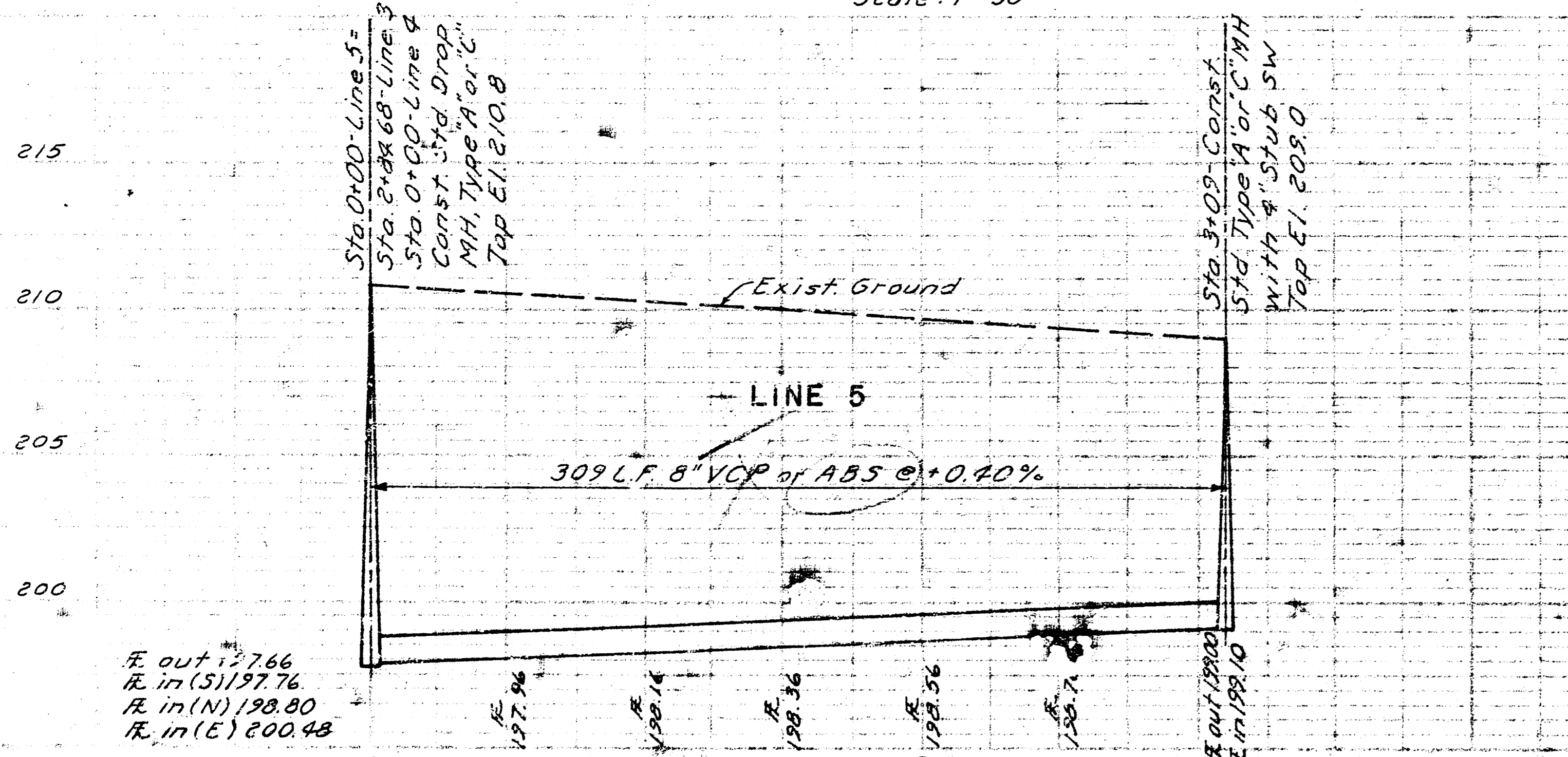
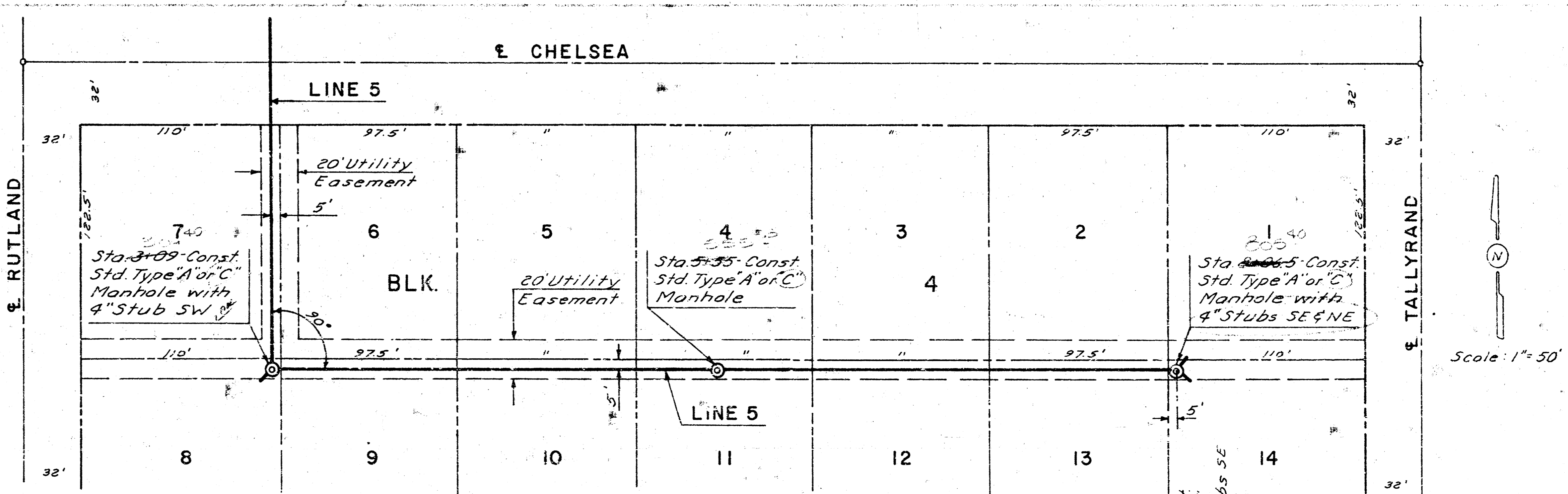
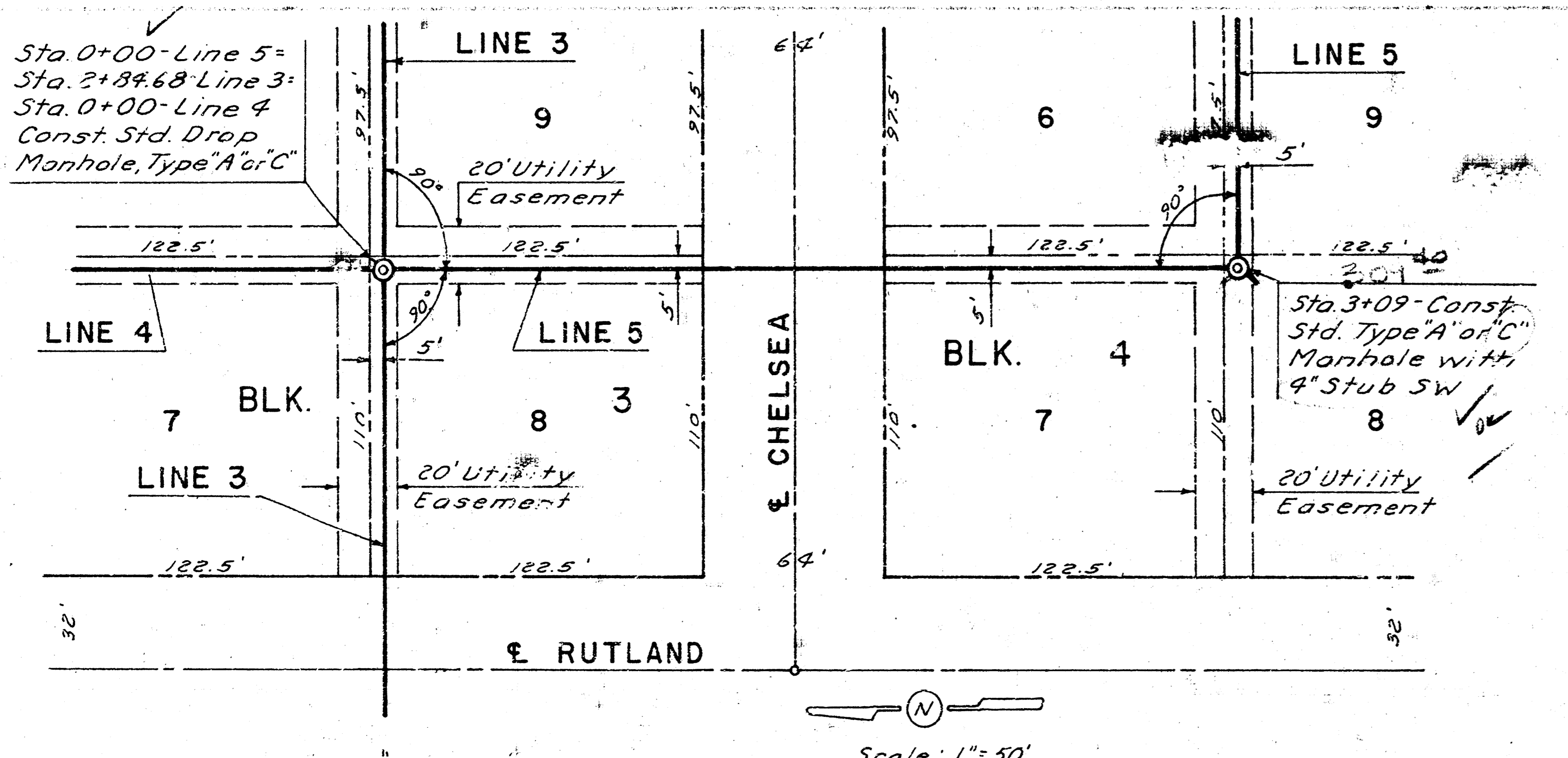
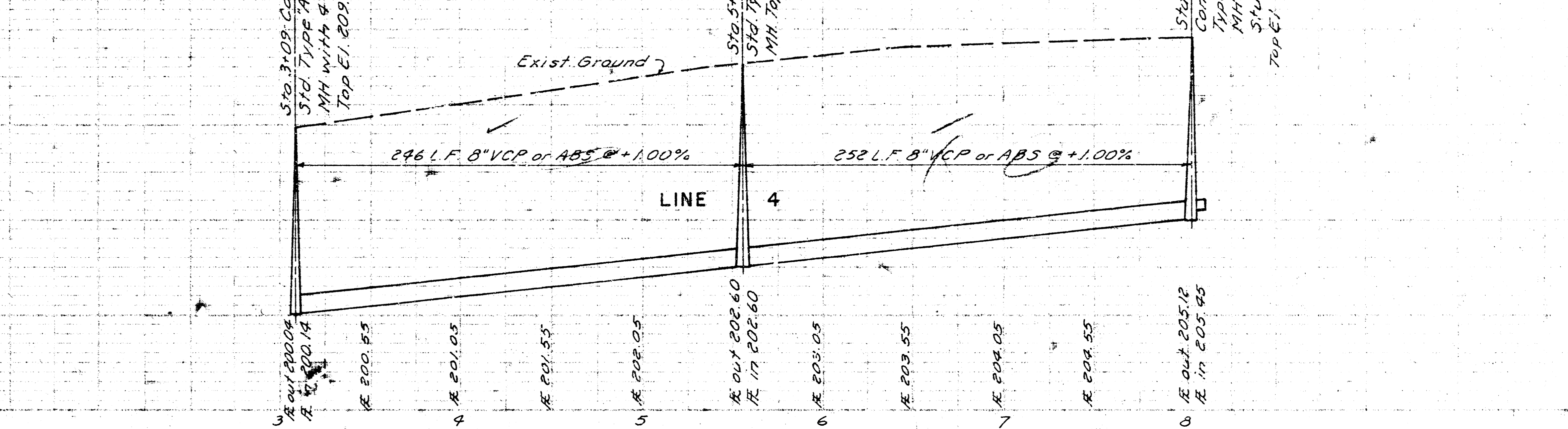
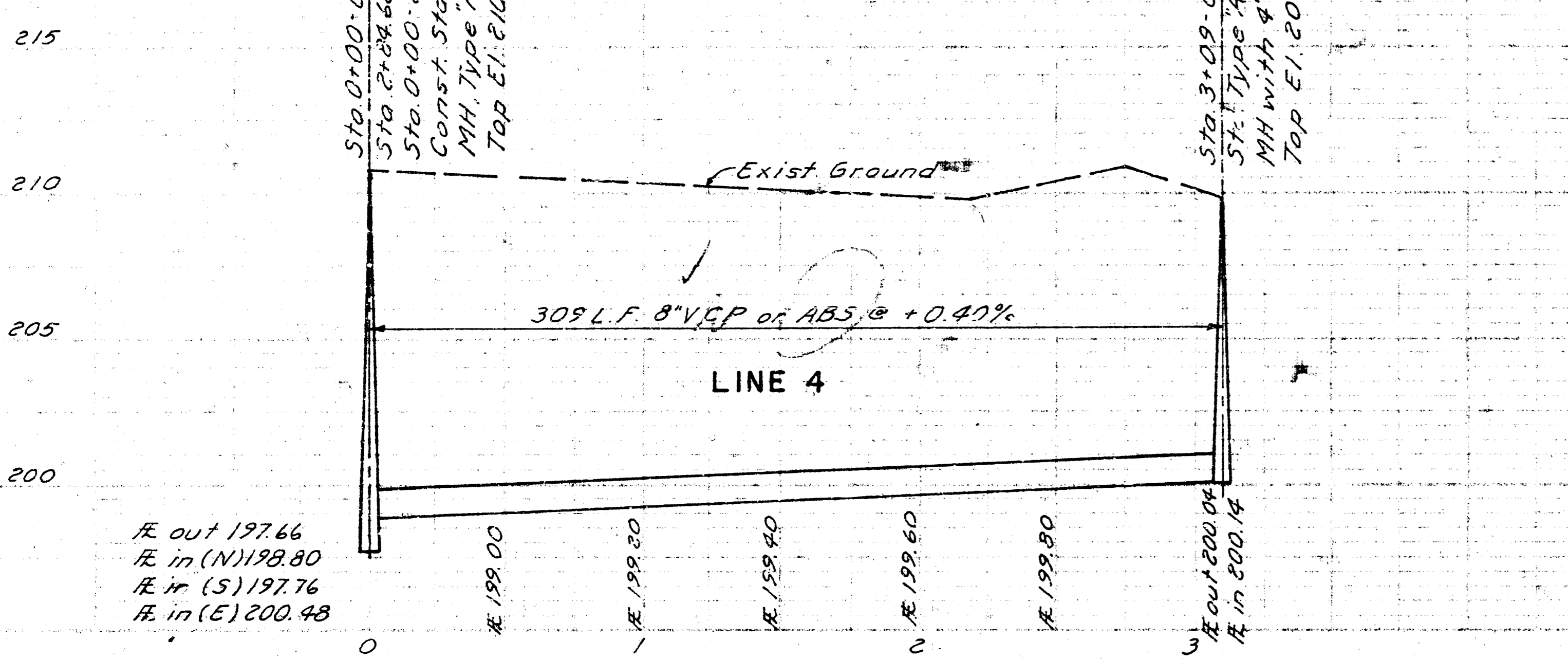
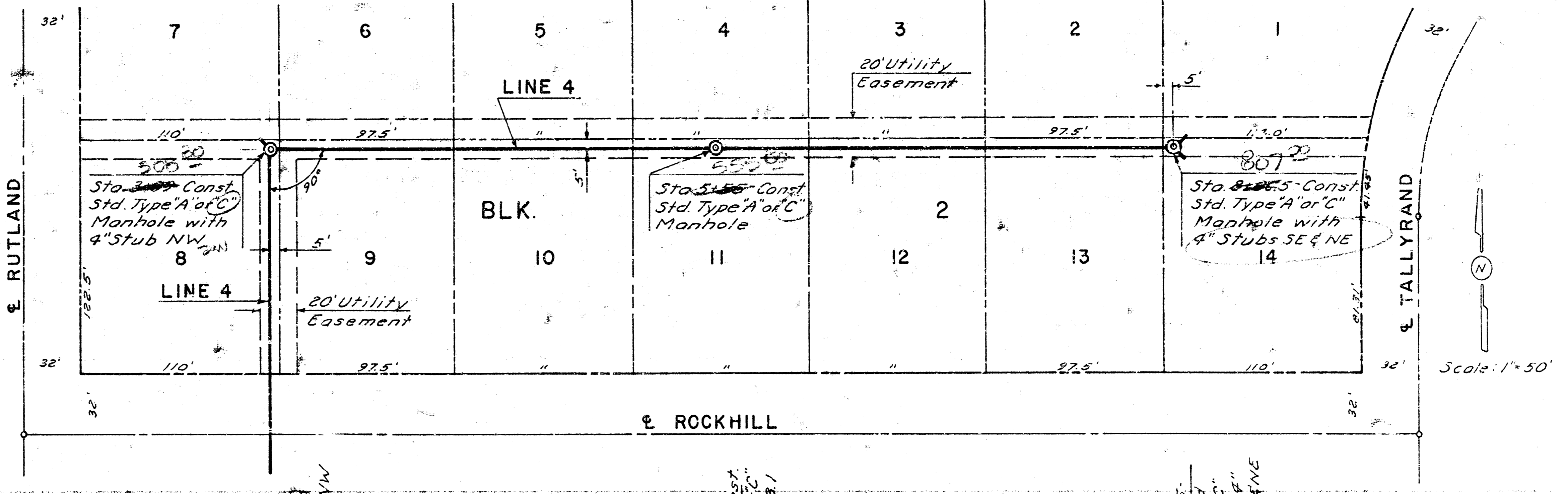
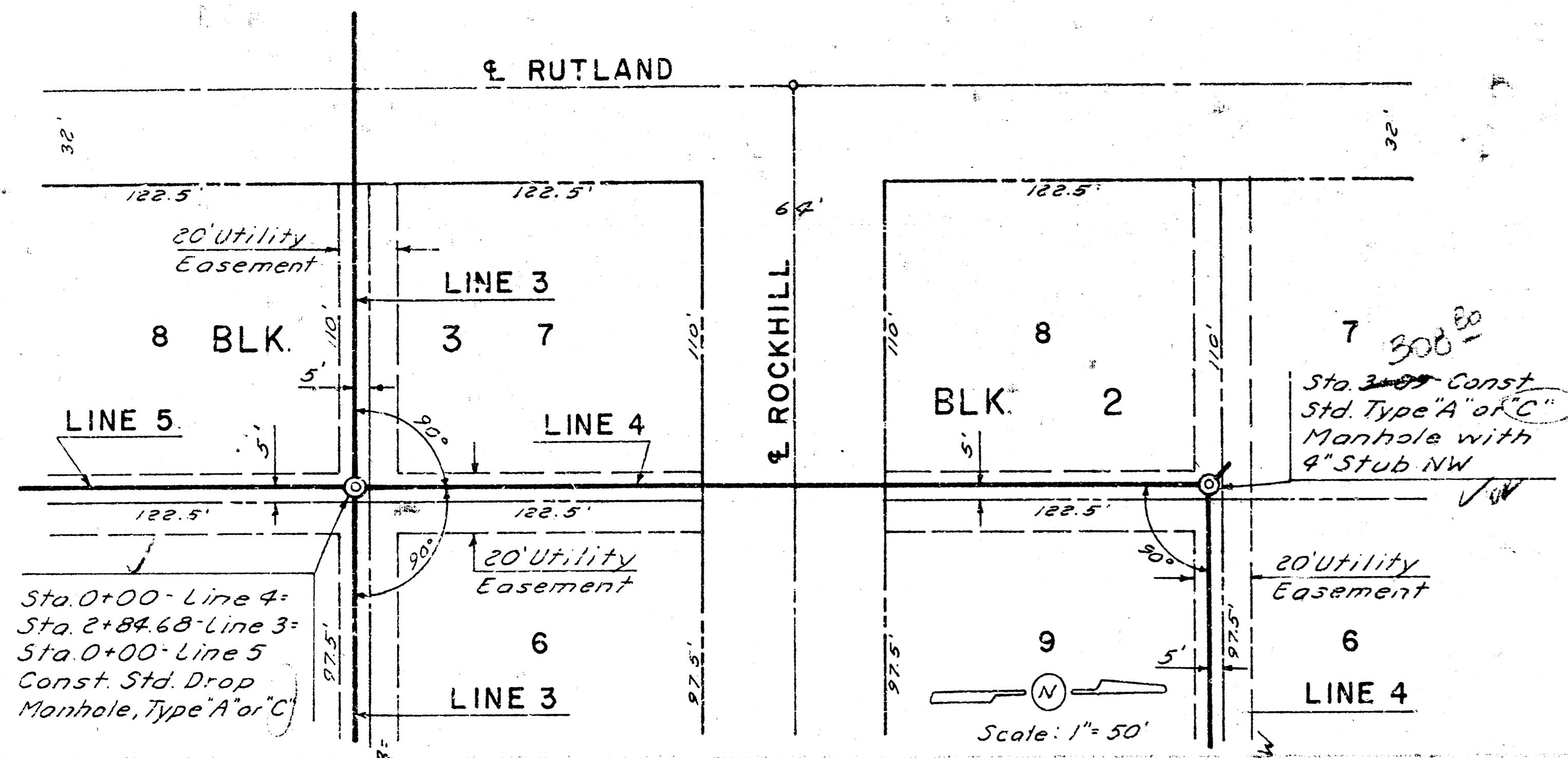
B.M. - Nut on finger size bolt on ground clamp on E. side SE leg. power tower, 205' S. & 50' W. NW Cor. Add. - El. 205.24

B.M. - "M" in weller - Fire Hyd. NE Cor. of Add. - El. 215.79



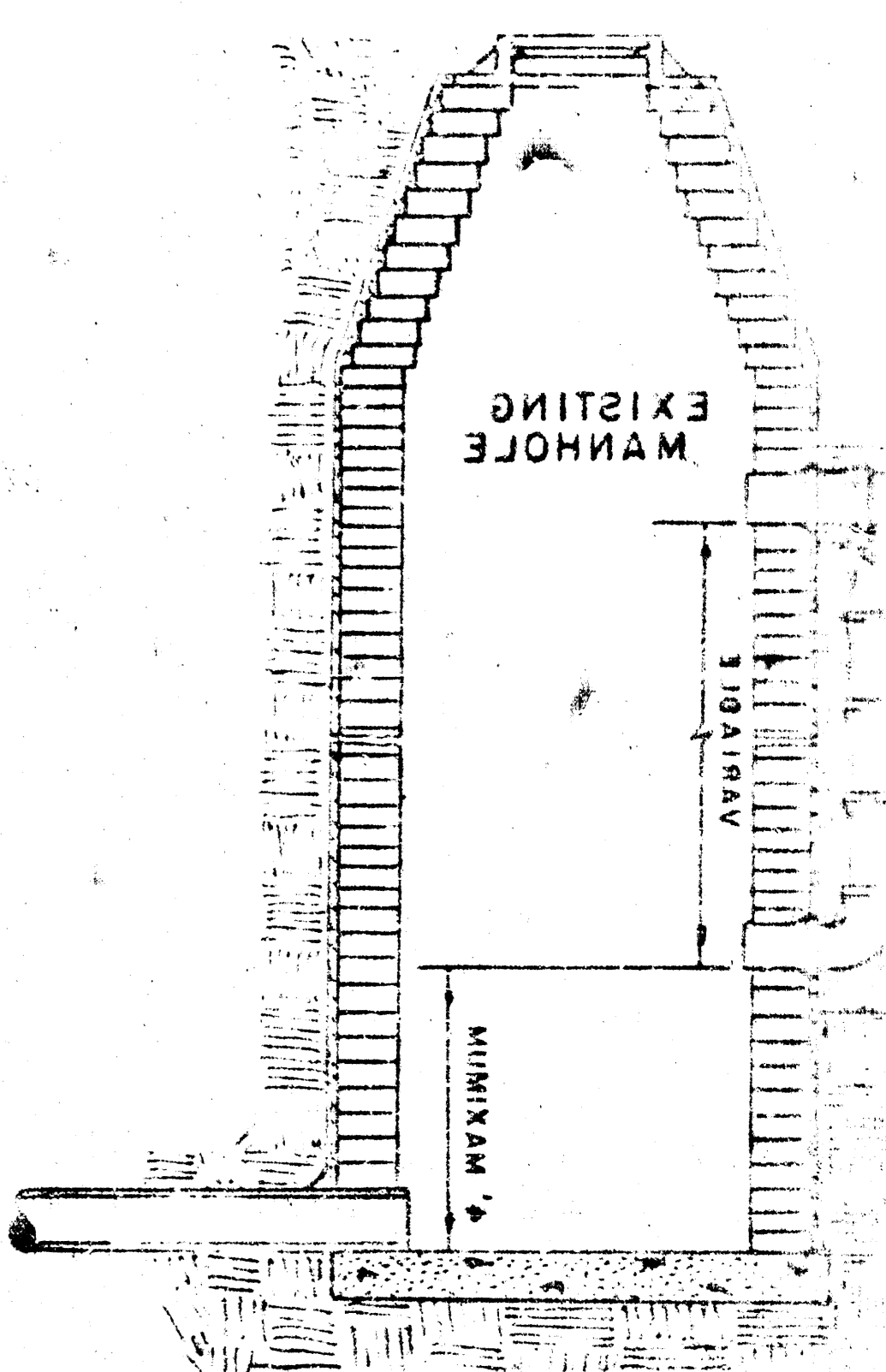






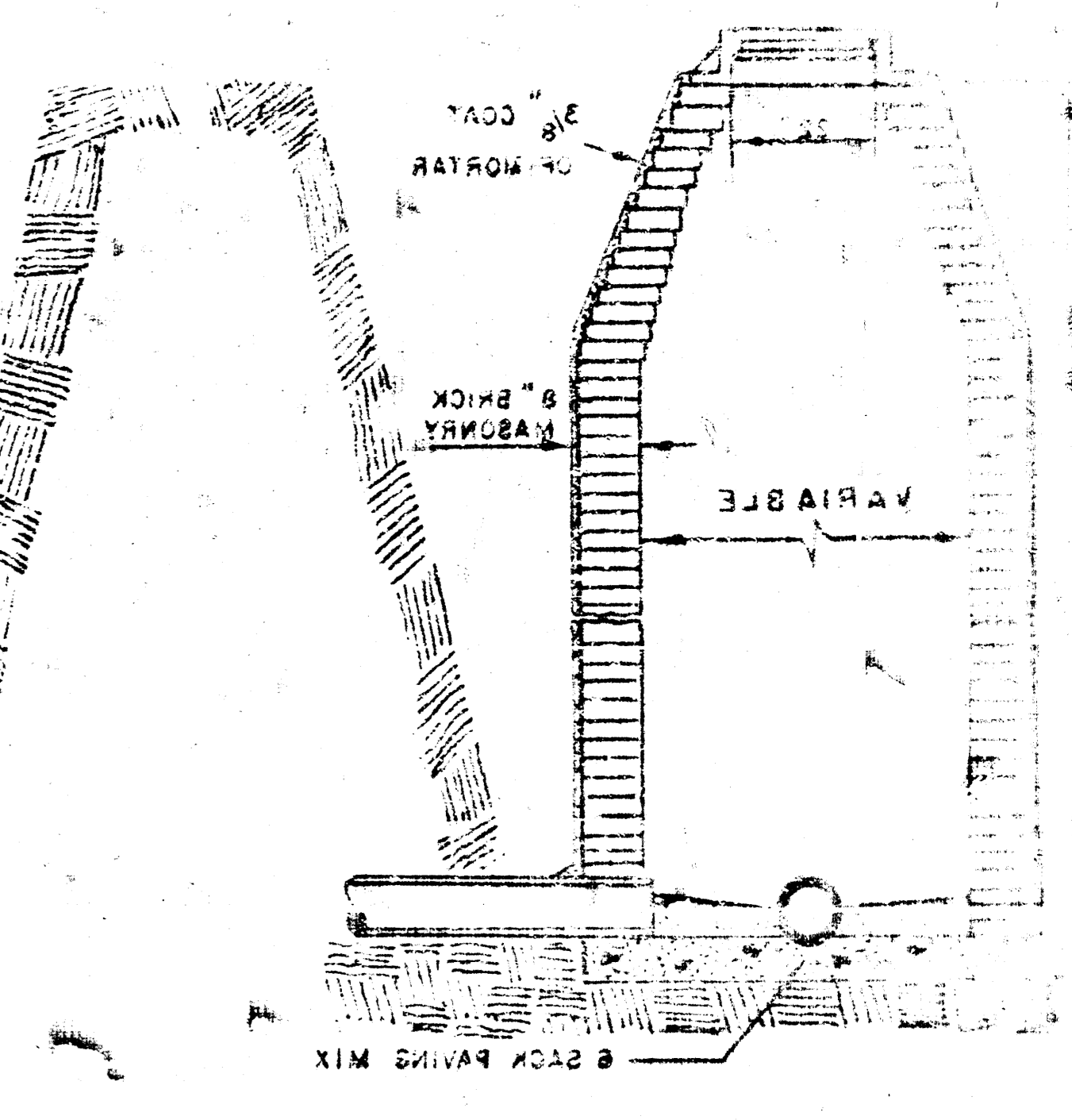
MANHOLES  
 THE CONCRETE USED FOR MORTAR IN  
 MANHOLES SHALL CONTAIN 8 SACKS OF  
 CEMENT PER CUBIC YARD.  
 STANDARD MANHOLES AND DROP  
 MANHOLES, REGARDLESS OF DIAMETER,  
 SHALL BE BID AT ONE PRICE AS  
 STANDARD MANHOLES.  
 SINGLE DOUBLE OUTSIDE  
 DROP MANHOLES SHALL BE BID AT ONE  
 PRICE AS OUTSIDE DROP MANHOLES.  
 ALL MANHOLES WITH PIPES LARGER  
 THAN 24" SHALL BE 3" DIAMETER UNLESS  
 OTHERWISE SPECIFIED ON PLAN. ALL M.H.'S  
 WITH PIPES 24" & SMALLER SHALL BE 4" DIA.

DETAIL OF DROP STACK  
 IN GROUND WATER

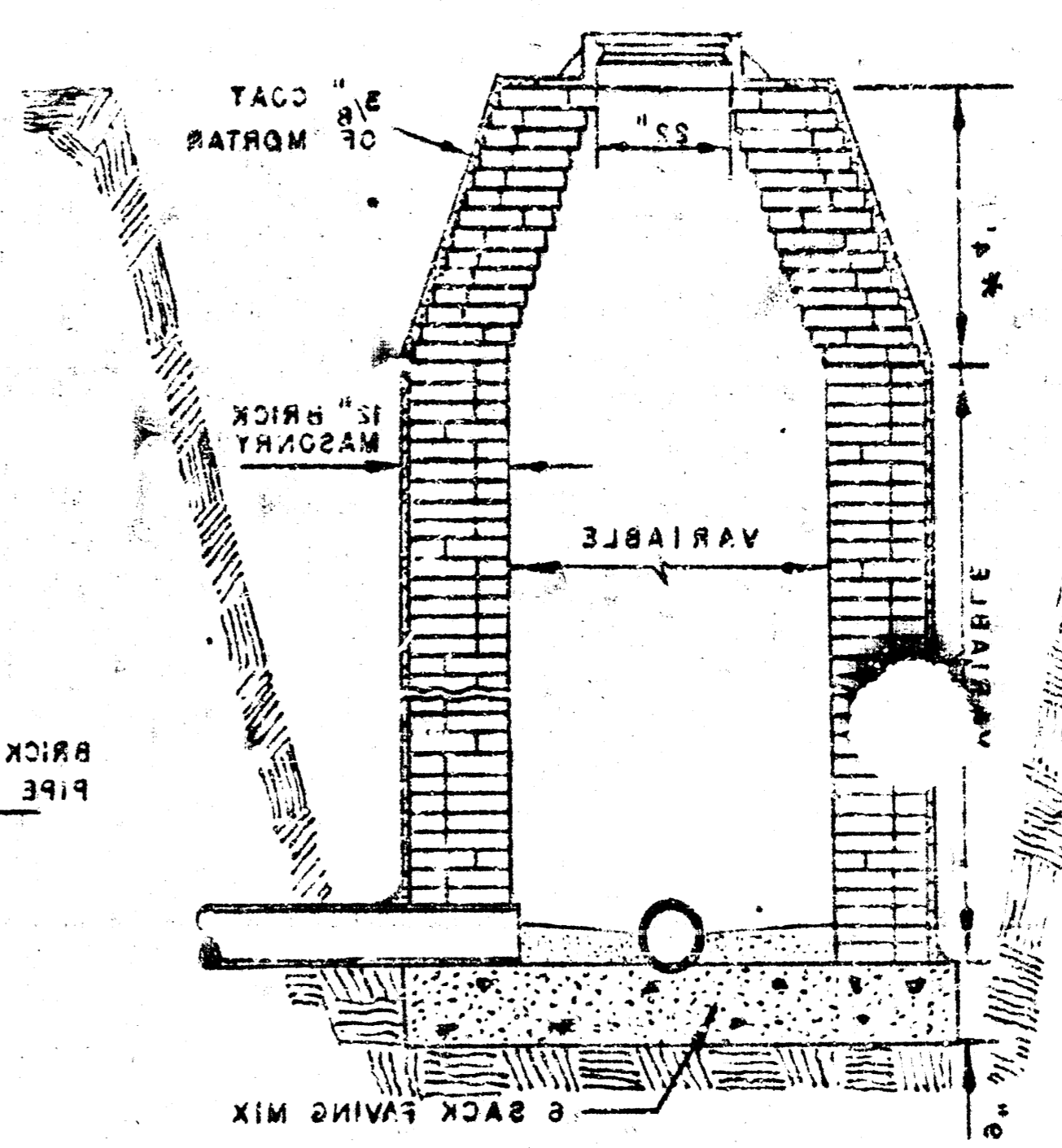


\* DRAW = 6" ON 2' DIA. M.H.

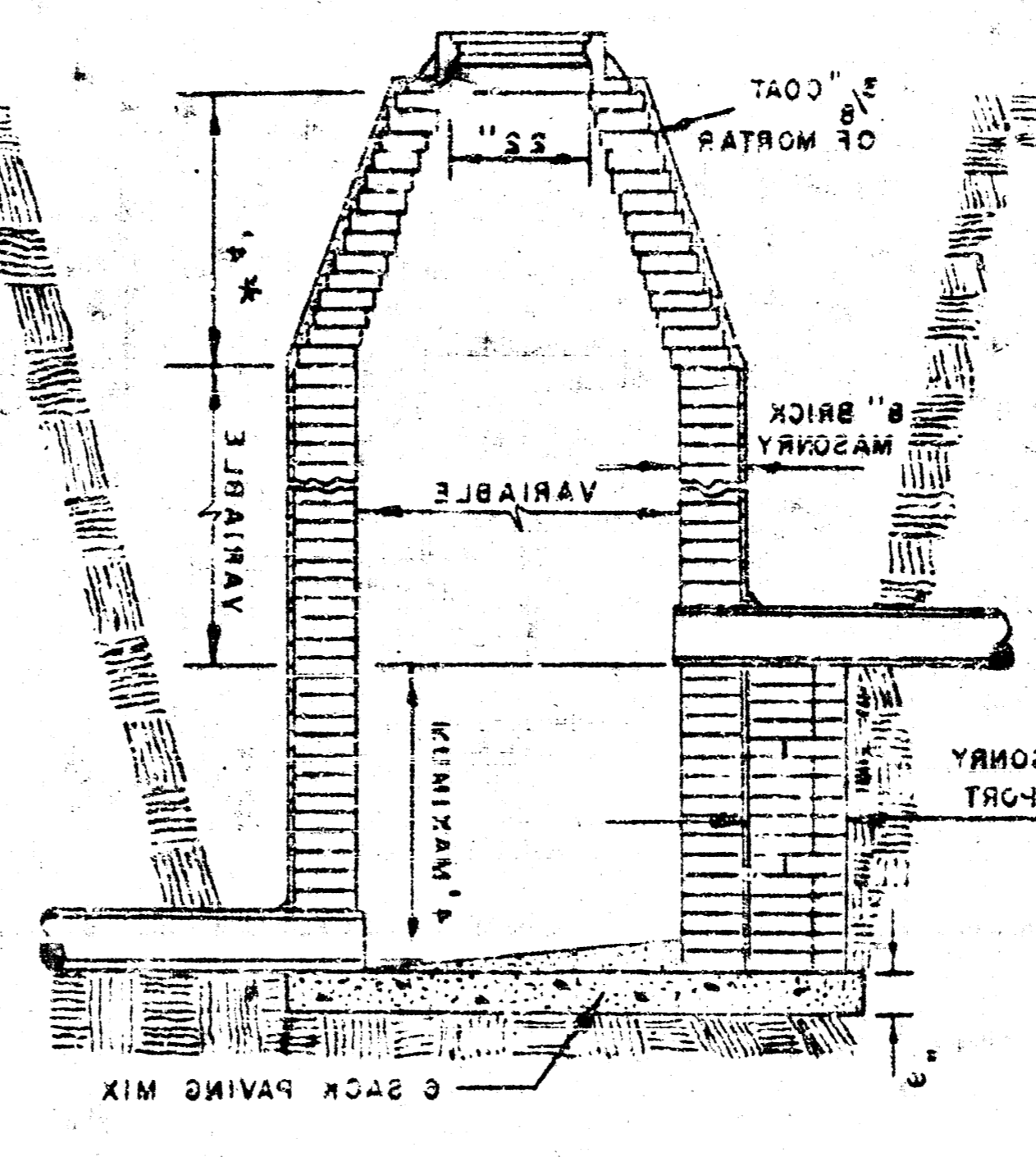
STANDARD MANHOLE  
 TYPE "A"



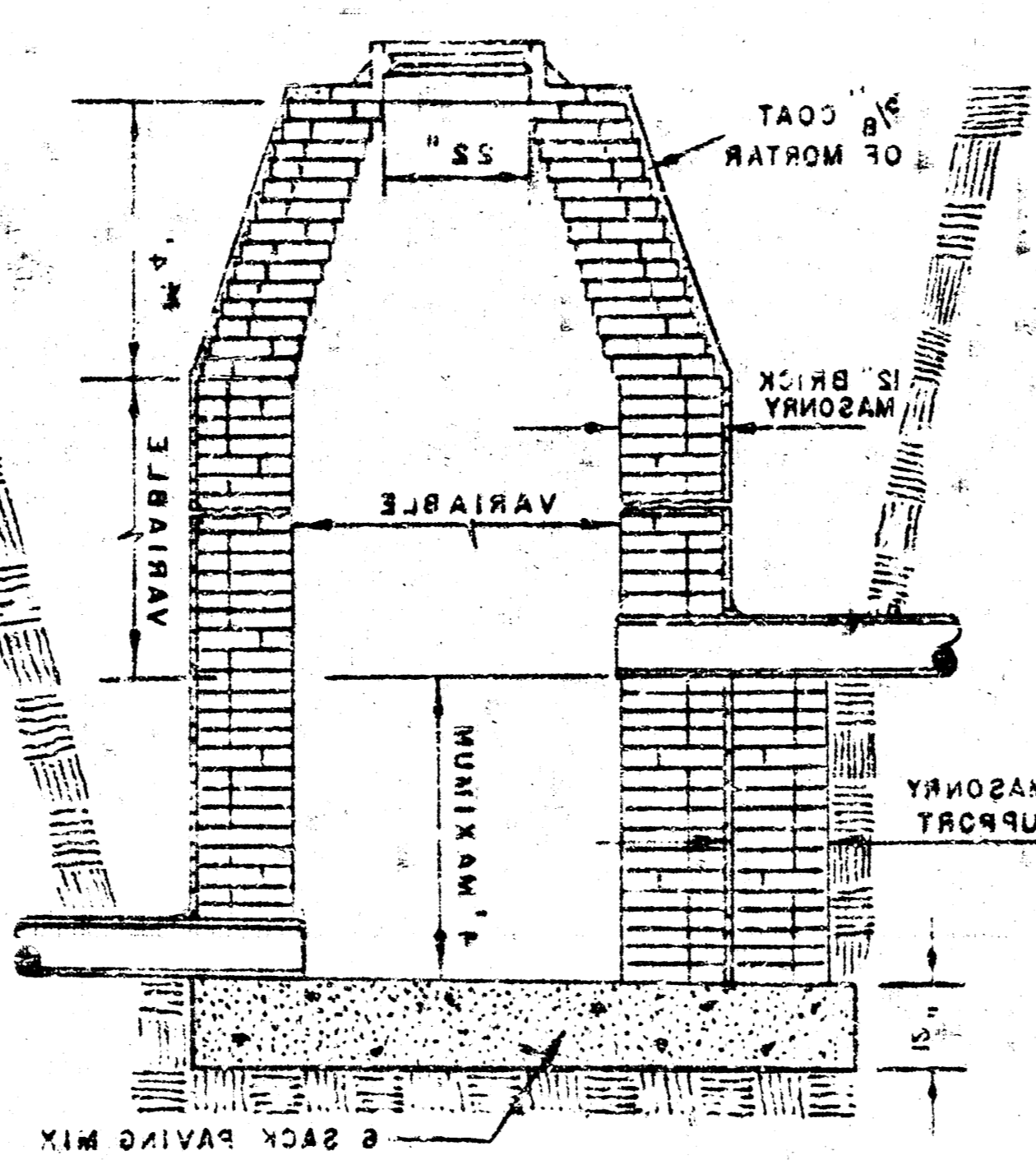
STANDARD MANHOLE  
 TYPE "B"



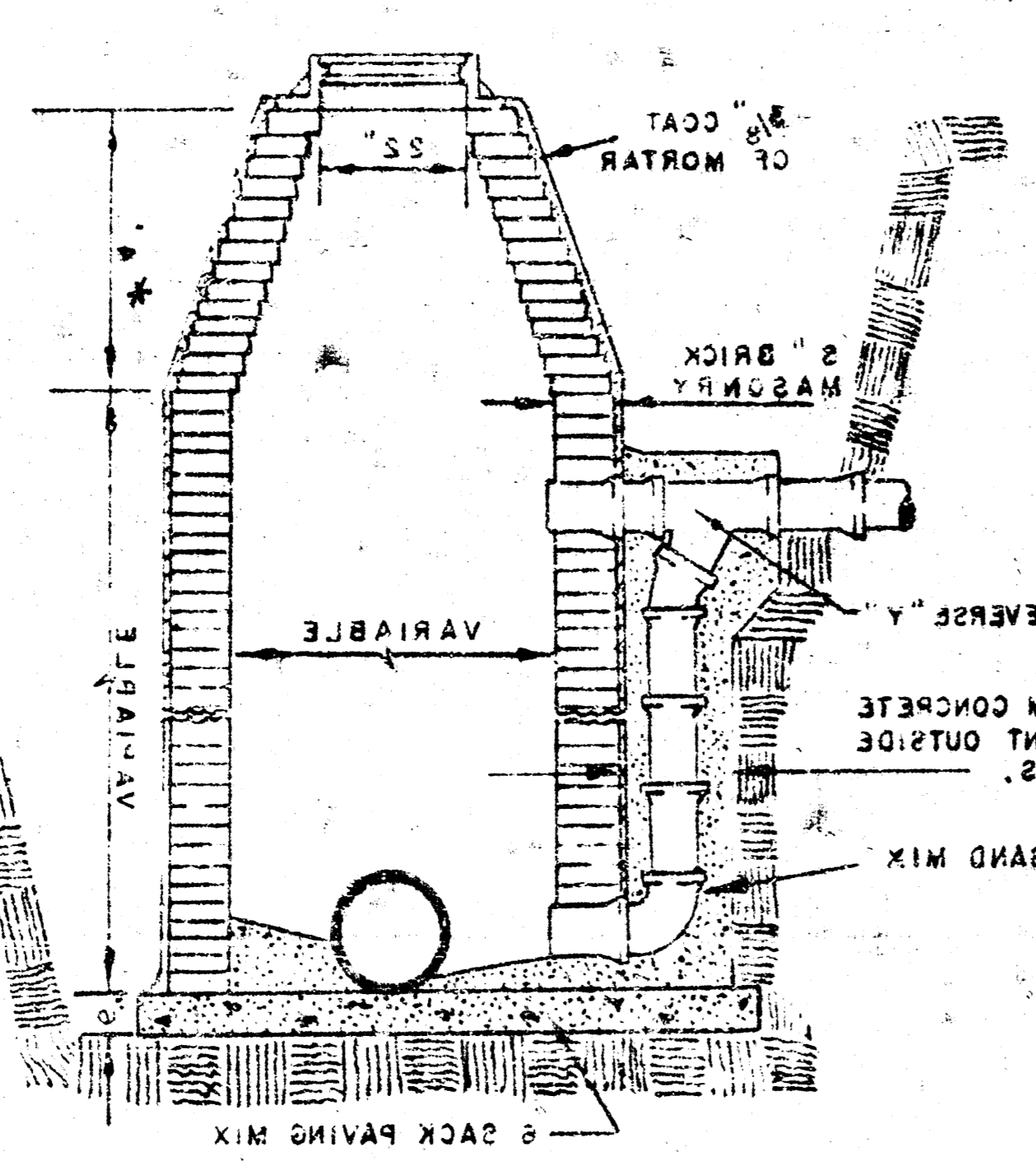
DROP MANHOLE  
 TYPE "A"



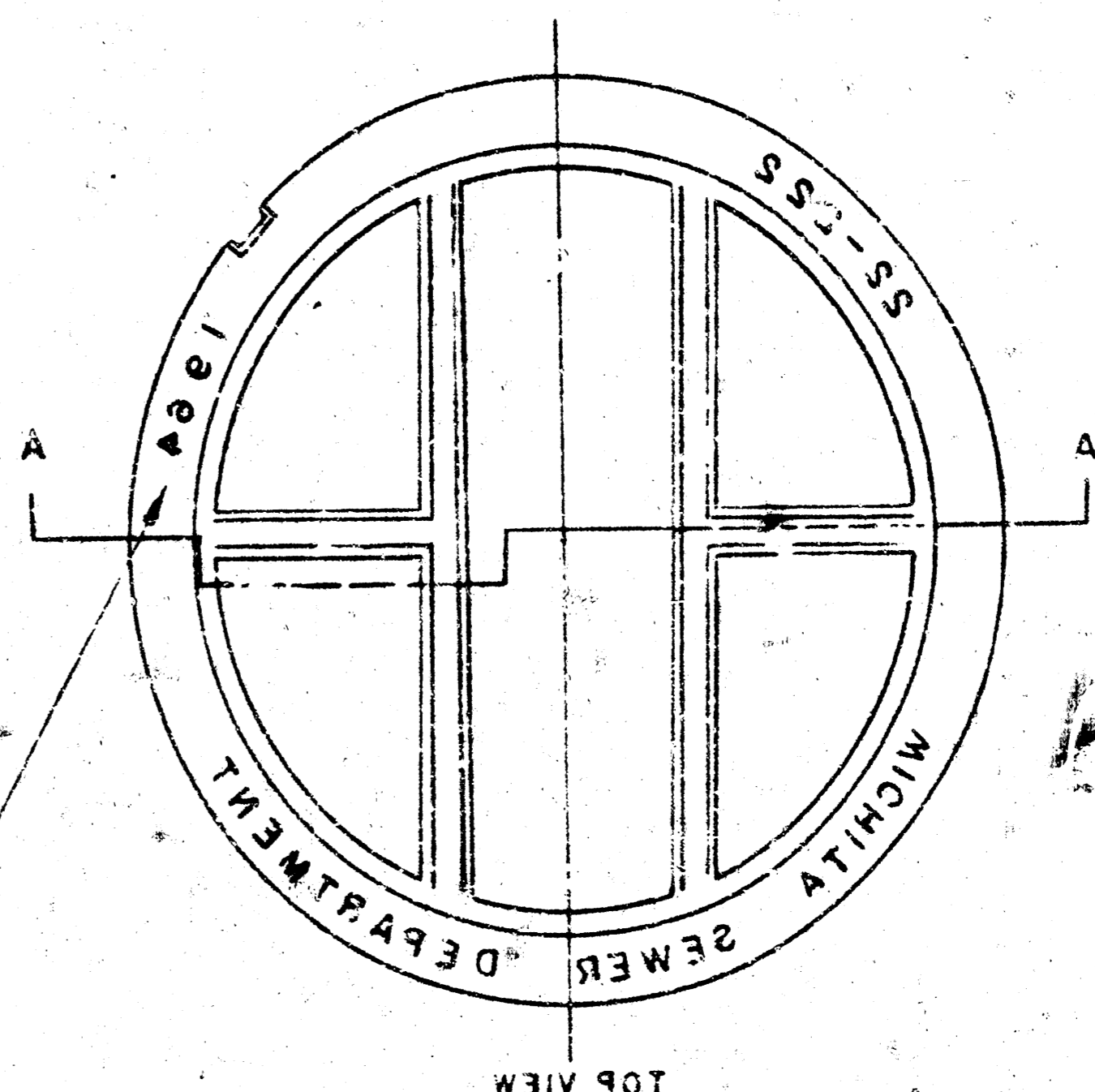
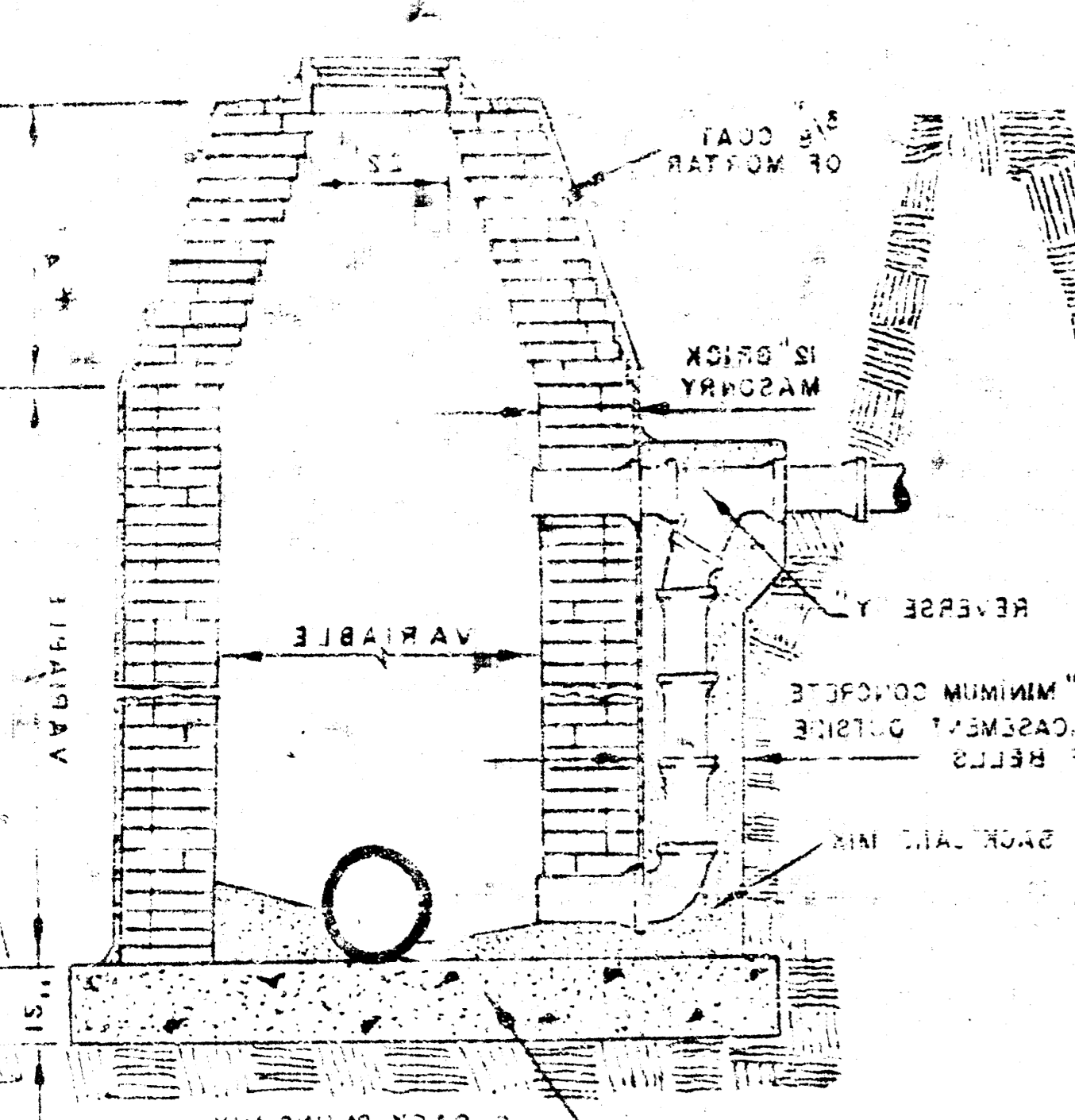
DROP MANHOLE  
 TYPE "B"



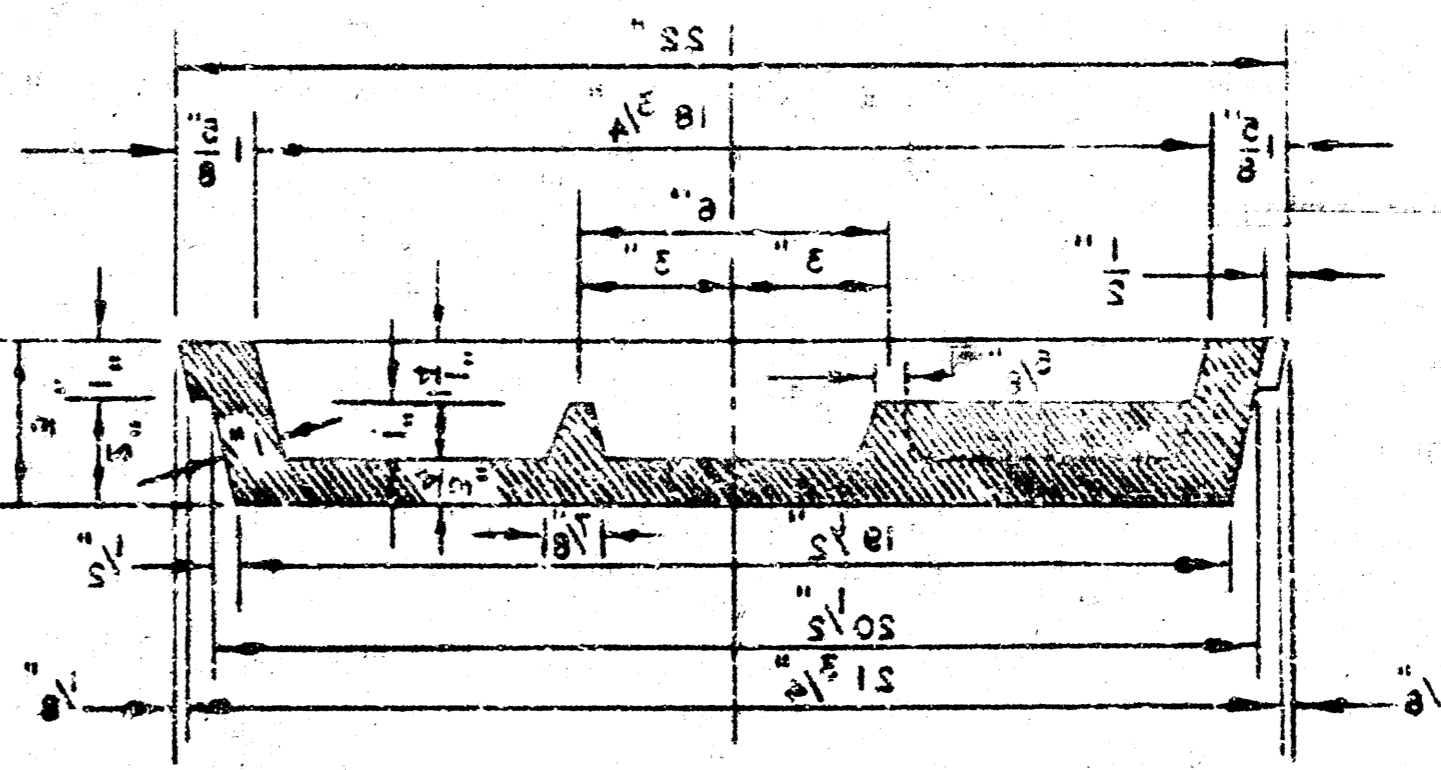
OUTSIDE DROP MANHOLE  
 TYPE "A"



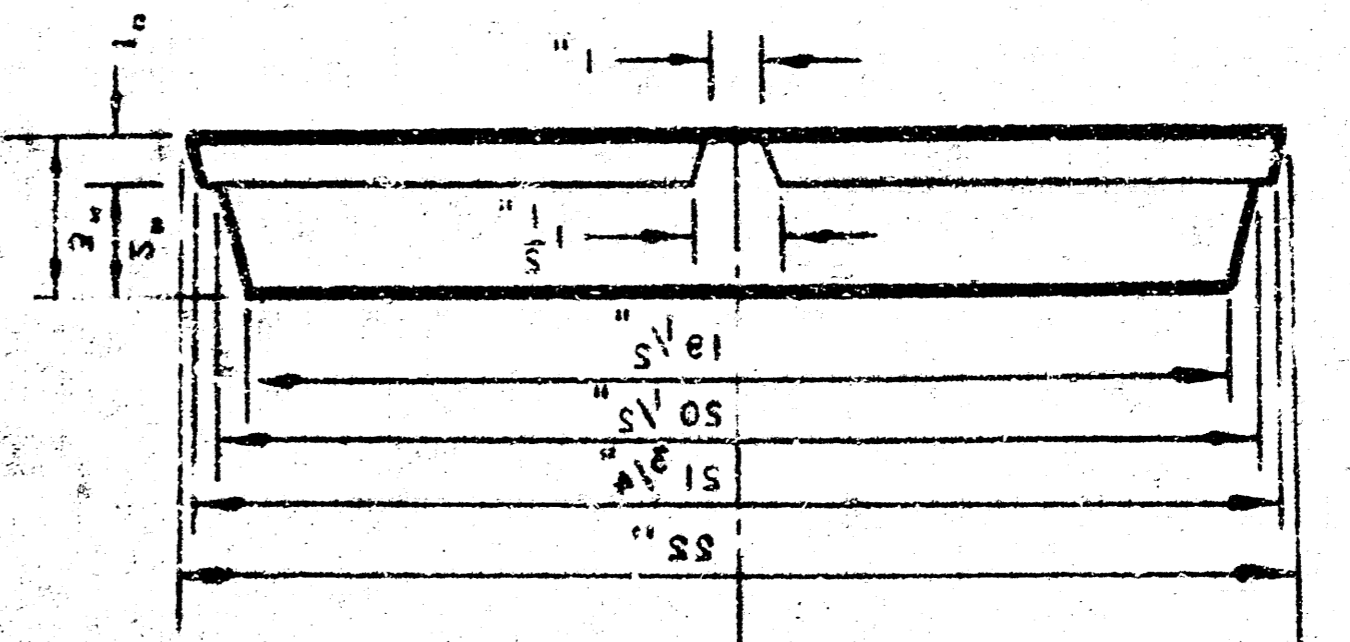
OUTSIDE DROP MANHOLE  
 TYPE "B"



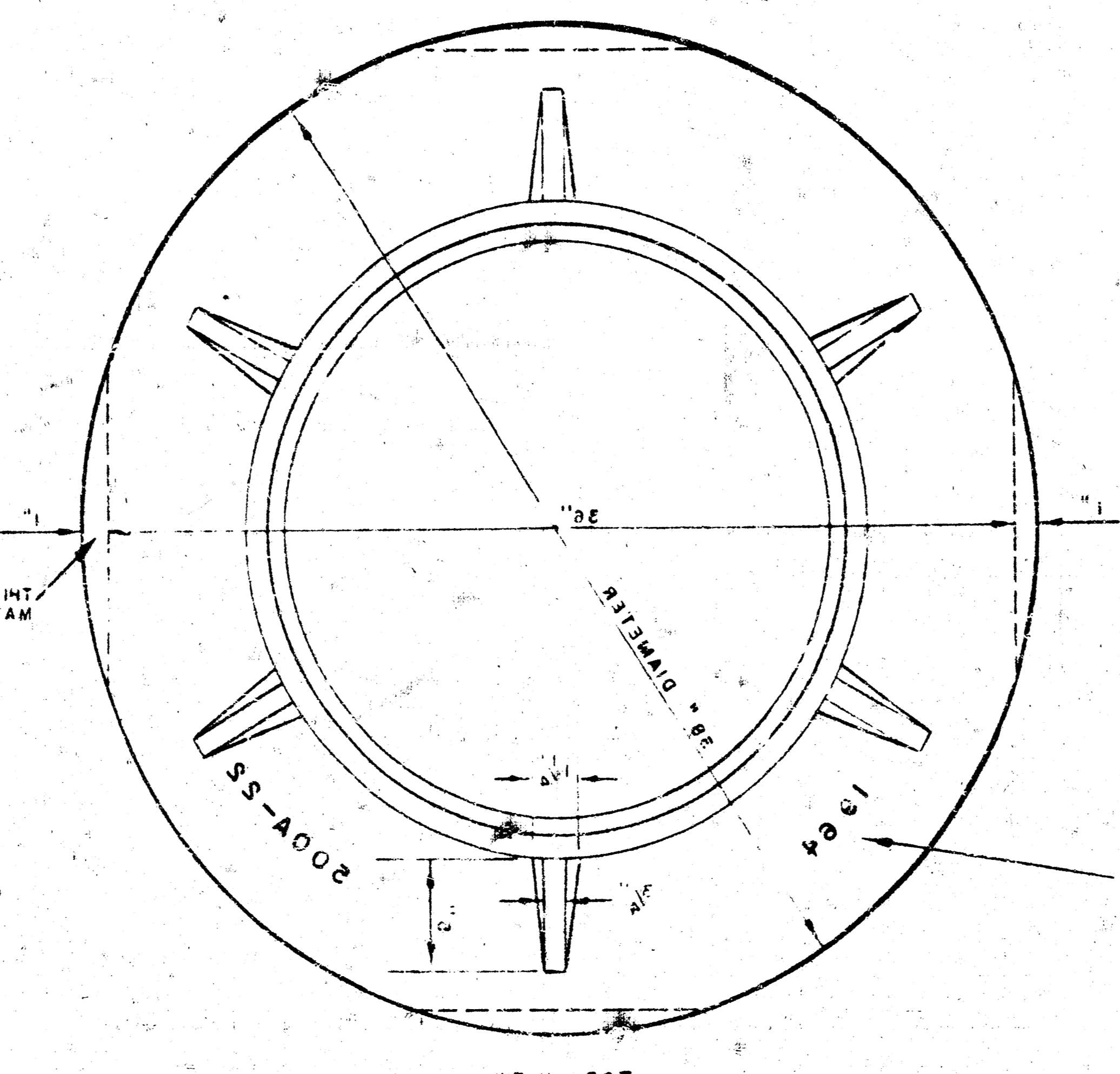
MANHOLE COVER  
 WEIGHT 110 LB.



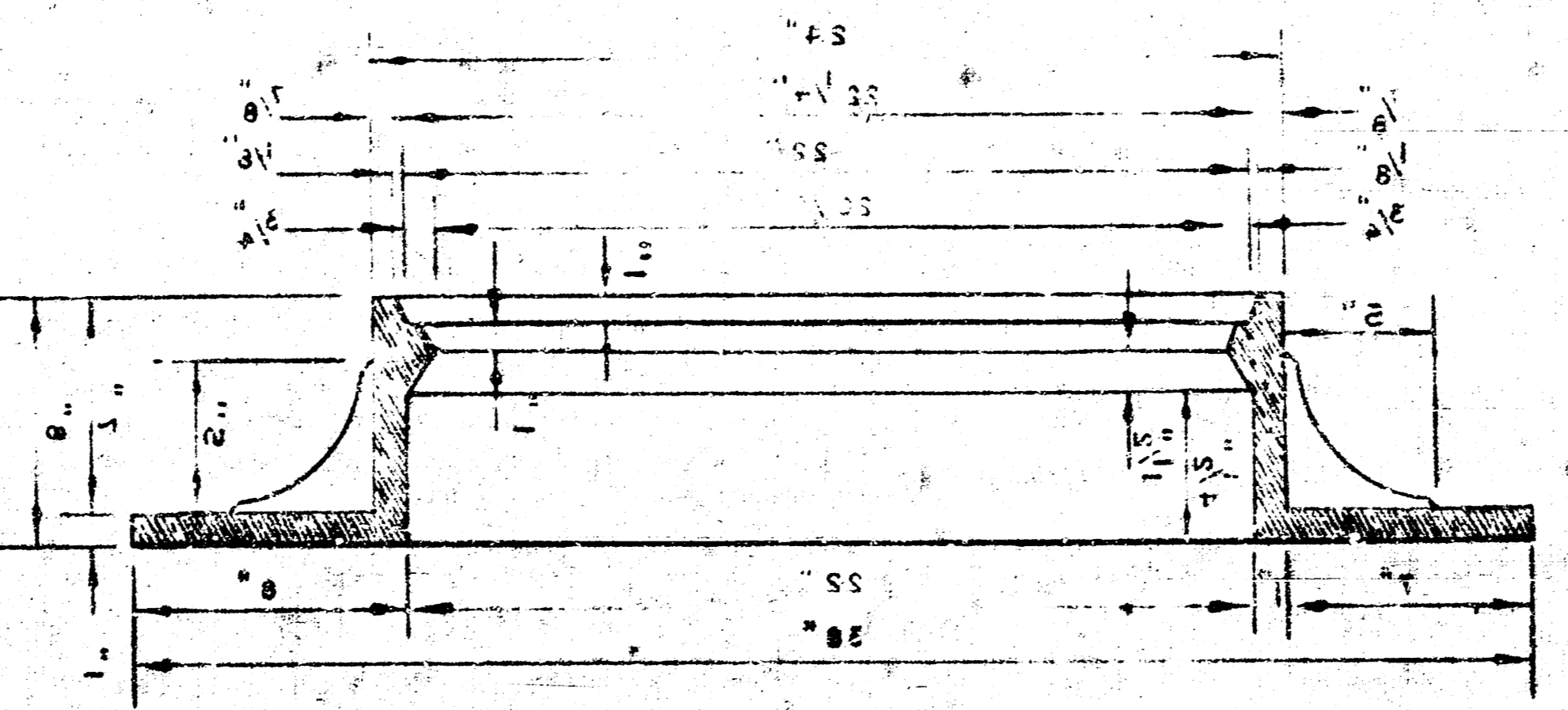
MANHOLE COVER



MANHOLE COVER



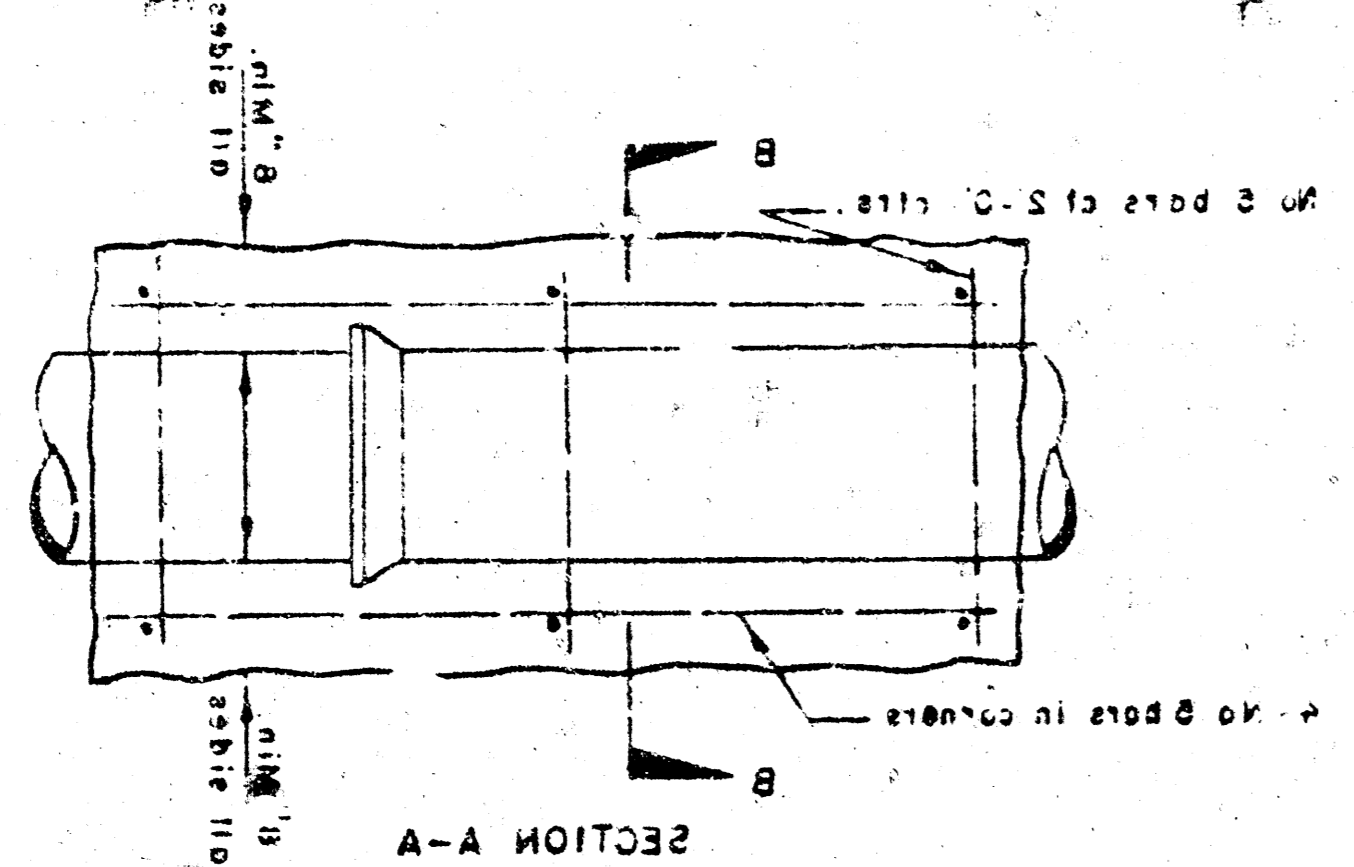
MANHOLE RING  
 WEIGHT 350 LB.



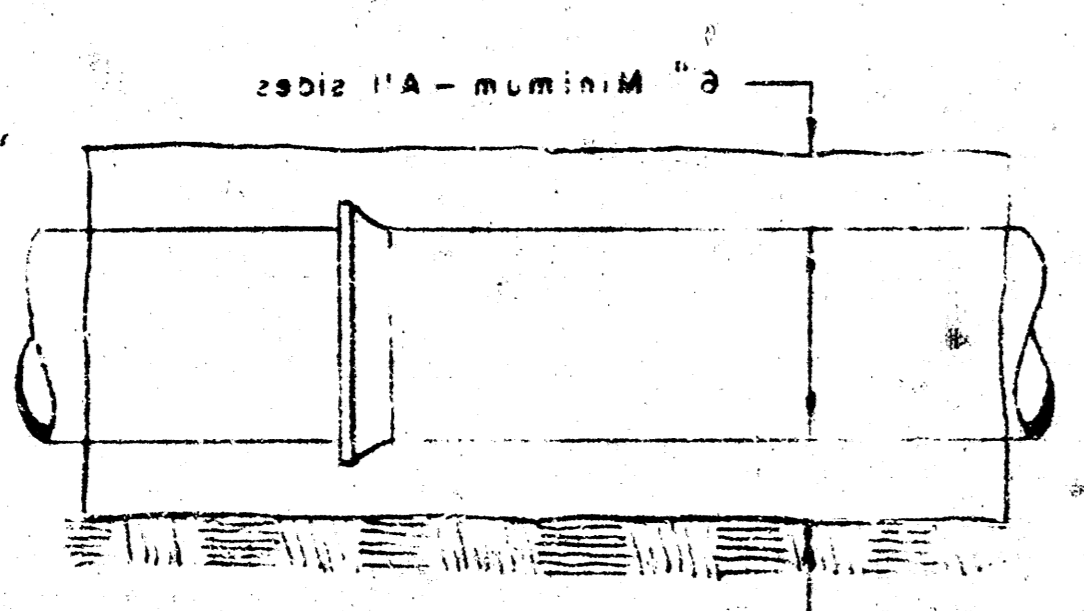
MANHOLE RING

OUTSIDE CIRCUMFERENCE OF COVER  
 AND THE INNER FACE AND SEAT OF  
 RING TO BE MATCHING FIT.

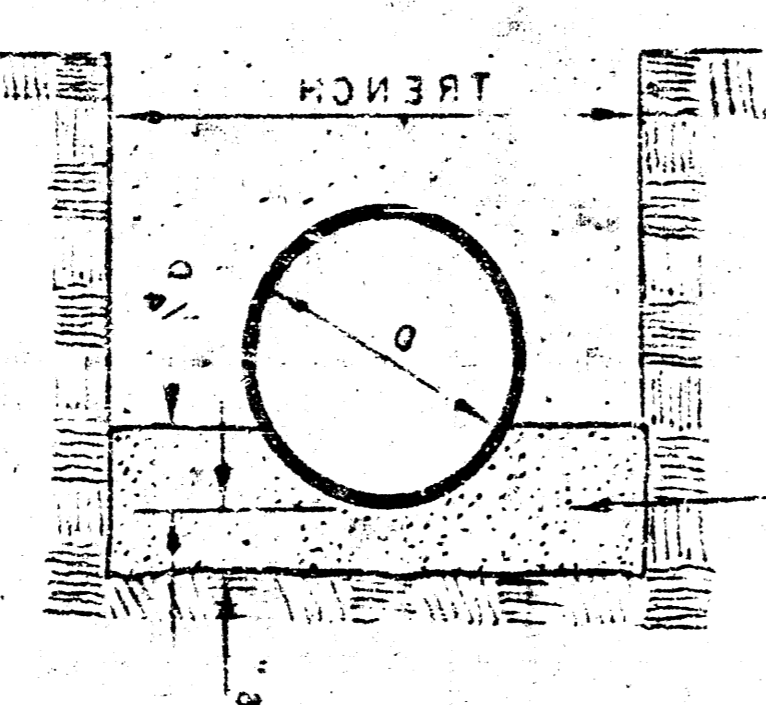
REINFORCED CONCRETE ENGASEMENT  
 FOR STRENGTH



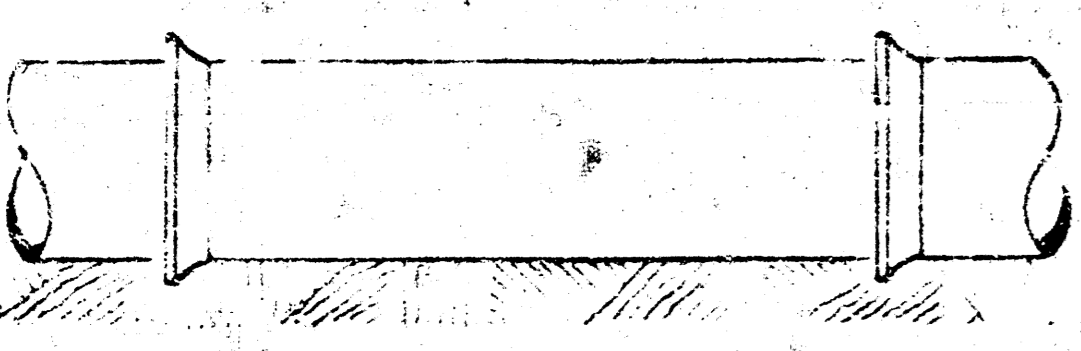
CONCRETE ENGASEMENT  
 FOR COVER



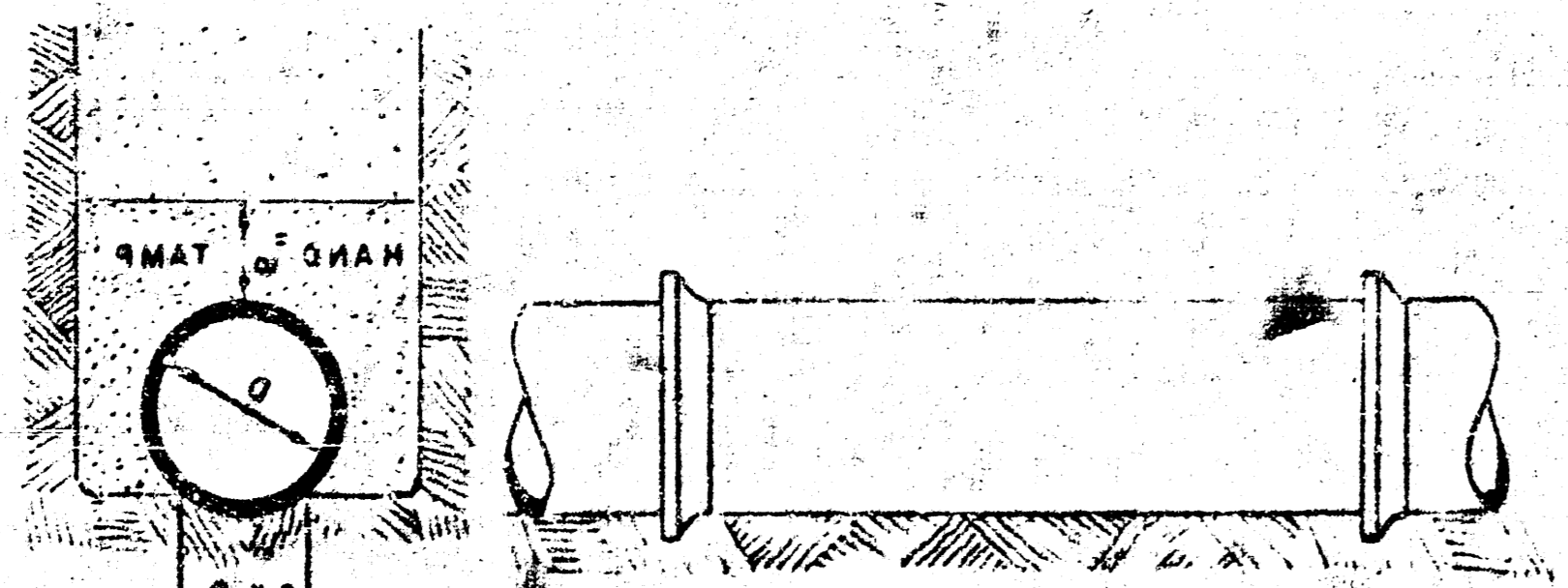
DETAIL OF CONCRETE CRADLE



ORDINARY BEDDING METHOD  
 FOR CLAY PIPE



ORDINARY BEDDING METHOD  
 FOR REINFORCED CONCRETE PIPE



DETAILS OF  
 SEWER APPURTENANCES  
 ADOPTED AS STANDARD DESIGN  
 BY  
 ENGINEERING DIVISION  
 CITY OF WICHITA, KANSAS  
 R. W. LINN CITY ENGINEER

GENERAL NOTES

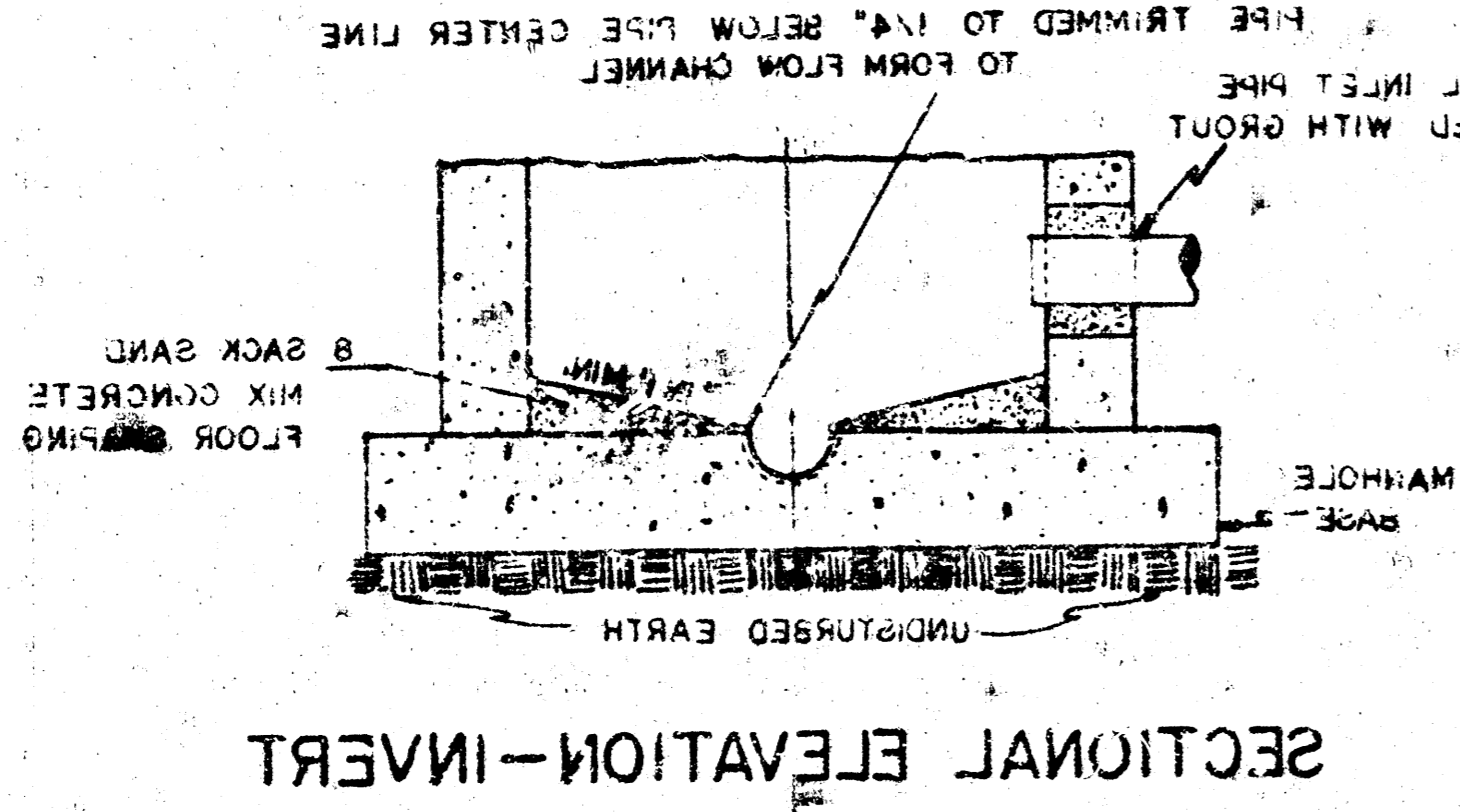
MORTAR USED IN MASONRY CONSTRUCTION SHALL CONTAIN 8 SACKS OF CEMENT PER CUBIC YARD.

STANDARD MANHOLES TYPE "C" AND STANDARD DROP MANHOLES TYPE "C" SHALL BE BID AS STANDARD MANHOLES FOR THE TYPE AND DIAMETER INDICATED.

OUTSIDE DROP MANHOLES TYPE "C" SHALL BE BID AS STANDARD OUTSIDE DROP MANHOLES FOR THE TYPE AND DIAMETER INDICATED. ALL MANHOLE DIAMETERS WILL BE 4 FT UNLESS INDICATED OTHERWISE. MANHOLES WITH PIPE SIZES LARGER THAN 24" SHALL BE 5 FT DIAMETER.

THE FLOORS OF ALL MANHOLES SHALL BE SHAPED TO INCREASE HYDRAULIC EFFICIENCY USING 8 SACK SAND MIX CONCRETE.

\*CAST IN PLACE CIRCULAR CONCRETE MANHOLES ARE TO BE CONSTRUCTED ONLY ON SEWERS NOT SUBJECT TO DETRIORATION OF CONCRETE DUE TO FORMATION OF HYDROGEN SULFIDE GAS AND IN LOCATIONS WHERE IT IS OBVIOUS THAT ANY ADJUSTMENT OF THE MANHOLE TOP ELEVATION WHICH MAY BE NECESSARY WILL NOT REQUIRE MODIFICATION OF THE CONCRETE BARREL.



NOTE: OPENING FOR INLET PIPE CUT IN MANHOLE WALL AND PIPE GROUTED IN PLACE WITH NON-SHRINKING GROUT. EXTERIOR OF COMPLETED CONNECTION TO BE SEALED WITH APPROVED COATING.

