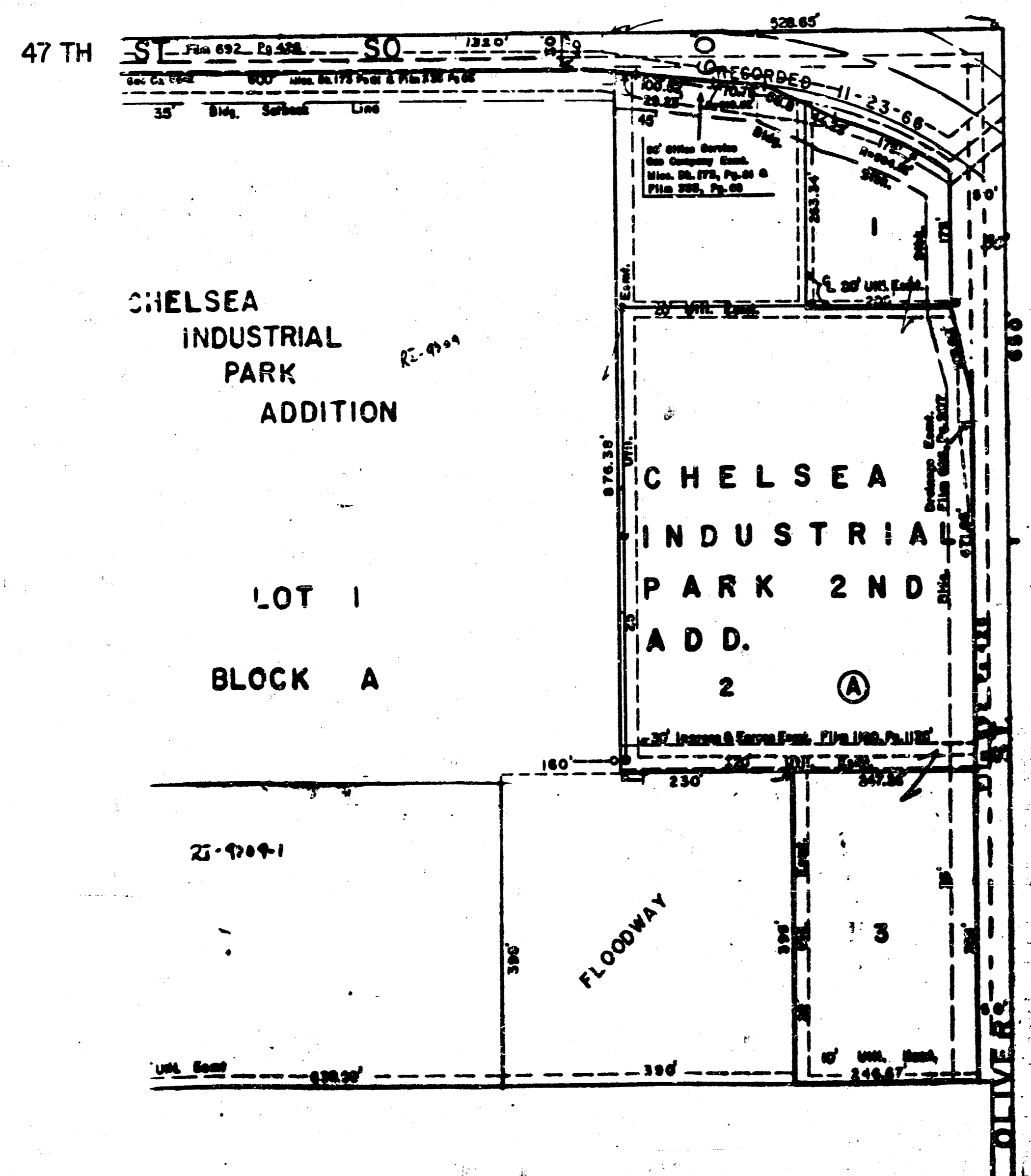


PLANS
FOR
SANITARY SEWER SYSTEM
CHELSEA INDUSTRIAL 2ND
LOTS 1 & 2, BLOCK A

SEDGWICK COUNTY, KANSAS

CITY OF WICHITA PRIVATE PROJECT NO. 468-76-245-80001-000-000-184

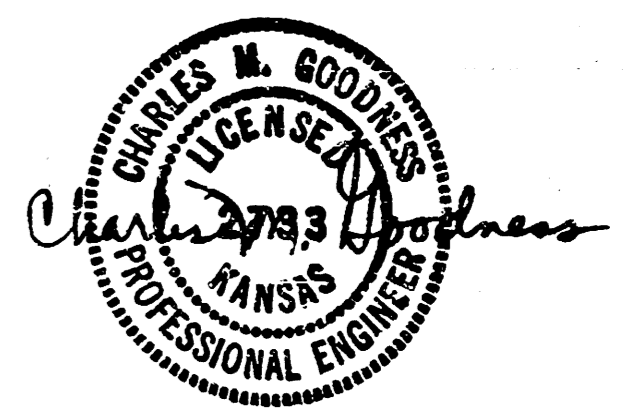
1988



VICINITY MAP

APPROVED AS NOTED
By CITY ENGINEER OF WICHITA
Sanitary Sewers *RB 10/22/88*
Storm Sewers _____
Driveway Approaches _____
Water Mains _____
Paving _____

NOTE TO CONTRACTOR
INSPECTION AND TESTING FOR THIS PROJECT IS TO BE PROVIDED BY A LICENSED CONSULTING ENGINEERING FIRM UNDER CONTRACT WITH THE OWNER/DEVELOPER. SAID INSPECTION SHALL BE IN ACCORDANCE WITH THE CITY OF WICHITA STANDARD CONSTRUCTION SPECIFICATIONS, ARTICLES AND CERTIFIED PLANS. LICENSED CONTRACTORS SHALL BE RESPONSIBLE FOR THE PROPER PERFORMANCE OF ALL WORK. NO WORK SHALL BE PERFORMED OR MATERIALS PLACED ON THE PROJECT UNLESS THE CONTRACTOR HAS BEEN ADVISED BY THE CITY ENGINEER OF THE CITY OF WICHITA THAT SUCH INSPECTION AND TESTING HAS BEEN COMPLETED AND APPROVED. ANY WORK PERFORMED WITHOUT WRITTEN AUTHORIZATION OF THE CITY ENGINEER.

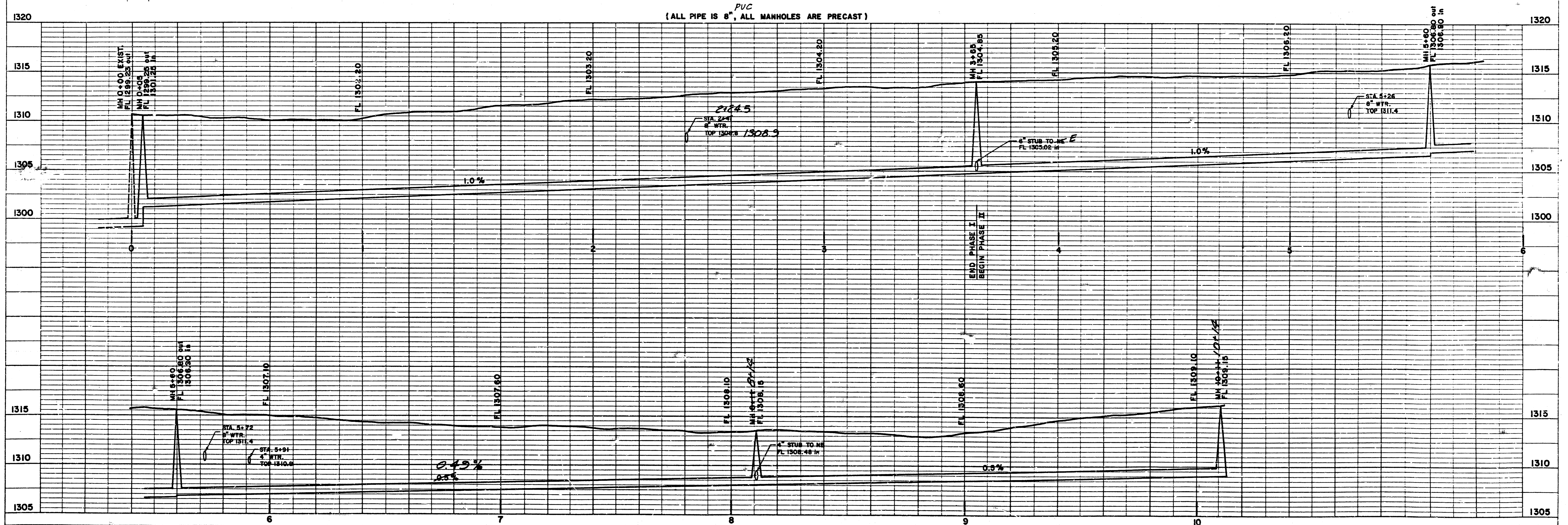
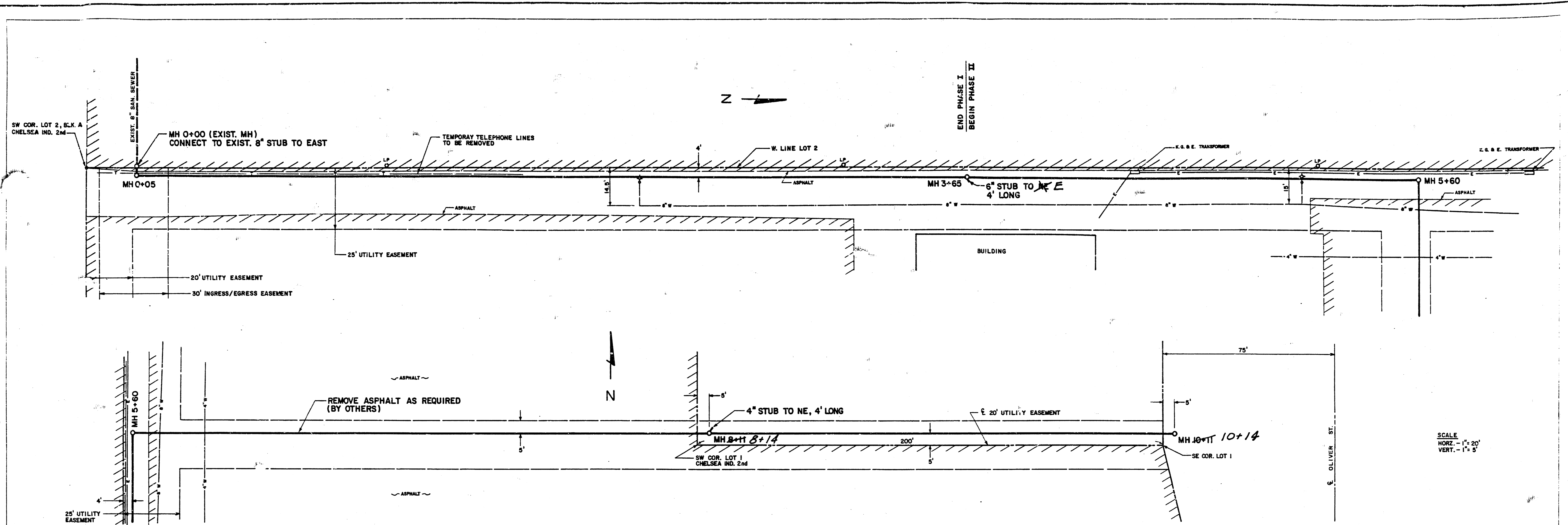


REISS & GOODNESS ENGINEERS
2100 WEST 21ST STREET
WICHITA, KANSAS 67203
(316) 832-0225

"AS CONSTRUCTED"

REVISION	DRAWN BY DEJ	CHECKED BY RP	DESIGNED BY RP	PROJECT	CUSTOMER	SCALE 1/2"	PROJECT NO.
						DATE 10-26-88	SHEET 1 OF 5

FILMED FROM THE BEST AVAILABLE COPY.....



REISS & GOODNESS ENGINEERS
 2100 WEST 21ST STREET
 WICHITA, KANSAS 67203
 (316) 842-0225

REVISION	DRAWN BY DEJ	CHECKED BY RP	DESIGNED BY RP	PROJECT SANITARY SEWER EXTENSIONS	CUSTOMER LOTS 1 & 2, BLK. A, CHELSEA INDUSTRIAL 2nd	SCALE NOTED DATE 10-26-08	PROJECT NO. SHEET 2 OF 5
----------	-----------------	------------------	-------------------	---	---	------------------------------	-----------------------------

FILMED FROM THE BEST AVAILABLE COPY