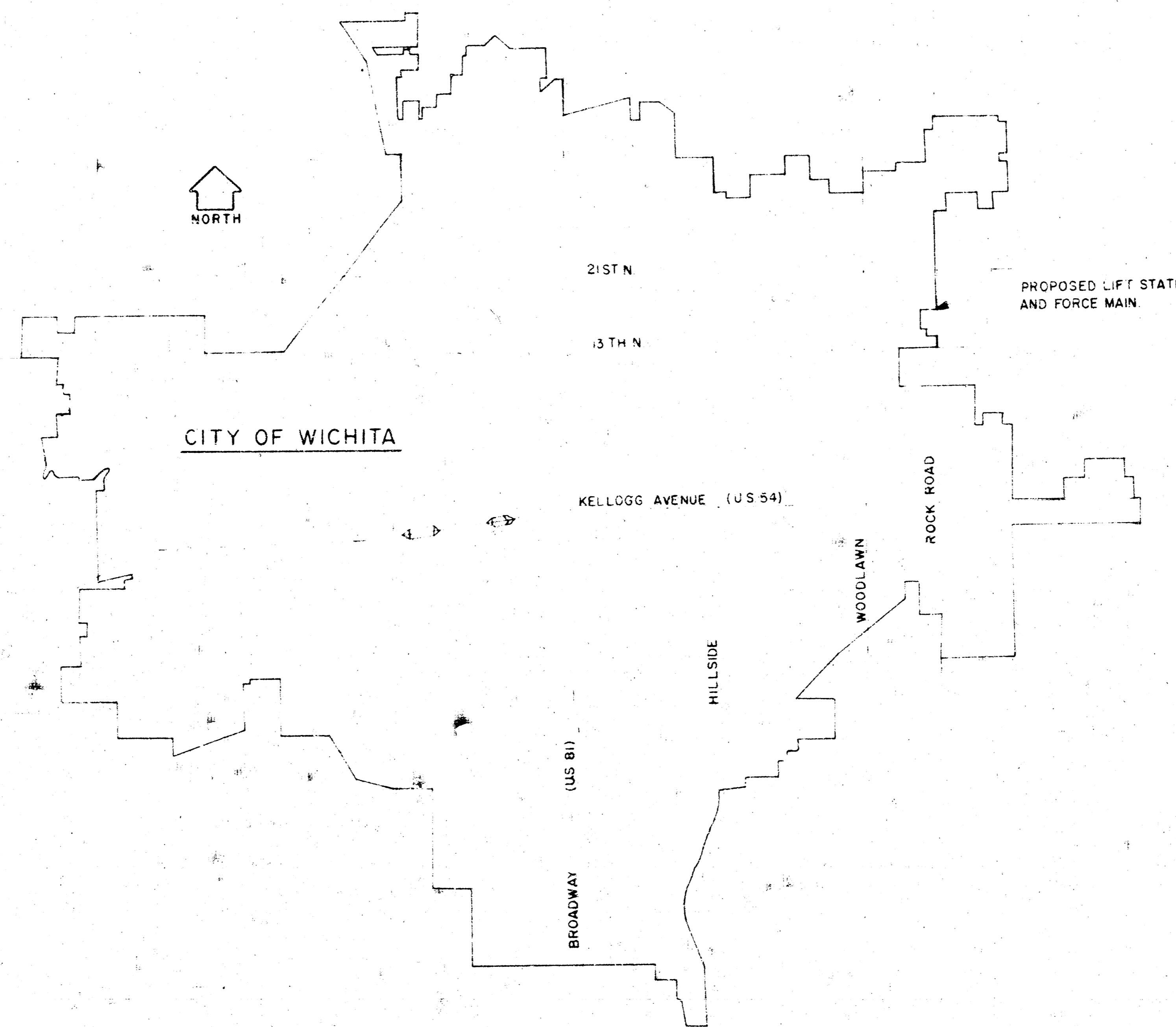


CHELSEA STATION

SANITARY SEWER LIFT STATION AND FORCE MAIN

CITY PROJ. NO. 468-76-245-80538-000-000-008

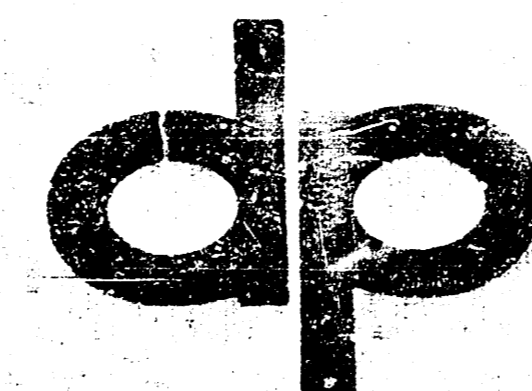


INDEX TO DRAWINGS

1. Title Sheet
2. Force Main and Access Road
3. Lift Station Details
4. Details
5. Electrical & Warning Sign Details

DEVELOPER

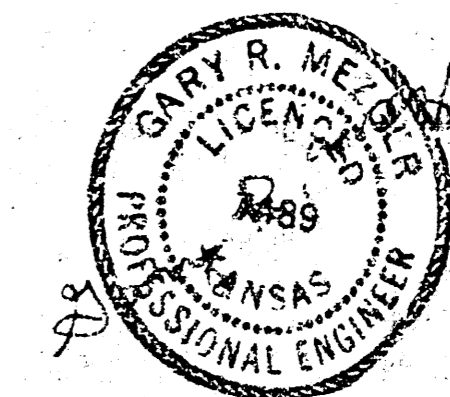
MAX L. COLE & ASSOCIATES

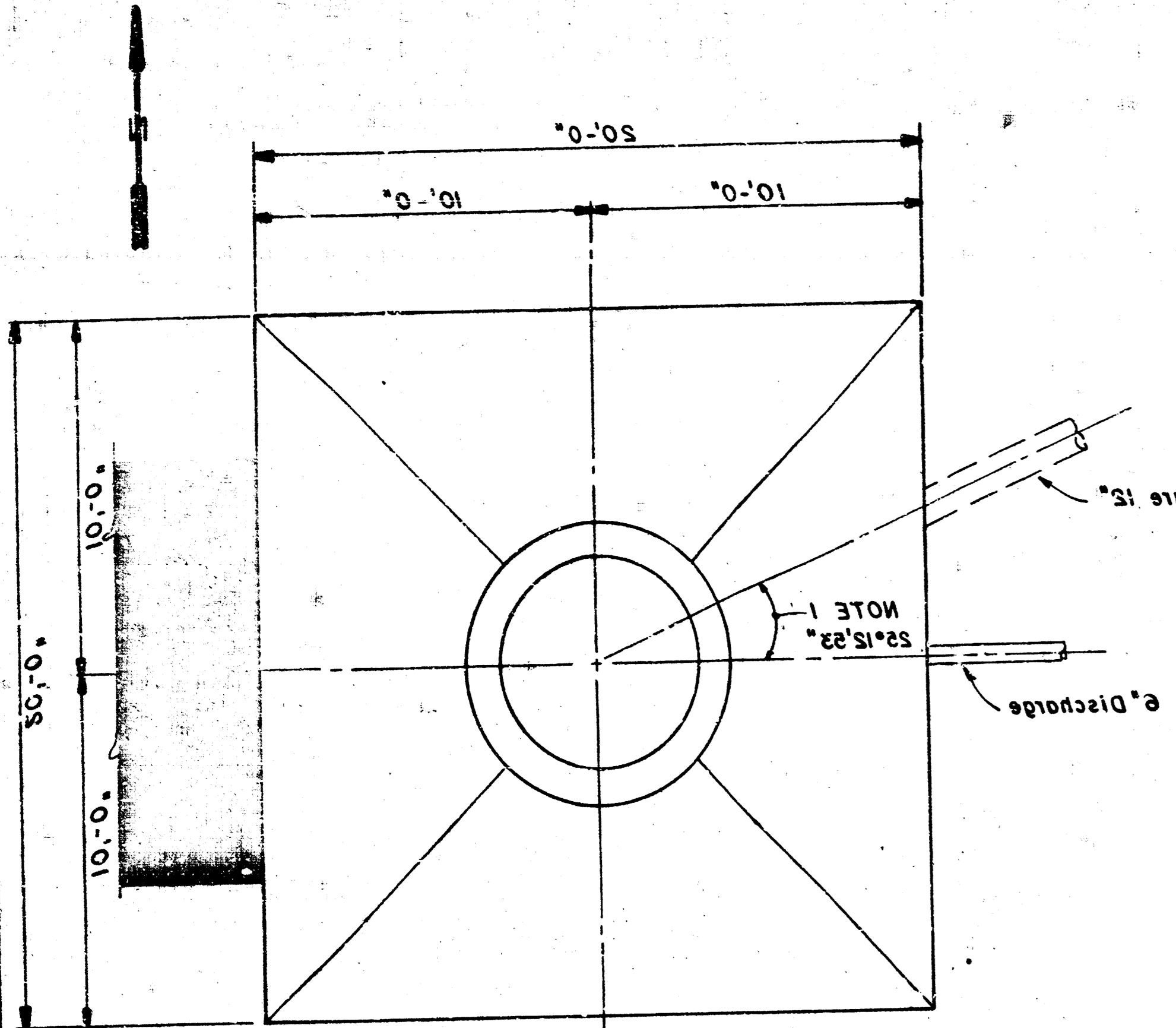


POE & ASSOCIATES OF KANSAS, INC.
CONSULTING ENGINEERS

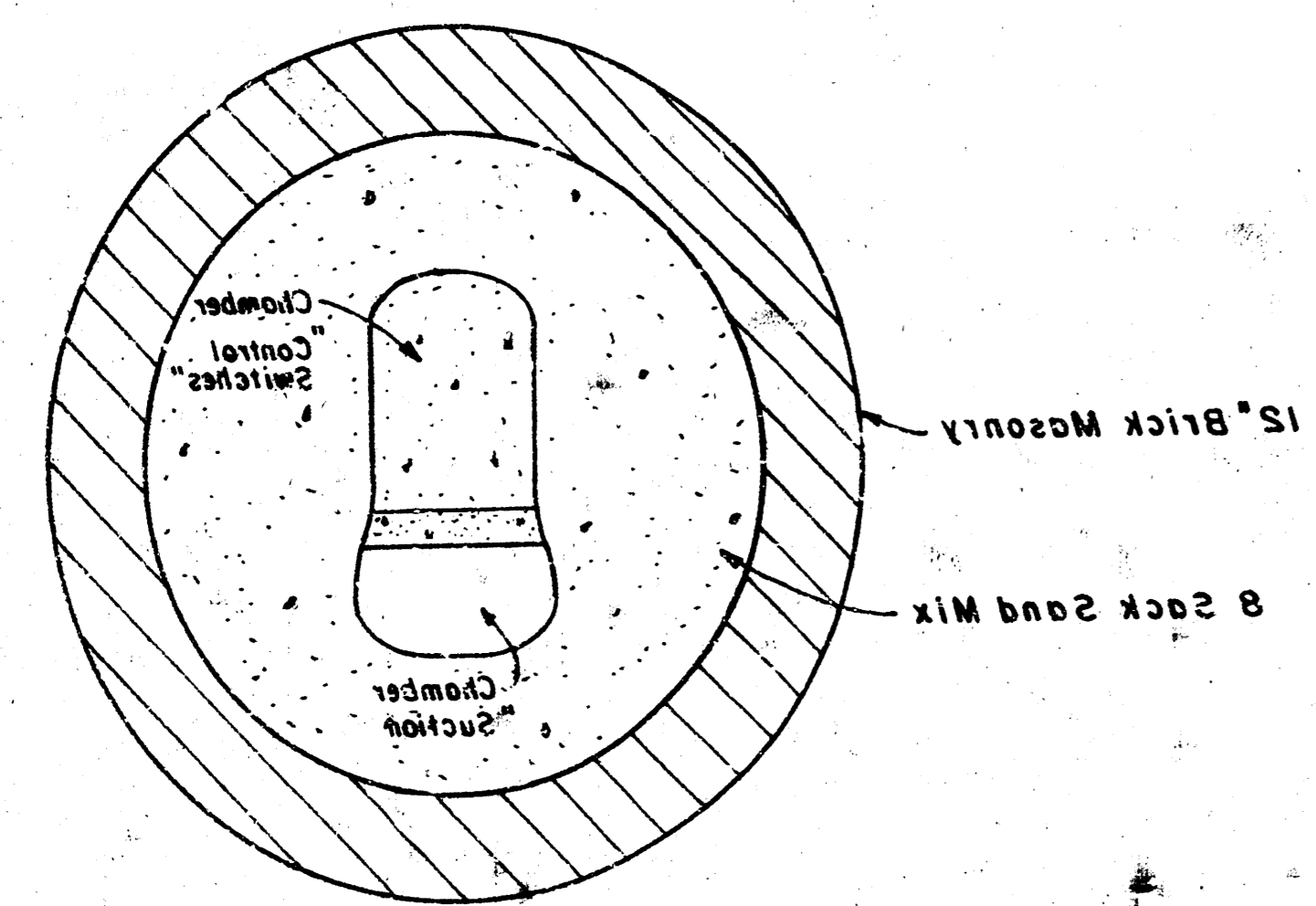
NOTE TO CONTRACTOR
This project will be constructed under the supervision of the CITY ENGINEER and conforming to the SPECIFICATIONS of the CITY OF WICHITA. The CONTRACTOR will reimburse the City of Wichita for all cost of inspection.

10-10-76
APPROVED AS NOTED
By CITY ENGINEER OF WICHITA
Sanitary Sewers *[Signature]*
Storm Sewers _____
Driveway Approaches _____

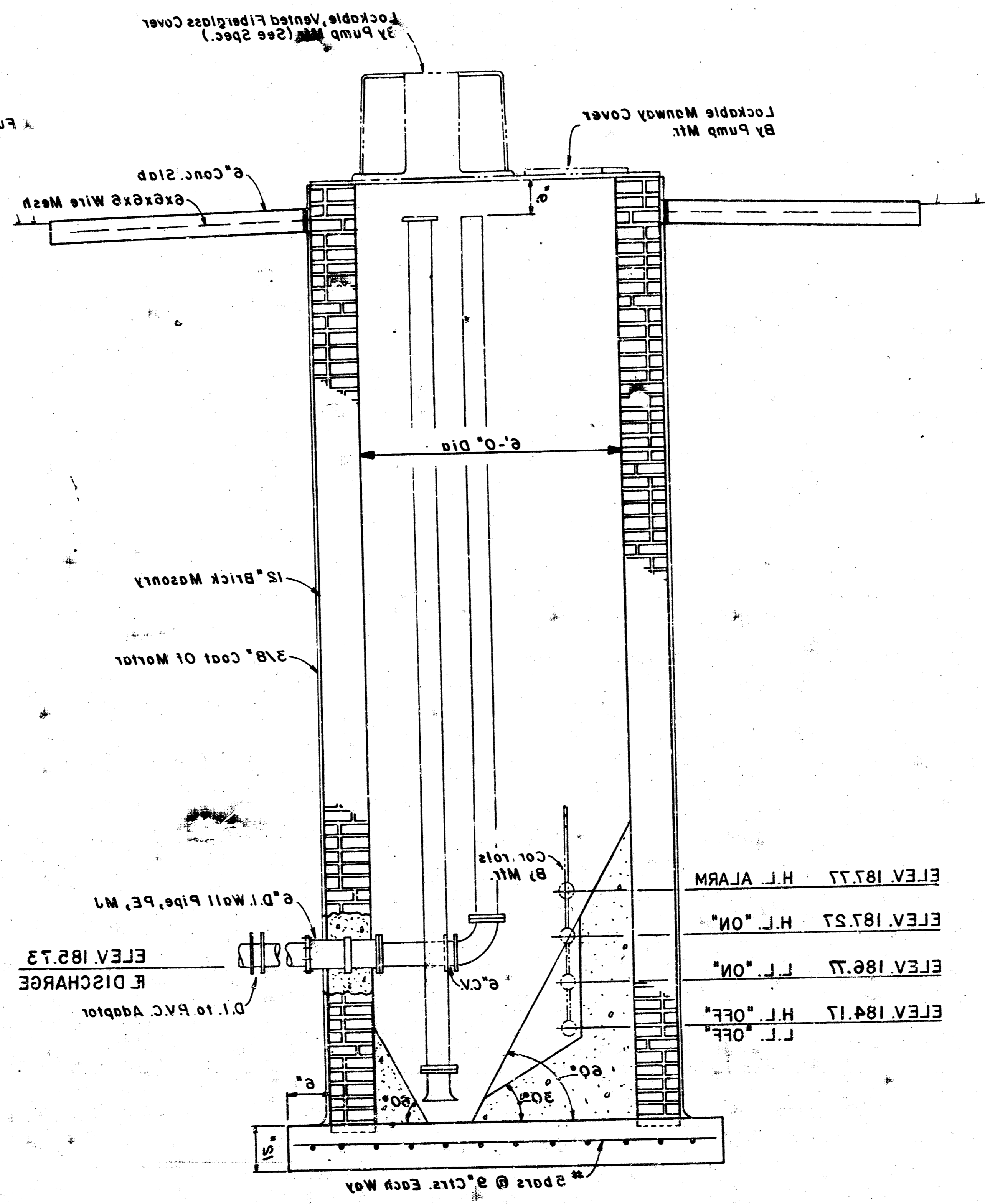




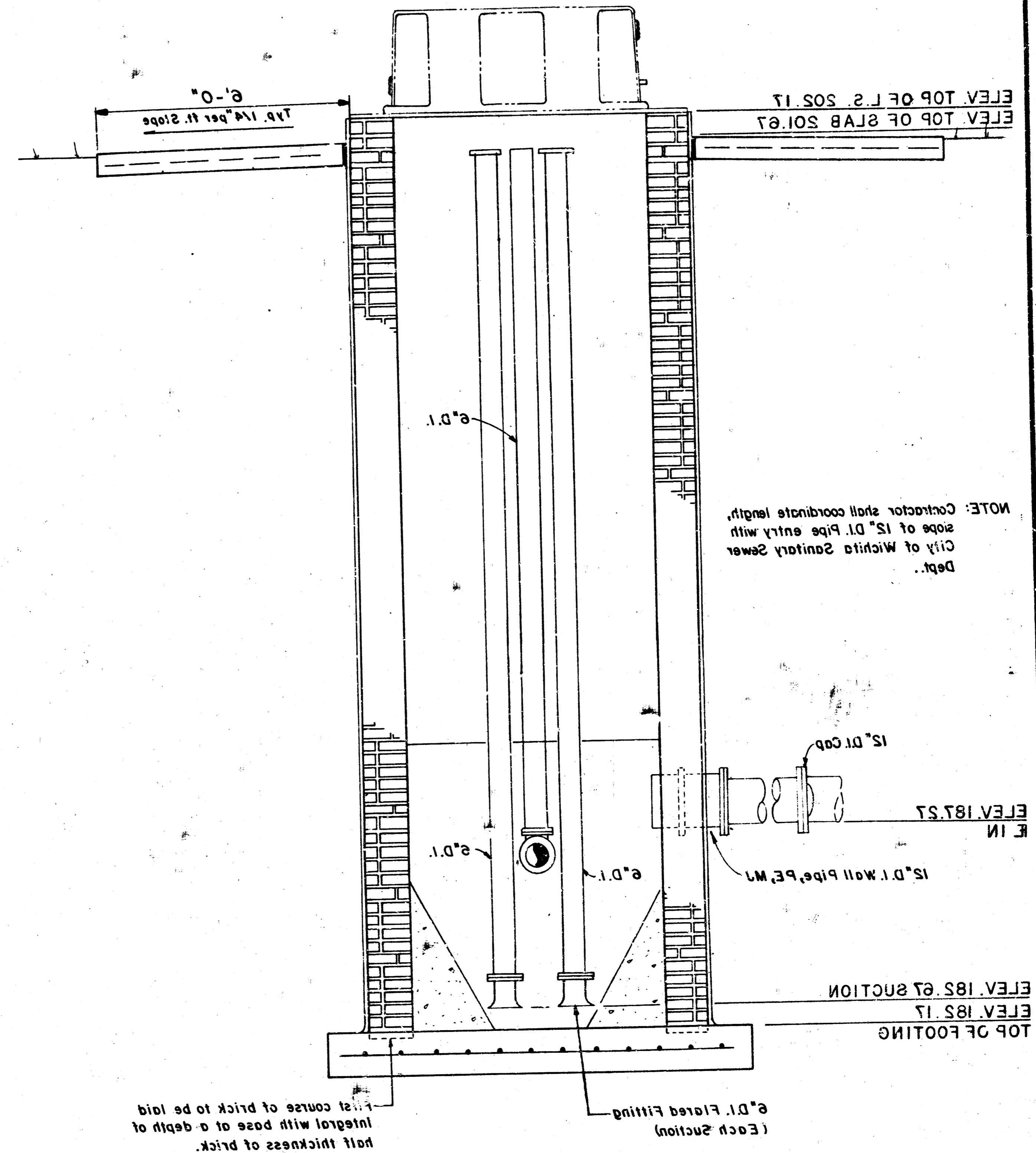
PLAN



INVERT PLAN



SECTION LOOKING SOUTH



SECTION LOOKING EAST

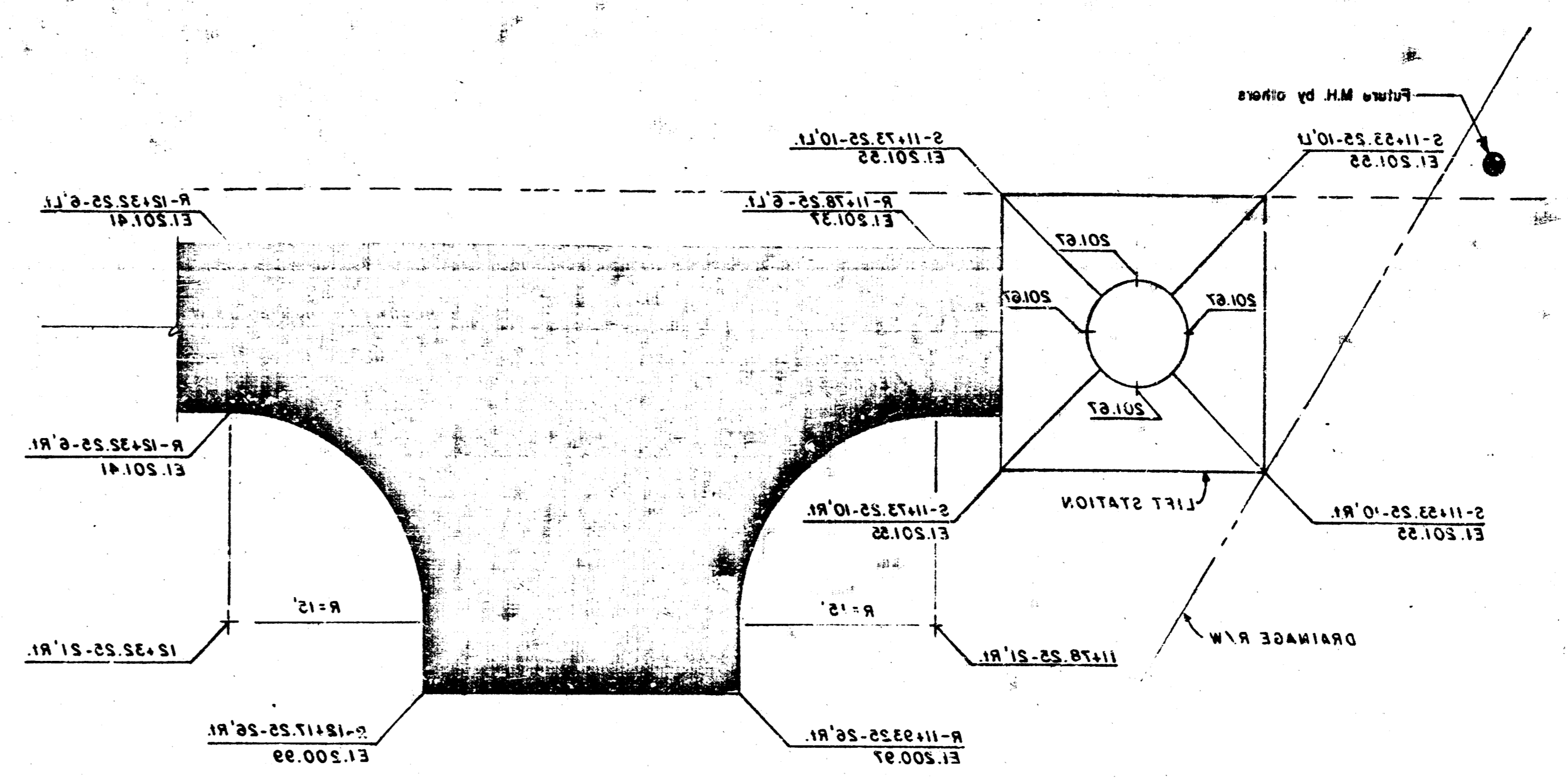
GENERAL NOTES

- Contractor shall coordinate angle of 15" Wall Pipe entry into wall with the City of Wichita Sanitary Sewer Design Dept.
- All piping and fittings shall be Ductile Iron 2'-0" cast iron and shall be installed in accordance with the City of Wichita Sanitary Sewer Design Dept. specifications.
- For pumps and associated equipment SEE SPEC. SHEET 8 & 9.
- Motor used in masonry construction shall contain 8 sacks of cement per cubic yard.
- Footings and slab shall be sack saving mix.

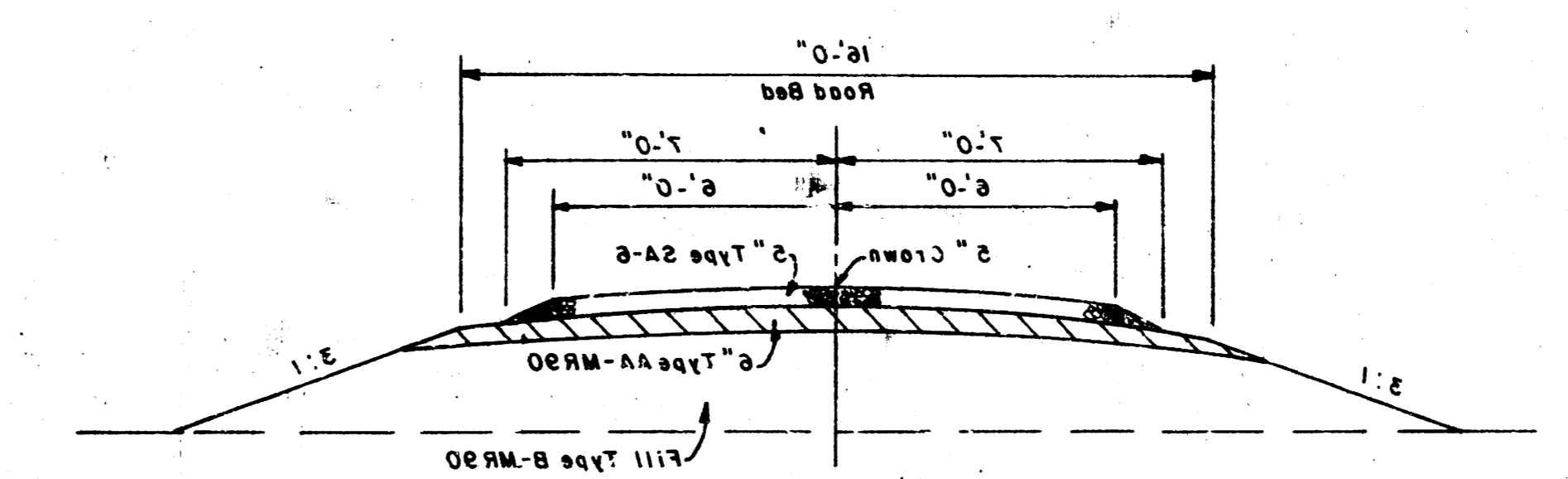
POF & ASSOCIATES, INC. ENGINEER, G.M. EM. TECH. J.M.W. DRAWN BY J.M.W. SEAL, RONE DATE: SEPT. 1988	
LIFT STATION Lift Station & Force Main CHELSEA STATION Sanitary Sewer	

NOTE: Contractor shall coordinate length, slope of 15" D.I. Pipe entry with City of Wichita Sanitary Sewer Dept.

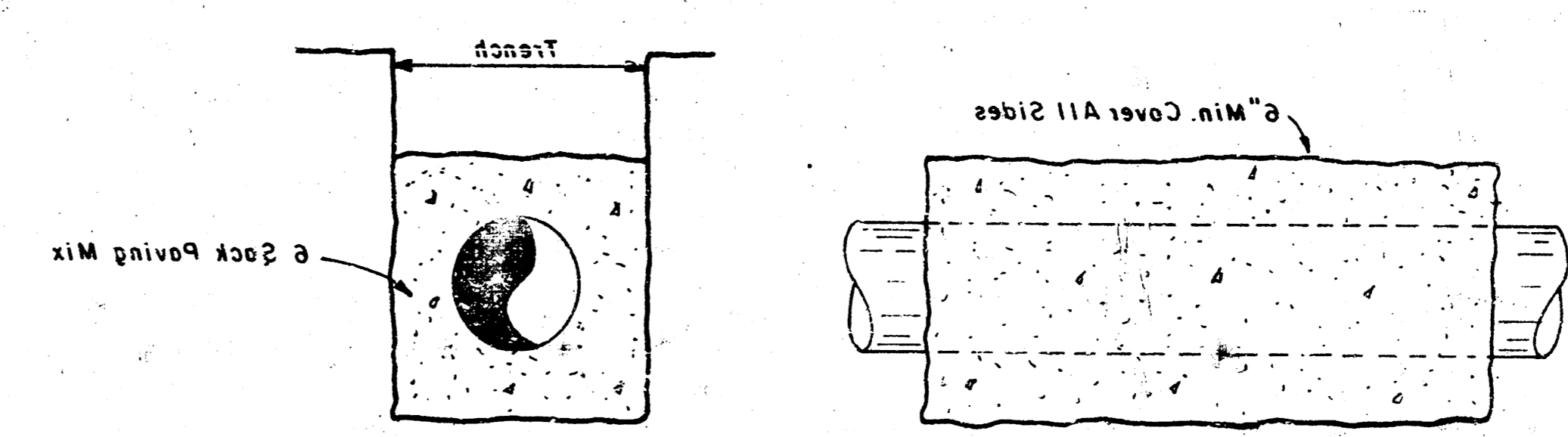
15" D.I. Flared Fitting (Each Section)
 Integral with base to a depth of half thickness of brick.
 1-1/2" course of brick to be laid



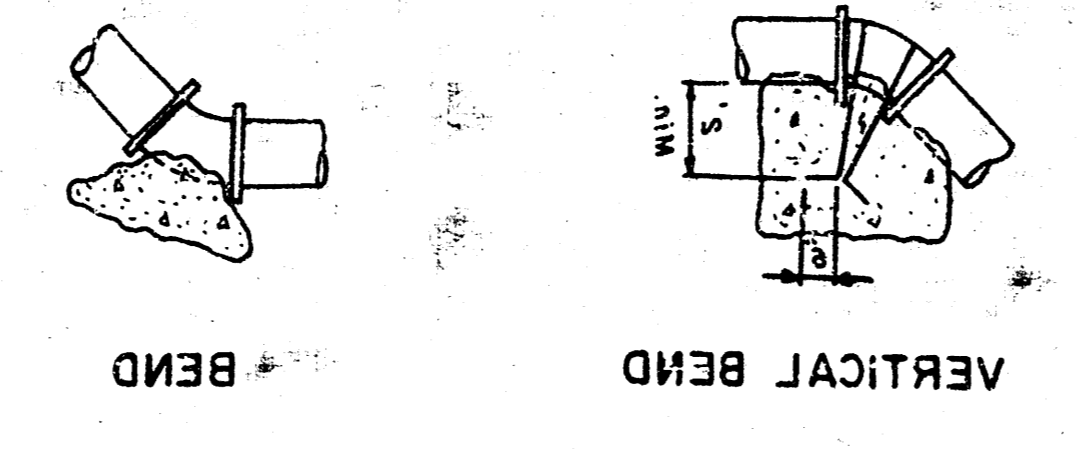
LIFT STATION & PARKING
SPOT ELEVATIONS



TYPICAL ROAD SECTION

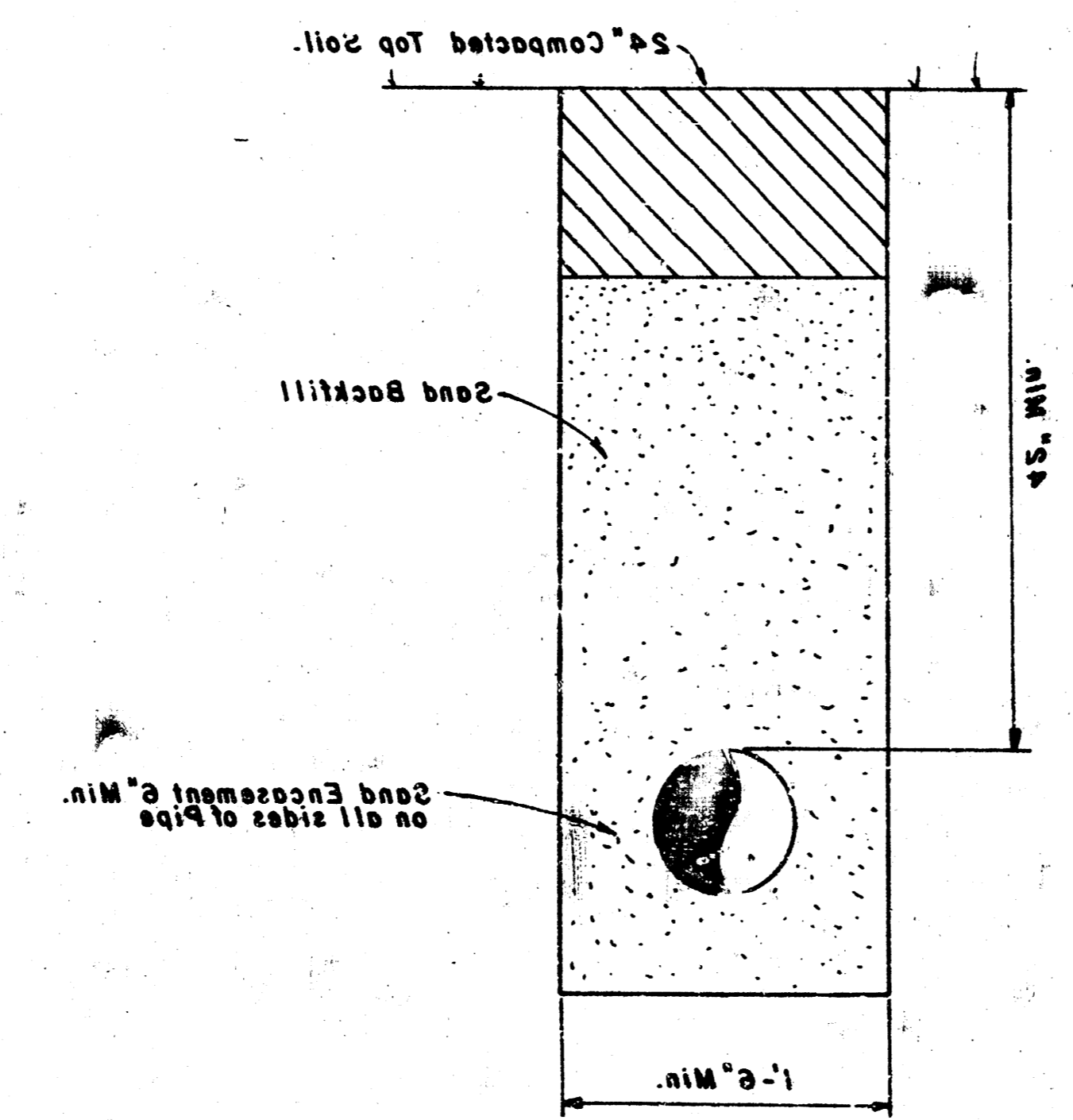


CONCRETE ENCASUREMENT

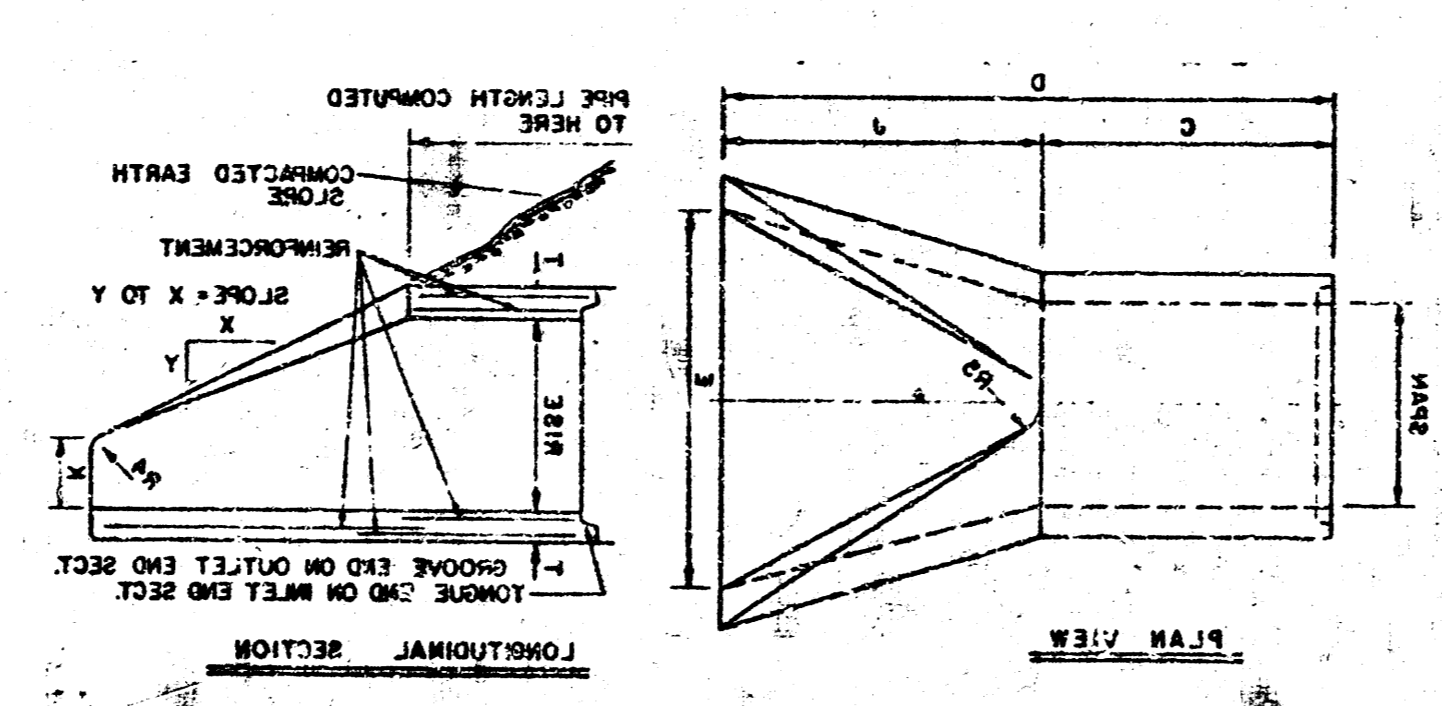


PIPE SIZE	THURST FITTINGS IN TONS - ALSO V IN P
8"	3.95 S 12 1.08
10"	4.50 S 12 1.08
12"	5.10 S 12 1.08

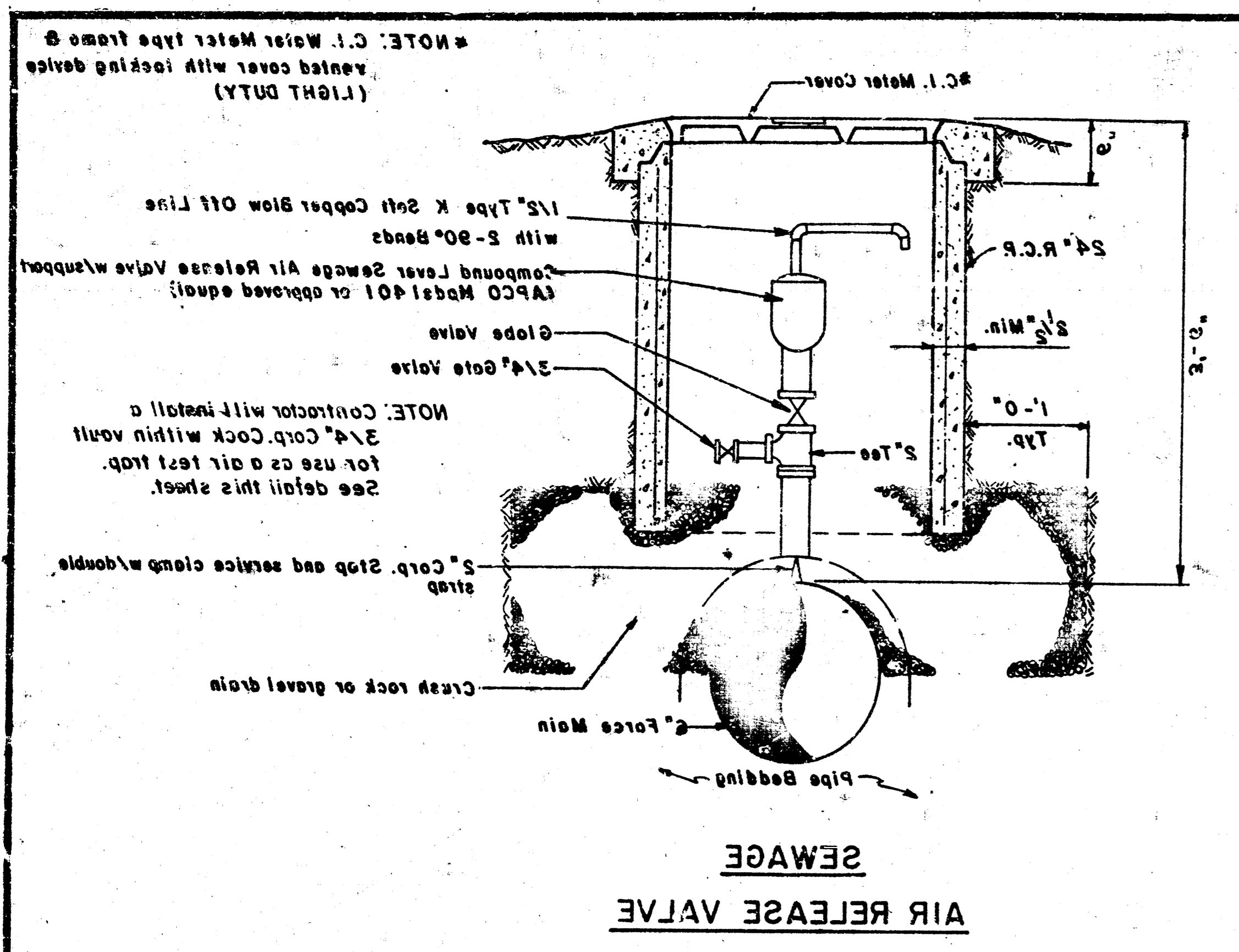
THURST BLOCKS



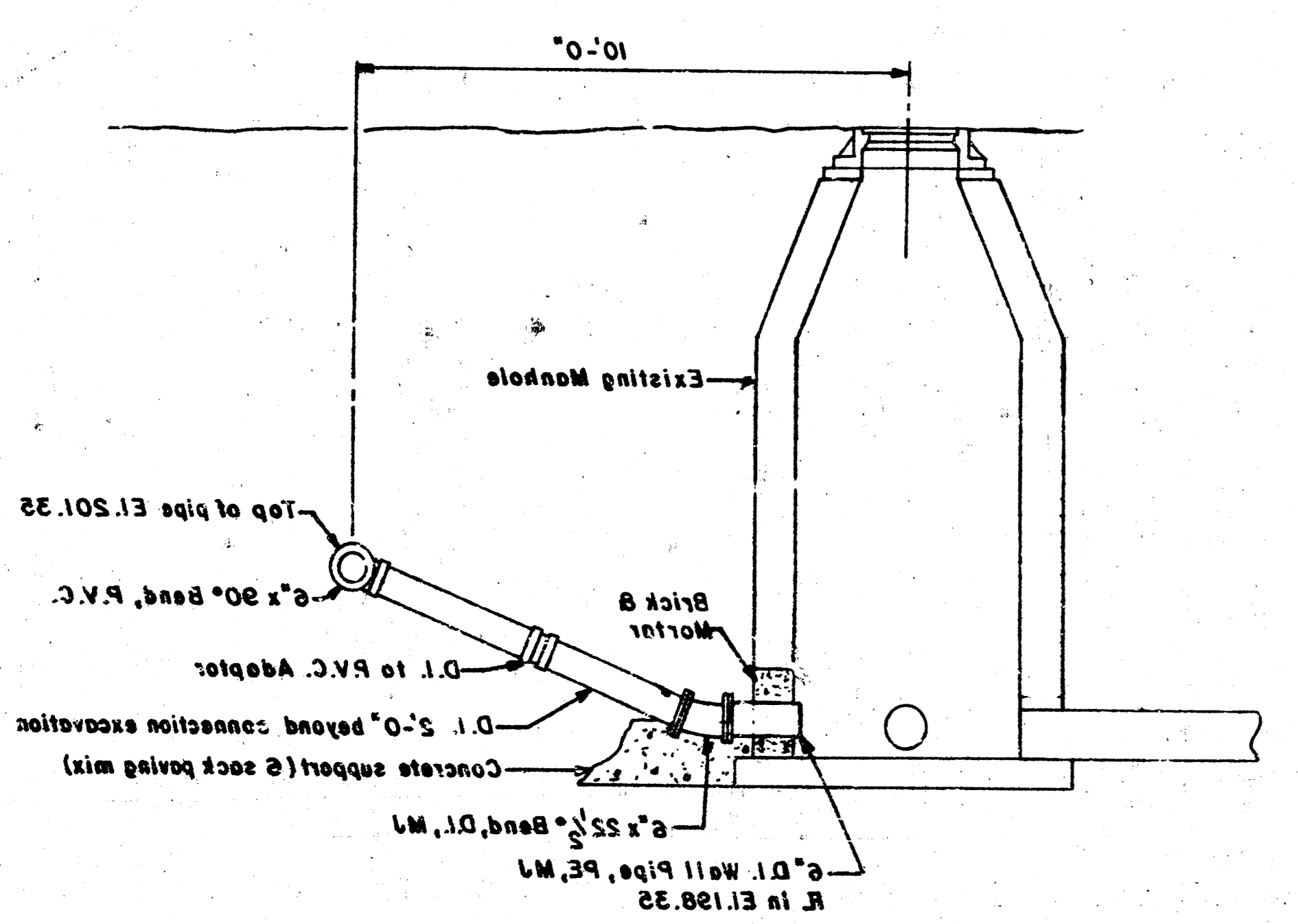
TRENCH DETAIL



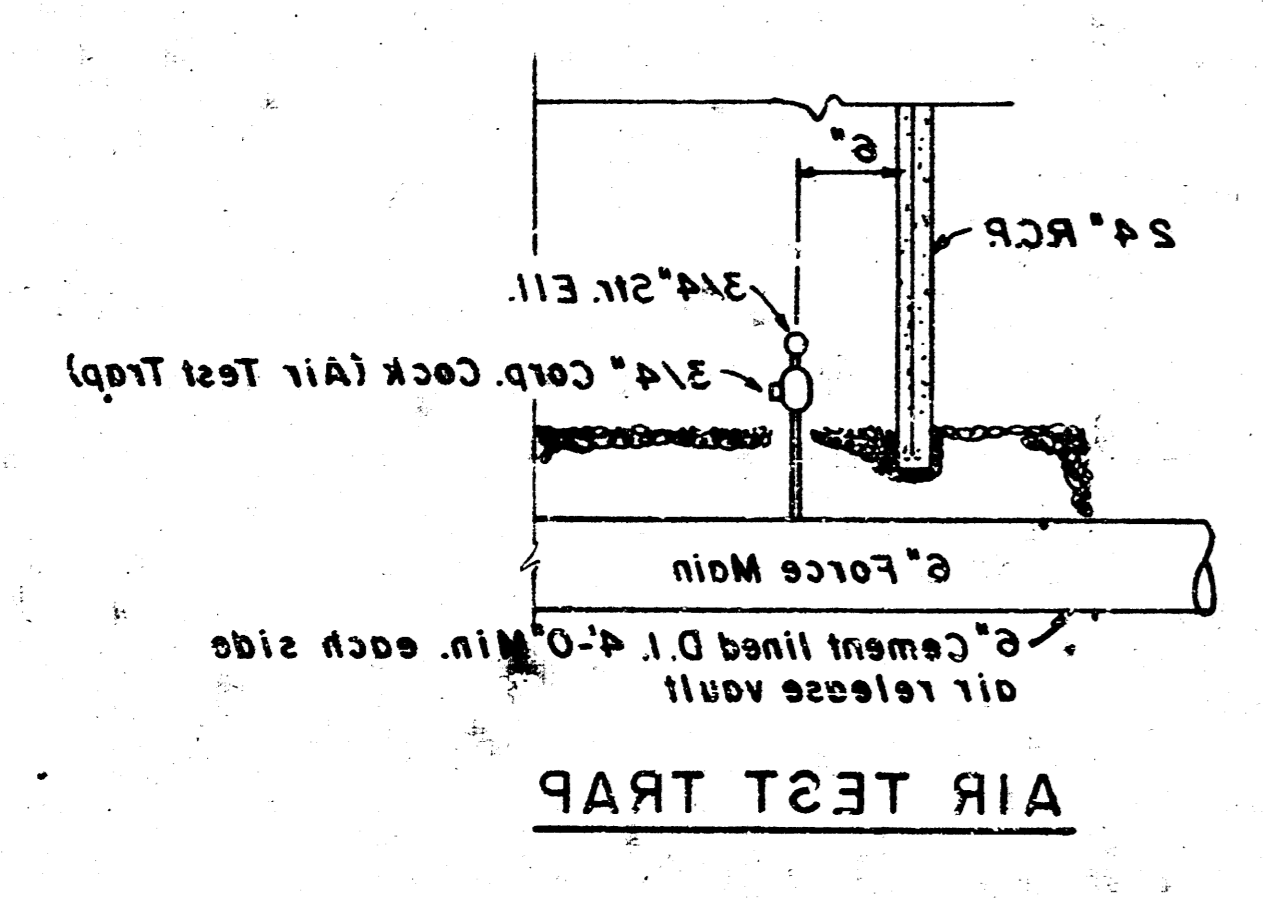
FLARED END SECTION



SEWAGE
AIR RELEASE VALVE



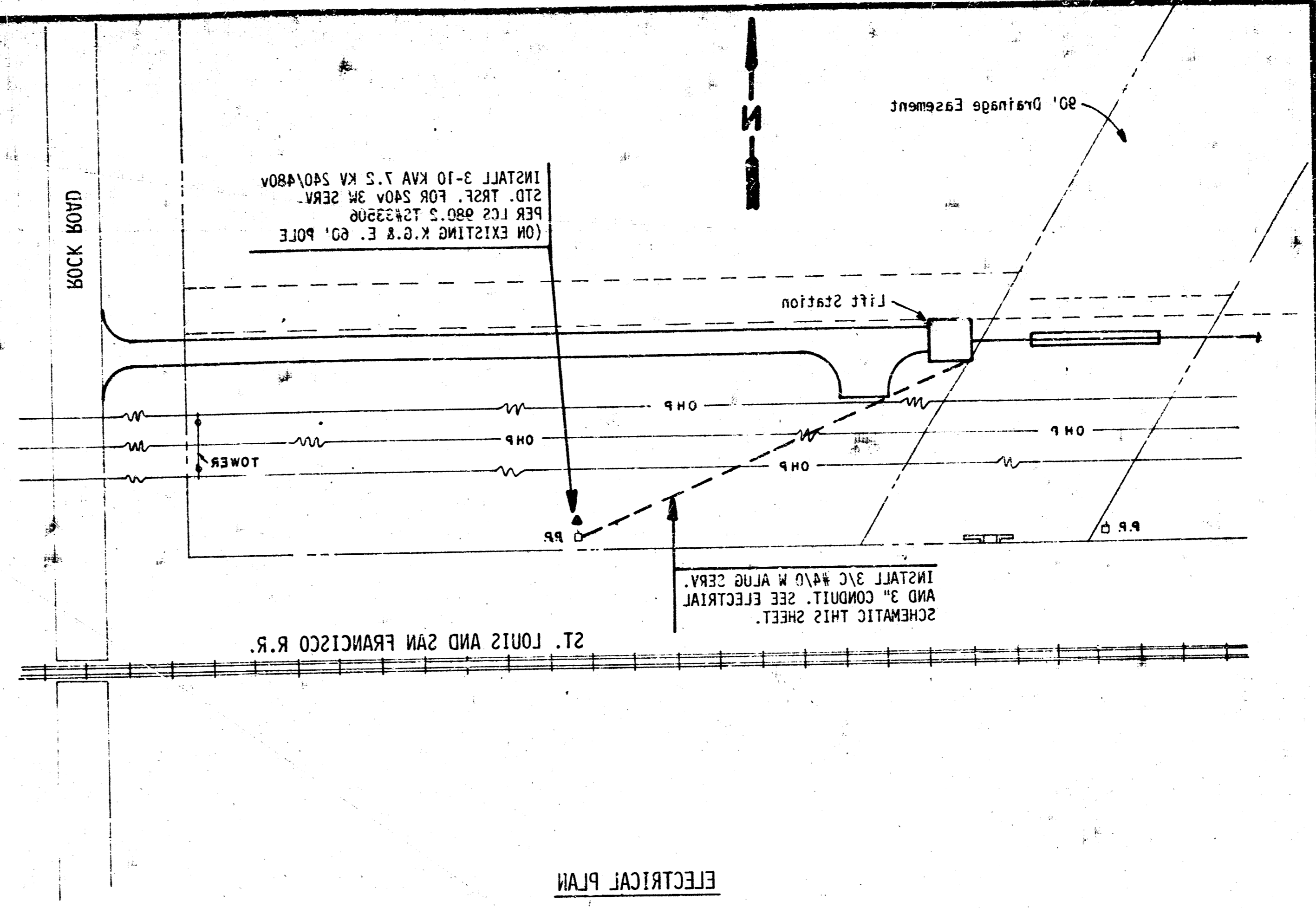
FORCE MAIN CONNECTION



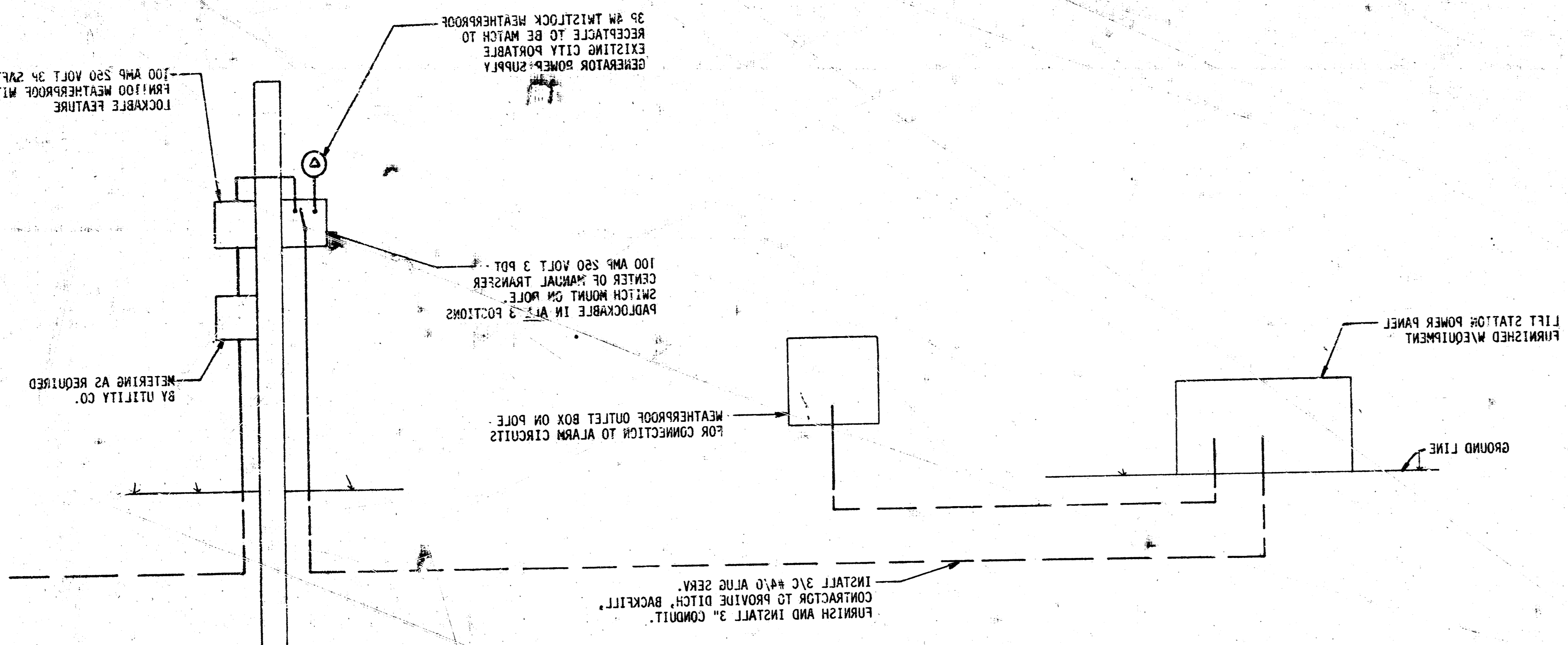
AIR TEST TRAP

P & ASSOCIATES, INC.
 CONSULTING ENGINEERS
 1000 W. 10TH AVE., SUITE 100
 DENVER, CO 80202
 ENGINEER: J.M. BOGARD
 CHECKED: J.M. BOGARD
 DATE: 10/15/84

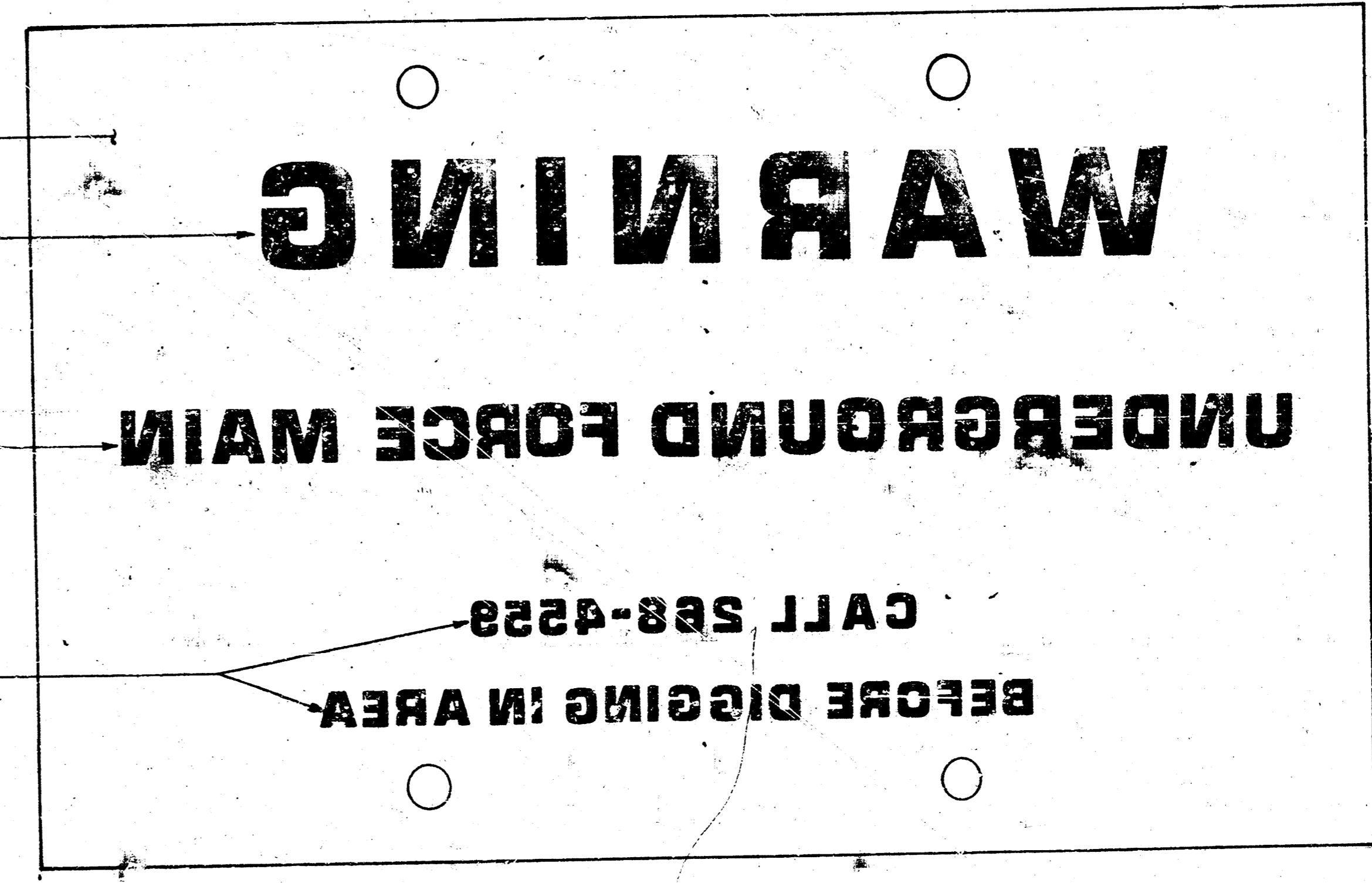




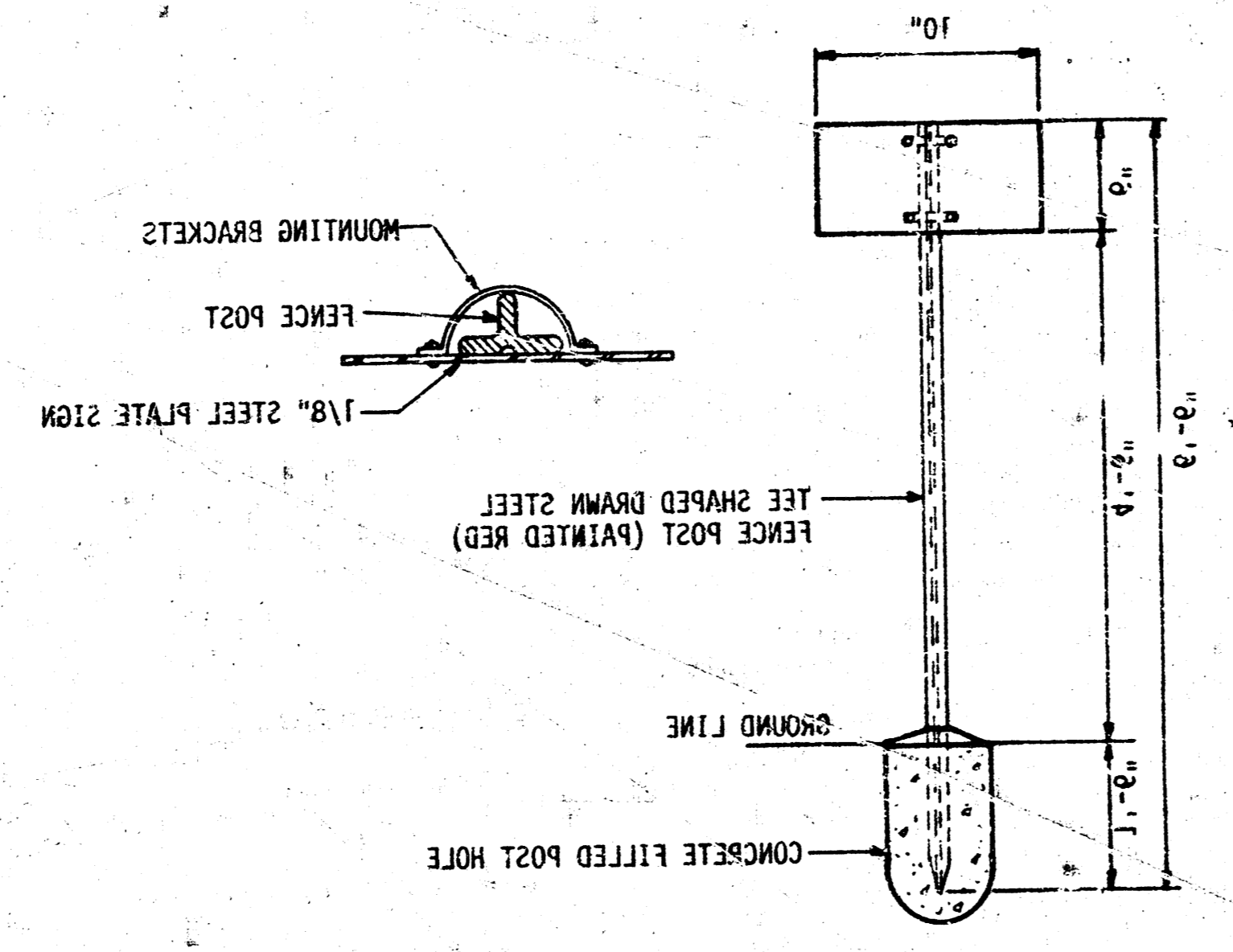
ELECTRICAL PLAN



ELECTRICAL SCHEMATIC



SIGN LETTERING DETAIL



SIGN INSTALLATION DETAIL

NOTE: SIGNS SHALL BE SET AT TIME FORCE MAIN IS INSTALLED AND PLACED SO SIGNS MAY BE READ 90° TO FORCE MAIN ON CENTERLINE. SEE SHEET 5 (STATION) FOR PLACEMENT. ALL MOUNTING DEVICES SHALL BE DR. RUST PROOF METAL.



DATE: SEPT. 1974 SHEET NO. 2

DR. B. L. W. SCALE: 1/4" = 1'-0"

ENGINEER: R. M. MCGEE, P.E.

DESIGNER: J. W. HARRIS

SIGN DETAILS

LIFT STATION & FORCE MAIN

ELECTRICAL

CHelsea STATION

Sanitary Sewer