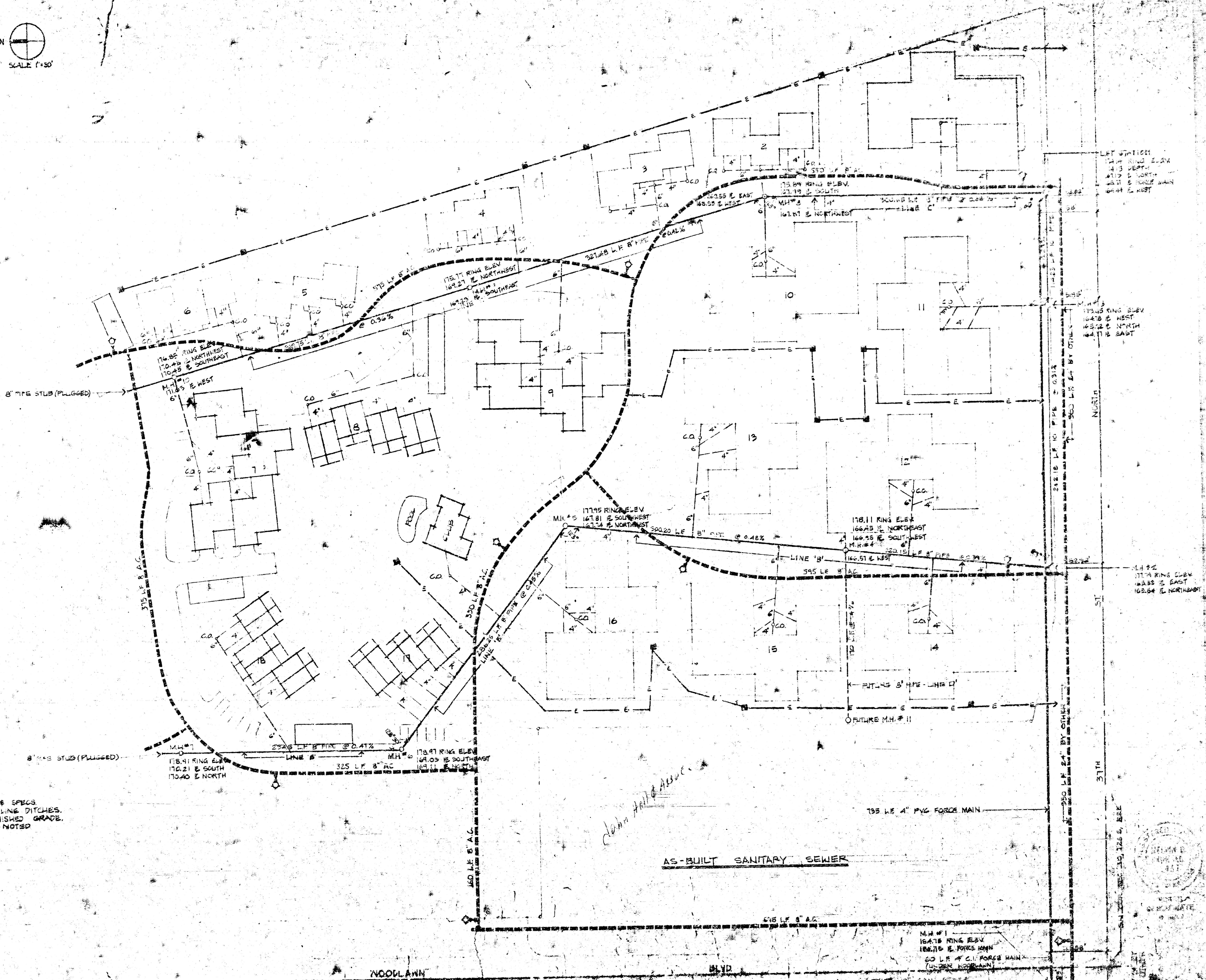


- LEGEND**
- POWER POLE
 - EXIST SAN SEWER
 - PROPOSED SAN SEWER W/ M.H.
 - CLEAN OUT
 - PROPOSED WATER
 - PROPOSED WATER VALVE
 - PROPOSED FIRE HYDRANT W/ VALVE
 - UNDERGROUND ELEC. SERV.
 - TRANSFORMER

- NOTES**
1. ALL M.H.'S TO BE CONST. AS PER CITY STDS. & SPECS.
 2. SAND FILL & FLUSH SAN. SEWER & WATER LINE DITCHES.
 3. TOP OF M.H. TO BE ESTABLISHED BY FINISHED GRADE.
 4. ALL M.H.'S TYPE A' STD UNLESS OTHERWISE NOTED.



John Hall Assoc.

