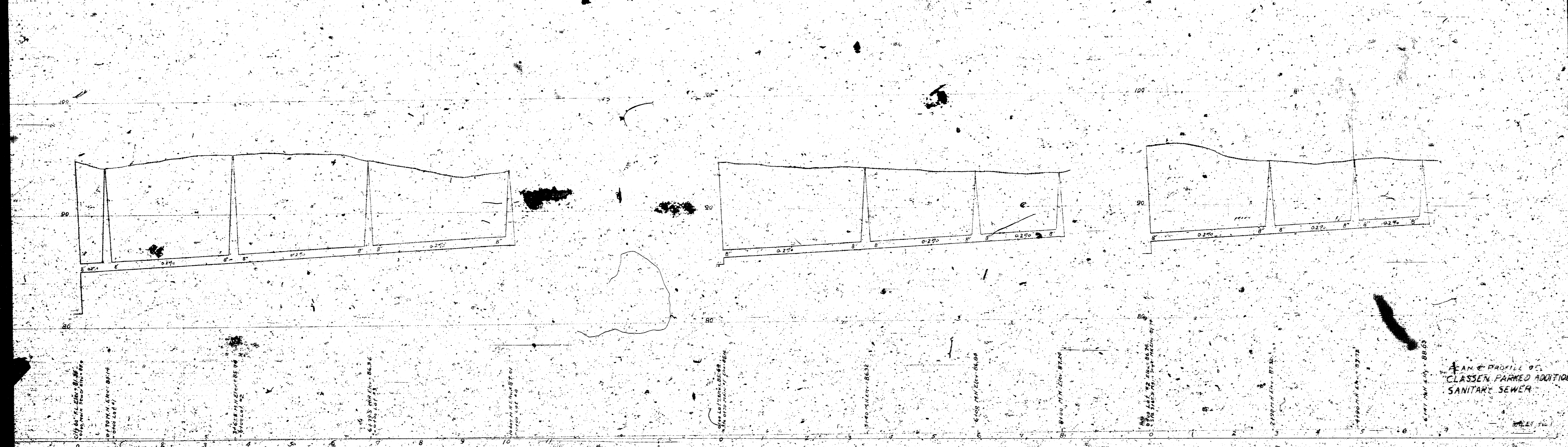
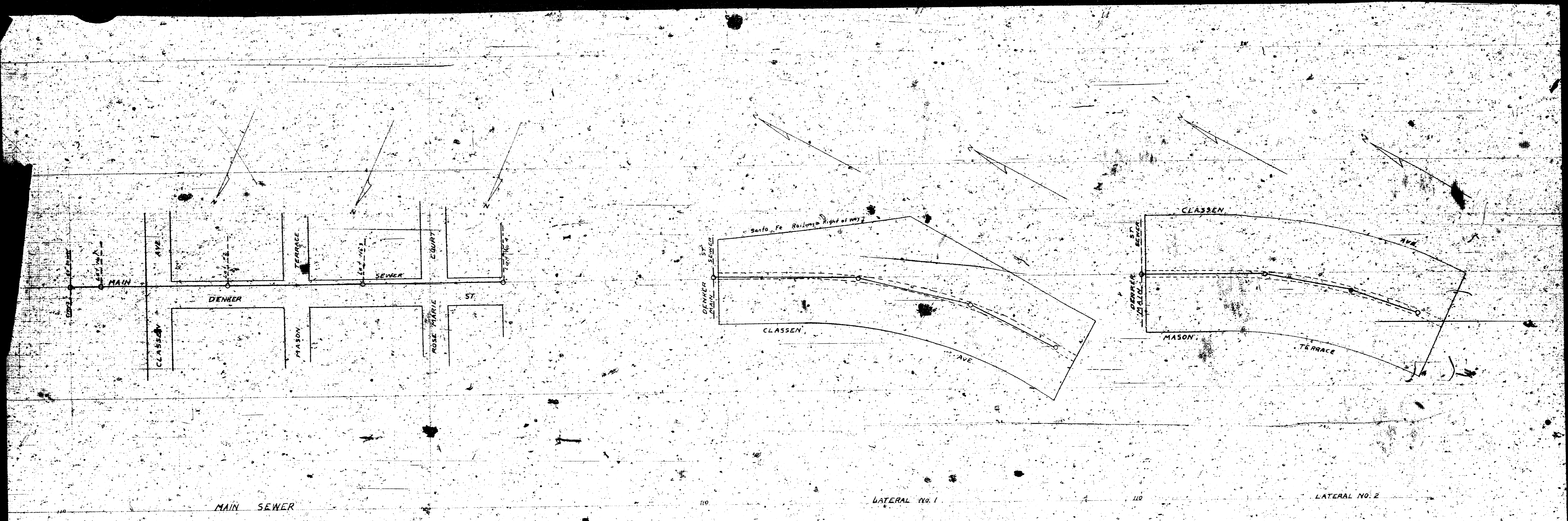
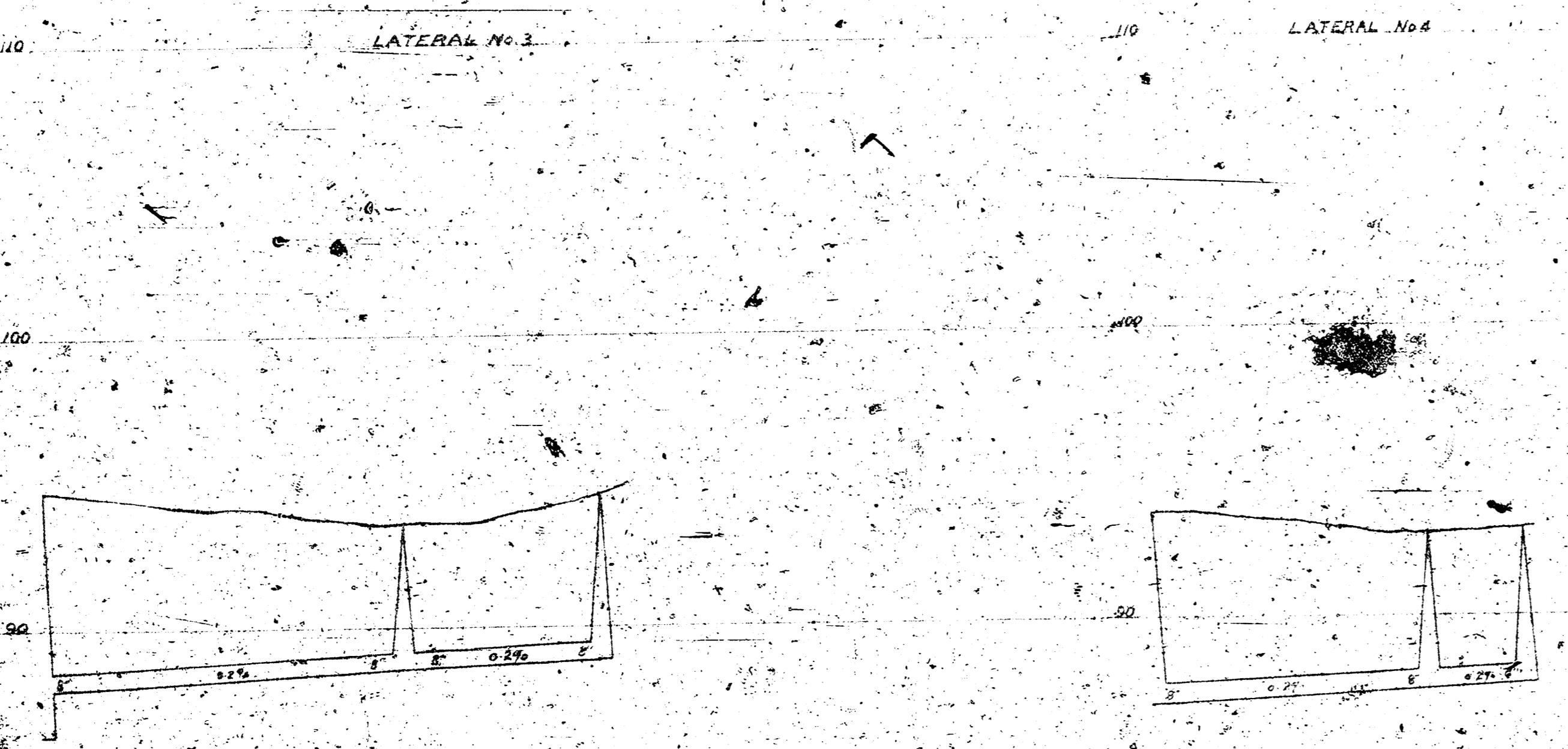
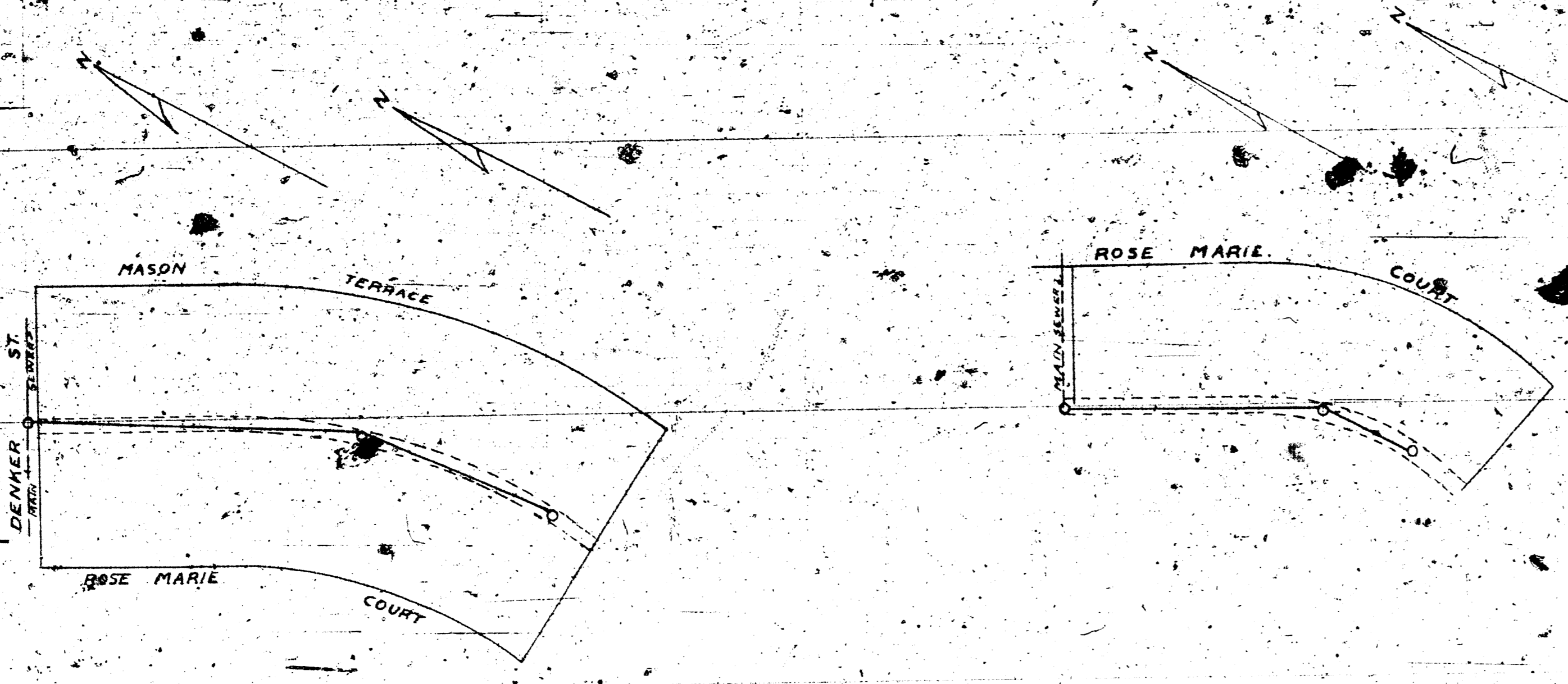


MAP
OF
PROPOSED SANITARY SEWER LOCATION
FOR
CLASSEN PARKED ADDITION

F. E. DEVLIN CONSULTANT
WICHITA KANSAS
1941

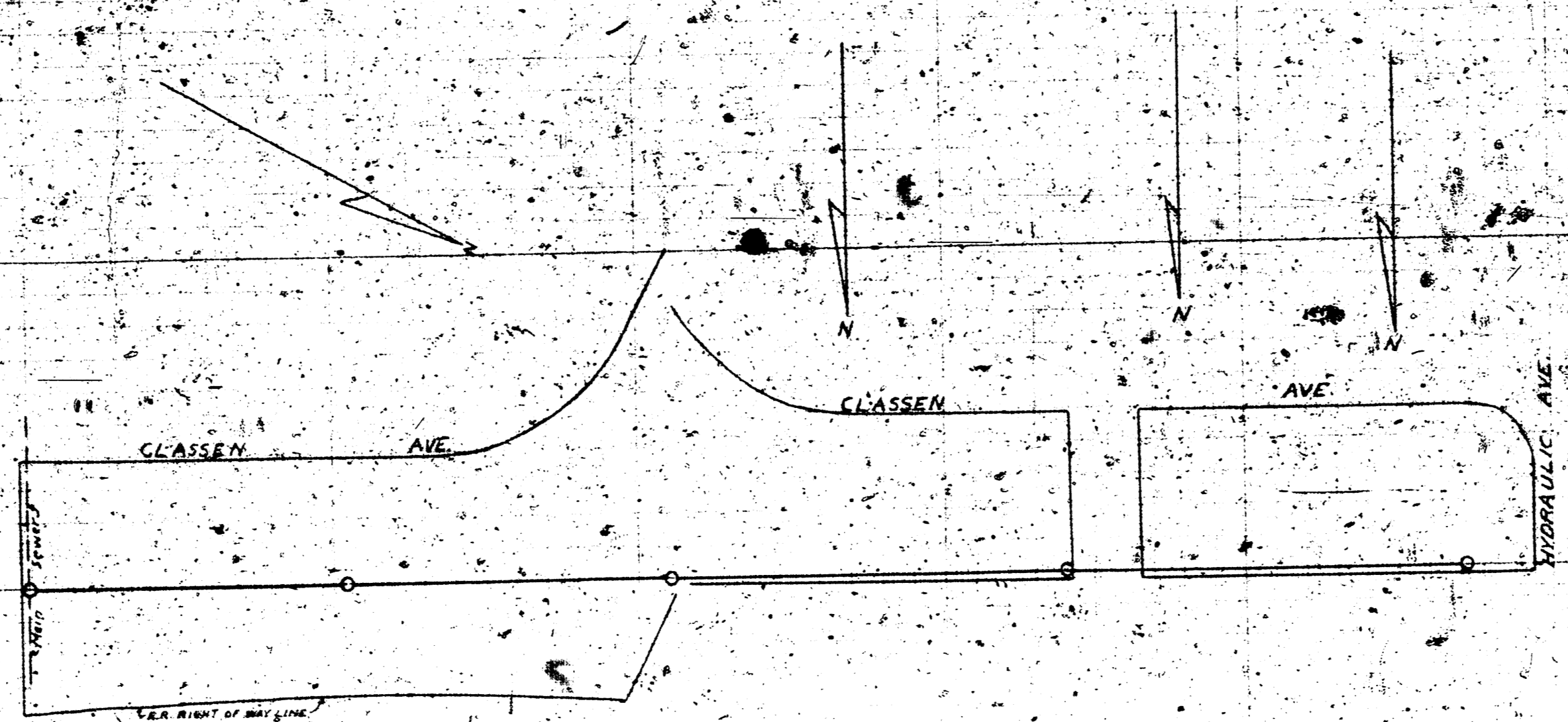
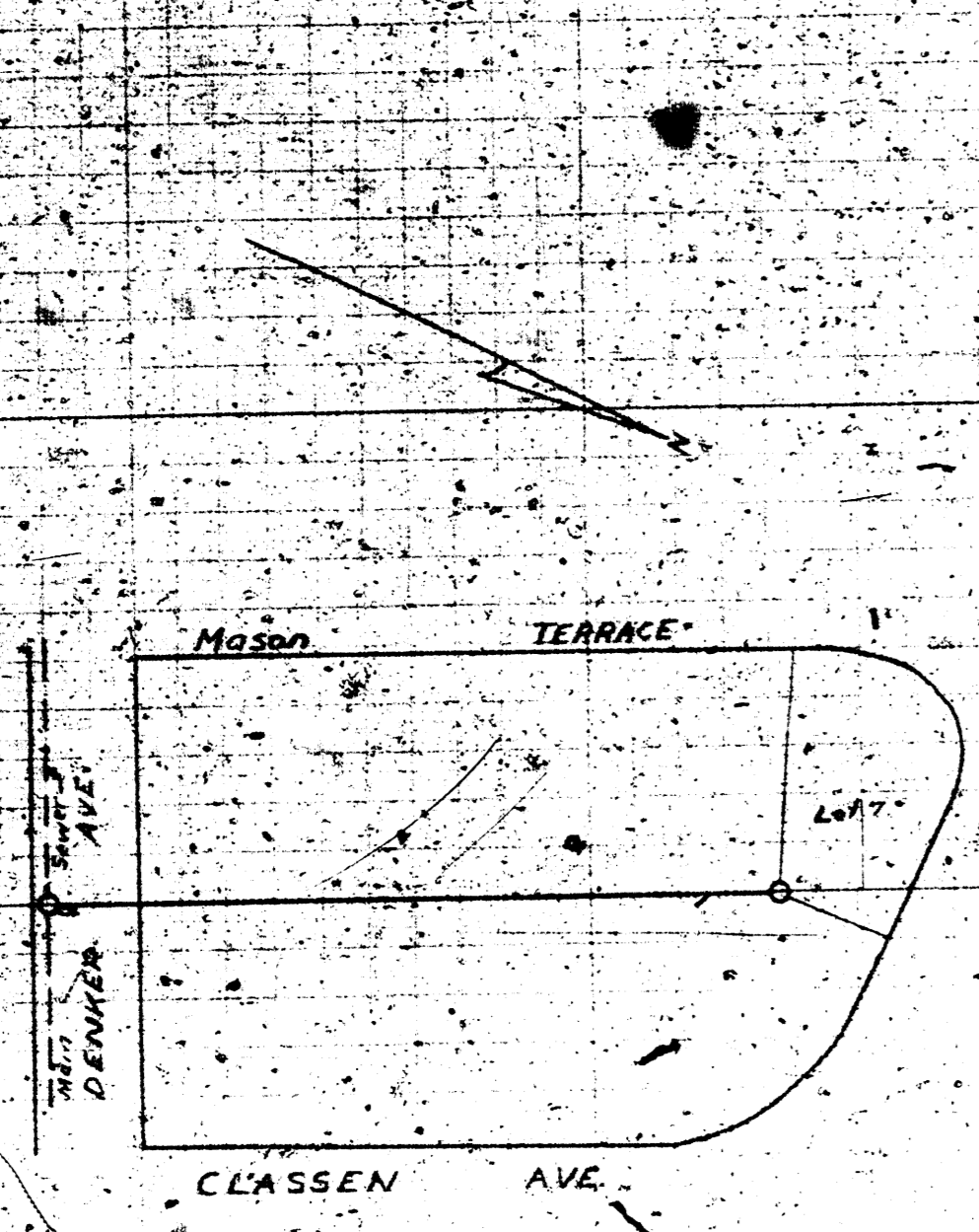


PLAN & PROFILE OF
 CLASSEN PARKED ADDITION
 SANITARY SEWER



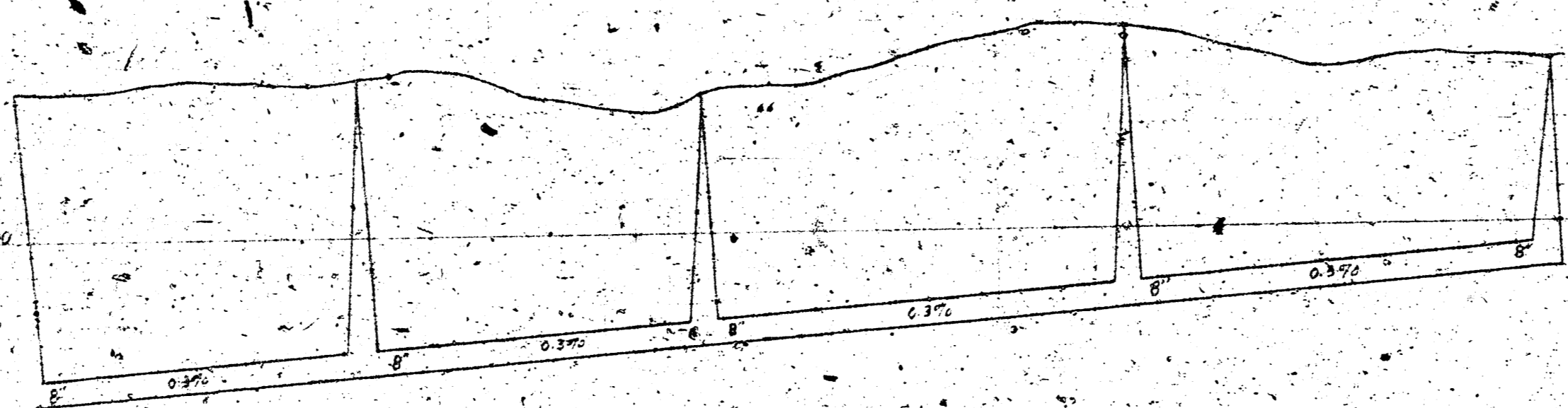
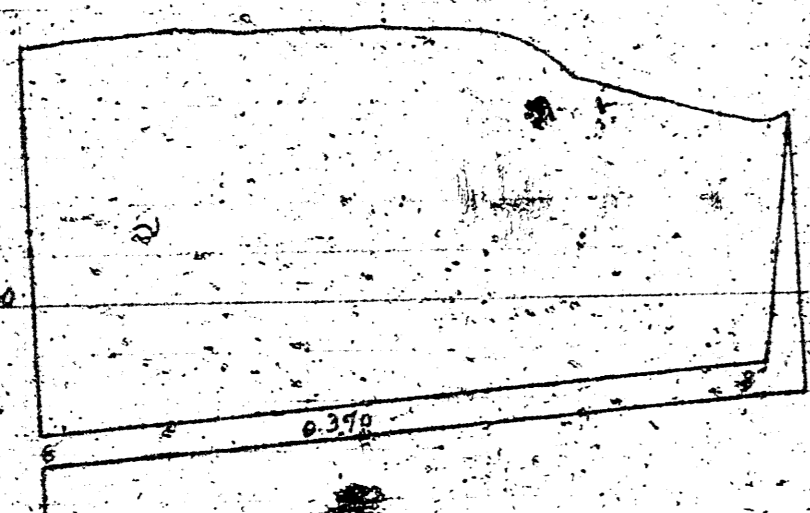
0.0000 PM 8.00' 0.00' 0.00'
 0.0000 PM 8.00' 0.00' 0.00'
 0.0000 PM 8.00' 0.00' 0.00'
 0.0000 PM 8.00' 0.00' 0.00'
 0.0000 PM 8.00' 0.00' 0.00'
 0.0000 PM 8.00' 0.00' 0.00'
 0.0000 PM 8.00' 0.00' 0.00'
 0.0000 PM 8.00' 0.00' 0.00'

PLAN & PROFILE OF
 SANITARY SEWER
 CLASSEN PARKED
 ADDITION
 SHEET No. 2



LATERAL No. 7

LATERAL No. 8



0.000 LAT. NO. 7

0.000 LAT. NO. 8

0.000 LAT. NO. 8

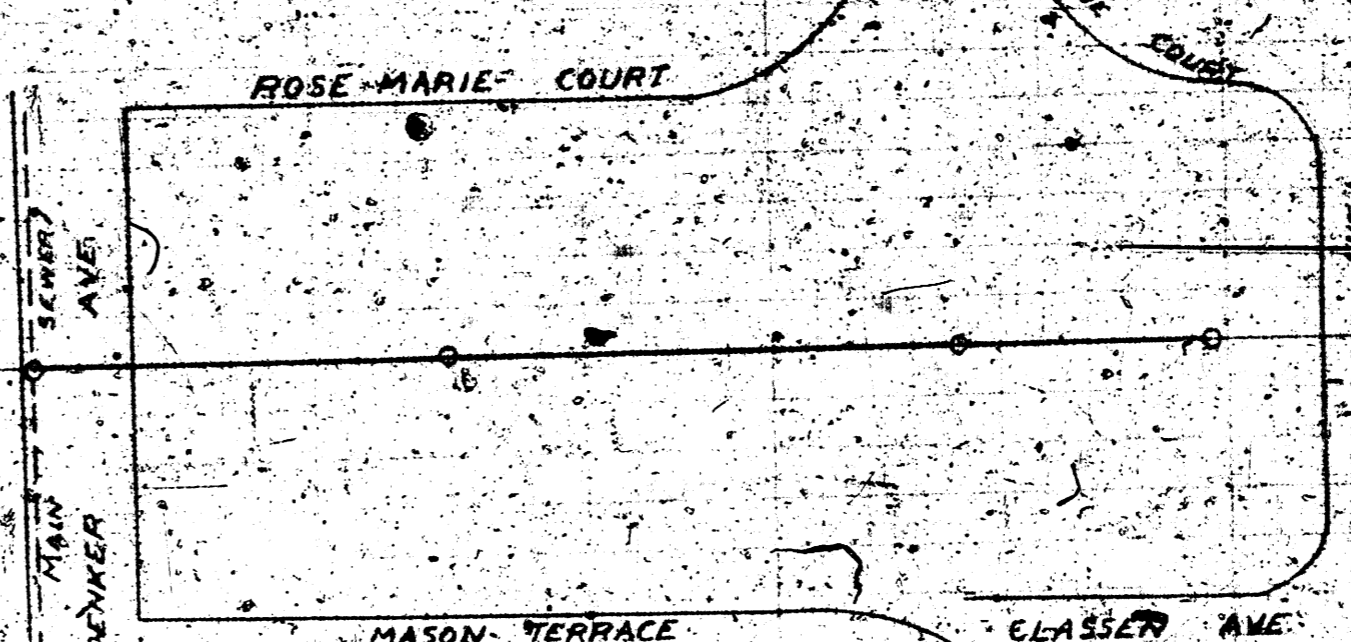
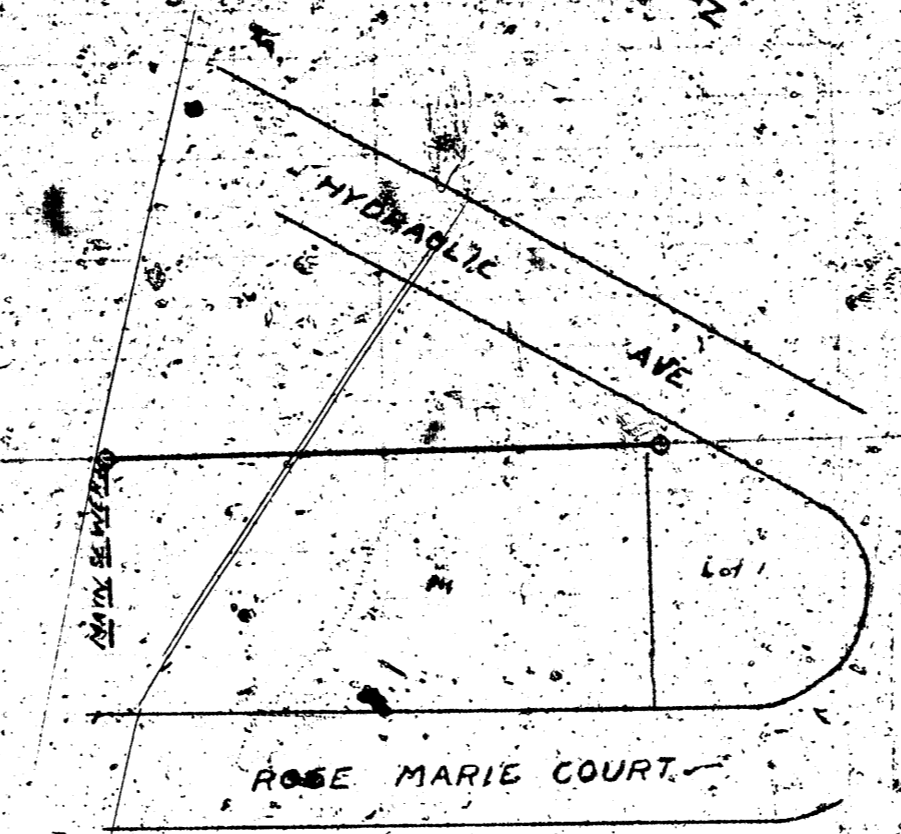
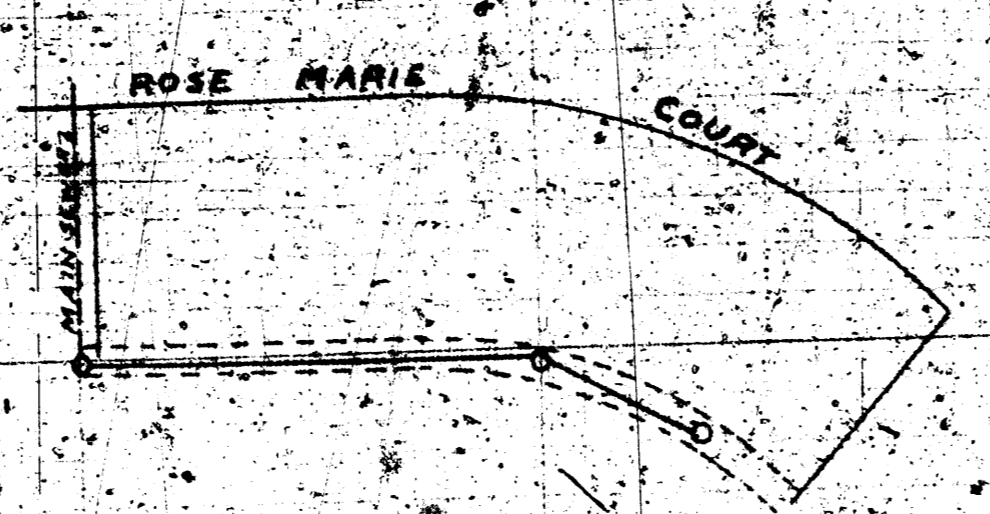
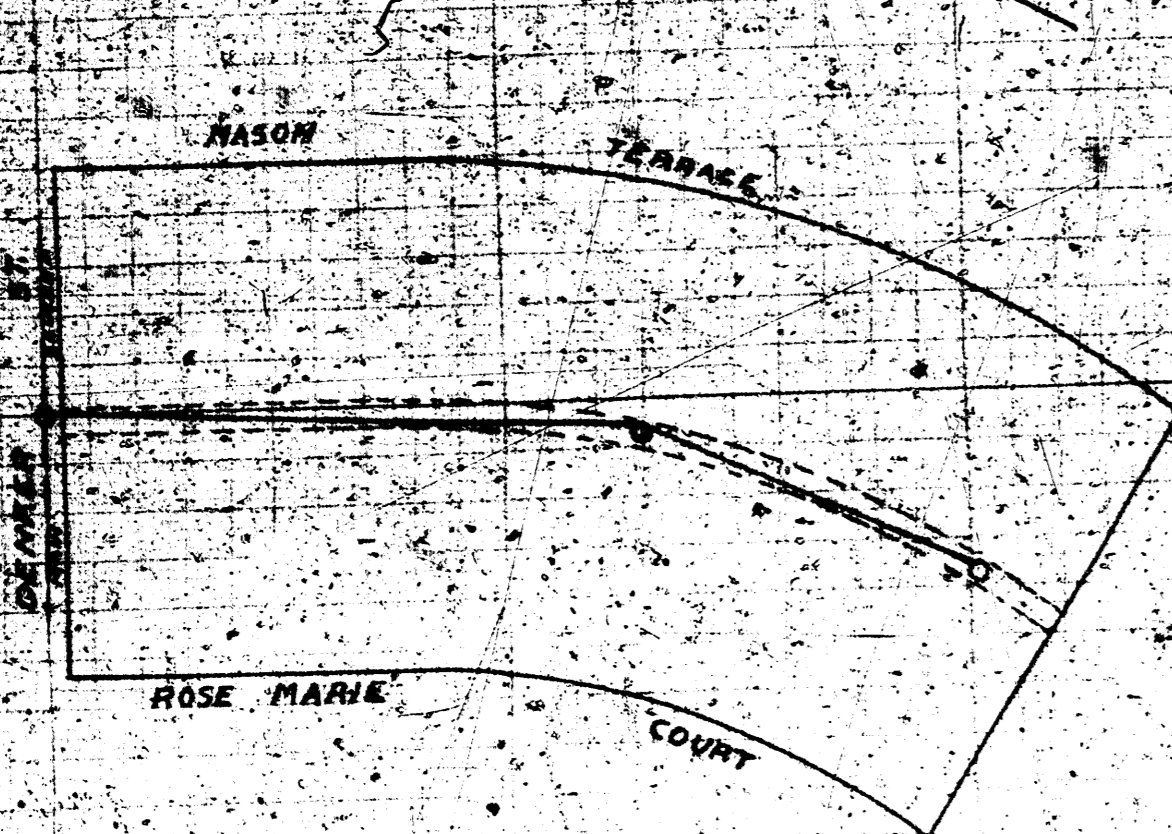
0.000 LAT. NO. 8

0.000 LAT. NO. 8

0.000 LAT. NO. 8

PLAN & PROFILE
OF
SANITARY SEWER
CLASSEN PARKED
ADDITION

Sheet 3

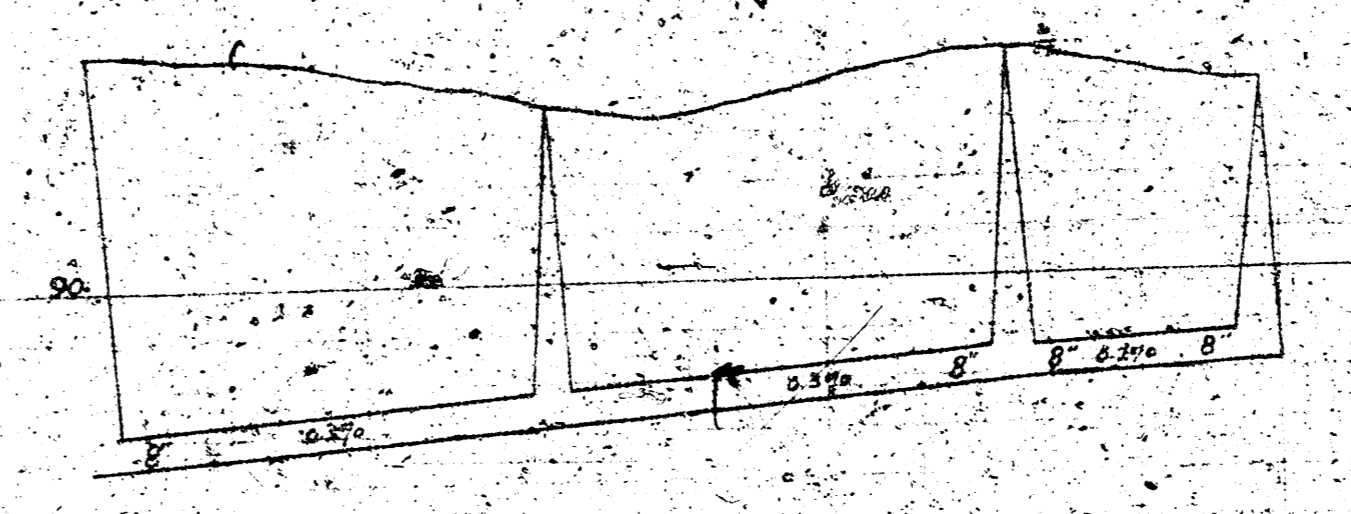
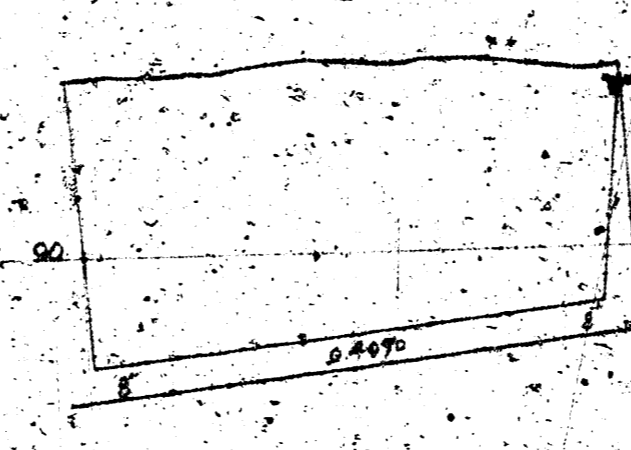
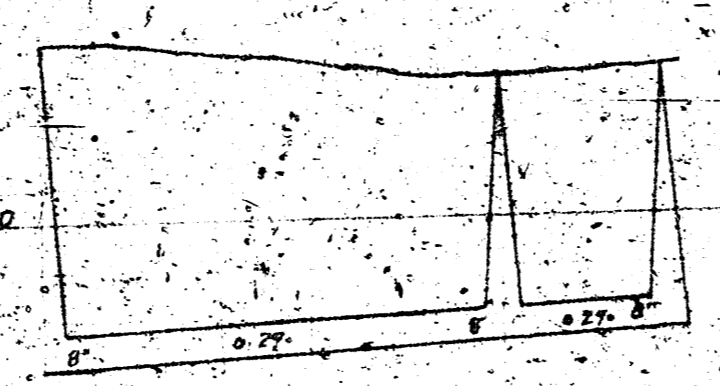


LATERAL No. 3

LATERAL No. 4

LATERAL No. 5

LATERAL No. 6



18" DIA. S.W. PIPE
0.25% SLOPE

18" DIA. S.W. PIPE
0.25% SLOPE

18" DIA. S.W. PIPE
0.25% SLOPE

18" DIA. S.W. PIPE
0.25% SLOPE

PLAN & PROFILE OF
SANITARY SEWER
CLASSEN PARK
ADDITION