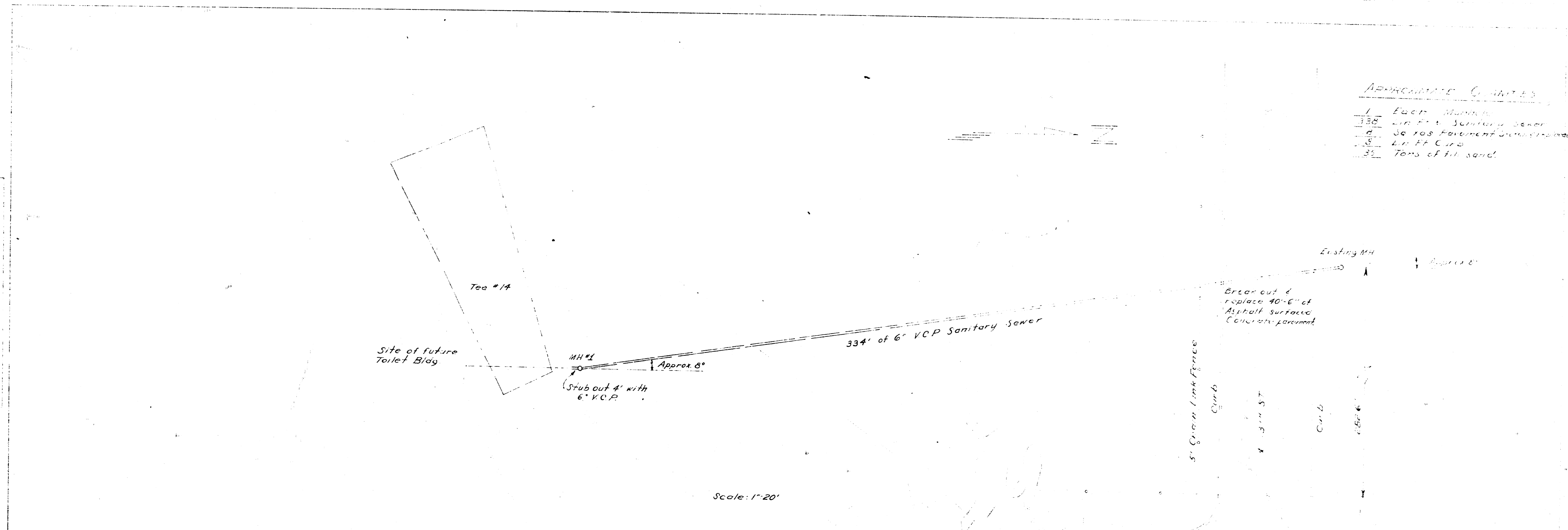


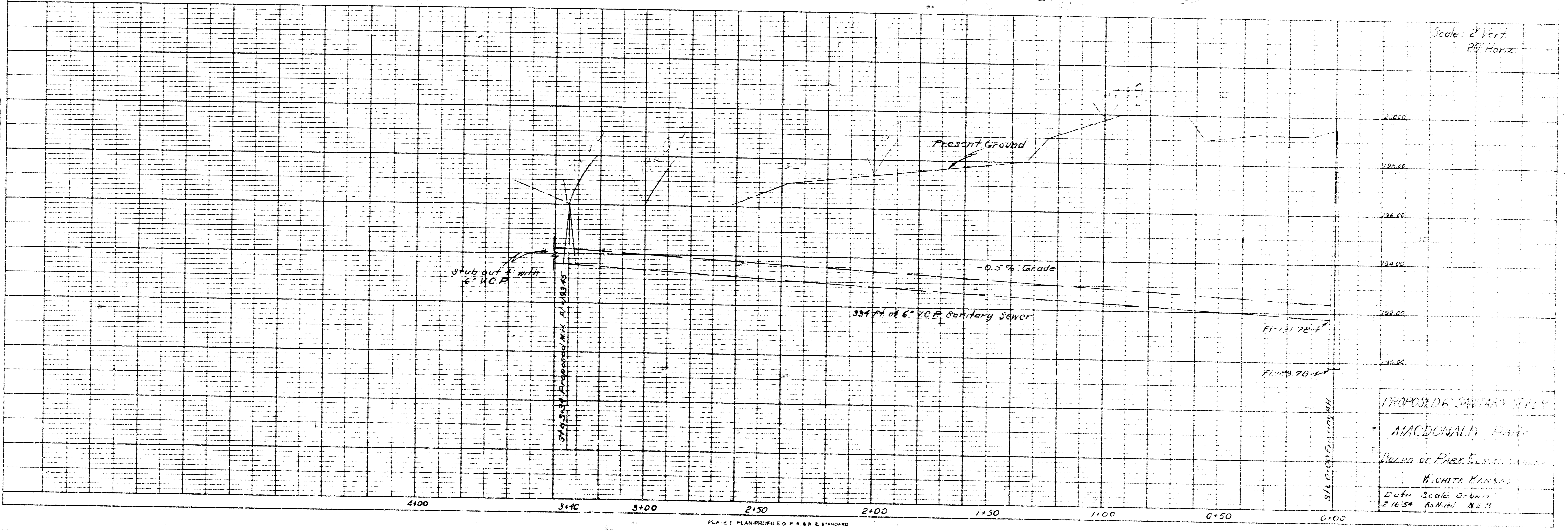
PLAN
 DATE: 11/15/54
 DRAWN BY: J. J. [unclear]
 CHECKED BY: [unclear]

PROFILE
 DATE: 11/15/54
 DRAWN BY: J. J. [unclear]
 CHECKED BY: [unclear]



- Approximate Quantities
- 1. Excavation
 - 2. 30' of 6\"/>
 - 3. 30' of 6\"/>
 - 4. 30' of 6\"/>
 - 5. 30' of 6\"/>

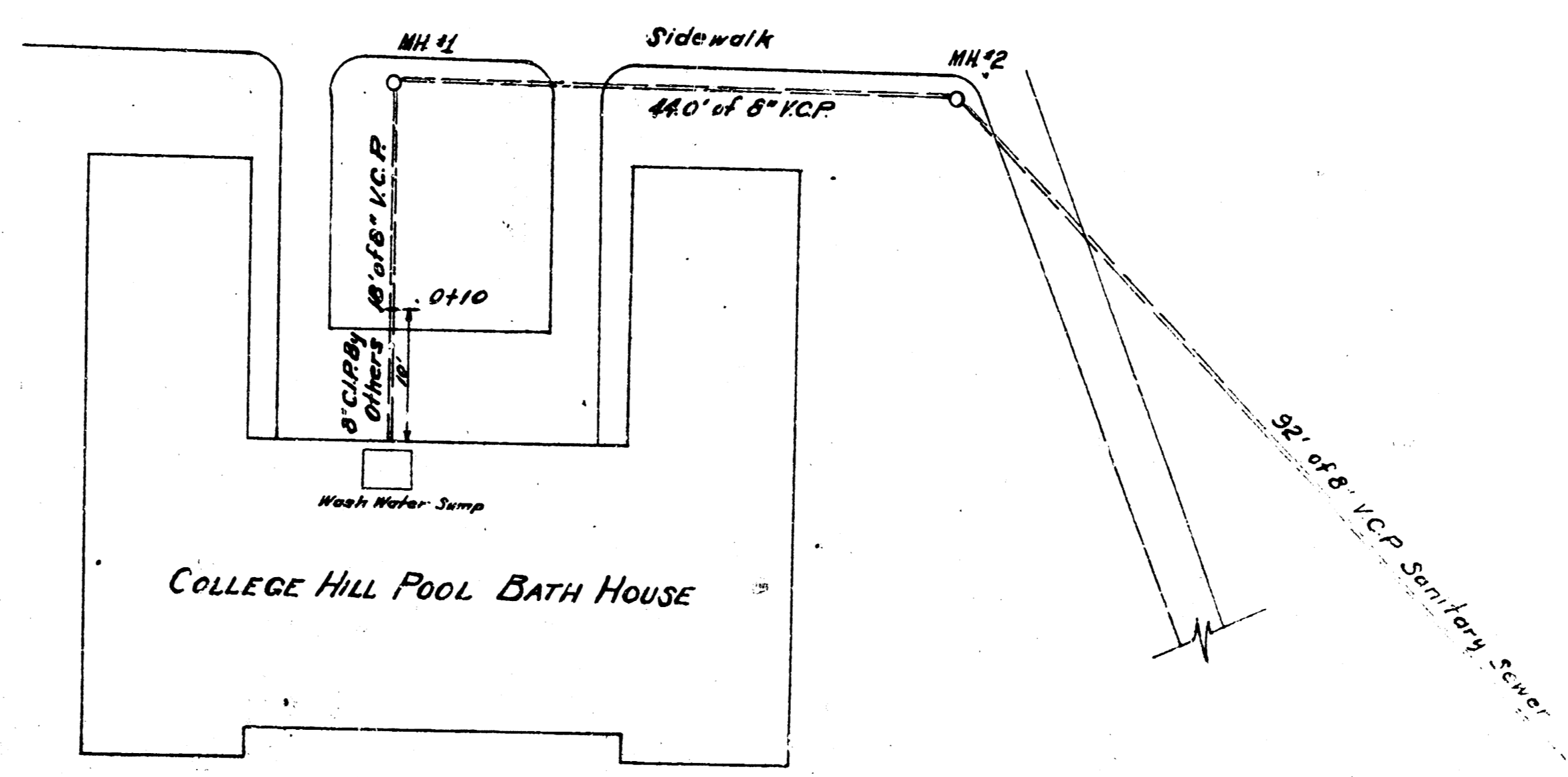
Scale: 1"=20'



Scale: 2" Vert
 20' Horiz.

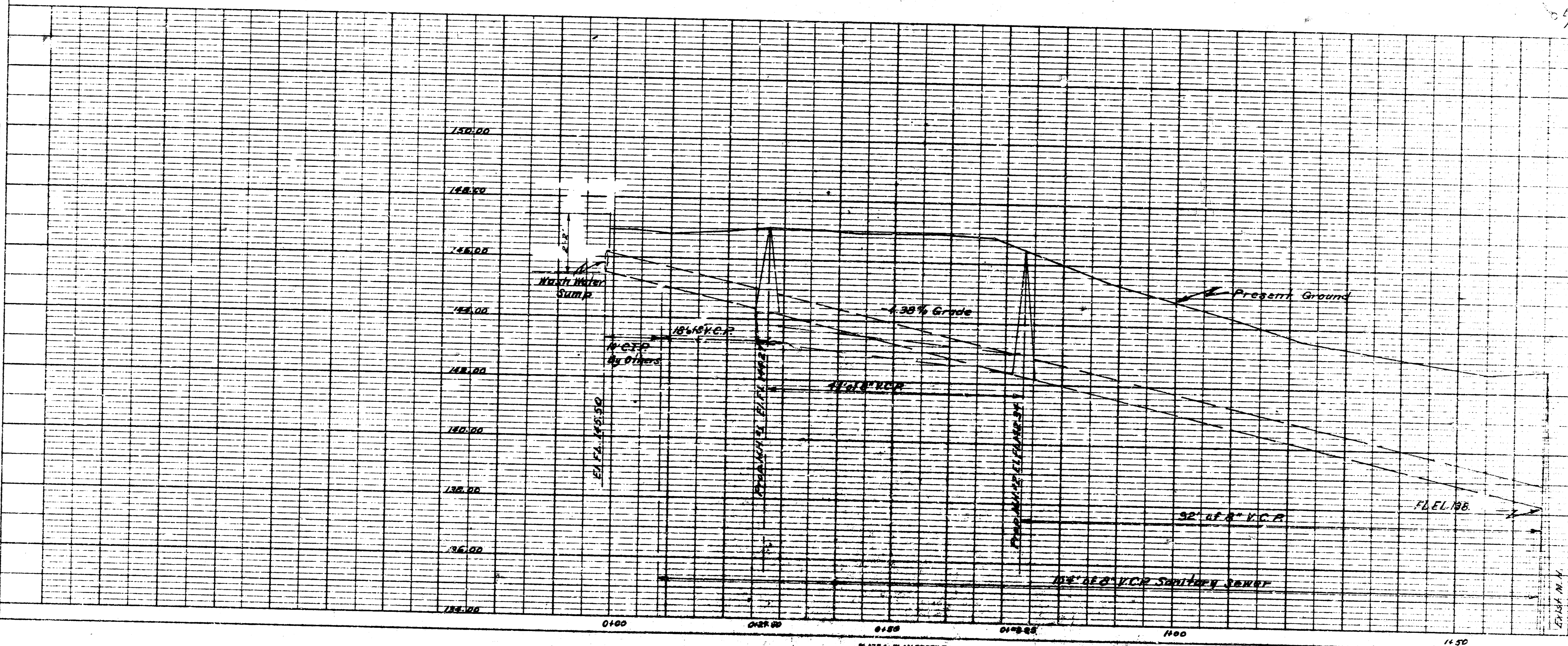
PROPOSED SANITARY SEWER
 MACDONALD PARK
 TOWNSHIP OF PUEBLO, KANSAS
 WICHITA, KANSAS
 Date: 11/15/54
 Scale: 2" Vert
 20' Horiz.

PLAN
 DRAWING NO. 12137
 SHEET NO. 1 OF 1
 DATE 12/13/37
 BY W. H. HANCOCK

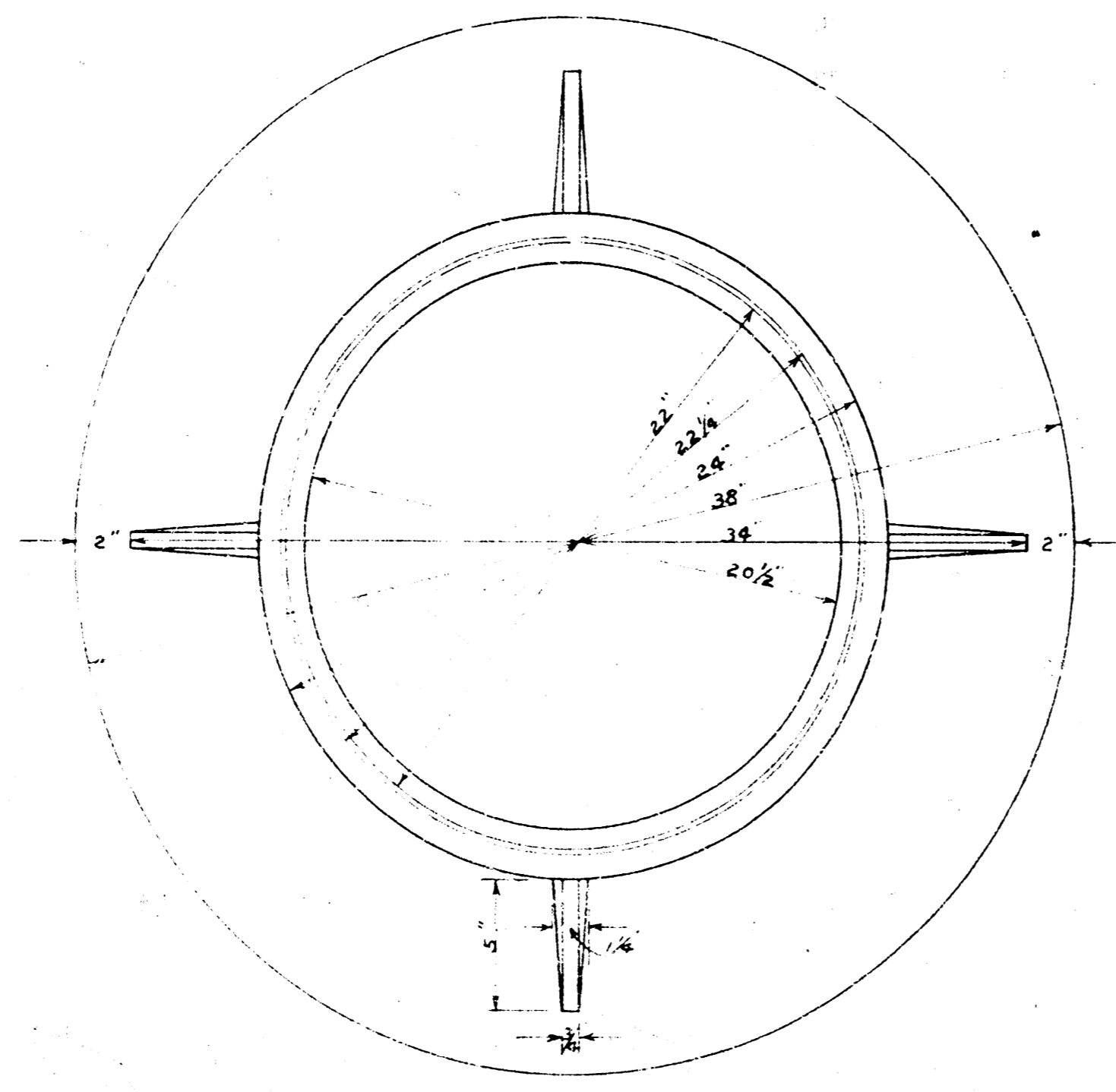


Scale = 1" = 10'

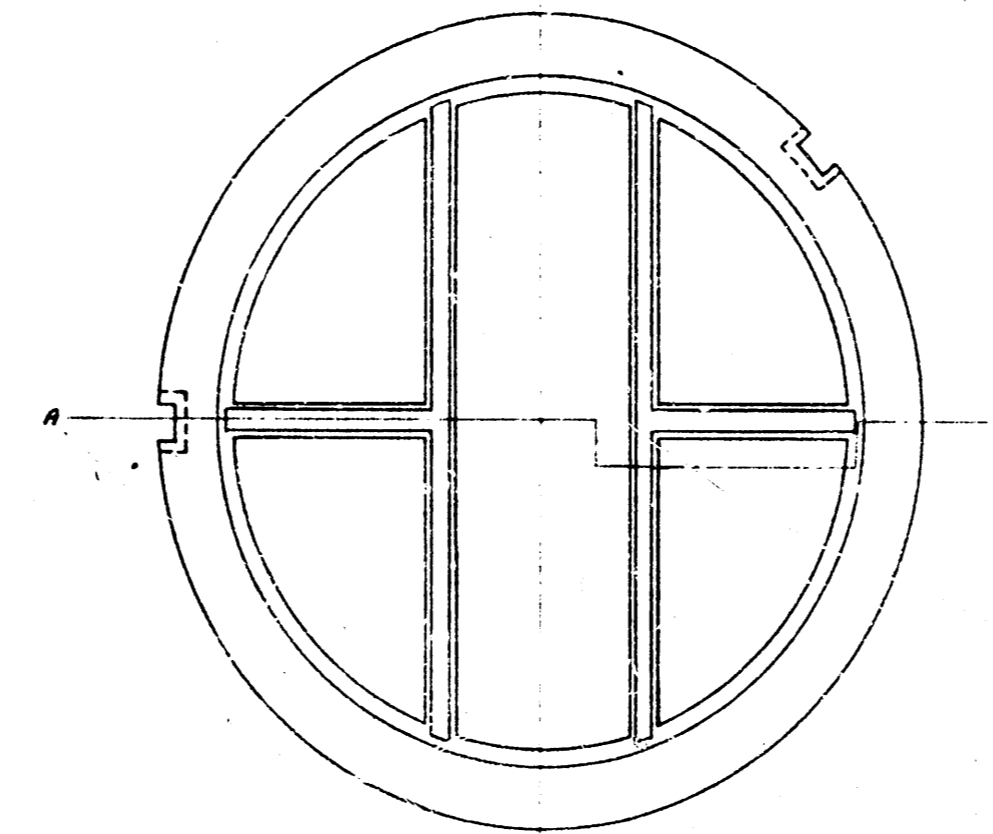
PROFILE
 DRAWING NO. 12137
 SHEET NO. 1 OF 1
 DATE 12/13/37
 BY W. H. HANCOCK



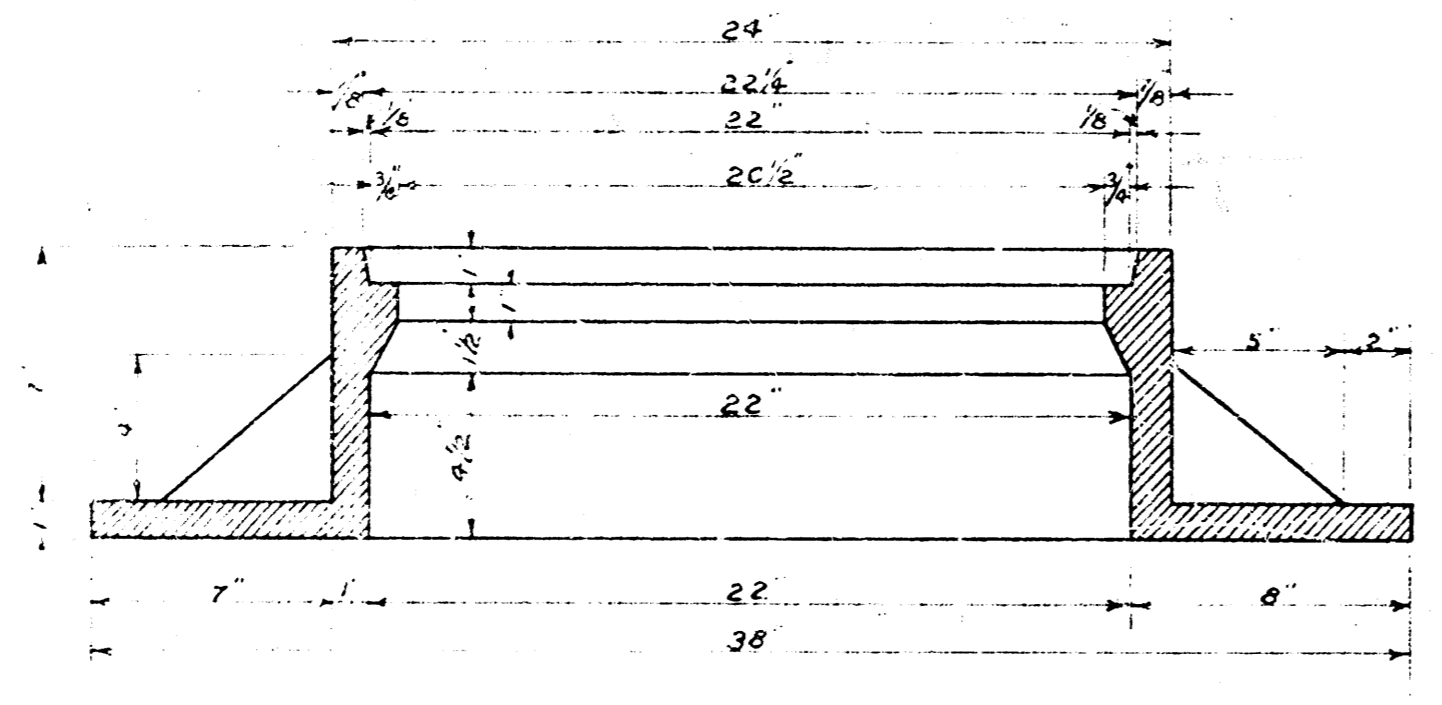
PROPOSED 8" SANITARY SEWER
 COLLEGE HILL PARK
 BOARD OF PARK COMMISSIONERS
 WICHITA KANSAS
 Date 12/13/37
 Scale 1" = 10'



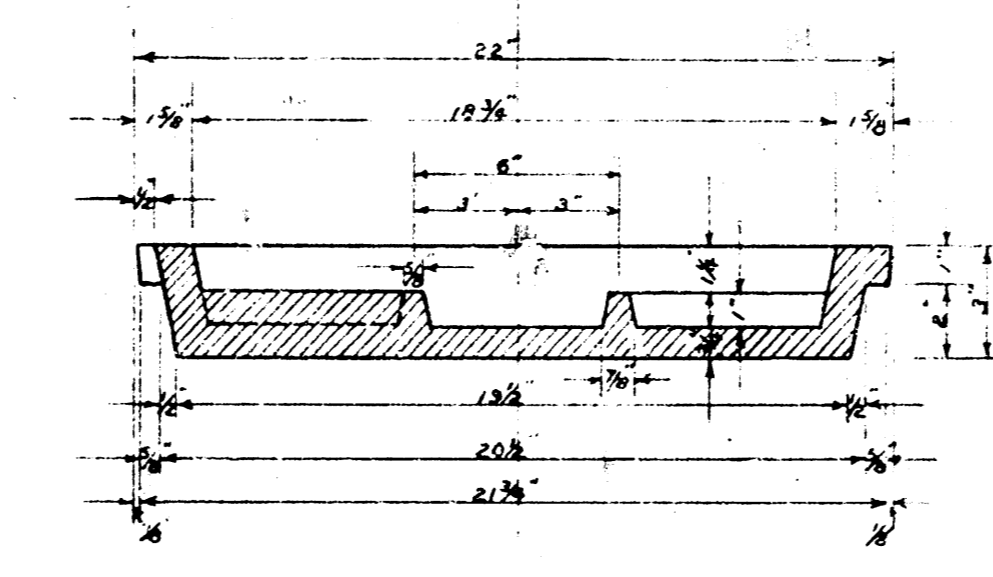
PLAN OF MANHOLE RING



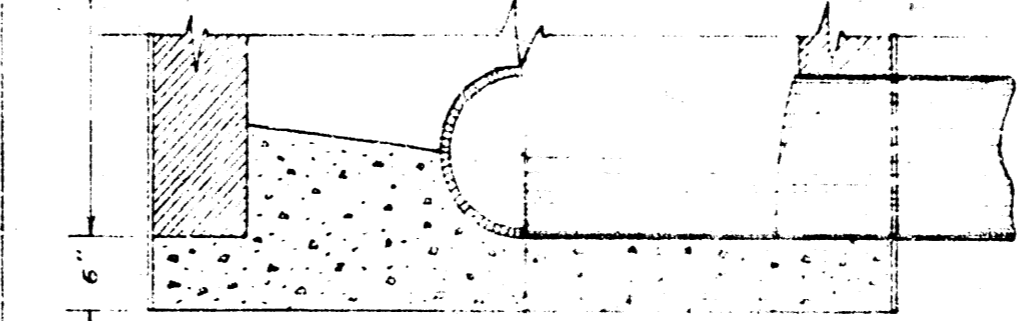
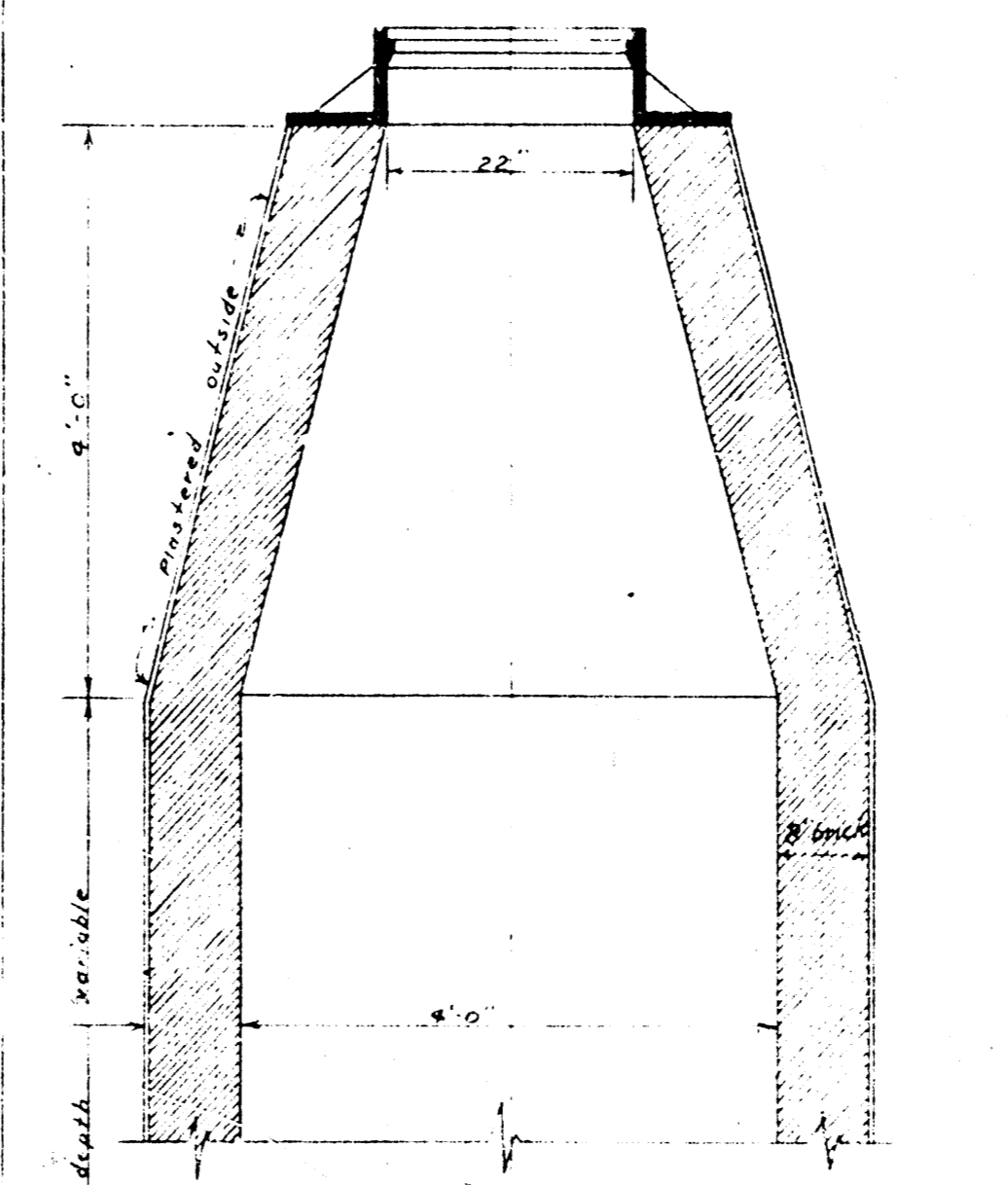
PLAN OF MANHOLE COVER



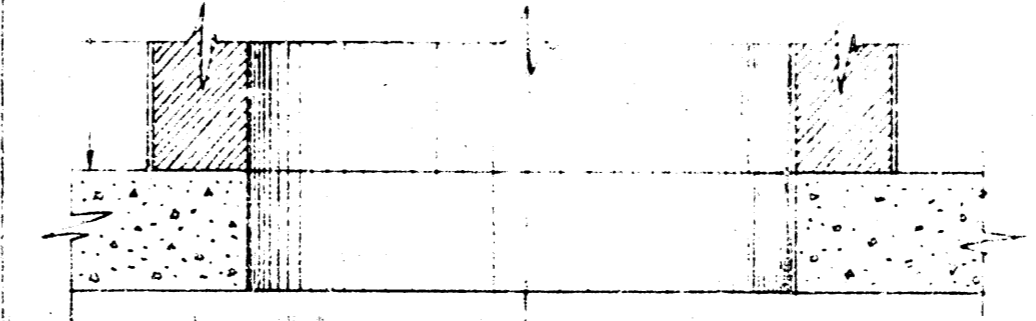
CROSS SECTION OF MANHOLE RING



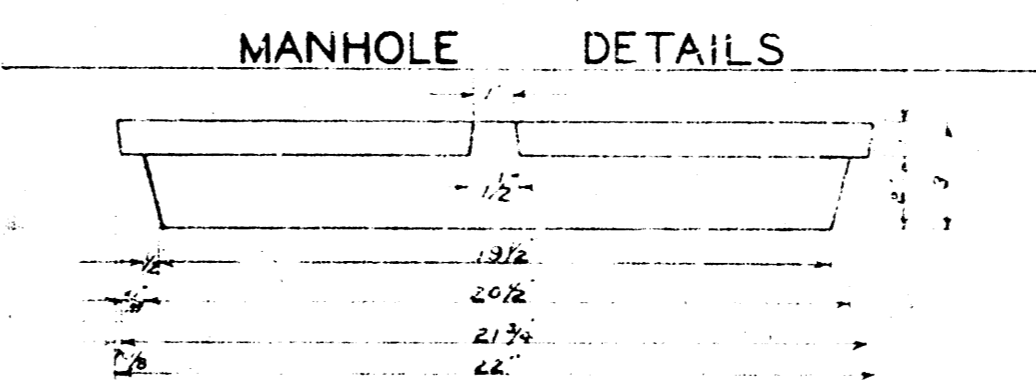
CROSS SECTION A-A
MANHOLE COVER
COVER TO BE FILLED FLUSH WITH
CONCRETE



CONCRETE BASE



OPEN BASE



MANHOLE DETAILS

ELEVATION - MANHOLE COVER

MANHOLE & COVER DETAILS			
STANDARD DETAIL			
BOARD OF PARK COMMISSIONERS			
WICHITA KANSAS			
APRIL 15, 1944			
SCALE: 1/4" = 1'-0"			
REV.	R.Y.	TRACING NO.	PRINT. NO.