

SANITARY SEWER TO SERVE

COMOTARA INDUSTRIAL PARK FOURTH ADDITION

Lots 31 & 32

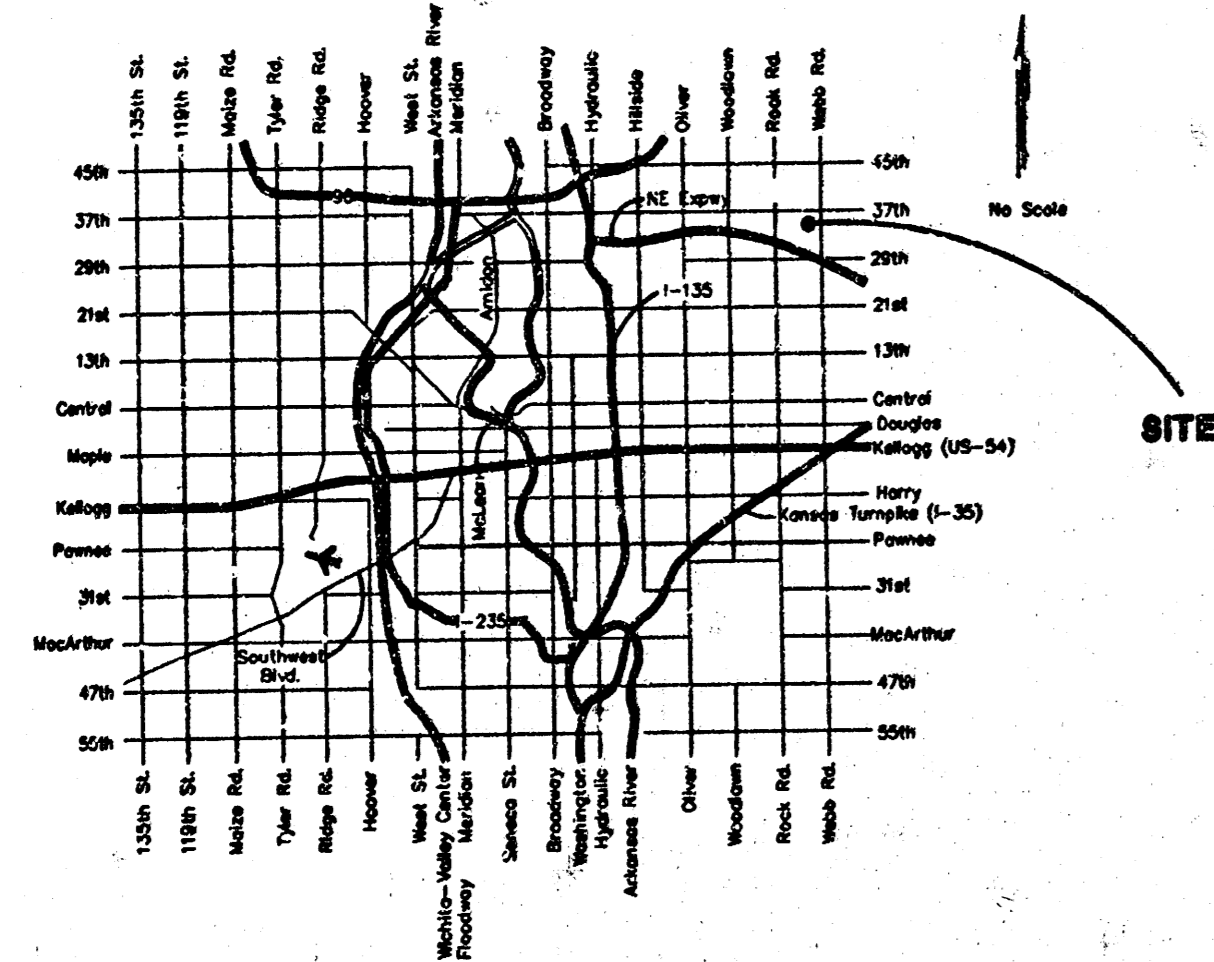
Private Project Number
1116 PPS (607861)

CITY OF WICHITA, KANSAS
Michael E. Lindebak, P.E. City Engineer
May 2001

Index

Cover / Plan / Profile Sheet	1
Manhole Detail	2
Manhole Frame & Cover Detail	3
Copy Of Plat	4

Location Map



BENCHMARKS

1. Webb Road and 34th Street North
COW Bench Mark - Northwest corner of intersection.
120 ft. North of back of curb.
64.00 ft. West of centerline of Webb
Elevation: 244.18 City Datum
2. * □ Top of Curb * 5' West of Inlet, South Side of
35th Street North near Northwest Corner of Lot 31,
Comotara Industrial Park Fourth Addition
Elevation: 240.71 City Datum

LEGAL DESCRIPTION

Lots 31 and 32, Comotara Industrial Park Fourth Addition,
Sedgewick County, Kansas.

General Notes

1. Contractor will be required to provide notice to utility companies a minimum of forty-eight (48) hours prior to any excavation, as follows:
Kansas One-Call 687-2470
The Contractor must notify the following in case of an emergency:
Cox Communications 262-4270
Kansas Gas Service Company 383-8600
Kansas Gas & Electric Company 383-8650
Peoples Gas Company 942-7600
Southwestern Bell Telephone Company 1-571-2611
City of Wichita Water Department 268-4908
City of Wichita Sewer Department 268-4071
2. Utility service lines, poles, valve boxes, meters, et cetera are to be adjusted as necessary by others prior to construction unless the plans specifically call for their adjustment by the Contractor or unless the plans specifically identify a utility to be adjusted by its owner during construction. Existing utilities and their location, as shown on the plans represent the best information obtainable for design and shall be field verified. The contractor will be required to work around existing utilities within the right-of-way which do not conflict with proposed construction.
3. Contractor shall not start work on the project until the project inspector is assigned to the project and is present on the site. Any work done without inspection will be required to be uncovered for inspection.
4. All disturbed R/W areas not intended for pavement or sidewalk construction shall be seeded with Kansas Premium Fescue Blend at a rate of 8 lb./1000 Sq. Ft., fertilized with a 16-20-6 ratio at a rate of 4 lb./1000 Sq. Ft. and mulched with Prairie Hay at a rate of 92 lb./1000 Sq. Ft. Mulch shall be "patted" with forks or punched into soil to reduce loss due to wind.
5. The Contractor shall be responsible for maintaining continuous flow of sewage through construction. Contractor's proposed method for maintaining sewage flow shall be approved by the Engineer. Cost of maintaining flow of sewage through construction will not be paid for directly and this cost shall be considered as subsidiary to the other pay items of work.
6. Rubble from the removal of miscellaneous structures and excess excavation which is to be wasted shall be disposed of on sites to be provided by the Contractor. These sites shall be approved by the Engineer as to suitability, appearance and site location. Locations that, in the opinion of the Engineer, will leave an unsightly appearance will not be approved. All disposal sites must be approved by the Kansas Department of Health and Environment. Material either stockpiled or disposed of in a flood plain would require a Kansas State Board of Agriculture permit. Any material dumped in waters of the United States or wetlands is subject to U.S. Corps of Engineers permitting regulations. Any material buried or stockpiled beyond approved construction limits would require additional archaeological investigations unless buried in a previously approved borrow location.

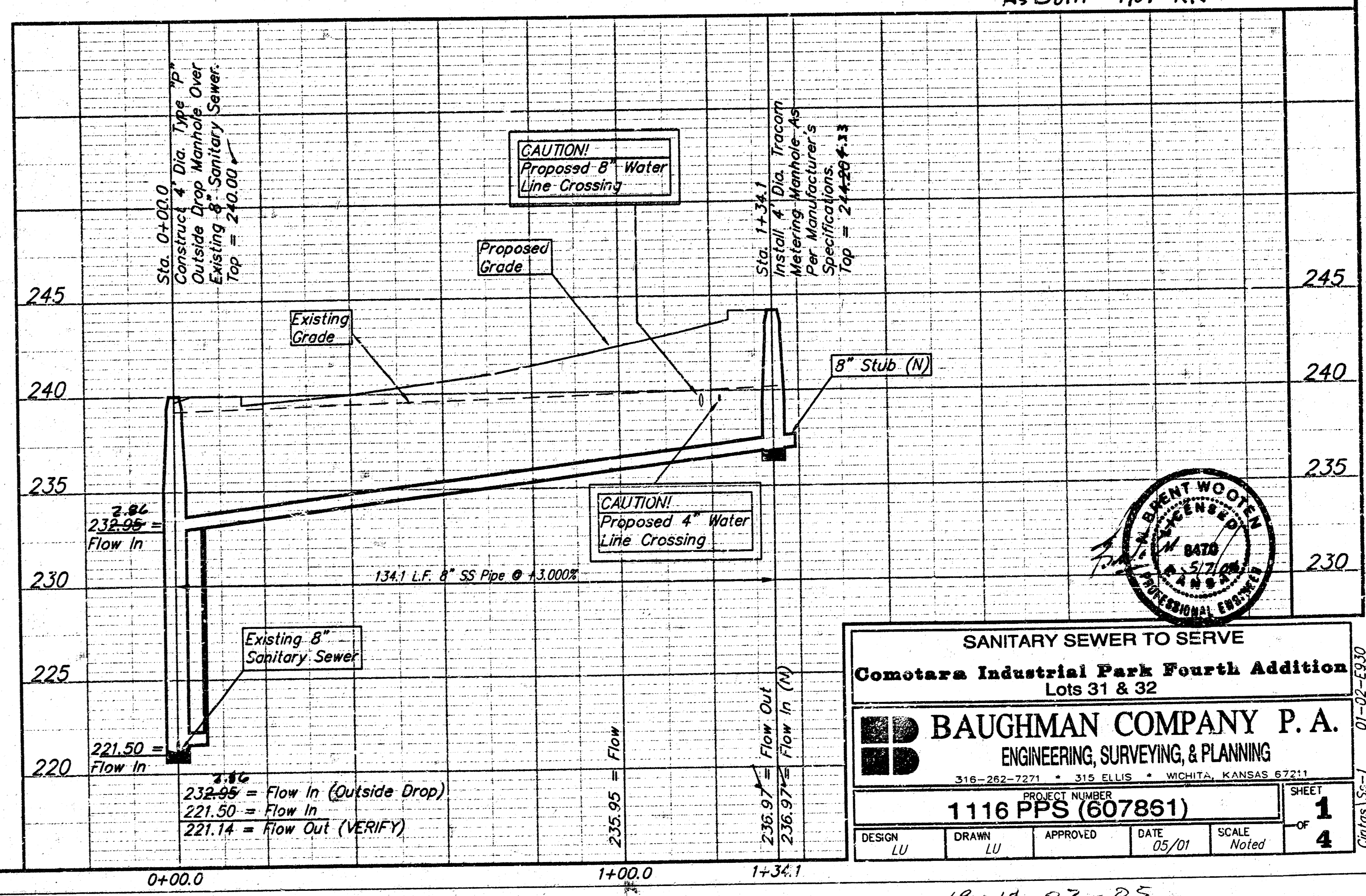
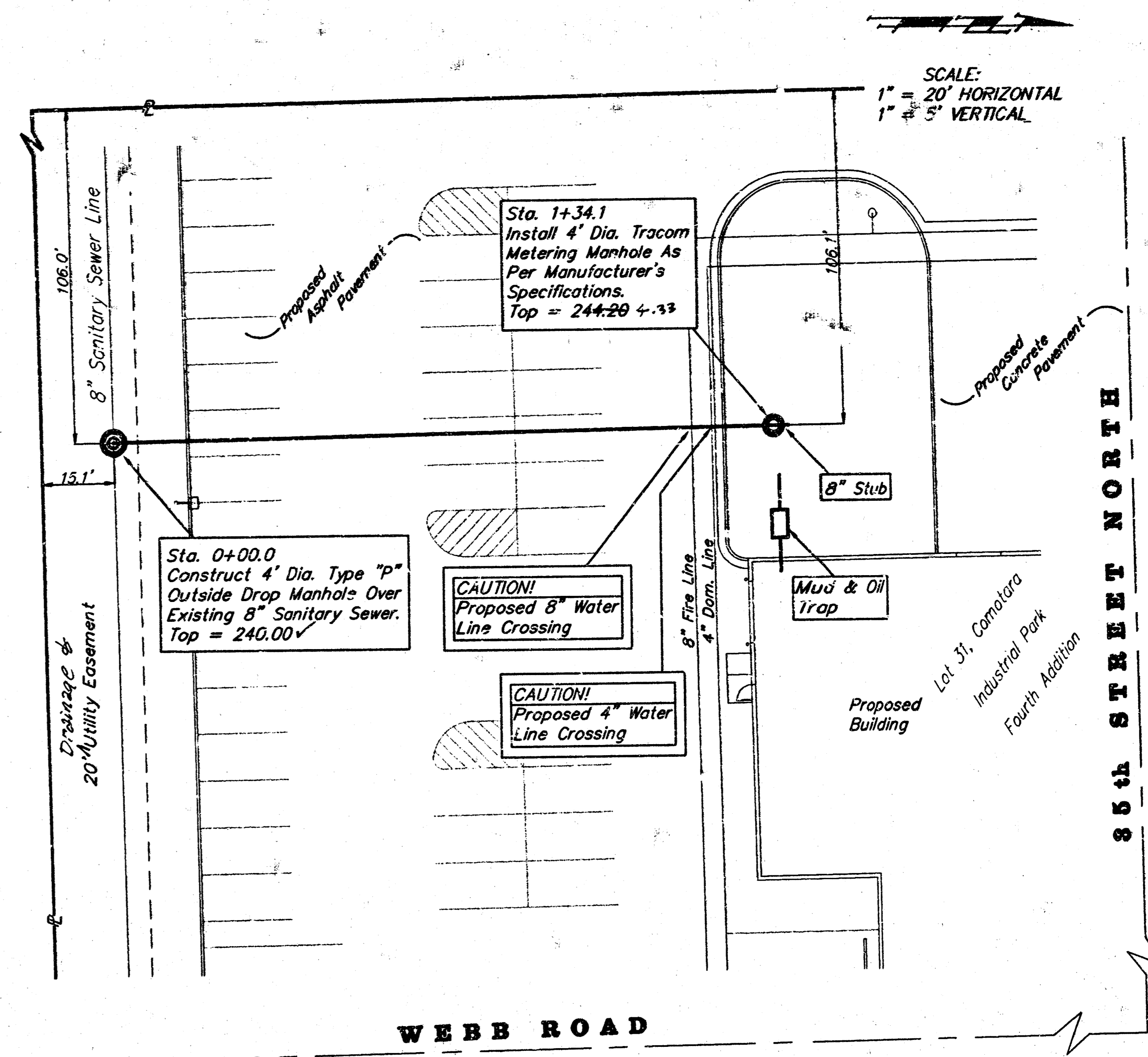
APPROVED AS NOTED
BY CITY ENGINEER OF WICHITA

Sanitary Sewers VRLH 5/11/01

NOTE TO CONTRACTORS

Installation, inspection and testing for this project is to be provided by a Licensed Consulting Engineering Firm under contract with the Owner/Developer. Said inspection to be in accordance with the City of Wichita standard construction engineering practices and certified by a Licensed Professional Engineer. No work shall be performed in dedicated easements or public right-of-way by the Contractor without such inspection nor shall any work be commenced without written authorization by the City Engineer. All Construction and Materials shall comply with the City of Wichita Specifications and Standards (on file and available in the City Engineer's Office).

Booked
P-190
10-11-01
RNL



SANITARY SEWER TO SERVE
Comotara Industrial Park Fourth Addition
Lots 31 & 32

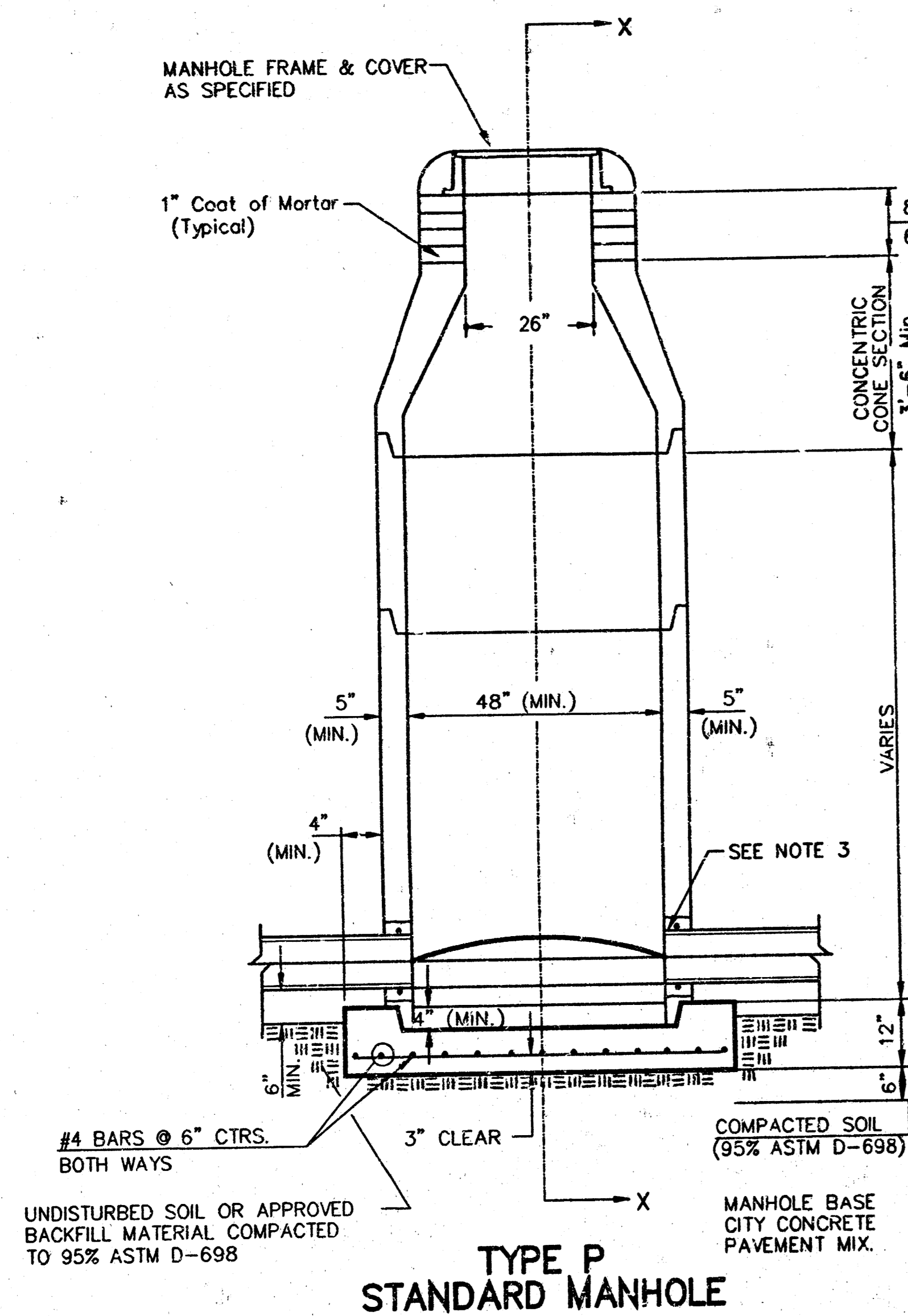
BAUGHMAN COMPANY P. A.
ENGINEERING, SURVEYING & PLANNING
316-262-7271 315 ELLIS - WICHITA, KANSAS 67211

PROJECT NUMBER
1116 PPS (607861)

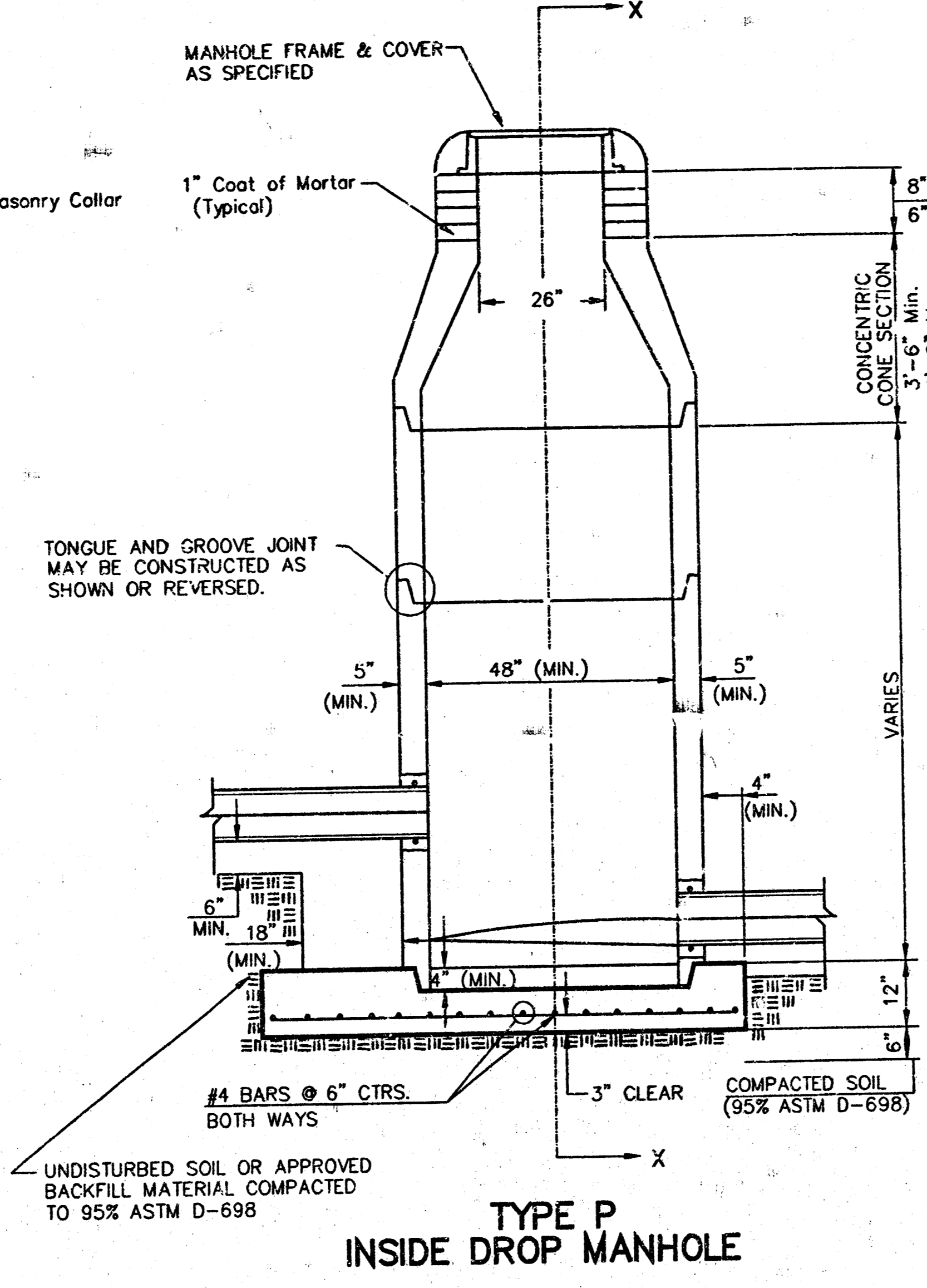
DESIGN LU DRAWN LU APPROVED DATE 05/01 SCALE Noted SHEET 1 OF 4

18-14-03-05

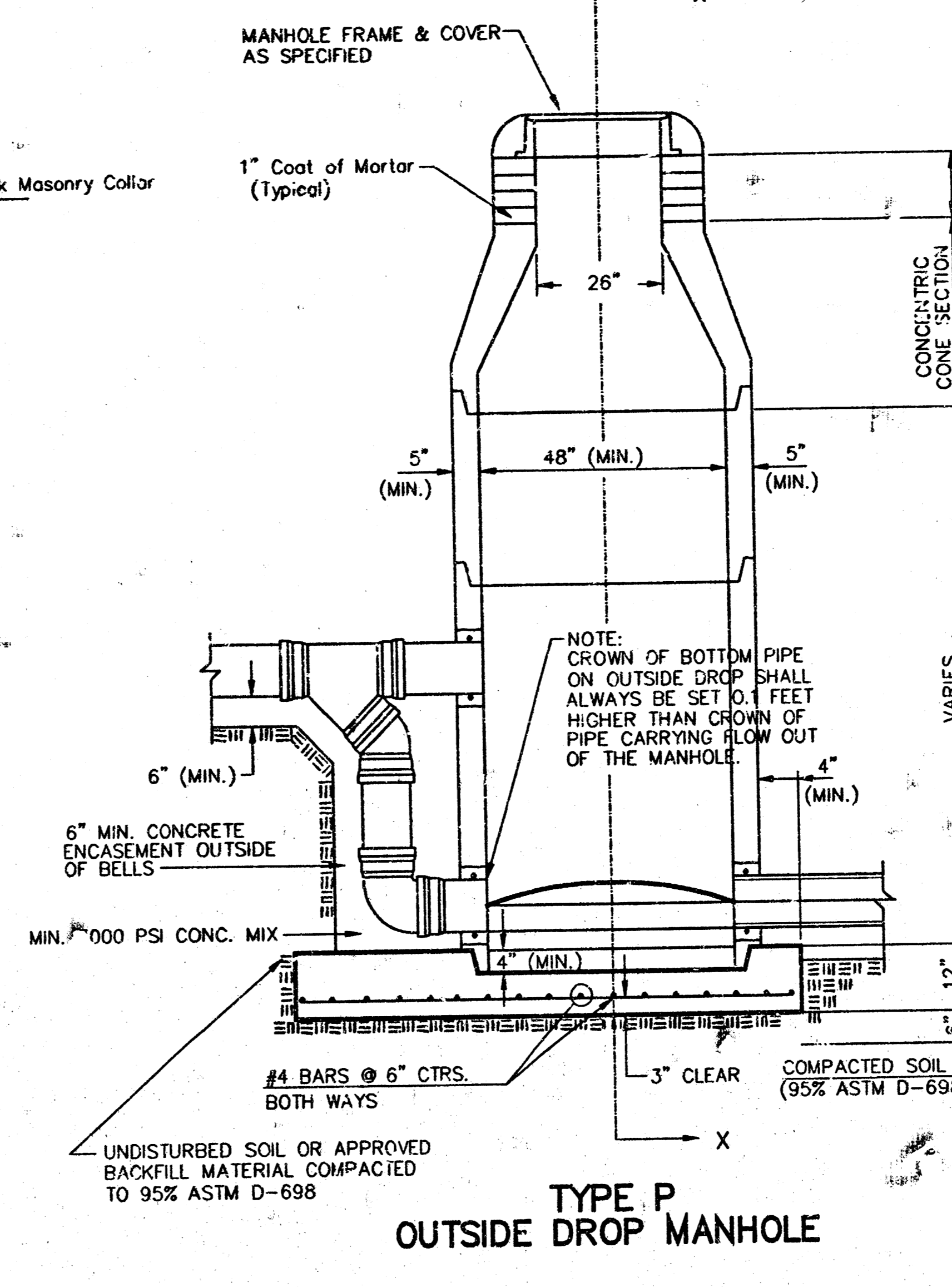
SEWER APPURTENANCES DETAILS



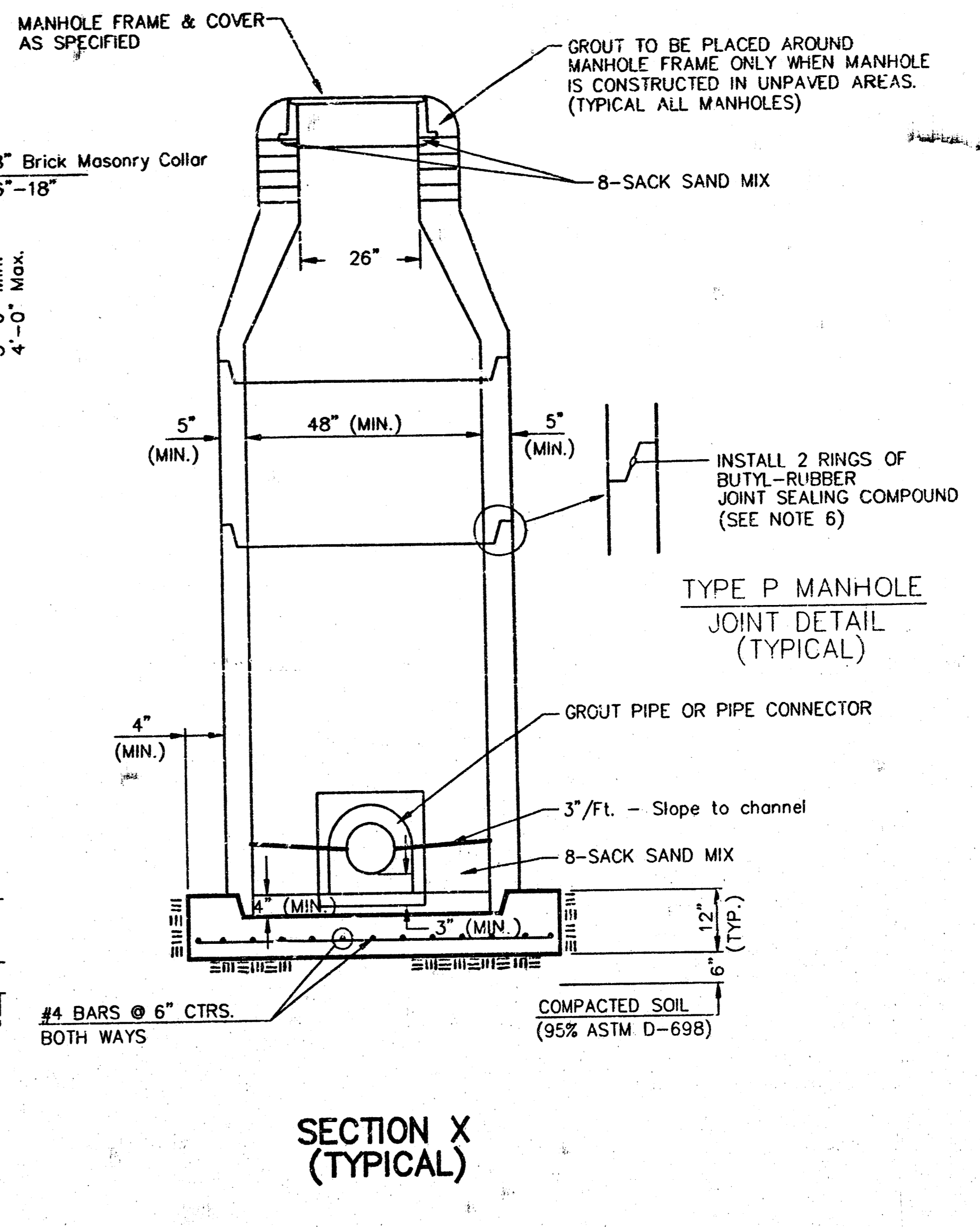
TYPE P STANDARD MANHOLE



TYPE P INSIDE DROP MANHOLE



TYPE P OUTSIDE DROP MANHOLE

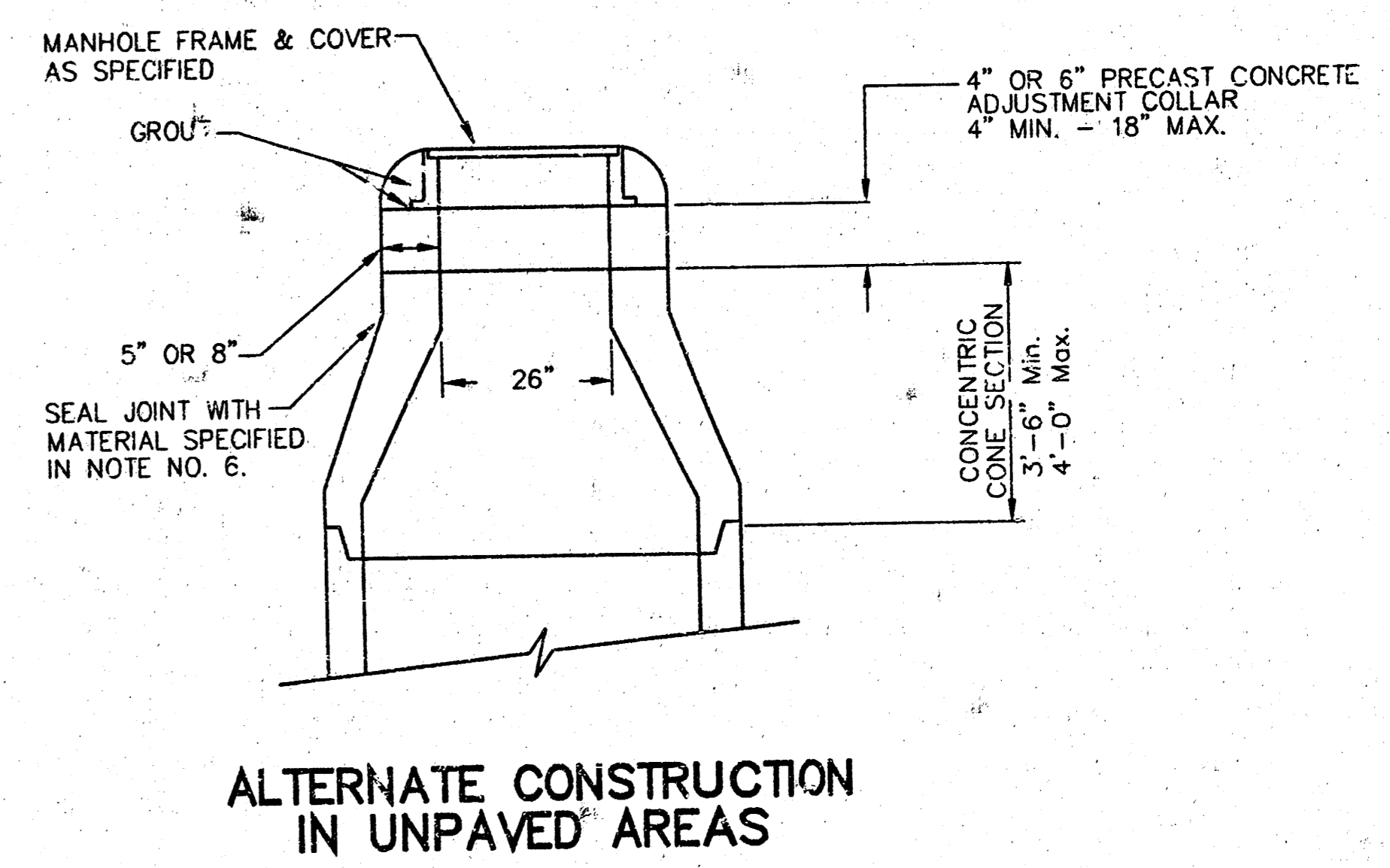


SECTION X (TYPICAL)

- GENERAL NOTES**
PRECAST MANHOLE NOTES
- ALL PRECAST CONCRETE MANHOLE SECTIONS SHALL CONFORM TO THE LATEST REVISIONS OF A.S.T.M. C478 AS MODIFIED BY THE SPECIFICATIONS.
 - NON-SHRINK GROUT SHALL BE NON-METALLIC TYPE.
 - APPROVED FLEXIBLE WATERSTOP GASKETS SHALL BE INSTALLED TO JOIN THE SEWER TO THE MANHOLE WALL WHEN A.B.S. COMPOSITE PIPE OR P.V.C. PIPE IS USED. FOR OTHER TYPES OF PIPE THE SEWER SHALL BE GROUTED IN PLACE WITH NON-SHRINK GROUT. THE SEWER PIPE SHALL BE SUPPORTED WITH CONCRETE ENCASEMENT A MINIMUM OF 3 FEET FROM THE MANHOLE WALL AND TO THE FIRST JOINT FOR V.C.P. SUCH THAT THE JOINT REMAINS FLEXIBLE.
 - ALL INSIDE SURFACES OF THE CONCRETE MANHOLE WHICH WOULD BE EXPOSED TO SEWER GAS SHALL BE COATED WITH 2 COATS THEMEC SERIES 66 HI-BUILD EPOXYLINE, DRY THICKNESS OF 8 MILS (MIN.).
 - EXTERIOR MANHOLE WALLS SHALL BE COATED WITH 1 COAT MOBILARMA 633 BITUMINOUS COATING.
 - JOINT SEALING COMPOUND SHALL BE KENT SEAL NO. 2 OR APPROVED EQUAL.
 - PRECAST MANHOLES SHALL BE SET AT LEAST 4 INCHES INTO THE MANHOLE BASE.
 - TOP OF MANHOLE FLOOR SLAB SHALL BE AT LEAST 3 INCHES BELOW THE FLOW LINE OF THE OUTLET PIPE TO INSURE SUFFICIENT MINIMUM THICKNESS OF SHAPED INVERT.
 - LIFTING HOLES SHALL BE FILLED WITH NON-SHRINK GROUT AND THE INTERIOR SURFACE COATED AS SPECIFIED.
 - MORTAR USED IN MASONRY CONSTRUCTION SHALL CONTAIN 8 SACKS OF CEMENT PER CUM. YARD. CONCRETE USED IN MANHOLE BASES SHALL CONFORM TO THE REQUIREMENTS OF CONCRETE FOR CONCRETE PAVEMENT CONSTRUCTION AS SPECIFIED IN THE CITY STANDARD PAVING SPECIFICATIONS USING CITY CONCRETE PAVEMENT MIX WITHOUT AIR ENTRAINING ADMIXTURE. MORTAR SHALL BE PLACED AROUND THE MANHOLE RING AS SHOWN ON THE DRAWINGS WHEN MANHOLES ARE CONSTRUCTED IN UNPAVED AREAS. MANHOLES CONSTRUCTED WHERE PIPE SIZES ARE SMALLER THAN 24" SHALL HAVE AN INSIDE DIAMETER OF 4". MANHOLES CONSTRUCTED WHERE PIPE SIZES ARE 24" OR LARGER SHALL HAVE AN INSIDE DIAMETER OF 5". COMPLETED MANHOLE SHALL BE WITHOUT LEAKS AND WATER TIGHT.

- REINFORCING STEEL SHALL BE INSTALLED IN THE MANHOLE BASES AND SHALL CONSIST OF NO. 4 BARS PLACED ON 6" CENTERS IN BOTH DIRECTIONS. THE MANHOLE BASE REINFORCEMENT SHALL BE PLACED AT LEAST 3" ABOVE THE BOTTOM OF THE MANHOLE BASE. ALL COSTS FOR FURNISHING AND INSTALLING REINFORCING STEEL SHALL BE INCLUDED IN THE UNIT PRICE BID FOR THE MANHOLE.
- OPENINGS SHALL BE CUT INTO THE MANHOLE WALL WHEN OUTSIDE DROPS ARE CONSTRUCTED ON EXISTING MANHOLES. SUCH OPENINGS CUT INTO EXISTING MANHOLES SHALL BE AS SMALL AS PRACTICAL TO FACILITATE INSTALLING AND GROUTING THE NEW PIPE IN PLACE. WATERSTOP GASKETS SHALL BE USED WITH P.V.C. AND A.B.S. COMPOSITE PIPE. THE NEW PIPE SHALL BE GROUTED INTO THE OPENING USING AN APPROVED NON-SHRINK GROUT FOR THE FULL MANHOLE WALL THICKNESS. THE NON-SHRINK GROUT FOR THE FULL MANHOLE WALL THICKNESS. THE APPROVED BITUMINOUS COATING SUCH THAT THE CONNECTION WILL BE WATER TIGHT. FLOOR OF MANHOLE SHALL BE MODIFIED TO FORM NEW FLOW CHANNEL FOR THE NEW CONNECTION AS INDICATED BY THE DRAWING. THIS WORK, INCLUDING MODIFICATION OF MANHOLE FLOOR, SHALL BE PAID FOR AT THE UNIT PRICE BID FOR OUTSIDE DROP STACK CONSTRUCTED ON EXISTING MANHOLE.
- THE FLOORS OF ALL MANHOLES SHALL BE SHAPED WITH FLOW CHANNELS SUCH THAT THE MANHOLES WILL BE SELF CLEANING AND FREE OF AREAS WHERE SOLIDS COULD BE DEPOSITED AS SEWAGE FLOWS THROUGH THE MANHOLE FROM ALL INLET PIPES TO THE OUTLET PIPE. FLOW CHANNELS SHALL BE FORMED TO MATCH THE BOTTOM HALVES OF THE INFLOWING PIPES AND THE OUTFLOWING PIPE AS SHOWN BY THE DRAWINGS EXCEPT FOR INSIDE DROP MANHOLES. FLOW CHANNELS FOR INSIDE DROP MANHOLES SHALL BE CONSTRUCTED AS INDICATED BY THE DRAWING. MANHOLE FLOORS SHALL HAVE SLOPES OF 3 INCHES PER FOOT IN THE AREAS OUTSIDE OF THE FLOW CHANNELS SLOPED TOWARD THE FLOW CHANNELS. PIPES LAID THROUGH MANHOLES SHALL HAVE THE TOP HALF REMOVED TO NEAT LINES FOR THE FULL INSIDE DIAMETER OF THE MANHOLE. MANHOLE FLOORS SHALL THEN BE SHAPED AROUND THE BOTTOM HALF OF THE PIPE WHICH FORMS THE FLOW CHANNEL.
- PIPES INSTALLED WITHIN THE EXCAVATION MADE FOR THE MANHOLE SHALL BE CRADLED WITH CONCRETE TO THE LIMITS OF THE MANHOLE EXCAVATION. WHEN CLAY PIPE IS USED, THE CRADLE SHALL EXTEND TO THE FIRST JOINT OUTSIDE THE MANHOLE. THE CRADLE SHALL BE TERMINATED AT THE CLAY PIPE JOINT IN A MANNER WHICH WILL MAINTAIN THE FLEXIBILITY OF THE JOINT. COST OF CRADLE WITHIN MANHOLE EXCAVATION OR TO CLAY PIPE JOINTS ADJACENT TO MANHOLE SHALL BE INCLUDED IN THE UNIT PRICE BID FOR THE MANHOLE.

- MANHOLE COVER CASTINGS SHALL CONFORM TO THE REQUIREMENTS AS INDICATED IN THE STANDARD SPECIFICATIONS AND AS SHOWN IN THE STANDARD DETAIL DRAWING.
- THE VERTICAL DROP IN INSIDE DROP MANHOLES SHALL NOT EXCEED 2' FOR INFLOWING PIPES SIZED 12" OR SMALLER AND 2' FOR INFLOWING PIPES LARGER THAN 12". THE CROWNS OF INFLOWING PIPES SHALL NEVER BE SET LOWER THAN THE CROWN OF THE OUTFLOWING PIPE.
- STANDARD MANHOLES AND STANDARD INSIDE DROP MANHOLES SHALL BE BID AS STANDARD MANHOLES FOR THE TYPE AND DIAMETER INDICATED. OUTSIDE DROP MANHOLES SHALL BE BID AS STANDARD OUTSIDE DROP MANHOLES FOR THE TYPE AND DIAMETER INDICATED. ALL MANHOLE DIAMETERS WILL BE 4' UNLESS INDICATED OTHERWISE.
- A BRICK MASONRY COLLAR SHALL BE INSTALLED BETWEEN THE CAST IRON FRAME AND THE CONCENTRIC CONE. THE COLLAR WILL HAVE 8" WALLS AND A VERTICAL HEIGHT OF 6" MINIMUM AND 18" MAXIMUM. A 1" COAT OF MORTAR WILL BE PLASTERED ON THE OUTSIDE OF THE COLLAR. THE USE OF PRE-CAST CONCRETE SPACERS FOR MANHOLE TOP ADJUSTMENT IS ALSO ALLOWED.



ALTERNATE CONSTRUCTION IN UNPAVED AREAS

CITY OF WICHITA
STD. MANHOLE DETAILS
SEWER APPURTENANCES

BAUGHMAN COMPANY P.A.
ENGINEERING, SURVEYING, & PLANNING
316-262-7271 • 316-262-7272 • WICHITA, KANSAS 67211

PROJECT NUMBER: 1118 PFS (607861)
SHEET 2 OF 4

DESIGN STAFF: _____ DATE: 05/01
DRAWN STAFF: _____ SCALE: NONE
APPROVED: _____

CC-2 1-H

21-22

FINAL PLAT OF COMOTARA INDUSTRIAL PARK FOURTH ADDITION

AN ADDITION TO WICHITA, SEDGWICK COUNTY, KANSAS

I, Steven E. Anderson a Land Surveyor in Kansas, do hereby certify that I have been in responsible charge of surveying and platting of "Comotara Industrial Park Fourth Addition" to Wichita, Sedgwick County, Kansas, into lots and a street, the same being accurately set forth in the accompanying plat and described as follows:

A replat of part of Blocks 3 and 4, Comotara Business Park Addition to Wichita Sedgwick County, Kansas described as follows:

Beginning at a point on the west line of the northeast quarter, Section 32, T 26 S, R 2 E of the 6th P.M., 50.00 feet south of the northwest corner of said quarter; thence east along the south line of 37th Street North bearing N 89° 07' 32" E, 2435.41 feet; thence S 1° 05' 53" E, 158.00 feet; thence N 89° 07' 32" E, 149.00 feet to the west line of Webb Road; thence south along said west line bearing S 1° 05' 53" E, 1427.00 feet; thence S 89° 07' 32" W, 2588.56 feet to the east line of Comotara Industrial Park Second Addition; thence north along said east line bearing N 0° 56' 53" W, 1585.00 feet to the point of beginning. Containing 95.57 acres, more or less.

35th Street, as dedicated in plat of Comotara Business Park Addition, is hereby vacated by virtue of K.S.A. 12-512-B.

I hereby certify that the details of the plat are correct to the best of my knowledge and belief this 27th day of September, 1978.

By: Steven E. Anderson
Steven E. Anderson
Van Doren-Hazard-Stallings
Architects-Engineers
260 North Rock Road
Wichita, Kansas



Know all men by these presents, that we the undersigned property owners of the land as above set forth in the Land Surveyor's Certificate, have caused the same to be surveyed and platted into lots and a street, the same to be known as "Comotara Industrial Park Fourth Addition" to Wichita, Sedgwick County, Kansas. The street is hereby dedicated to and for the use of the public. Easements for drainage, and construction and maintenance of public utilities, as indicated on the accompanying plat, are hereby granted. All abutter's rights of access across the south line of 37th Street North and across the west line of Rock Road are hereby granted to the City of Wichita, Kansas, provided, however, that the subdivision shall have access to 37th Street North at one location per lot and shall have access to Webb Road at one location per lot.

Wichita Development Company

By: Robert R. Fox
Robert R. Fox
Attorney in Fact for Wichita Development Company

State of Kansas, County of Sedgwick SS:

Be it remembered that on this 27th day of September, 1978 before me, a Notary Public in and for said State and County, came the Wichita Development Company, by Robert R. Fox, Attorney in Fact for Wichita Development Company, to me personally known to be the same person who executed the foregoing instrument of writing and duly acknowledged the execution of the same. In testimony whereof I have hereunto set my hand and affixed my notarial seal the day and year above written.

By: Carolyn R. Owen Notary Public
Carolyn Owen
My Commission Expires My Appointment Expires May 27, 1981

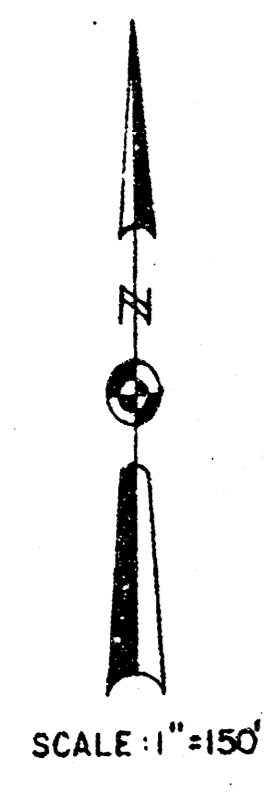
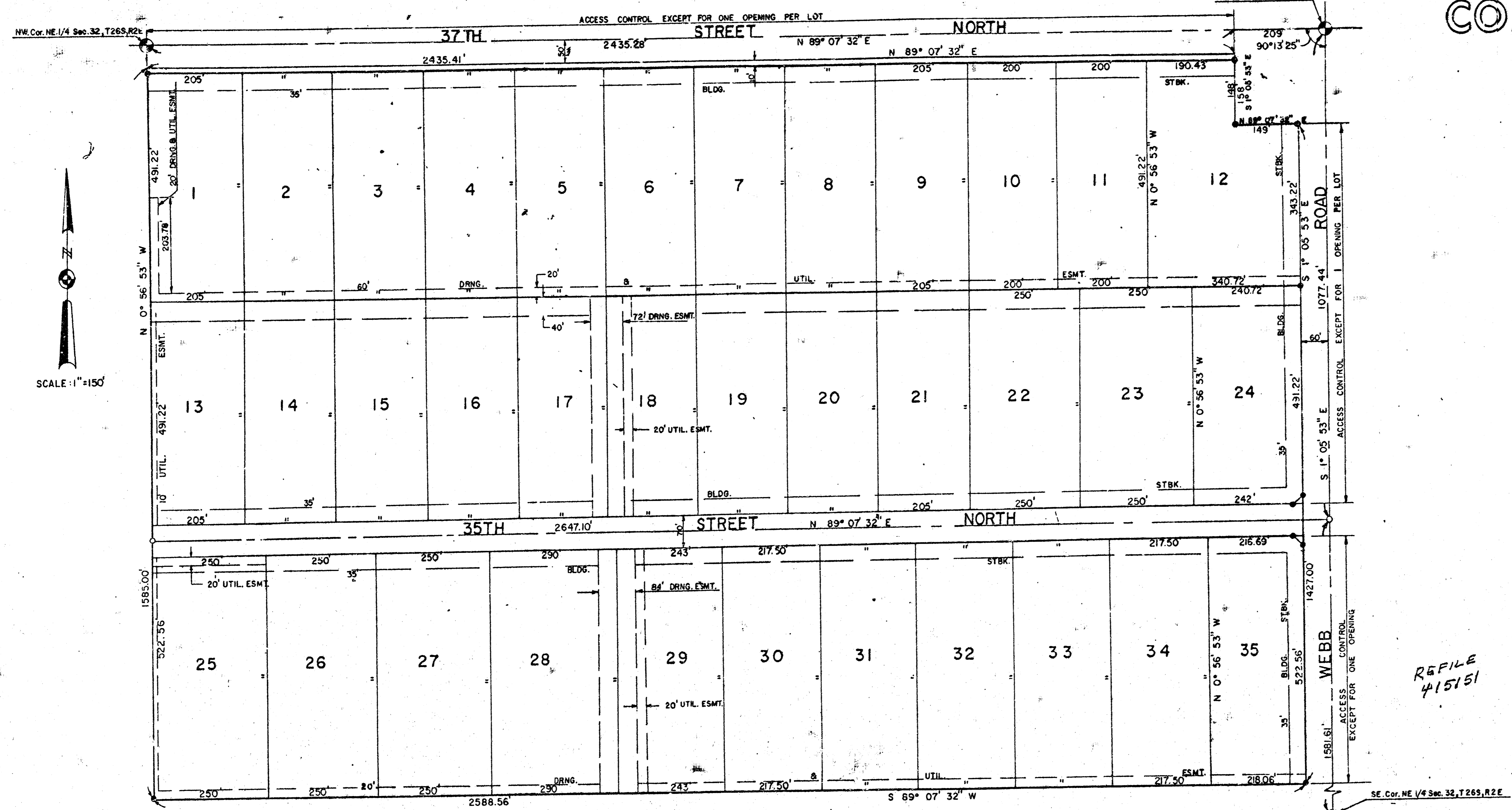
We, the Citibank, N.A., New York City, New York, mortgagees on the above described property do hereby consent to the plat of "Comotara Industrial Park Fourth Addition".

The Citibank, N.A., New York, New York.
By: Robert R. Fox
Robert R. Fox
Attorney in Fact for Citibank, N.A.

Be it remembered on this 27th day of September, 1978 before me, a Notary Public in and for said State and County, came the Citibank, N.A., New York City, New York, by Robert R. Fox, Attorney in Fact for Citibank, N.A., to me personally known to be the same person who executed the foregoing instrument of writing and duly acknowledged the execution of the same. In testimony whereof, I have hereunto set my hand and affixed my notarial seal the day and year above written.

By: Carolyn R. Owen Notary Public
Carolyn R. Owen
My Commission Expires My Appointment Expires May 27, 1981

Restrictive Covenants F-334 pg. 1478
Vacation Order F-811 pg. 799
Vacation Order F-934 pg. 1649



This plat of "Comotara Industrial Park Fourth Addition" has been submitted to and approved by the Wichita-Sedgwick County Metropolitan Area Planning Commission, Wichita, Kansas.

Dated this 22nd day of June, 1978.
Wichita-Sedgwick County Metropolitan Area Planning Commission

By: Jerry Greider Vice-Chairman
Robert A. Lakin Secretary

This plat approved and all dedications shown hereon, if any, accepted by the City Commission of the City of Wichita, Kansas this 16th day of OCTOBER, 1978.

By: Connie A. Peters Mayor
Donald C. Glick City Clerk

Entered on transfer record this 16th day of October, 1978.

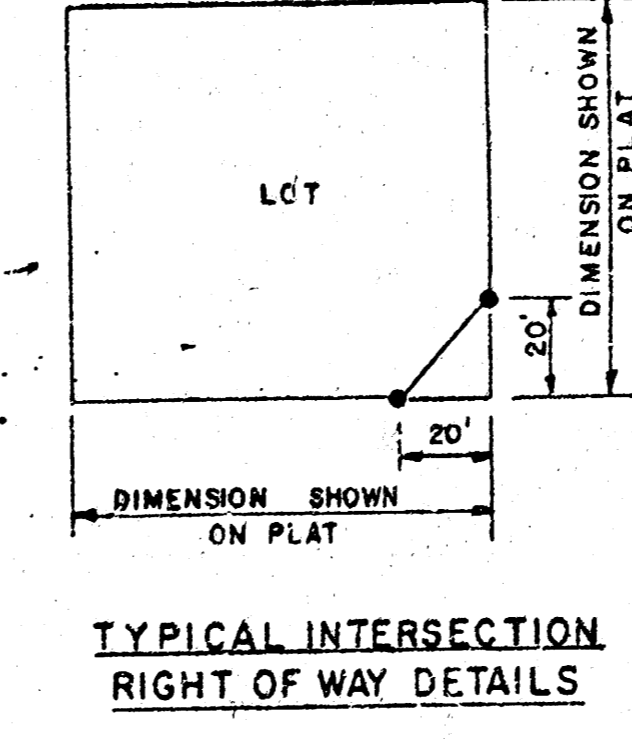
By: Stephen D. Wright County Clerk
Pat Kettler Deputy

This plat approved and all dedications shown hereon, if any, accepted by the Board of County Commissioners of Sedgwick County, Kansas this 16th day of OCTOBER, 1978.

By: Everett W. Patrick Chairman
Tom Scott Commissioner
John Hall Commissioner
Attest: Stephen D. Wright County Clerk
Pat Kettler Ass't.

State of Kansas, County of Sedgwick, SS:
This is to certify that this instrument was filed for record in the Register of Deeds Office at 3:00 P.M. on the 16th day of OCTOBER, 1978.

By: Bette F. McCart Register of Deeds
Pat Kettler Deputy



#409014

STATE OF KANSAS
SEDGWICK COUNTY

This is to certify that this plat was refiled for record in the office of the Register of Deeds this 27th day of NOVEMBER, 1978 to change the legal description in the Surveyor's Certificate from "Beginning at the northwest corner of Lot 2, Block 3 of Comotara Business Park Addition" to "Beginning at a point on the west line of the northeast quarter, Section 32, T 26 S, R 2 E of the 6th P.M., 50.00 feet south of the northwest corner of said quarter".

By: Steven E. Anderson
Steven E. Anderson
VAN DOREN-HAZARD-STALLINGS
Bette F. McCart
Bette F. McCart
Register of Deeds
Pat Kettler
Pat Kettler
Deputy

REFILE 20.00
20.00

H-1 3-22
81 03 02