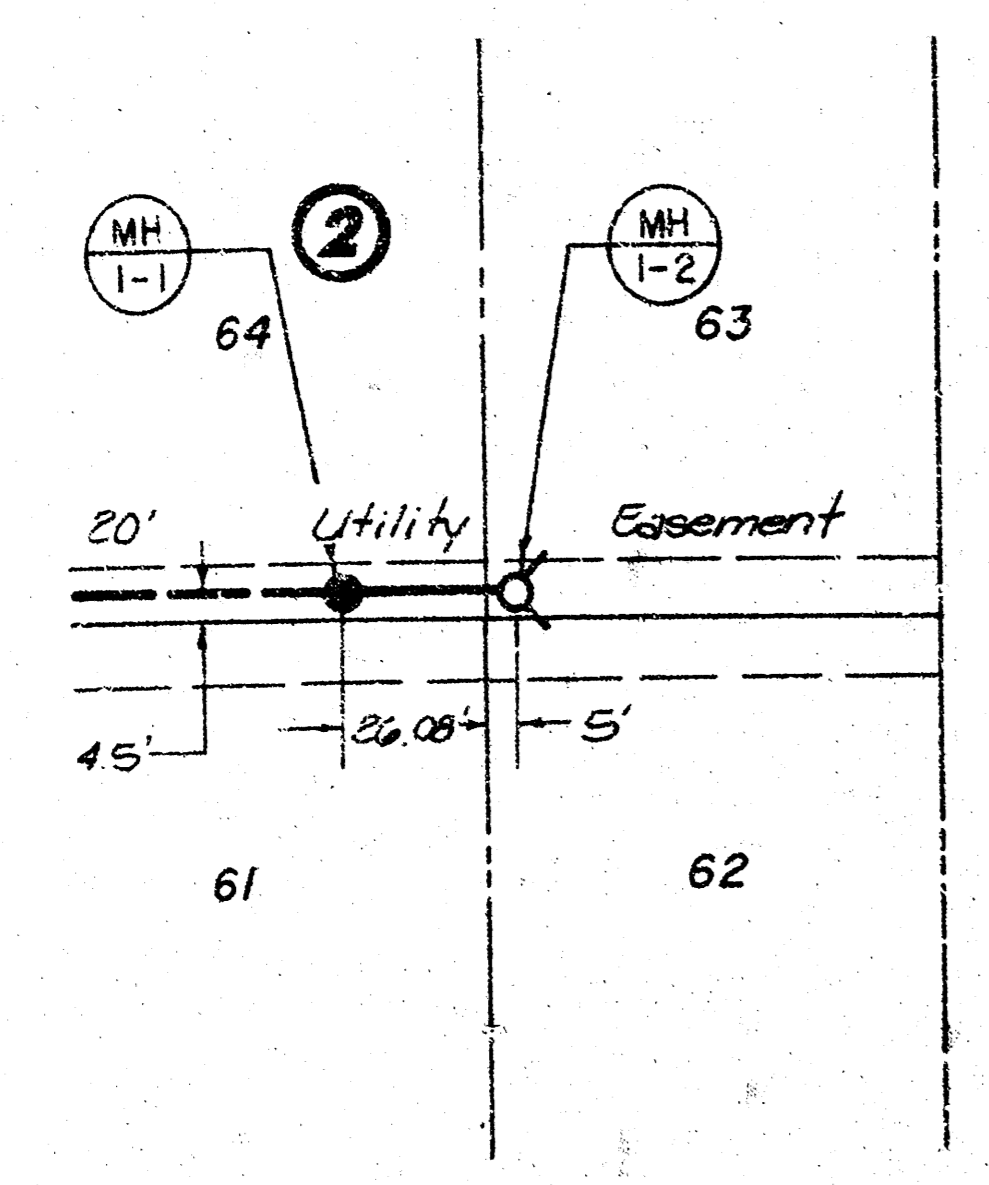


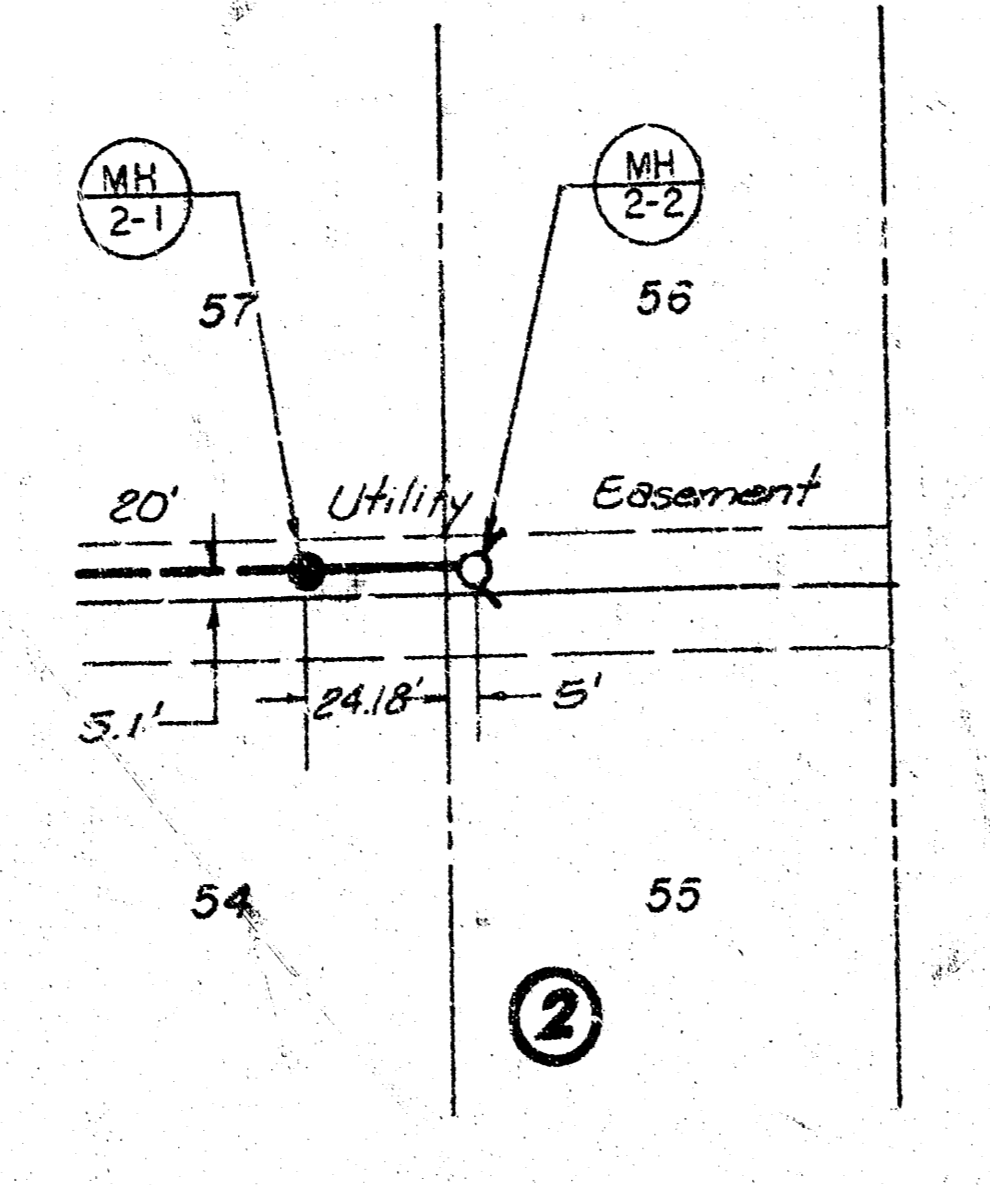
COTTONWOOD VILLAGE FIFTH ADD.
PROJECT NO. 468-76-245-80000-000-000-008

PRIVATE SANITARY SEWER EXTENSION
TO SERVE ADDITIONAL LOTS IN THE
COTTONWOOD VILLAGE FIFTH ADD.,
WEST OF ROCK ROAD ALONG 32ND
STREET NORTH.

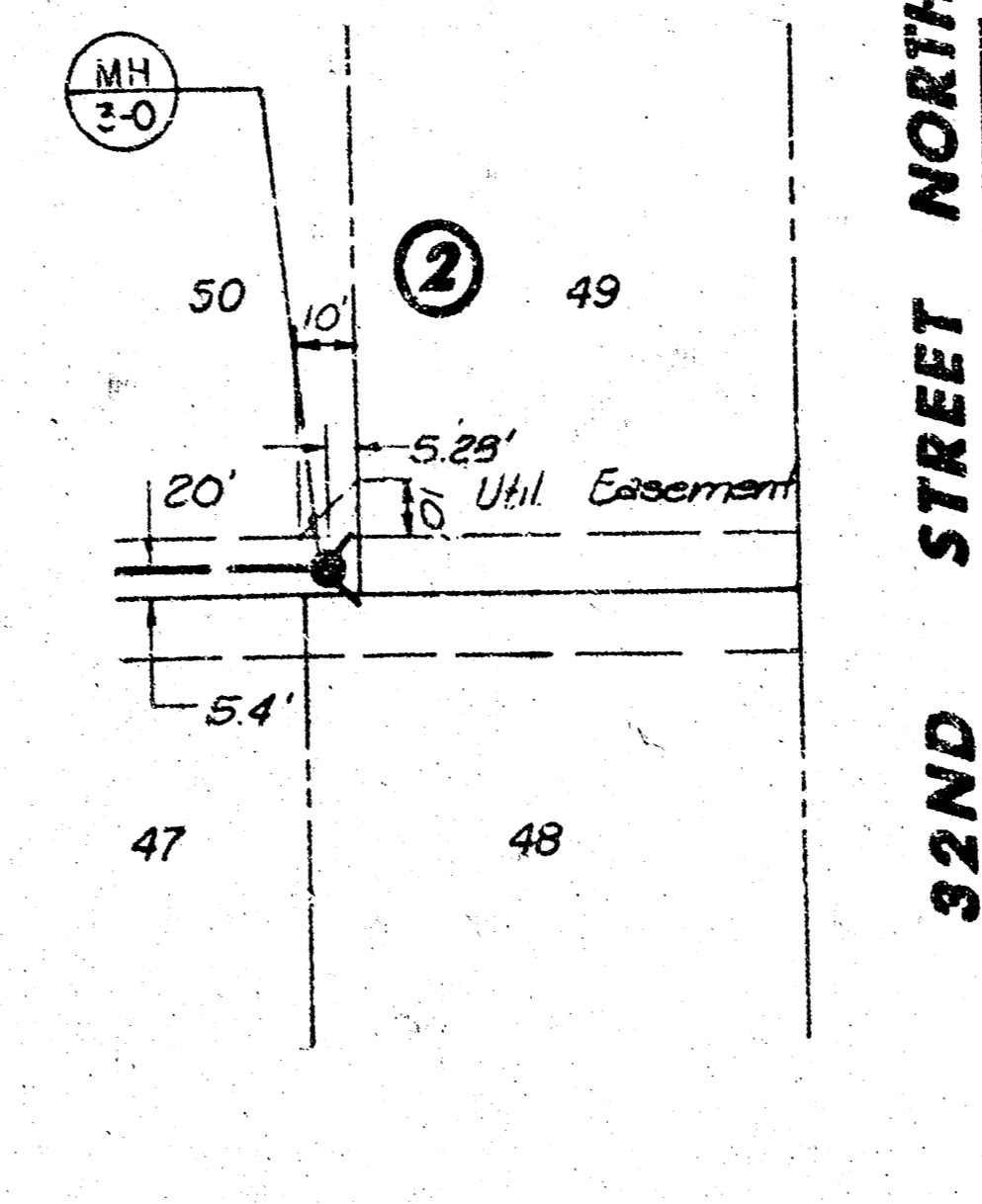
Scale: 1" = 40' Horiz.
1" = 5' Vert.



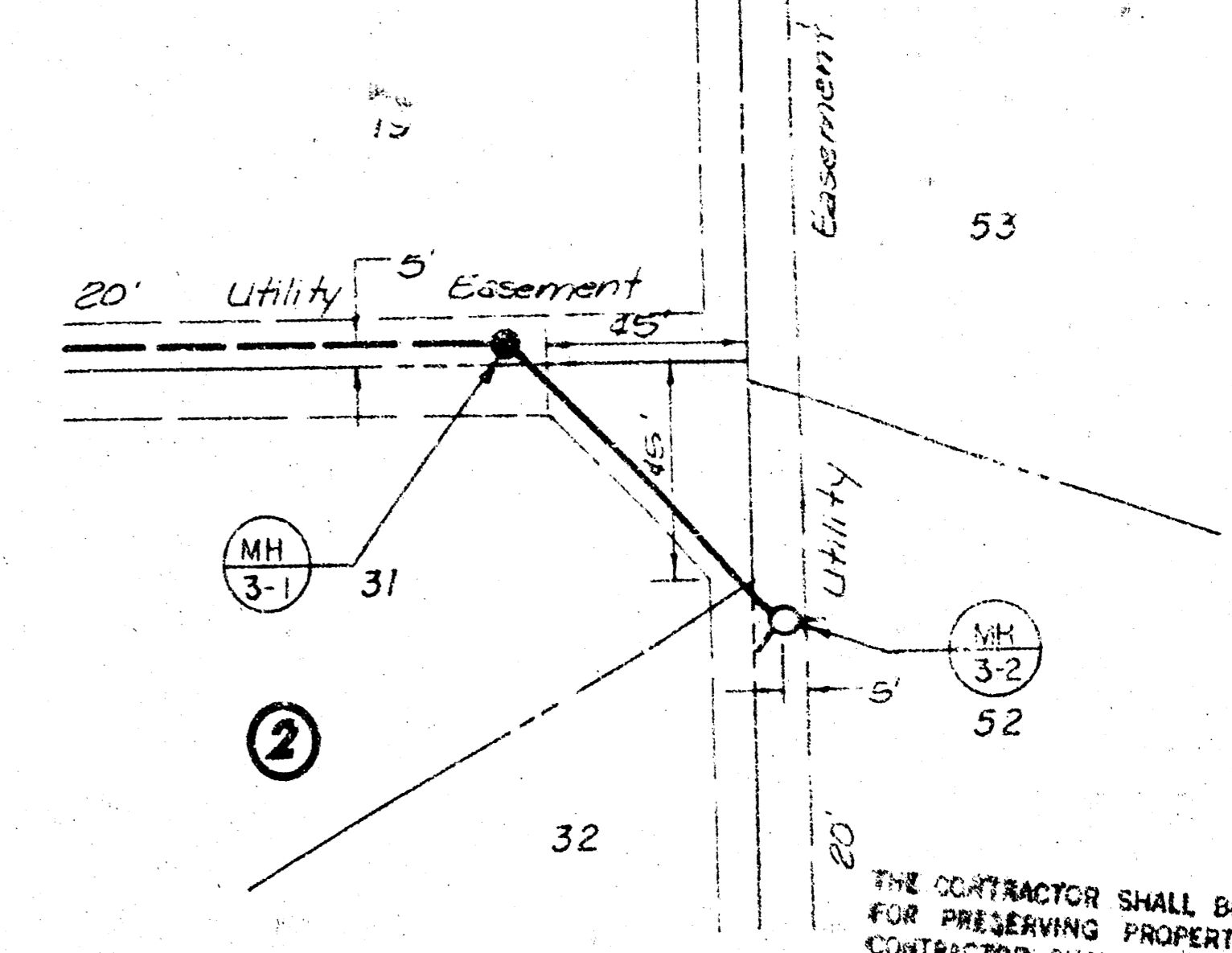
Scale: 1" = 40' Horiz.
1" = 5' Vert.



Scale: 1" = 40' Horiz.
1" = 5' Vert.



Scale: 1" = 40' Horiz.
1" = 5' Vert.



THE CONTRACTOR SHALL BE RESPONSIBLE FOR PRESERVING PROPERTY IRONS. THE CONTRACTOR SHALL BE REQUIRED TO RE-ESTABLISH ANY PROPERTY IRONS WHICH ARE DAMAGED OR DESTROYED BY HIS CONSTRUCTION OPERATIONS. SUCH IRONS SHALL BE RE-ESTABLISHED BY A LICENSED LAND SURVEYOR OR A LICENSED PROFESSIONAL ENGINEER IN ACCORDANCE WITH STATE LAWS.

PLAN - LINE 1

PLAN - LINE 2

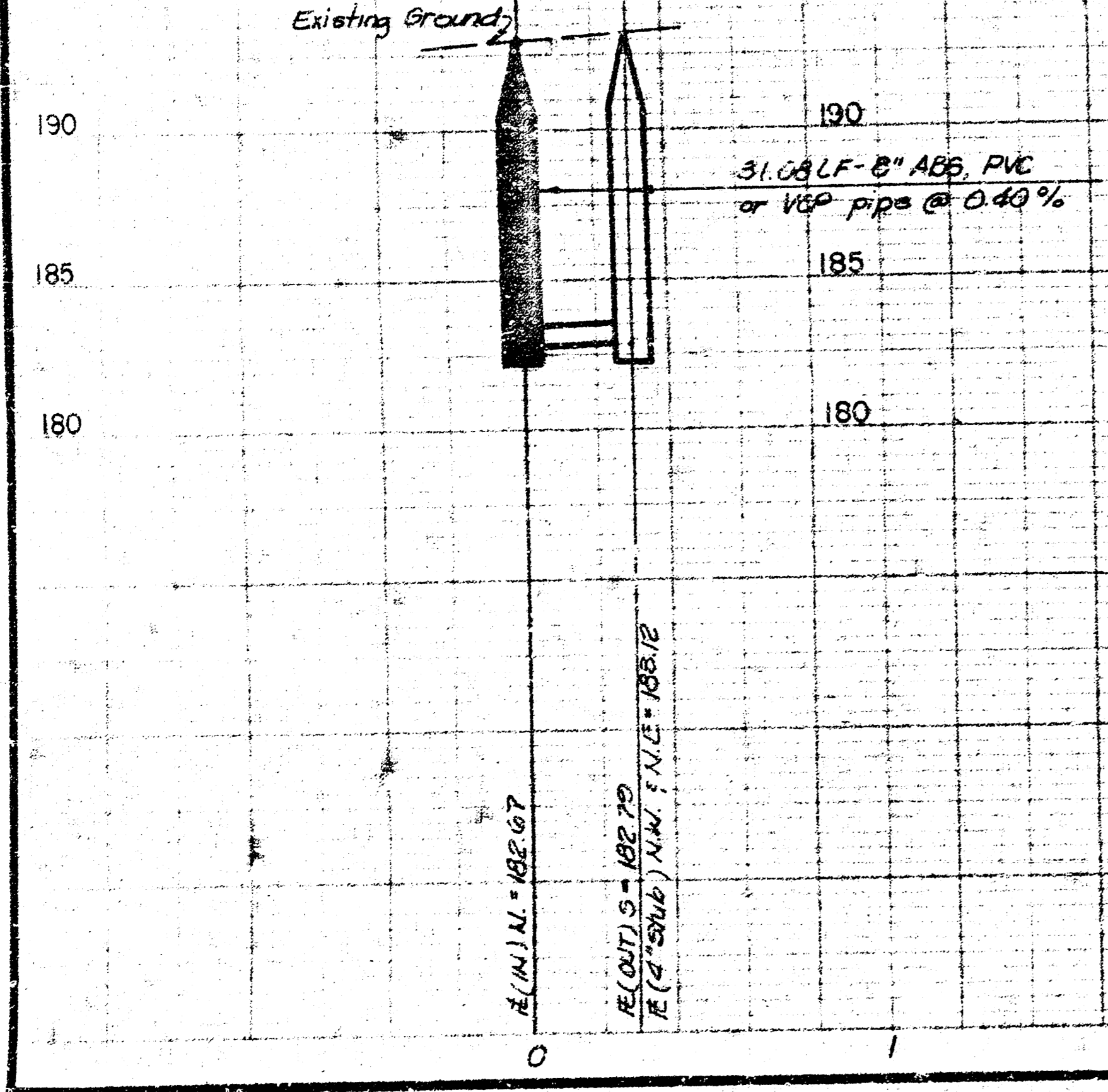
PLAN - EXIST. MH

PLAN - LINE 3

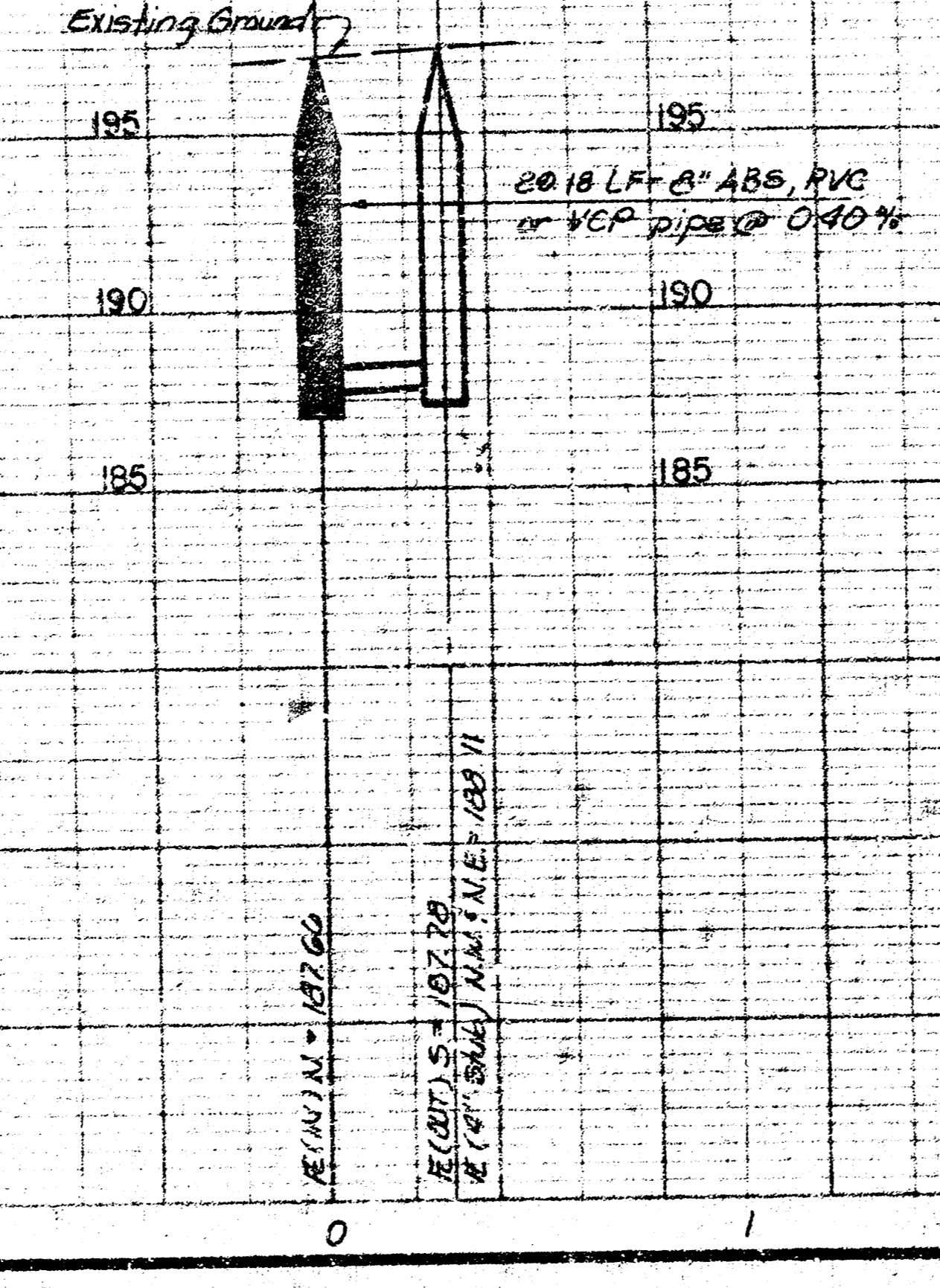
BENCHMARK: STP SPK. E.
F.C. OF E. POLE OF 4TH
K.G. & E. DBL. POLE
NORTH OF 29TH ST. ALONG
CENTER OF SEC. 6.
ELEV. = 190.07

NOTE TO CONTRACTOR
This project will be constructed under the supervision of the CITY ENGINEER and conforming to the SPECIFICATIONS of the CITY OF WICHITA. The CONTRACTOR will prepare the City of Wichita for an inspection.

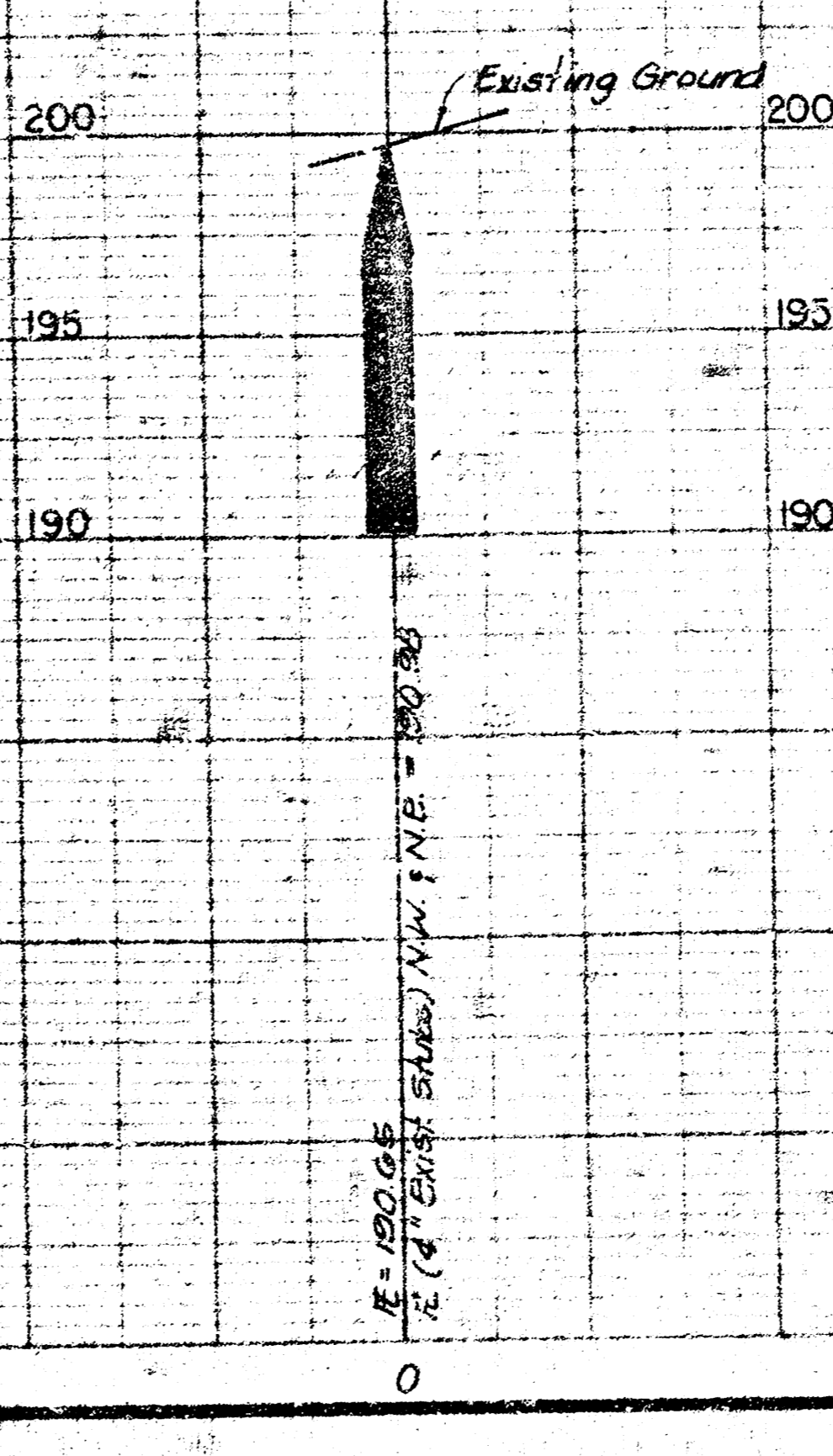
PROFILE - LINE 1



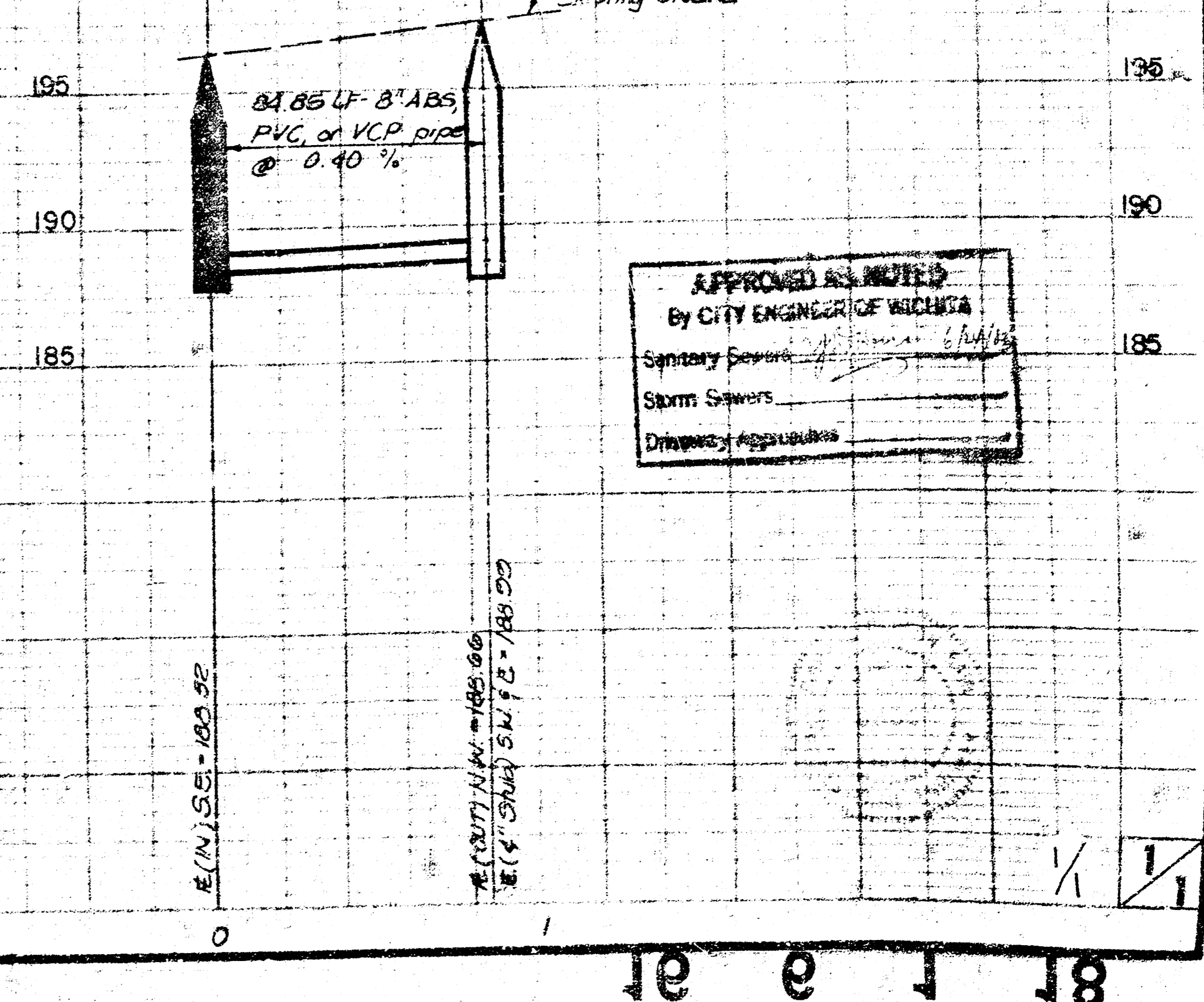
PROFILE - LINE 2



PROFILE - EXIST. MH



PROFILE - LINE 3



APPROVED AS NOTED
By CITY ENGINEER OF WICHITA
Sanitary Sewers
Storm Sewers
Drainage Apparatus