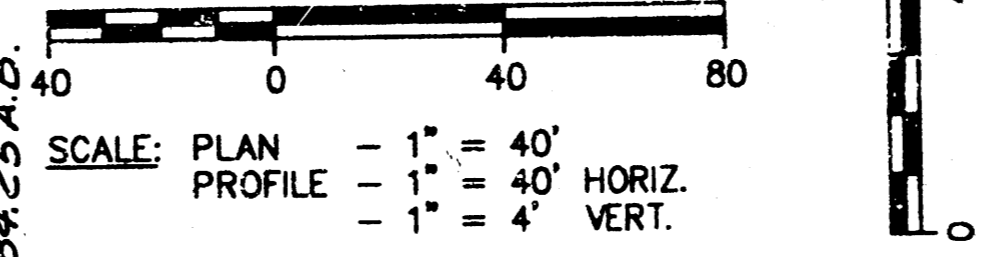
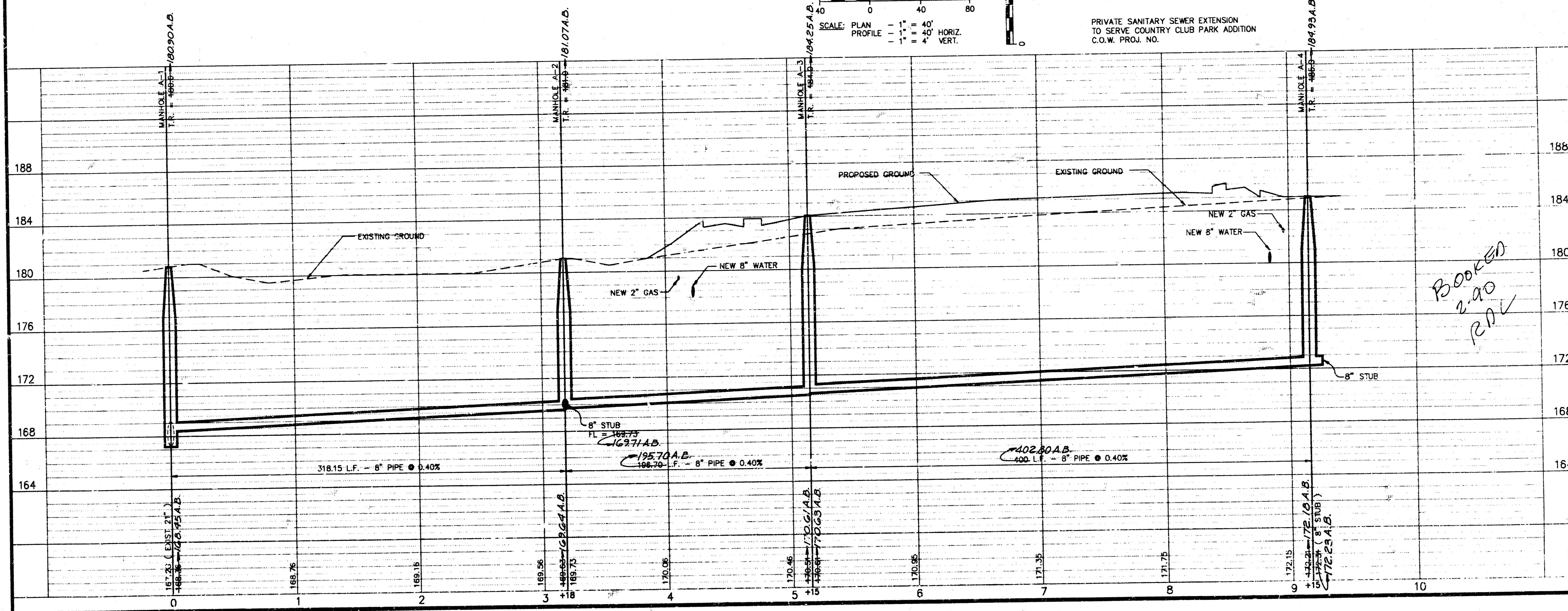
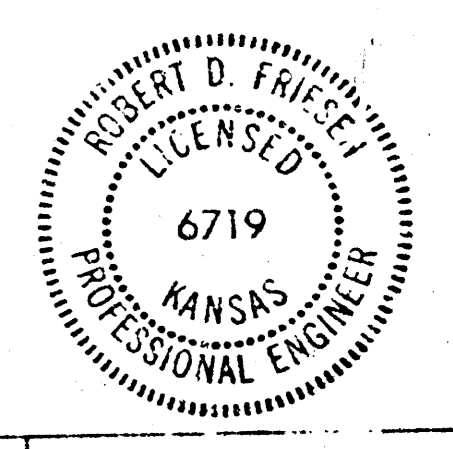


**A SANITARY SEWER PLAN AND PROFILE**



PRIVATE SANITARY SEWER EXTENSION  
TO SERVE COUNTRY CLUB PARK ADDITION  
C.O.W. PROJ. NO.



*BOOKED  
2-90  
RDV*

**KEY MAP**

COUNTRY CLUB PARK - BUILDING ONE  
SANITARY SEWER EXTENSION IMPROVEMENTS

AS BUILT:  
11-89

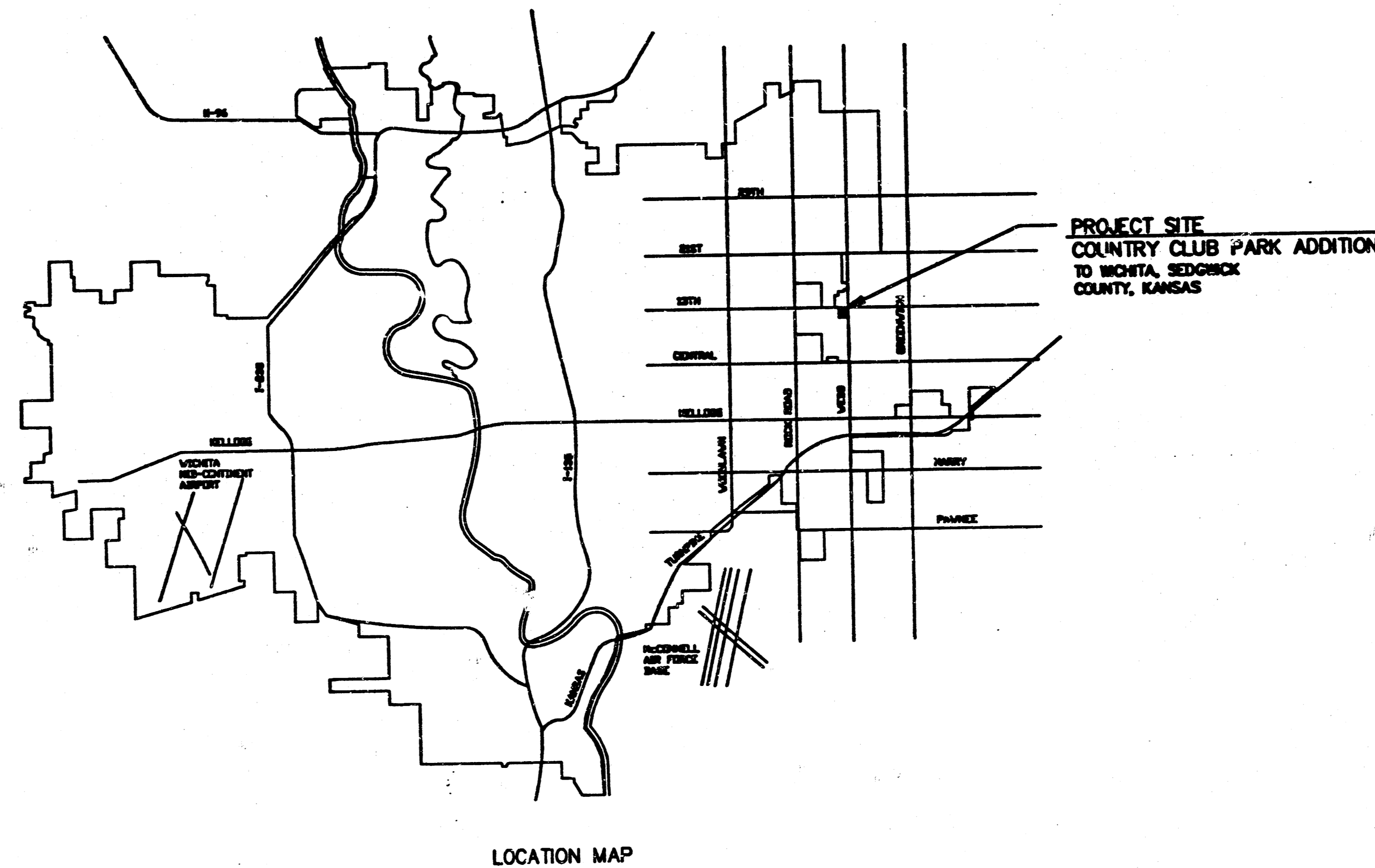
DESIGNED BY: R.D.F.  
DRAWN BY: R.D.F.  
JOB NO. 682.100  
DATE: JUNE 20, 1989

MICHAEL E. JANDEBAK, P.E. - CITY ENGINEER  
INDEX CODE: 219PPP6607853

# CONSTRUCTION PLANS FOR SANITARY SEWER EXTENSION IMPROVEMENTS TO SERVE COUNTRY CLUB PARK ADDITION

TO  
**THE CITY OF WICHITA,**  
SEDGWICK COUNTY, KANSAS  
MICHAEL E. LINDEBAK, P.E. - CITY ENGINEER

Approved as noted  
By CITY ENGINEER OF WICHITA  
Sanitary Sewers Sept. 2-10-89  
Storm Sewers \_\_\_\_\_  
Driveway Approaches \_\_\_\_\_  
Water Mains \_\_\_\_\_  
Paving \_\_\_\_\_

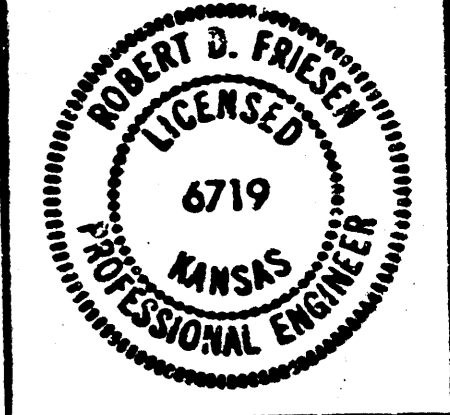


**NOTE TO CONTRACTOR**  
INSPECTION AND TESTING FOR THIS PROJECT IS TO BE PROVIDED BY A LICENSED CONSULTING ENGINEERING FIRM UNDER CONTRACT WITH THE OWNER/DEVELOPER. SAID INSPECTION TO BE IN ACCORDANCE WITH THE CITY OF WICHITA STANDARD CONSTRUCTION ENGINEERING PRACTICES AND CERTIFIED BY A LICENSED PROFESSIONAL ENGINEER. NO WORK SHALL BE PERFORMED IN DEDICATED EASEMENTS OR THE PUBLIC RIGHT-OF-WAY BY THE CONTRACTOR WITHOUT SUCH INSPECTION NOR SHALL ANY WORK BE COMMENCED IN DEDICATED EASEMENTS OR PUBLIC RIGHT-OF-WAY WITHOUT WRITTEN AUTHORIZATION BY THE CITY ENGINEER.

INSPECTION AND TESTING FOR THIS PROJECT IS TO BE PROVIDED BY A LICENSED CONSULTING ENGINEERING FIRM CONTRACTED BY THE OWNER/DEVELOPER. SAID INSPECTION TO BE IN ACCORDANCE WITH THE CITY OF WICHITA STANDARD CONSTRUCTION ENGINEERING PRACTICES AND CERTIFIED BY A LICENSED PROFESSIONAL ENGINEER. NO WORK SHALL BE PERFORMED IN DEDICATED EASEMENTS OR THE PUBLIC RIGHT-OF-WAY BY THE CONTRACTOR WITHOUT SUCH INSPECTION NOR SHALL ANY WORK BE COMMENCED IN DEDICATED EASEMENTS OR RIGHT-OF-WAY WITHOUT WRITTEN AUTHORIZATION BY THE CITY ENGINEER.

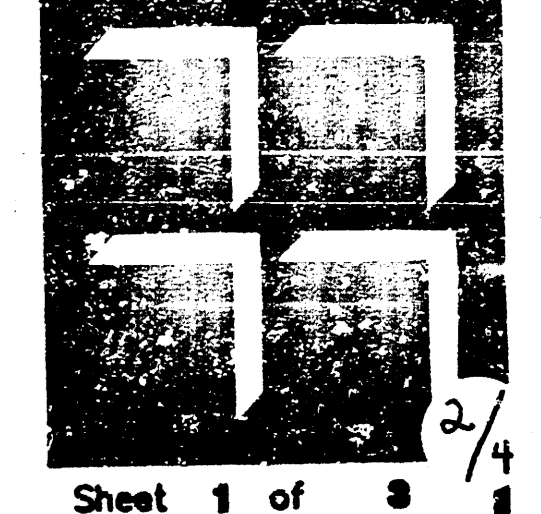
INDEX CODE 219PPS607853<sup>61</sup>  
**JUNE, 1989**  
PLANS PREPARED BY

**GOSSEN LIVINGSTON ASSOCIATES, P.A.**  
ARCHITECTS PLANNERS ENGINEERS (316) 265-9367  
420 S. EMPORIA, WICHITA, KANSAS 67020



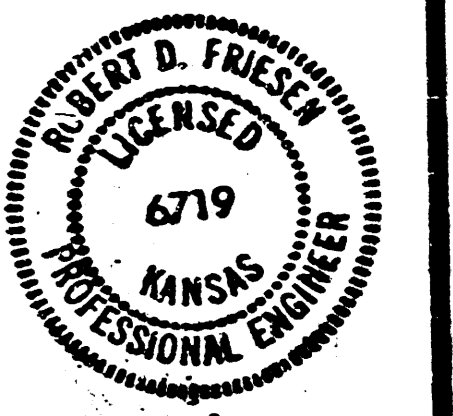
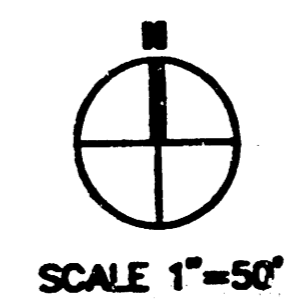
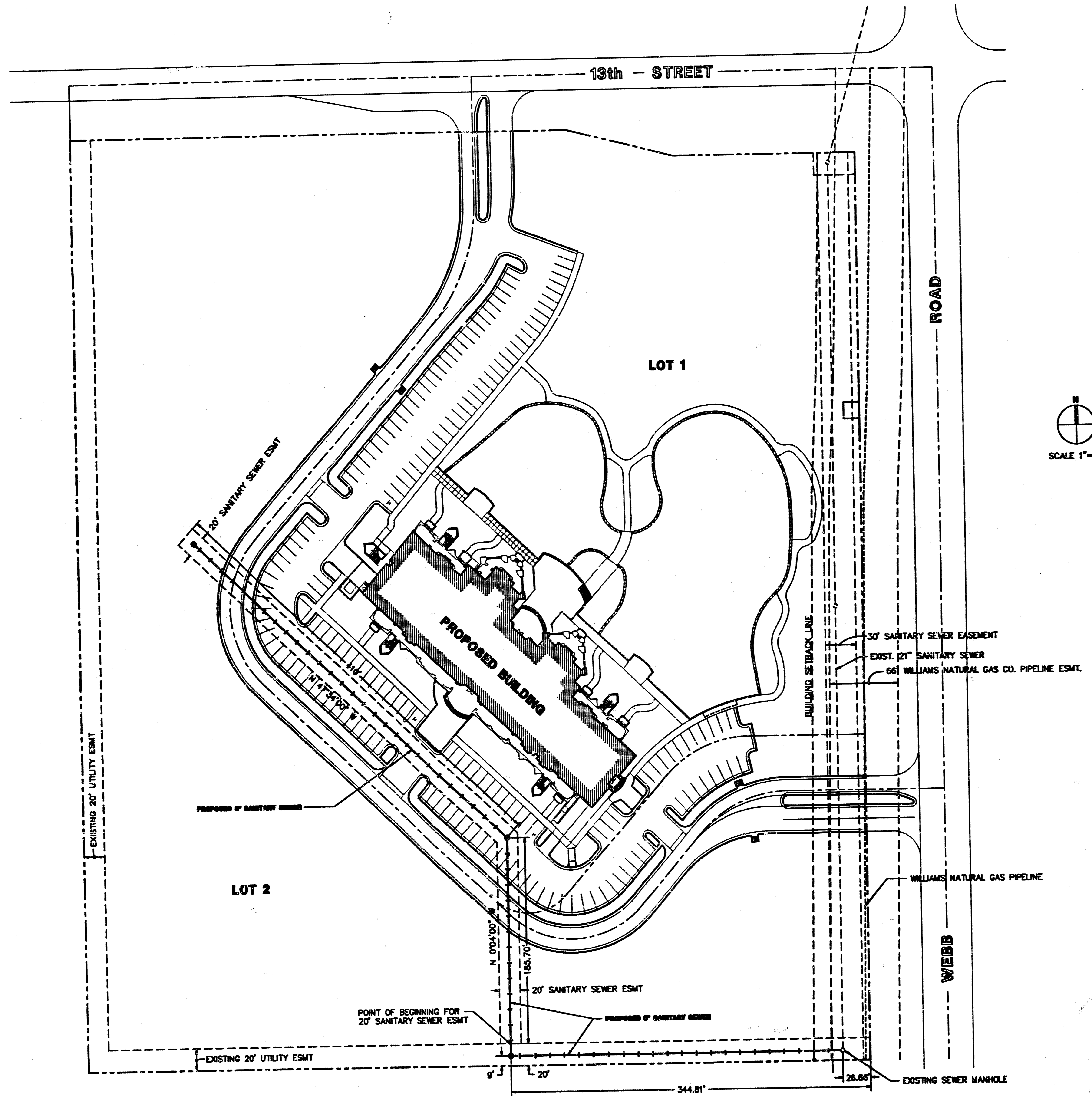
**COUNTRY CLUB PARK - BUILDING ONE**  
SANITARY SEWER EXTENSION IMPROVEMENTS  
**KEY MAP**  
MICHAEL E. LINDEBAK, P.E. - CITY ENGINEER  
INDEX CODE 219PPS607853

GOSSEN LIVINGSTON ASSOCIATES, P.A.  
Designed By RLF  
Drawn By RLF  
Job No. 882.100  
Date JUNE 20, 1989



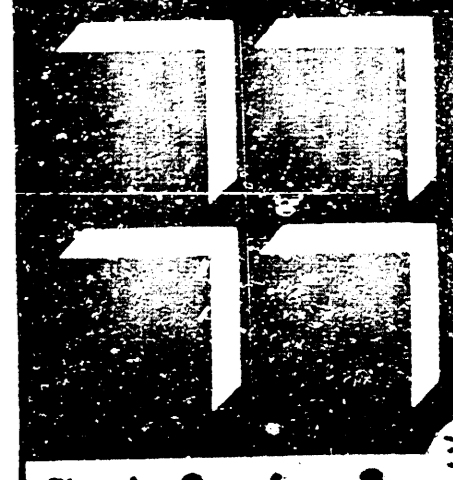
# COUNTRY CLUB PARK ADDITION

WICHITA, SEDGWICK COUNTY, KANSAS

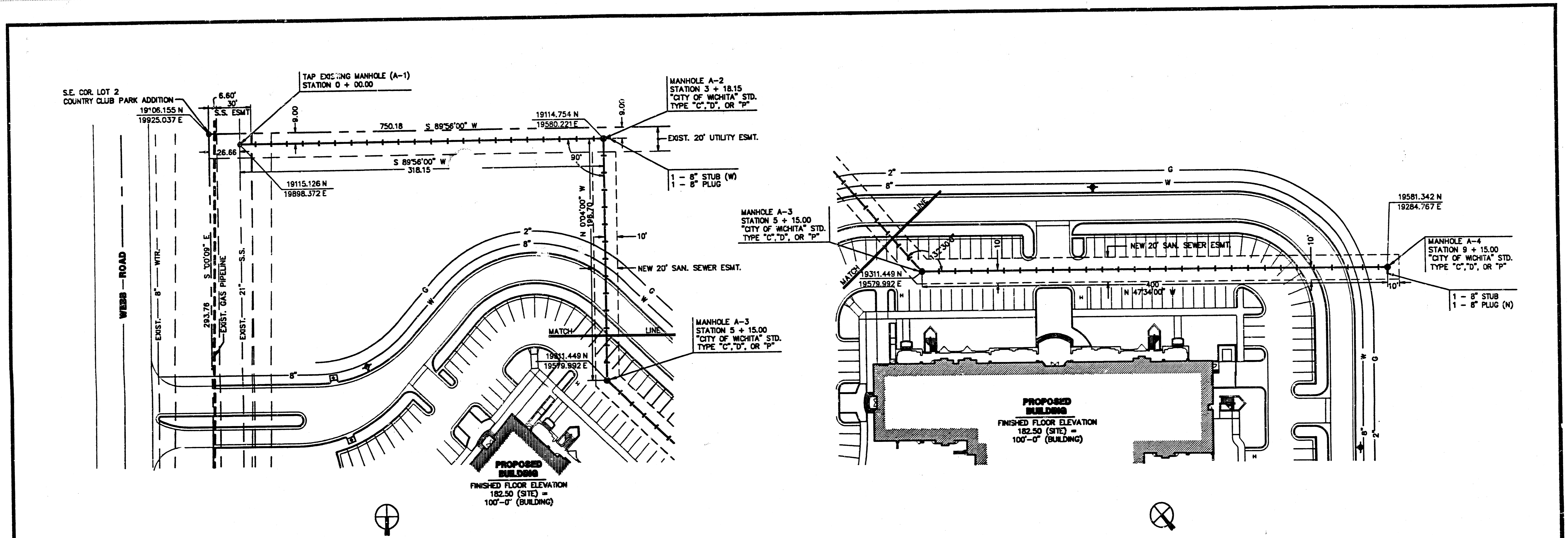


**COUNTRY CLUB PARK - BUILDING ONE**  
 SANITARY SEWER EXTENSION IMPROVEMENTS  
**KEY MAP**  
 MICHAEL E. LINDEBAK, P.E. - CITY ENGINEER  
 INDEX CODE 218PP807853

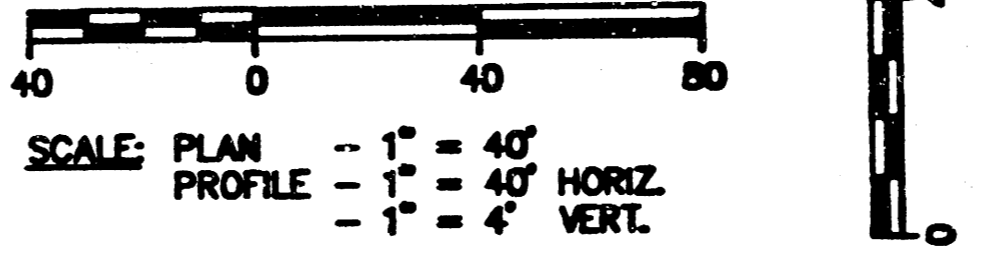
GOSSEN, LIVINGSTON  
 ASSOCIATES, P.A.  
 400 E. WYOMING, WICHITA, KANSAS 67202  
 (316) 261-1111  
 Designed By RLF  
 Drawn By RLF  
 Job No. 682.100  
 Date JUNE 20, 1989



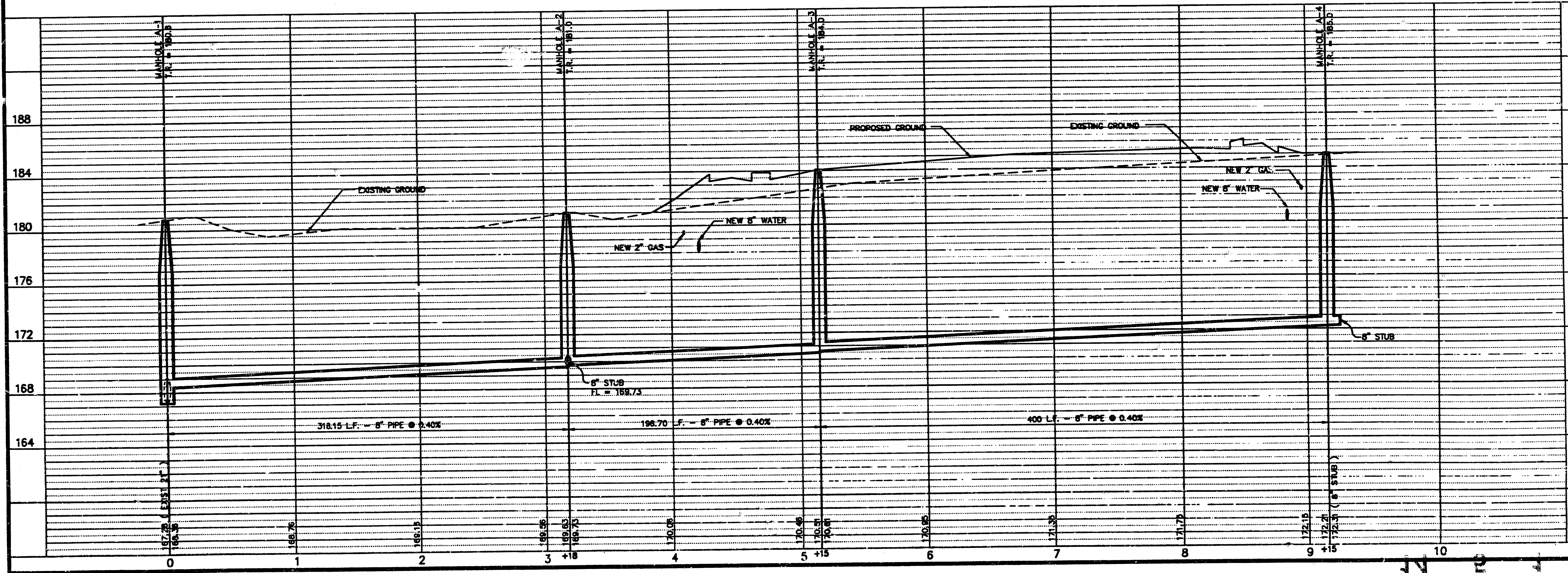
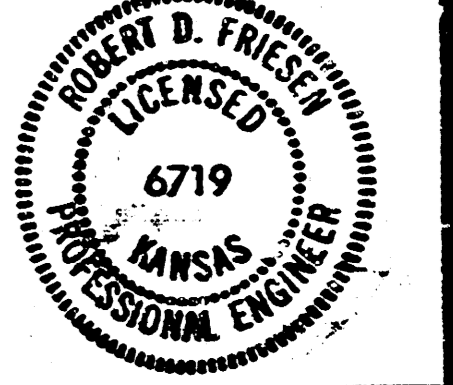
FILMED FROM THE BEST AVAILABLE COPY



**A SANITARY SEWER PLAN AND PROFILE**



PRIVATE SANITARY SEWER EXTENSION  
 TO SERVE COUNTRY CLUB PARK ADDITION  
 C.O.W. PROJ. NO.



**KEY MAP**  
 COUNTRY CLUB PARK - BUILDING ONE  
 SANITARY SEWER EXTENSION IMPROVEMENTS  
 MICHAEL E. UNDERAK, P.E. - CITY ENGINEER  
 INDEX CODE 218PP5607853

COSSON LIVINGSTON ASSOCIATES P.A.  
 Designed By RDF  
 Drawn By RDF  
 Job No. 682.100  
 Date JUNE 20, 1989



Sheet 3 of 3