

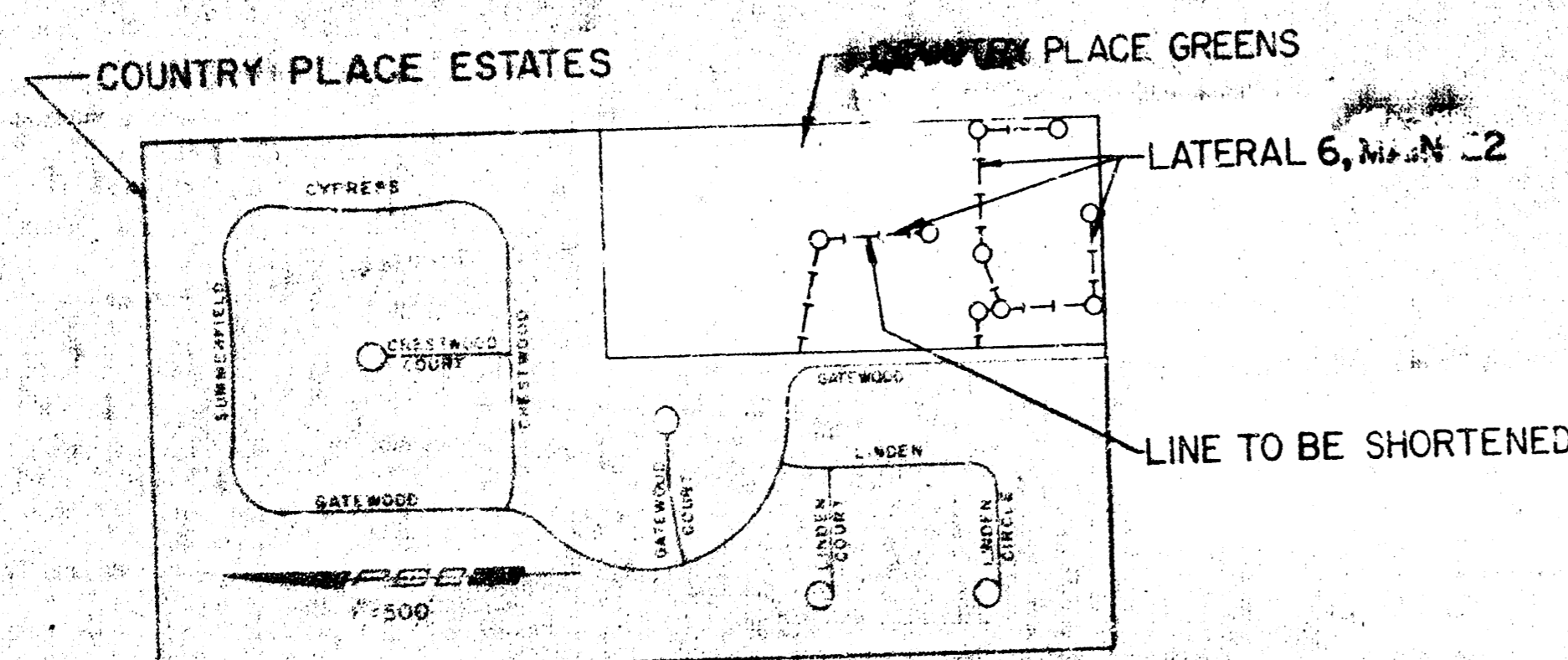
CONSTRUCTION PLANS FOR SEWER RELOCATION LOT 48 COUNTRY PLACE ESTATES

THE CITY OF WICHITA,
SEDGWICK COUNTY, KANSAS

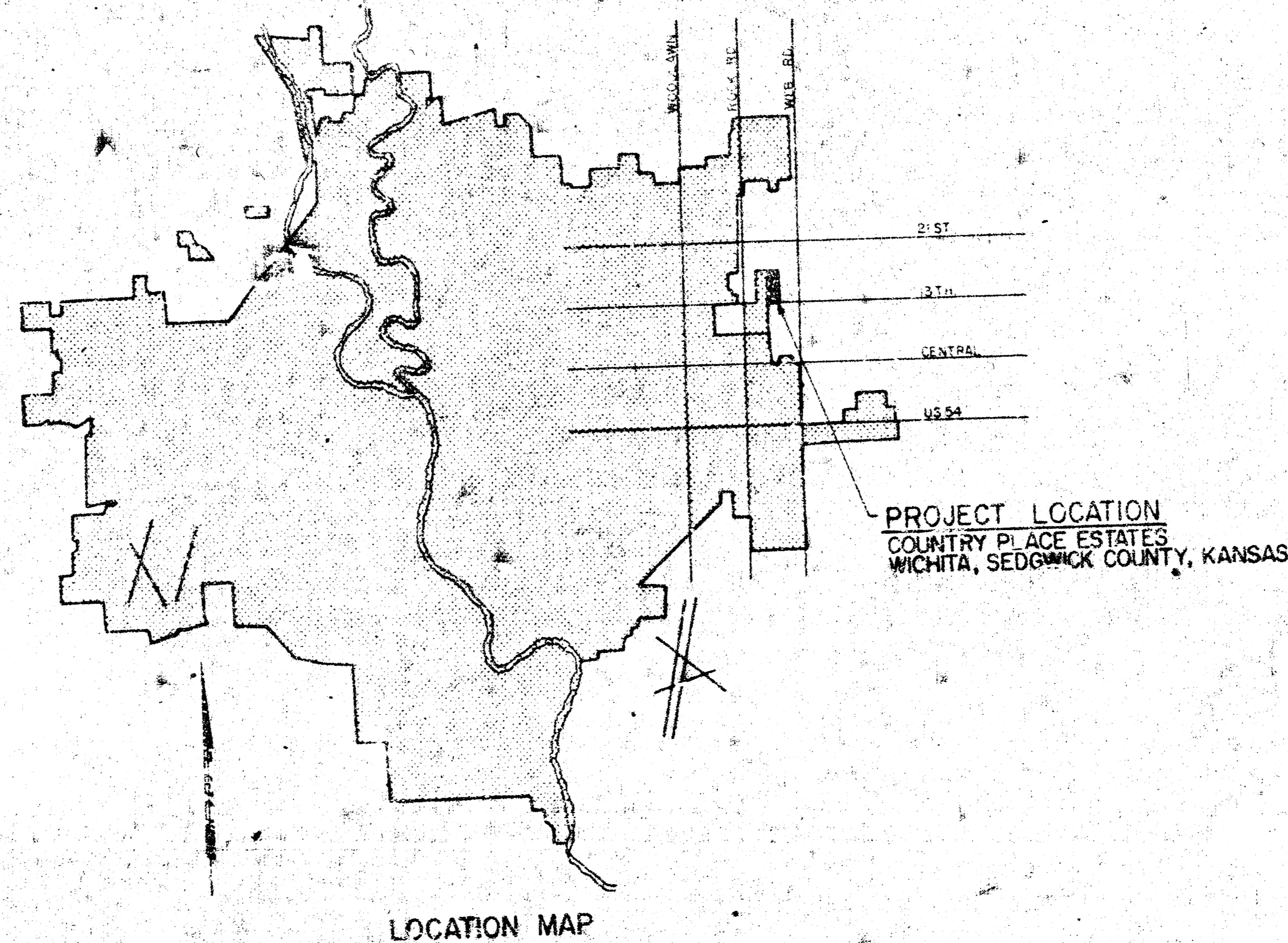
INDEX OF SHEETS

SHEET NO. 1 TITLE SHEET
SHEET NO. 2 SEWER RELOCATION PLAN

- GENERAL NOTES**
1. ALL CHARACTERISTICS AND MATERIALS TO COMPLY WITH CITY OF WICHITA STANDARD SPECIFICATIONS AND STANDARDS.
 2. ALL WORK SHALL BE INSPECTED BY THE DEPARTMENT OF PUBLIC WORKS ENGINEERING DIVISION.
 3. ALL ELEVATIONS (WHEN APPLICABLE) ARE BASED ON CITY OF WICHITA DATUM (CITY DATUM).
 4. FIELD ENGINEER SHALL VERIFY ALL ELEVATIONS AND GRADES AS SHOWN BY THE REVISIONS.
- BENCH MARK**
- B.M. - CITY OF WICHITA LEASE COP. IS EAST AND 100' NORTH OF INTERSECTION WEBB ROAD AND 13th ST. NORTH.
- ELL 11-18-80



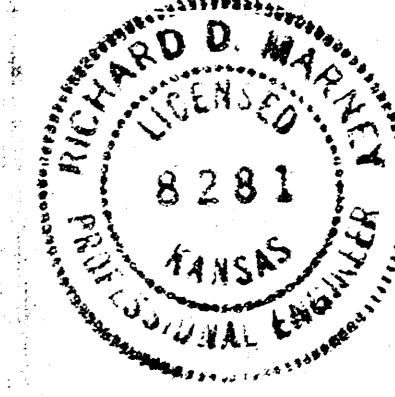
LEGEND
EXISTING 8" SANITARY SEWER

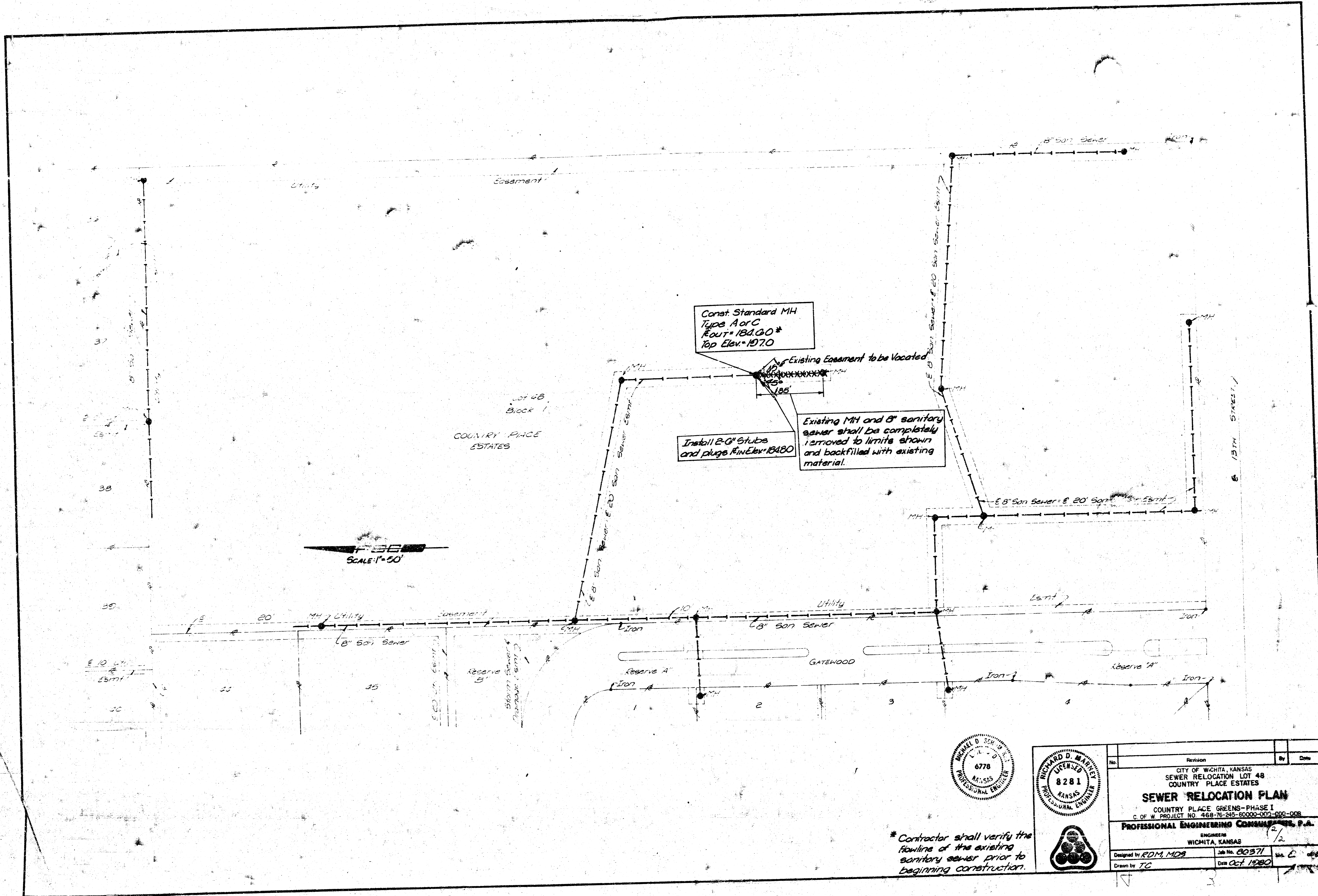


CITY OF WICHITA PROJECT NO. 468-76-245-80000-000-000-008

OCTOBER 1980

PLANS PREPARED BY
PROFESSIONAL ENGINEERING CONSULTANTS, P.A.
ENGINEERS
WICHITA, KANSAS



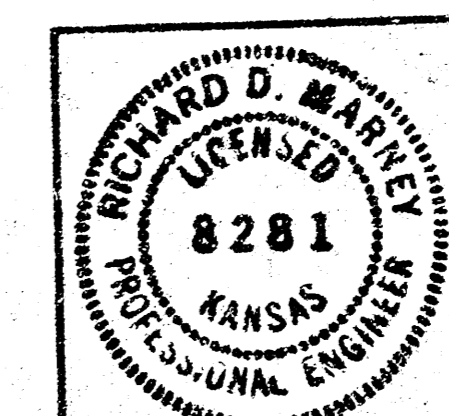
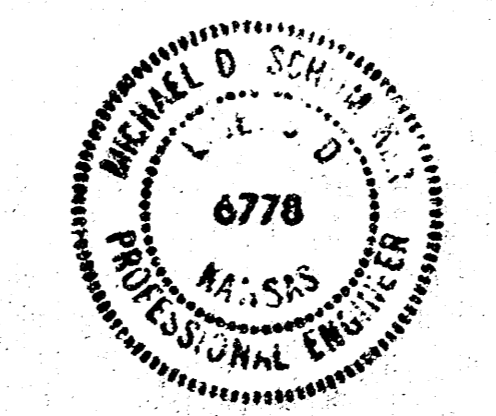


Const. Standard MH
Type A or C
Rout = 184.80*
Top Elev. = 187.0

Install 2" Stubs
and plugs Fin Elev. = 184.80

Existing MH and 8" sanitary
sewer shall be completely
removed to limits shown
and backfilled with existing
material.

SCALE: 1" = 50'



* Contractor shall verify the
flowline of the existing
sanitary sewer prior to
beginning construction.

No.	Revision	By	Date
CITY OF WICHITA, KANSAS SEWER RELOCATION LOT 48 COUNTRY PLACE ESTATES SEWER RELOCATION PLAN COUNTRY PLACE GREENS - PHASE I C. OF W. PROJECT NO. 468-76-245-60000-001-000-008 PROFESSIONAL ENGINEERING CONSULTANTS, P.A. ENGINEERS WICHITA, KANSAS			
Designed by	RDM, MDS	Job No.	60371
Drawn by	TC	Date	OCT 1980