

DICK'S SPORTING GOODS - WICHITA, KANSAS

TOWNE WEST SQUARE 2nd ADDITION, LOT 9
CITY OF WICHITA, SEDGWICK COUNTY, KANSAS
SANITARY SEWER PLANS

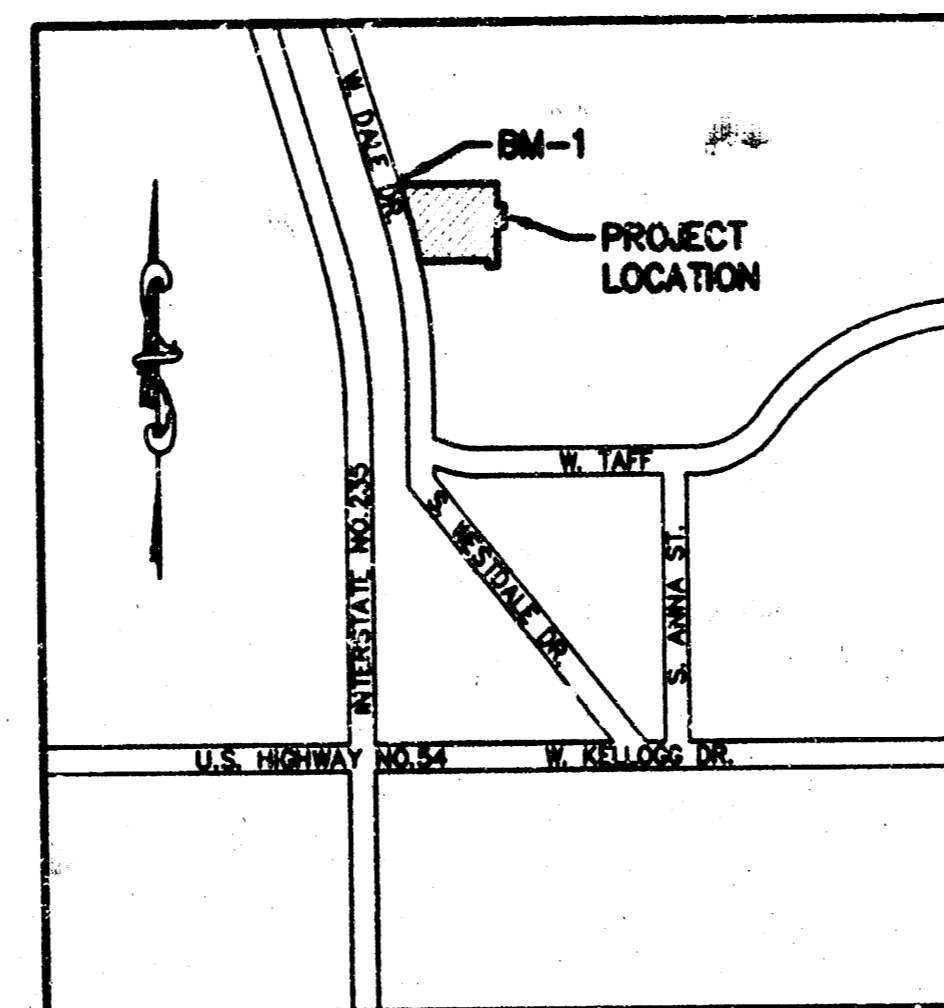
PRIVATE PROJECT NO:1277PPS (607861)

INDEX TO SHEETS

- TITLE SHEET
- GENERAL LAYOUT PLAN
- LINE "A" - PLAN & PROFILE
- DETAIL SHEET
- DETAIL SHEET

SUMMARY OF QUANTITIES

NO.	ITEM	UNITS	PROPOSED	AS-BUILT
1.	REMOVALS	L.S.	1	
2.	CONNECT TO EXISTING MANHOLE	EA.	1	
3.	INSTALL STANDARD MANHOLE OVER EXIST. LINE	EA.	1	
4.	TYPE "P" STANDARD MANHOLE	EA.	2	
5.	EXTRA DEEP MANHOLE	V.F.	2	
6.	8" PVC PIPE (SDR 35)	L.F.	438.8	



VICINITY MAP:
NOT TO SCALE

UTILITIES

THE NAME AND NUMBER OF UTILITY COMPANIES AFFECTED BY THIS PROJECT ARE AS FOLLOWS:

- CITY OF WICHITA DEPARTMENT OF WATER AND SEWER(316) 288-4504
- SOUTHWESTERN BELL TELEPHONE(316) 636-9349
- WEST STAR ENERGY(800) 794-4780
- KANSAS GAS SERVICE(800) 794-6101
- ELECTRIC - KANSAS GAS AND ELECTRIC(316) 383-8600

BENCHMARK

- BM-1: BASE OF THE LIGHT POLE BEING NORTH 09°48'01" EAST, A DISTANCE OF 165.06 FEET FROM THE NORTHWEST CORNER OF THE SUBJECT PROPERTY.
ELEV.=117.36

- BM-2: CITY OF WICHITA, HEADWALL EAST END OF BRIDGE, CENTER LINE OF MAPLE ST. INTERSECT HOOVER.
ELEV.=132.53



CALL BEFORE YOU
DIG - DRILL - BLAST
800-344-7233
(DIG-SAFE)
(316) 687-3753
(FAX)

KANSAS ONE CALL SYSTEM, INC.

DEVELOPER:

DICK'S SPORTING GOODS
200 INDUSTRY DRIVE
RIDC PARK WEST
PITTSBURGH, PA 15275

CONTACT : JEFF TARRIS
(412) 809-0100

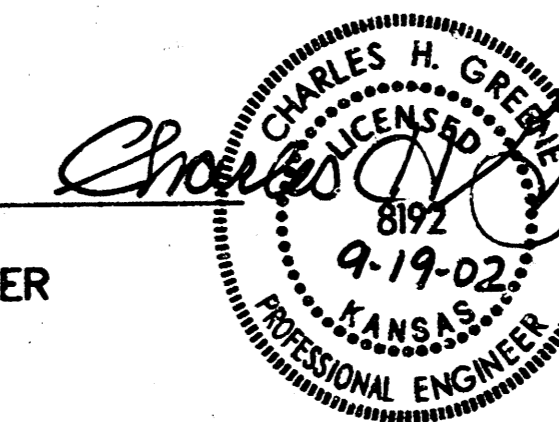
APPROVED BY:

ENGINEER

I HEREBY CERTIFY THAT THIS PROJECT HAS BEEN DESIGNED, AND THESE PLANS PREPARED, IN ACCORDANCE WITH THE DESIGN CRITERIA OF THE CITY OF WICHITA AND KANSAS DEPARTMENT OF HEALTH AND ENVIRONMENT.

I FURTHER CERTIFY THAT KAW VALLEY ENGINEERING, INC. HAS BEEN RETAINED TO COMPLETE AS-BUILT DRAWINGS FOR THIS PROJECT.

CHARLES H. GREENE
KANSAS PROFESSIONAL ENGINEER
NO. 8192



DATE

APPROVED AS NOTED:

By CITY ENGINEER OF WICHITA

SANITARY SEWERS VRH 9/25/02

STORM SEWER _____

DRIVEWAY APPROACHES _____

WATER MAINS _____

PAVING _____

NOTE TO CONTRACTOR

INSPECTION AND TESTING FOR THIS PROJECT IS TO BE PROVIDED BY A LICENSED CONSULTING ENGINEERING FIRM UNDER CONTRACT WITH THE OWNER/DEVELOPER. SAID INSPECTION IS TO BE IN ACCORDANCE WITH THE CITY OF WICHITA STANDARD CONSTRUCTION ENGINEERING PRACTICES AND CERTIFIED BY A LICENSED PROFESSIONAL ENGINEER. NO WORK SHALL BE PERFORMED IN DEDICATED EASEMENTS OR THE PUBLIC RIGHT-OF-WAY BY THE CONTRACTOR WITHOUT SUCH INSPECTION NOR SHALL ANY WORK BE COMMENCED IN DEDICATED EASEMENTS OR PUBLIC RIGHT-OF-WAY WITHOUT WRITTEN AUTHORIZATION BY THE CITY ENGINEER.

12/10/02
DATE

2/28/03 LAL
POF

REV	DATE	DESCRIPTION
1	09/25/02	PER CITY COMMENTS
0	09/25/02	INITIAL SUBMITTAL

MTA	CHK
JOS	DWN
JOS	CHK

PROJ. NO.	C0200936
DATE	09/19/02
DESIGNER	MTA
DRAWN BY	JOS
CHK	REV
01-SJS	1
SHEET	1 OF 5

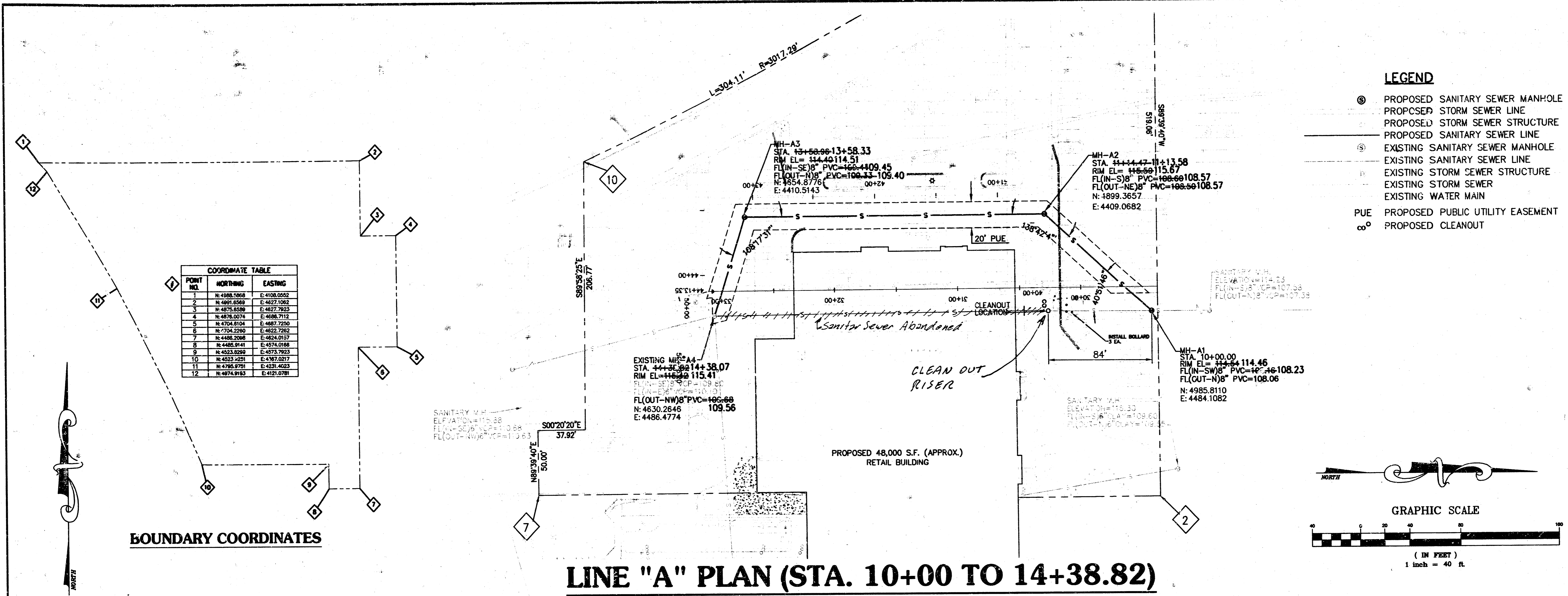
DICK'S SPORTING GOODS
4600 WEST KELLOGG DRIVE
WICHITA, KANSAS

SANITARY SEWER PLANS
TITLE SHEET

KAW VALLEY ENGINEERING, INC. - CONSULTING ENGINEERS
Office: Junction City, Mo. Kansas City, Mo. Lawrence, Mo.

14700 W. 114TH TERRACE
LENEXA, KANSAS 66215
913-894-9150 FAX 913-894-5977
E-MAIL info@kve.com
WEB SITE www.kve.com

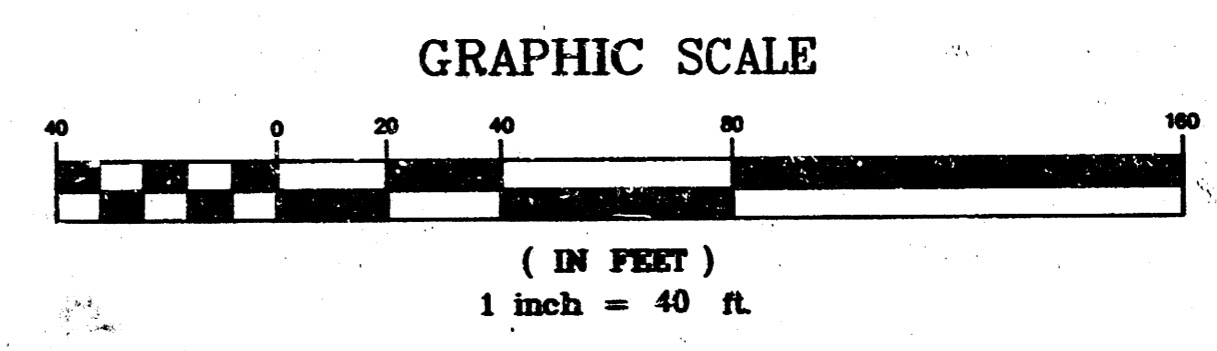
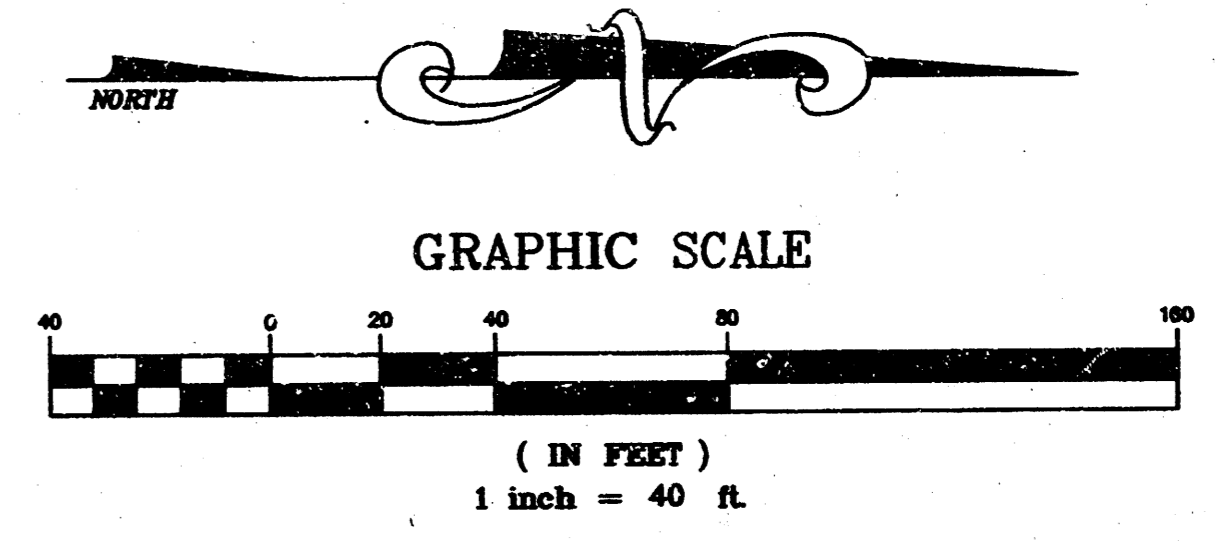
Z:\Land Projects\02_0831\DWG\SANITARY\AS_BUILT\AS-BUILT\AS-BUILT.dwg, 02/26/2003 06:08:59 PM, 11, ACA



POINT NO.	NORTHING	EASTING
1	N 4988.7065	E 4108.0052
2	N 4997.5587	E 4223.1063
3	N 4975.5588	E 4227.7923
4	N 4978.0074	E 4268.7112
5	N 4704.5104	E 4287.7250
6	N 4704.2292	E 4222.7282
7	N 4488.2086	E 4244.0127
8	N 4485.2141	E 4374.0188
9	N 4533.6292	E 4273.7923
10	N 4523.4291	E 4307.0217
11	N 4782.9791	E 4235.4023
12	N 4674.9182	E 4121.0781

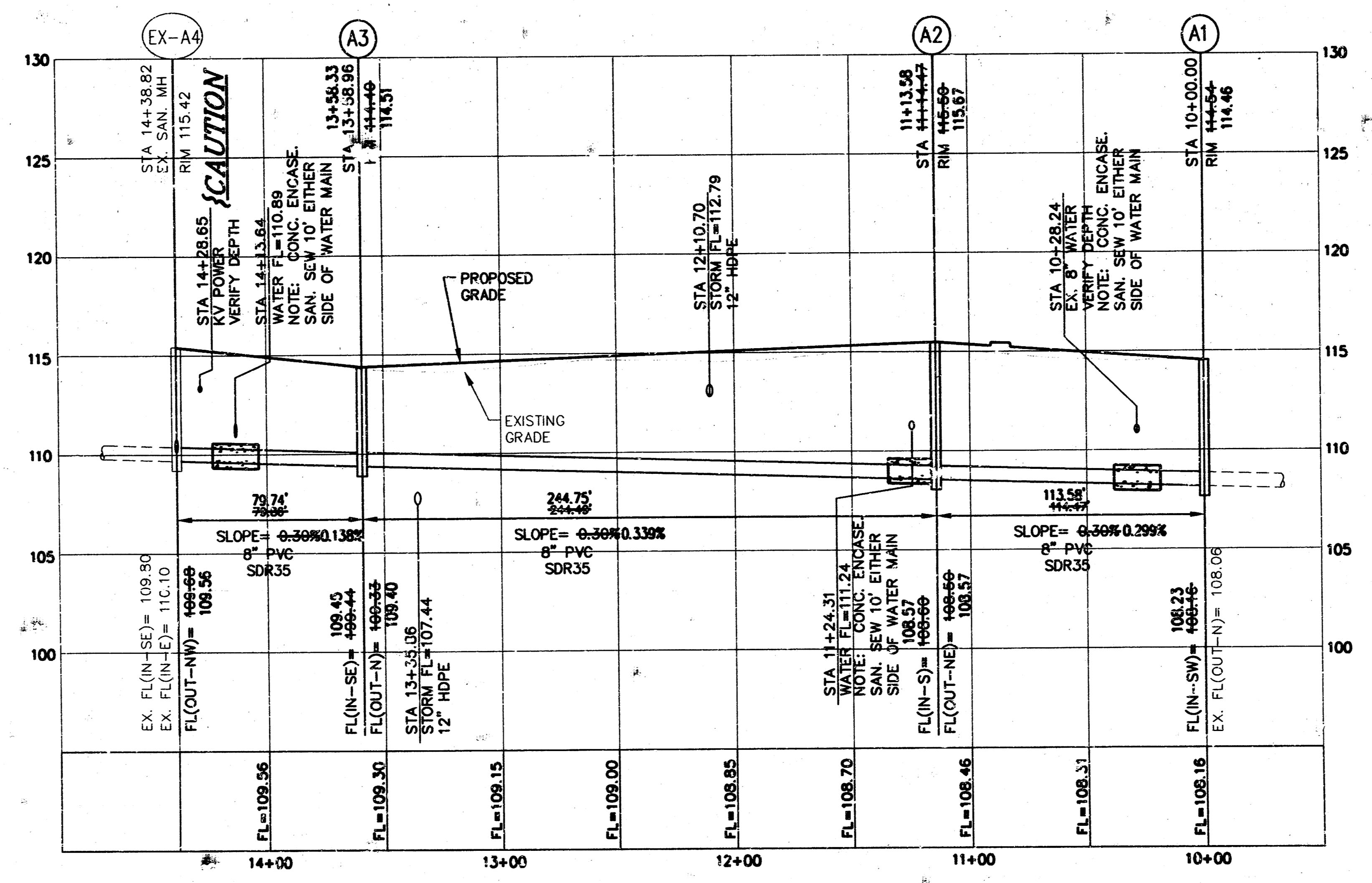
BOUNDARY COORDINATES

- LEGEND**
- ⊙ PROPOSED SANITARY SEWER MANHOLE
 - PROPOSED STORM SEWER LINE
 - PROPOSED STORM SEWER STRUCTURE
 - PROPOSED SANITARY SEWER LINE
 - EXISTING SANITARY SEWER MANHOLE
 - EXISTING SANITARY SEWER LINE
 - EXISTING STORM SEWER STRUCTURE
 - EXISTING STORM SEWER
 - EXISTING WATER MAIN
 - PUE PROPOSED PUBLIC UTILITY EASEMENT
 - ∞° PROPOSED CLEANOUT

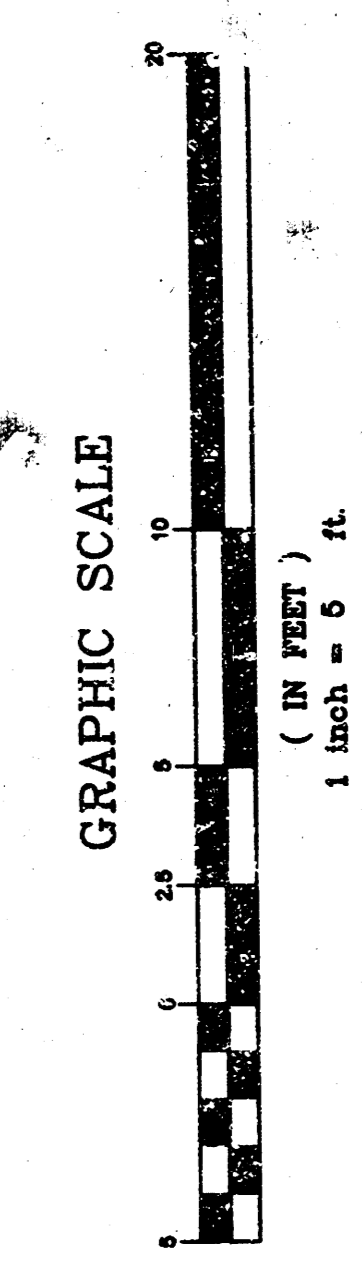


MH	DESCRIPTION
A1	STANDARD MANHOLE OVER EXISTING 8" LINE
A2, A3	TYPE "P" STANDARD MANHOLE
A4	EXISTING MANHOLE

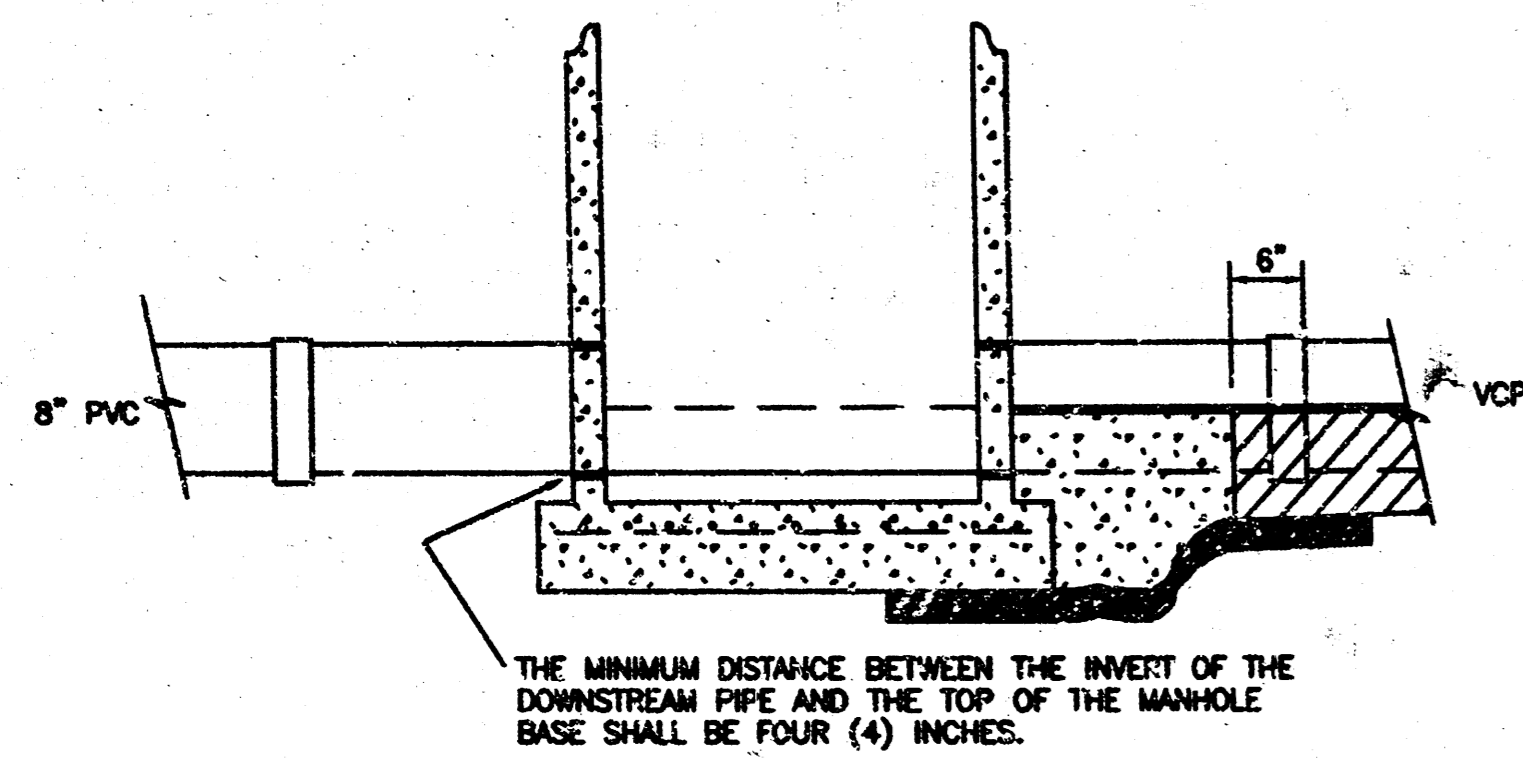
NOTE:
CONTRACTOR TO CAREFULLY EXCAVATE AND VERIFY DEPTH AND LOCATION OF KV POWER.



LINE "A" PROFILE (STA. 10+00 TO 14+38.82)

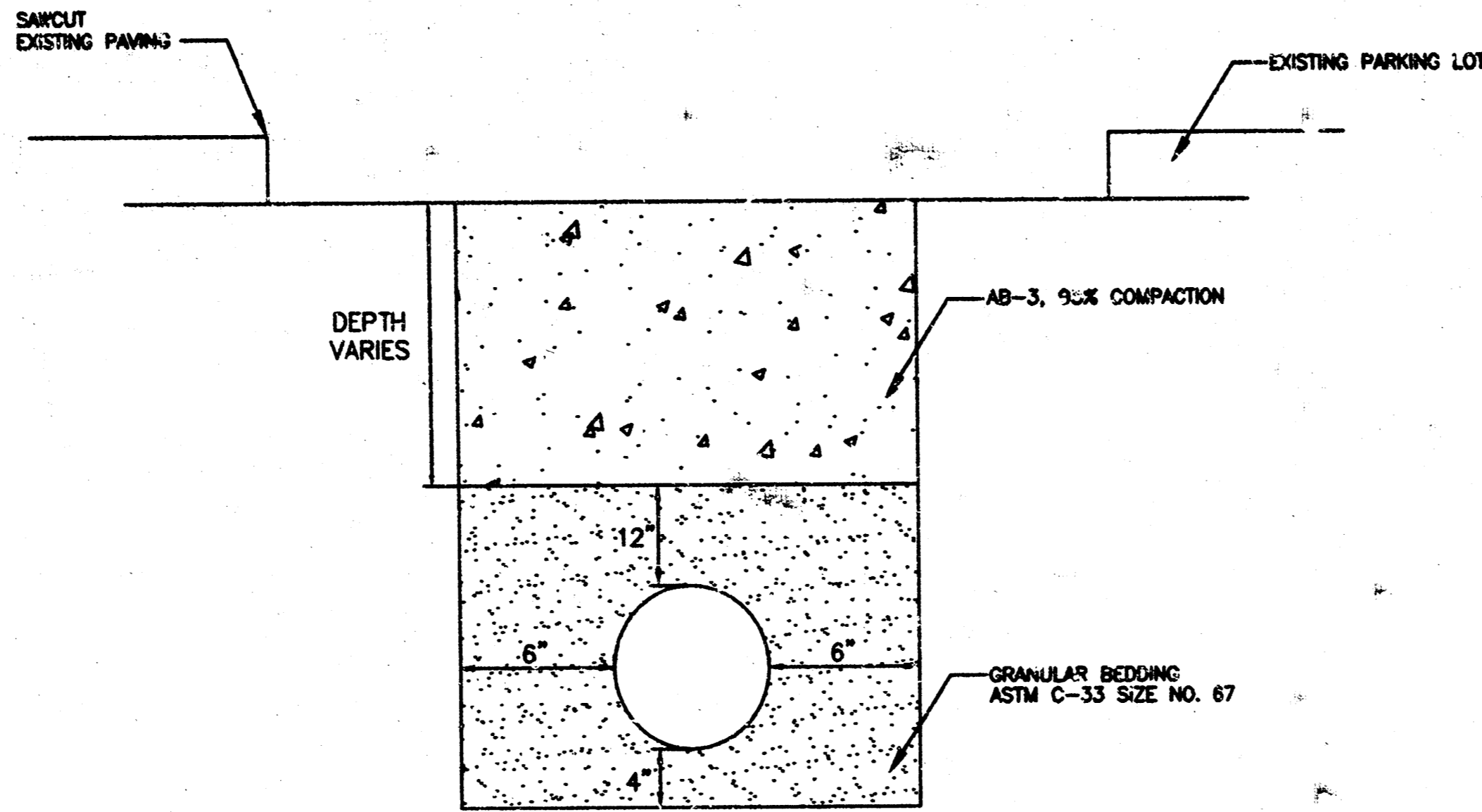


PROJ. NO. 02-00938	DATE 08/19/02	DESIGNER CHG	DRAWN BY JCS	CHK JCS	REV 01-SSPP	3 OF 5
DICK'S SPORTING GOODS 4600 WEST KELLOGG DRIVE WICHITA, KANSAS			KAW VALLEY ENGINEERING, INC. - CONSULTING ENGINEERS 14700 W. 114TH TERRACE LENEKA, KANSAS 66215 913-864-3130 www.kve.com WEB SITE			
SANITARY SEWER PLANS - AS-BUILT LINE "A" PLAN AND PROFILE			1277 PPS			
REV	DATE	DESCRIPTION	DSN	DWN	CHK	
1	02/26/03	AS-BUILT/CLEAN-OUT				
0	12/20/02	INITIAL AS-BUILT SUBMITTAL				

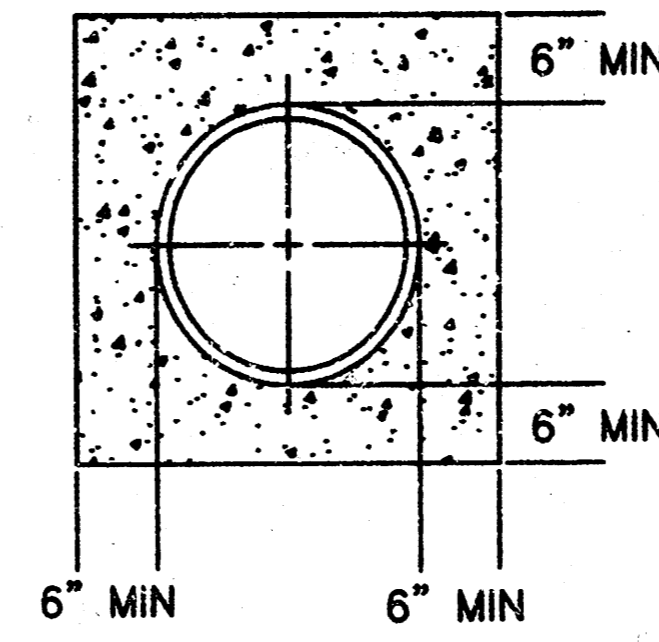


MANHOLE BASE SECTION
N.T.S.

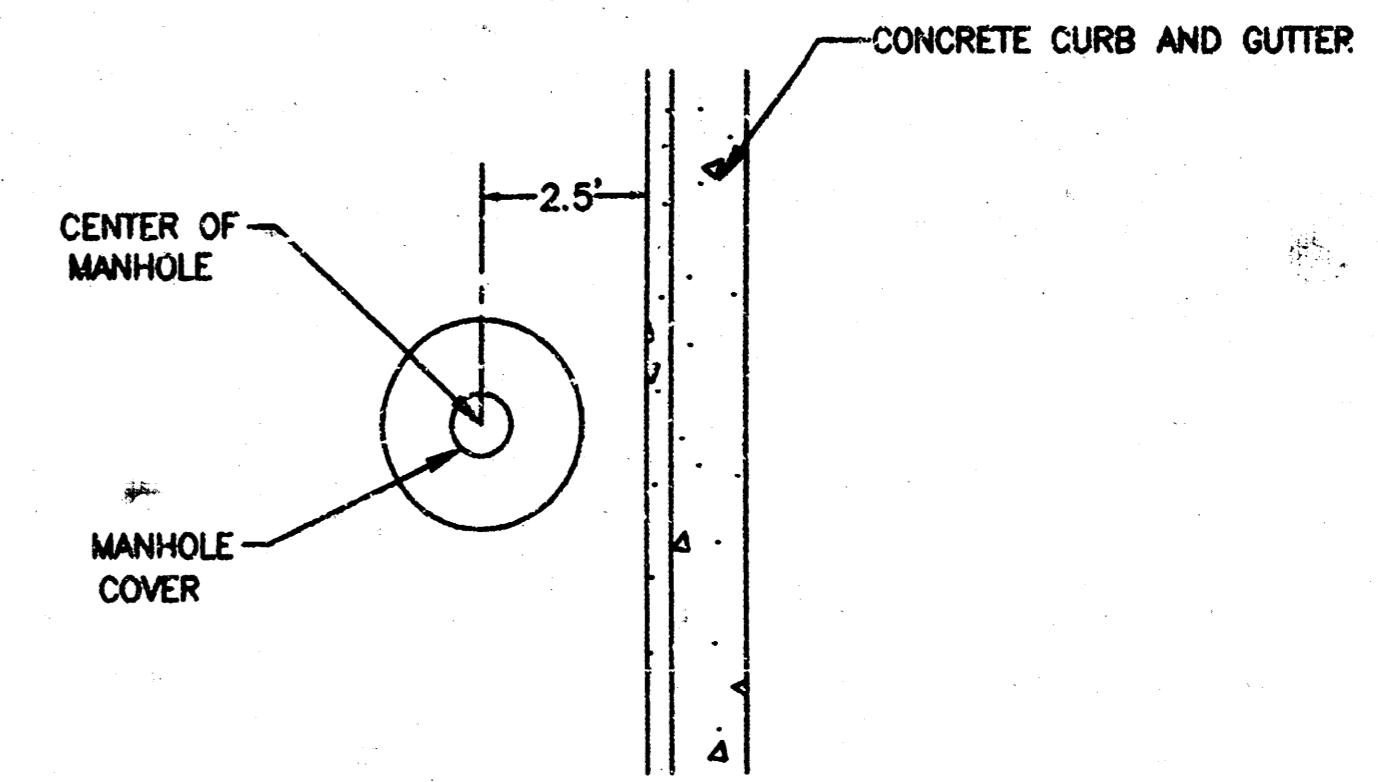
- NOTES:
1. 1ST JOINT OF PIPE SHALL BE EMBEDDED IN CONCRETE TO WITHIN 6" OF THE FIRST JOINT FOR RCP & VCP.
 2. IF FLEXIBLE OR SEMI-FLEXIBLE PIPE IS USED, A FLEXIBLE WALL CONNECTOR MUST BE USED.



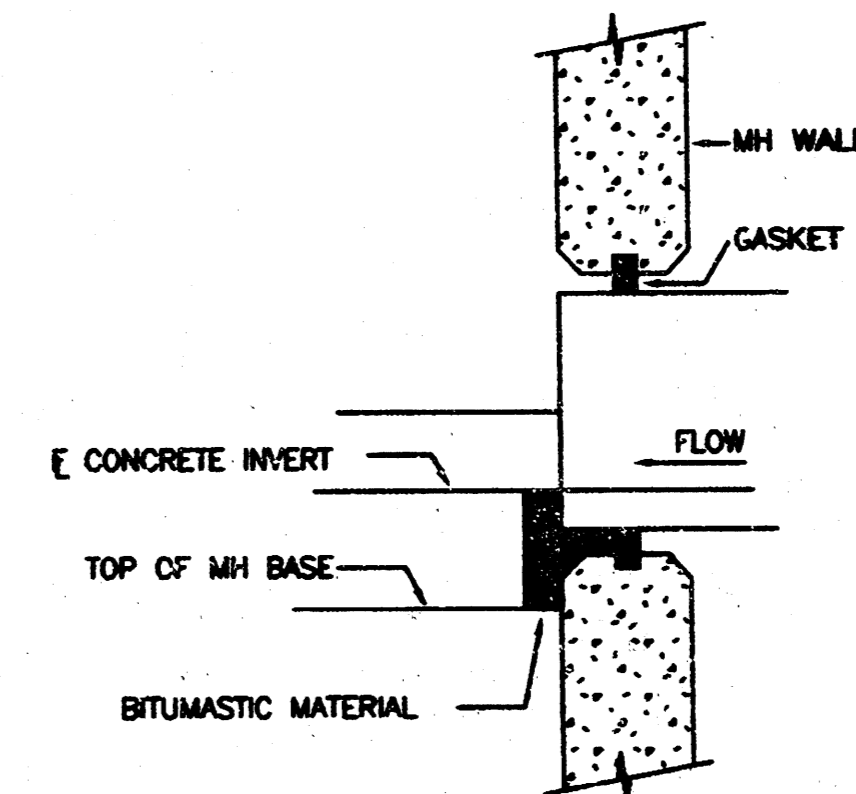
TRENCH DETAILS
N.T.S.



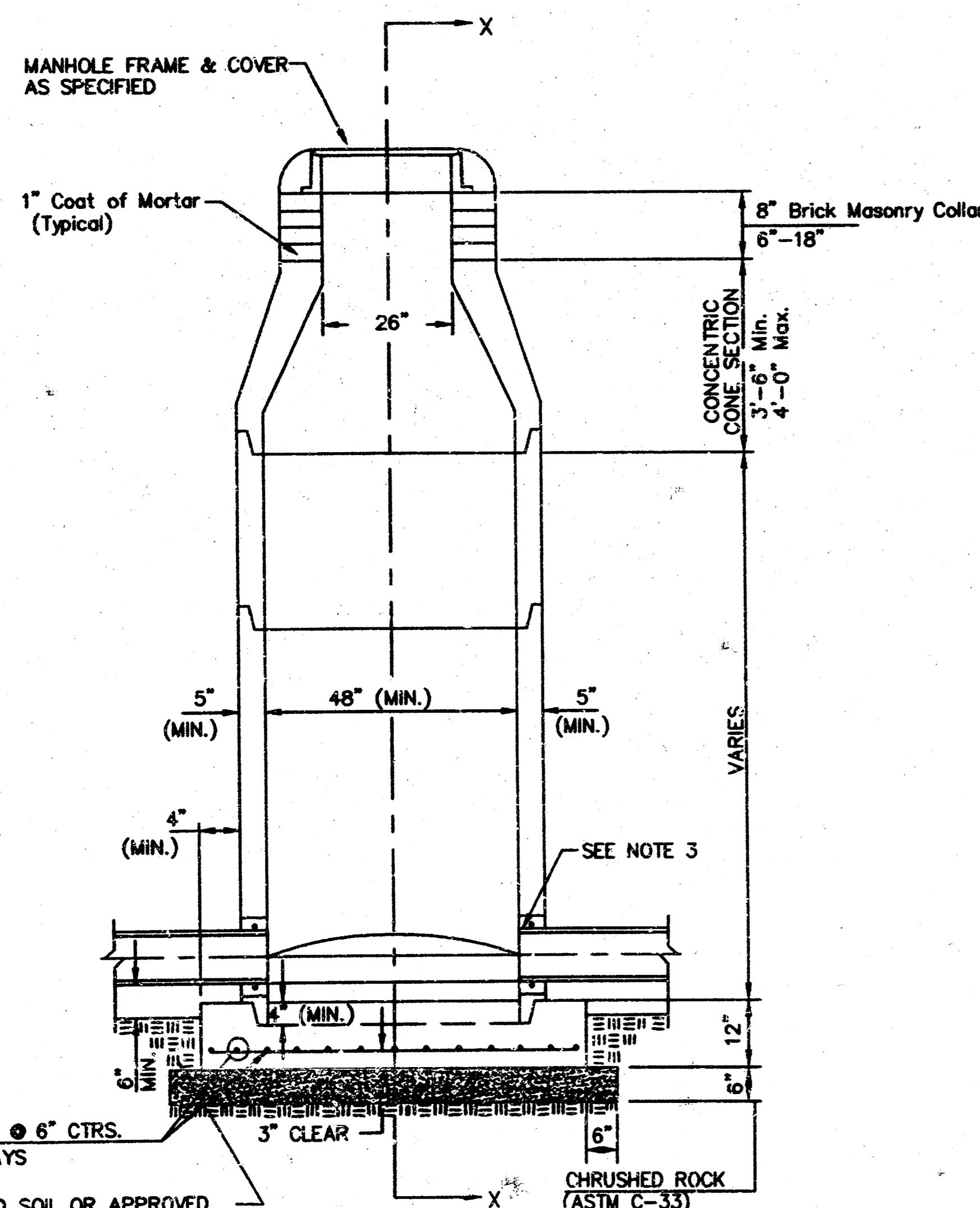
CONCRETE ENCASEMENT
N.T.S.



MANHOLE PLACEMENT DETAIL
N.T.S.



FLEXIBLE WALL CONNECTION
N.T.S.



TYPE P STANDARD MANHOLE
MH A2, MH A3

- GENERAL NOTES
- 1.
 2. PRECAST MANHOLE NOTES

ALL PRECAST CONCRETE MANHOLE SECTIONS SHALL CONFORM TO THE LATEST REVISIONS OF A.S.T.M. C478 AS MODIFIED BY THE SPECIFICATIONS.

NON-SHRINK GROUT SHALL BE NON-METALLIC TYPE.

APPROVED FLEXIBLE WATERSTOP GASKETS SHALL BE INSTALLED TO JOIN THE SEWER TO THE MANHOLE WALL WHEN A.B.S. COMPOSITE PIPE OR P.V.C. PIPE IS USED. FOR OTHER TYPES OF PIPE THE SEWER SHALL BE GROUTED IN PLACE WITH NON-SHRINK GROUT. THE SEWER PIPE SHALL BE SUPPORTED WITH CONCRETE ENCASEMENT A MINIMUM OF 3 FEET FROM THE MANHOLE WALL AND TO THE FIRST JOINT FOR V.C.P. SUCH THAT THE JOINT REMAINS FLEXIBLE.

ALL INSIDE SURFACES OF THE CONCRETE MANHOLE WHICH WOULD BE EXPOSED TO SEWER GAS SHALL BE COATED WITH 2 COATS THEMEC SERIES 66 HI-BUILD EPOXYLINE. DRY THICKNESS OF 8 MILS (MIN.).

EXTERIOR MANHOLE WALLS SHALL BE COATED WITH 1 COAT MOBILARMA 633 BITUMINOUS COATING.

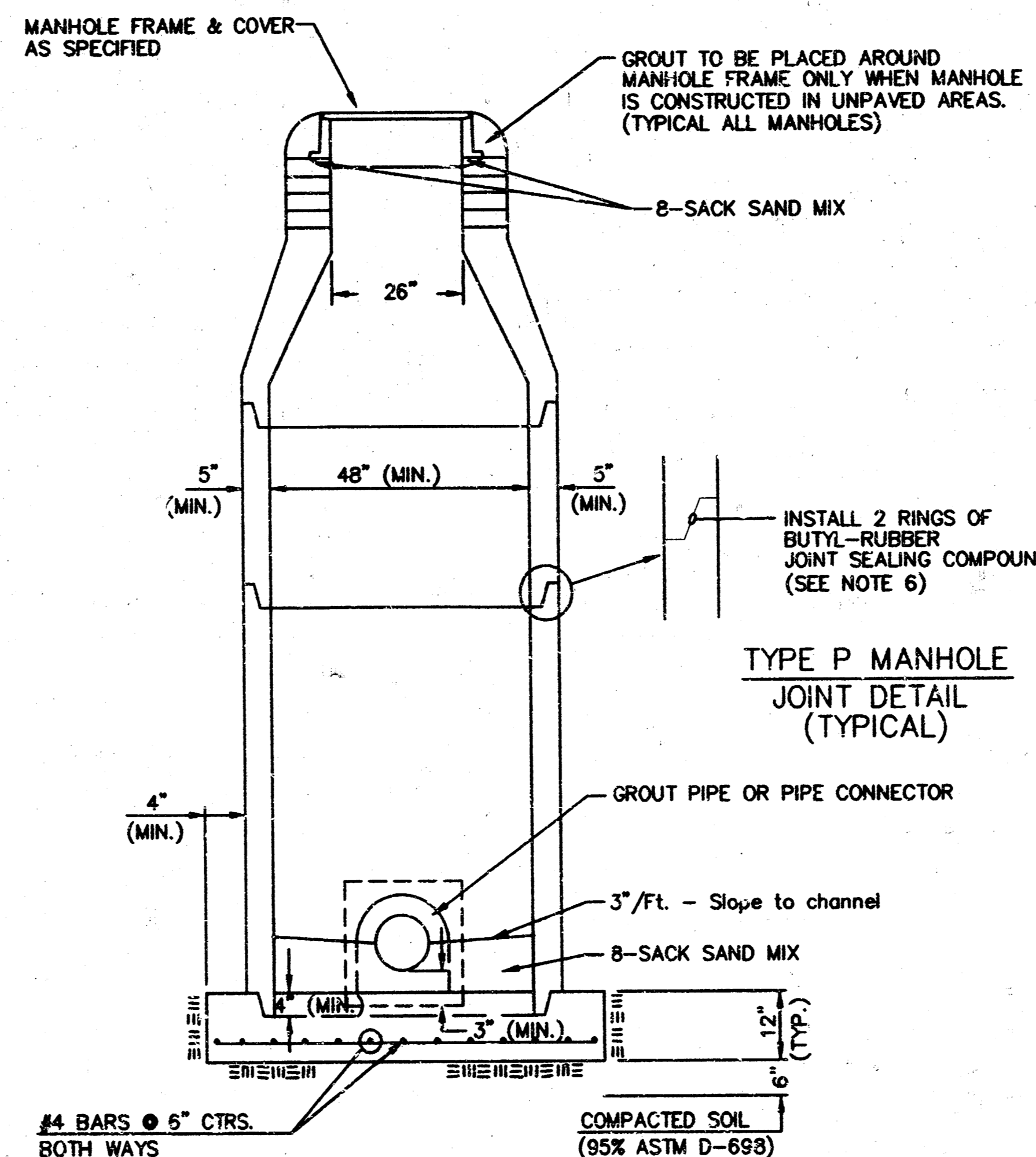
JOINT SEALING COMPOUND SHALL BE KENT SEAL NO. 2 OR APPROVED EQUAL.

PRECAST MANHOLES SHALL BE SET AT LEAST 4 INCHES INTO THE MANHOLE BASE.

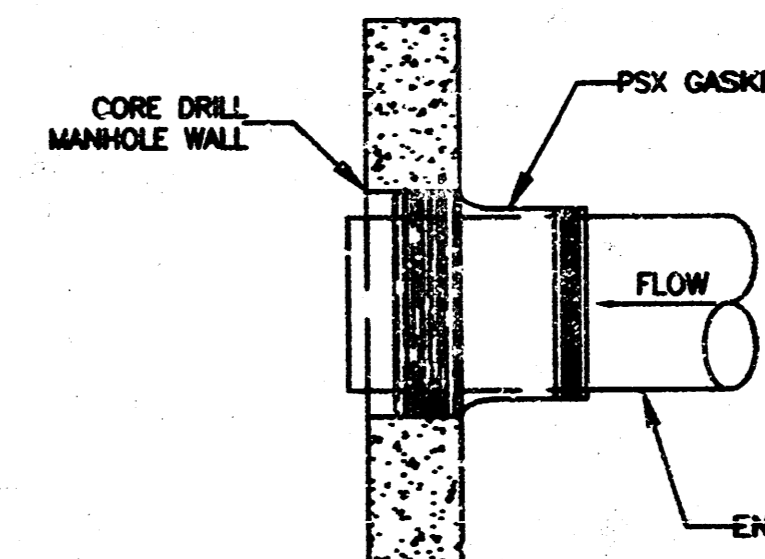
TOP OF MANHOLE FLOOR SLAB SHALL BE AT LEAST 3 INCHES BELOW THE FLOWLINE OF THE OUTLET PIPE TO INSURE SUFFICIENT MINIMUM THICKNESS OF SHAPED INVERT.

LIFTING HOLES SHALL BE FILLED WITH NON-SHRINK GROUT AND THE INTERIOR SURFACE COATED AS SPECIFIED.

MORTAR USED IN MASONRY CONSTRUCTION SHALL CONTAIN 8 SACKS OF CEMENT PER CUBIC YARD. CONCRETE USED IN MANHOLE BASES SHALL CONFORM TO THE REQUIREMENTS OF CONCRETE FOR CONCRETE PAVEMENT CONSTRUCTION AS SPECIFIED IN THE CITY STANDARD PAVING SPECIFICATIONS USING CITY CONCRETE PAVEMENT MIX WITHOUT AIR ENTRAINING ADMIXTURE. MORTAR SHALL BE PLACED AROUND THE MANHOLE RING AS SHOWN ON THE DRAWINGS WHEN MANHOLES ARE CONSTRUCTED IN UNPAVED AREAS. MANHOLES CONSTRUCTED WHERE PIPE SIZES ARE SMALLER THAN 24" SHALL HAVE AN INSIDE DIAMETER OF 4". MANHOLES CONSTRUCTED WHERE PIPE SIZES ARE 24" OR LARGER SHALL HAVE AN INSIDE DIAMETER OF 5". COMPLETED MANHOLE SHALL BE WITHOUT LEAKS AND WATER TIGHT.



SECTION X
N.T.S.
(TYPICAL)



CONCRETE MANHOLE ADAPTER
N.T.S.

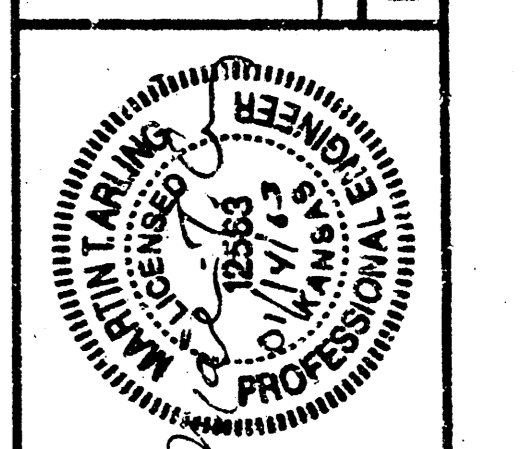
DICK'S SPORTING GOODS
4600 WEST KELLOGG DRIVE
WICHITA, KANSAS

SANITARY SEWER PLANS
DETAIL SHEET

PROJ NO	C0200938
DATE	08/19/02
DESIGNER	CHG
DRAWN BY	HS
CPN	045021
SHEET	4 OF 5

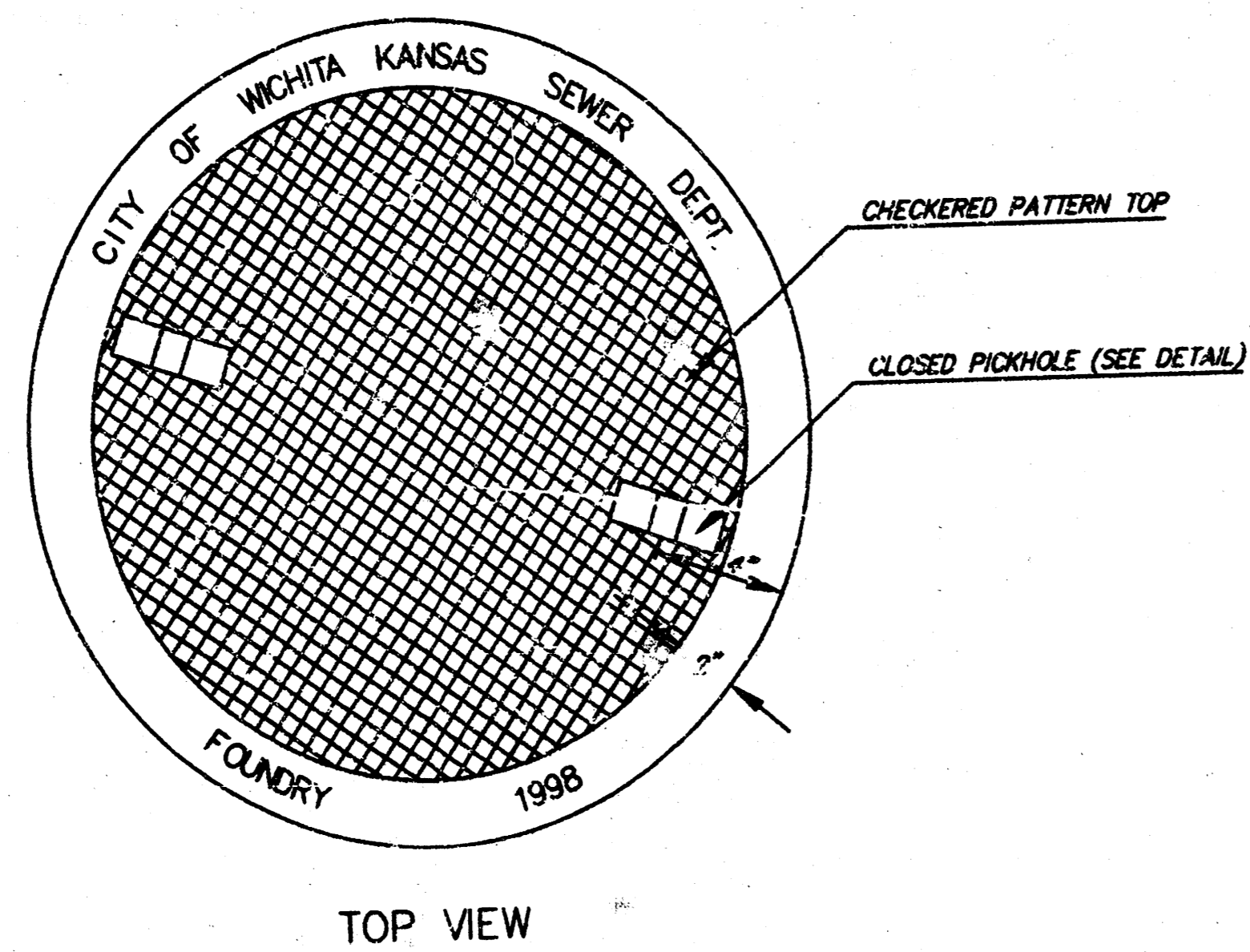
14700 W. 114TH TERRACE
OVERLAND PARK, MO 66215
TEL: 913-884-5150 FAX: 913-884-5877
E-MAIL: info@kve.com
WEB SITE: www.kve.com

KAW VALLEY ENGINEERING, INC. - CONSULTING ENGINEERS
Office: Junction City, Mo., Lawrence, Mo.

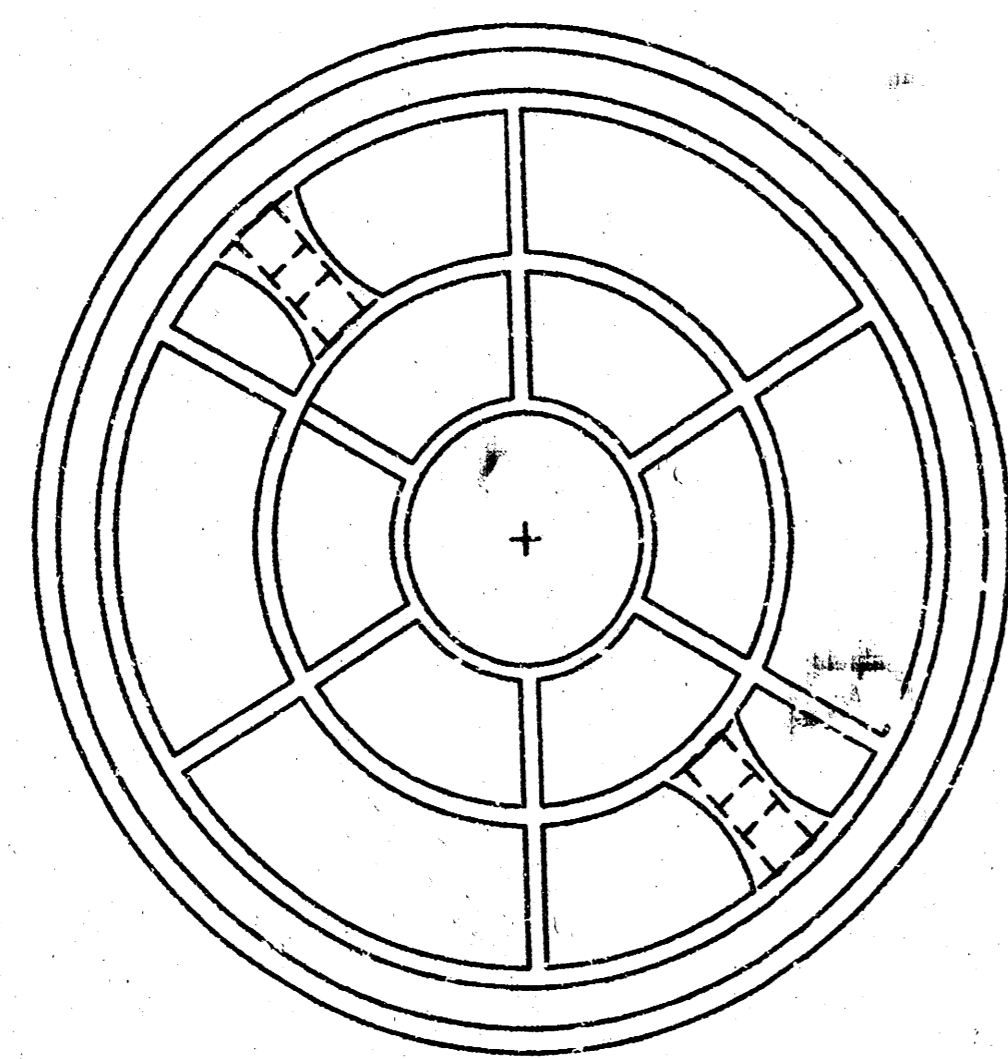


REV	DATE	DESCRIPTION	CHG	DLW	CHK
0	12/10/02	INITIAL AS-BUILT SUBMITTAL			

MANHOLE COVER
Weight = 180 Lbs.

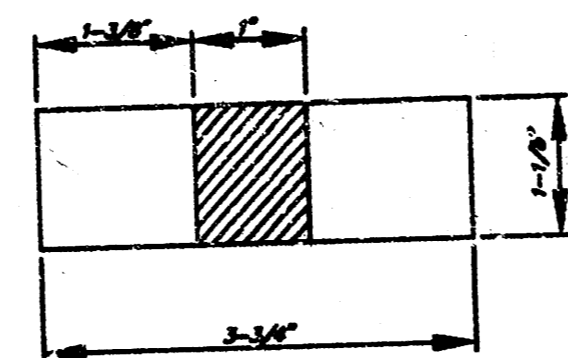


TOP VIEW

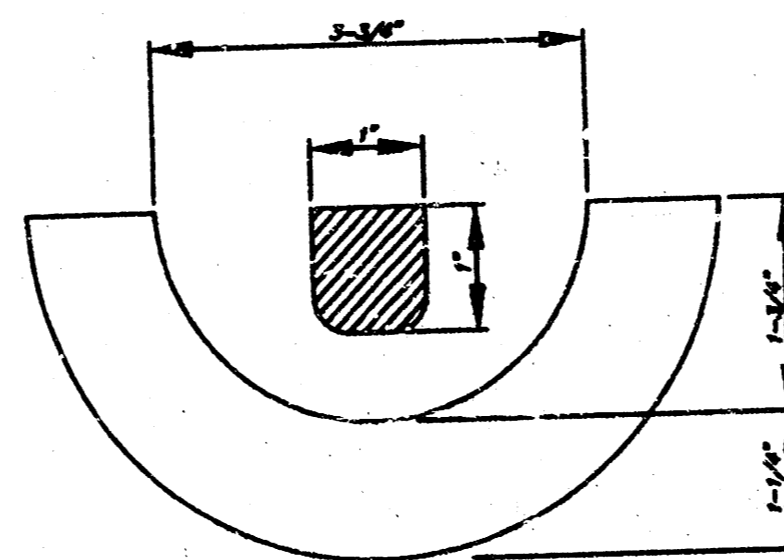


BOTTOM VIEW

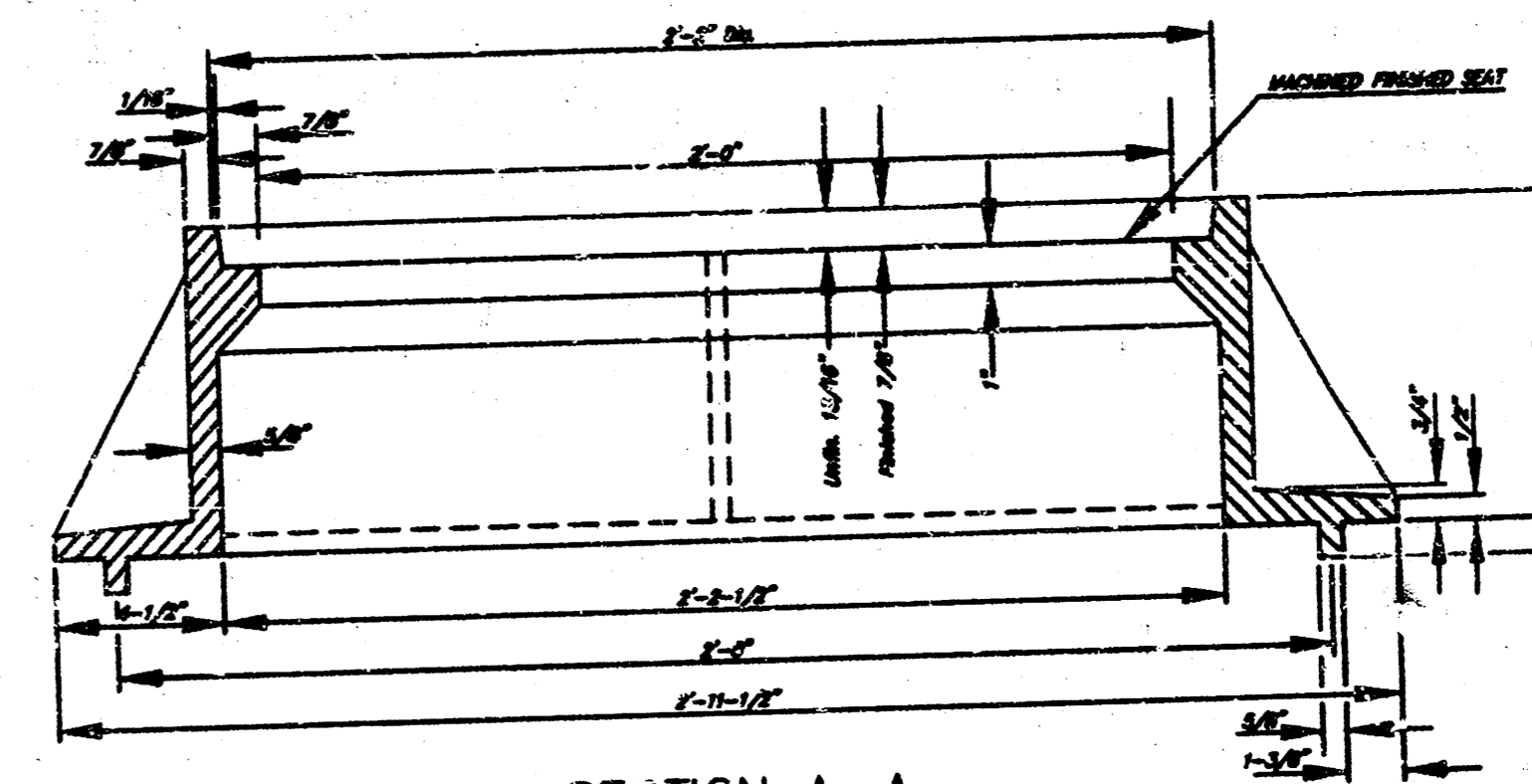
PICKHOLE DETAIL



TOP VIEW

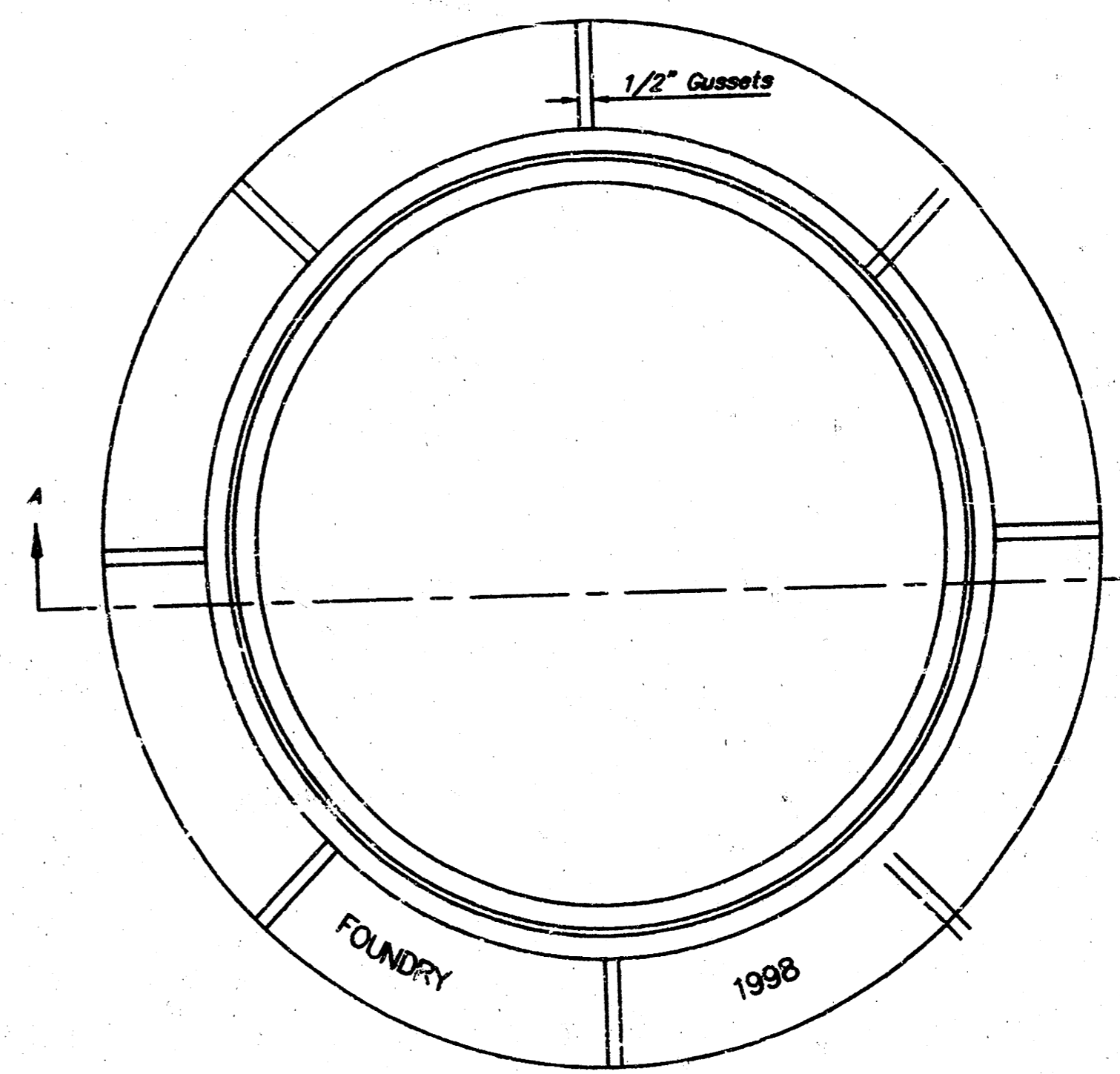


SECTION VIEW

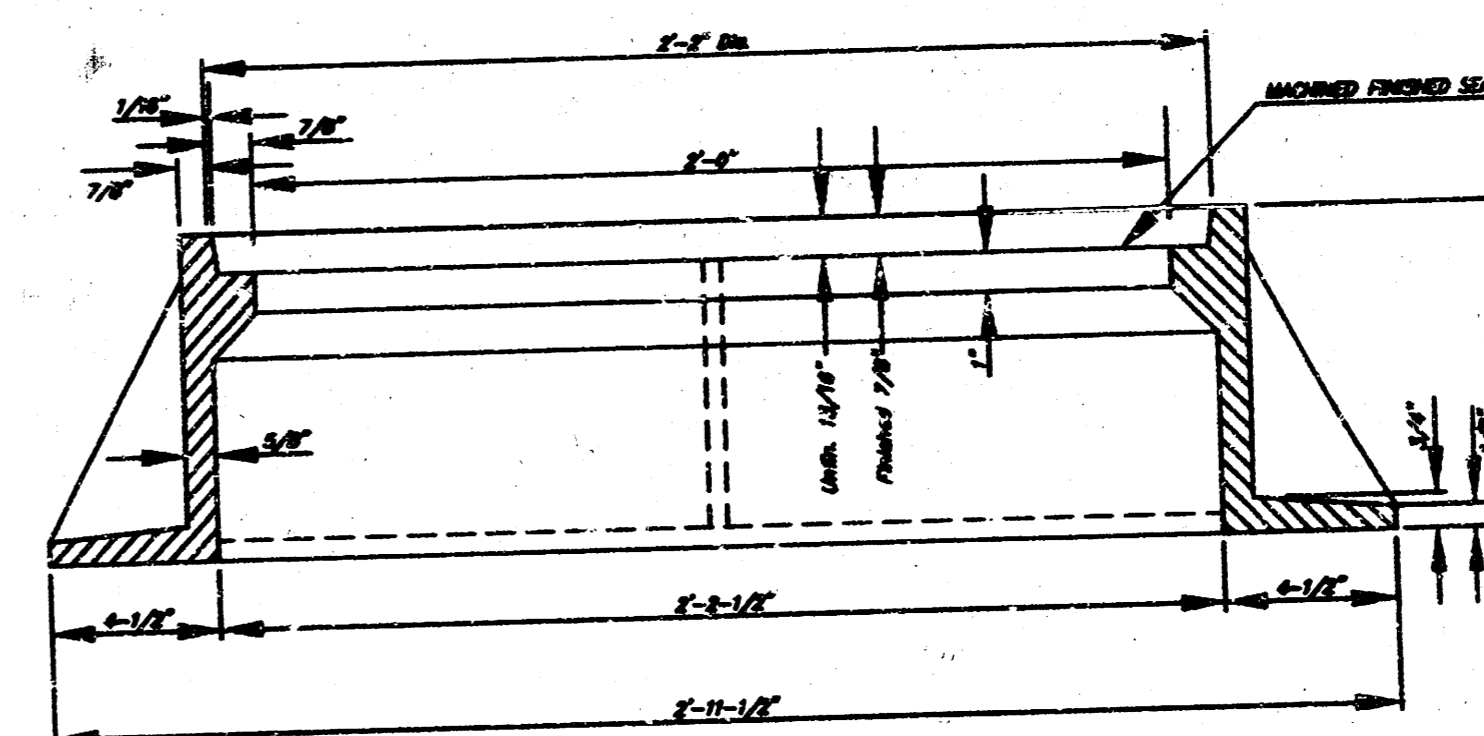


SECTION A-A
MUD RING

MANHOLE FRAME
Weight = 240 Lbs.



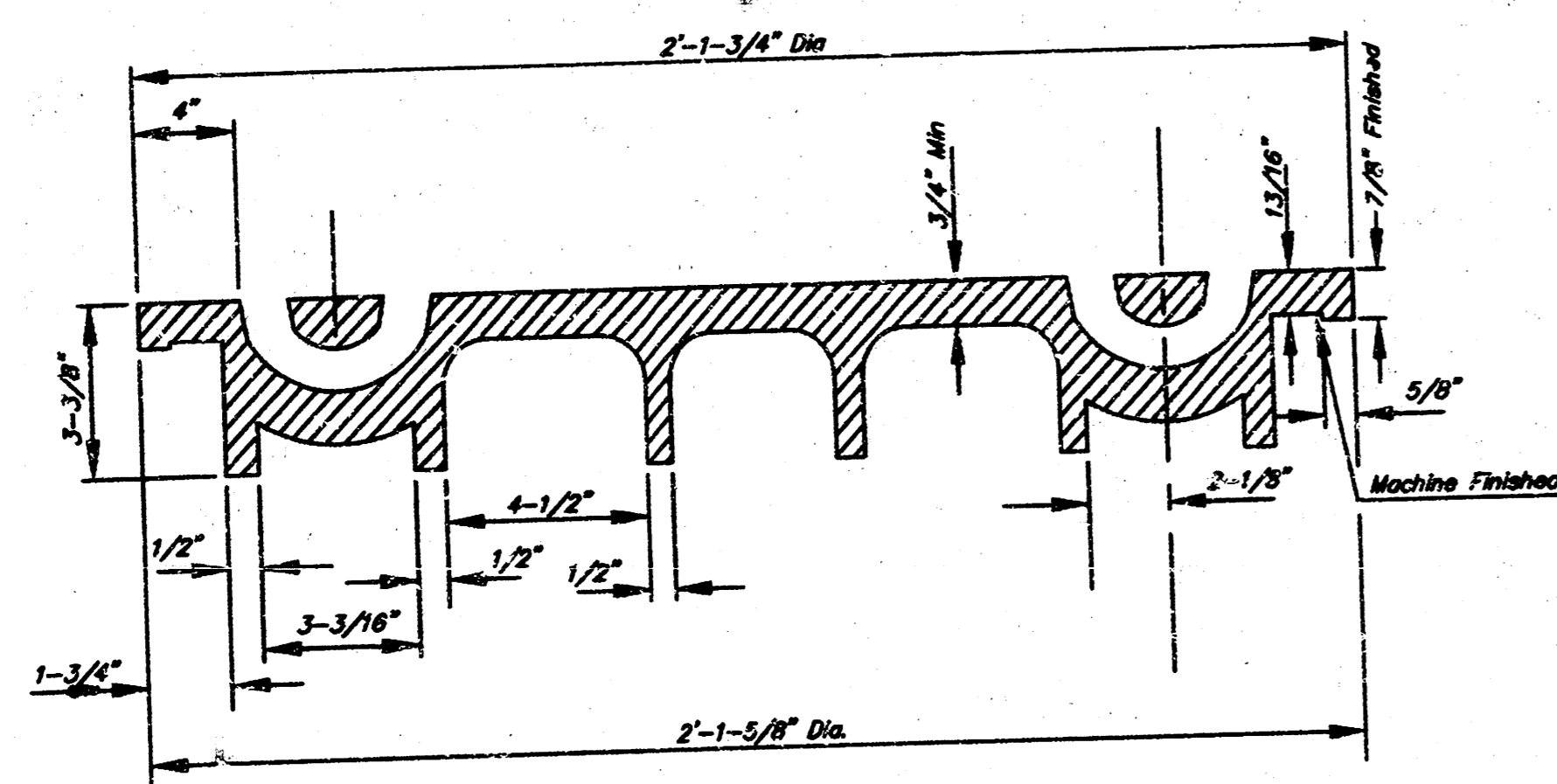
TOP VIEW



SECTION A-A

GENERAL NOTES

- MANHOLE CASTINGS SHALL BE MANUFACTURED USING GOOD QUALITY GRAY IRON CONFORMING TO CLASS 30 OF A.S.T.M. DESIGNATION A-48. DIMENSIONS AND WEIGHTS SHOWN ON THE DETAILED DRAWING SHALL BE CONSIDERED AS MINIMUM REQUIREMENTS AND ANY DEVIATIONS FROM THE DIMENSIONS SHOWN MUST BE SPECIFICALLY APPROVED. THE FINISHED CASTINGS SHALL BE OF UNIFORM QUALITY, FREE FROM BLOWHOLES, POROSITY, HARD SPOTS, SHRINKAGE DISTORTIONS OR OTHER DEFECTS.
- MANHOLE CASTINGS SHALL WEIGH A MINIMUM OF 180 POUNDS ON THE SOLID COVER AND 240 POUNDS ON THE MANHOLE RING. THIS IS A TOTAL OF 420 POUNDS ON A RING AND COVER SET. CASTINGS WEIGHING LESS THAN THE MINIMUM SPECIFICATIONS WILL NOT BE ACCEPTED.
- MANHOLE CASTINGS SHALL BE MANUFACTURED SUCH THAT A COVER MANUFACTURED BY ANY ONE FOUNDRY WILL FIT INTERCHANGEABLY INTO A FRAME MANUFACTURED BY ANOTHER FOUNDRY AND STILL MEET ALLOWABLE CLEARANCES AND NON-ROCKING REQUIREMENTS. THIS WILL REQUIRE MANUFACTURING OF THE MATCHING FACES ON THE COVER AND THE FRAME TO CLOSE TOLERANCES.
- THE OUTSIDE CIRCUMFERENCE OF THE VERTICAL FACE OF THE COVER AND THE INSIDE CIRCUMFERENCE OF THE VERTICAL FACE IN THE FRAME RECESS SHALL BE MANUFACTURED TO TOLERANCES SUCH THAT THE CLEARANCE BETWEEN THE COVER AND FRAME WILL NOT EXCEED 1/8" AT ANY POINT AROUND THE CIRCUMFERENCE OF THE COVER. THE SEATING SURFACES BETWEEN THE COVER AND FRAME SHALL BE MACHINED SUCH THAT THESE SEATING SURFACES SHALL MAKE FULL CONTACT FOR THEIR FULL CIRCUMFERENCE TO PRECLUDE THE COVER FROM ROCKING IN THE FRAME.
- THE MANHOLE FRAME AND COVER SHALL BE MARKED WITH LETTERING INDICATING THE NAME OF THE MANUFACTURER AND THE YEAR WHEN THE COVER OR FRAME WAS CAST. THE COVER SHALL BE FURTHER IDENTIFIED WITH REGARDS TO OWNERSHIP USING LETTERS AT LEAST 1 INCH IN HEIGHT. THIS IDENTIFICATION SHALL BE "CITY OF WICHITA SEWER DEPARTMENT". THE WORD DEPARTMENT MAY BE ABBREVIATED. THE TEXTURE OF THE TOP SURFACE OF THE COVER SHALL BE MANUFACTURED IN A CHECKERED PATTERN DESIGN AS INDICATED ON THE DRAWING. SMOOTH BLOCKOUTS SHALL BE UTILIZED TO HIGHLIGHT THE LETTERING ON THE COVER SURFACE. THE TOTAL AREA OF SMOOTH SURFACE BLOCKOUT SHALL NOT EXCEED THE AREA AS INDICATED ON THE DRAWING. POSITIONING OF SMOOTH BLOCKOUTS AND LETTERING MAY VARY FROM THAT SHOWN ON THE DETAILED DRAWING.



SECTION VIEW

MANHOLE FRAME AND COVER DETAIL

ADOPTED AS STANDARD DESIGN BY
CITY OF WICHITA, KANSAS

PROJ. NO. 08/03038	DATE 08/19/02	DESIGNER MTA	DRW. MTA	CHK. MTA	
<p>DICK'S SPORTING GOODS 4600 WEST KELLOGG DRIVE WICHITA, KANSAS</p> <p>SAINTARY SEWER PLANS - AS-BUILT DETAIL SHEET</p>					
REV	DATE	DESCRIPTION	DSN	DWN	CHK
0	02/10/02	INITIAL AS-BUILT SUBMITTAL			

14700 W. 114TH TERRACE
LEWIS & CLAY, MO 64215
913-885-1147 FAX 913-884-5977
E-MAIL info@kve.com
WEB SITE www.kve.com

KAW VALLEY ENGINEERING, INC. CONSULTING ENGINEERS
Office: 14700 W. 114th, Leawood, Mo.

Z:\Users\pjohnson\Documents\DWG\AS-BUILT\0803038\0803038.DWG, 01/14/2003 11:43:58 AM, 1:1, RLB