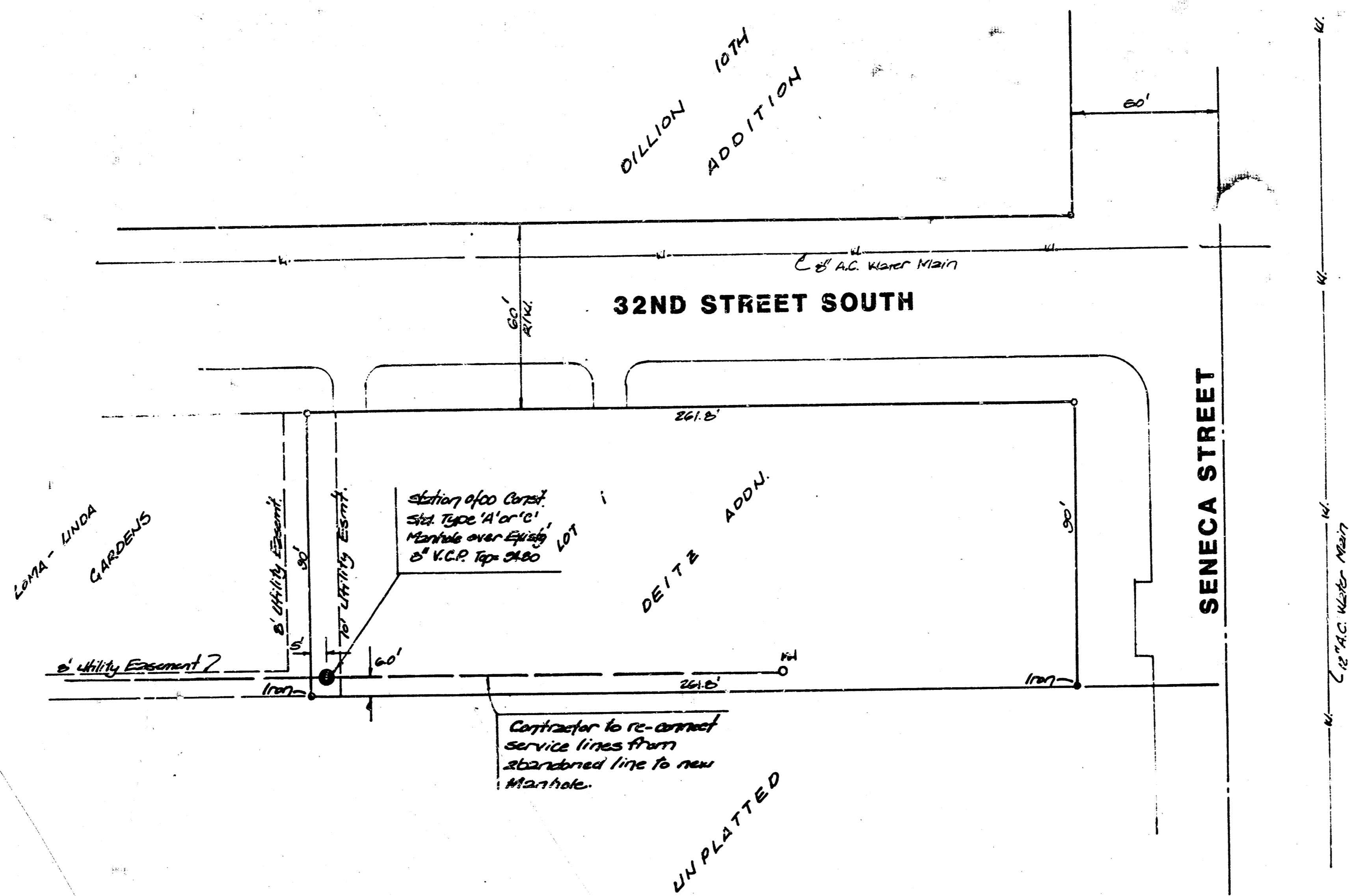


BENCH MARK: 12" Square Cut. Corner of Walks at S.W. Corner of 31st Street South and Pawnee. Elevation: 96.36 City Datum

PLAN
 SHEET NO. 1
 DATE: 10/15/10
 BY: [Signature]
 CHECKED BY: [Signature]



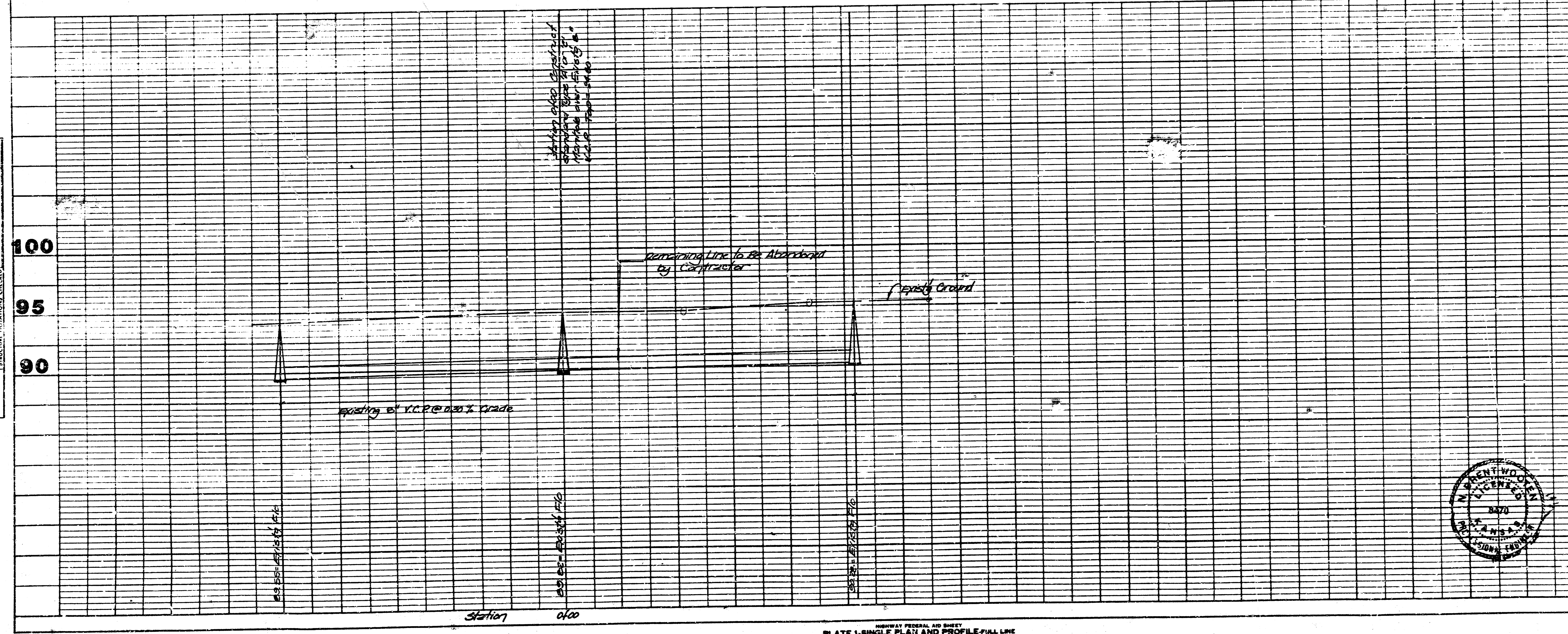
N

SCALE 1" = 30' PLAN
 1" = 5' PROFILE

APPROVED AS NOTED
 By CITY ENGINEER OF WICHITA
 Sanitary Sewers: 028 10/15/10
 Storm Sewers: _____
 Driveway Approaches: _____
 Water Mains: _____
 Pavement: _____

NOTE TO CONTRACTOR
 This project shall be constructed under the supervision of the CITY ENGINEER and conforming to the SPECIFICATIONS of the CITY OF WICHITA. The CONTRACTOR will pay the City of Wichita for all costs of plan review, inspection and looking per contract.

PROFILE
 SHEET NO. 1
 DATE: 10/15/10
 BY: [Signature]
 CHECKED BY: [Signature]



CONSTRUCTION OF MANHOLE
 AND
 ASSIGNMENT OF 12" SANITARY SEWER
 TO DEITZ ADDITION
 CITY OF WICHITA, KS
 Project No.
 100-10-245-20001-200-200-200

BAUGHMAN COMPANY, P.A.
 SURVEYING & ENGINEERING
 316/262-7271 • 330 LAURA • WICHITA, KANSAS 67211

PLATE 1-SINGLE PLAN AND PROFILE-FULL LINE
 PRINTED IN U.S.A.

10 3 5 12

FILMED FROM THE BEST AVAILABLE COPY