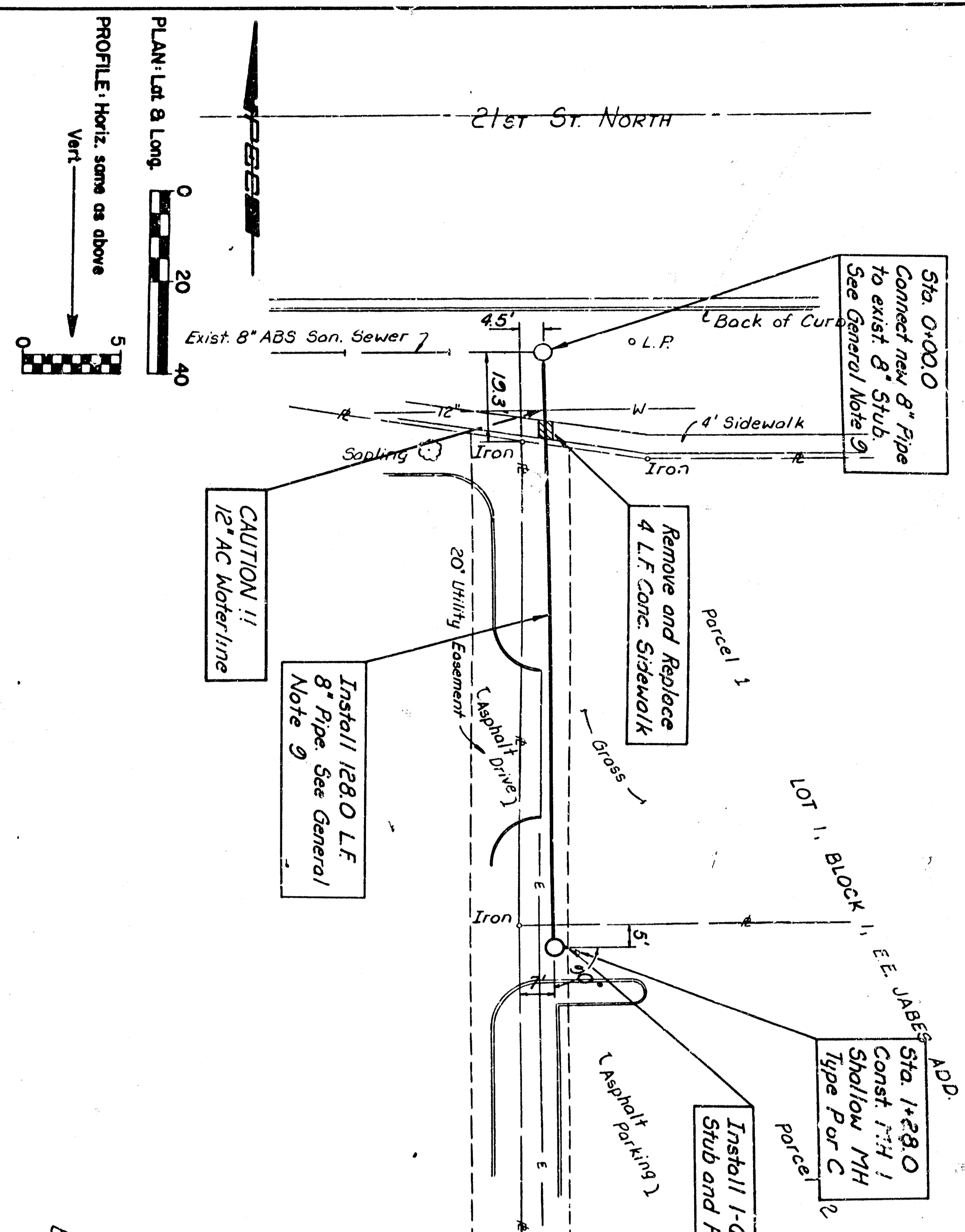
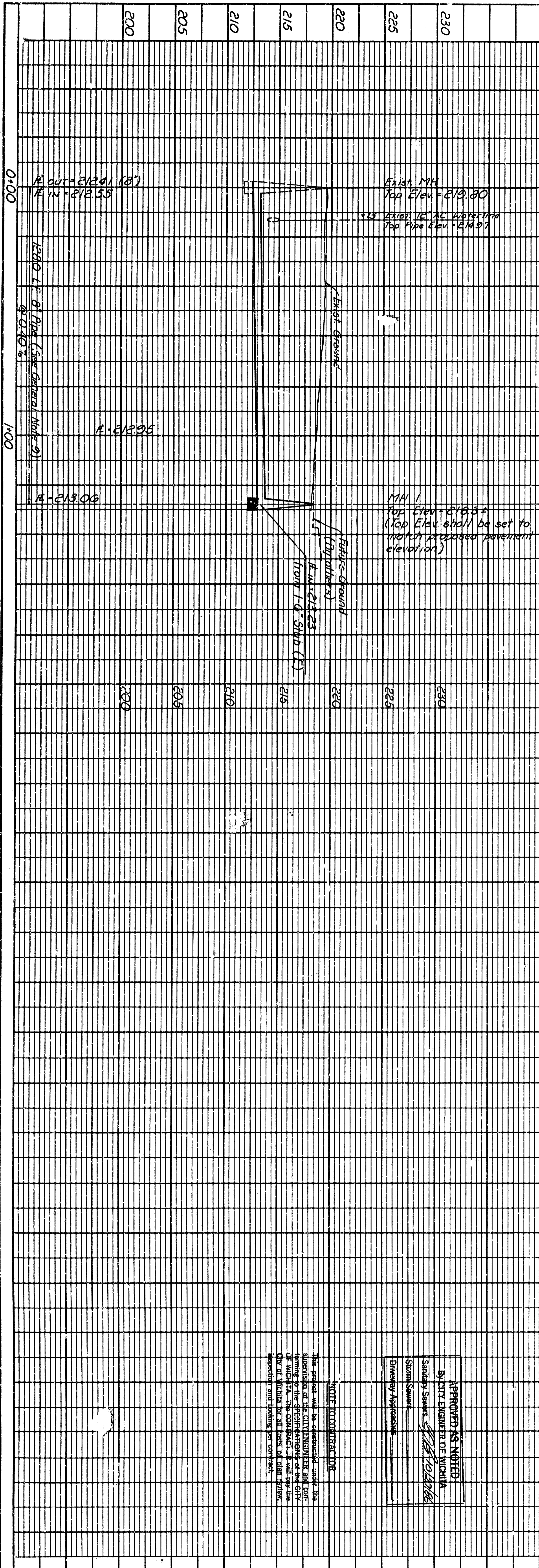
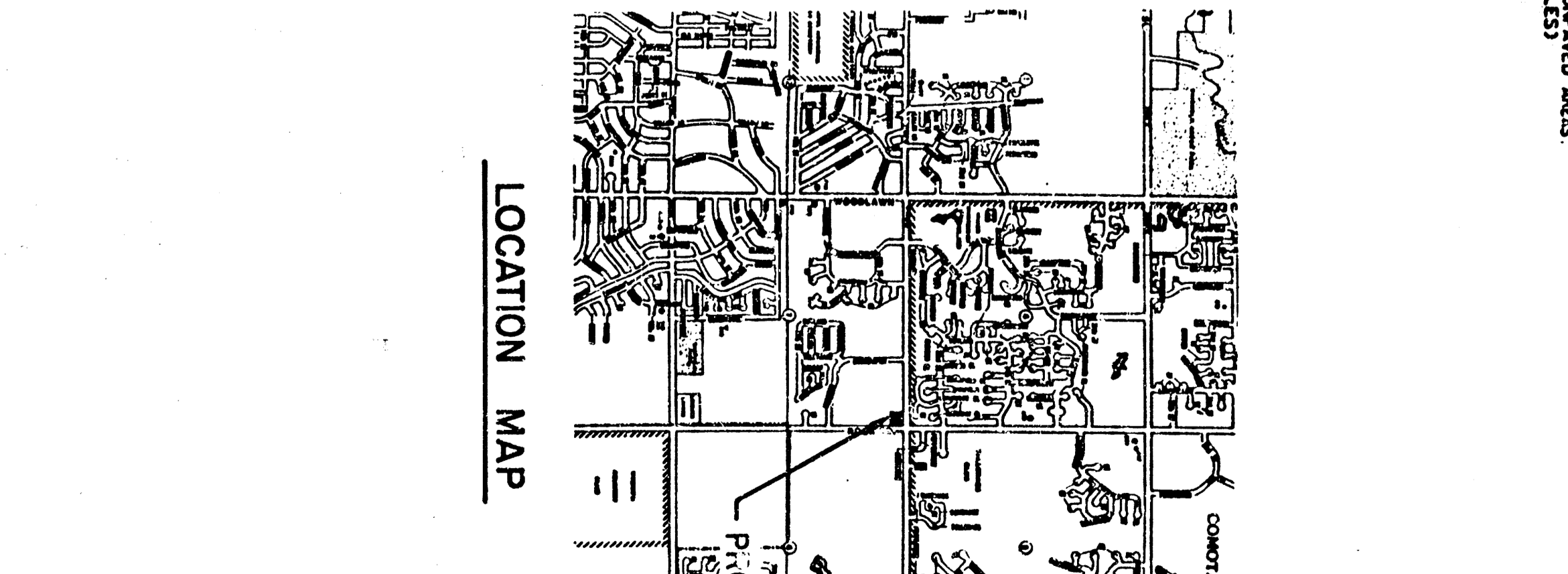
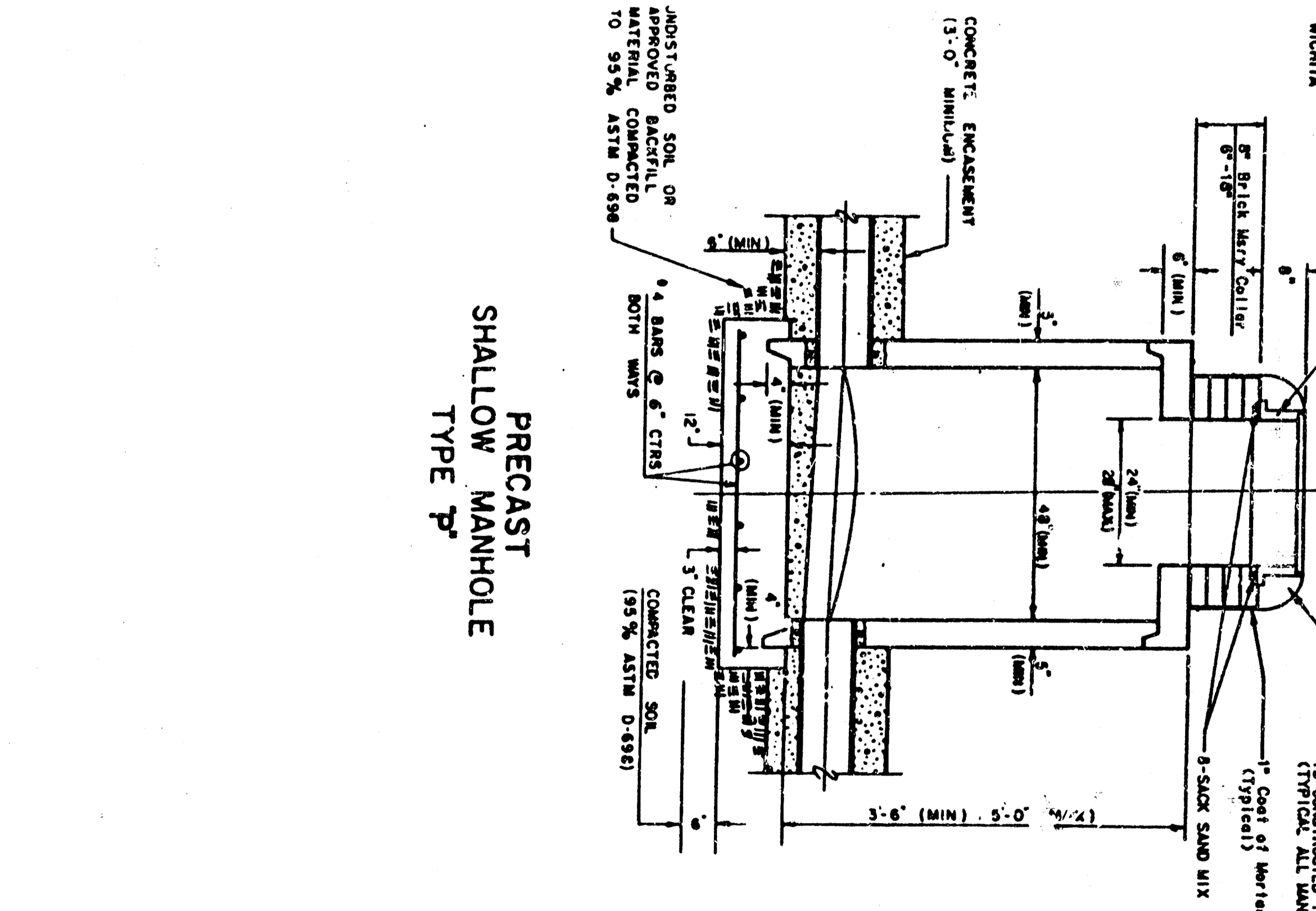


PROFILE	SURVEYED	BY	DATE
NOTE BOOK	PLOTTED		
NO.	GRADES CHECKED		
	B. M. NOTED		
	STRUCTURE NOTATIONS CHECKED		

PLAN	SURVEYED	BY	DATE
NOTE BOOK	PLOTTED		
NO.	ALIGNMENT CHECKED		
	RT. OF WAY CHECKED		



- GENERAL NOTES**
1. ALL CONSTRUCTION AND MATERIALS TO COMPLY WITH CITY OF WICHITA SPECIFICATIONS AND STANDARDS.
  2. ALL ELEVATIONS SHOWN ARE CITY OF WICHITA DATA (UNLESS NOTED AS CITY DATA).
  3. THE CONTRACTOR SHALL LIMIT THE EXTENT OF TRENCH TO REMAIN OPEN OVERNIGHT AND MEASURES TO LESS THAN 50 FEET.
  4. AT LEAST 48 HOURS PRIOR TO BEGINNING EXCAVATION, IF REQUIRED, (EXCLUDING WEEKENDS AND HOLIDAYS), THE CONTRACTOR SHALL CONTACT THE KANSAS ONE-CALL SYSTEM, A UTILITY LOCATION SERVICE, AT (316) 687-2470 TO REQUEST THE FOLLOWING UTILITY COMPANIES TO LOCATE ANY EXISTING LINES WITHIN THE PROJECT AREA: AIR SERVICE COMPANY, KANSAS POWER AND LIGHT COMPANY, AIR SERVICE COMPANY, KANSAS POWER AND LIGHT COMPANY, AIR SERVICE COMPANY, KANSAS POWER AND LIGHT COMPANY.
  5. UNDERGROUND UTILITY SERVICE LINES AND OVERHEAD UTILITY POLE LINES ARE TO BE PROTECTED AS NECESSARY BY OTHERS PRIOR TO CONSTRUCTION UNLESS THE PLANS SPECIFICALLY CALL FOR THEIR REMOVAL BY THE CONTRACTOR. THE CONTRACTOR SHALL BE RESPONSIBLE FOR OBTAINING ALL NECESSARY PERMITS AND SHALL BE RESPONSIBLE FOR THE BEST INFORMATION OBTAINABLE FOR DESIGN. THE CONTRACTOR WILL BE REQUIRED TO MARK AROUND EXISTING UTILITIES WITHIN THE RIGHT-OF-WAY WHICH DO NOT COMPLY WITH PROPOSED CONSTRUCTION.
  6. THE CONTRACTOR SHALL BE RESPONSIBLE FOR PRESERVING PROPERTY TREES. THE CONTRACTOR SHALL BE REQUIRED TO RE-ESTABLISH ANY PROPERTY TREES WHICH ARE DAMAGED OR DESTROYED BY HIS CONSTRUCTION OPERATIONS. SUCH TREES SHALL BE RE-ESTABLISHED BY A LICENSED LAND SURVEYOR OR A LICENSED PROFESSIONAL ENGINEER IN ACCORDANCE WITH STATE LAWS. ALL COSTS FOR THIS WORK SHALL BE SUBSTANTIAL TO THE OTHER TIPS OF WORK.
  7. ALL EXCESS EXCAVATED MATERIAL FROM THIS PROJECT SHALL BE WAGGED AS DIRECTED OR APPROVED BY THE ENGINEER. NO EXCESS MATERIAL SHALL BE PLACED WITHIN STREET RIGHTS-OF-WAY. THE CONTRACTOR SHALL CONTACT THE DEVELOPER FOR INFORMATION PERTAINING TO ACCEPTABLE LOADS AND FOR THE PROPER DISPOSAL OF EXCESS MATERIAL. EXCESS MATERIAL SHALL BE STORED AND COVERED TO PREVENT THIS WORK SHALL BE SUBSTANTIAL TO OTHER BID TIPS.
  8. CONTRACTOR SHALL PROVIDE POSITIVE DRAINAGE AWAY FROM ALL MANHOLE COVERS.
  9. PVC PIPE WITH COATED JOINTS MAY BE USED PROVIDED THAT NO PIPE JOINT BE MORE THAN 10 FEET EITHER DIRECTION FROM THE 12\"/>



APPROVED AS NOTED  
BY CITY ENGINEER OF WICHITA  
Sanitary Sewer  
Shallow Manhole  
Directly Applicable

NOTE: CONTRACTOR SHALL BE RESPONSIBLE FOR OBTAINING ALL NECESSARY PERMITS AND SHALL BE RESPONSIBLE FOR THE BEST INFORMATION OBTAINABLE FOR DESIGN. THE CONTRACTOR WILL BE REQUIRED TO MARK AROUND EXISTING UTILITIES WITHIN THE RIGHT-OF-WAY WHICH DO NOT COMPLY WITH PROPOSED CONSTRUCTION.

**PROFESSIONAL ENGINEERING CONSULTANTS, P.A.**  
ENGINEERS  
WICHITA, KANSAS

CITY OF WICHITA, KANSAS  
MICHAEL E. LINDBAK P.E. CITY ENGINEER  
SANITARY SEWER IMPROVEMENTS

PRIVATE SANITARY SEWER TO SERVE  
SOUTH 1/2 LOT I, BLOCK I E.E. JABES ADDN

Designed by DLM Job No. 34-86584  
Drawn by G17 Date October, 1986

C.O.W. No. 468-76-245-80001-000-000-092

FILED FROM THE BEST  
AVAILABLE COPY.....