

PLANS FOR
SANITARY SEWER EXTENSIONS
 TO
EAGLE LAKE ADDITION PHASE I
 BEL AIRE, SEDGWICK COUNTY
 1985
 SE 1484

CITY OF WICHITA PROJECT NO. 468-76-245-80001-000-000-006

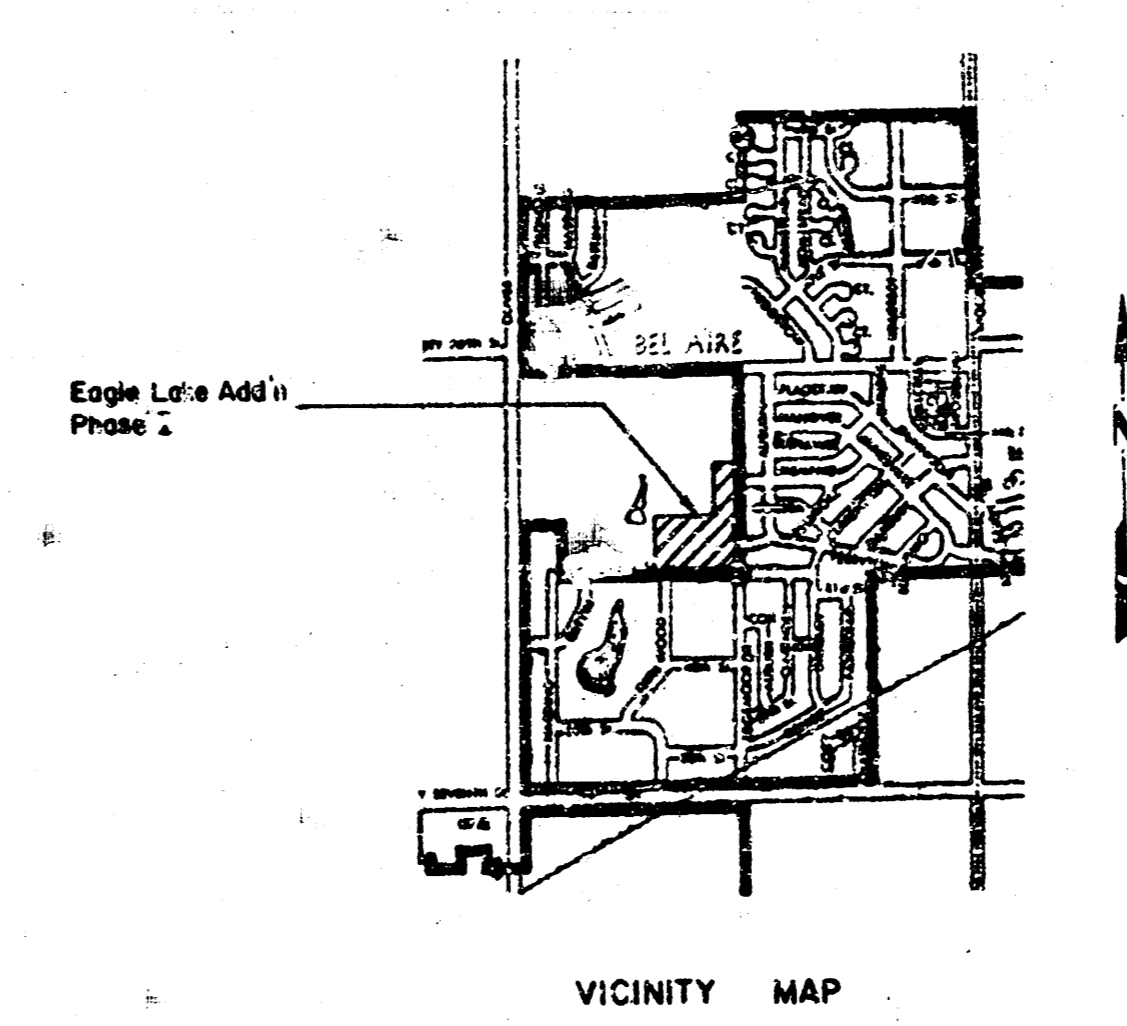
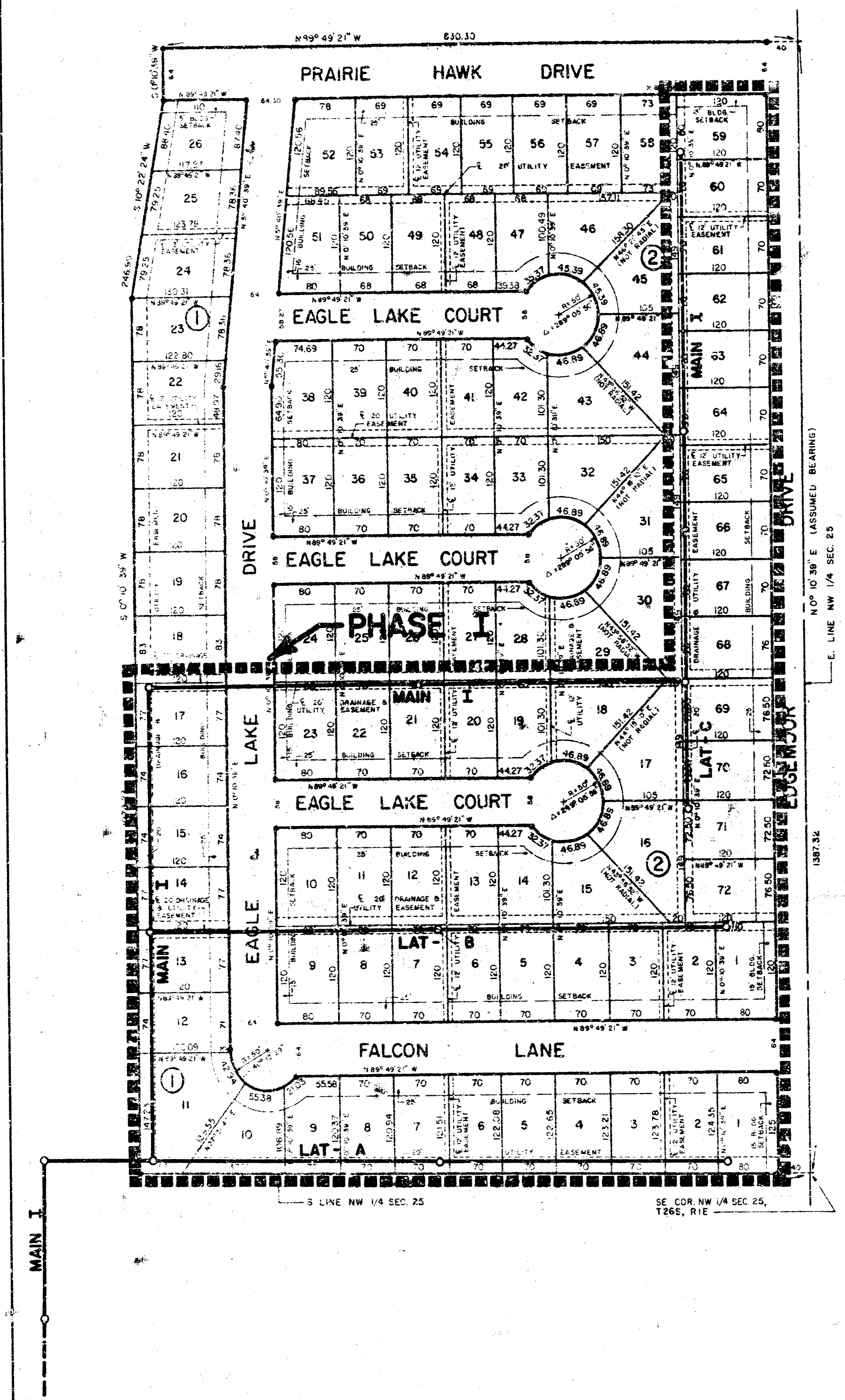
APPROVED AND NOTED
 By City Engineer
 Sanitary Sewer Extensions
 Storm Sewer
 Drawn by P. J. G. G. G.
 Revisions at 1/12/85

CONTRACTOR
 This project will be completed under
 the supervision of the City Engineer
 and conform to the specifications
 of the City of Wichita, Kansas
 TRACTOR WORKS, INC. OF WICHITA
 for all tests and inspection.

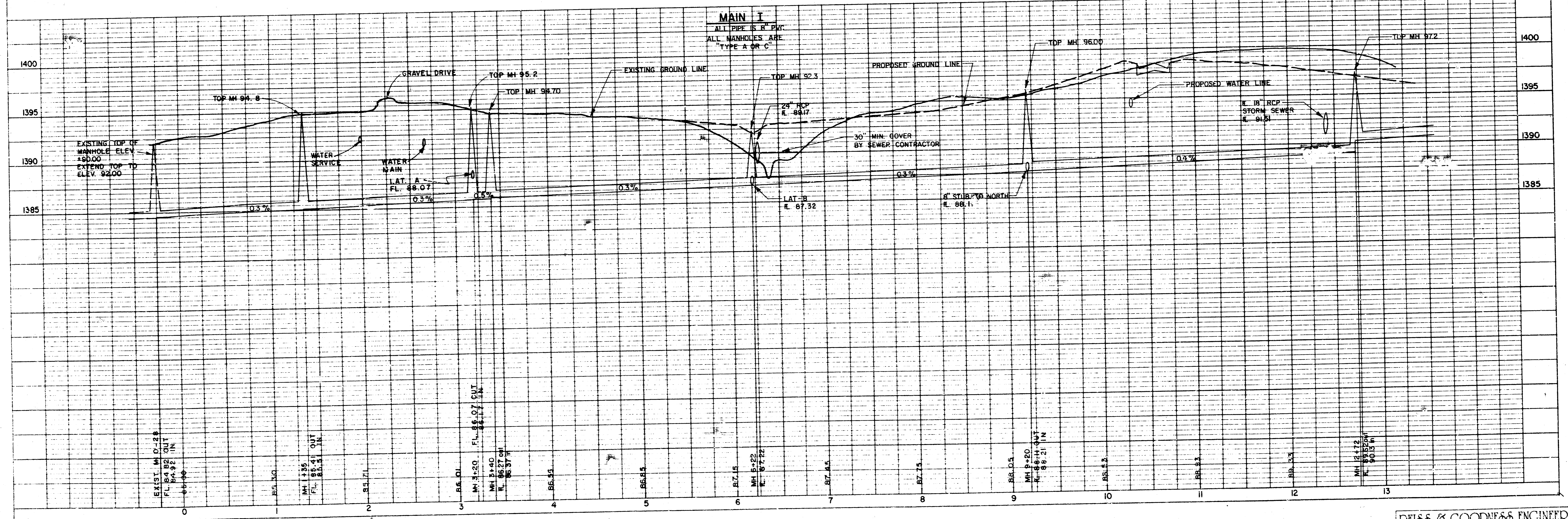
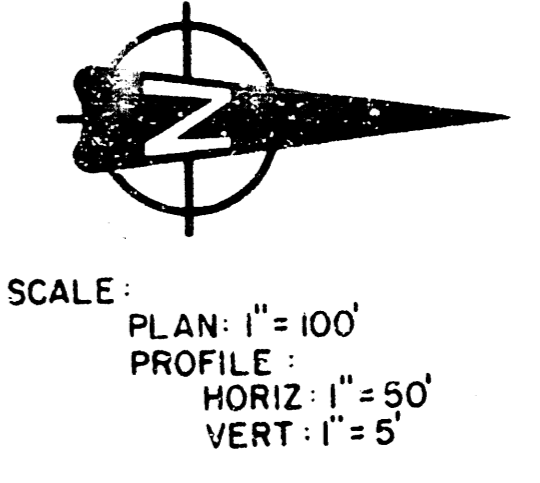
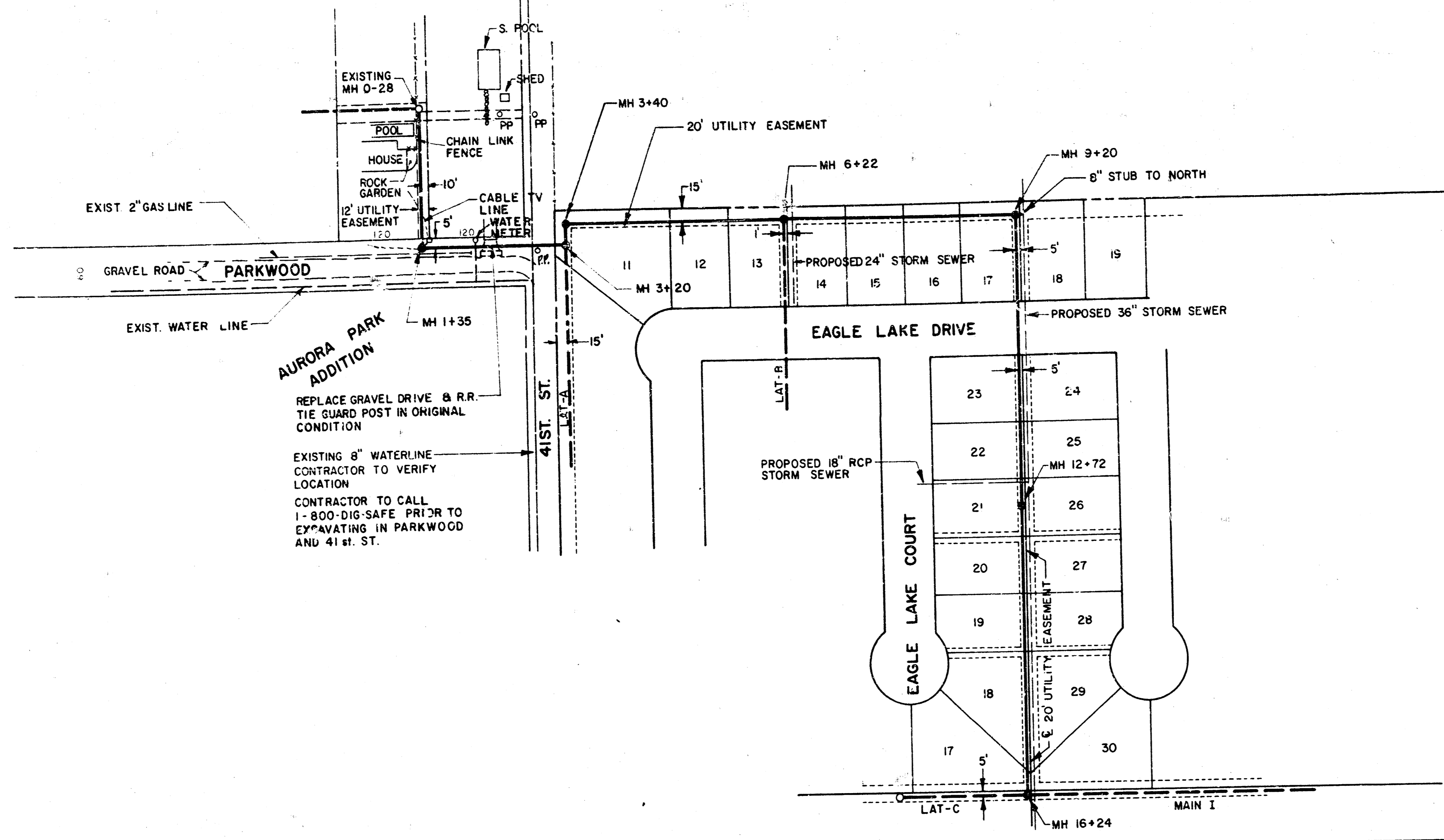
BENCHMARK:
 CITY DISK ON WEST END
 SOUTH HUBGUARD BRIDGE APPROX.
 200' E. OF OLIVER ON 45TH ST. NORTH.
 ELEV. 1398.88 U.S.G.S.
 FOR CITY DATUM SUBTRACT 1187.4 FEET
 FROM GIVEN BENCHMARK ELEVATION

DESS & GOODNESS ENGINEERS SCALE GIVEN
 2400 WEST 21ST STREET DATE 2-15-85
 WICHITA, KANSAS 67203 PROJECT SE 1484
 (913) 832-0225 SHEET 1 OF 8

FILMED FROM THE BEST
 AVAILABLE COPY.....



VICINITY MAP



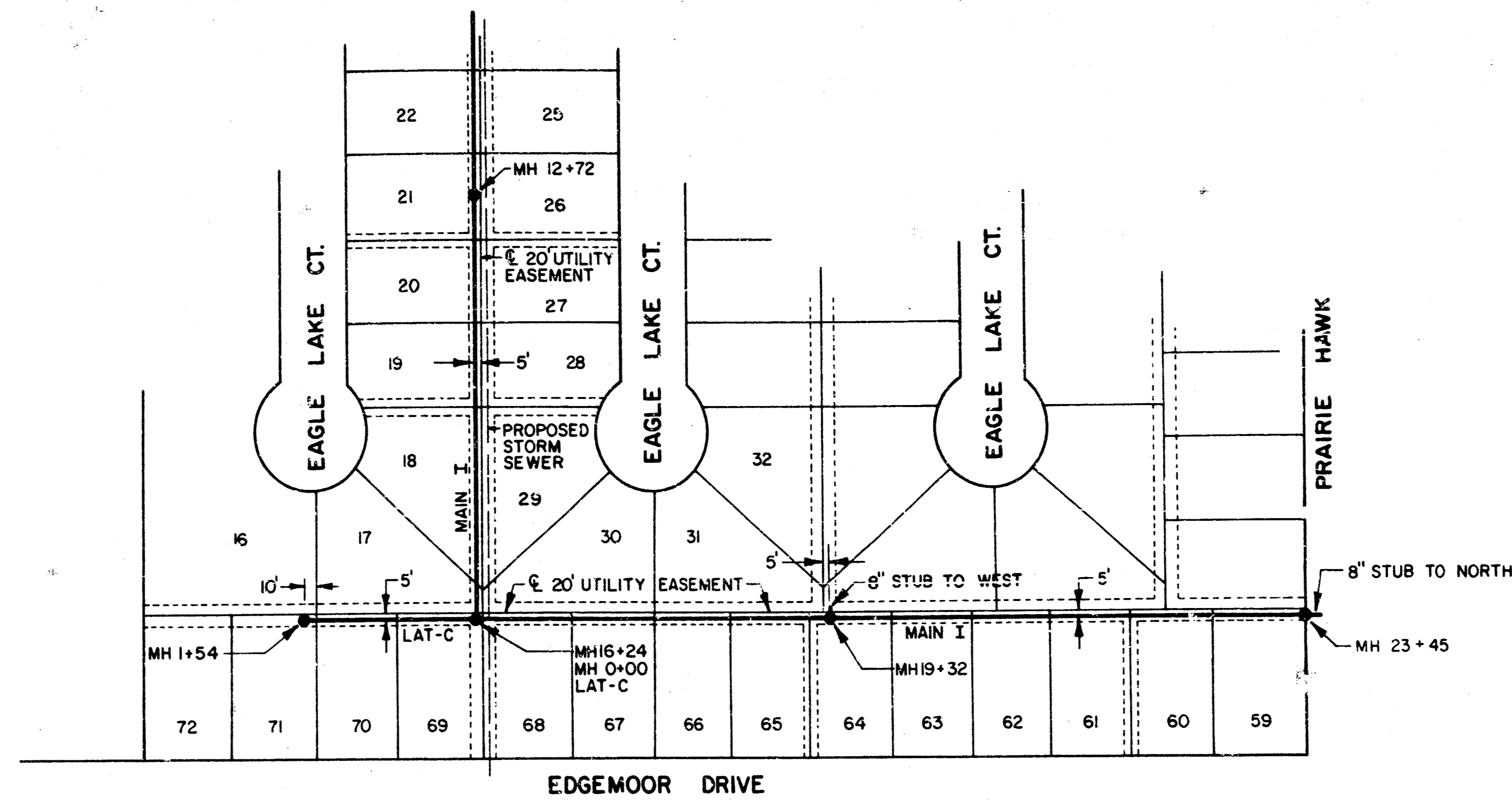
SANITARY SEWER EXTENSIONS

EAGLE LAKE ADDN. BEL AIRE, KANSAS

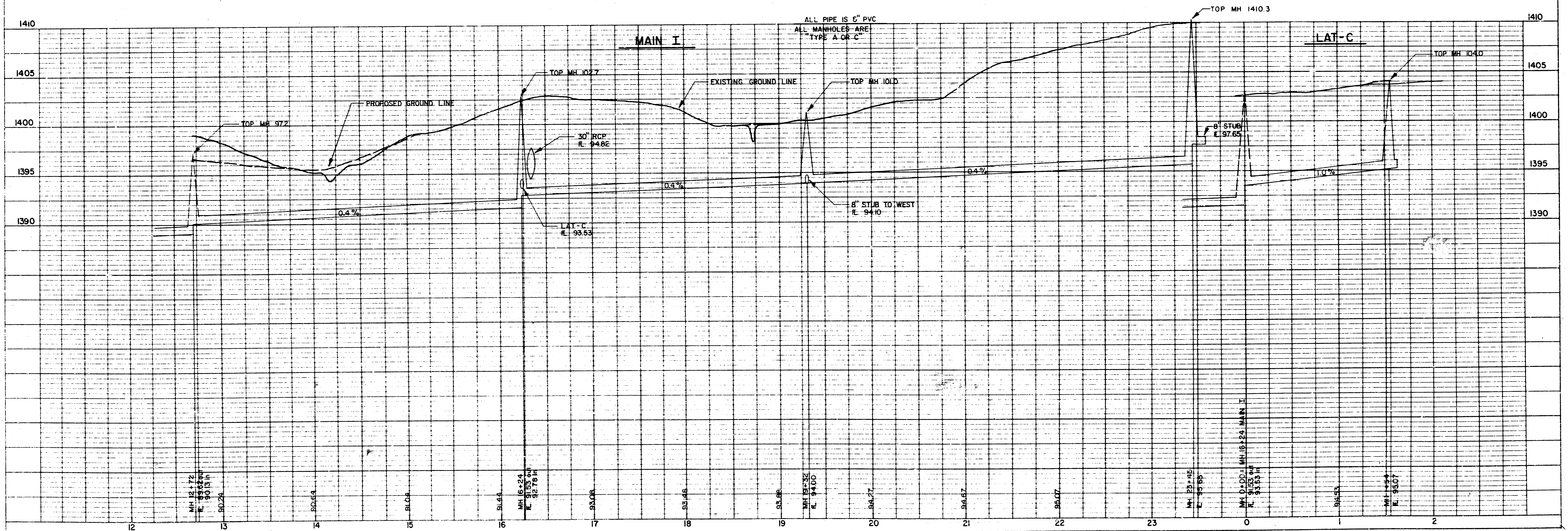
REISS & GOODNESS ENGINEERS
2160 WEST 21ST STREET
WICHITA, KANSAS 67203
(316) 832 0213

SCALE GIVEN PROJECT NO.
DATE 2-15-85 SE 1488
SHEET 2 OF 8

FILMED FROM THE BEST AVAILABLE COPY



SCALE: PLAN: 1" = 100'
 PROFILE: 1" = 50'
 VERT: 1" = 5'



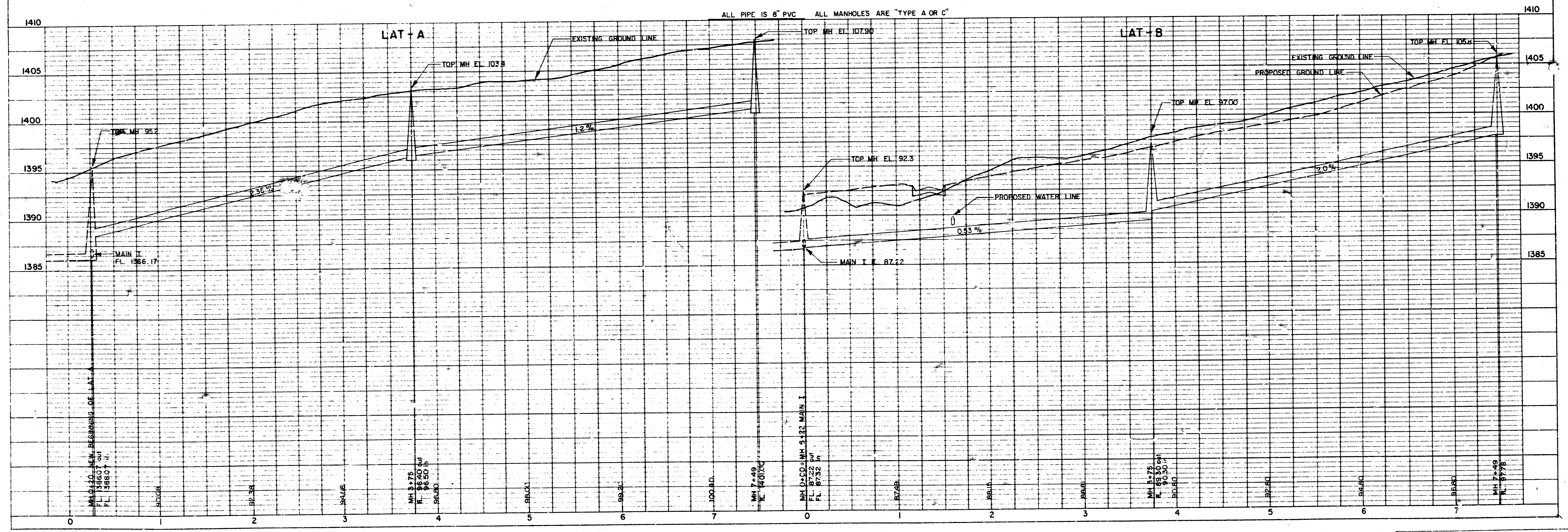
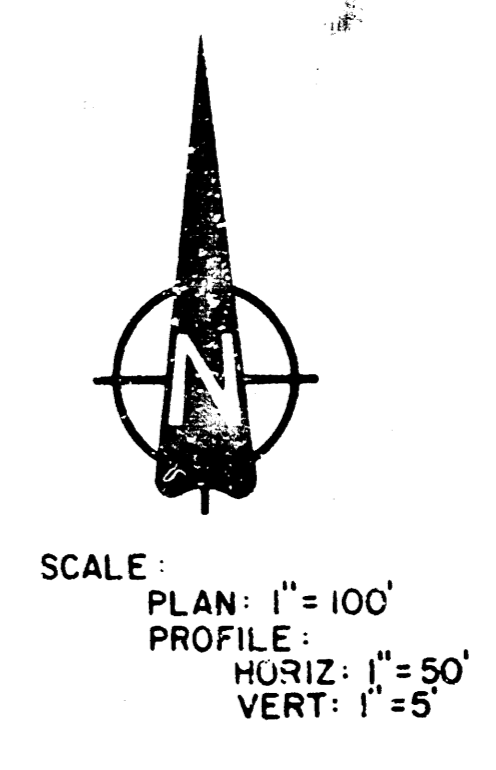
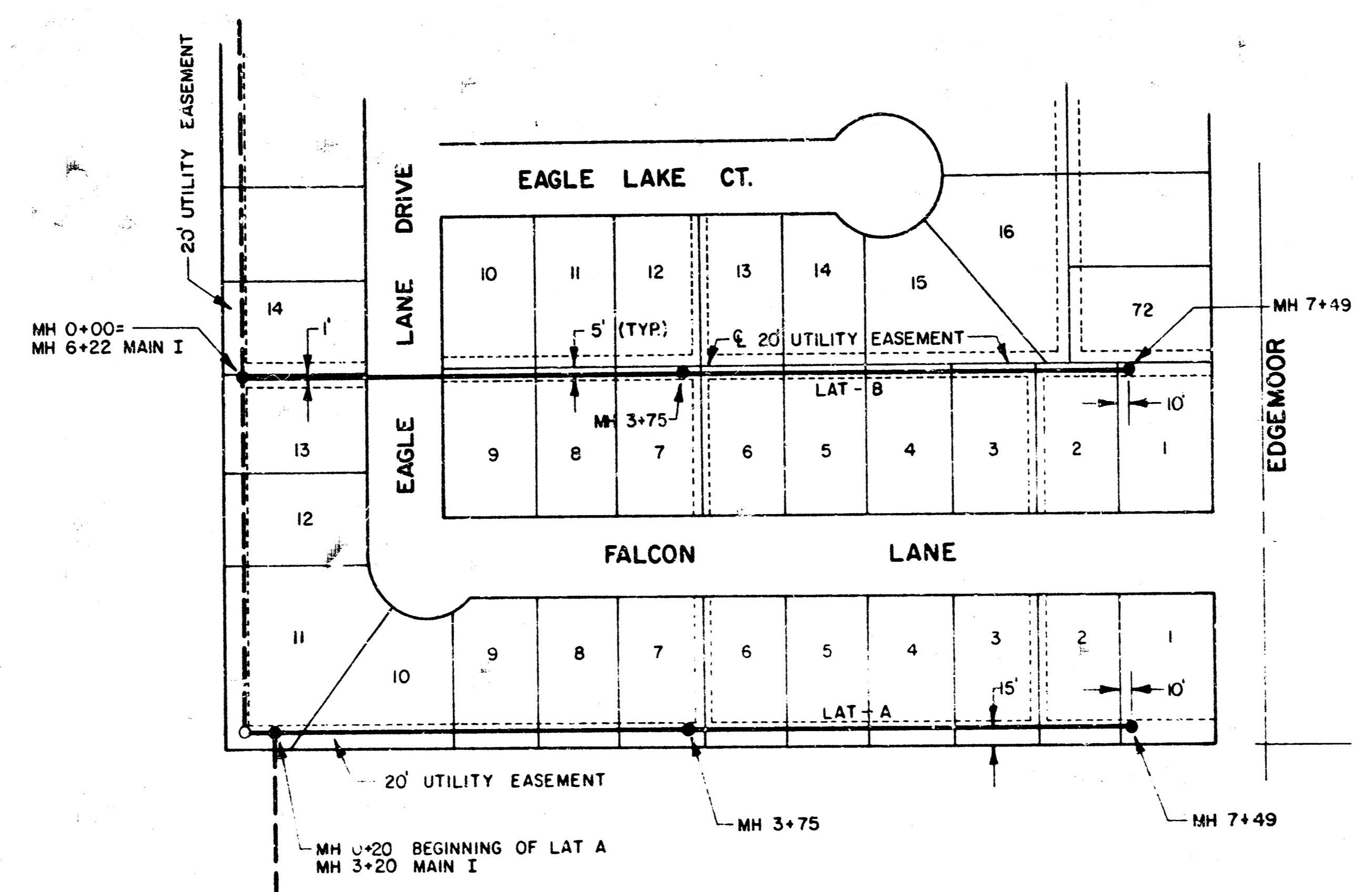
REISS & GOODNESS ENGINEERS
 2160 WEST 21ST STREET
 WICHITA, KANSAS 67203
 (316) 632-0713

SANITARY SEWER EXTENSIONS

EAGLE LAKE ADDN. BEL AIRE, KANSAS

SCALE GIVEN PROJECT NO.
 DATE 2-15-85 SHEET 3 OF 8

FILMED FROM THE BEST AVAILABLE COPY



REISS & COODNESS ENGINEERS
 2160 WEST 21ST STREET
 WICHITA, KANSAS 67203
 (316) 832-0213

FILMED FROM THE BEST AVAILABLE COPY