

PLANS FOR SANITARY SEWER EXTENSIONS

TO EAGLE LAKE ADDITION PHASE II BEL AIRE, SEDGWICK COUNTY

SE1485
1986

CITY OF WICHITA PROJECT NO. 468 76 245 80001 000 000 051

INDEX OF SHEETS

- 1 - TITLE SHEET
- 2 - LAT. D AND LAT. E
- 3 - LAT. F AND MAIN I
- 4-8 DETAILS

APPROVED AS NOTED

By CITY ENGINEER OF WICHITA

Sanitary Sewers *DOB 2/13/86*

Storm Sewers _____

Driveway Approaches _____

Water Mains _____

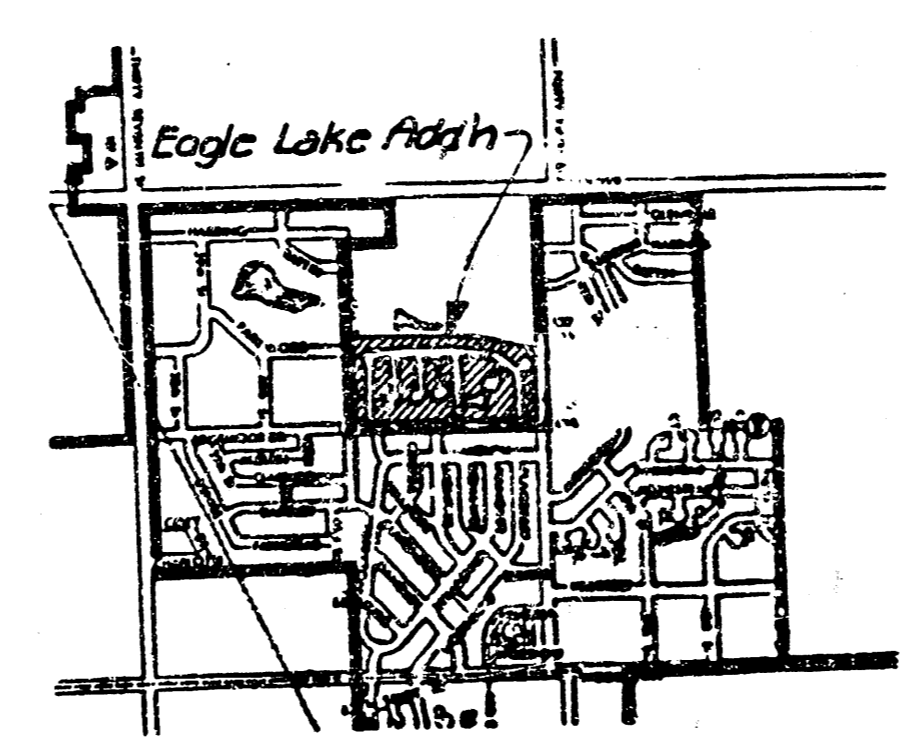
Paving _____

NOTE TO CONTRACTOR

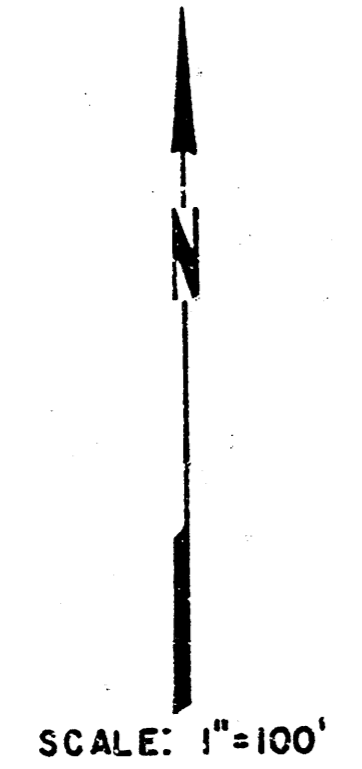
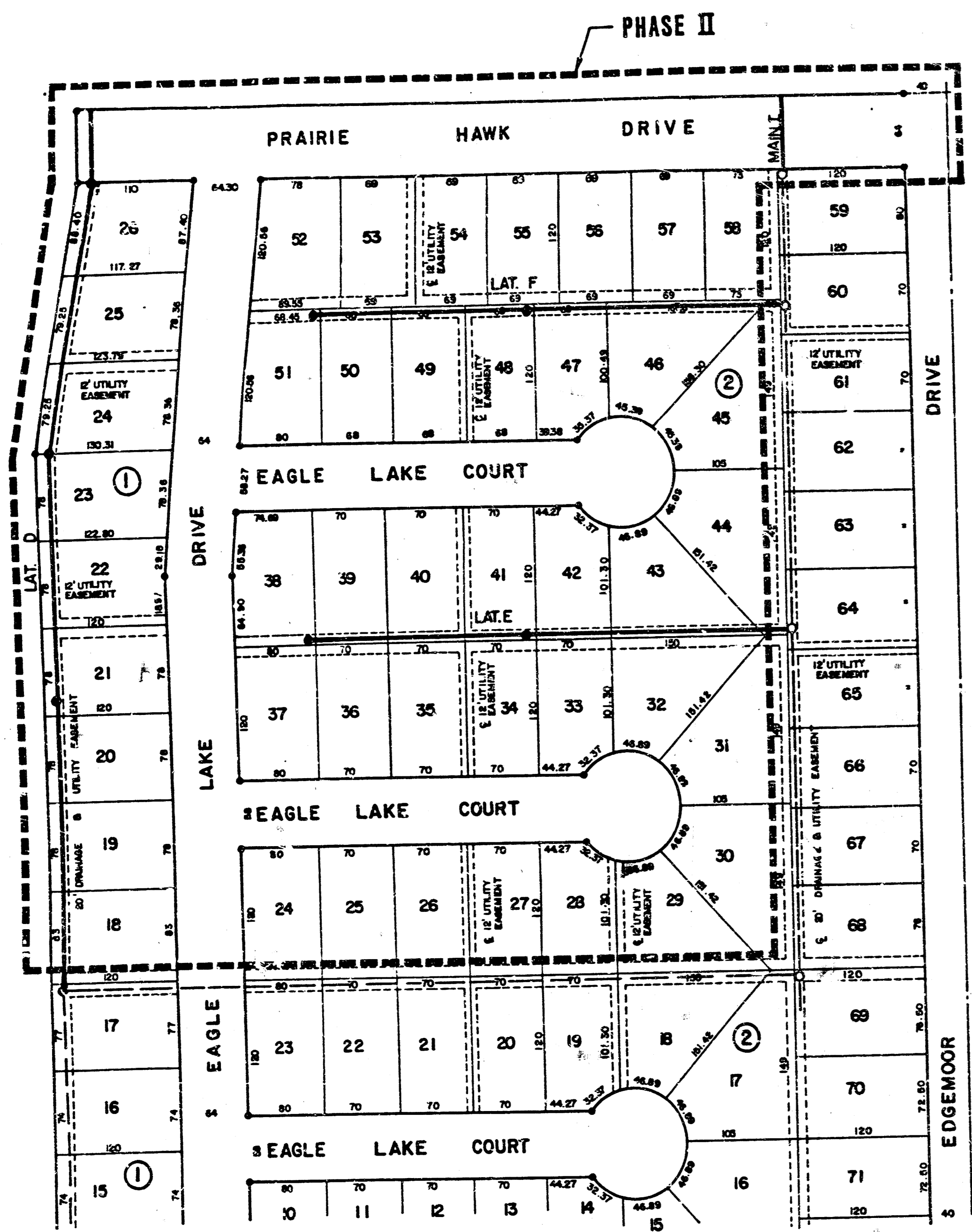
This project will be constructed under the supervision of the CITY ENGINEER and conforming to the SPECIFICATIONS of the CITY OF WICHITA. The CONTRACTOR will pay the City of Wichita for all costs of plan review, inspection and bookkeeping per contract.



REVISED 2/10/86
REISS & GOODNESS ENGINEERS
2100 WEST 21ST STREET
WICHITA, KANSAS 67203
(316) 52-0225



VICINITY MAP
N-3



SCALE: 1"=100'

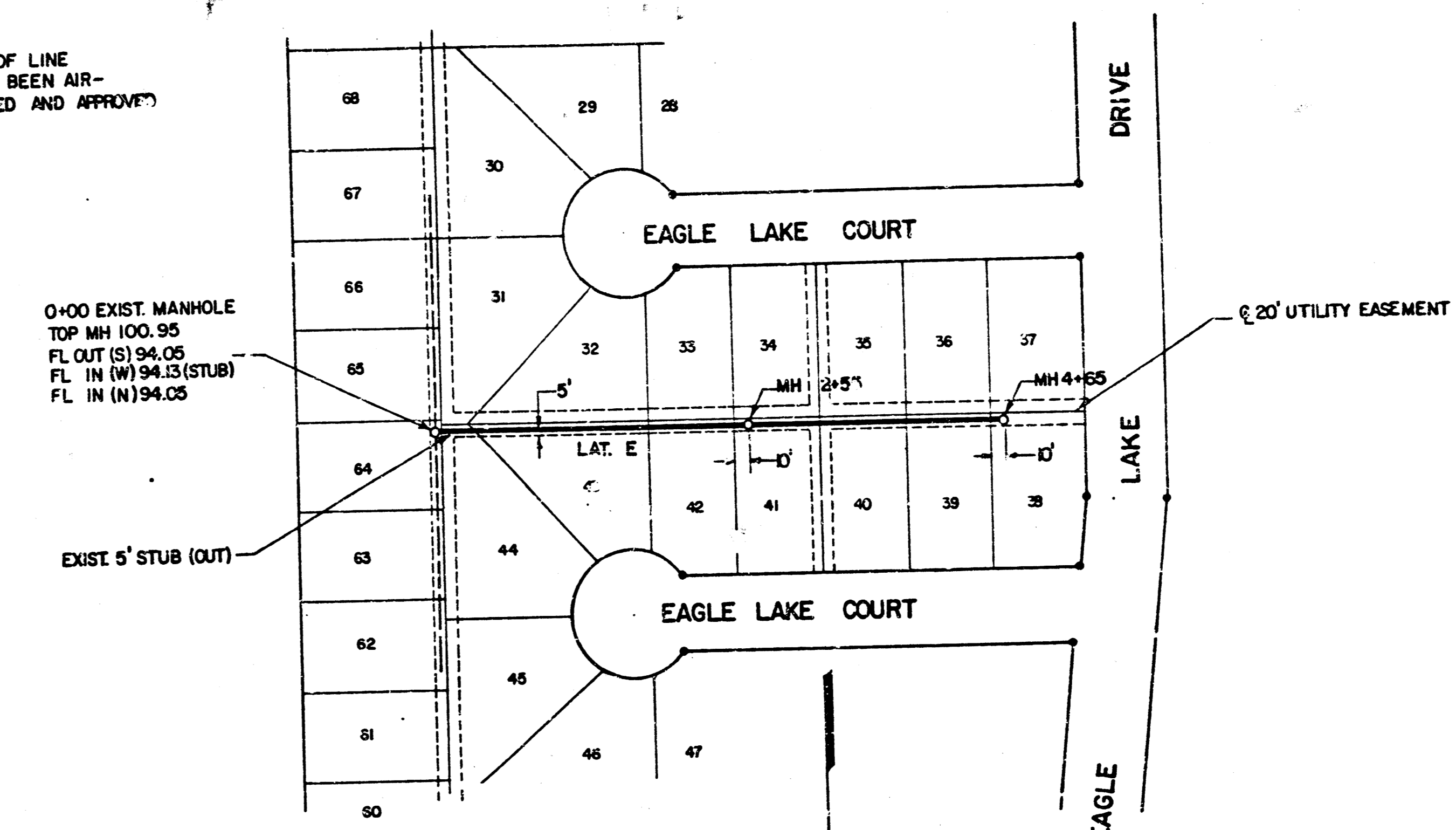
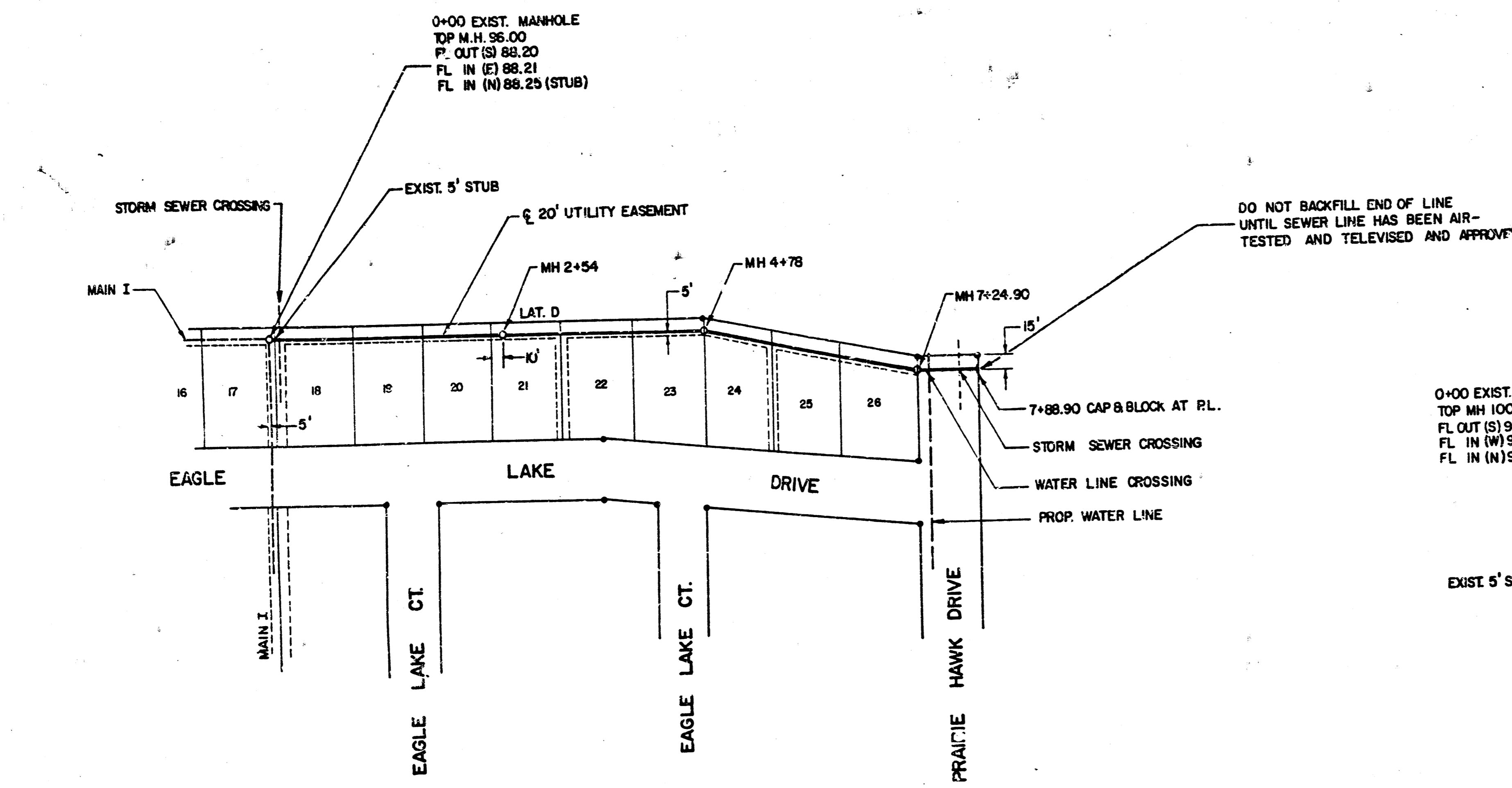
BM
"D" CUT IN SW COR. INLET BOX,
150' ± NO. OF E EAGLE LAKE COURT
EL. 1596.61 USGS

SCW - Standard

REVISION	DRAWN BY	CHECKED BY	DESIGNED BY	PROJECT

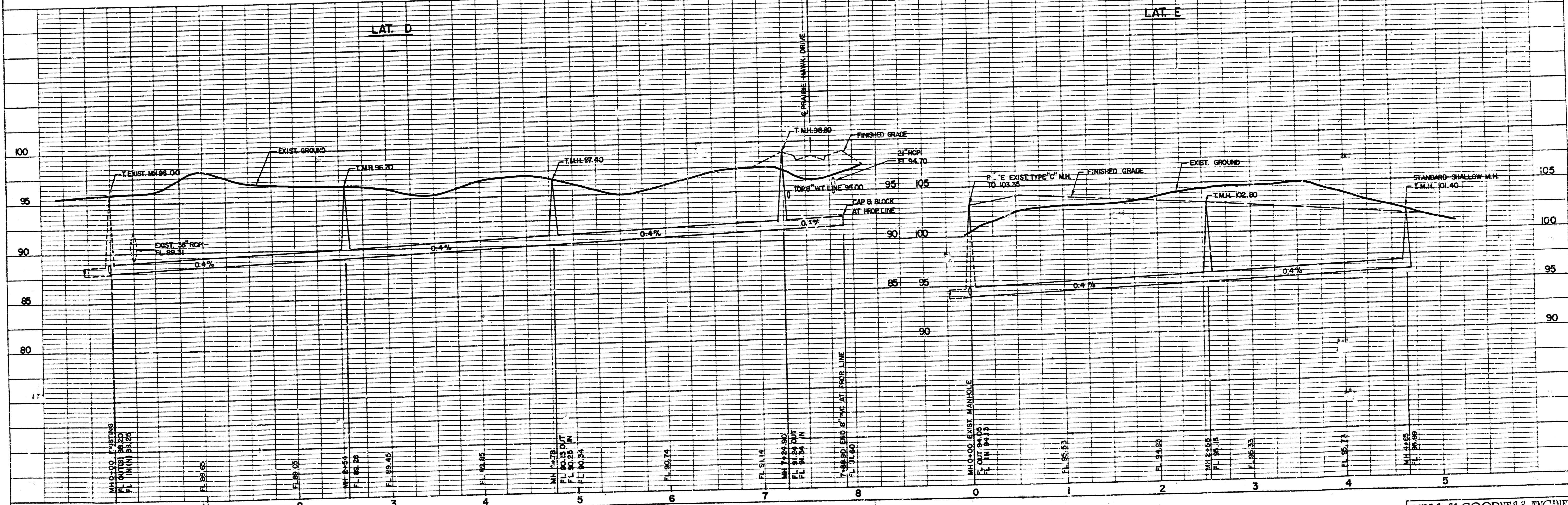
CUSTOMER	SCALE GIVEN	PROJECT NO.
	DATE 1/23/86	SE 1485
		SHEET 1 OF 8

FILMED FROM THE BEST AVAILABLE COPY.....



SCALE
 PLAN 1" = 100'
 PROFILE 1" = 50'
 HORIZ 1" = 50'
 VERT 1" = 5'

ALL PIPE IS 8" PVC
 ALL MANHOLES ARE TYPE "A" OR "C"



DEISS & GOODNESS ENGINEERS
 2100 WEST 91ST STREET
 WICHITA, KANSAS 67203
 (316) 332-0283

REVISION	DRAWN BY	CHECKED BY	DESIGNED BY	PROJECT

SANITARY SEWER EXTENSIONS LAT D & LAT E

CUSTOMER **EAGLE LAKE ADDITION PHASE II BEL AIRE, KANSAS**

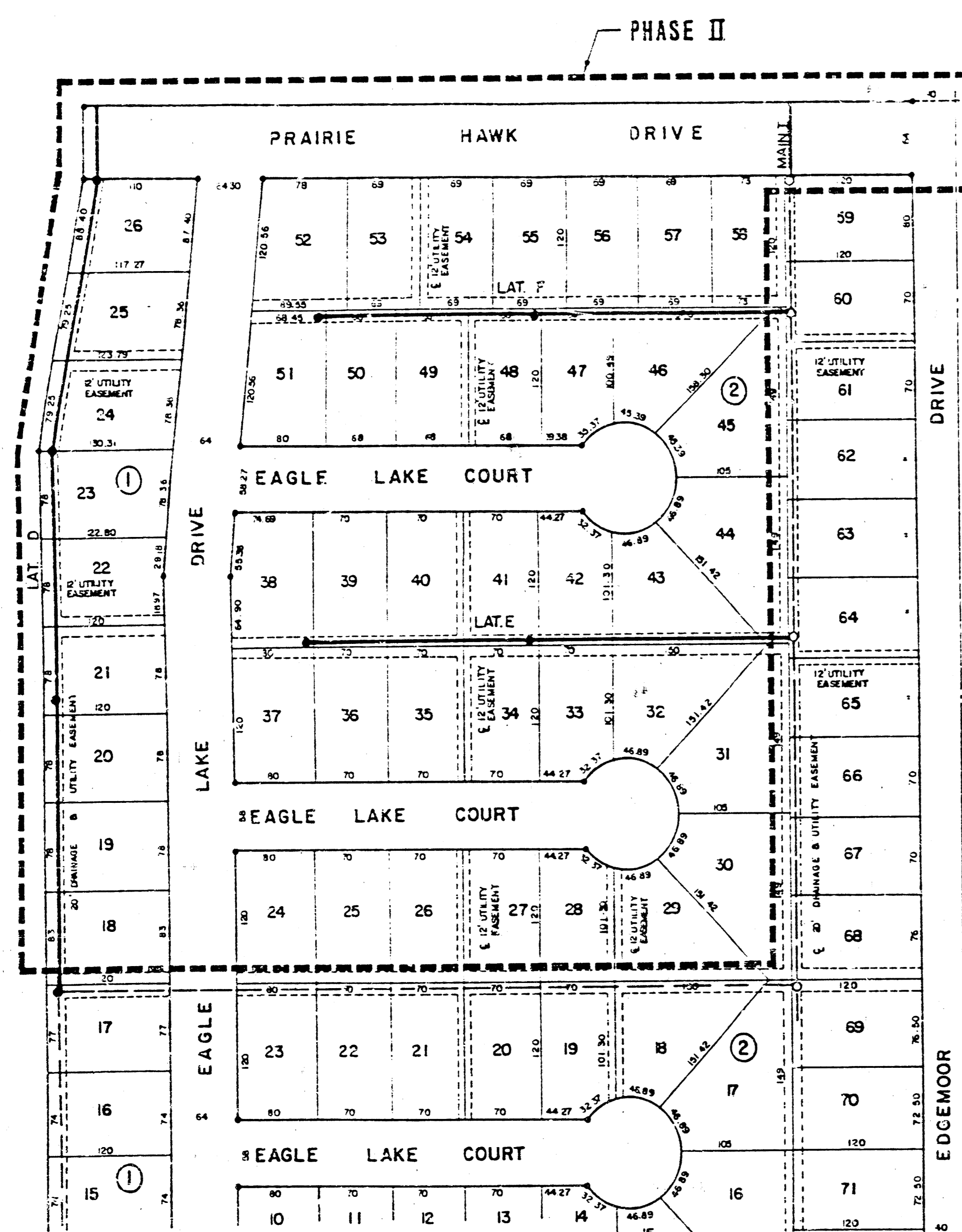
SCALE NOTED
 DATE 1/23/86
 PROJECT NO. SE 187
 SHEET 2

FILMED FROM THE BEST AVAILABLE COPY.....

PLANS FOR
SANITARY SEWER EXTENSIONS
 TO
EAGLE LAKE ADDITION PHASE II
 BEL AIRE, SEDGWICK COUNTY

SEI485
 1986

CITY OF WICHITA PROJECT NO. 468 76 245 80001 000 000 051



BM
 "C" CUT IN SW COR. INLET BOX,
 150' E. NO. OF @ EAGLE LAKE COURT
 EL. 1398.61 USGS

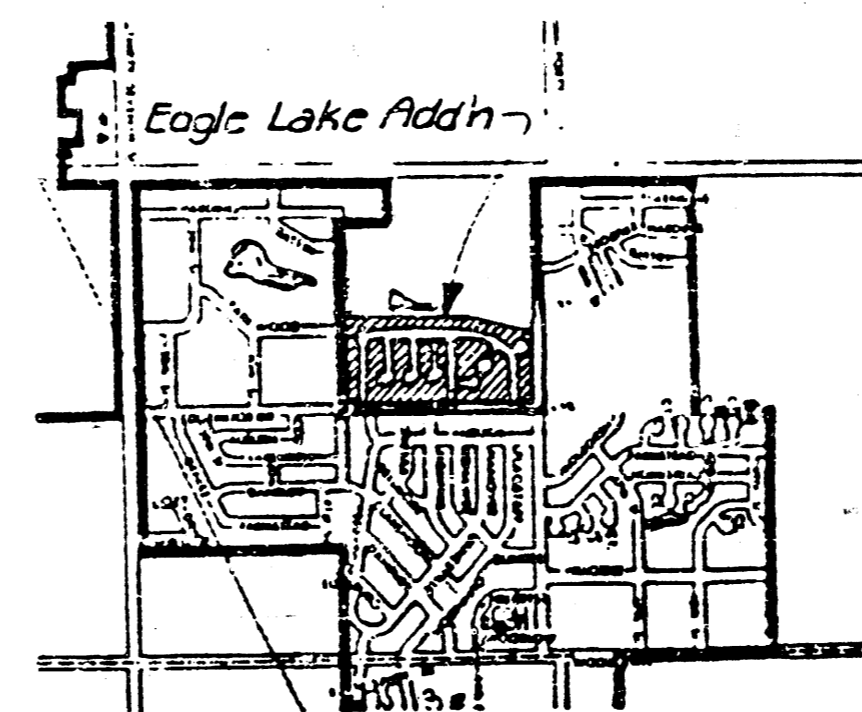
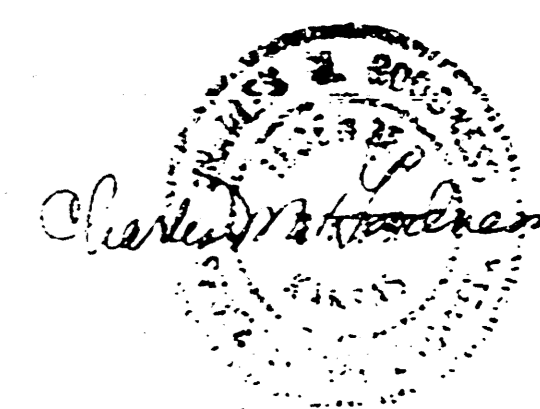
INDEX OF SHEETS

- 1 - TITLE SHEET
- 2 - LAT. D AND LAT. E
- 3 - LAT. F AND MAIN I
- 4-3 DETAILS

APPROVED FOR THE CITY OF WICHITA
 By CITY ENGINEER OF WICHITA
 Sanitary Sewer *1/23/86*
 Storm Sewer _____
 Drains _____
 Water Mains _____
 Paving _____

NOTE TO CONTRACTOR

This project will be constructed under the supervision of the CITY OF WICHITA and conforming to the specifications of the CITY OF WICHITA. The CITY OF WICHITA will pay the City of Wichita for the cost of the work inspected.



"AS BUILT"

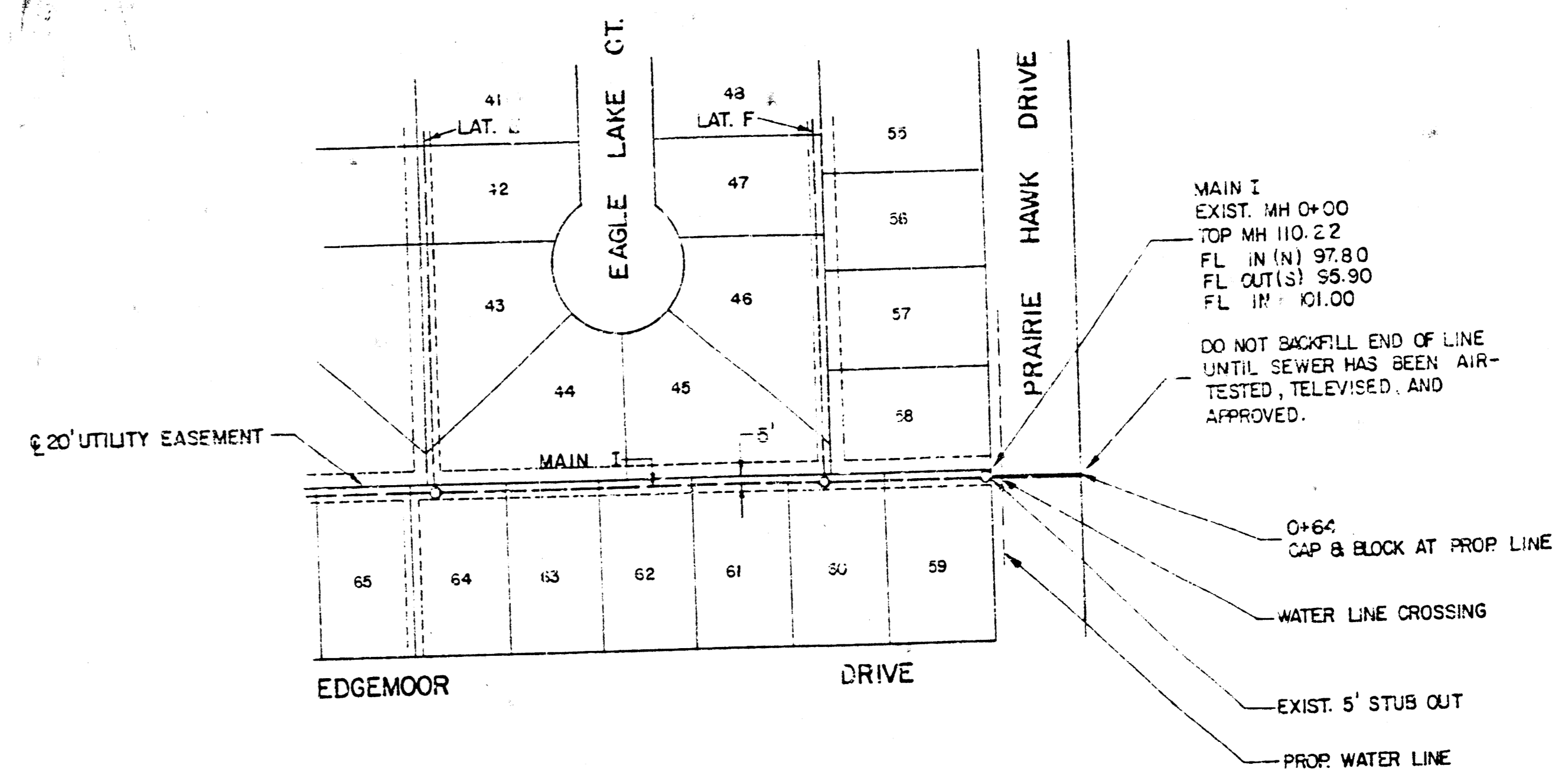
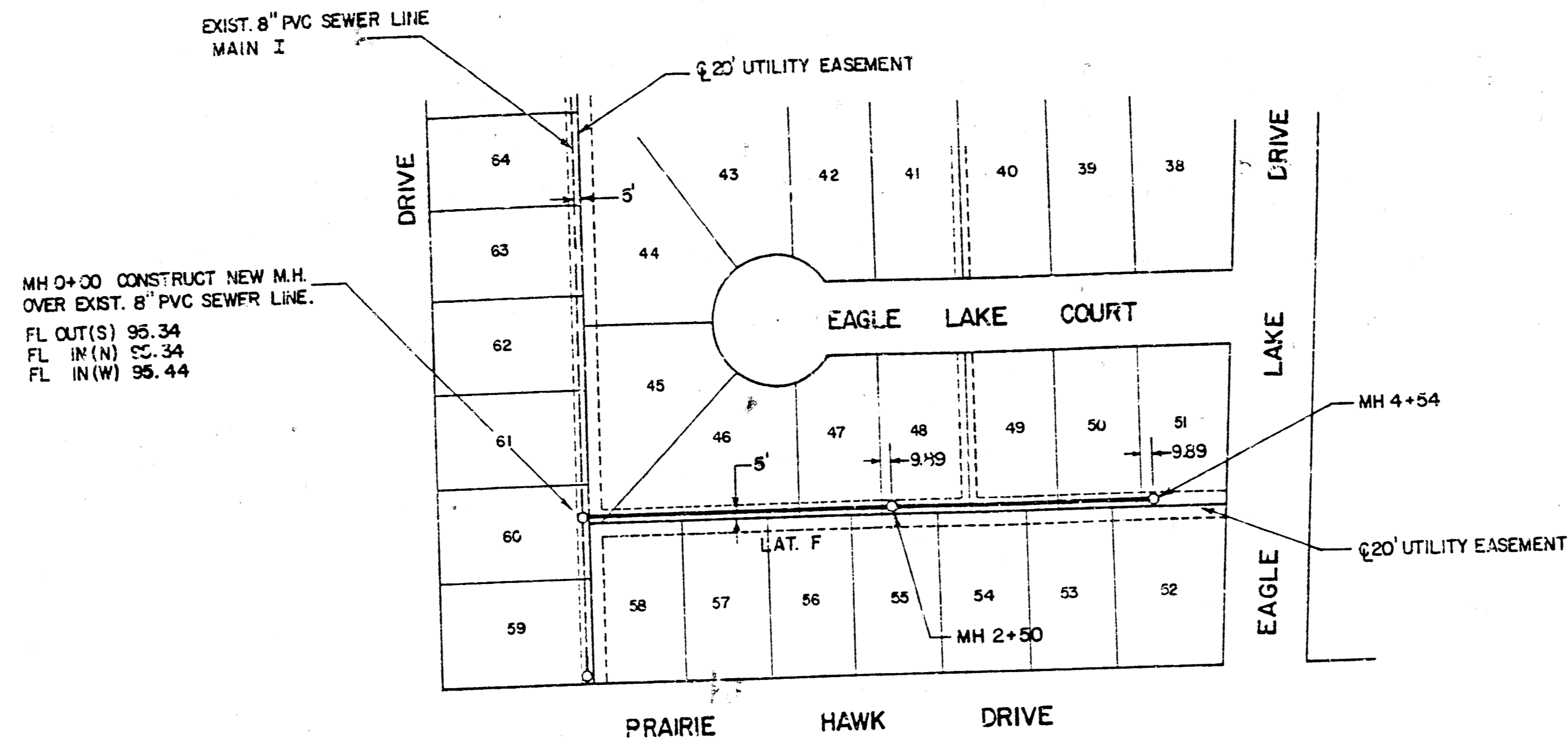
SCALE: 1"=100'

REVISED 2/10/86

REISS & GOODNESS ENGINEERS
 2100 WEST 21ST STREET
 WICHITA, KANSAS 67203
 (316) 832-0213

REVISION	DRAWN BY	CHECKED BY	DESIGNED BY	PROJECT	CUSTOMER	SCALE GIVEN	PROJECT NO. SEI485
						DATE 1/23/86	SHEET 1 OF 4

FILMED FROM THE BEST AVAILABLE COPY



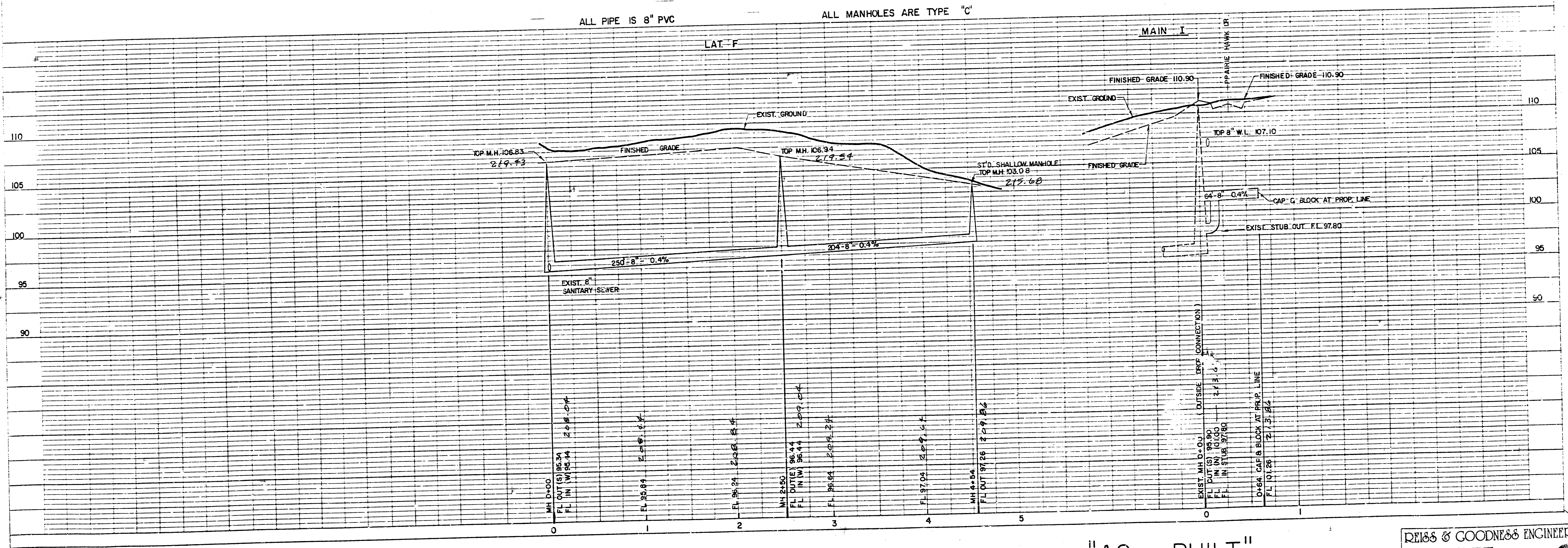
NOTE:
CONTRACTOR WILL CHECK F.L. GRADE(OUT) OF EXIST. PIPE BEFORE LAYING NEW PIPE AND MAKE ANY NECESSARY CHANGES IN GRADE

NOTE:
ADD 1300 TO ELEVATIONS SHOWN TO OBTAIN USGS ELEVATION

SCALE
PLAN 1"=100'
PROFILE HORIZ 1"=50'
VERT. 1"=5'

ALL PIPE IS 8" PVC

ALL MANHOLES ARE TYPE "C"



REISS & GOODNESS ENGINEERS
2160 WEST 21ST STREET
WICHITA, KANSAS 67203
(316) 832-0203

REVISION	DRAWN BY	CHECKED BY	DESIGNED BY	PROJECT	SANITARY SEWER EXTENSIONS LAT F & MAIN I	CUSTOMER	EAGLE LAKE ADDITION-PHASE II-BEL AIRE, KANSAS	SCALE GIVEN	PROJECT NO.
								DATE	1/24/86
								SHEET	6/8

FILMED FROM THE BEST AVAILABLE COPY.....