

PLANS FOR
SANITARY SEWER EXTENSIONS
 TO
EAGLE LAKE 2ND ADDITION
 BEL AIRE, SEDGWICK COUNTY
 1987
 SE 0787

CITY OF WICHITA PROJECT NO. 468-76-245-80001-000-000-134

APPROVED AS NOTED
 By CITY ENGINEER OF WICHITA
 Sanitary Sewers 9/13/87
 Storm Sewers _____
 Driveway Approaches _____
 Water Mains _____
 Paving _____

NOTE TO CONTRACTOR
 This project will be constructed under the supervision of the CITY ENGINEER and conforming to the SPECIFICATIONS of the CITY OF WICHITA. The CONTRACTOR will pay the City of Wichita for all costs of plan review, inspection and booking per contract.



Booked

INDEX OF SHEETS

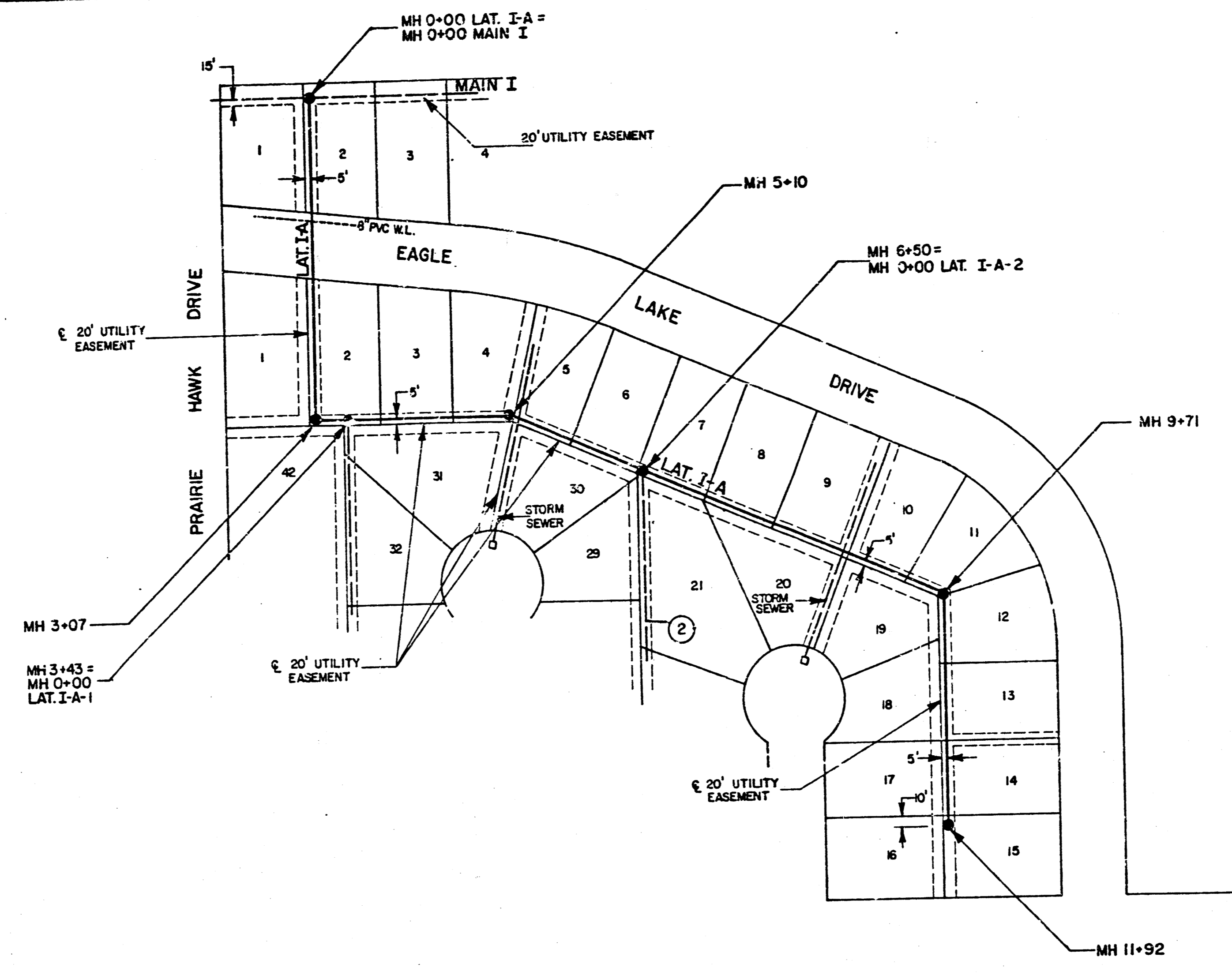
SHEET NO.	DESCRIPTION
1	TITLE SHEET
2	PLAN & PROFILE MAIN I & LAT. I-B
3	PLAN & PROFILE LAT. I-A
4	PLAN & PROFILE LAT. I-A-1 & LAT. I-A-2
5	MANHOLE DETAILS TYPE "C"
6	MANHOLE DETAILS TYPE "D"
7	MANHOLE DETAILS TYPE "P"
8	MANHOLE DETAILS RING & COVER

BENCHMARK:
 CITY DISK ON WEST END SOUTH HUBBARD BRIDGE APPROX. 200' E. OF OLIVER ON 45th ST. NORTH ELEV. 1398.88 U.S.G.S.
 FOR CITY DATUM - SUBTRACT 187.4 FEET FROM GIVEN BENCHMARK ELEV.

AS CONSTRUCTED
REISS & GOODNESS ENGINEERS
 2160 WEST 21st STREET
 WICHITA, KANSAS 67203
 (316) 832-0225

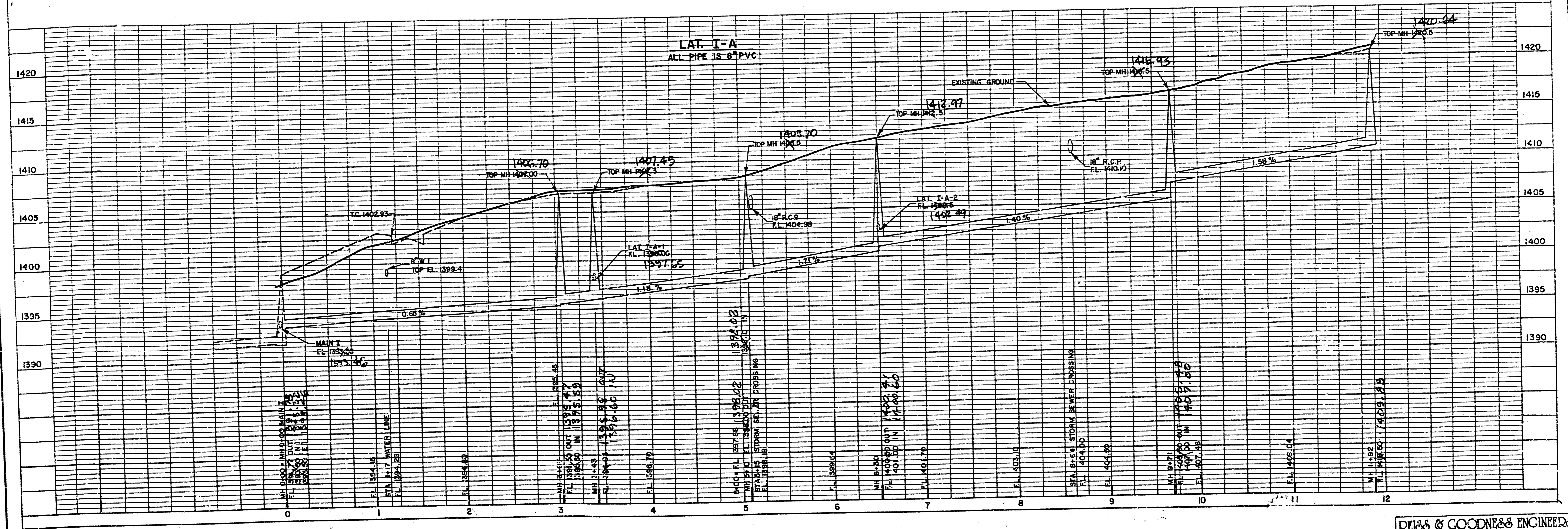
REVISION	DRAWN BY	CHECKED BY	DESIGNED BY	PROJECT	CUSTOMER	SCALE	PROJECT NO.
3/2/87						DATE 9/9/87	SHEET 1 OF 8

FILMED FROM THE BEST AVAILABLE COPY



SCALE
 PLAN 1" = 100'
 PROFILE HORIZ. 1" = 50'
 VERT. 1" = 5'

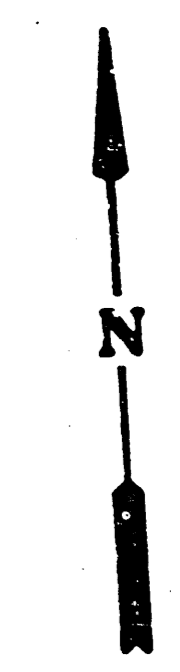
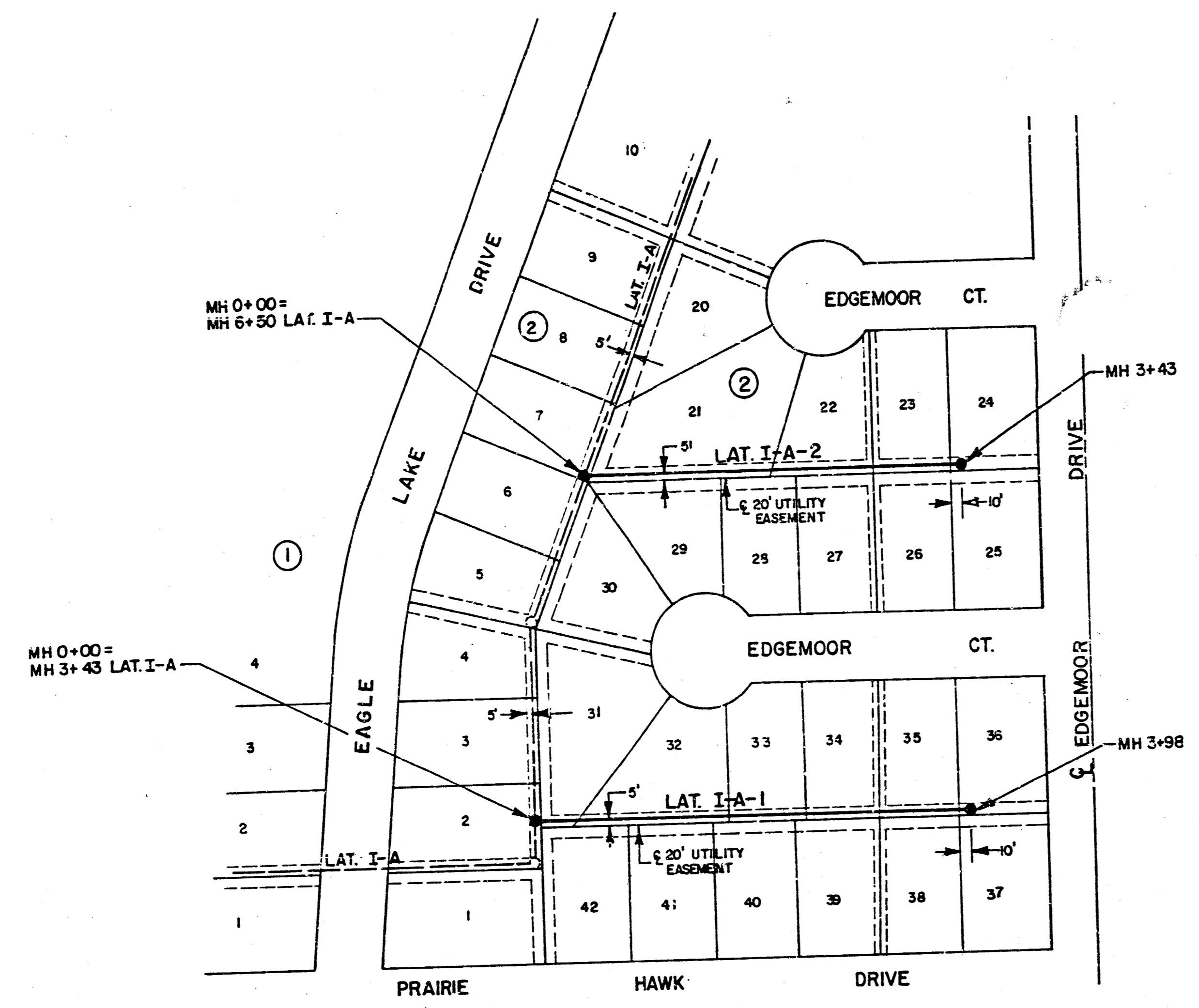
NOTE:
 ALL MANHOLES ARE STANDARD



DEISS & GOODNESS ENGINEERS
 2100 WEST 21ST STREET
 WICHITA, KANSAS 67203
 (316) 532-0253

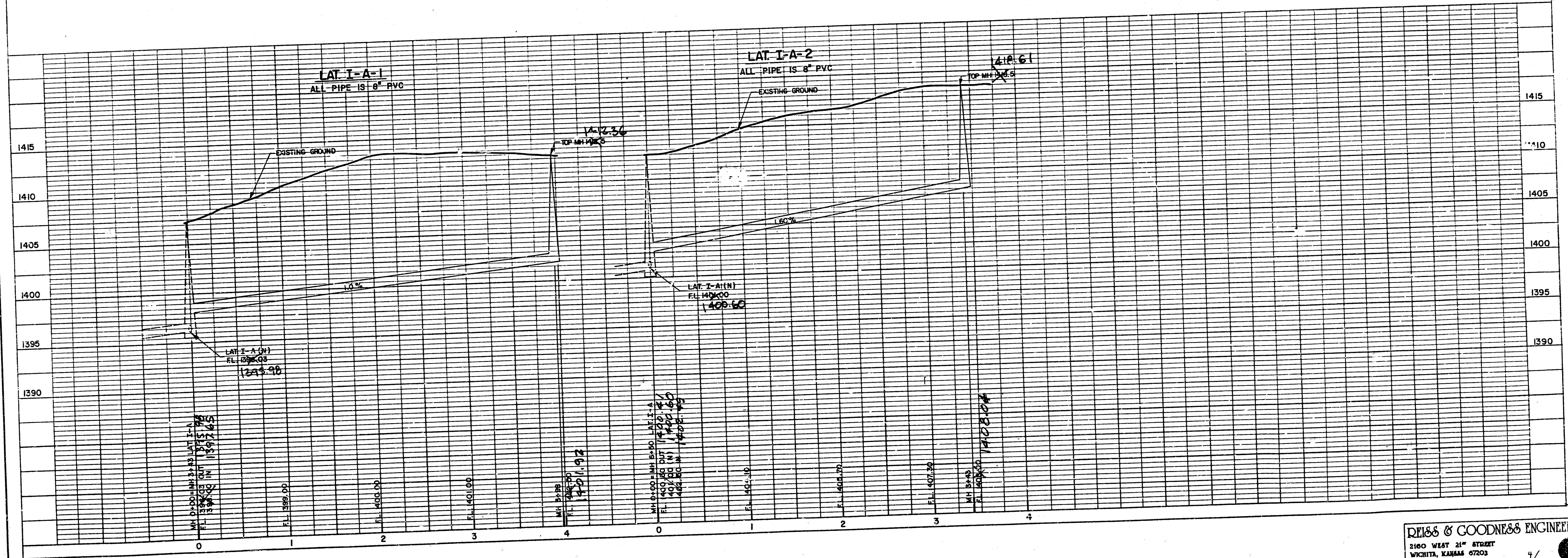
REVISION	DRAWN BY	CHECKED BY	DESIGNED BY	PROJECT	SANITARY SEWER EXTENSIONS	LAT. I-A	CUSTOMER	EAGLE LAKE 2nd. ADDITION - BEL AIRE - SEDGWICK COUNTY, KANSAS	SCALE/NOTED	DATE 9/9/87	PROJECT NO. SE 0787	SHEET 3 OF 3
----------	----------	------------	-------------	---------	---------------------------	----------	----------	---	-------------	-------------	---------------------	--------------

FILMED FROM THE BEST AVAILABLE COPY



SCALE
 PLAN 1"=100'
 PROFILE HORIZ. 1"=50'
 VERT. 1"=5'

NOTE:
 ALL MANHOLES ARE STANDARD



REISS & GOODNESS ENGINEERS
 2100 WEST 21ST STREET
 WICHITA, KANSAS 67203
 (316) 832-0233

SANITARY SEWER EXTENSIONS					LAT I-A-1 & LAT I-A-2					EAGLE LAKE 2nd. ADDITION - BEL AIRE - SEDGWICK COUNTY, KANSAS				
REVISION	DRAWN BY	CHECKED BY	DESIGNED BY	PROJECT	SCALE NOTED	DATE	9/9/87	PROJECT NO.	0787	SHEET	4	OF	8	

FILMED FROM THE BEST AVAILABLE COPY