

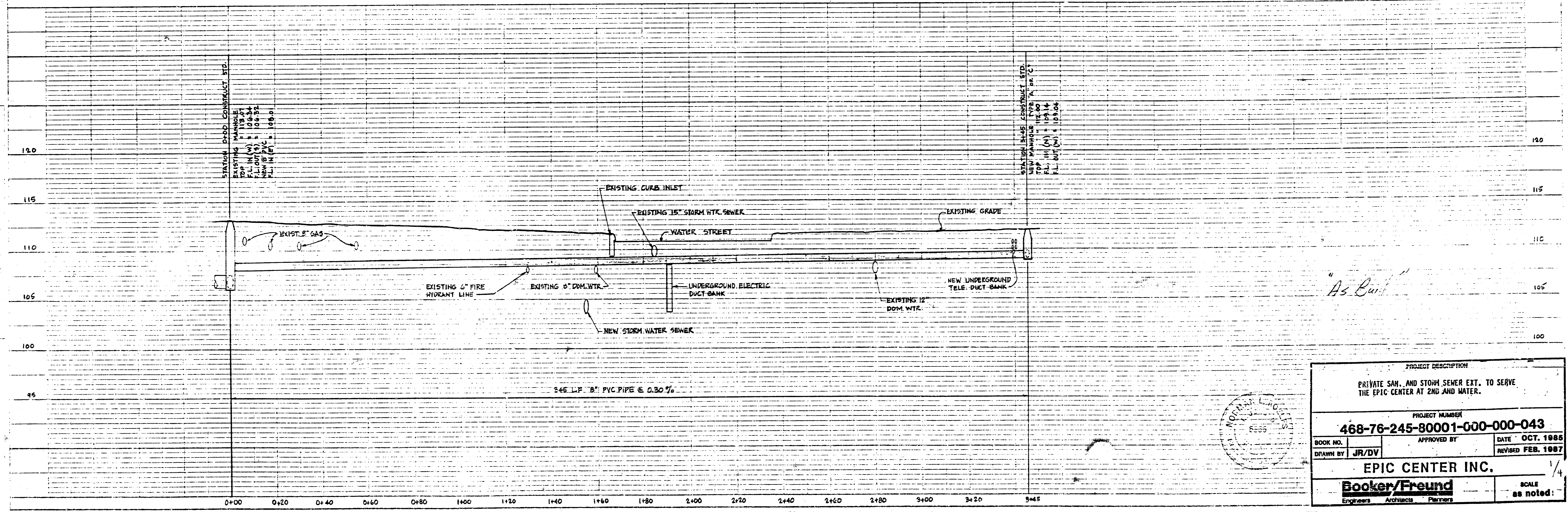
**MECHANICAL SITE PLAN**



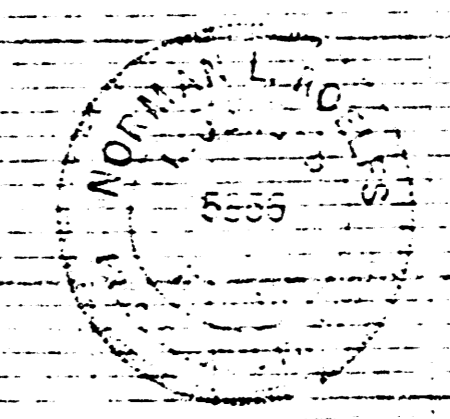
1" = 40'-0"

- BENCH MARK: 1. N.E. Cor. Conc. Base, Railroad Control Box, S.W. Cor., Wichita St. & 3rd St. Elev. 114.07 City Datum.  
 2. "a" on Back of Walk on N. 1st St. 5' E. of E. Line Main St. Elev. 112.71 City Datum.

LOCATION PLAN



*As Built*

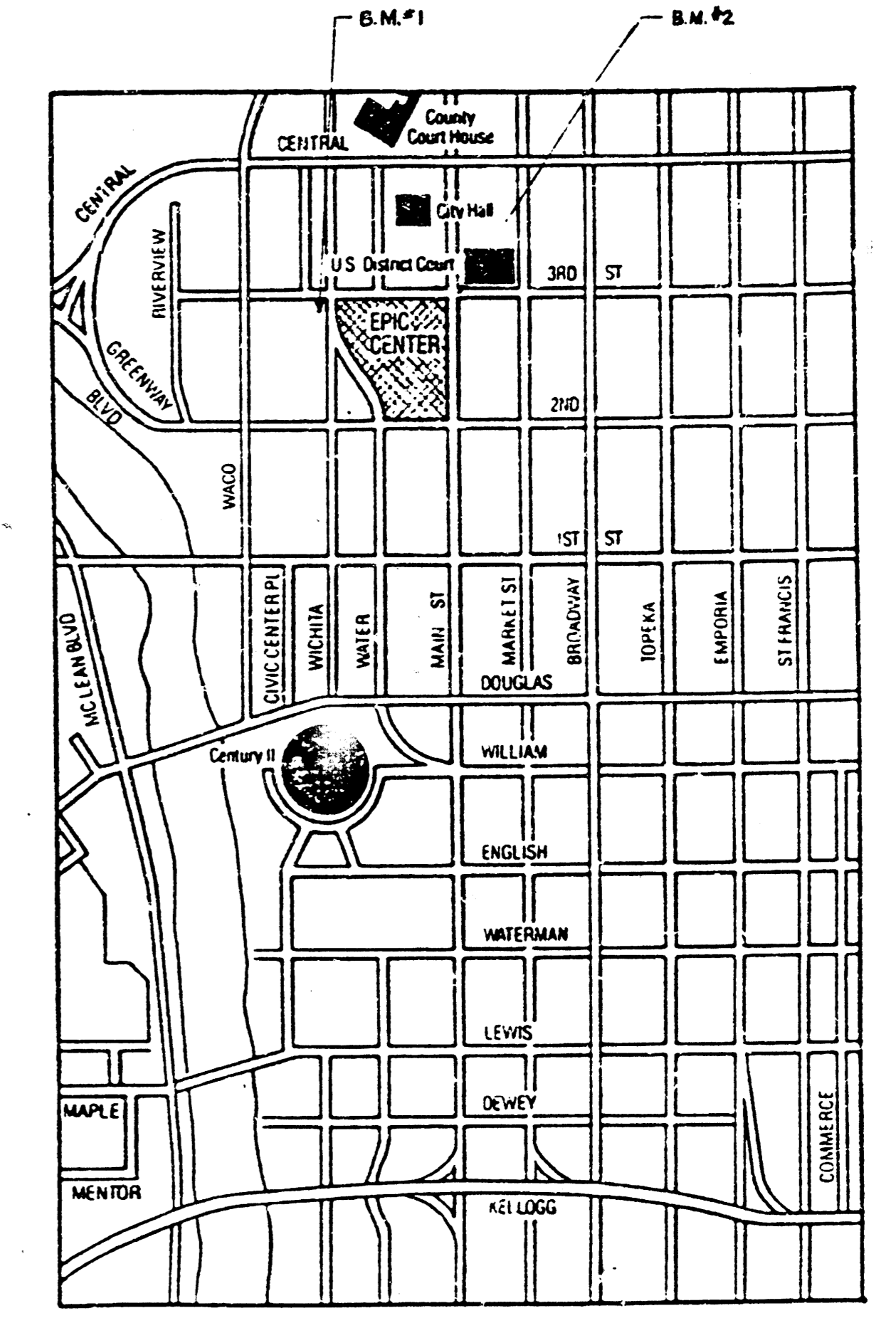
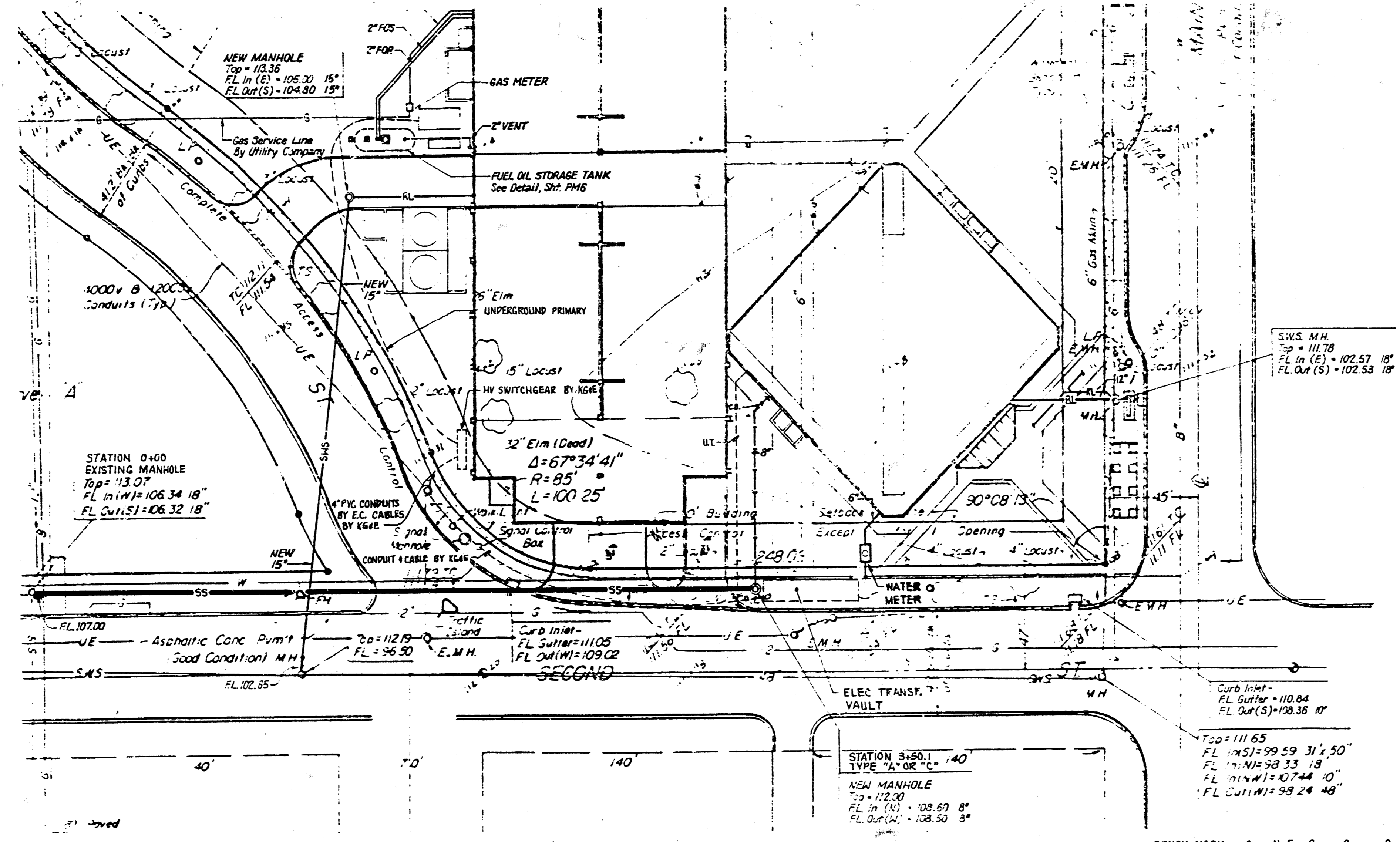


PROJECT DESCRIPTION		
PRIVATE SAN. AND STORM SEWER EXT. TO SERVE THE EPIC CENTER AT 2ND AND WATER.		
PROJECT NUMBER		
468-76-245-80001-000-000-043		
BOOK NO.	APPROVED BY	DATE
DRAWN BY	JR/DV	OCT. 1985
EPIC CENTER INC.		REVISED FEB. 1987
Booker/Freund		SCALE
Engineers Architects Planners		as noted

FILMED FROM THE BEST AVAILABLE COPY



PLAN



- BENCH MARK: 1. N.E. Cor. Conc. Base, Railroad Control Box, S.W. Cor., Wichita St. & 3rd St. Elev. 114.07 City Datum.  
 2. "a" on Back of Walk on N. Line 3rd St. 5' E. of E. Line Main St. Elev. 112.71 City Datum.

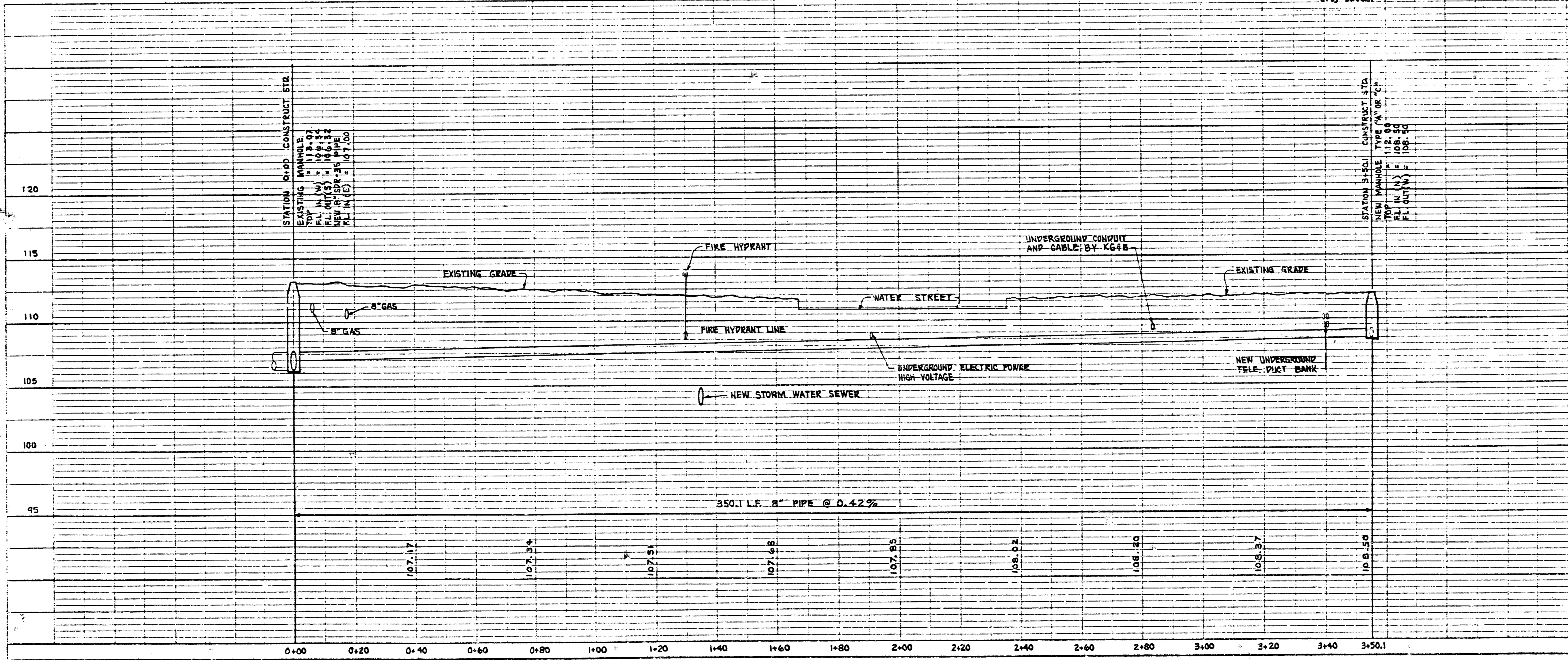
APPROVED OR NOTED  
 By CITY ENGINEER WICHITA

Sanitary Sewer: *APP 10/24/85*  
 Storm Sewer: *APP 10/24/85*

Driveway  
 Water  
 Gas

**NOTE TO CONTRACTOR**  
 This project will be constructed under the supervision of the CITY ENGINEER and conforming to the SPECIFICATIONS of the CITY OF WICHITA. THE CONTRACTOR WILL PAY THE City of Wichita for all costs of plan review, inspection and booking per contract.

NOTE: VERIFY DEPTH OF ALL UTILITIES BEFORE EXCAVATION



PROFILE

PROJECT DESCRIPTION	
PRIVATE SANITARY AND STORM SEWER EXT. TO SERVE THE EPIC CENTER AT 2ND AND WATER.	
PROJECT NUMBER 168-76-245-80001-006-000-043	
BOOK NO.	DATE: OCT. 1985
DRAWN BY: J.V.	REVISED:
<b>EPIC CENTER INC.</b>	
HYSON ENGINEERING, INC.	
305 Laura Wichita, Kansas 67211	
SCALE: AS NOTED	

SHEET 1 OF 2

