

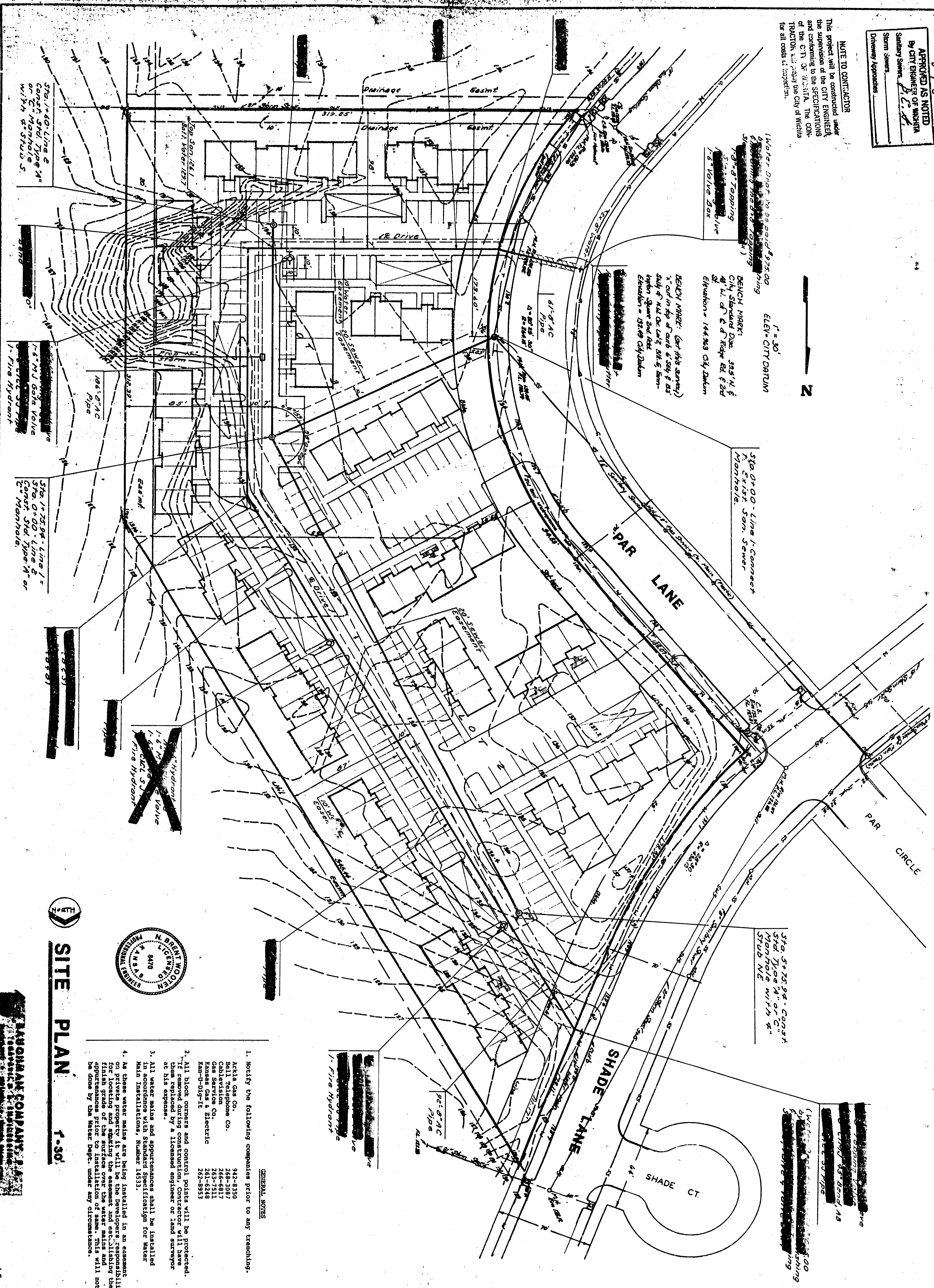
**APPROVED AS NOTED**  
By CITY ENGINEER OF WICHITA  
Sanitary Sewer  
Storm Sewer  
Ditchway Approaches

**NOTE TO CONTRACTOR**  
This project will be constructed under the supervision of the CITY ENGINEER and conforming to the SPECIFICATIONS of the C.T.D. OF WICHITA. THE CONTRACTOR WILL NOTIFY THE CITY OF WICHITA FOR ALL COSTS OF INSPECTION.

Water Dept. to be notified 48 hrs. prior to construction.  
Bench Marks: (See this survey)  
City Standard Ditch: 393' 1/4" ±  
@ Lt. of E. of Ridge Rd. E. 2nd  
Elevation = 1443.93 City Datum

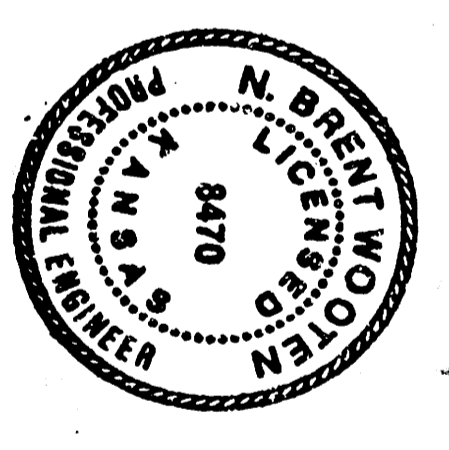
1" = 30'

2



Sta. 5+25.98 - Connect  
1.5\"/>

1.5\"/>



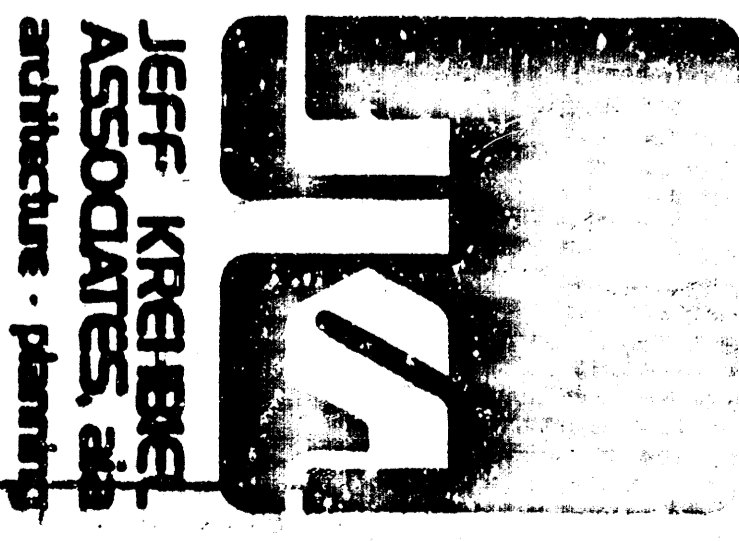
**SITE PLAN**

1-30

**GENERAL NOTES**

1. Notify the following companies prior to any trenching.  
 Alpha Gas Co. 948-4330  
 Bell Telephone Co. 268-3087  
 Cablevision 268-8817  
 Gas Service Co. 263-7511  
 Kansas Gas & Electric 261-5238  
 K&M-015-71 262-9535
2. All block corners and control points will be protected. If removed during construction, Contractor will have them replaced by a licensed engineer or land surveyor at his expense.
3. All water mains and appurtenances shall be installed in accordance with Standard Specification for Water Main Installations, Number 14533.
4. As these water mains are being installed in an assessment on private property it will be the developer's responsibility for locating and staking the assessment and establishing the appurtenances prior to installation of same. This will not be done by the water department under any circumstances.

PRIVATE SANITARY SEWER  
EXTENSION TO SERVE LOTS 2 & 3, BLK. 5,  
FARMINGTON SQUARE 2ND ADDITION



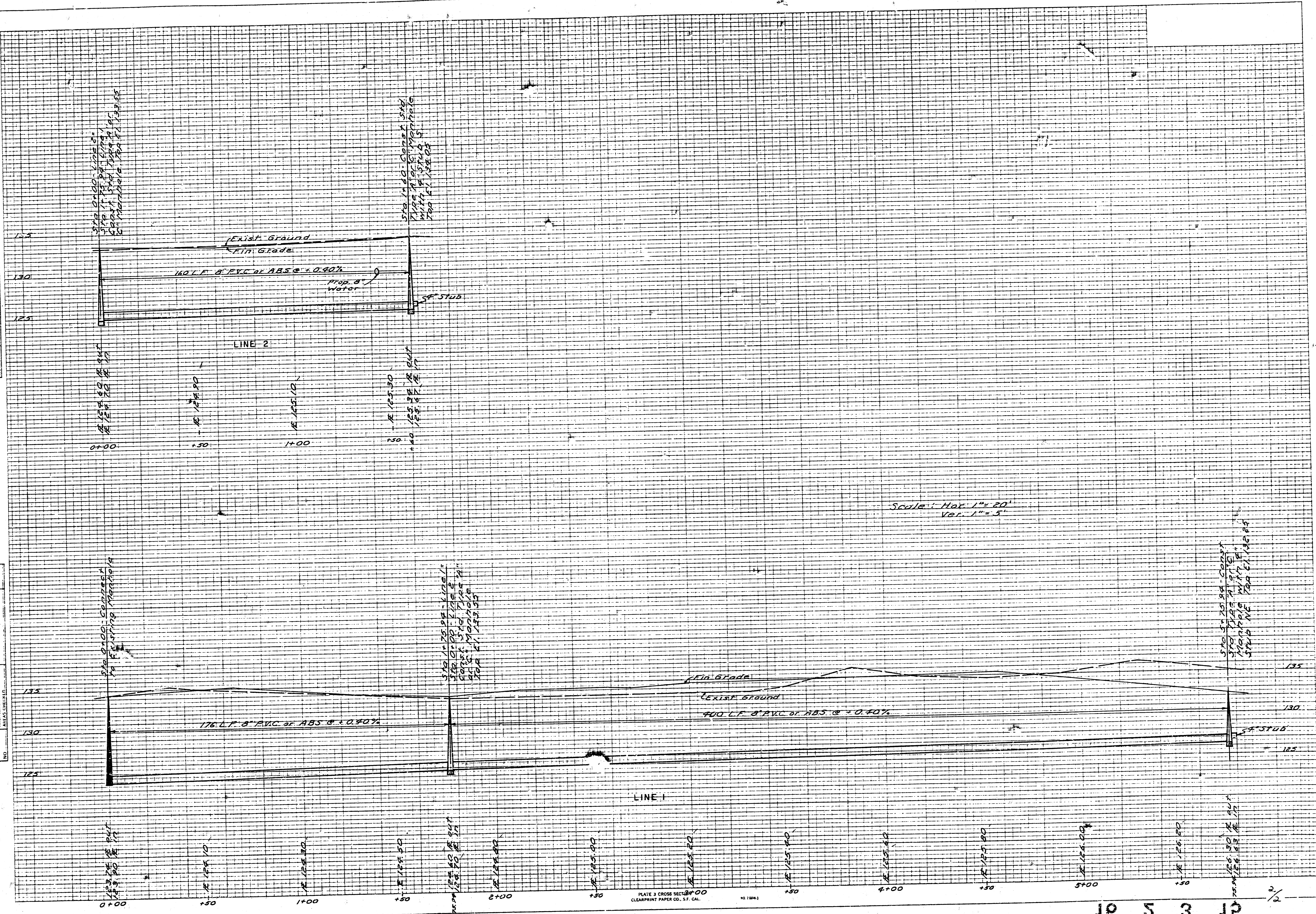
DATE: 1/2

Sheet No.

DATE DRAWN

DATE	
BY	
REVISION	
APPROVED	
PROJECT	
NOTE BOOK	
AREA	
NO.	

DATE	
BY	
REVISION	
APPROVED	
PROJECT	
NOTE BOOK	
AREA	
NO.	



21  
3  
5  
at