

- LEGEND**
- Fire Hydrant
  - Waterline
  - Water Service
  - Sanitary Sewer & Manhole
  - Sanitary Sewer Service

**4" SANITARY SEWER STUBS**

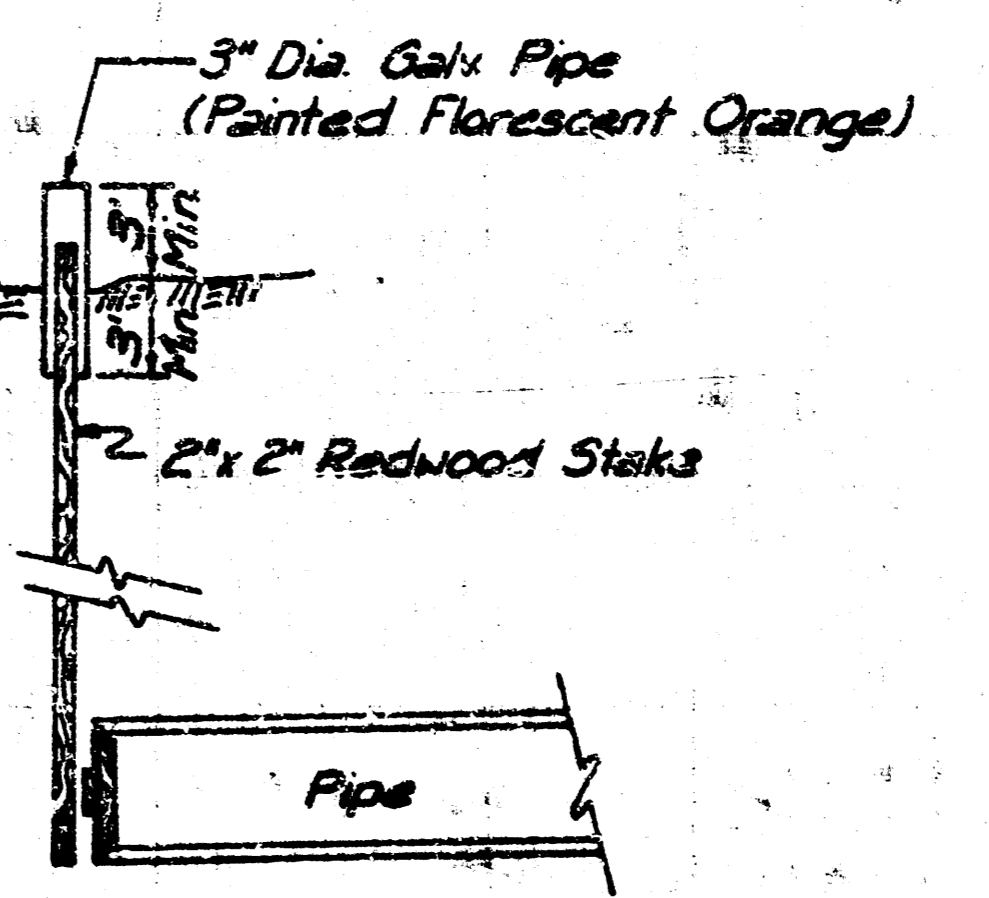
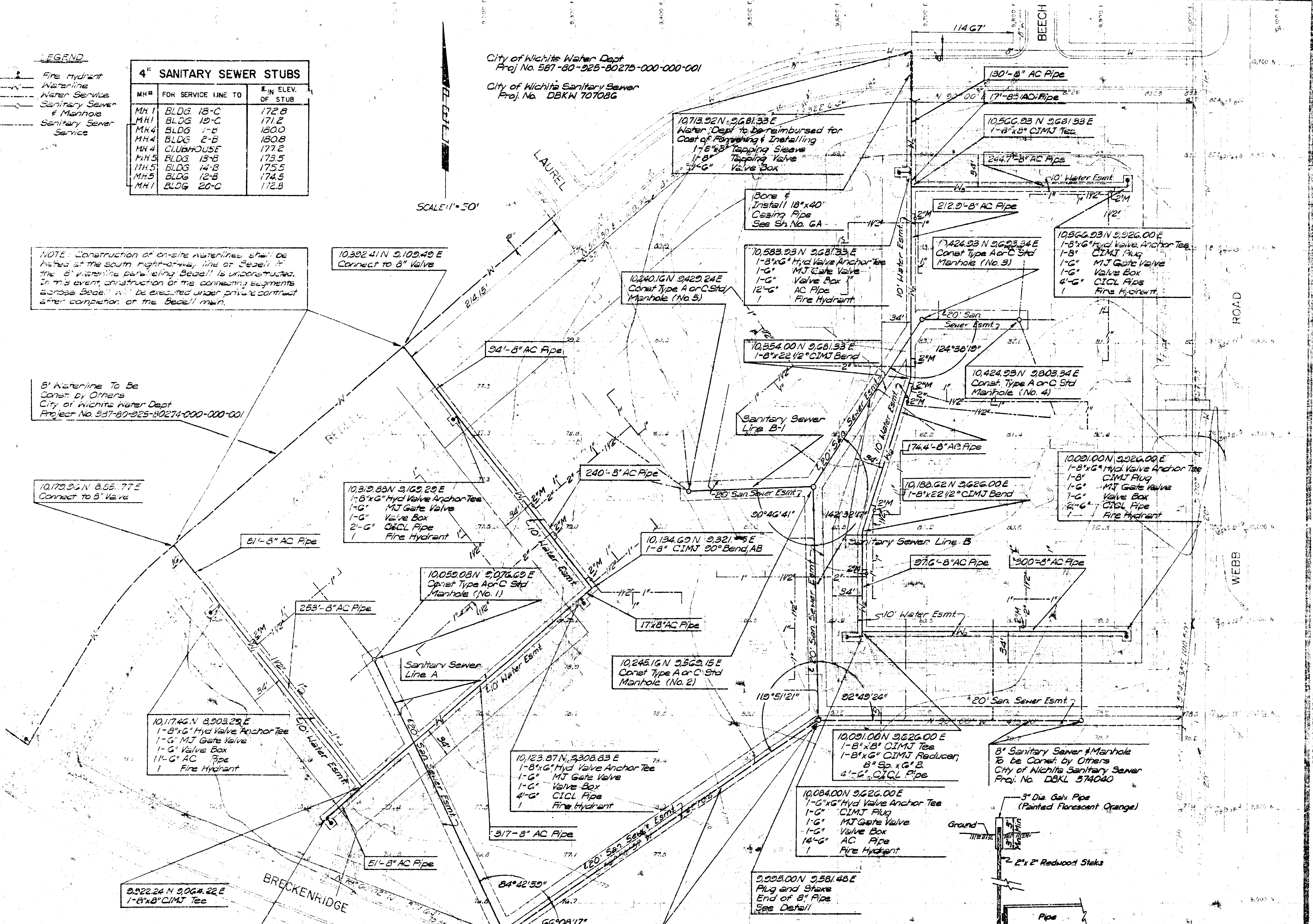
MH#	FOR SERVICE LINE TO	F IN ELEV. OF STUB
MH1	BLDG 18-C	172.8
MH1	BLDG 19-C	171.2
MH4	BLDG 1-B	180.0
MH4	BLDG 2-B	180.8
MH4	CLUBHOUSE	177.2
MH5	BLDG 13-B	173.5
MH5	BLDG 14-B	175.5
MH5	BLDG 12-B	174.5
MH1	BLDG 20-C	172.8

City of Wichita Water Dept  
 Proj No. 587-80-925-80275-000-000-001  
 City of Wichita Sanitary Sewer  
 Proj. No. DBKN 707086

SCALE: 1" = 50'

NOTE: Construction of on-site waterlines shall be halted at the south right-of-way line of Beedell if the 8" waterline paralleling Beedell is unconstructed. In this event, construction of the connecting segments across Beedell will be executed under private contract after completion of the Beedell main.

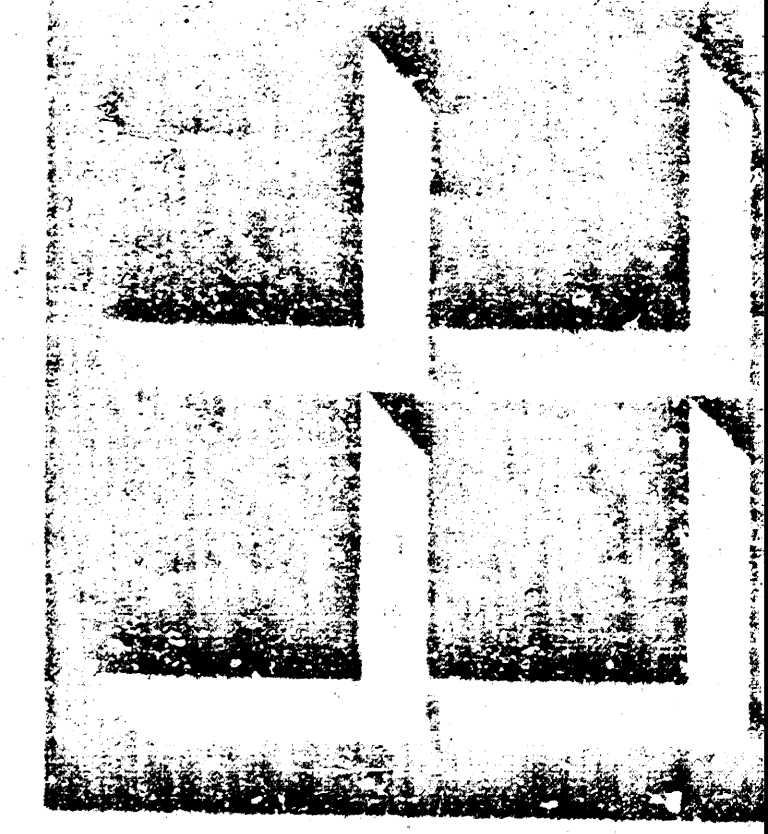
8" Waterline To Be Const. by Others  
 City of Wichita Water Dept  
 Project No. 537-80-925-80274-000-000-001



See Sh. No 3 for Site Layout  
 See Sh. No 4 for Site Grading & Drainage.  
 See Sh. No. GA for Utilities Profiles.  
 See Sh. No. 4 for General Notes.

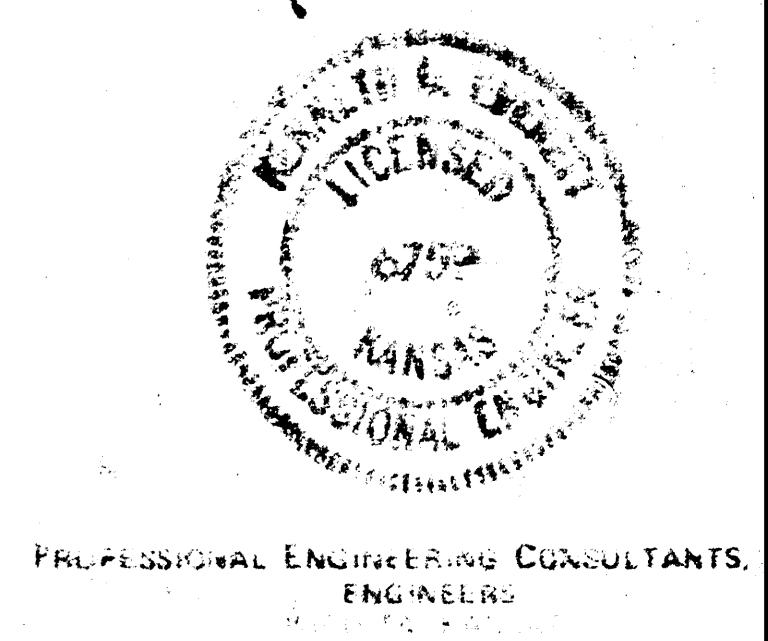
3,800.80N 9,024.87E  
 1-8"x6" Hyd Valve Anchor Tee

8" Sanitary Sewer & Manholes  
 To be Const. by Others  
 City of Wichita Sanitary Sewer



GOSSEN LIVINGSTON ASSOCIATES, P.A.

2417 W. WICHITA, KANSAS 67202  
 316-261-1900 FAX 316-261-1905



PROFESSIONAL ENGINEERING CONSULTANTS  
 ENGINEERS

NOTE TO CONTRACTOR  
 The project will be constructed under the supervision of the City Engineer and conforming to the plans prepared by the City of Wichita.

APPROVED  
 1-9-78

APPROVED AS NOTED  
 1-29-77  
 By City Engineer

FOX RUN WICHITA, KANSAS

UTILITY PLAN

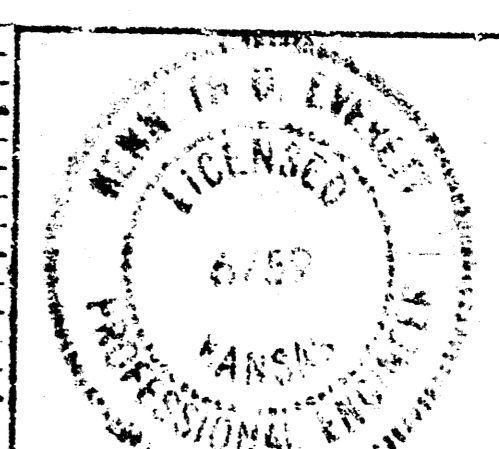
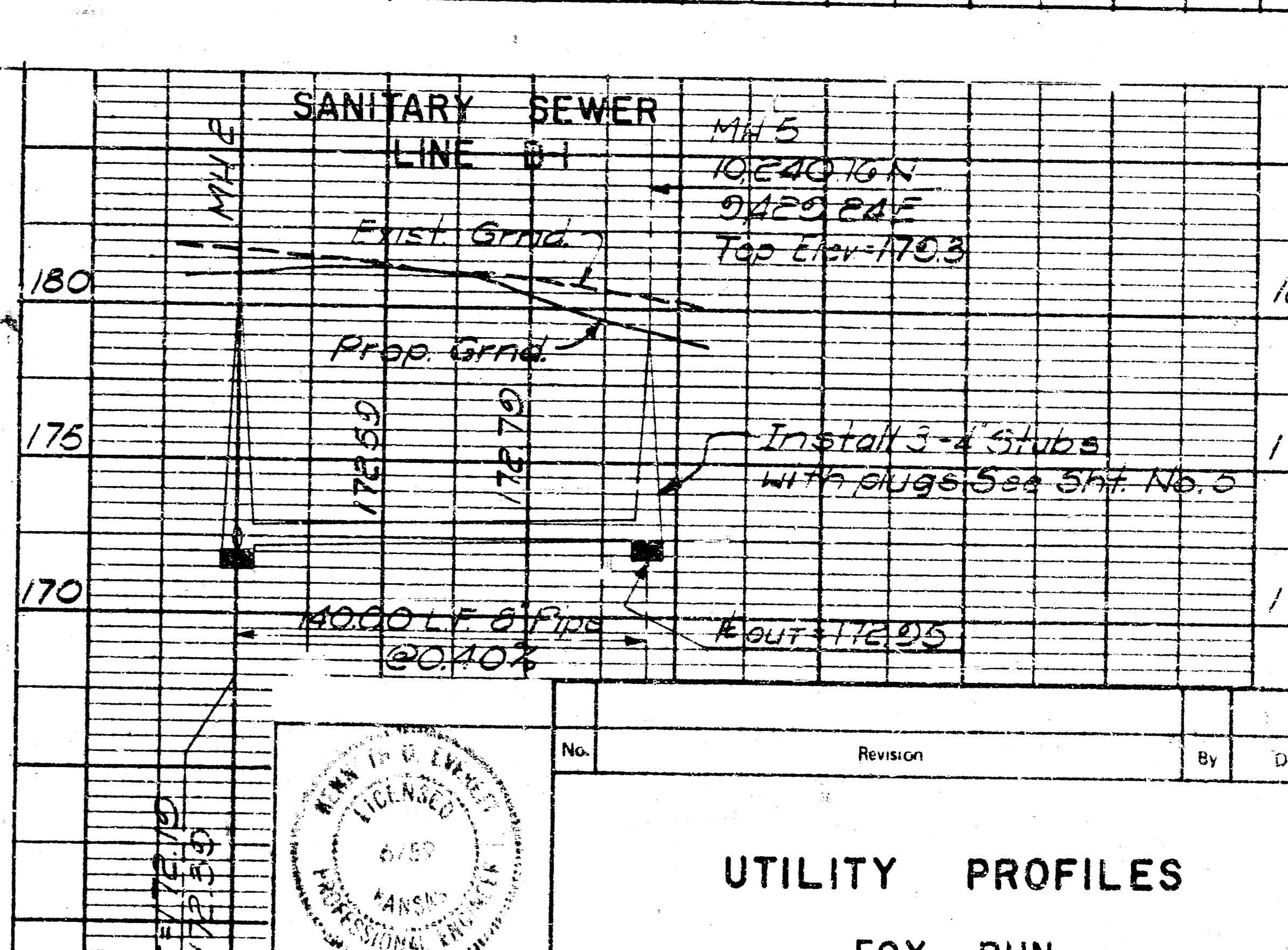
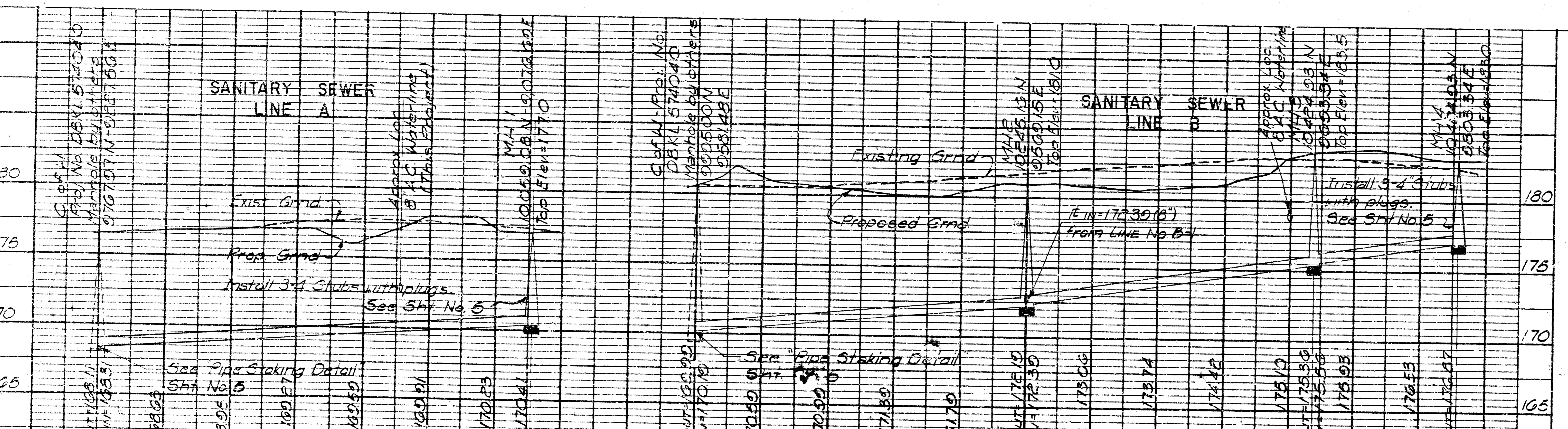
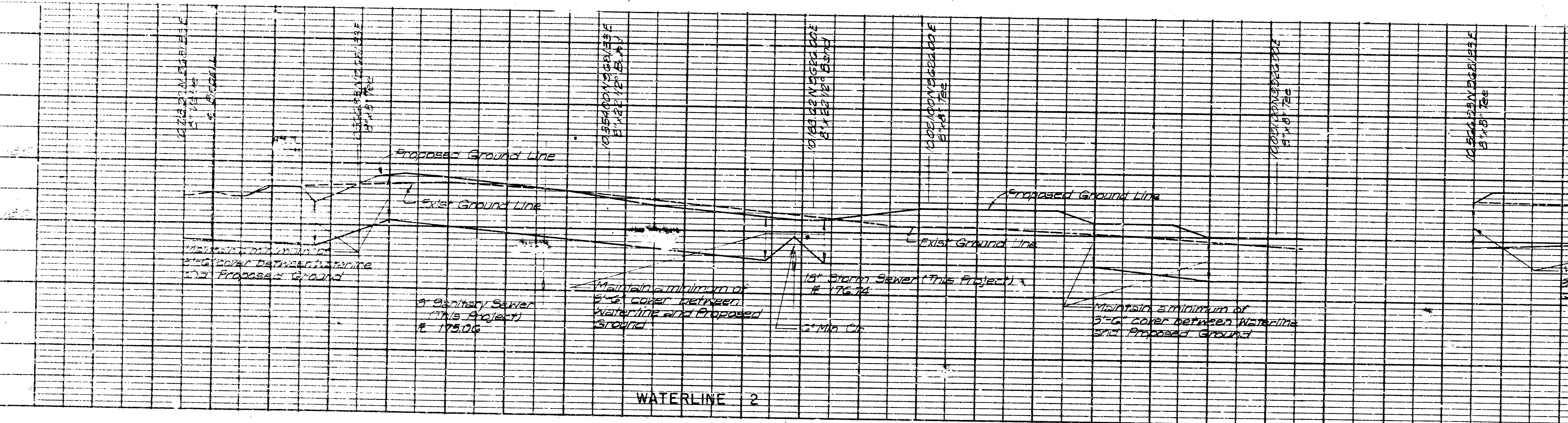
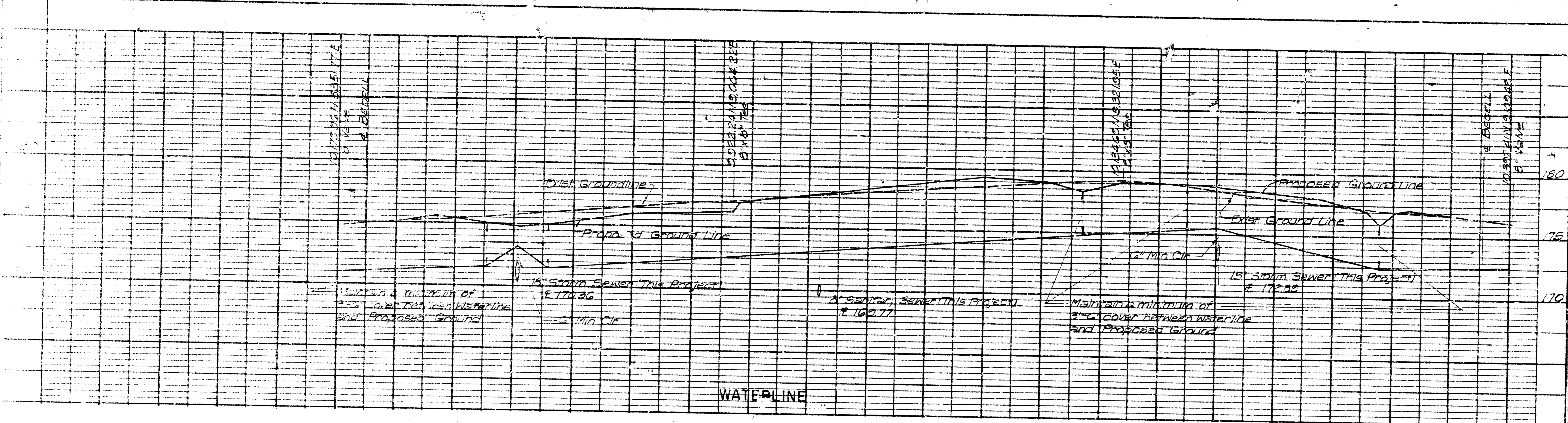
INSTALLATION OF 18-INCH CASING PIPE

The installation of casing pipe by boring shall use methods and equipment that encases the hole as the earth is removed. Boring without the concurrent installation of a casing pipe will not be permitted.

All casing pipe shall be new steel pipe meeting A.S.T.M. Specifications A 139 Grade B and shall have a minimum wall thickness of 0.250 inch. Good used steel pipe meeting the above requirements may be used when approved by the Chief Water Pipeline Construction Inspector.

Treated wooden blocks or skids shall be fastened to each joint of pipe in such a manner as to properly support the conduit pipe concentric within the casing pipe. After the conduit pipe has been installed, the casing pipe shall be completely filled with sand and the ends permanently closed.

See Site Grading and Utility Plans, Sh. Nos. 4, 5 for additional information.



No.	Revision	By	Date

UTILITY PROFILES  
FOX RUN