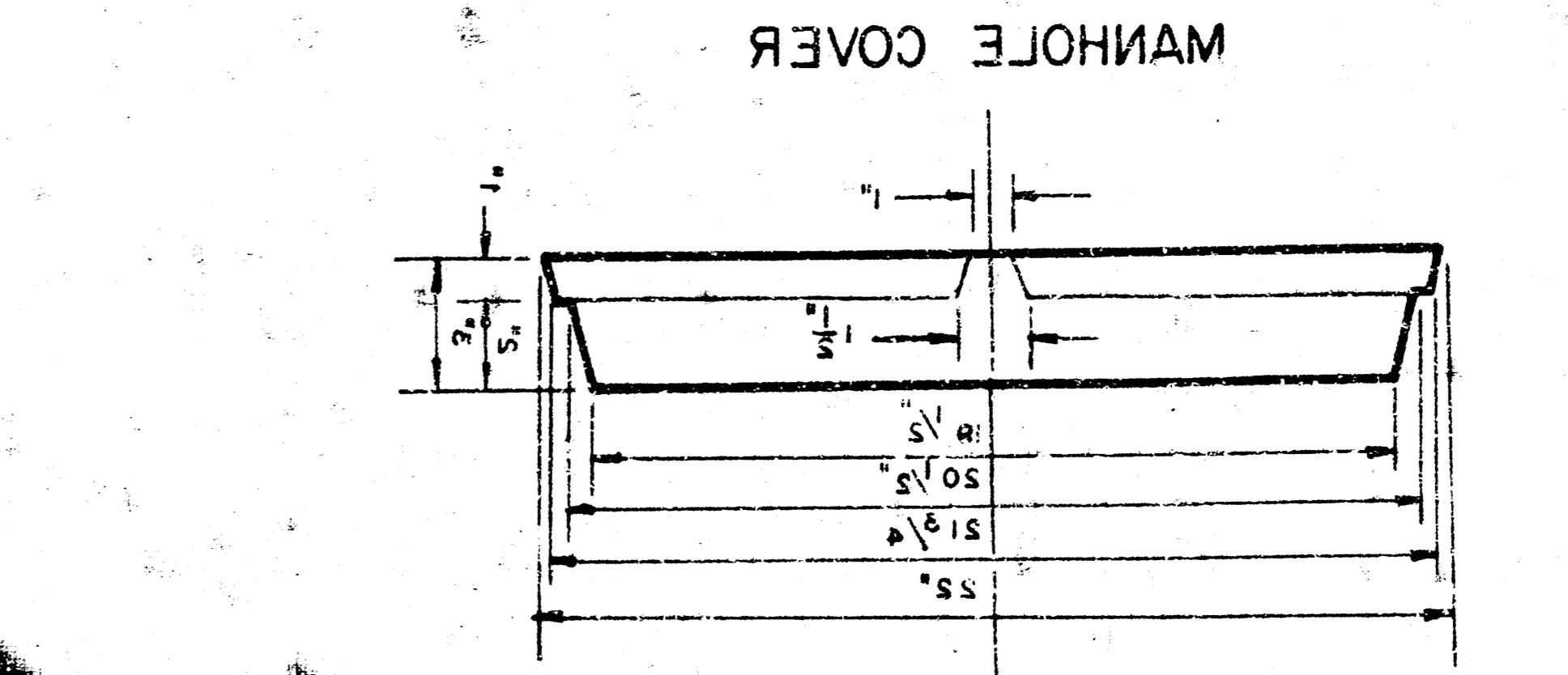
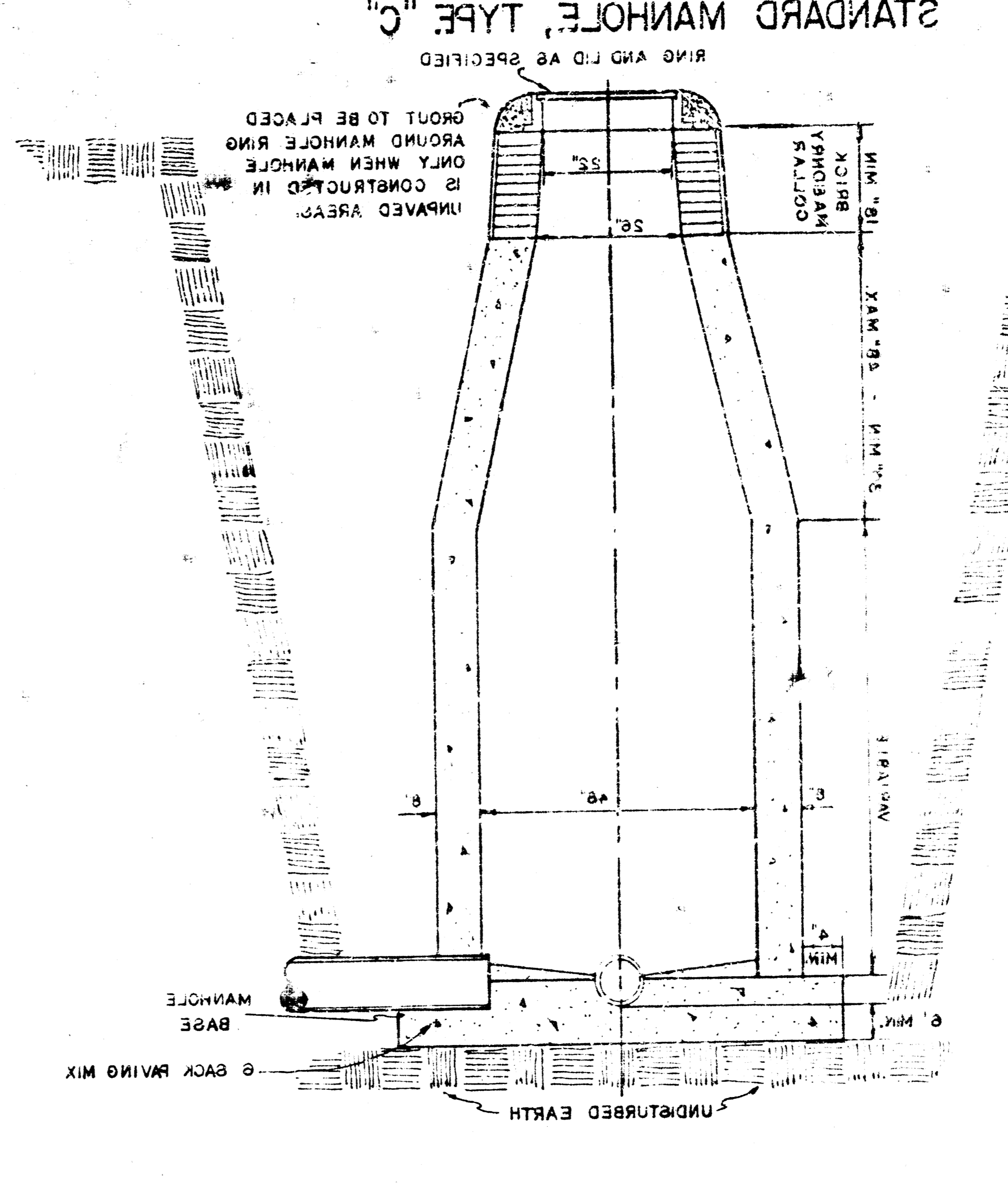
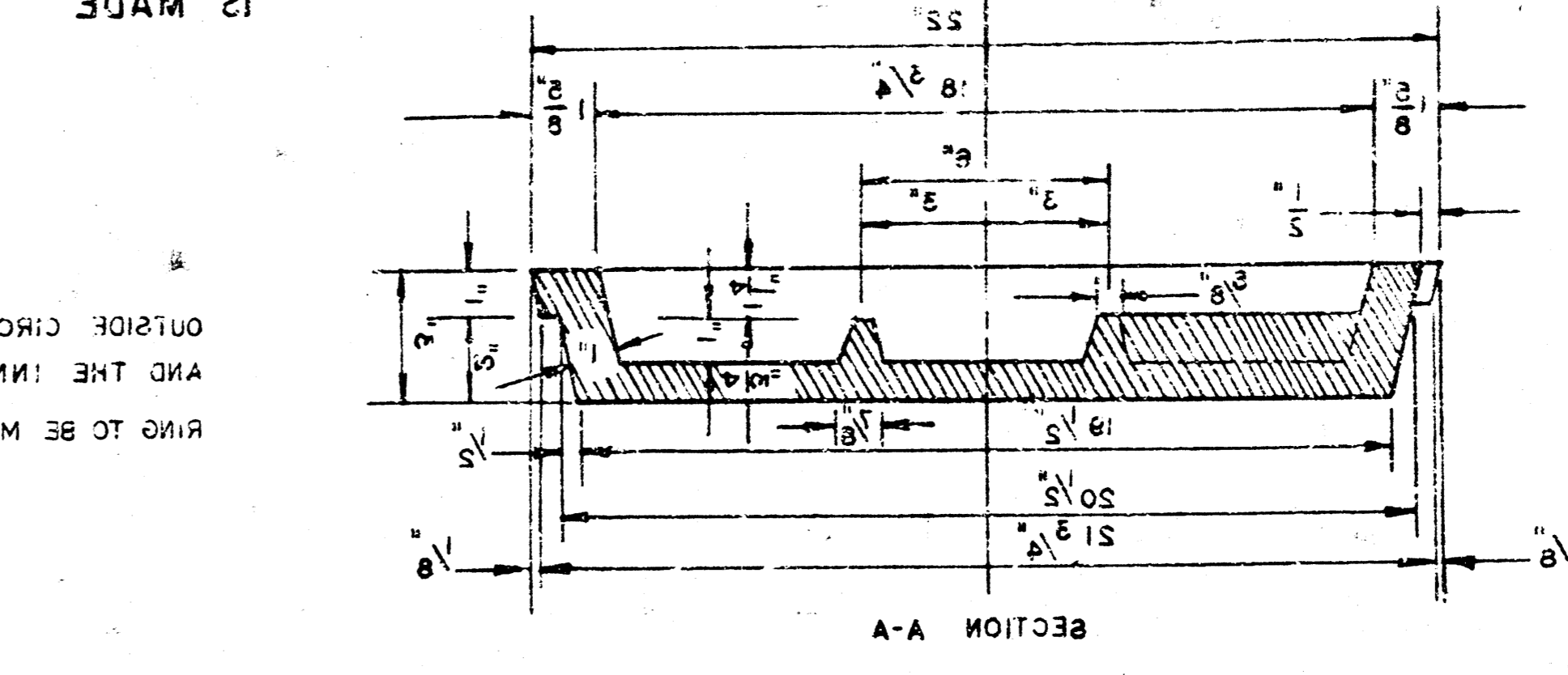
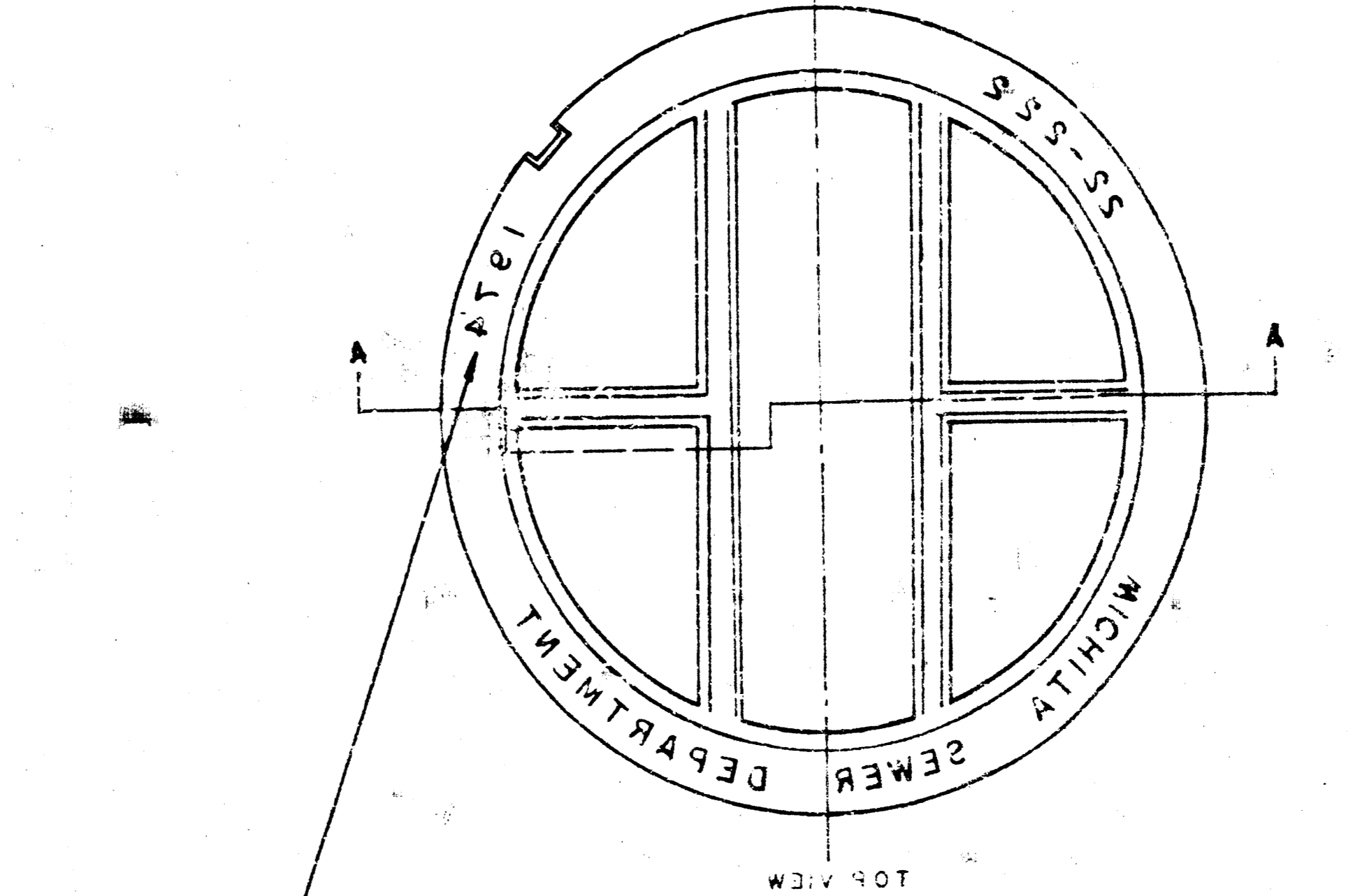
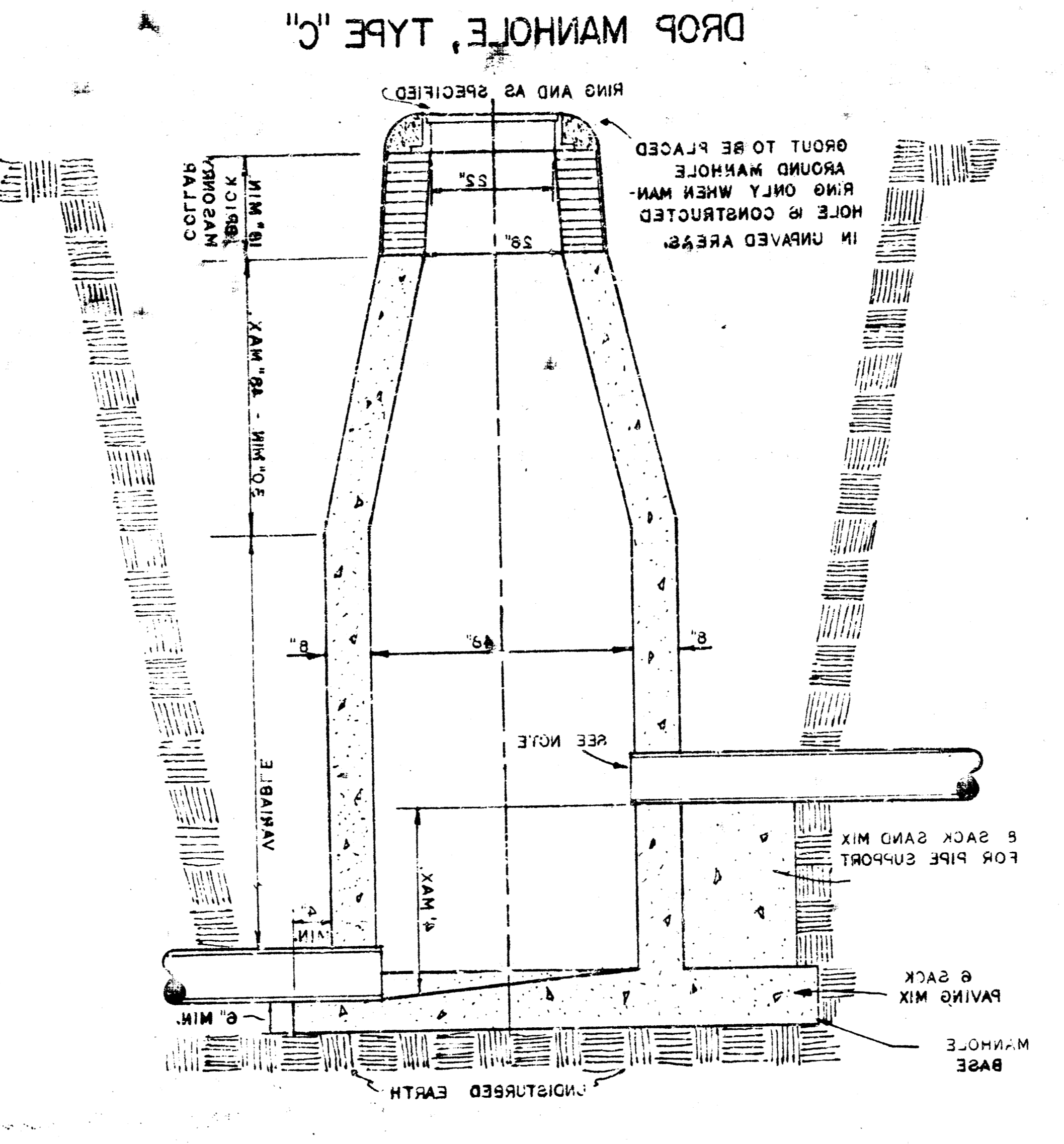
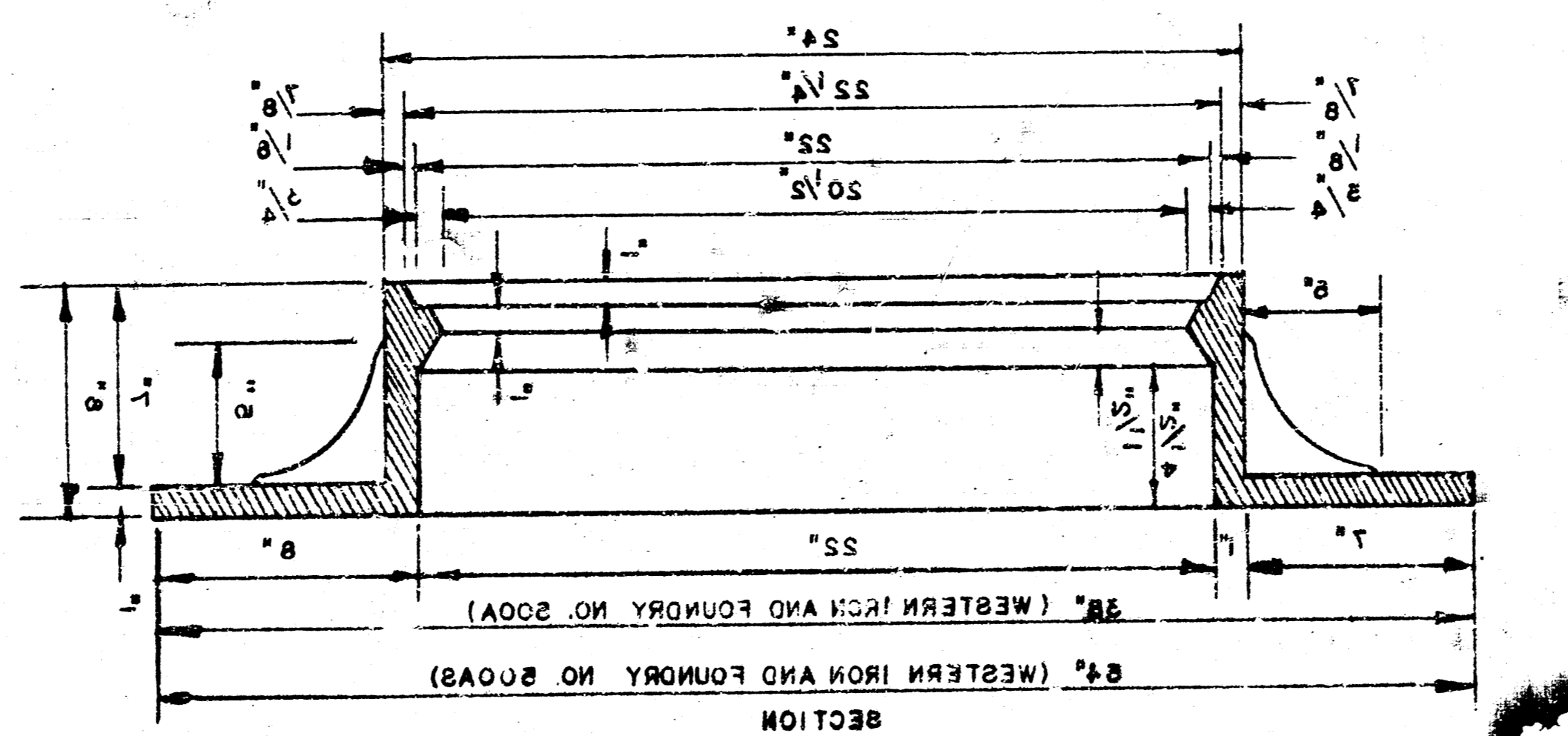
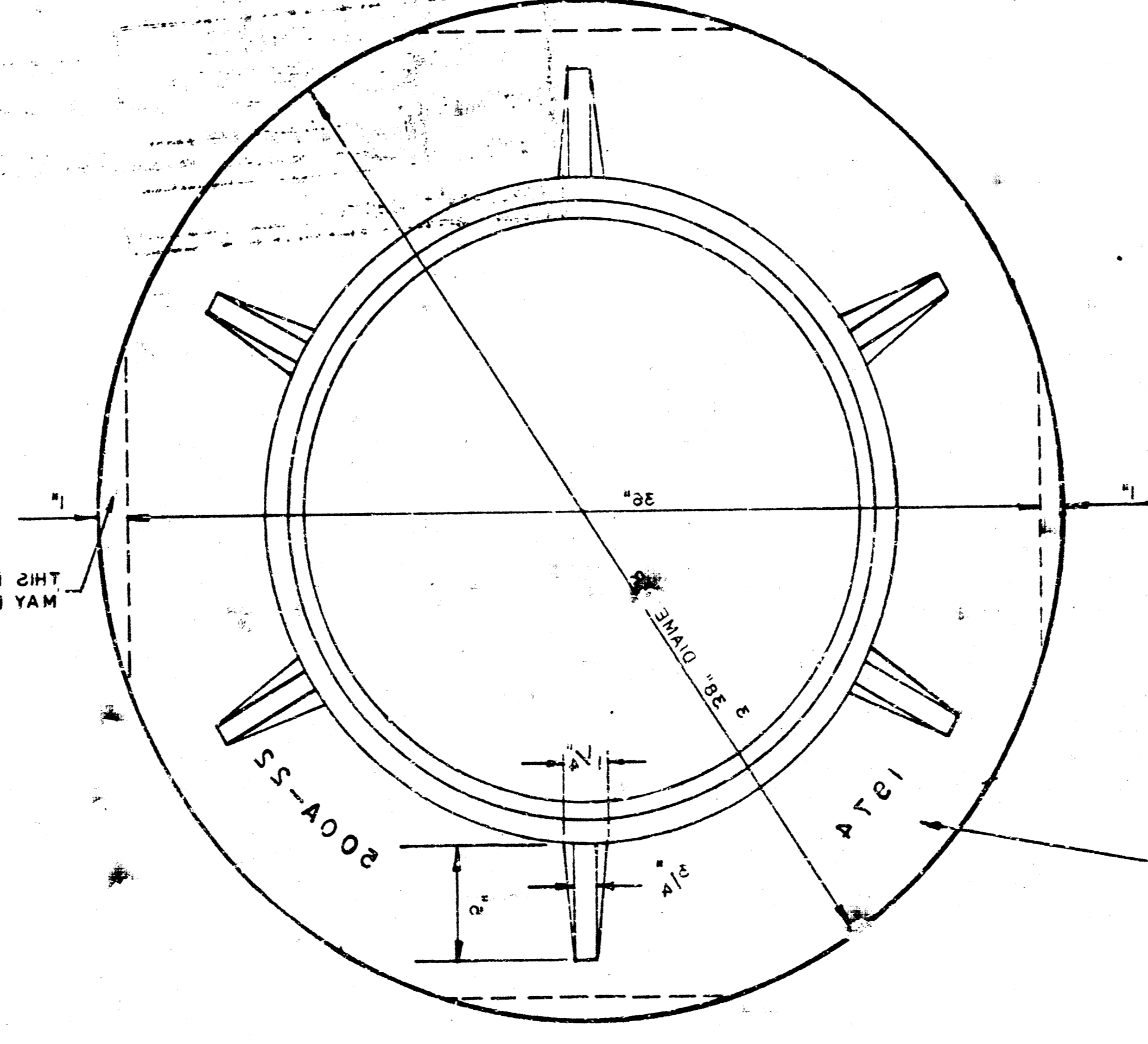
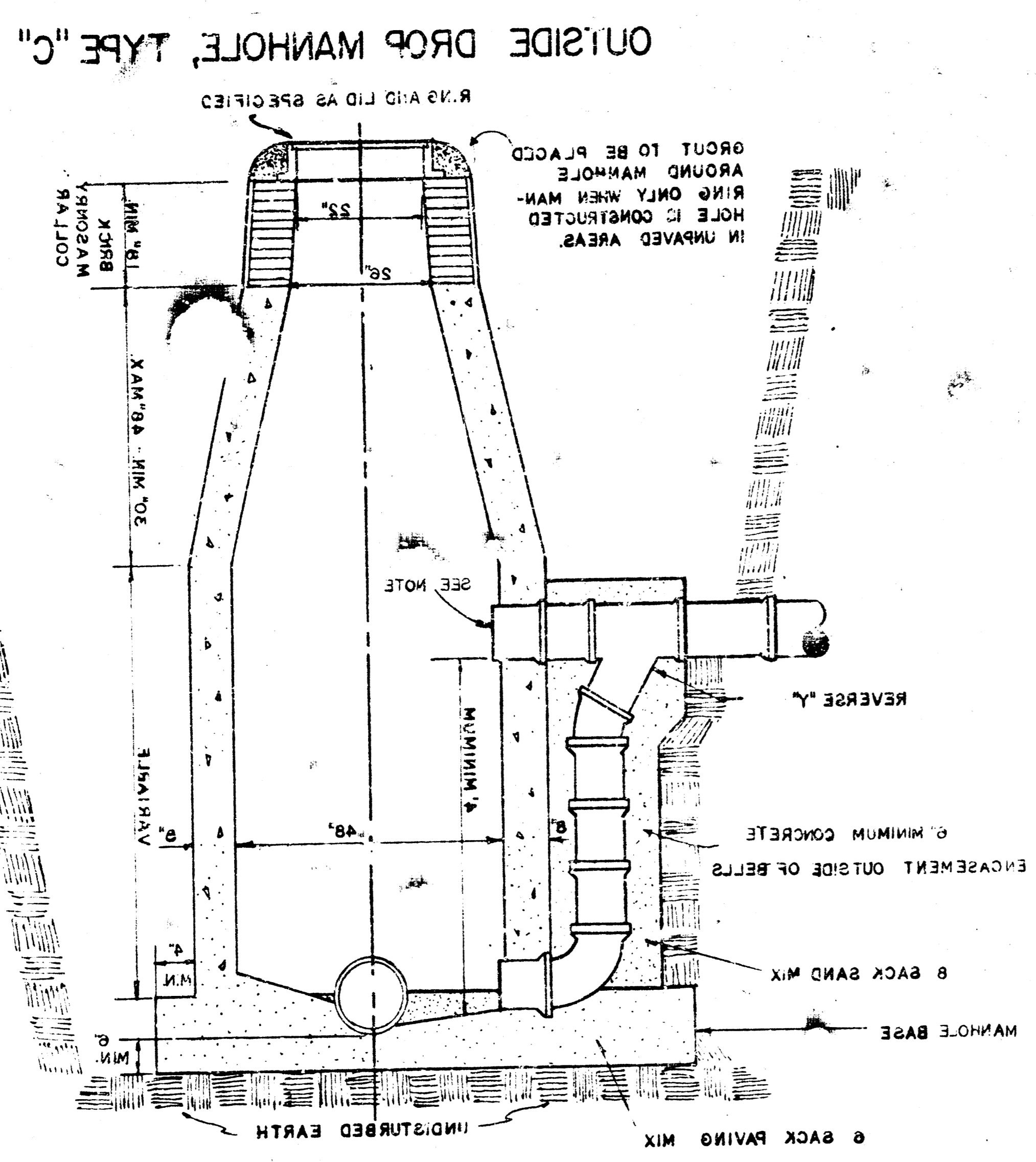
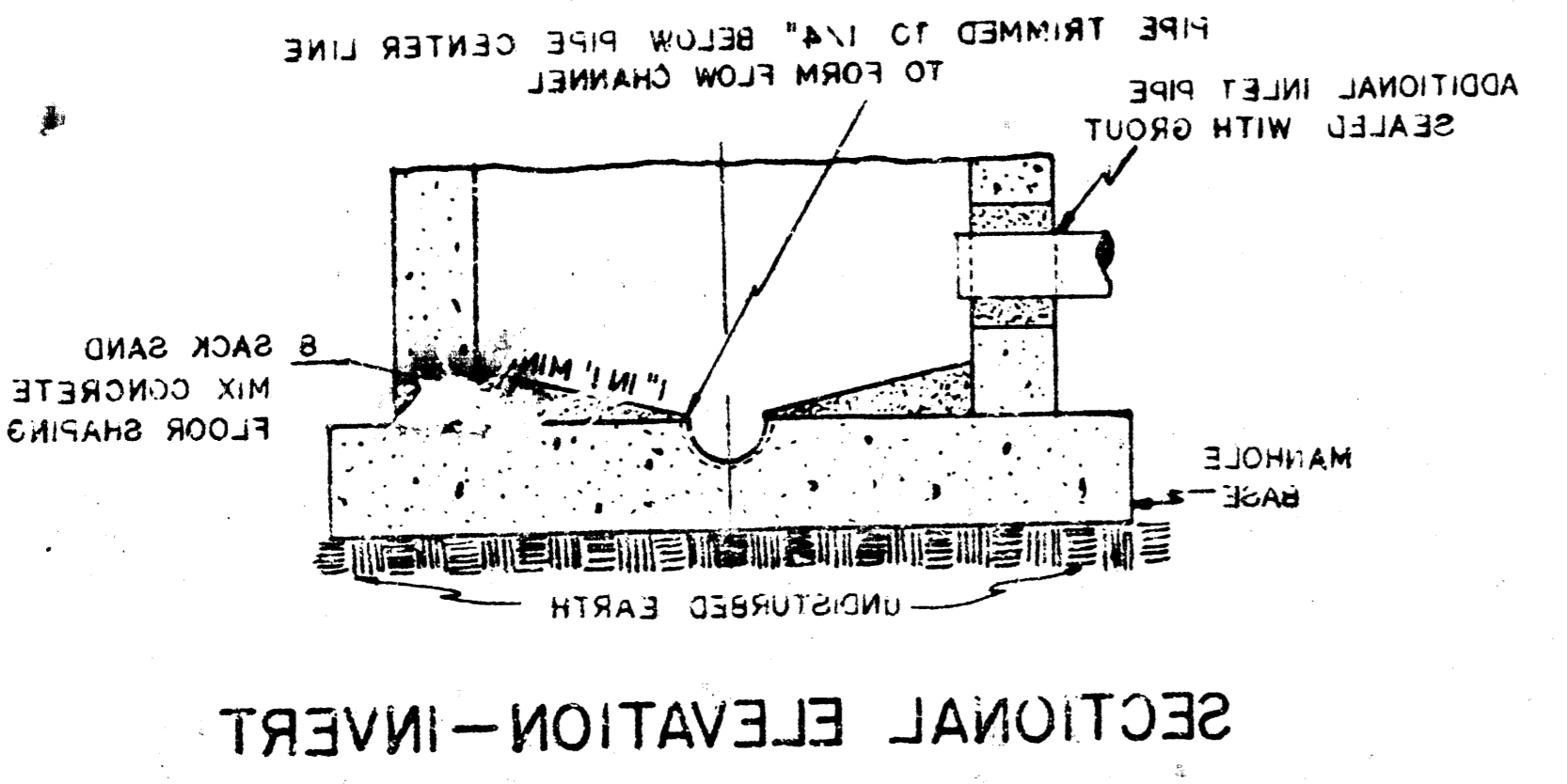


GENERAL NOTES
 MORTAR USED IN MASONRY CONSTRUCTION SHALL CONTAIN 8 SACKS OF CEMENT PER CUBIC YARD.
 STANDARD MANHOLES TYPE "C" AND STANDARD DROP MANHOLES TYPE "C" SHALL BE BIDD AS STANDARD MANHOLES FOR THE TYPE AND DIAMETER INDICATED.
 OUTSIDE DROP MANHOLES TYPE "C" SHALL BE BIDD AS STANDARD OUTSIDE DROP MANHOLES FOR THE TYPE AND DIAMETER INDICATED. ALL MANHOLES WITH PIPE SIZES LARGER THAN 24" SHALL BE 8 FT. DIAMETER. THE FLOORS OF ALL MANHOLES SHALL BE SHAPED TO INCREASE HYDRAULIC EFFICIENCY USING 8 SACK SAND MIX CONCRETE.
 CAST IN PLACE CIRCULAR CONCRETE MANHOLES ARE TO BE CONSTRUCTED ONLY ON SEWERS NOT SUBJECT TO DETRIATION OF CONCRETE DUE TO FORMATION OF HYDROGEN SULFIDE GAS AND IN LOCATIONS WHERE IT IS OBLIVIOUS THAT ANY ADJUSTMENT OF THE MANHOLE TOP ELEVATION WHICH MAY BE NECESSARY WILL REQUIRE MODIFICATION OF THE CONCRETE BARREL.



NOTE: OPENING FOR INLET PIPE CUT IN MANHOLE WALL AND PIPE GROUTED IN PLACE WITH NON-SHRINKING GROUT. EXTERIOR OF COMPLETED CONNECTION TO BE SEALED WITH APPROVED COATING.

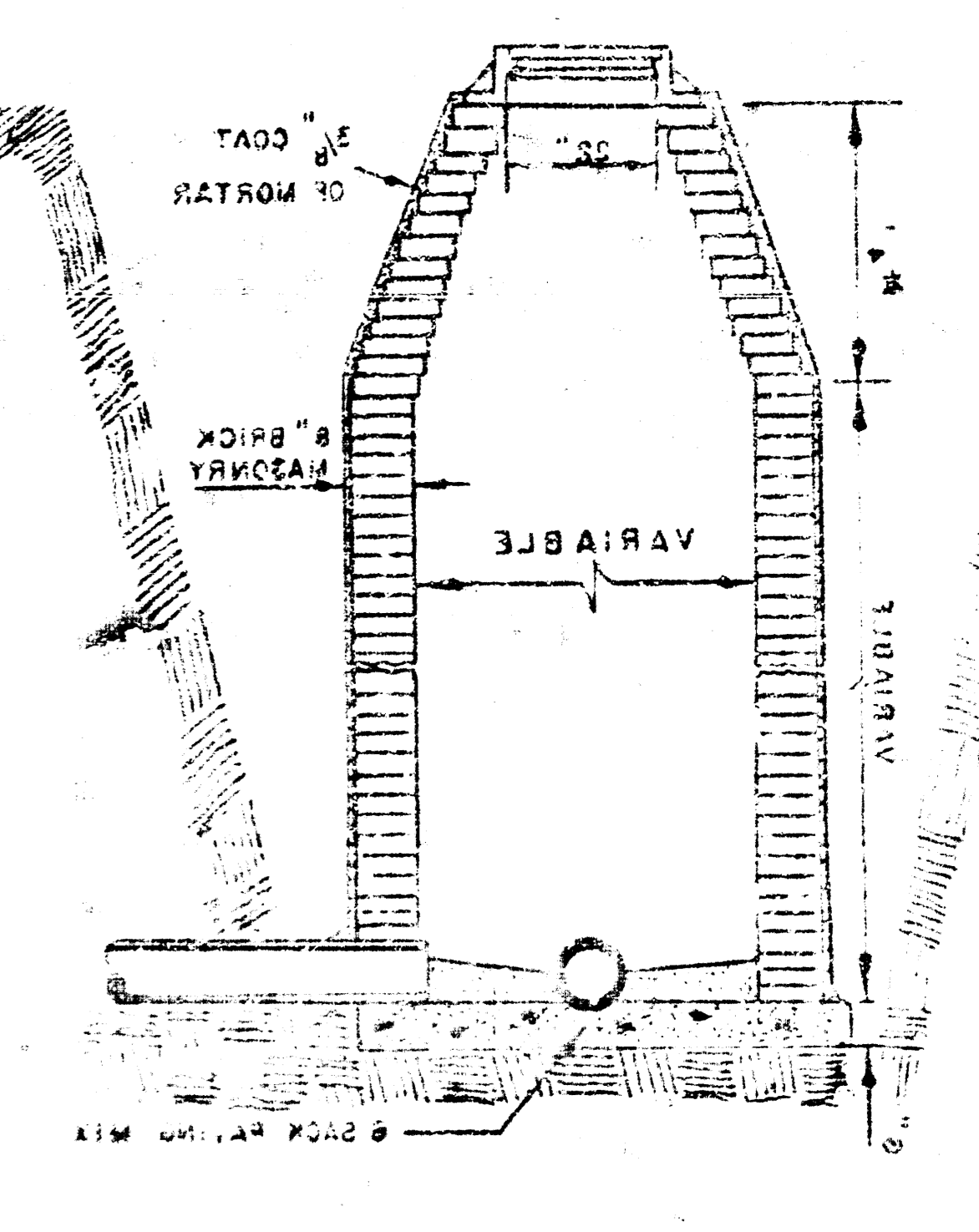
MANHOLE RING
 WEIGHT 800 LBS. RING NO. 800A
 WEIGHT 355 LBS. RING NO. 800B
 THIS PORTION OF FLANGE MAY BE OMITTED.

YEAR CASTING IS MADE

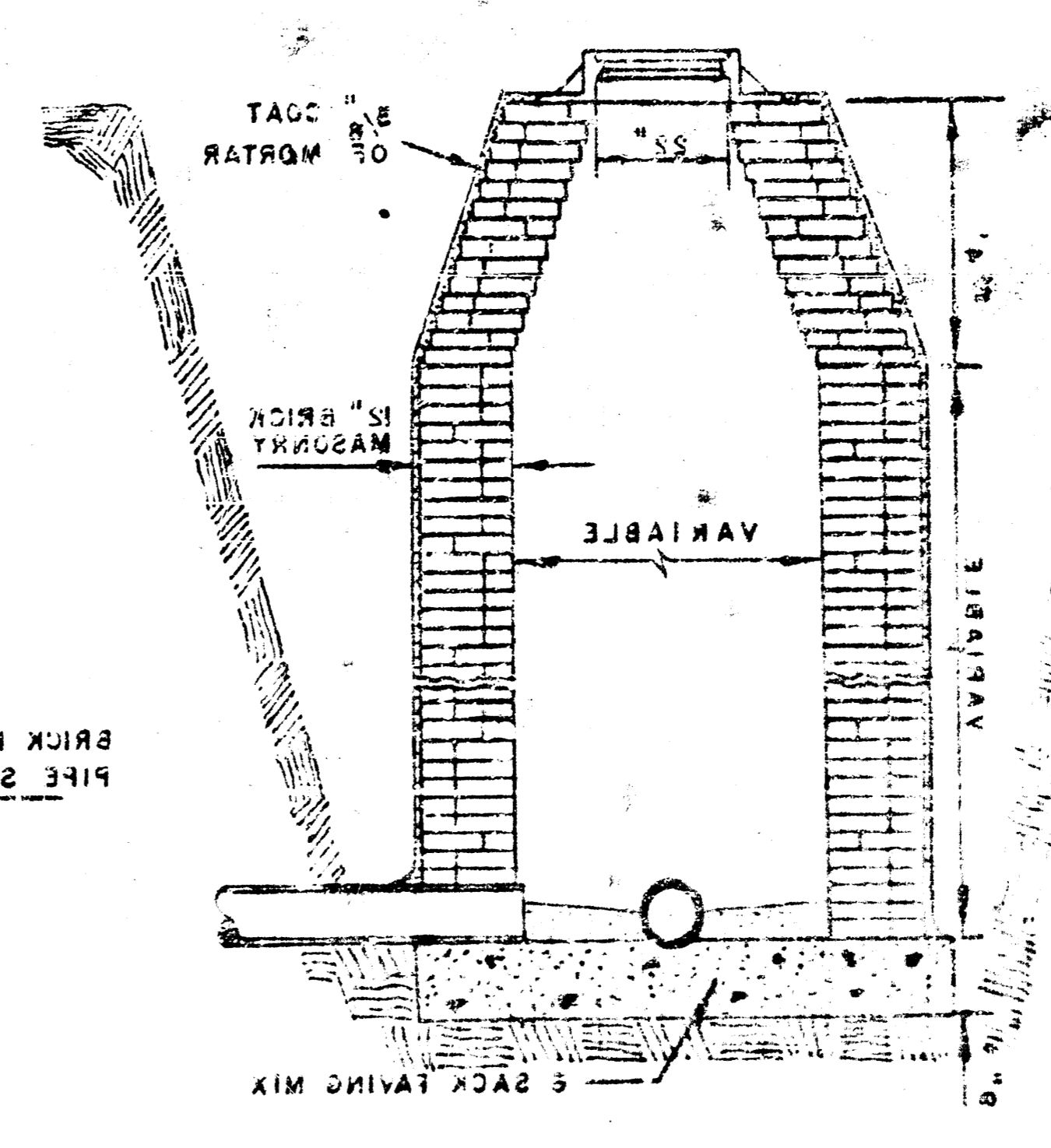
OUTSIDE CIRCUMFERENCE OF COVER AND THE INNER FACE AND BEAT OF RING TO BE MACHINE FIT.

MANHOLE COVER
 WEIGHT 110 LBS.

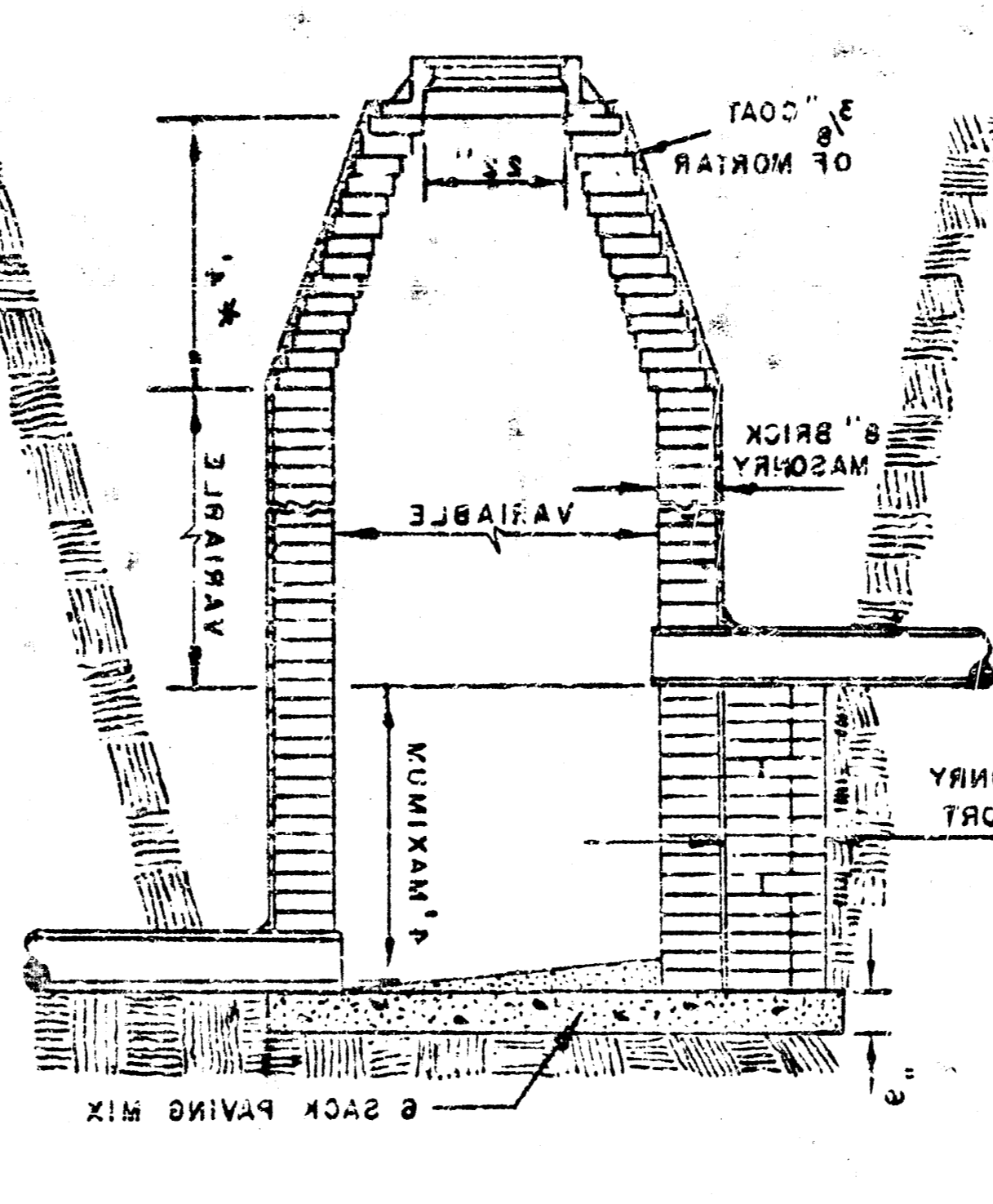
MANHOLE COVER



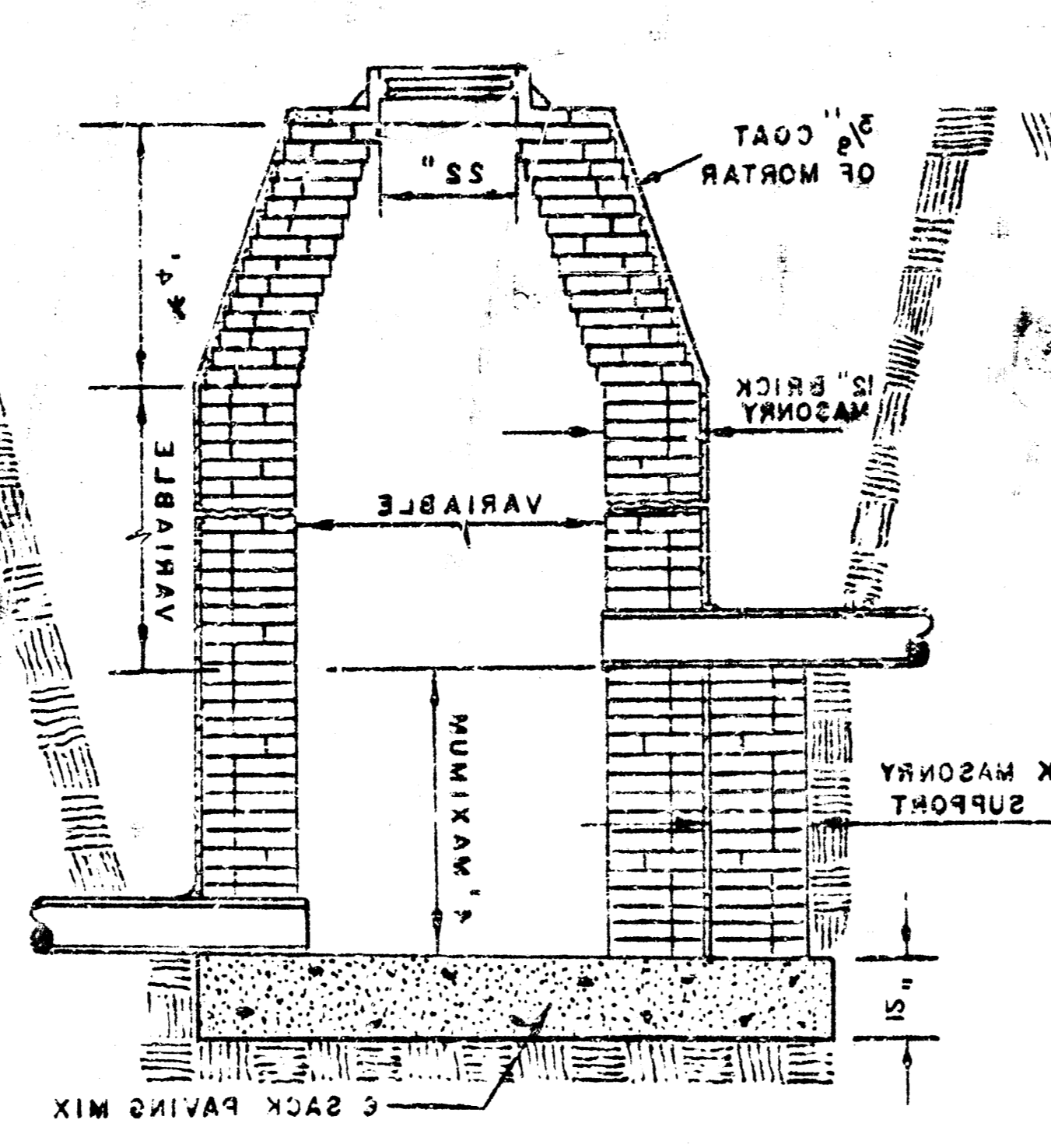
STANDARD MANHOLE
TYPE "A"



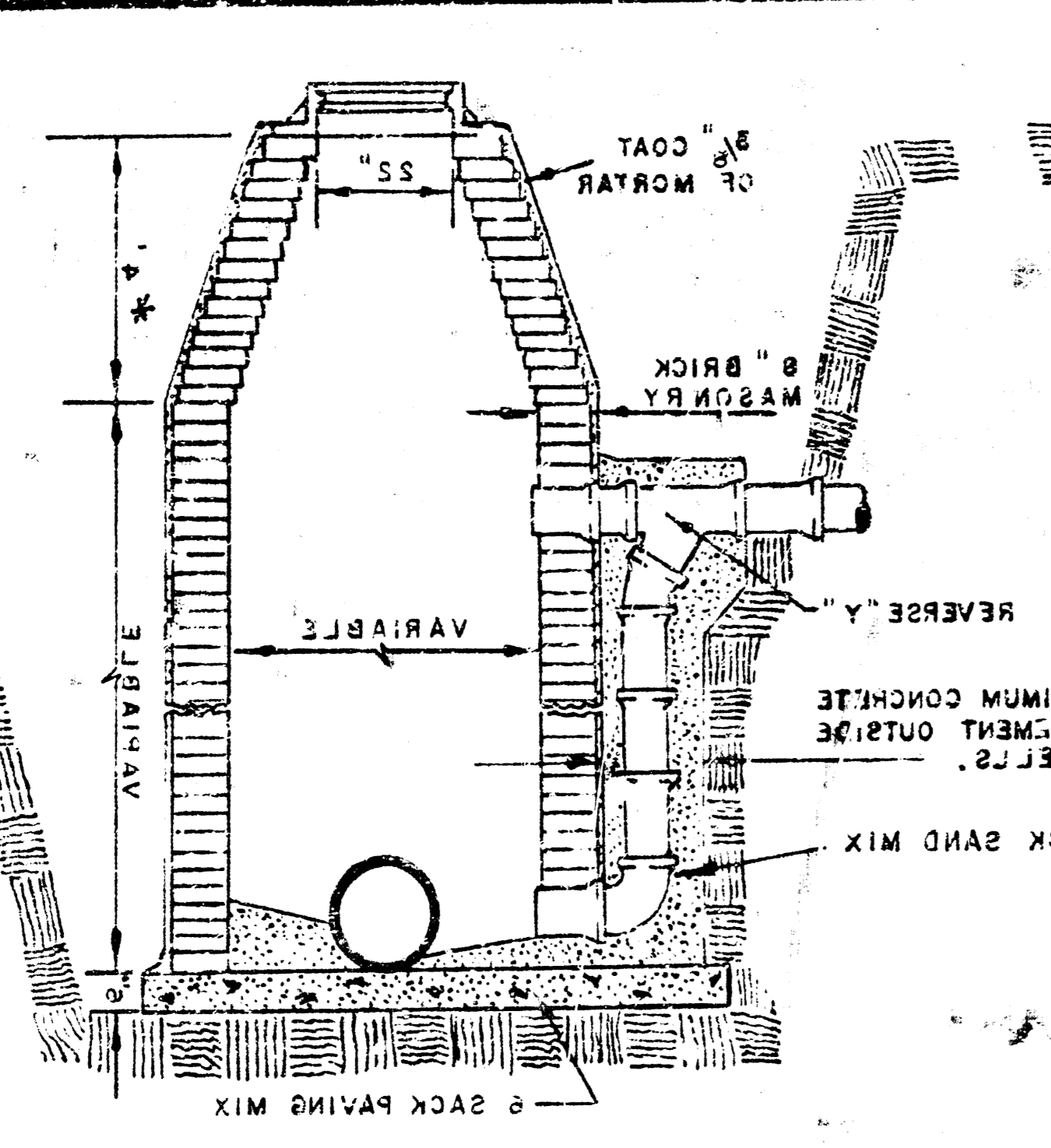
STANDARD MANHOLE
TYPE "B"



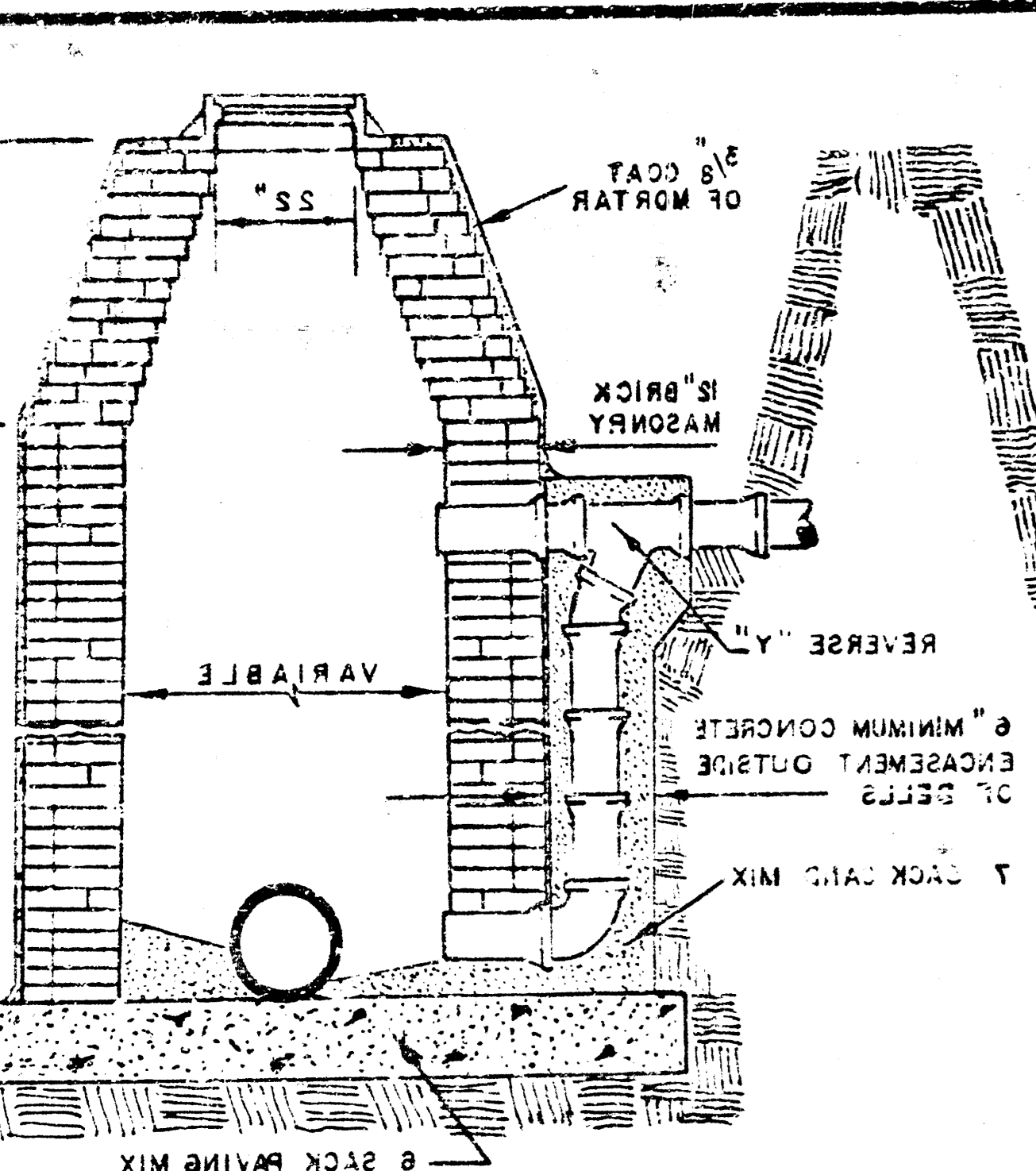
DROP MANHOLE
TYPE "A"



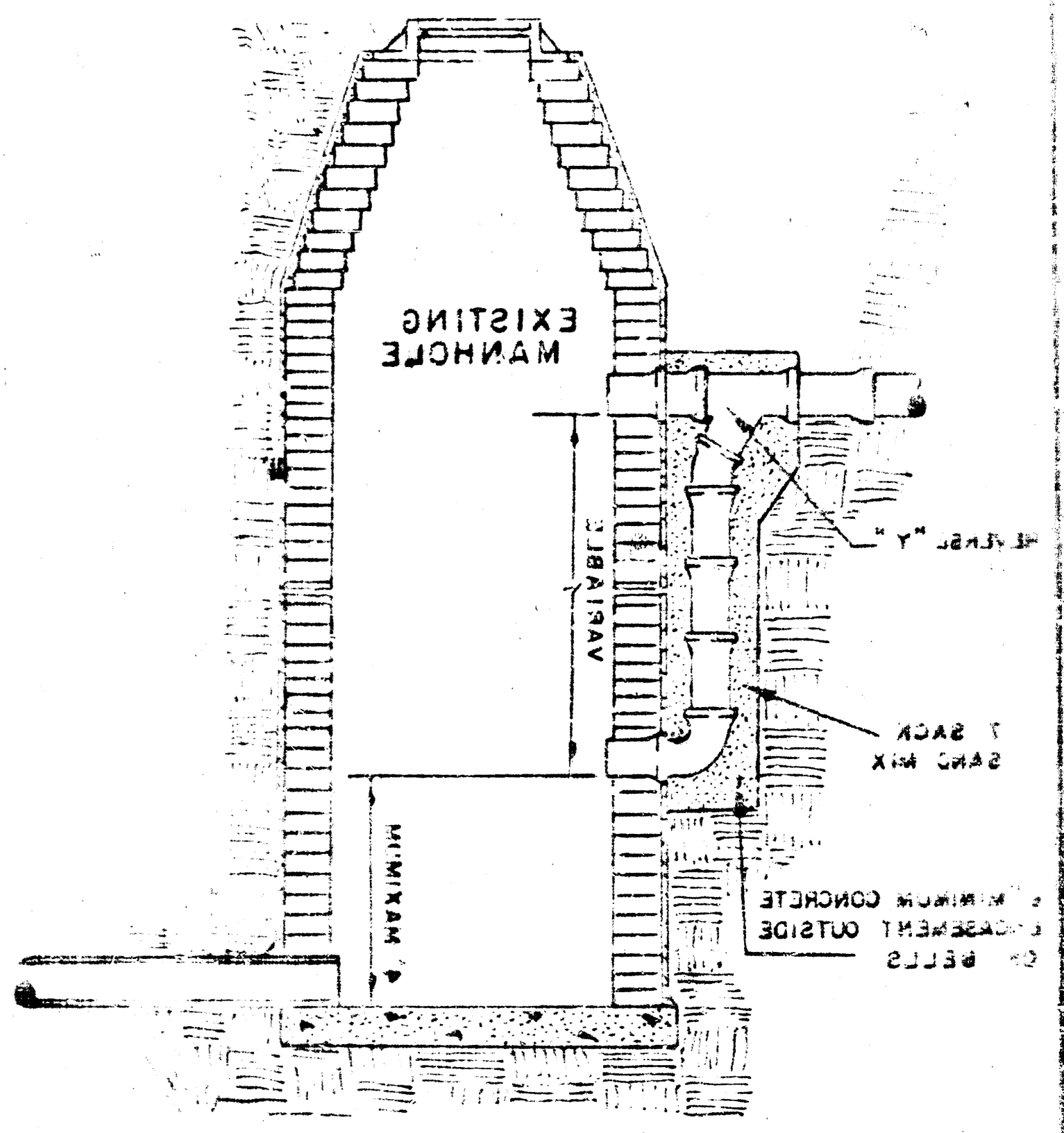
DROP MANHOLE
TYPE "B"



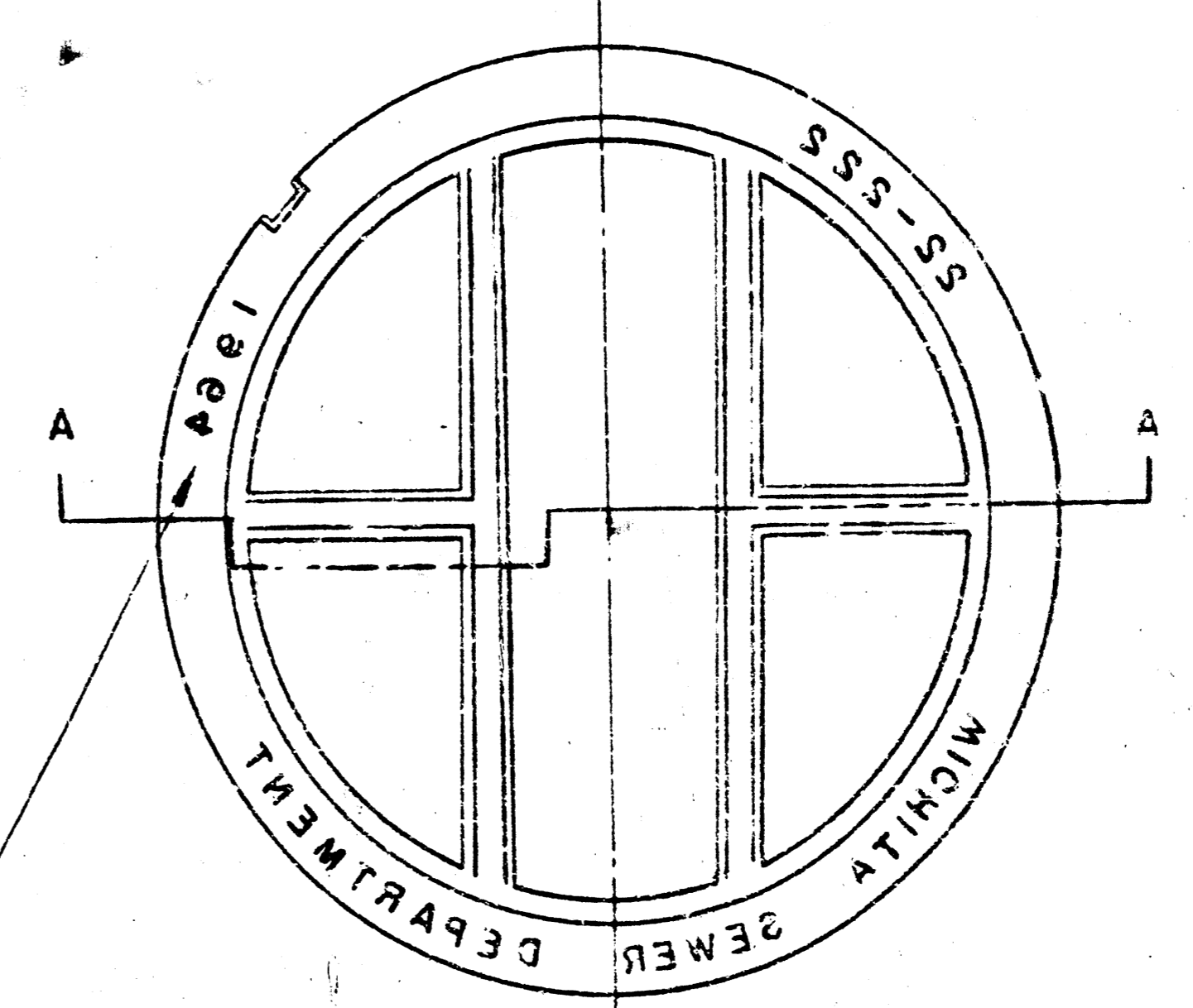
OUTSIDE DROP MANHOLE
TYPE "A"



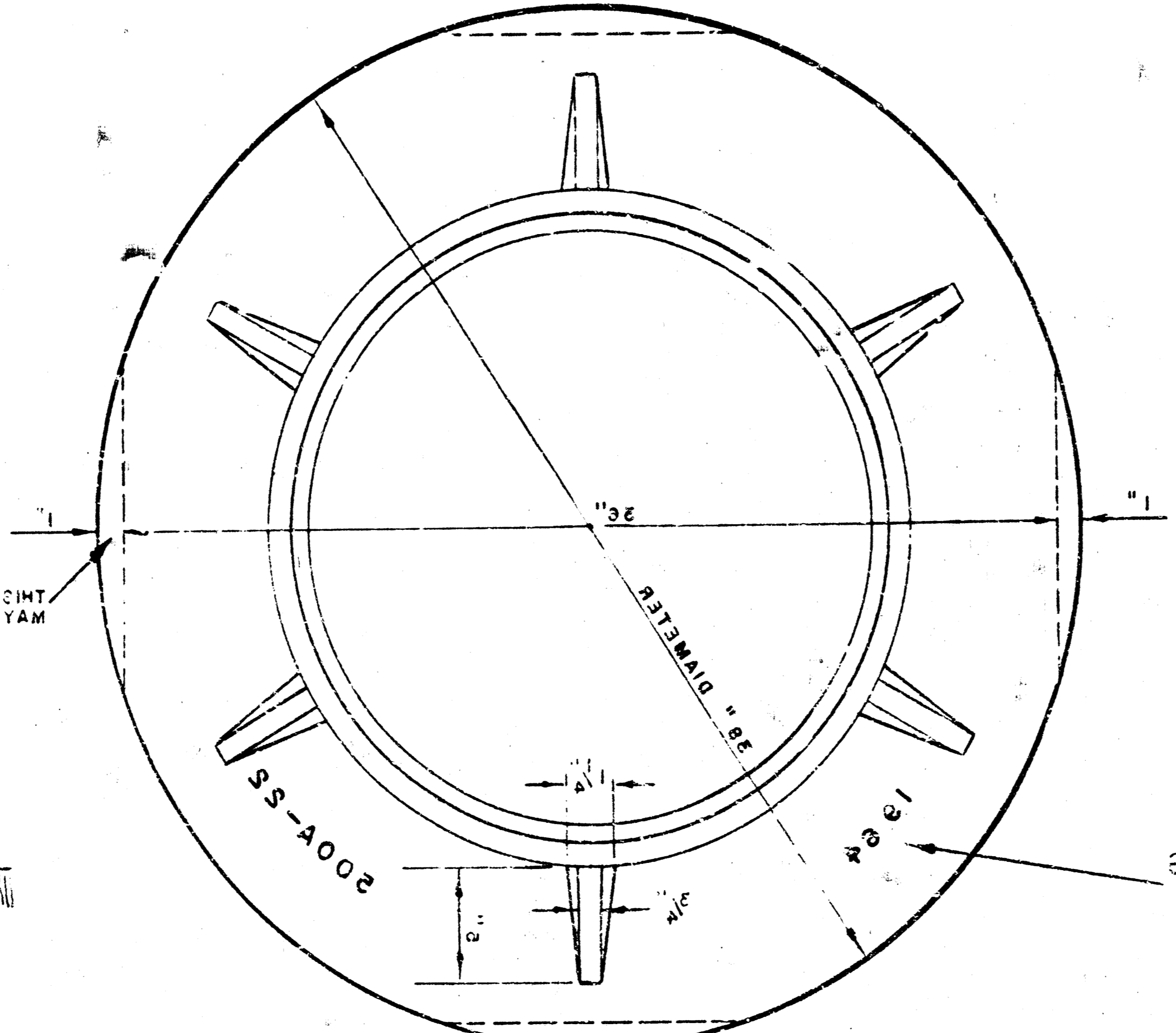
OUTSIDE DROP MANHOLE
TYPE "B"



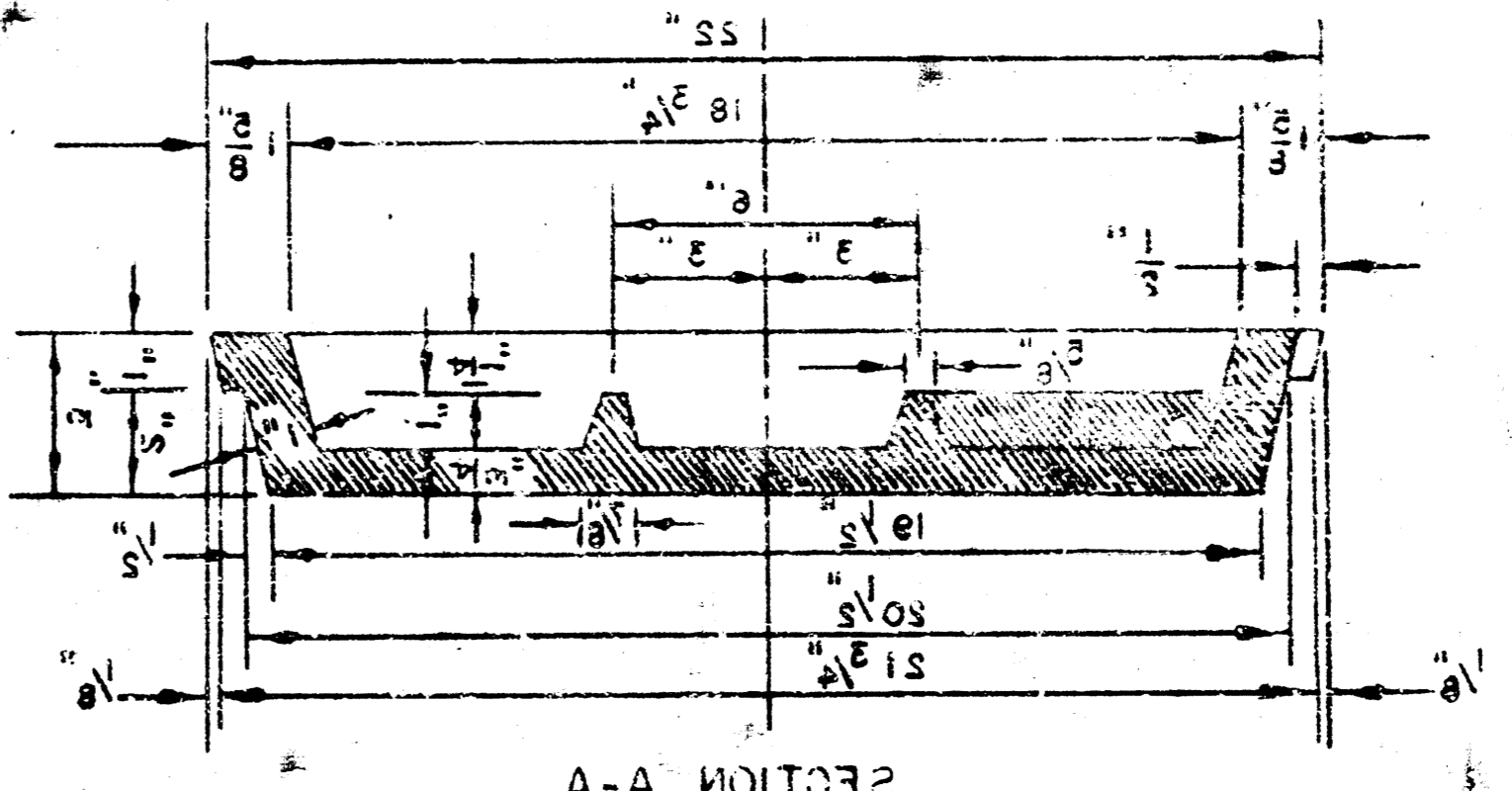
DETAIL OF DROP STACK
FOR EXISTING MANHOLES IN GROUND WATER



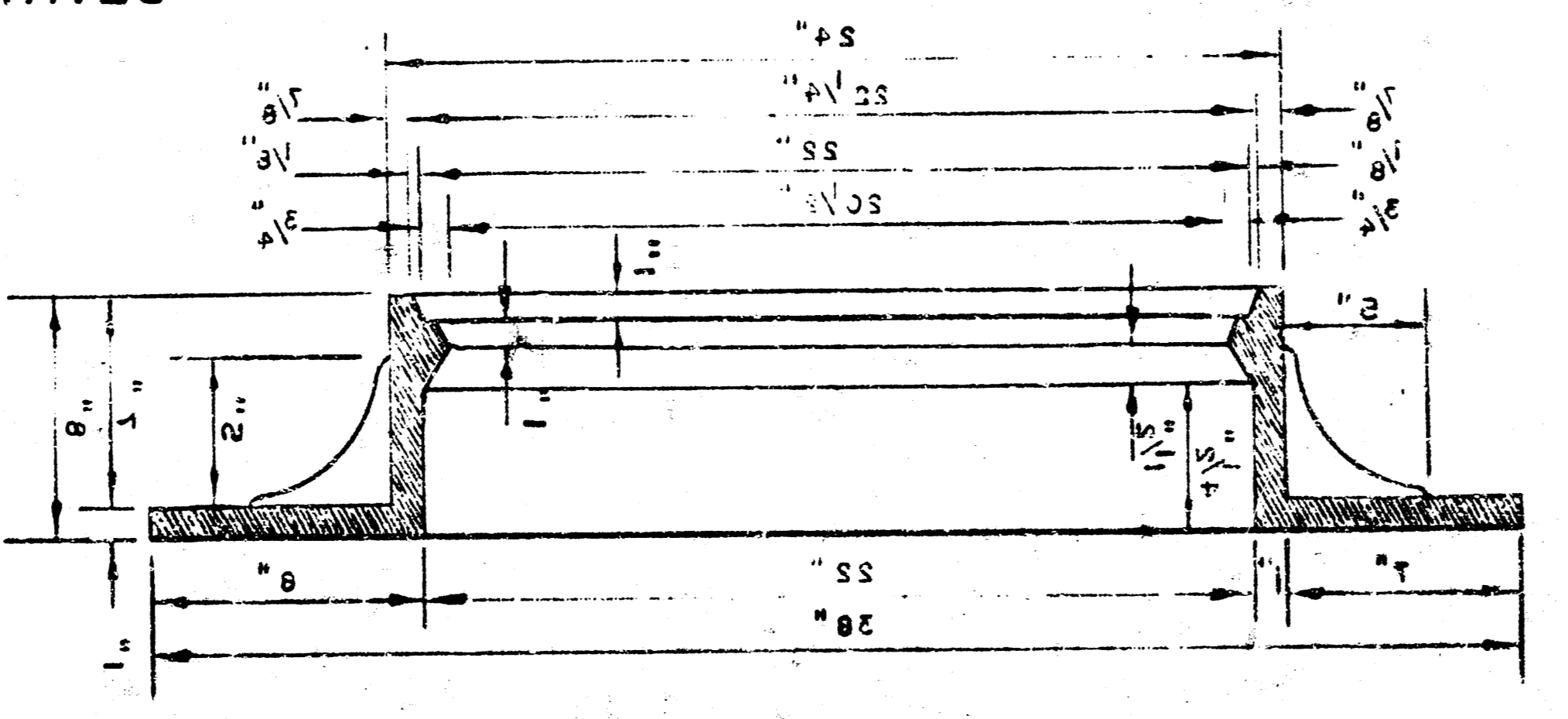
MANHOLE COVER
WEIGHT 110 LB.



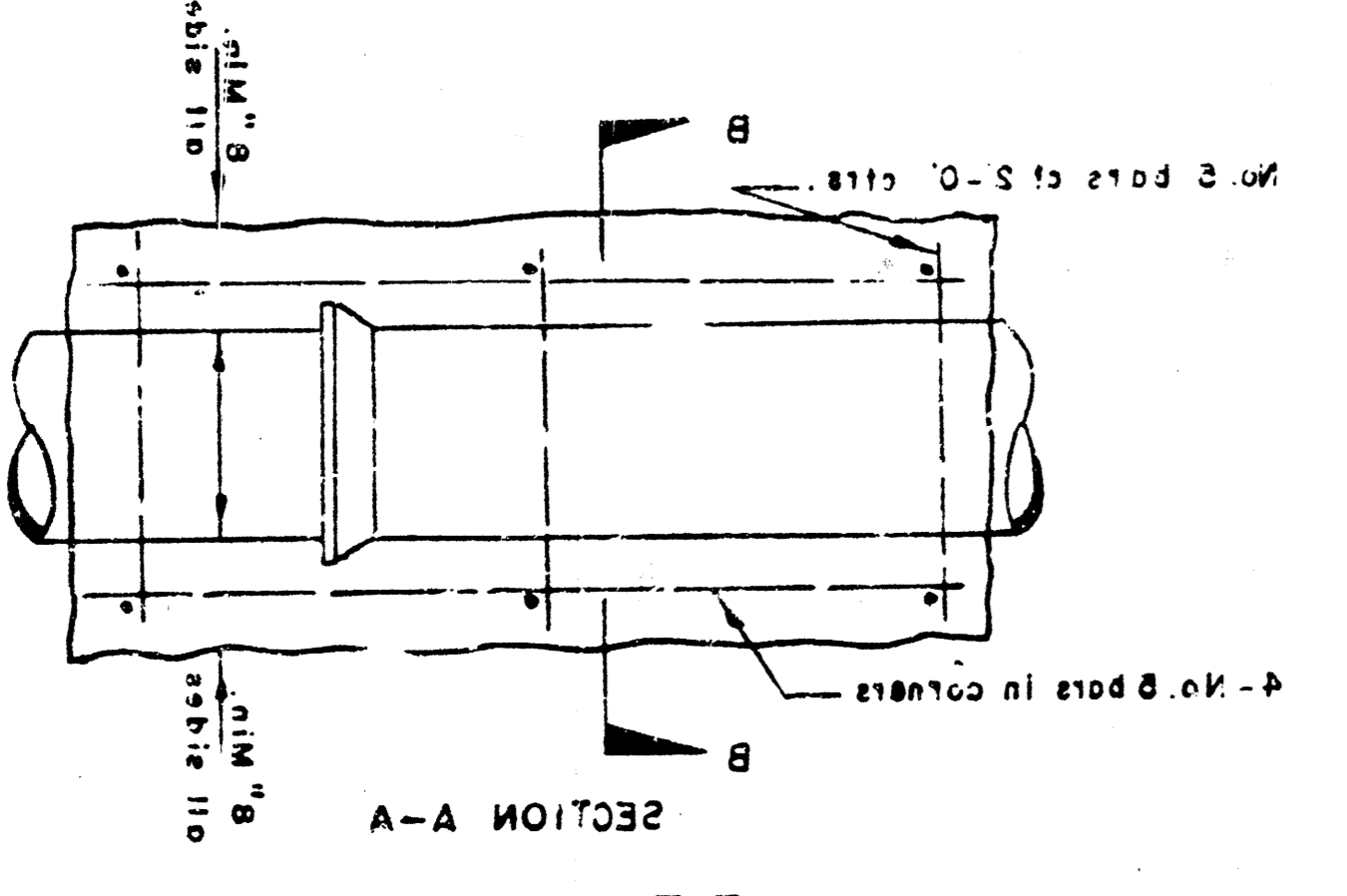
MANHOLE RING
WEIGHT 250 LB.



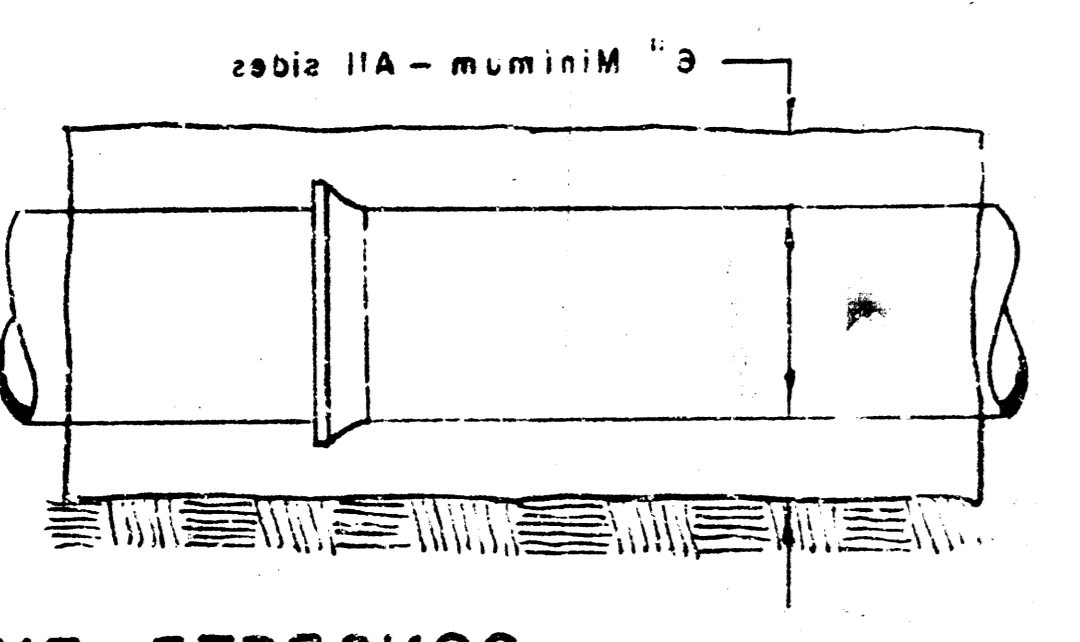
MANHOLE COVER
SECTION A-A



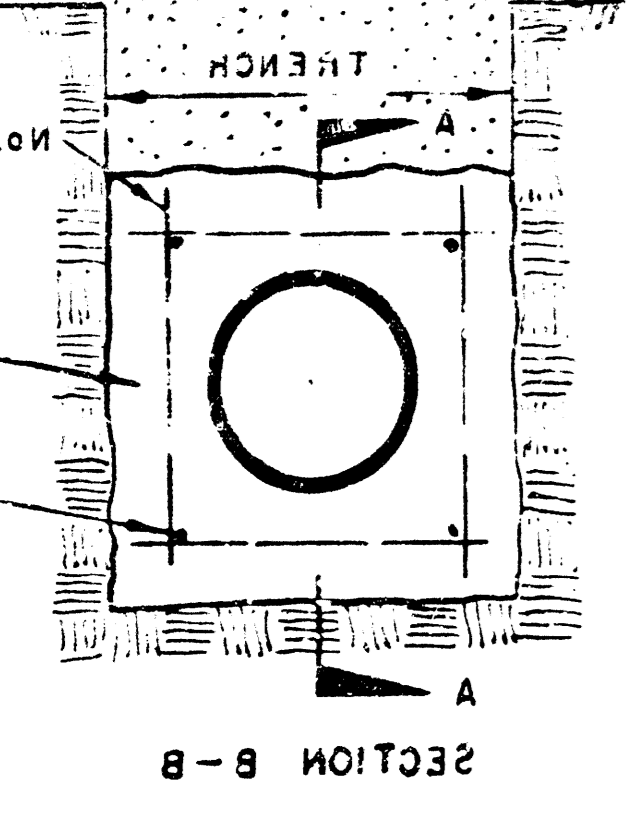
MANHOLE RING
SECTION



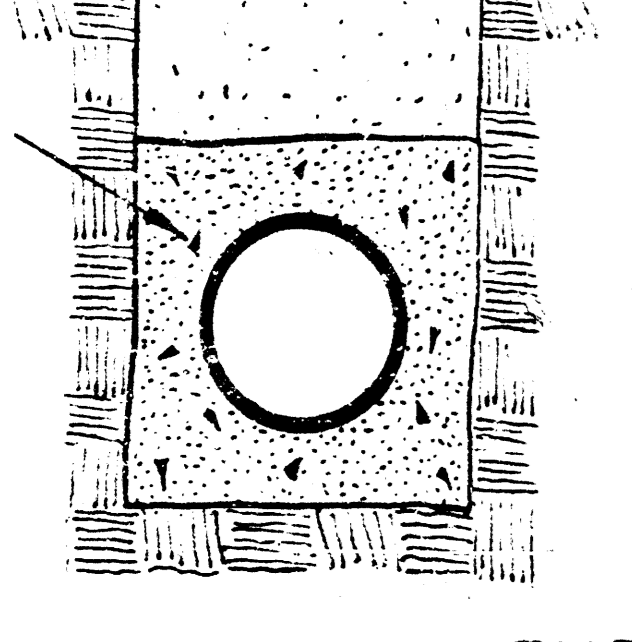
REINFORCED CONCRETE ENCASMENT
FOR STRENGTH



CONCRETE ENCASMENT
FOR COVER



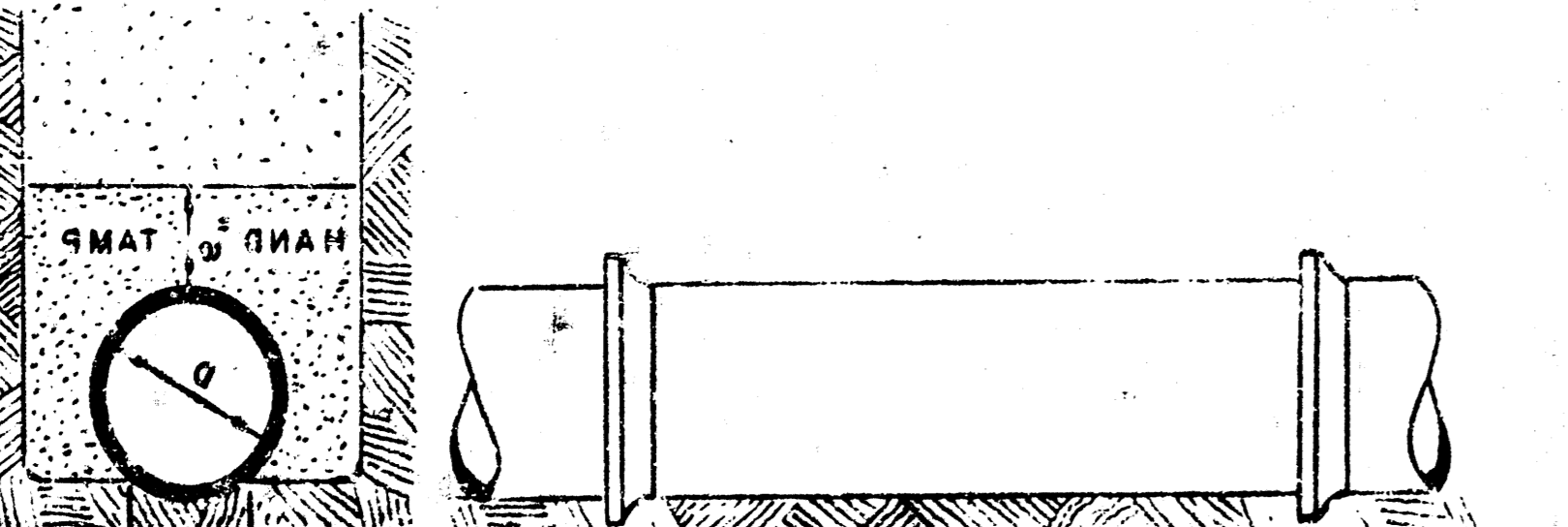
REINFORCED CONCRETE ENCASMENT
FOR STRENGTH



CONCRETE ENCASMENT
FOR COVER

OTHERWISE SPECIFIED ON PLAN. ALL M.H. SHALL BE 2' DIAMETER UNLESS ALL MANHOLES WITH PIPES LARGER PRICE AS OUTSIDE DROP MANHOLES. DROP MANHOLES SHALL BE BID AT ONE SINGLE OR DOUBLE OUTSIDE STANDARD MANHOLES. STANDARD MANHOLES, REGARDLESS OF DIAMETER, SHALL BE BID AT ONE PRICE AS MANHOLES PER CUBIC YARD. CEMENT SHALL CONTAIN 8 SACKS OF THE CONCRETE USED FOR MORTAR IN MANHOLES

ENGINEERING DIVISION
BY
ADAPTED AS STANDARD DE
SEWER APPURTENANCE
DETAILS OF



DETAIL OF CONCRETE CRADLE

ORDINARY BEDDING METHOD
FOR CLAY PIPE