

FRIENDS UNIVERSITY 3RD ADDITION SANITARY SEWER RELOCATION

PRIVATE PROJECT NUMBER 1322 PPS (607861)

GENERAL NOTES

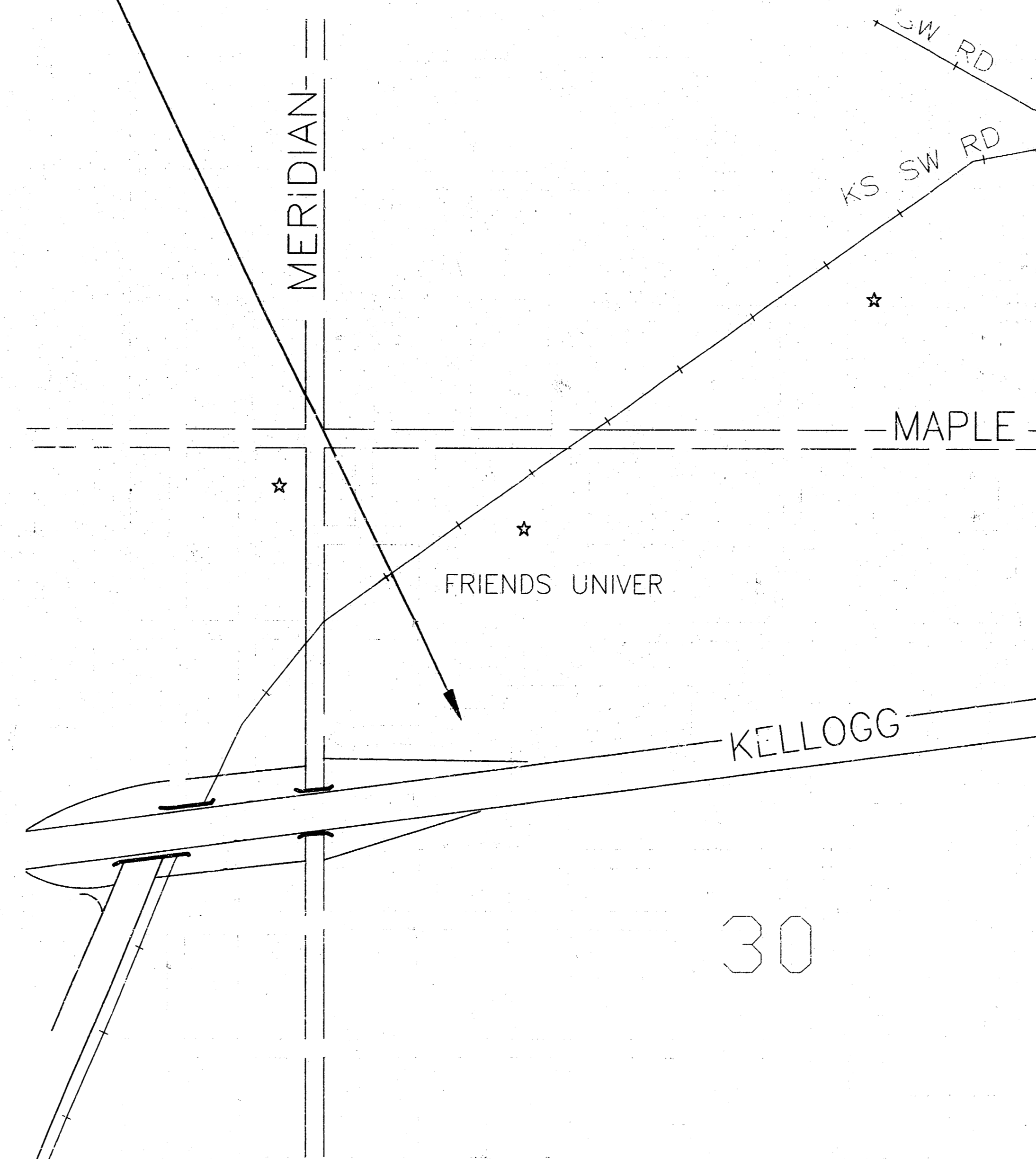
- Contractor will be required to provide a minimum advance notice of twenty-four (24) hours to utility companies prior to starting any excavation as follows:

Kansas One-Call	687-2470
-----------------	----------

The Contractor must notify the following in case of an emergency:

Cox Communications	262-0661
Kansas Gas Service	383-8600
Westar	383-8600
Aquila Energy	1-800-303-0357
Southwestern Bell Telephone Company	1-800-286-8313
City of Wichita Water Department	262-6000
City of Wichita Sewer Maintenance	262-6000
- Existing utilities and their location, as shown on the plans, represent the best information obtainable for design. Location information has been obtained from the various utility companies and is either from company record drawings or company-provided field locations. The Contractor will be required to work around existing utilities within the right-of-way which do not conflict with proposed construction.
- A saw cut of at least one-half the depth of existing surface courses or one-fourth the depth of existing total pavement thickness shall be provided at locations where proposed construction abuts an existing surface course or pavement for which partial removal of that surface or pavement is required, except when such saw cuts are within three (3) feet of an existing joint the limits of removal shall be extended to the existing joint. Saw cuts will not be paid for directly and this cost shall be considered as subsidiary to the removal of the surface or pavement.
- Rubble from the removal of miscellaneous structures and excess excavation which is to be wasted shall be disposed of on sites to be provided by the Contractor. These sites shall be approved by the Engineer as to suitability, appearance and site location. Locations that, in the opinion of the Engineer, will leave an unsightly appearance will not be approved.
- All disposal sites must be approved by the Kansas Department of Health and Environment. Material either stockpiled or disposed of in a flood plain would require a Kansas State Board of Agriculture permit. Any material dumped in waters of the United States or wetlands is subject to U.S. Corps permitting regulations. Any material buried or stockpiled beyond approved of Engineers construction limits would require additional archeological investigations unless buried in a previously approved borrow location.
- The Contractor shall maintain flow through existing sewer during construction.
- This project is located within the limits of a larger project which will include building construction. The General Contractor for the project will submit a Storm Water Pollution Prevention Plan for the entire project prior to beginning any work on this street project.
- This project is to be constructed in accordance with City of Wichita Standard Specifications for the Construction of City Projects, and Policy on Construction of Public Works Improvements by Private Contract.
- No work shall begin on this project before required bonds are submitted to the City of Wichita, and the project inspector has been notified.

PROJECT AREA



Boardman Enterprises- Contractor
 Bohannon, KE Miller- Inspector
 Released 10/10/05
 As-Built
 .pdf by JDL 10/10/05

INDEX OF SHEETS

- TITLE & GENERAL NOTES
- PLAN/PROFILE
- SANITARY SEWER ABANDONMENT PLAN
- SHALLOW TYPE 'P' MANHOLE DETAILS
- PLAT COPY

APPROVED AS NOTED
 BY CITY ENGINEER OF WICHITA

Sanitary Sewers URH 3/27/03
 Storm Sewers _____
 Driveway Approaches _____
 Water Mains _____
 Paving _____

NOTE TO CONTRACTORS

Inspection and testing for this project are to be provided by a Licensed Consulting Engineering Firm under contract with the Owner/Developer. Said inspection to be in accordance with the City of Wichita standard construction engineering practices and certified by a Licensed Professional Engineer. No work shall be performed in dedicated easements or public right-of-way by the Contractor without such inspection, nor shall any work be commenced without written authorization by the City Engineer.

BENCH MARKS

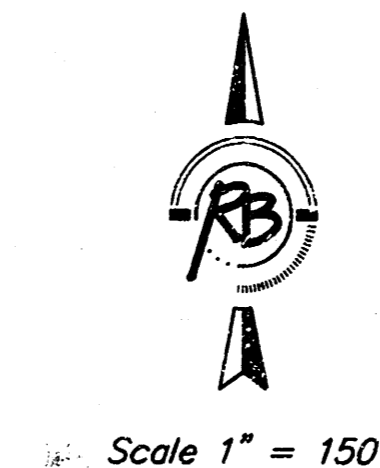
City of Wichita (Bress Disc) in turn, stand N.E. corner traffic sign light base, 185.60' S. of Kellogg, 19.27' W. of E. S. bound Meridian.
 Elev. = 110.69 (City of Wichita datum)

I.C. N. return N.W. corner Taft & Everett
 Elev. = 109.14 (City of Wichita datum)

I.C. E. return N.E. corner Taft & St. Clair
 Elev. = 109.81 (City of Wichita datum)

I.C. S. return S.W. corner intersection Bonn & University
 Elev. = 108.5 (City of Wichita datum)

CITY OF WICHITA, KANSAS
 NEIL D. CABLE, P.E., CITY ENGINEER



Date 4/27/03
 Signed _____

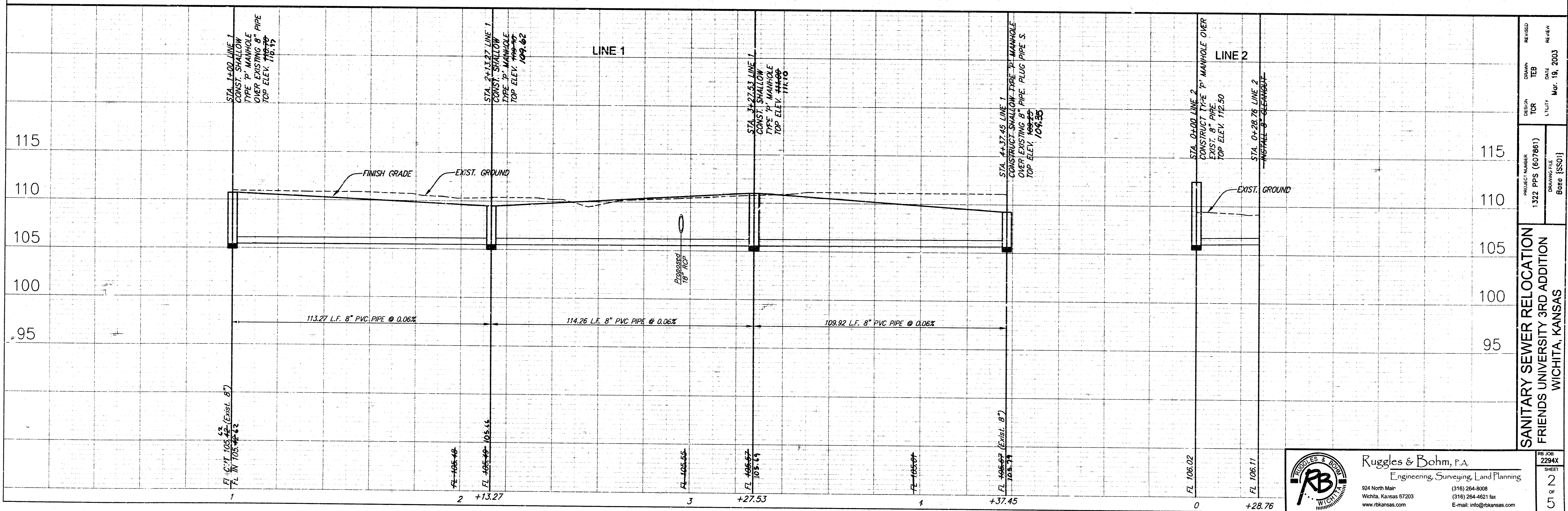
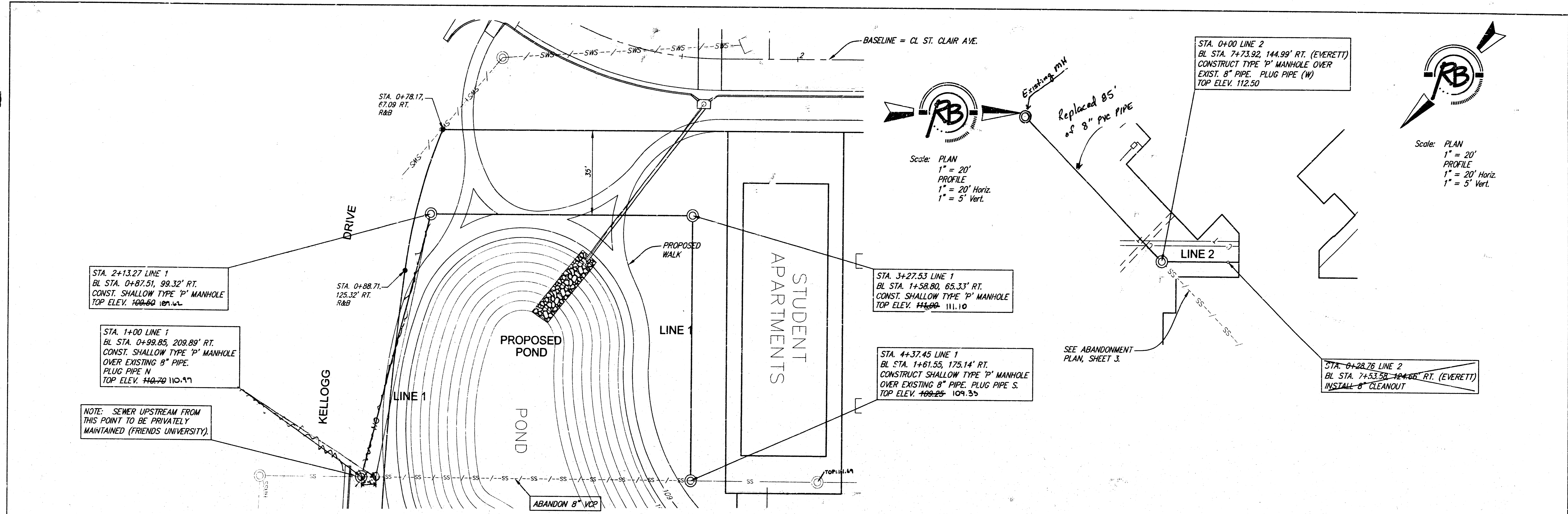
Shawn C. Ruggles
 3-19-03



Ruggles & Bohm, P.A.
 Engineering, Surveying, Land Planning
 924 North Main (316) 264-8008
 Wichita, Kansas 67203 (316) 264-4621 fax
 www.rkansas.com E-mail: info@rkansas.com

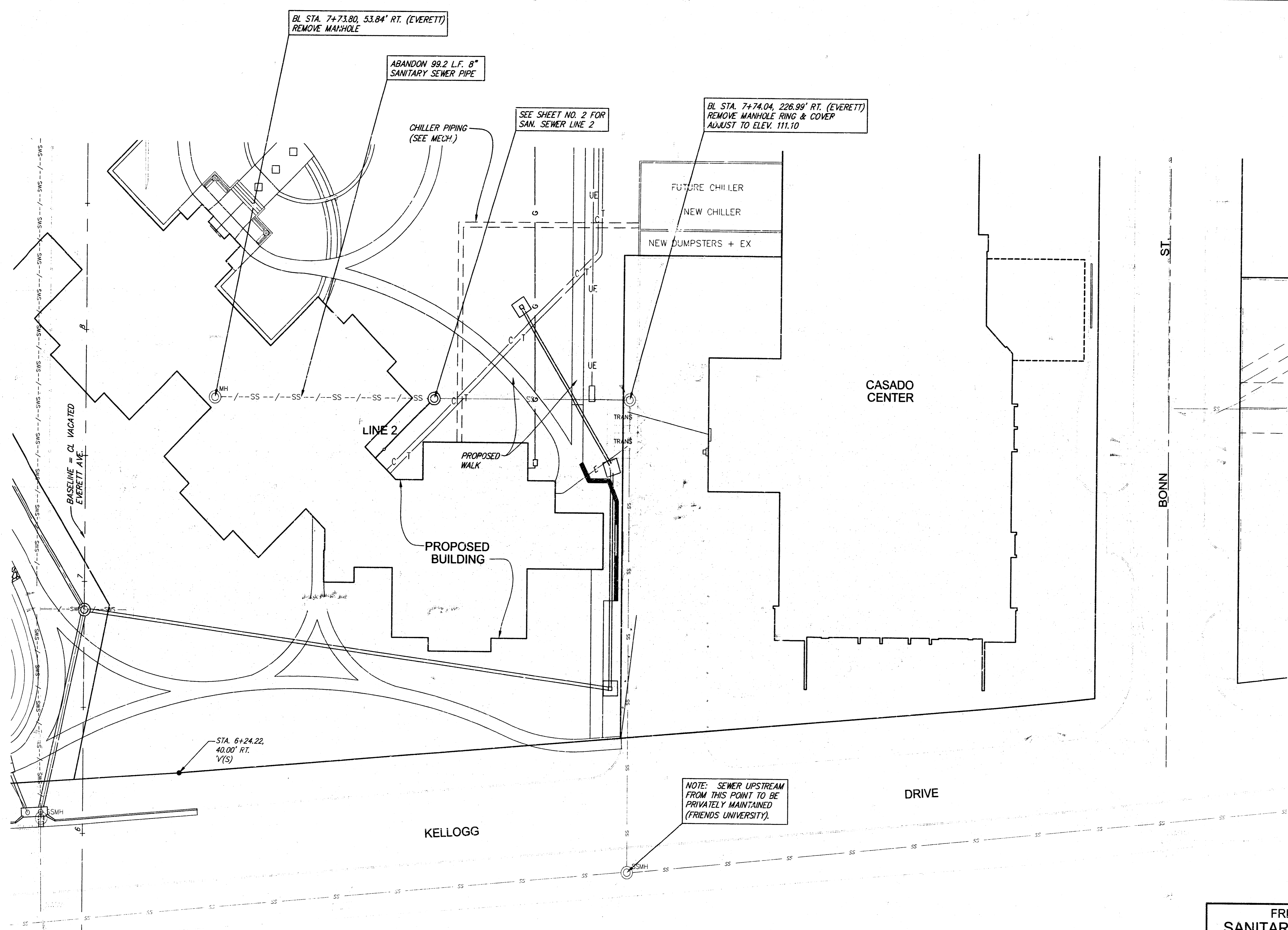
2294X

18 15 02 08



PROJECT NUMBER 1322 PPS (607851)	DESIGN TCR	DATE Mar. 18, 2003
DRAWN BY Base (SS01)	UTILITY	REVISION
SANITARY SEWER RELOCATION FRIENDS UNIVERSITY 3RD ADDITION WICHITA, KANSAS		

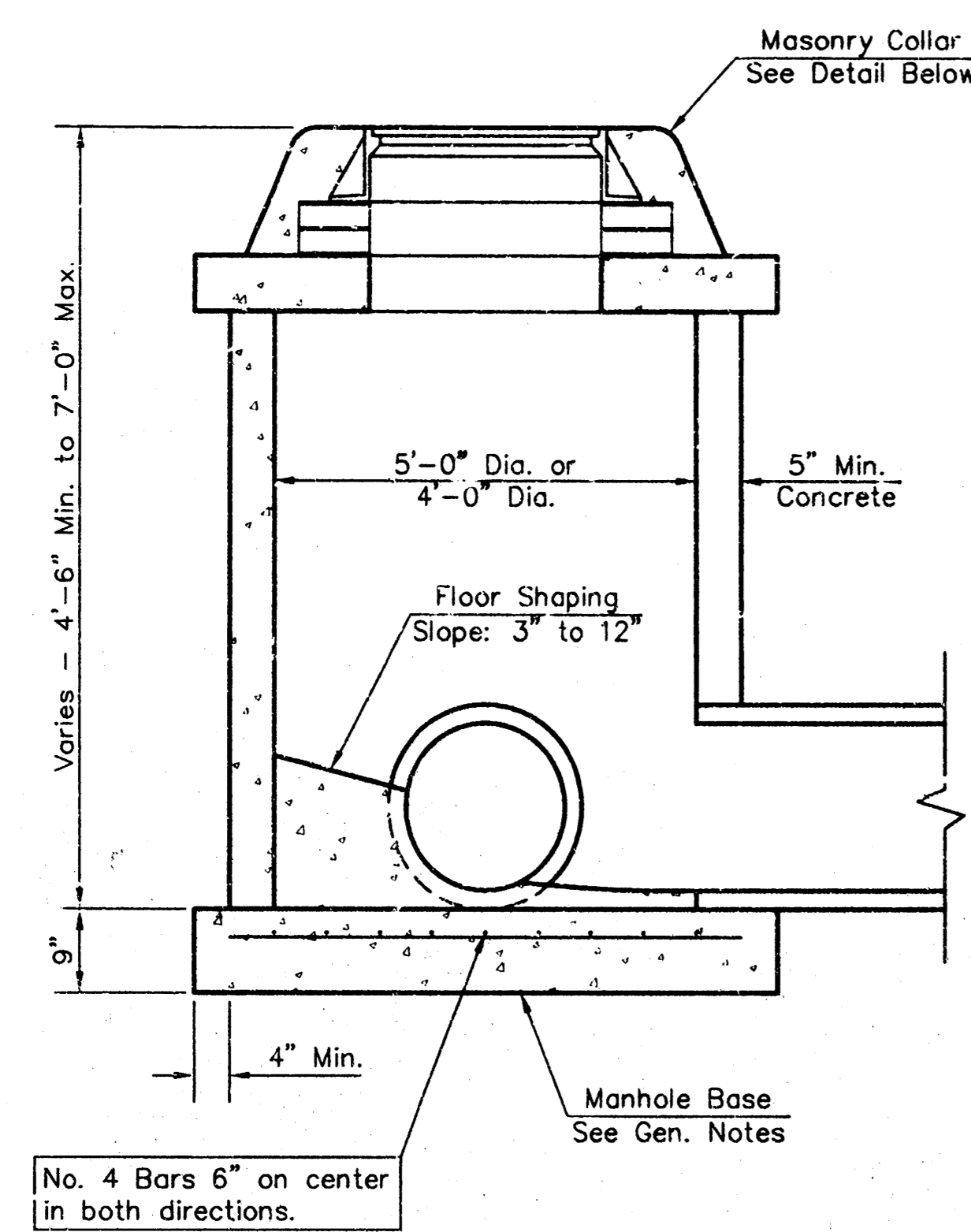
Ruggles & Bohm, P.A.
 Engineering, Surveying, Land Planning
 924 North Main
 Wichita, Kansas 67203
 www.rtkansas.com
 (316) 264-8008
 (316) 264-4621 fax
 E-mail: info@rtkansas.com



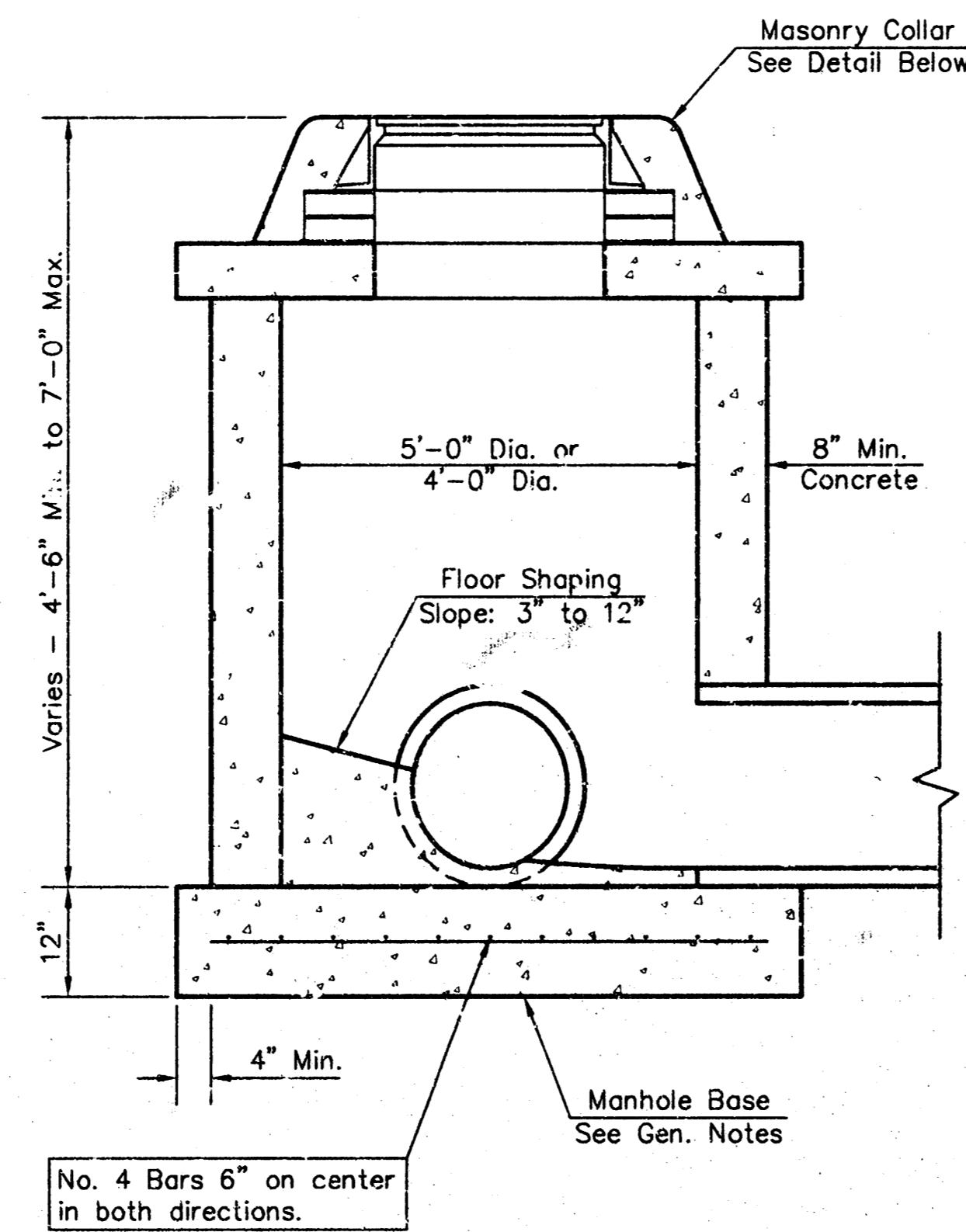
Scale: 1 = 20'

**FRIENDS UNIVERSITY 3RD ADDITION
SANITARY SEWER ABANDONMENT PLAN
WICHITA, KANSAS**

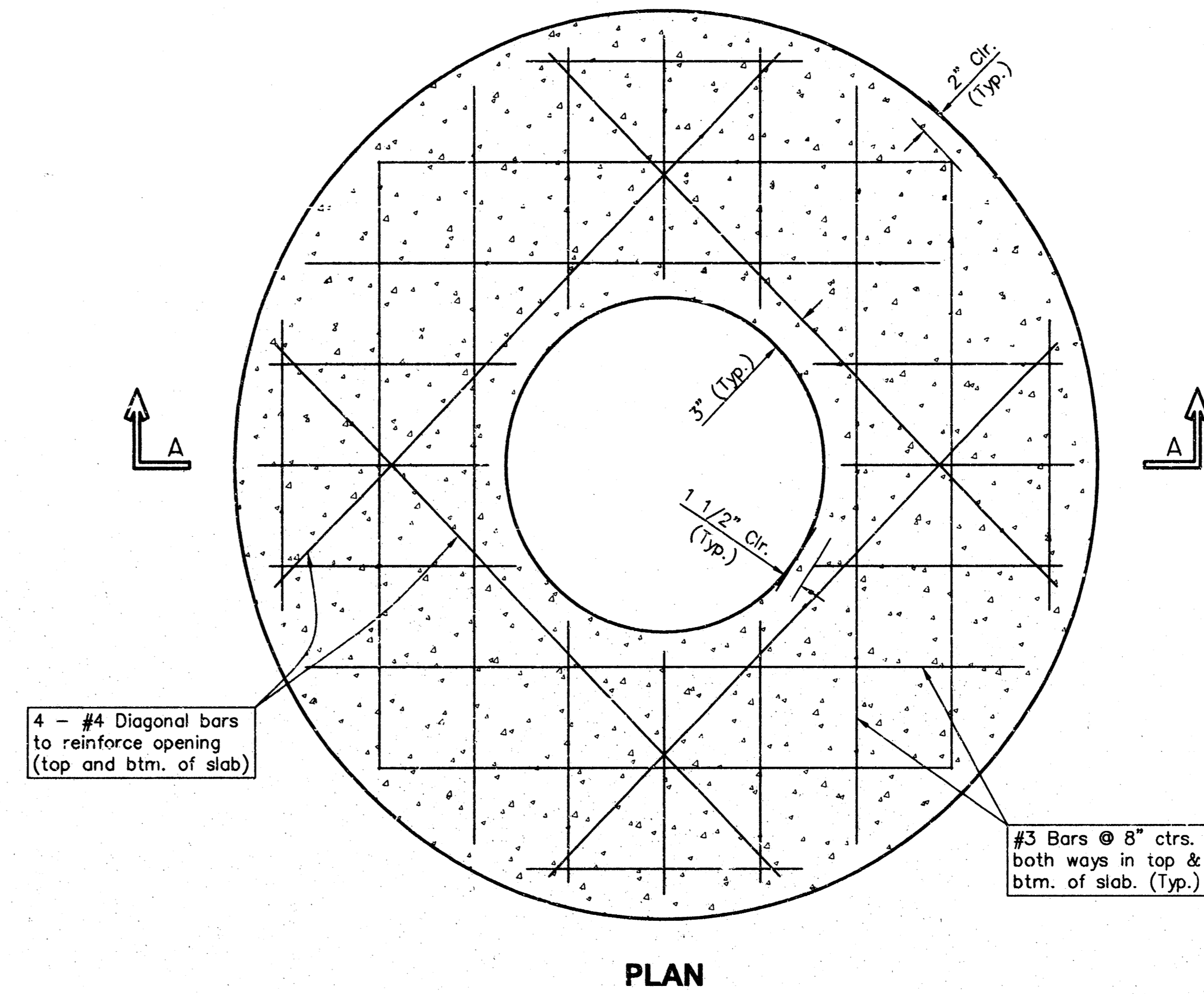
 Ruggles & Bohm, P.A. Engineering, Surveying, Land Planning 924 North Main Wichita, Kansas 67203 www.rbkansas.com (316) 264-8008 (316) 264-4621 fax E-mail: info@rbkansas.com	DESIGN TCR	SHEET 3 OF 5
	DRAWN TEB	
REVIEW	UTILITY	DATE Mar. 19, 2003
DRAWING FILE Bose {SS02}	PROJECT NUMBER 1322 PPS (607861)	



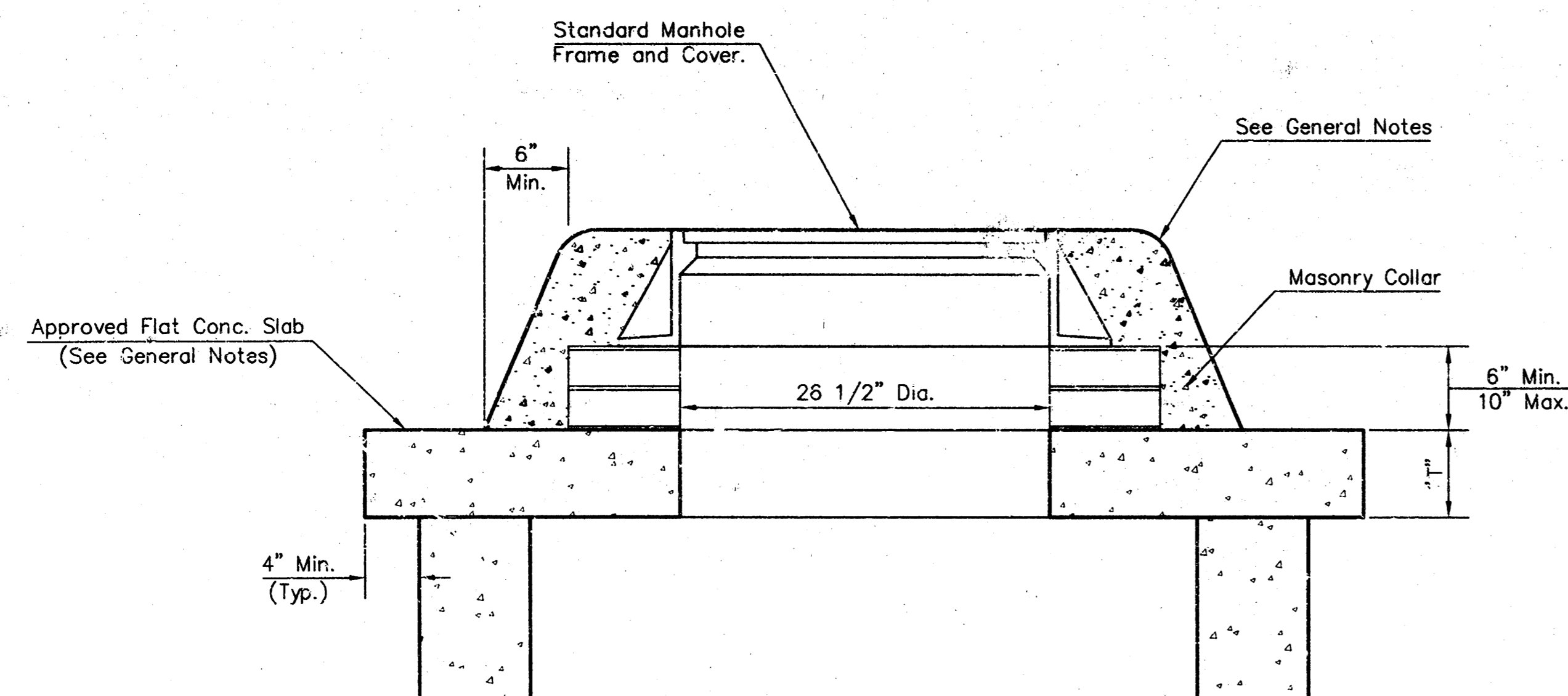
SHALLOW TYPE "P" MANHOLE



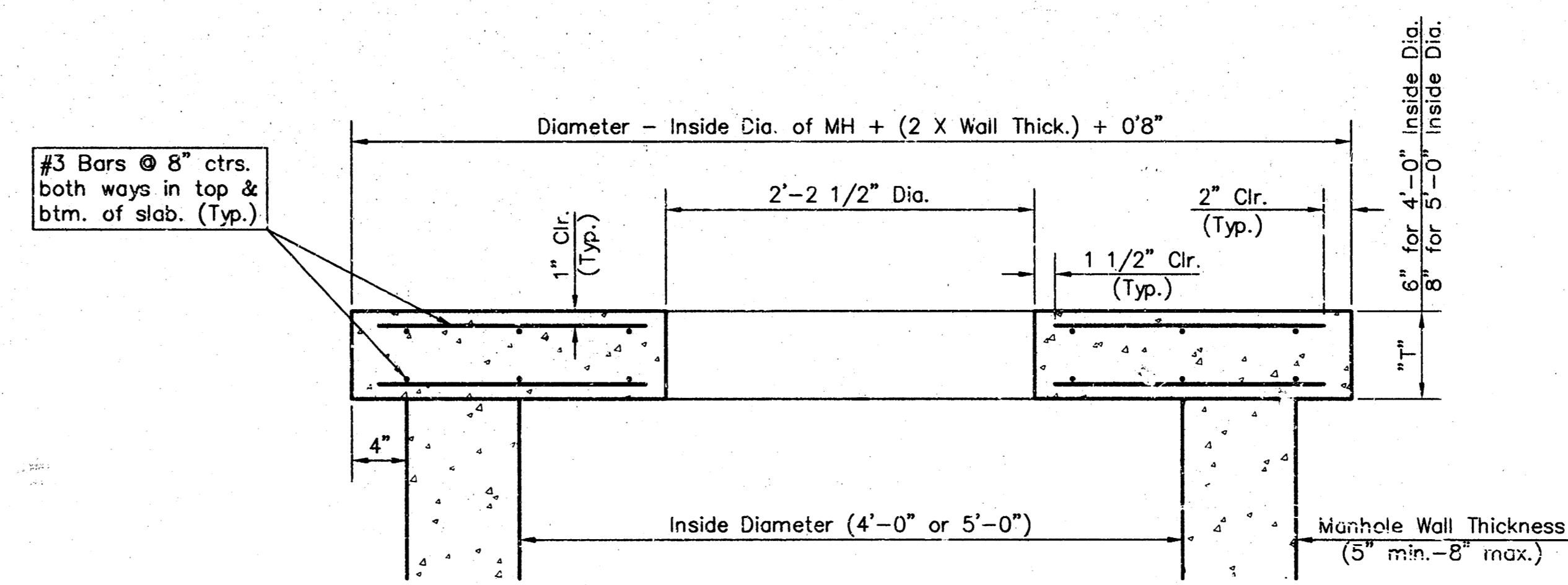
SHALLOW TYPE "C" MANHOLE



PLAN



MASONRY COLLAR DETAIL



SECTION A-A
FLAT CONCRETE SLAB DETAILS

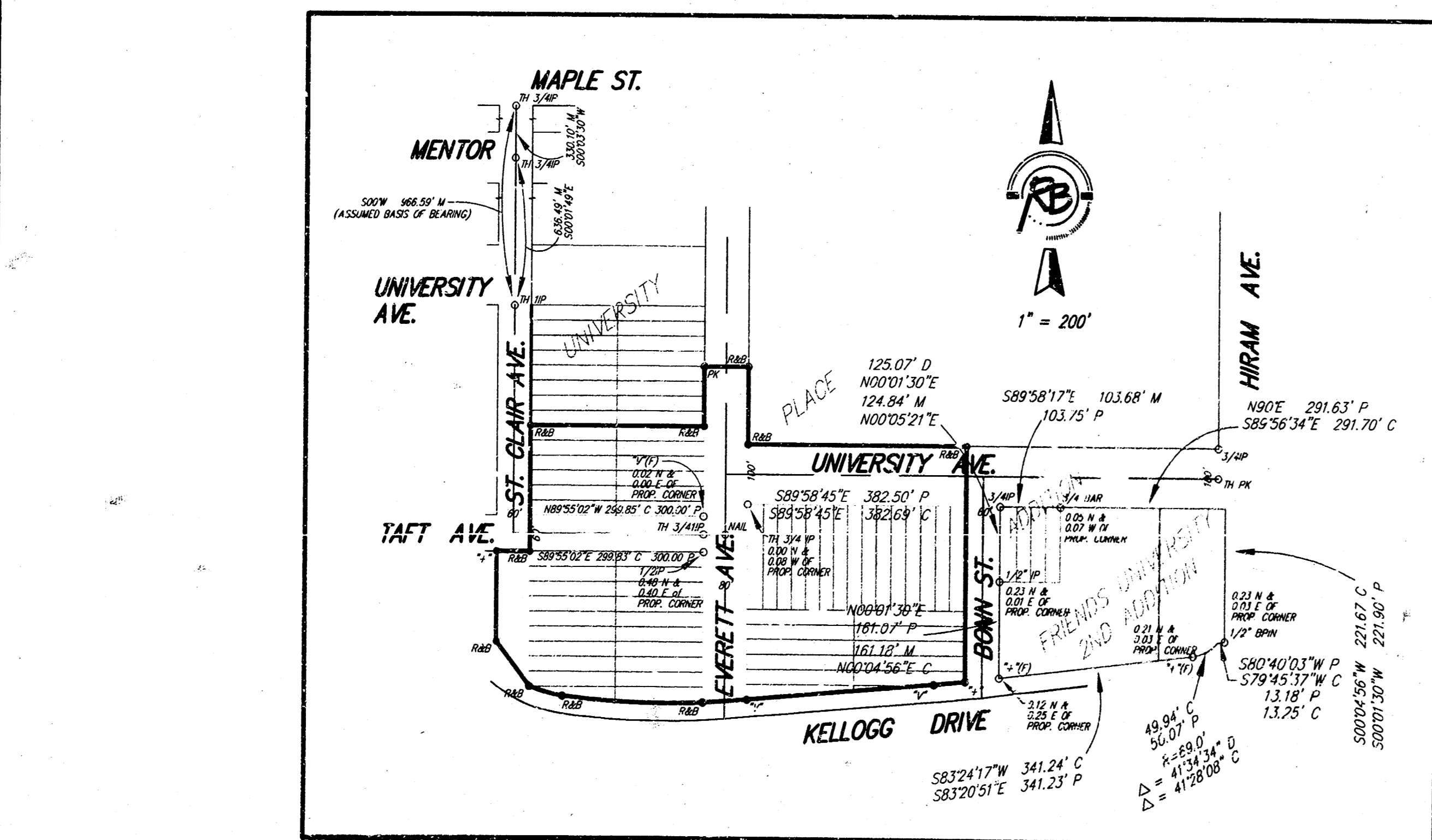
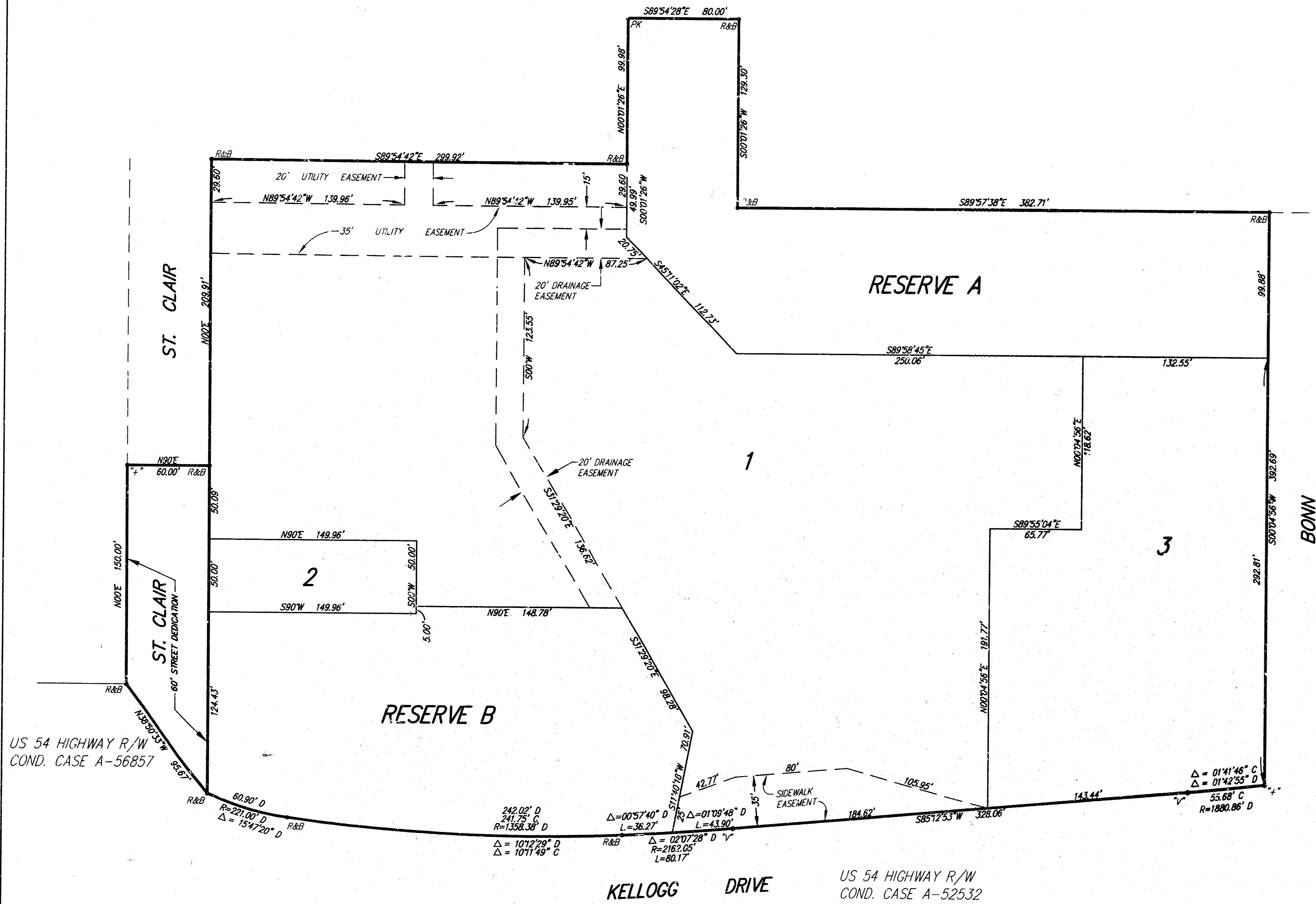
GENERAL NOTES

- Mortar used in masonry construction shall contain 8 sacks of cement per cubic yard. Concrete used in manhole bases shall conform to the requirements of concrete for concrete pavement construction as specified in the city standard paving specifications using city concrete cement mix without air entraining admixture. Mortar shall be placed around the manhole ring as shown on the drawings when manholes are constructed in unpaved areas. Manholes constructed where pipe sizes are smaller than 24" shall have an inside diameter of 4". Manholes constructed where pipe sizes are 24" or larger shall have an inside diameter of 5". Completed manhole shall be without leaks and water tight.
- Reinforcing steel shall be installed in the manhole bases and shall consist of no. 4 bars placed on 6" centers in both directions. The manhole base reinforcement shall be placed 6" above the bottom of the manhole base. All costs for furnishing and installing reinforcing steel shall be included in the unit price bid for the manhole.
- The floors of all manholes shall be shaped with flow channels such that the manholes will be self cleaning and free of areas where solids could be deposited as sewage flows through the manhole from all inlet pipes to the outlet pipe. Flow channels shall be formed to match the bottom halves of the inflowing pipes and the outflowing pipe as shown by the drawings. Manhole floors shall have slopes of 3 inches per foot in the areas outside of the flow channels sloped toward the flow channels. Pipes laid through manholes shall have the top half removed to neat lines for the full inside diameter of the manhole. Manhole floors shall then be shaped around the bottom half of the pipe which forms the flow channel.
- Pipes installed within the excavation made for the manhole shall be cradled with concrete to the limits of the manhole excavation. When clay pipe is used, the cradle shall extend to the first joint outside the manhole. The cradle shall be terminated at the clay pipe joint in a manner which will maintain the flexibility of the joint. Cost of cradle within manhole excavation or to clay pipe joints adjacent to manhole shall be included in the unit price bid for the manhole.
- Manhole cover castings and manhole frame castings shall conform to the requirements as indicated in the standard specifications and as shown in the standard detail drawings.
- The crowns of inflowing pipes shall never be set lower than the crown of the outflowing pipe.
- Standard shallow manholes type "P" and "C" shall be paid for at the unit price bid per each for the type and diameter indicated. All standard shallow manhole diameters will be 4' unless indicated otherwise.
- All brick used in manhole construction shall meet Grade SW of ASTM C652 or C62-87.

<p>THE CITY OF WICHITA</p> <p>CITY ENGINEER'S OFFICE CITY HALL - SEVENTH FLOOR 455 NORTH MAIN STREET WICHITA, KANSAS 67202 (316) 268-4501 (316) 268-4114 FAX</p>	SHALLOW MANHOLES TYPE 'P' AND 'C'	
	M. E. LINDEBAK P.E. - CITY ENGINEER	
PROJECT NUMBER	OCA #	
1322 PPS	607861	
DATE	SHEET 4 OF 5	

FRIENDS UNIVERSITY 3RD ADDITION

Wichita, Sedgwick County, Kansas



SURVEY MARKER LEGEND

- P = PLATTED
- M = MEASURED
- D = DESCRIBED
- C = CALCULATED
- 1/2" PIP = 1/2" IRON PIPE (FOUND)
- 3/4" PIP = 3/4" IRON PIPE (FOUND)
- 3/4" BAR = 3/4" BAR (FOUND)
- 1/2" REB = 1/2" REBAR W/BAUGHMAN CAP
- NAAL = CONCRETE NAIL (FOUND)
- CHSELED "V" (FOUND)
- TH 3/4" PIP = 3/4" IRON PIPE IN THIMBLE (FOUND)
- TH 1" PIP = 1" IRON PIPE IN THIMBLE (FOUND)
- TH PK = PK NAIL IN THIMBLE (FOUND)
- "Y" (Y) = CHSELED "Y" (FOUND)
- "Y" (Y) = 1/2" REBAR W/REB CAP (SET)
- "Y" (Y) = CHSELED "Y" (SET)
- "Y" (Y) = CHSELED "Y" (SET)
- PK = PK NAIL (SET)



State of Kansas)
Sedgwick County) SS

We, Ruggles & Bohm, P.A., Land Surveyors in aforesaid county and state, do hereby certify that, under the supervision of the undersigned, we have surveyed and platted "FRIENDS UNIVERSITY 3RD ADDITION", Sedgwick County, Kansas, and that the accompanying plat is a true and correct exhibit of the property surveyed, described as and being a replat of odd-numbered Lots 79 through 109 on St. Clair Avenue, even-numbered Lots 80 through 112 on Everett Avenue, odd-numbered Lots 101 through 111 on Everett Avenue, odd-numbered Lots 143 through 171 on Shirley (now University) Avenue, and even-numbered Lots 102 through 112 on Bonn Street; TOGETHER WITH all of vacated St. Clair Avenue right-of-way lying south of Burgess (now Taft) Avenue, all of Shirley (now University) Avenue right-of-way lying west of the west line of Bonn Avenue, all of Burgess (now Taft) Avenue right-of-way lying east of the east line of St. Clair Avenue, and all of Everett Avenue right-of-way, all as platted in University Place Addition to Wichita, Sedgwick County, Kansas; EXCEPT those parts lying south of the north line of highway right-of-way condemned in Cases A-52532 and A56857.

All public easements and dedications being vacated by virtue of K.S.A. 12-512(b).

Ruggles & Bohm, P.A.

Land Surveyor

Thomas C. Ruggles

Know all men by these presents that we, the undersigned, have caused the land described in the surveyor's certificate to be platted into Lots, a Street and Reserves, to be known as "FRIENDS UNIVERSITY 3RD ADDITION", Wichita, Sedgwick County, Kansas. The Street is hereby dedicated to and for the use of the public. The sidewalk easement is hereby granted for construction and maintenance of public sidewalks. The utility easements are hereby granted as indicated for the construction and maintenance of all public utilities. The drainage easement is hereby granted as indicated for the construction and maintenance of a storm sewer system. A drainage plan for the plat is on file in the office of the City Engineer. All drainage easements and reserves shall remain at established grades, or as modified with the approval of the City Engineer, and unobstructed to allow for the conveyance of storm water. Reserve "A" is to be owned and maintained by the owners of adjacent lots, and is to be used for open space, pedestrian ways, emergency access, drainage, and as a utility easement. Reserve "B" is to be owned and maintained by the owners of Lot 1, and is to be used for open space, drainage, gazebo, fountains, lighting, public sidewalk, and private sanitary sewer.

Friends University, a Kansas non-profit Corporation

Randall C. Doerksen, Vice President

State of Kansas)
Sedgwick County) SS

The foregoing instrument acknowledged before me, this _____ day of _____, 2003, by Randall C. Doerksen, Vice President, on behalf of the Corporation.

Notary Public

Mildred E. Franz

My appointment expires _____

This plat of "FRIENDS UNIVERSITY 3RD ADDITION", Wichita, Sedgwick County, Kansas, has been submitted to and approved by the Wichita-Sedgwick County Metropolitan Area Planning Commission, Wichita, Kansas. Dated this _____ day of _____, 2003.

Wichita-Sedgwick County Metropolitan Area Planning Commission

Chairman

Bernard A. Hentzen

Secretary

Dale Miller

This plat approved and all dedications shown hereon accepted by the City Council of the City of Wichita, Kansas, this _____ day of _____, 2003.

At the direction of the City Council

City Manager

Chris Cherches

City Clerk

Pat Graves

Reviewed in accordance with K.S.A. 58-2005 on this _____ day of _____, 2003.

Deputy County Surveyor

Sedgwick County Kansas

Tricia L. Robello, LS #1246

Entered on transfer record this _____ day of _____, 2003.

County Clerk

Don Brace

State of Kansas)
Sedgwick County) SS

This is to certify that this plat has been filed for record in the office of the Register of Deeds, this _____ day of _____, 2003, at _____ o'clock _____ M., and is duly recorded.

Register of Deeds

Bill Meek

Deputy

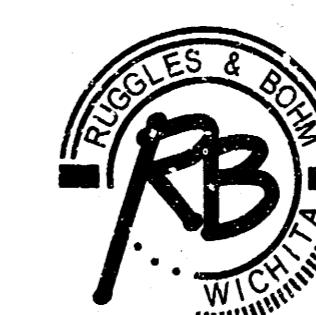
Linda Kizzire

We, the undersigned, holders of a mortgage on the above described property, do hereby consent to this plat of "FRIENDS UNIVERSITY 3RD ADDITION", Wichita, Sedgwick County, Kansas, this _____ day of _____, 2003.

Bank of America

We, the undersigned, holders of a mortgage on the above described property, do hereby consent to this plat of "FRIENDS UNIVERSITY 3RD ADDITION", Wichita, Sedgwick County, Kansas, this _____ day of _____, 2003.

Commerce Bank, N.A.



Ruggles & Bohm, P.A.
Engineering, Surveying, Land Planning
924 North Main (316) 264-8008
Wichita, Kansas 67203 (316) 264-4621 fax
www.rbkansas.com E-mail: info@rbkansas.com

DWG FILE: 2299P-W.C.
PROJECT NO. 02W02299P
FEBRUARY 27, 2003