

**GENERAL NOTES**

1. THE CONTRACTOR SHALL BE RESPONSIBLE FOR PRESERVING PROPERTY IRONS. THE CONTRACTOR WILL BE REQUIRED TO RE-ESTABLISH ANY PROPERTY IRONS WHICH ARE DAMAGED OR DESTROYED BY HIS CONSTRUCTION OPERATIONS. SUCH IRONS SHALL BE RE-ESTABLISHED BY A LICENSED LAND SURVEYOR IN ACCORDANCE WITH STATE LAWS.
2. EXISTING UTILITIES AND THEIR LOCATIONS AS SHOWN ON THE PLANS REPRESENT THE BEST INFORMATION OBTAINABLE FOR DESIGN. LOCATION INFORMATION HAS BEEN OBTAINED FROM THE VARIOUS UTILITY COMPANIES AND IS EITHER FROM COMPANY RECORD DRAWINGS OR COMPANY PROVIDED FIELD LOCATIONS. THE PLAN LOCATIONS SHOWN ARE NOT GUARANTEED. ADDITIONAL EXISTING UTILITIES MAY ALSO BE ENCOUNTERED.
3. CONTRACTOR WILL BE REQUIRED TO PROVIDE A MINIMUM ADVANCE NOTICE OF FORTY-EIGHT (48) HOURS TO UTILITY COMPANIES PRIOR TO STARTING ANY EXCAVATION AS FOLLOWS:

KANSAS ONE-CALL 1-800-344-7233  
or 687-2470 (LOCAL WICHITA)

THE CONTRACTOR MUST NOTIFY THE FOLLOWING IN CASE OF AN EMERGENCY:

SOUTHWESTERN BELL TELEPHONE COMPANY 1-571-2115  
CABLEVISION 262-4270 OR 263-2061  
K. P. & L. GAS SERVICE COMPANY 263-7511  
KANSAS GAS & ELECTRIC 264-1141  
CITY OF BEL AIRE 744-2451  
ARKLA GAS COMPANY 942-8350 OR 263-8161

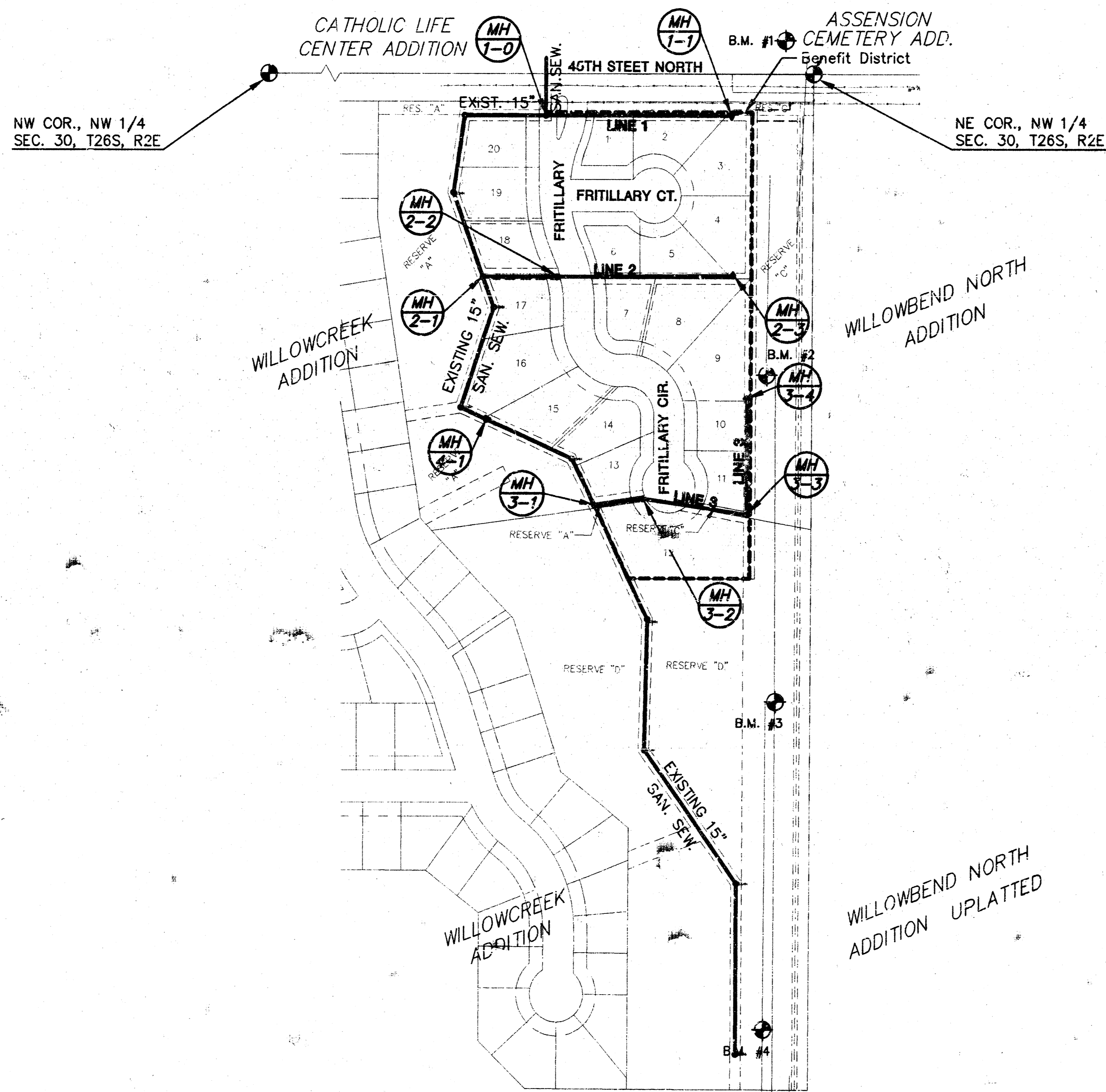
4. RUBBLE FROM THE REMOVAL OF MISCELLANEOUS STRUCTURES AND EXCESS EXCAVATION WHICH IS TO BE WASTED SHALL BE DISPOSED OF ON SITES TO BE PROVIDED BY THE CONTRACTOR. THESE SITES SHALL BE APPROVED BY THE ENGINEER AS TO SUITABILITY, APPEARANCE AND SITE LOCATION. LOCATIONS THAT, IN THE OPINION OF THE ENGINEER WILL LEAVE AN UNSIGHTLY APPEARANCE WILL NOT BE APPROVED. ALL DISPOSAL SITES MUST BE APPROVED BY THE KANSAS DEPARTMENT OF HEALTH AND ENVIRONMENT. MATERIAL EITHER STOCKPILED OR DISPOSED OF IN A FLOOD PLAIN WOULD REQUIRE A KANSAS STATE BOARD OF AGRICULTURE PERMIT. ANY MATERIAL DUMPED IN WATERS OF THE UNITED STATES OR WETLANDS IS SUBJECT TO U.S. CORPS OF ENGINEERS PERMITTING REGULATIONS. ANY MATERIAL BURIED OR STOCKPILED BEYOND APPROVED CONSTRUCTION LIMITS WOULD REQUIRE ADDITIONAL ARCHEOLOGICAL INVESTIGATIONS UNLESS BURIED IN A PREVIOUSLY APPROVED BORROW LOCATIONS.
5. COST OF EXCAVATION, HAULING, AND DUMPING OF EXCESS EXCAVATION SHALL BE SUBSIDIARY TO THE PROJECT.
6. A PORTION OF EXCESS EXCAVATED MATERIAL SHALL BE MOUNDING AROUND MANHOLES WHICH EXTEND MORE THAN ONE (1) FOOT ABOVE THE EXISTING GROUND. SUCH MOUNDS SHALL BE CONSTRUCTED WITH A SIX (6) FOOT DIAMETER FLAT TOP WITH 4 TO 1 SIDE SLOPES DOWN TO THE ORIGINAL GROUND. THE ELEVATION OF THE FLAT TOP OF THE MOUND SHALL BE 0.4 FOOT BELOW THE TOP OF THE MANHOLE.
7. ALL STUBS AND PLUGGED PIPES SHALL BE LOCATED WITH GREEN PLASTIC TAPE IN THE SAME MANNER AS RISERS.
8. PRIOR TO LAYING SEWER LINES USING EXISTING STUBS IN EXISTING MANHOLES, THE CONTRACTOR SHALL EXPOSE AND VERIFY THE ELEVATION, GRADE AND ALIGNMENT OF EXISTING STUBS AND NOTIFY THE ENGINEER OF ANY DEVIATION FROM THE PLAN. WHERE CONNECTION TO AN EXISTING MANHOLE THAT DOES NOT HAVE AN EXISTING STUB OR THE STUB IS UNUSABLE DUE TO ELEVATION GRADE OR ALIGNMENT, THE CONTRACTOR SHALL RESHAPE THE EXISTING MANHOLE INVERT TO PROVIDE SMOOTH FLOW. THE COST OF RESHAPING EXISTING MANHOLE INVERTS IS INCIDENTAL TO THE PROJECT.
9. TREES AND SHRUBS IN PUBLIC RIGHT-OF-WAY WHICH ARE IN DIRECT CONFLICT WITH PROPOSED NEW CONSTRUCTION SHALL BE REMOVED BY THE CONTRACTOR WITH THE ENGINEER'S APPROVAL. TREES AND SHRUBS WHICH ARE NOT IN DIRECT CONFLICT WITH PROPOSED NEW CONSTRUCTION SHALL BE SAVED AND PROTECTED FROM DAMAGE. COST OF REMOVAL SHALL BE PAID AS SITE PREPARATION AND RESTORATION.
10. ALL DISTURBED AREAS WILL BE SEEDED IN CONFORMANCE WITH CITY OF BEL AIRE SPECIFICATIONS, EXCEPT RYE GRASS MAY BE SUBSTITUTED FOR FESCUE. SEEDING COST IS CONSIDERED TO BE INCLUDED IN THE BID OF CLEARING AND RESTORATION.

**BENCHMARKS**

- B.M. #1 RR SPIKE IN S.W. FACE OF TRIPLE POLE, EAST POLE N. SIDE OF 45TH ST. N.  
ELEV. = 1387.40
- B.M. #2 RR SPIKE IN W. FACE 1ST H POLE S. OF 45TH ST. N.  
ELEV. = 1385.63
- B.M. #3 RR SPIKE IN W. FACE 2ND H POLE S. OF 45TH ST. N.  
ELEV. = 1378.46
- B.M. #4 RR SPIKE IN W. FACE 3RD H POLE S. OF 45TH ST. N.  
ELEV. = 1373.12

**SANITARY SEWER PLANS  
GLENWOOD ADDITION**

AN ADDITION TO  
CITY OF BEL AIRE  
SEDGWICK COUNTY, KANSAS  
JANUARY 1998



AS BUILT: 11/25/96

REVISED: 11/25/98

**INDEX TO DRAWINGS**

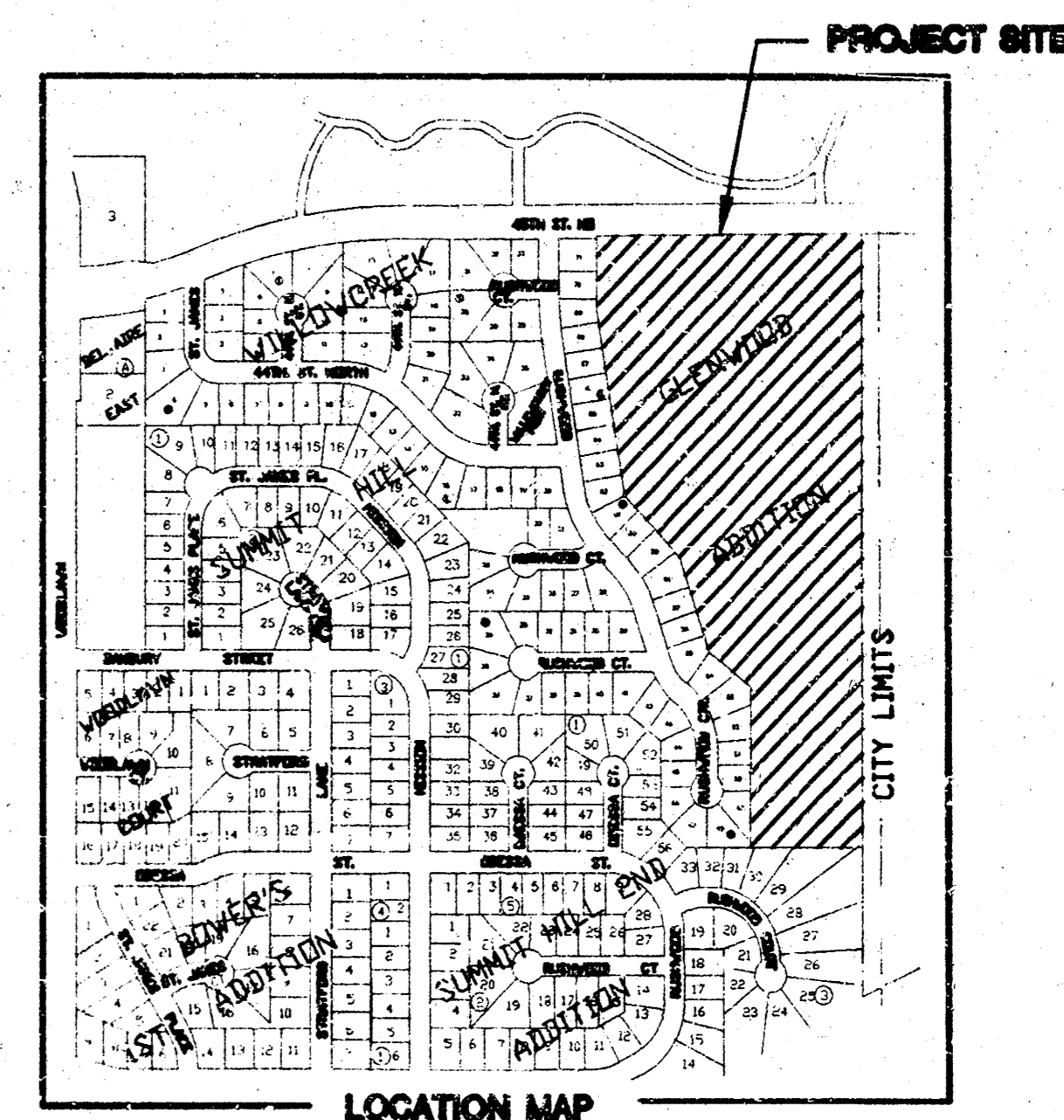
SHEET NO.	DESCRIPTION
1	TITLE SHEET
2-3	MANHOLE & RISER DETAILS
4	LINE 1 PLAN & PROFILE
5	LINE 2 PLAN & PROFILE AND MANHOLE 4-1
6	LINE 3 PLAN & PROFILE
7	FINAL PLAT

APPROVED AS NOTED  
BY CITY ENGINEER OF WICHITA

Sanitary Sewers \_\_\_\_\_  
Storm Sewers \_\_\_\_\_  
Driveway Approaches \_\_\_\_\_  
Water Mains \_\_\_\_\_  
Paving \_\_\_\_\_

**NOTE TO CONTRACTOR**

INSPECTION AND TESTING FOR THIS PROJECT IS TO BE PROVIDED BY A LICENSED CONSULTING ENGINEERING FIRM UNDER CONTRACT WITH OWNER/DEVELOPER. SAID INSPECTION TO BE IN ACCORDANCE WITH THE CITY OF WICHITA STANDARD CONSTRUCTION ENGINEERING PRACTICES AND CERTIFIED BY A LICENSED PROFESSIONAL ENGINEER. NO WORK SHALL BE PERFORMED IN DEDICATED EASEMENTS OR THE PUBLIC RIGHT-OF-WAY BY THE CONTRACTOR WITHOUT SUCH INSPECTION NOR SHALL ANY WORK BE COMMENCED IN DEDICATED EASEMENTS OR PUBLIC RIGHT-OF-WAY WITHOUT WRITTEN AUTHORIZATION BY THE CITY ENGINEER.

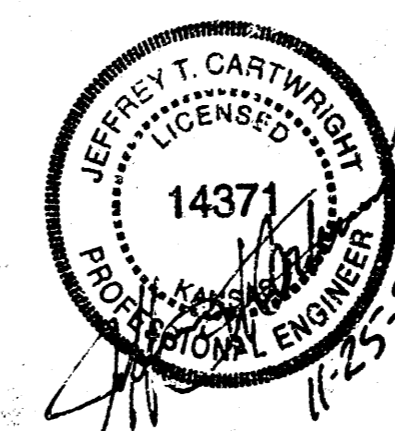


Booked  
1-26-99  
P-60  
R7L

**CITY OF WICHITA PRIVATE  
PROJECT NO. 782P/S(607861)**

SCALE: 1" = 150'

LEGEND  
• MH



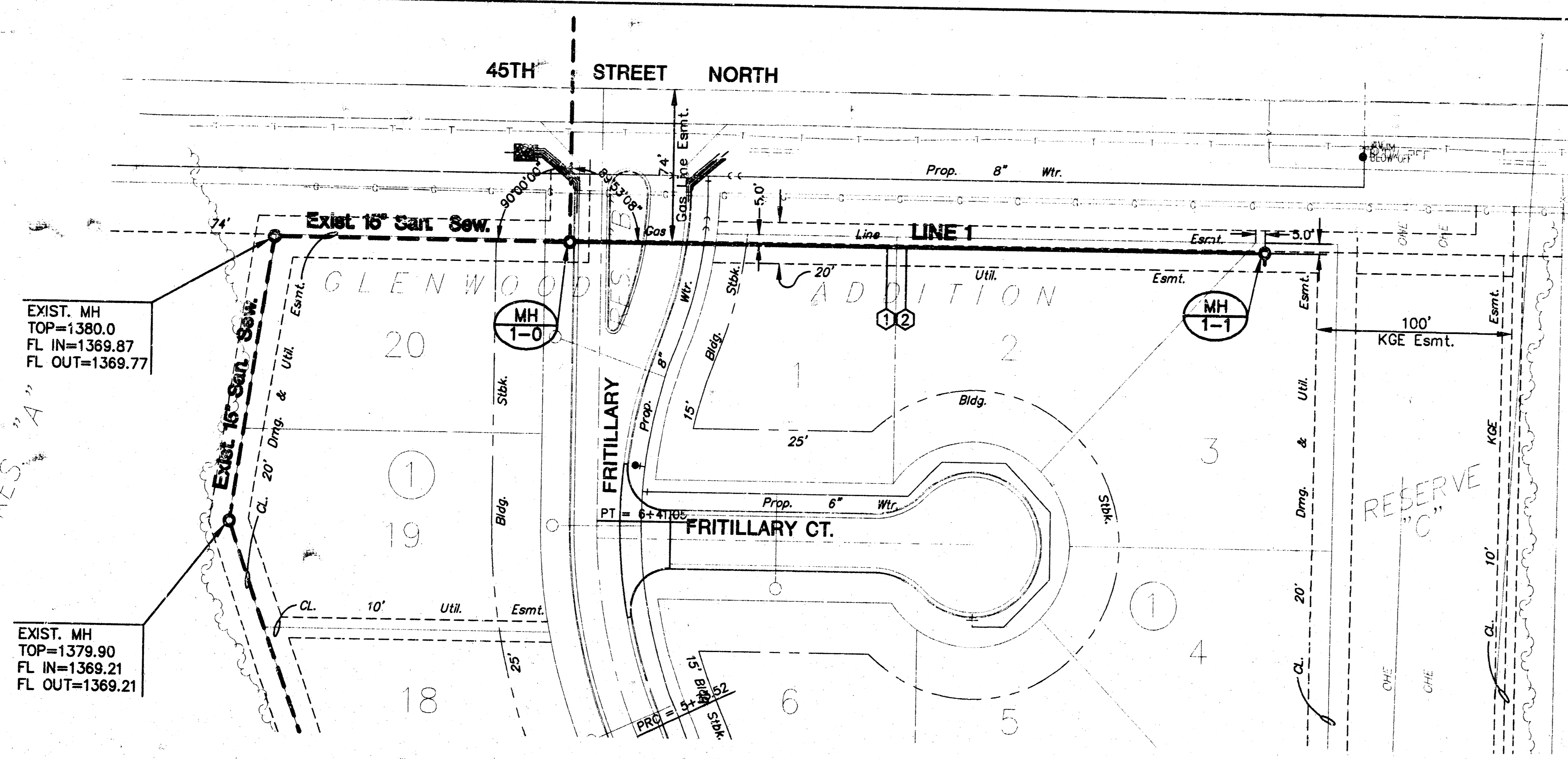
<b>GLENWOOD ADDITION</b> PROJECT NAME		
<b>SANITARY SEWER PLANS</b> SHEET TITLE		
<b>GJA</b> DESIGN BY:	<b>BDL</b> DRAWN BY:	<b>GJA</b> CHECKED BY:
<b>JANUARY 1998</b> DATE	<b>97085_BT</b> 1705 NO.	<b>1 / 7</b> SHEET / CF

MID-KANSAS ENGINEERING CONSULTANTS, INC.  
411 N. WEBB ROAD  
WICHITA, KS. 67206  
316-684-9600

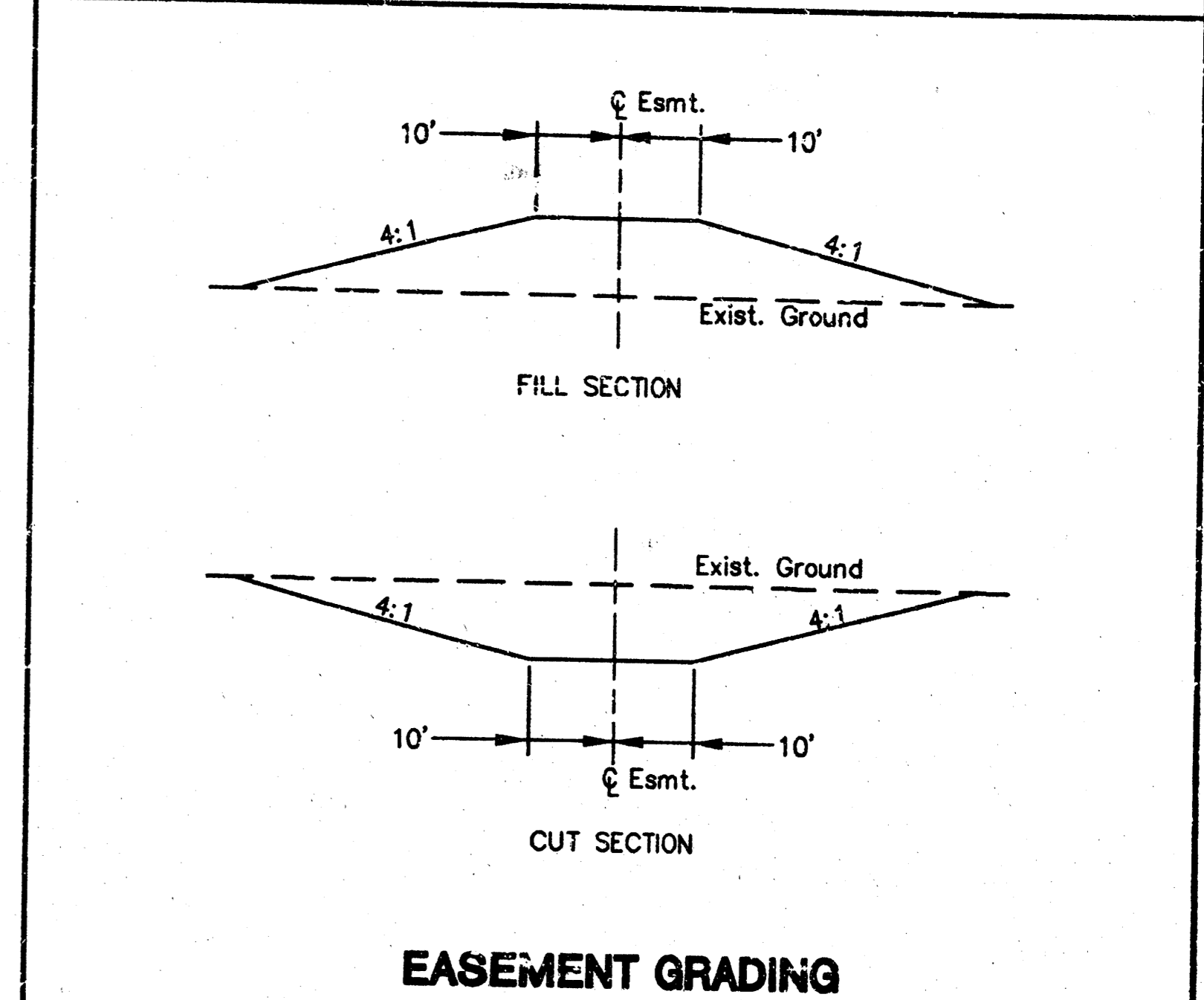




**GLENWOOD ADDITION  
SANITARY SEWER PLANS  
LINE 1  
782PPS(607861)**

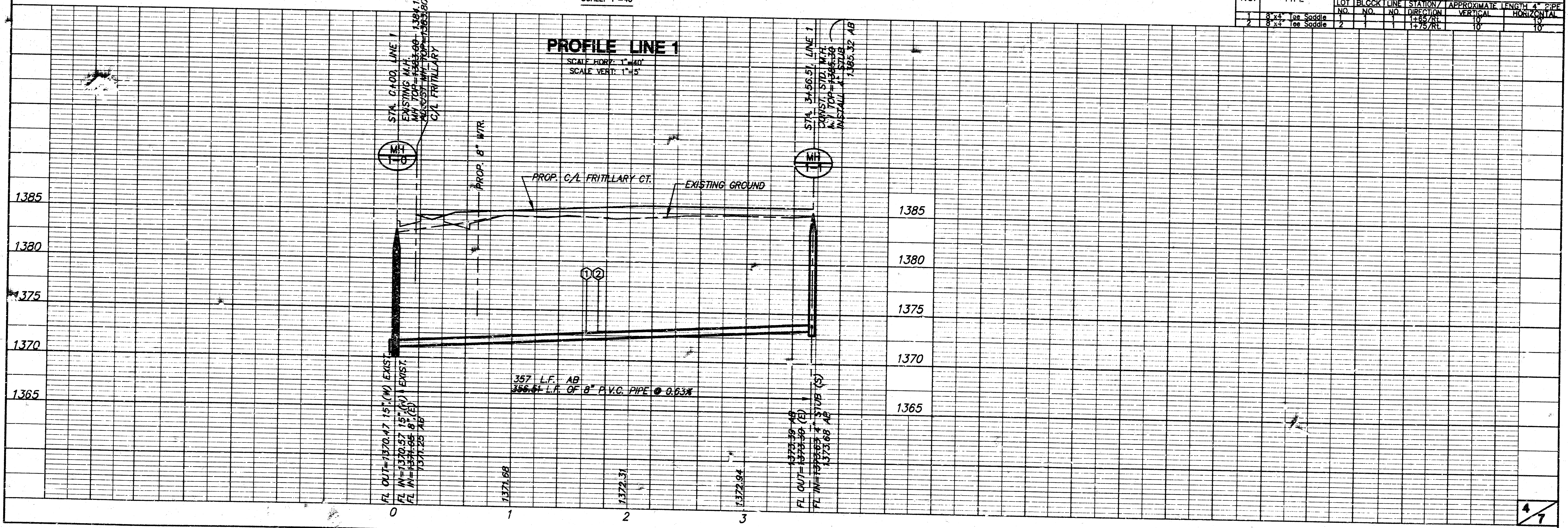


**PLAN LINE 1**  
SCALE: 1"=40'



SEWER SERVICE TABLE FOR GLENWOOD ADDITION

NO.	TYPE	LOCATION			FOR INFORMATION ONLY	
		LOT NO.	BLOCK NO.	STATION / DIRECTION	APPROXIMATE LENGTH 4" PIPE	VERTICAL
1	8"x4" Tee Saddle	1	1	1+55.00	10	10
2	8"x4" Tee Saddle	2	1	1+75.00	10	10



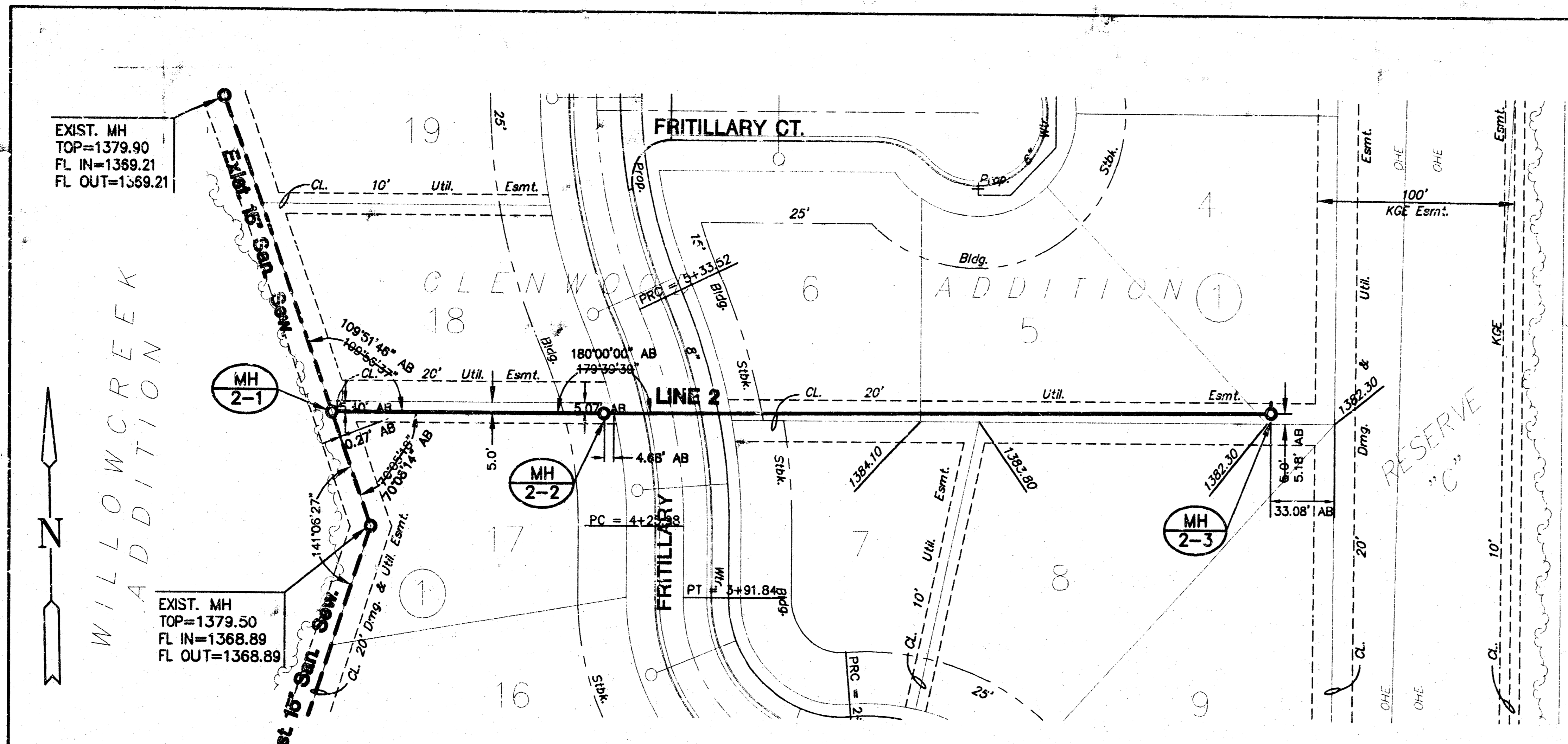
**PROFILE LINE 1**  
SCALE HORIZ: 1"=40'  
SCALE VERT: 1"=5'

AS BUILT: 11/25/98

97085\_B1

1: BELLAIRE 97085 SANITARY.DWG Mod Nov 25 12:42:36 1998

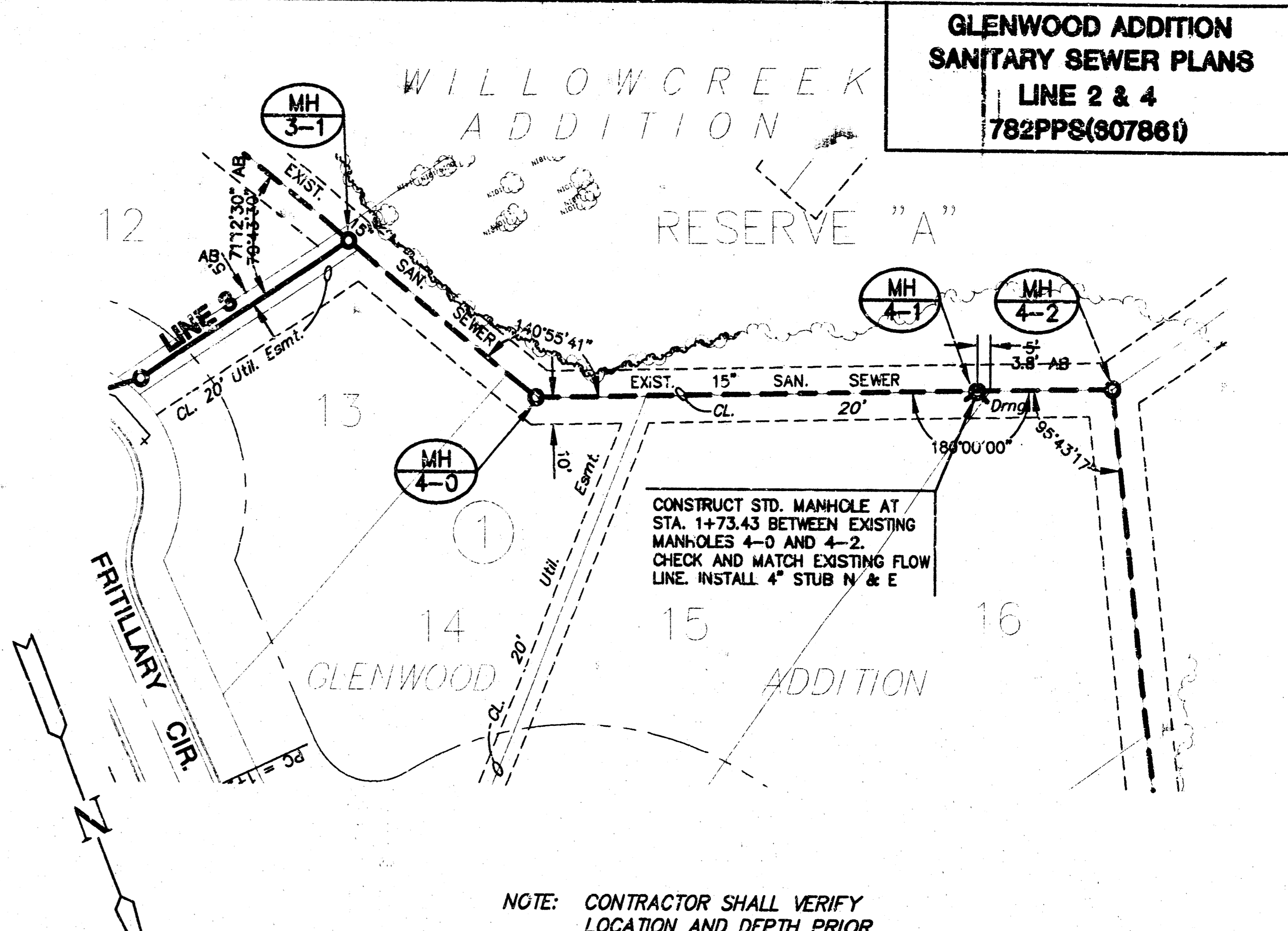
**GLENWOOD ADDITION  
SANITARY SEWER PLANS  
LINE 2 & 4  
782PPS(90786)**



NOTE: CONTRACTOR SHALL VERIFY LOCATION AND DEPTH PRIOR TO CONSTRUCTION.

**PLAN LINE 2**  
SCALE: 1"=40'

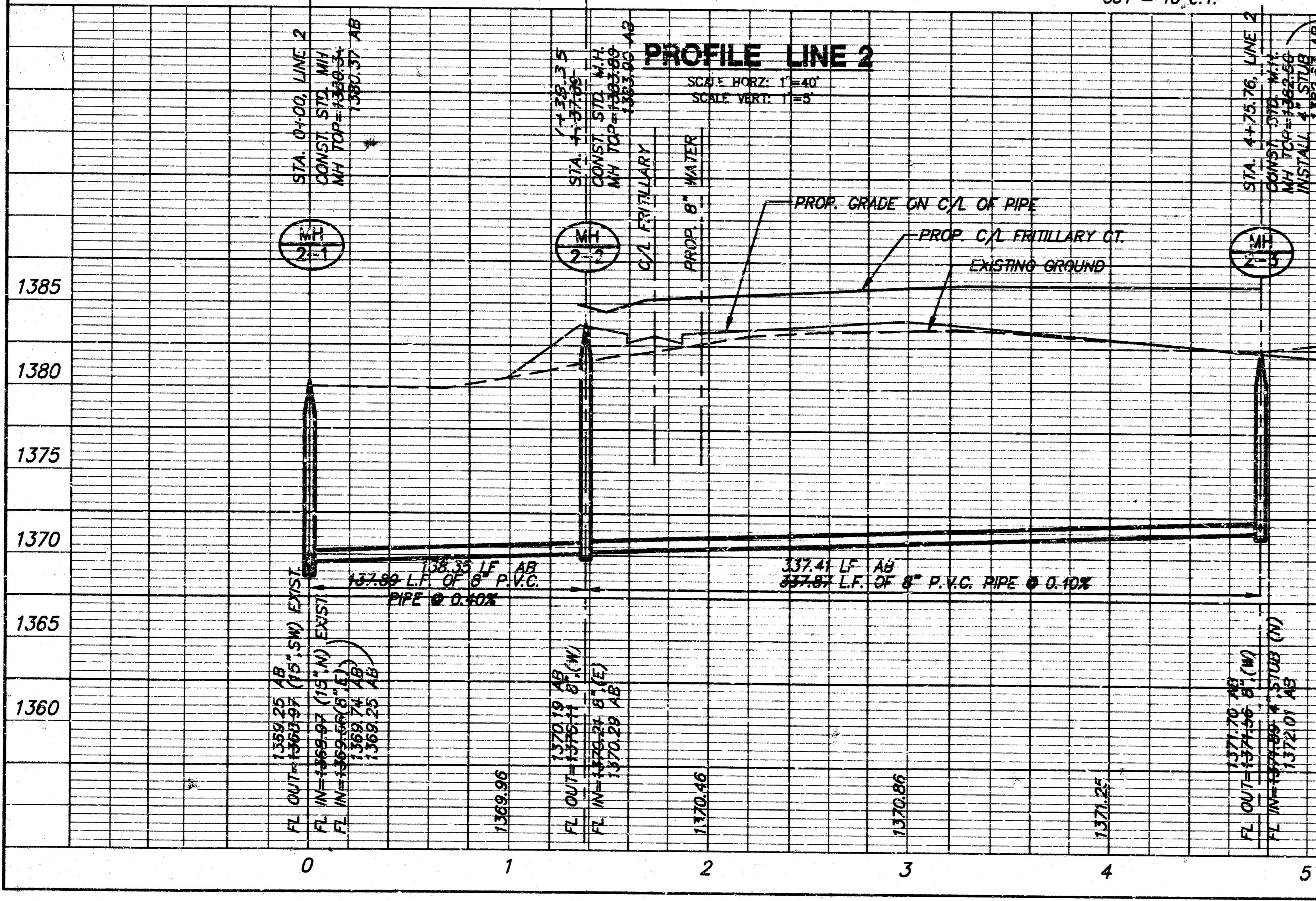
NOTE: EASEMENT GRADING REQUIRED FROM MH 2-2 TO MH 2-3. FOR INFORMATION ONLY.  
FILL = 54 C.Y.  
CUT = 10 C.Y.



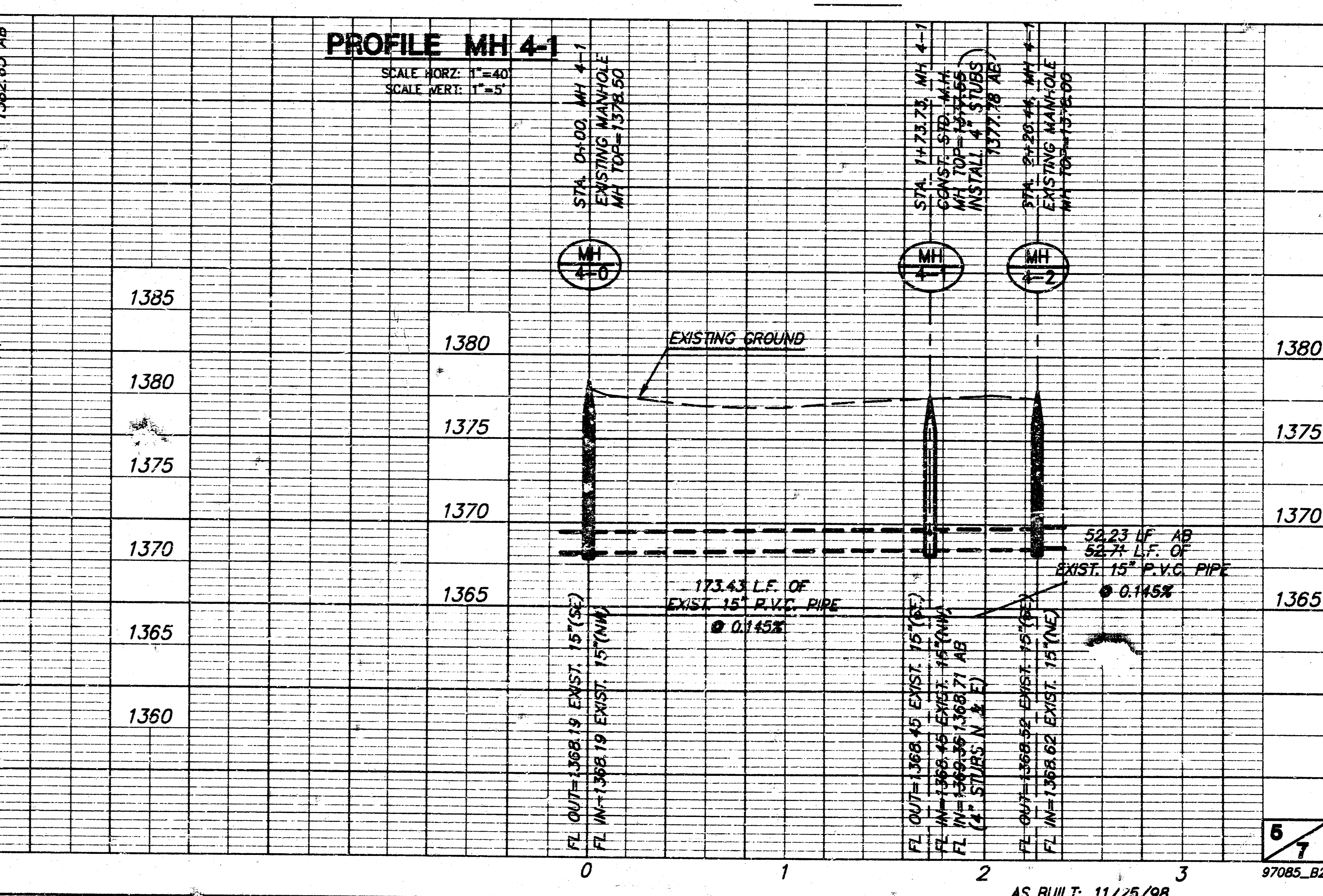
NOTE: CONTRACTOR SHALL VERIFY LOCATION AND DEPTH PRIOR TO CONSTRUCTION.

**PLAN LINE 4 (EXIST.)**  
SCALE: 1"=40'

SCALE: 1"=40'



**PROFILE LINE 2**  
SCALE HORZ: 1"=40'  
SCALE VERT: 1"=5'



**PROFILE MH 4-1**  
SCALE HORZ: 1"=40'  
SCALE VERT: 1"=5'



