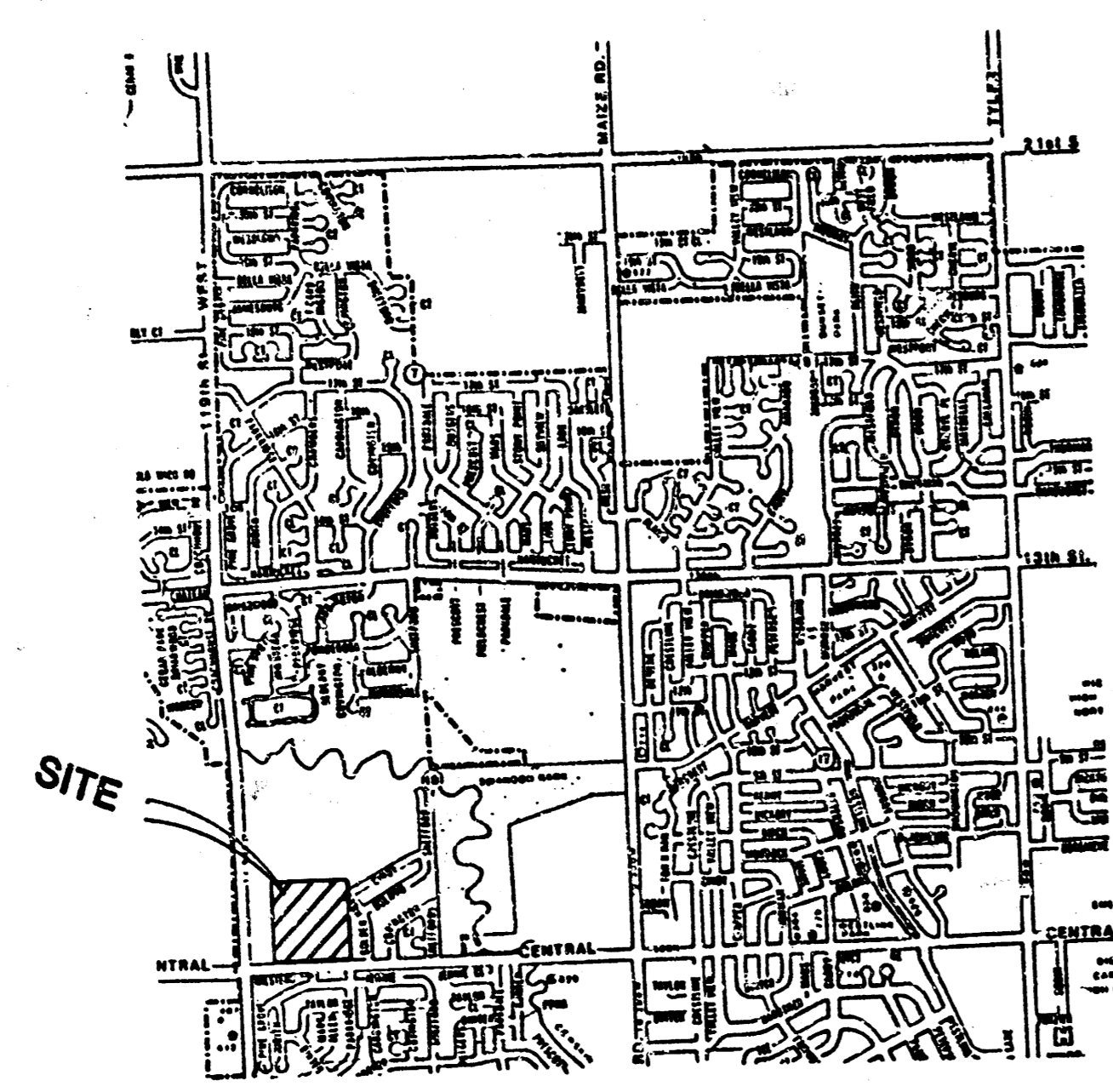
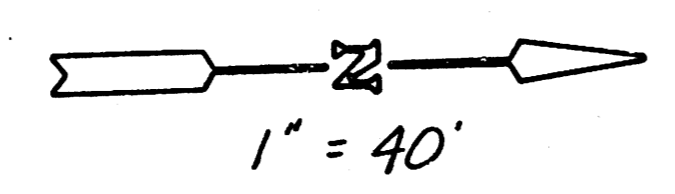


**GENERAL NOTES**

1. The Contractor shall be responsible for preserving property irons. The Contractor will be required to re-establish any property irons which are damaged or destroyed by his construction operations. Such irons shall be re-established by a licensed land surveyor in accordance with state laws.
2. Manholes to be constructed on this project are to be Standard Type "A" Shallow.
3. Traffic will not be affected by this project.
4. Construction of this project shall comply with the latest revision of the City of Wichita PROCEDURE FOR CONSTRUCTION OF PUBLIC WORKS PROJECTS BY PRIVATE CONTRACT.

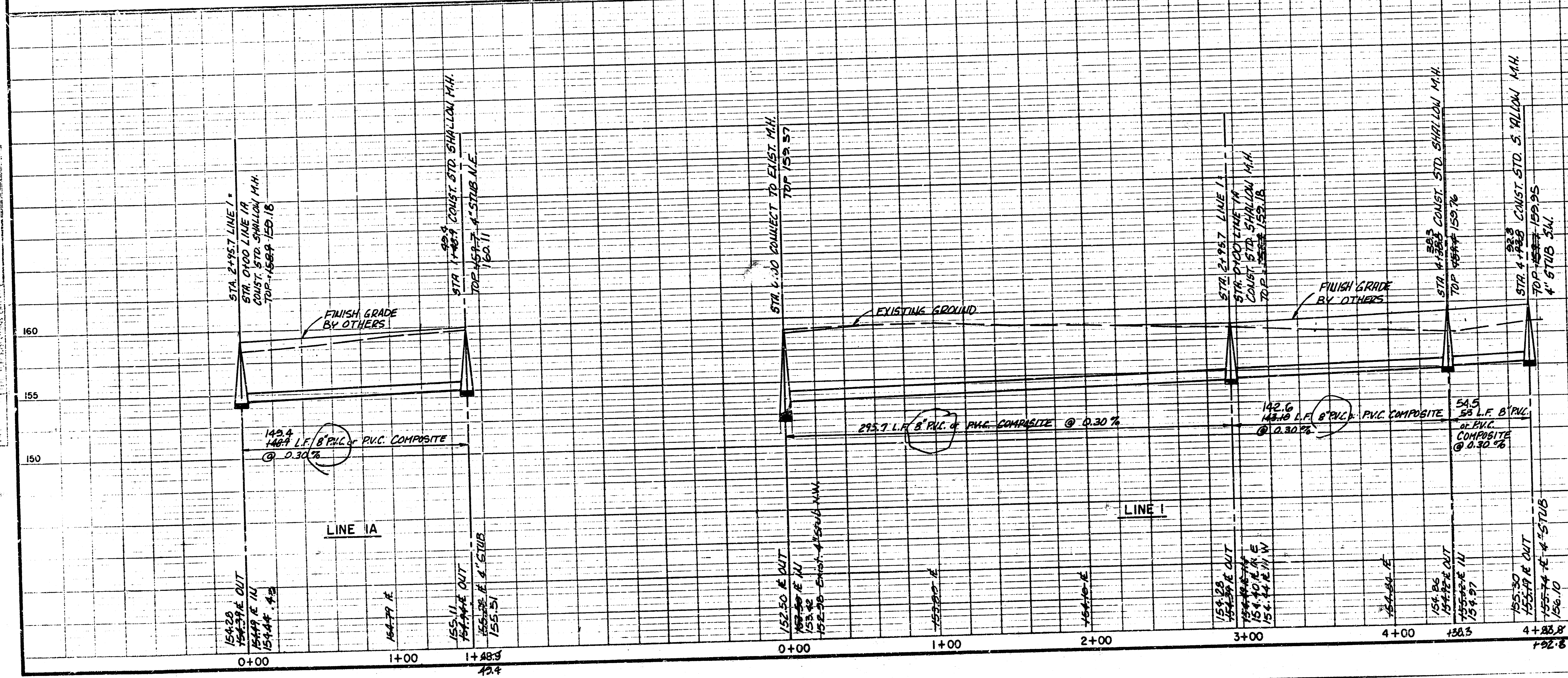
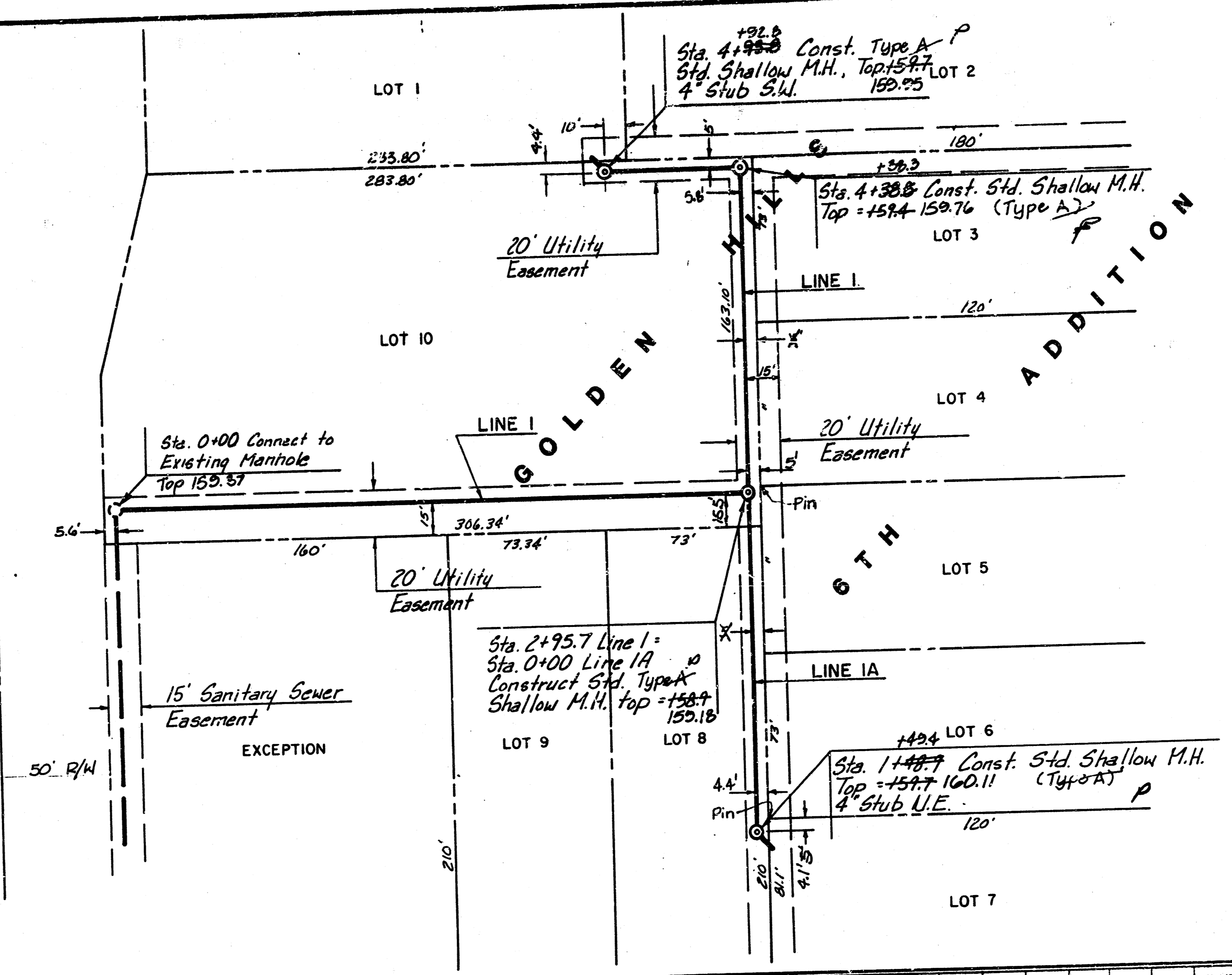


LOCATION MAP



PROFILE SCALE  
1" = 40' H.  
1" = 5' V.

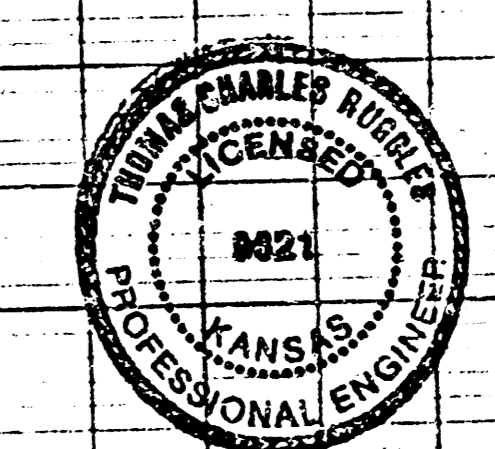
B.M.  
"D" - S. End of S.E. Curb  
Return at Milstead & Delano  
Elev. = 160.51



APPROVED AS NOTED  
By CITY ENGINEER OF WICHITA

Sanitary Sewers	<i>[Signature]</i>
Storm Sewers	
Driveway Approaches	
Water Mains	
Paving	

NOTE TO CONTRACTOR  
INSPECTION AND TESTING FOR THIS PROJECT IS TO BE PROVIDED BY A LICENSED CONSULTING ENGINEERING FIRM UNDER CONTRACT WITH THE OWNER/DEVELOPER. SAID INSPECTION TO BE IN ACCORDANCE WITH THE CITY OF WICHITA STANDARD CONSTRUCTION ENGINEERING PRACTICES AND CERTIFIED BY A LICENSED PROFESSIONAL ENGINEER. NO WORK SHALL BE PERFORMED IN DEDICATED EASEMENTS OR PUBLIC-RIGHT-OF-WAY BY THE CONTRACTOR WITHOUT SUCH INSPECTION NOR SHALL ANY WORK BE COMMENCED WITHOUT WRITTEN AUTHORIZATION BY THE CITY ENGINEER.



Revised as built 12-21-89 TCR

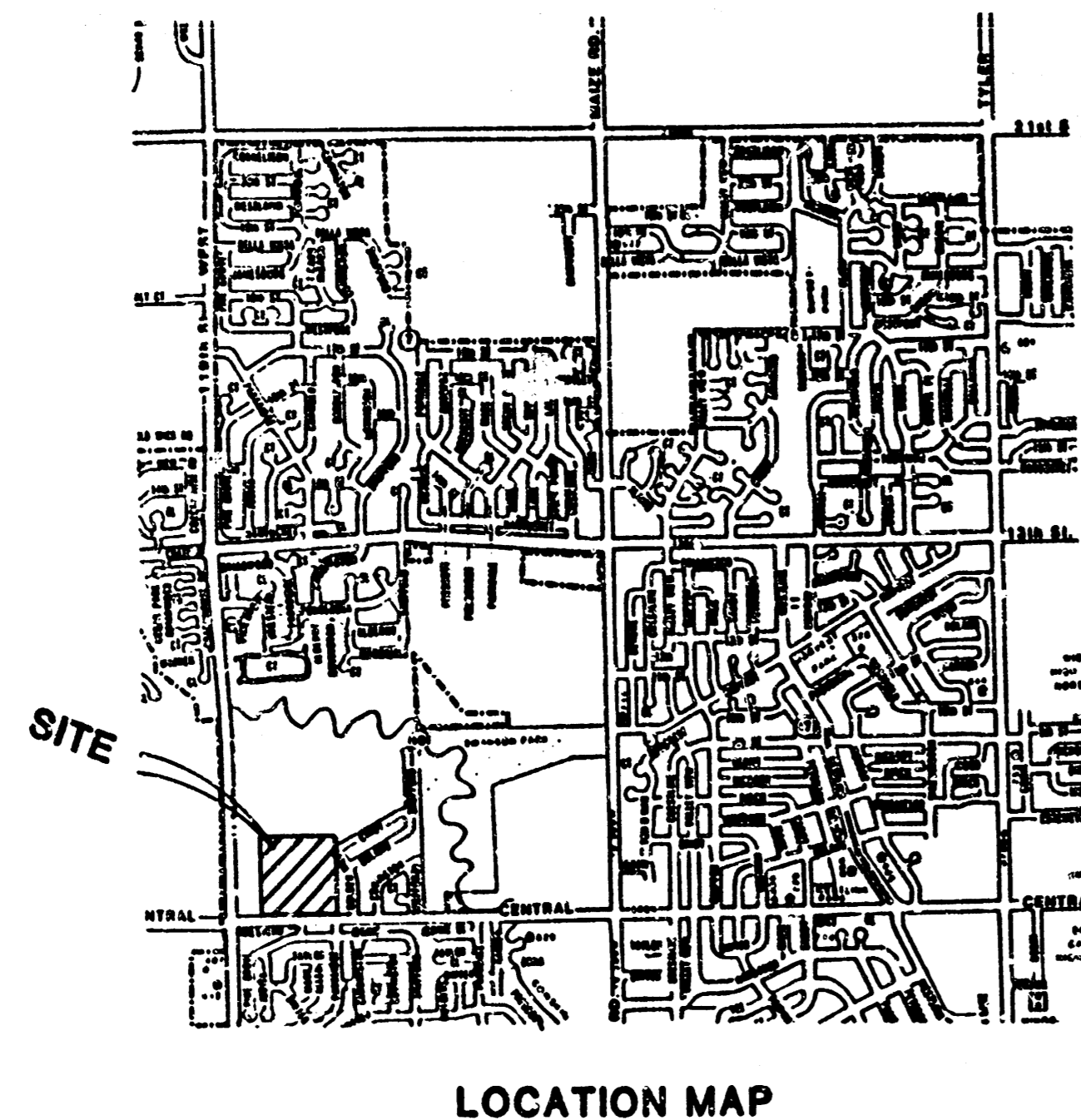
THIS IS THE  
**PRIVATE SANITARY SEWER TO SERVE  
GOLDEN HILLS 6TH ADDITION  
WICHITA, KANSAS**

**BAUGHMAN COMPANY, P.A.**  
SURVEYING & ENGINEERING  
316260-7211 • 3162115 • WICHITA, KANSAS 67211

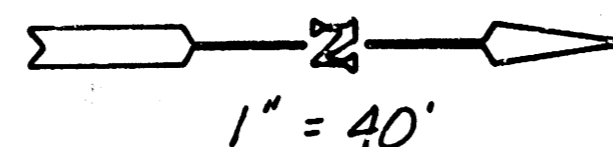
Design:	TCR	Drawn:	DSN	Approved:		Date:	9-14-89	Scale:	NOTED
INDEX CODE 225 PPS 607853									

87-09-C968

Booked  
2-90  
RPL

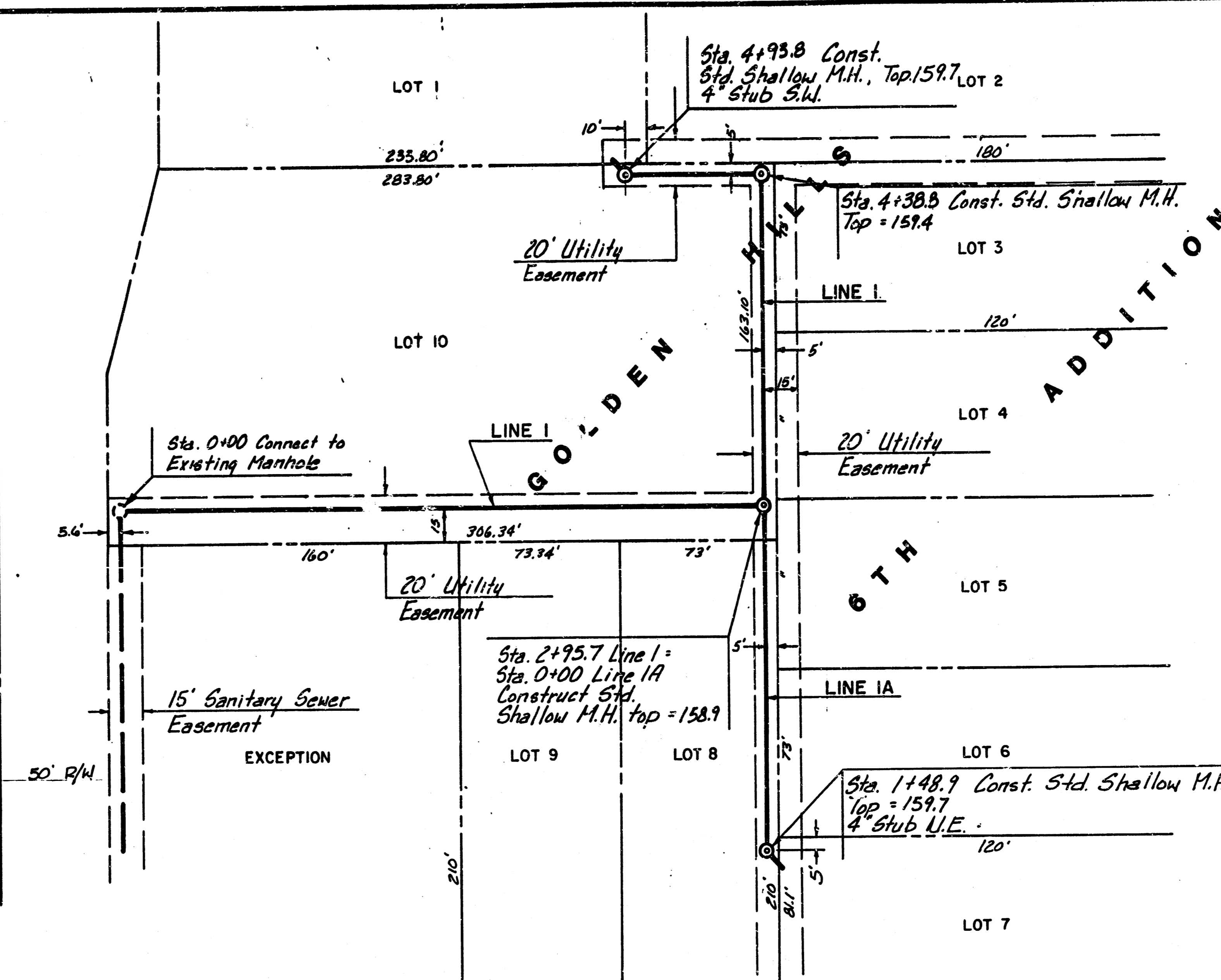


LOCATION MAP



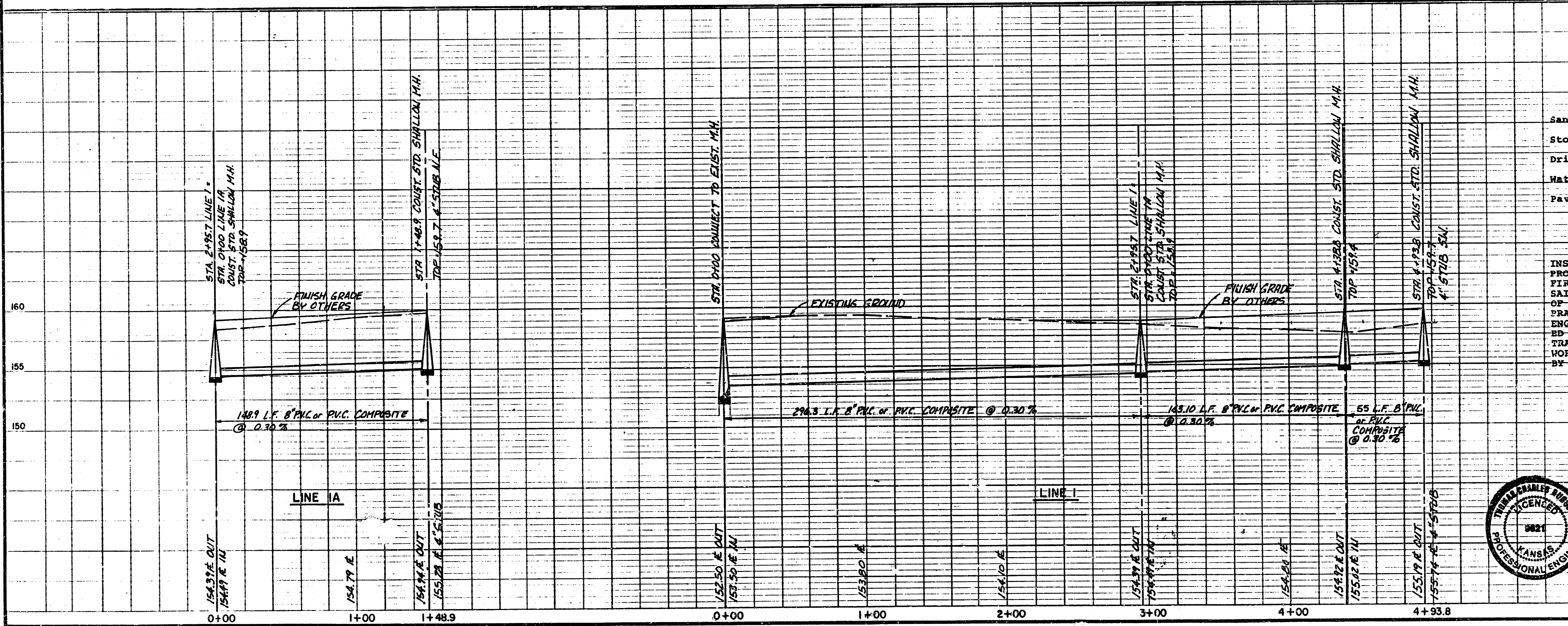
PROFILE SCALE  
1" = 40' H.  
1" = 5' V.

B.M.  
"A" S. End of S.E. Curb  
Return at Milstead & Delano  
Elev. = 160.51



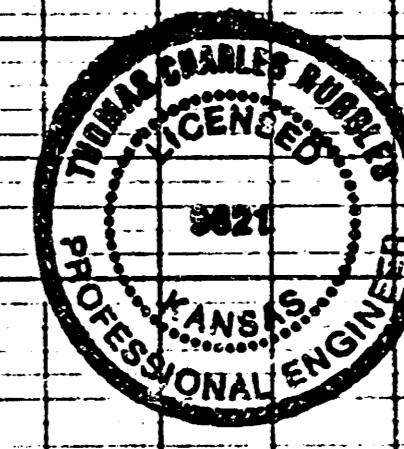
GENERAL NOTES

1. The Contractor shall be responsible for preserving property irons. The Contractor will be required to re-establish any property irons which are damaged or destroyed by his construction operations. Such irons shall be re-established by a licensed land surveyor in accordance with state laws.
2. Manholes to be constructed on this project are to be Standard Type "A" Shallow.
3. Traffic will not be affected by this project.
4. Construction of this project shall comply with the latest revision of the City of Wichita PROCEDURE FOR CONSTRUCTION OF PUBLIC WORKS PROJECTS BY PRIVATE CONTRACT.



APPROVED AS NOTED  
By CITY ENGINEER OF WICHITA  
Sanitary Sewer *R. J. [Signature]* 7/17/89  
Storm Sewers  
Driveway Approaches  
Water Mains  
Paving

NOTE TO CONTRACTOR  
INSPECTION AND TESTING FOR THIS PROJECT IS TO BE PROVIDED BY A LICENSED CONSULTING ENGINEERING FIRM UNDER CONTRACT WITH THE OWNER/DEVELOPER. SAID INSPECTION TO BE IN ACCORDANCE WITH THE CITY OF WICHITA STANDARD CONSTRUCTION-ENGINEERING PRACTICES AND CERTIFIED BY A LICENSED PROFESSIONAL ENGINEER. NO WORK SHALL BE PERFORMED IN DEDICATED BASEMENTS OR PUBLIC RIGHT-OF-WAY BY THE CONTRACTOR WITHOUT SUCH INSPECTION NOR SHALL ANY WORK BE COMMENCED WITHOUT WRITTEN AUTHORIZATION BY THE CITY ENGINEER.



PRIVATE SANITARY SEWER TO SERVE  
GOLDEN HILLS 8TH ADDITION  
WICHITA, KANSAS

BAUGHMAN COMPANY, P.A.  
SURVEYING & ENGINEERING  
310222-7271 • 315 ELLIS • WICHITA, KANSAS 67211

Index Code 225 PPS 607853

10 2 3 3 2/2

FILMED FROM THE BEST AVAILABLE COPY