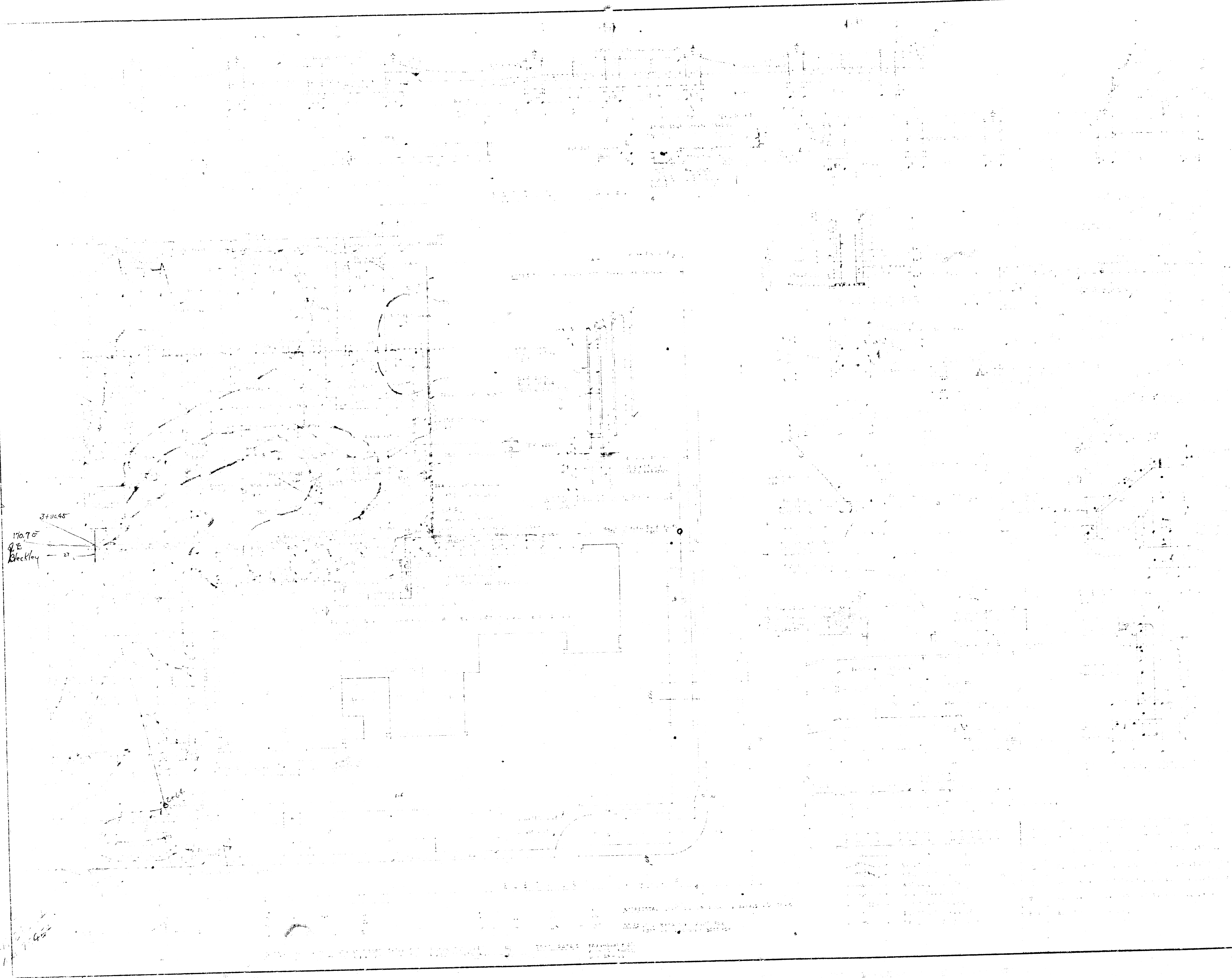
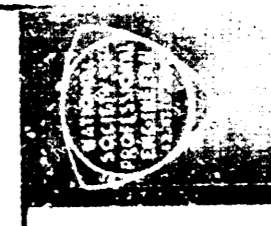
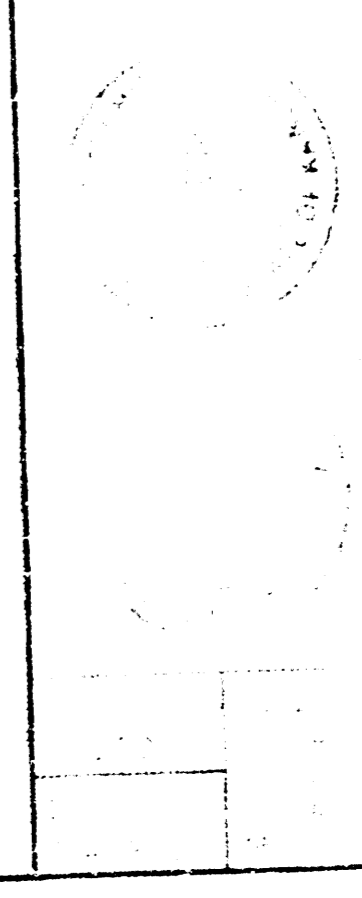
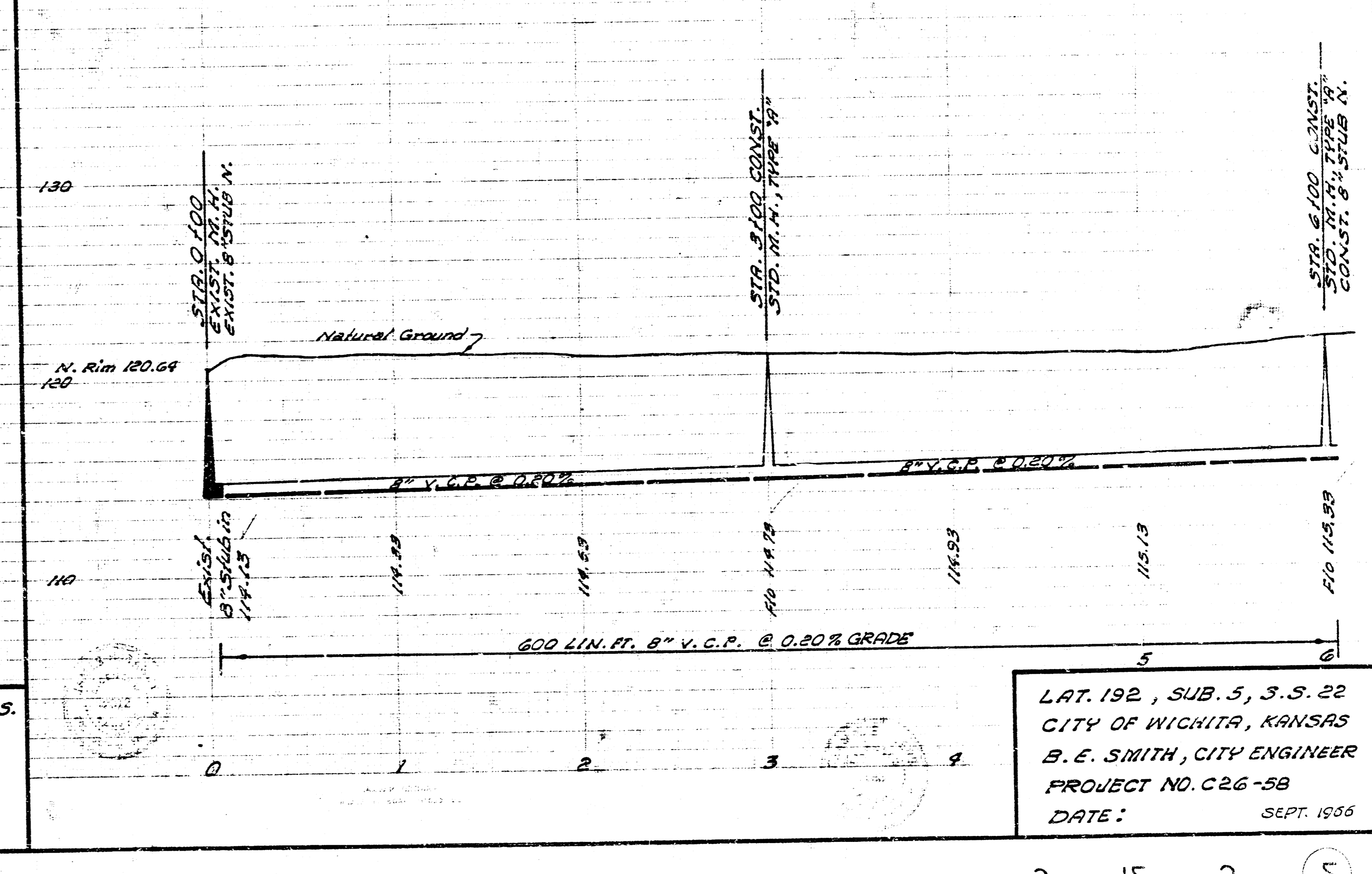
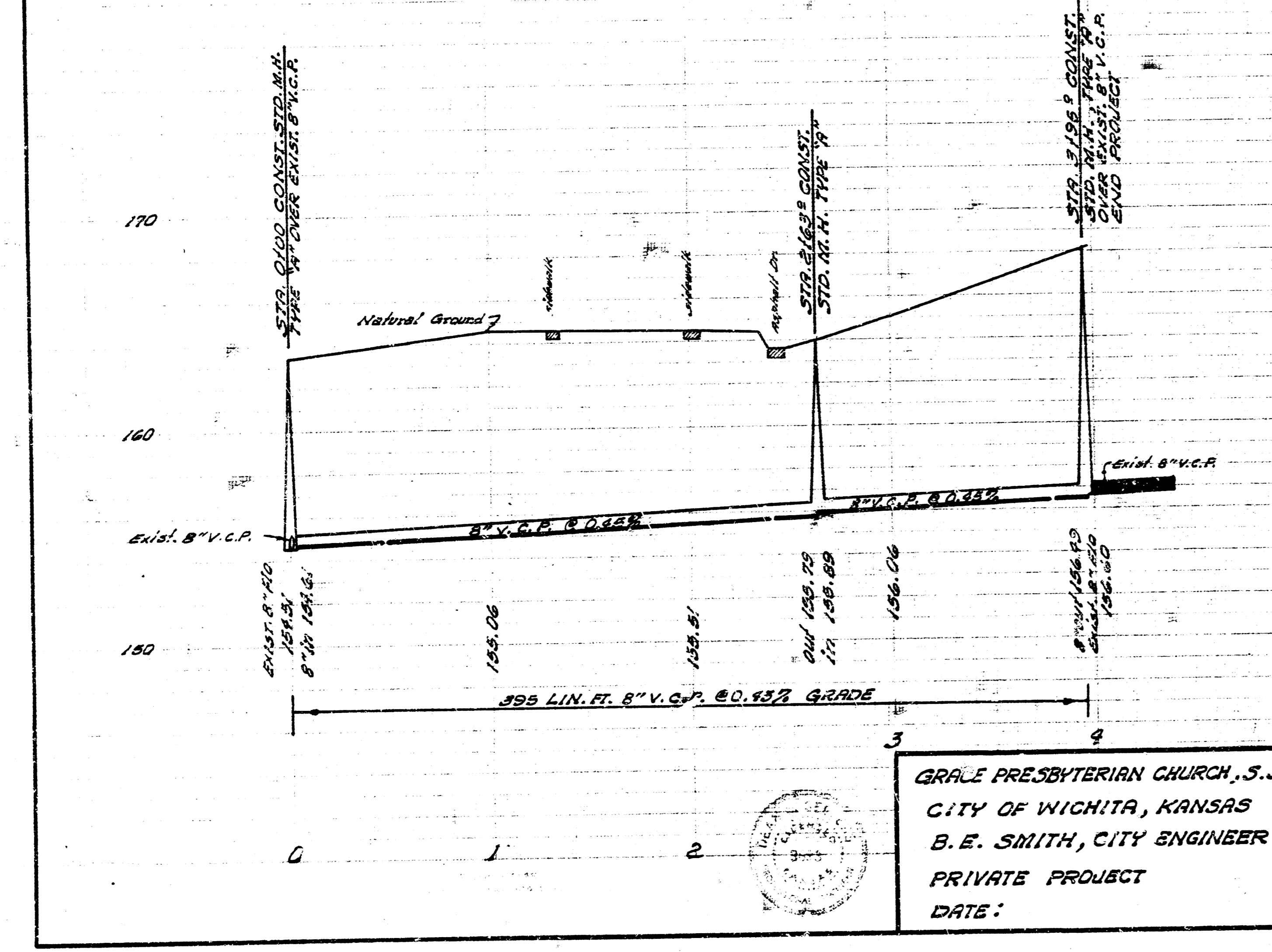
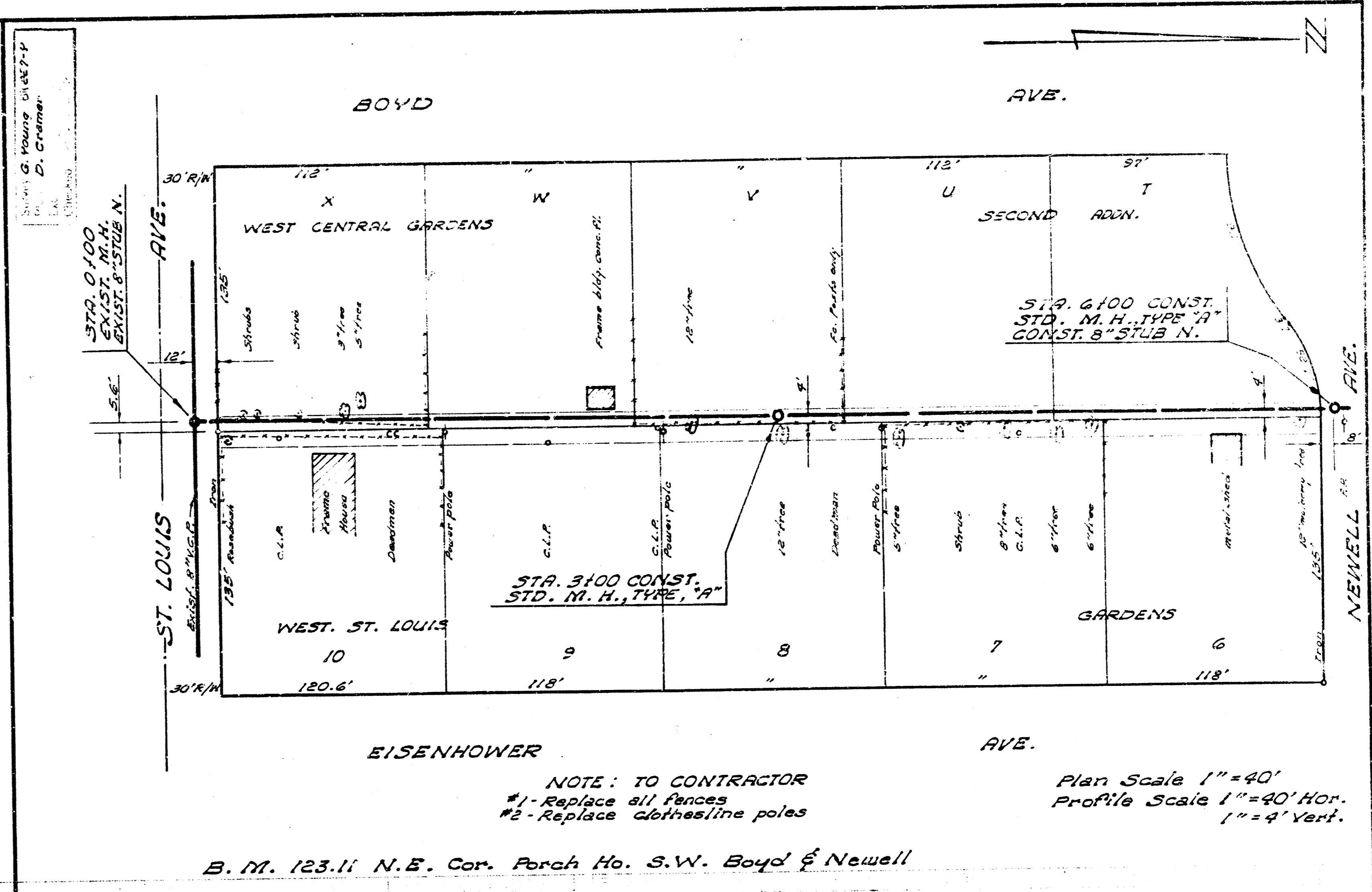
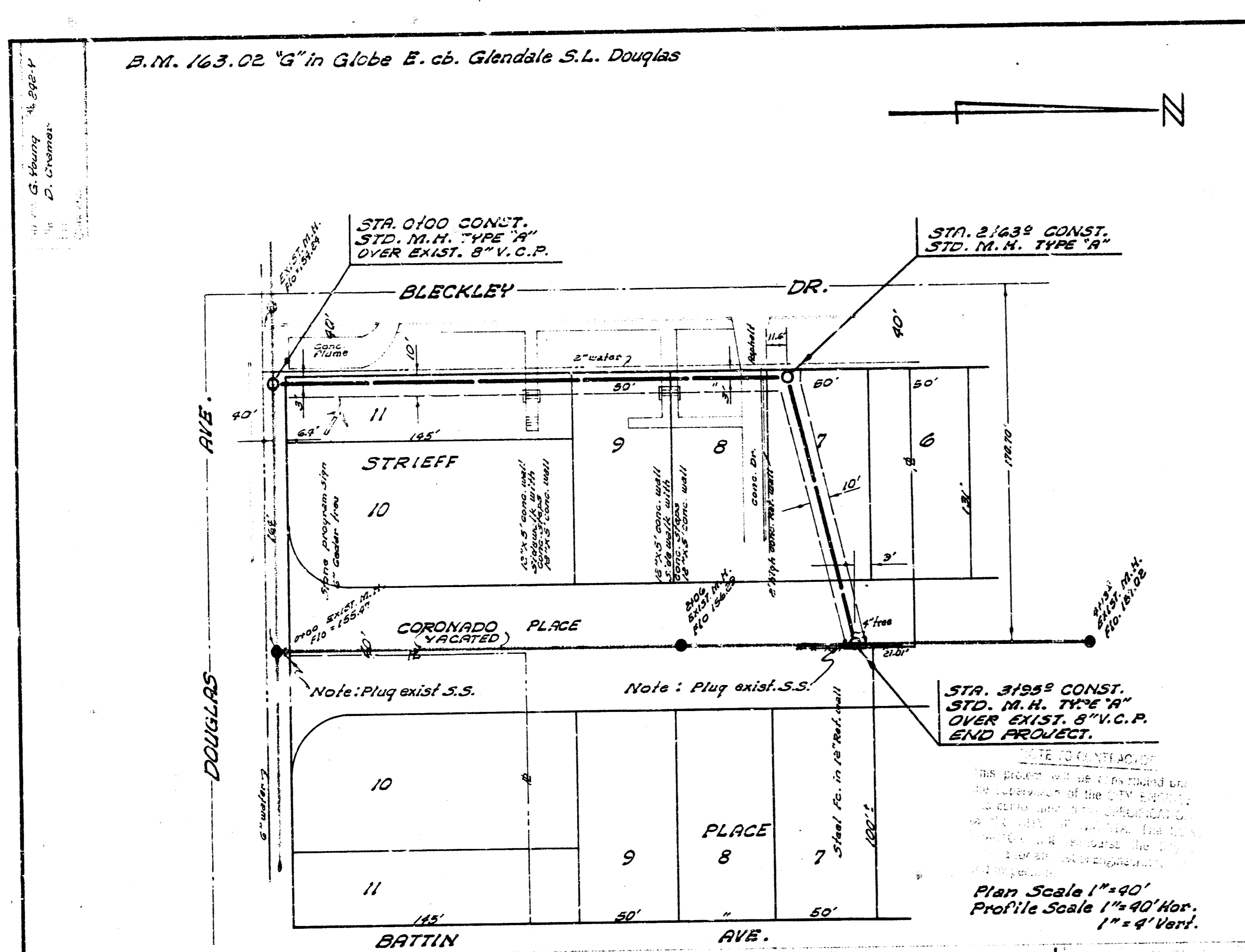


BM 168.59 Stand 500 Douglas & Oliver  
172.71 x on w. side. Distance 10.00 N. Douglas



  
CARMICHAEL WHEATCROFT & ASSOCIATES  
ARCHITECTS • ENGINEERS





GRACE PRESBYTERIAN CHURCH, S.S.  
 CITY OF WICHITA, KANSAS  
 B. E. SMITH, CITY ENGINEER  
 PRIVATE PROJECT  
 DATE:

LAT. 192, SUB. 5, 3.S. 22  
 CITY OF WICHITA, KANSAS  
 B. E. SMITH, CITY ENGINEER  
 PROJECT NO. C26-58  
 DATE: SEPT. 1958