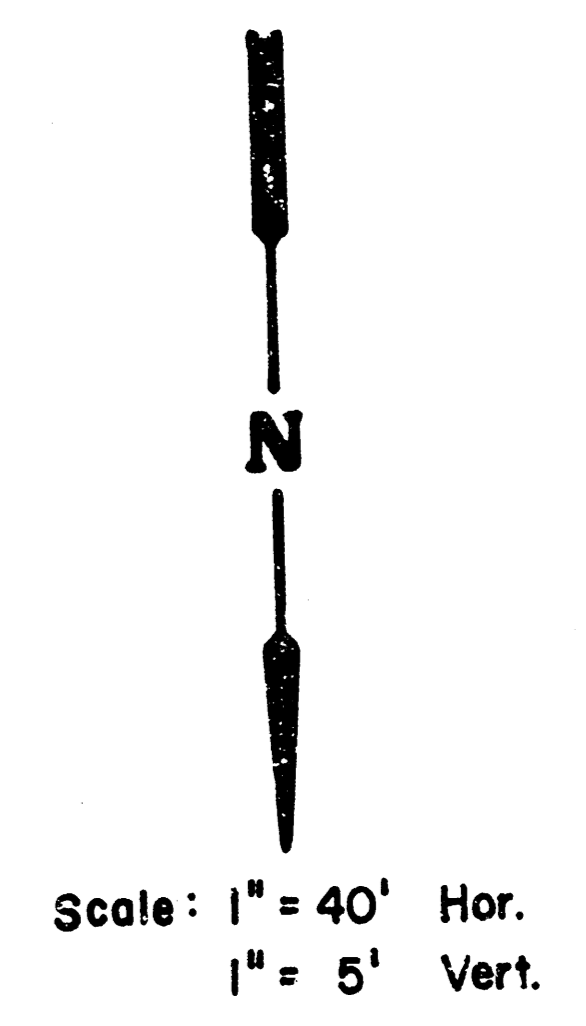
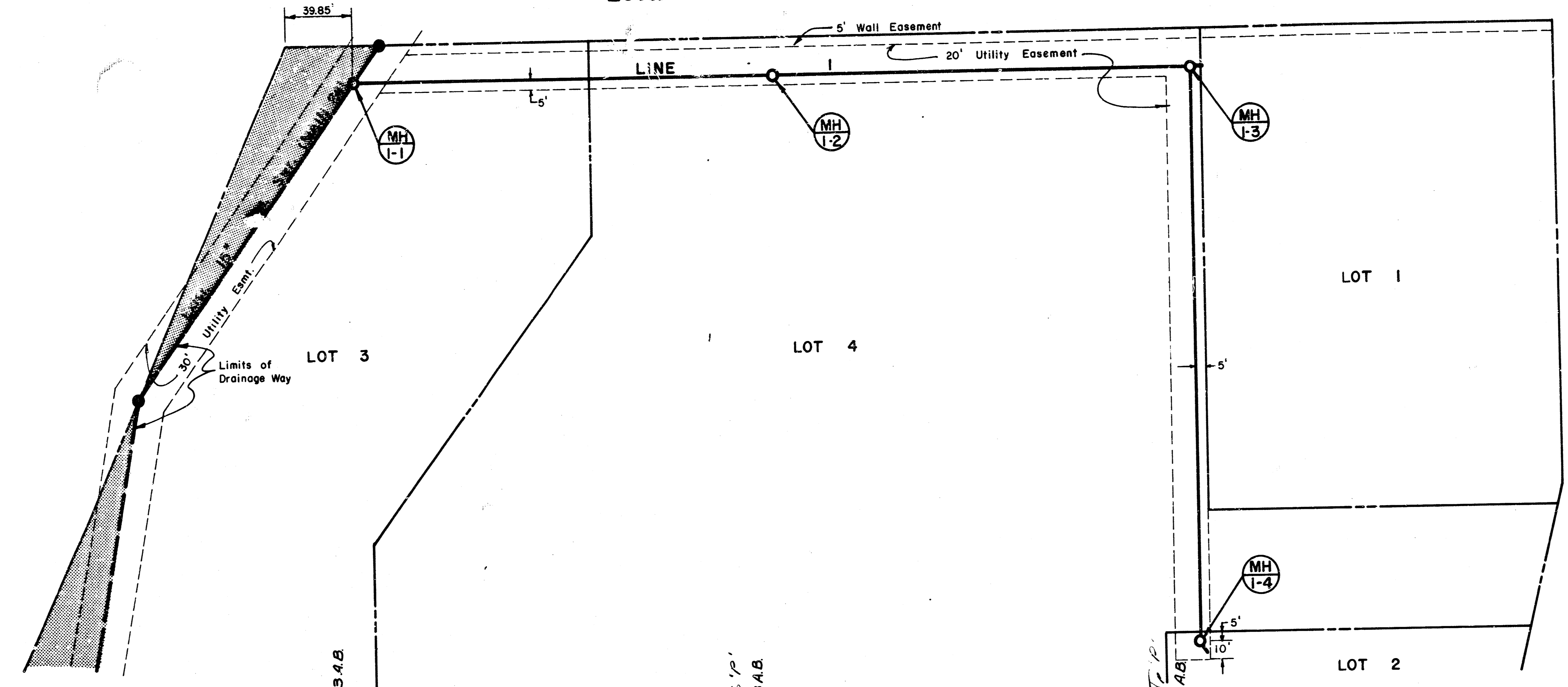
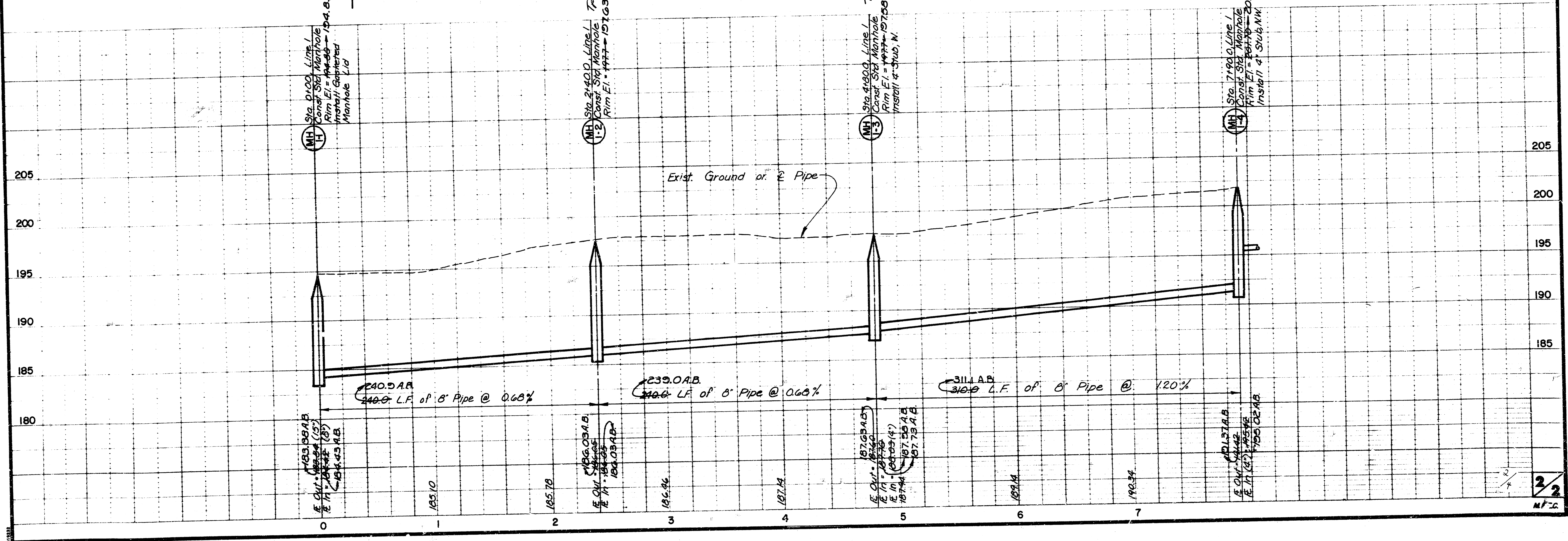


20TH STREET NORTH (PROPOSED STREET)



AS BUILT - JUNE, 1985



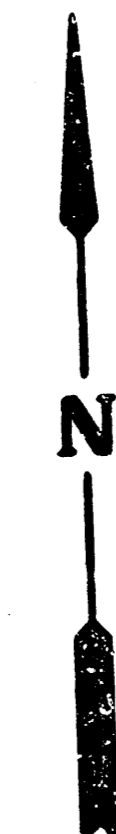
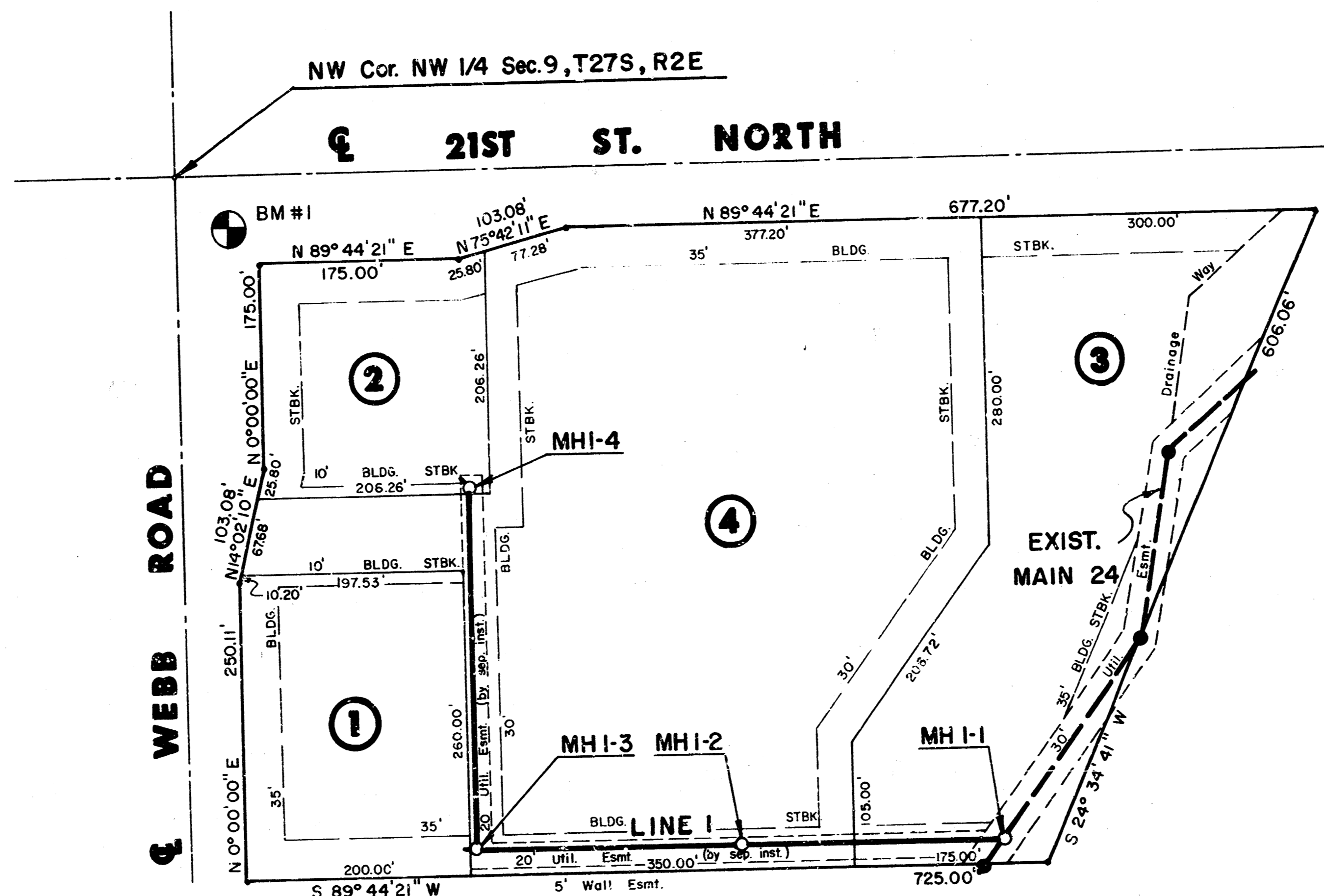
SANITARY SEWER PLANS FOR HANLEY COMMERCIAL PRIVATE PROJECT NO. 213 PPS

CITY OF WICHITA, KANSAS
MICHAEL E. LINDEBAK, CITY ENGINEER
MAY, 1989

GENERAL NOTES

1. ALL CONSTRUCTION AND MATERIALS TO COMPLY WITH CITY OF WICHITA SPECIFICATIONS AND STANDARDS.
2. THE CONTRACTOR SHALL BE RESPONSIBLE FOR PRESERVING PROPERTY IRONS. THE CONTRACTOR SHALL BE REQUIRED TO RE-ESTABLISH ANY PROPERTY IRONS WHICH ARE DAMAGED OR DESTROYED BY HIS CONSTRUCTION OPERATIONS. SUCH IRONS SHALL BE RE-ESTABLISHED BY A LICENSED LAND SURVEYOR IN ACCORDANCE WITH STATE LAWS.
3. THE CONTRACTOR WILL BE REQUIRED TO PROVIDE A MINIMUM ADVANCE NOTICE OF TWENTY-FOUR (24) HOURS TO UTILITY AND PIPELINE COMPANIES PRIOR TO STARTING ANY EXCAVATION AS FOLLOWS:

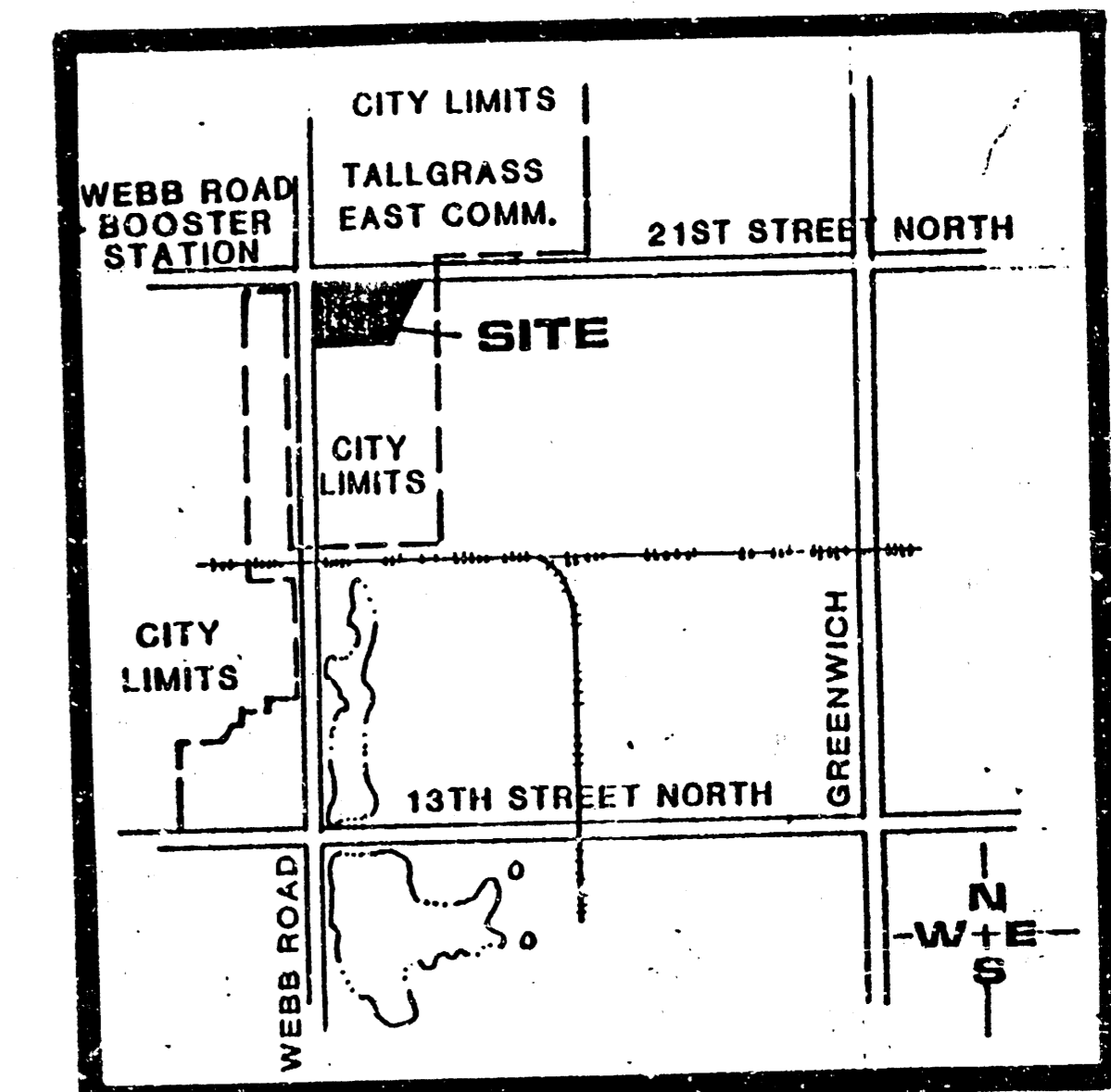
KANSAS ONE-CALL	1-800-344-7233
THE CONTRACTOR MUST NOTIFY THE FOLLOWING IN CASE OF AN EMERGENCY:	
ARLA GAS COMPANY	942-8350 or 263-8161
SOUTHWESTERN BELL TELEPHONE COMPANY	1-316-1-571-2611
CABLEVISION	262-4270 or 262-2061
KPL GAS SERVICE COMPANY	263-7511
KANSAS GAS & ELECTRIC	264-1141
CITY OF WICHITA WATER DEPARTMENT	268-4908
CITY OF WICHITA SEWER MAINTENANCE	268-4071
4. EXISTING UTILITIES AND THEIR LOCATIONS, AS SHOWN ON THE PLANS, REPRESENT THE BEST INFORMATION OBTAINABLE FOR DESIGN. LOCATION INFORMATION HAS BEEN OBTAINED FROM THE VARIOUS UTILITY COMPANIES AND IS EITHER FROM COMPANY RECORD DRAWINGS OR COMPANY PROVIDED FIELD LOCATIONS. THE PLAN LOCATIONS SHOWN ARE NOT GUARANTEED. ADDITIONAL EXISTING UTILITIES MAY ALSO BE ENCOUNTERED.
5. ALL STUBS AND PLUGGED PIPES SHALL BE LOCATED WITH GREEN PLASTIC TAPE IN THE SAME MANNER AS RISERS.
6. COST OF EXCAVATION, HAULING, AND DUMPING OF EXCESS EXCAVATION SHALL BE SUBSIDIARY TO THE PROJECT. POSITIVE DRAINAGE SHALL BE PROVIDED FOR ALL AREAS ON OR NEAR SPOIL AREAS. NATURAL DRAINAGE WAYS SHALL BE MAINTAINED.
7. THE CONTRACTOR SHALL BE RESPONSIBLE FOR MAINTAINING CONTINUOUS FLOW FOR SEWAGE THROUGH CONSTRUCTION. CONTRACTOR'S PROPOSED METHOD FOR MAINTAINING SEWAGE FLOW SHALL BE APPROVED BY THE ENGINEER. COST OF MAINTAINING SEWAGE FLOW THROUGH CONSTRUCTION SHALL BE CONSIDERED SUBSIDIARY TO THE OTHER ITEMS OF WORK.
8. ALL ELEVATIONS SHOWN ARE CITY OF WICHITA DATUM.
CITY DATUM = USGS MSL - 1187.4
9. WHERE SHOWN ON DRAWINGS, GASKETED MANHOLE LIDS SHALL BE INSTALLED WITH REPLACEABLE RUBBER O-RING SELF-SEALING GASKETS. PROVIDE ONE SPARE GASKET FOR EACH MANHOLE FRAME AND COVER INSTALLED. DO NOT INSTALL GASKETS UNTIL AFTER FINAL INSPECTION.
10. THE COST OF CONCRETE CRADLES SHALL BE CONSIDERED SUBSIDIARY TO THE PRICE BID FOR SEWER PIPE INSTALLATION.
11. ALL EXISTING GRASSED AREAS WHICH ARE DISTURBED OR DAMAGED DURING CONSTRUCTION OPERATIONS SHALL BE RESTORED TO ORIGINAL CONDITIONS AND RESEEDED IN LIKE KIND. COSTS SHALL BE CONSIDERED SUBSIDIARY TO OTHER BID ITEMS. APPLICATION RATE FOR THE VARIOUS SEED MIXTURES SHALL BE AS APPROVED BY THE ENGINEER. SEEDING SHALL CONFORM TO APPLICABLE REQUIREMENTS OF STANDARD SPECIFICATIONS.
12. ALL INSIDE SURFACES OF CONCRETE MH 1-1 SHALL BE COATED WITH TWO (2) COATS TNEHC SERIES 66 HI-BUILD EPOXOLINE, DRY THICKNESS OF EIGHT (8) MILS (MIN.).



Scale: 1" = 100'

INDEX TO DRAWINGS

SHEET NO.	DESCRIPTION
1	TITLE SHEET
2	PLAN & PROFILE, LINE 1



LOCATION MAP
NO SCALE

BENCHMARKS

BM #1 Webb Road and 21st Street North
City of Wichita B.M. Disc,
44' South and 48' East of
Centerline of Both.
Elev = 205.238

PROFESSIONAL SEAL AND SIGNATURE OF THE ENGINEER
MICHAEL E. LINDEBAK
CITY ENGINEER
CITY OF WICHITA, KANSAS

APPROVED AS NOTED
BY CITY ENGINEER OF WICHITA

DATE: MAY 5/22/89



HANLEY COMMERCIAL
SANITARY SEWER
PLANS

Design	KKL
Drawn by	FMR, KKL
Checked by	DCH
Date	MAY '89
Job no.	

MID-KANSAS ENGINEERING CONSULTANTS PA
3500 NORTH ROCK ROAD
BUILDING #800
WICHITA, KANSAS 67226

Sheet **1**
of **2**

