

PRIVATE SANITARY SEWER TO SERVE HARRIS ADDITION TO THE CITY OF WICHITA, KANSAS

JAMES ARMOUR, P.E. ACTING CITY ENGINEER
1543 PPS
OCA NO. 607681

INDEX

- 1 Cover
- 2 SS Plan and Profile
- 3 Manhole Details

GENERAL NOTES

- Contractor will be required to provide a minimum advance notice of twenty-four (24) hours to utility companies prior to starting any excavation as follows:

Kansas One-Call 1-800-344-7233

The Contractor must notify the following in case of an emergency.

Cox Cable	262-4270 or 263-2061
Kansas Gas & Electric - Gas	263-7511
Kansas Gas & Electric - Electric	264-1141
Arkla Gas Company	942-8350 or 263-8161
Southwestern Bell Tel. Co.	1-571-2611
City of Wichita Water Department	268-4508
City of Wichita Sewer Maintenance	268-4071

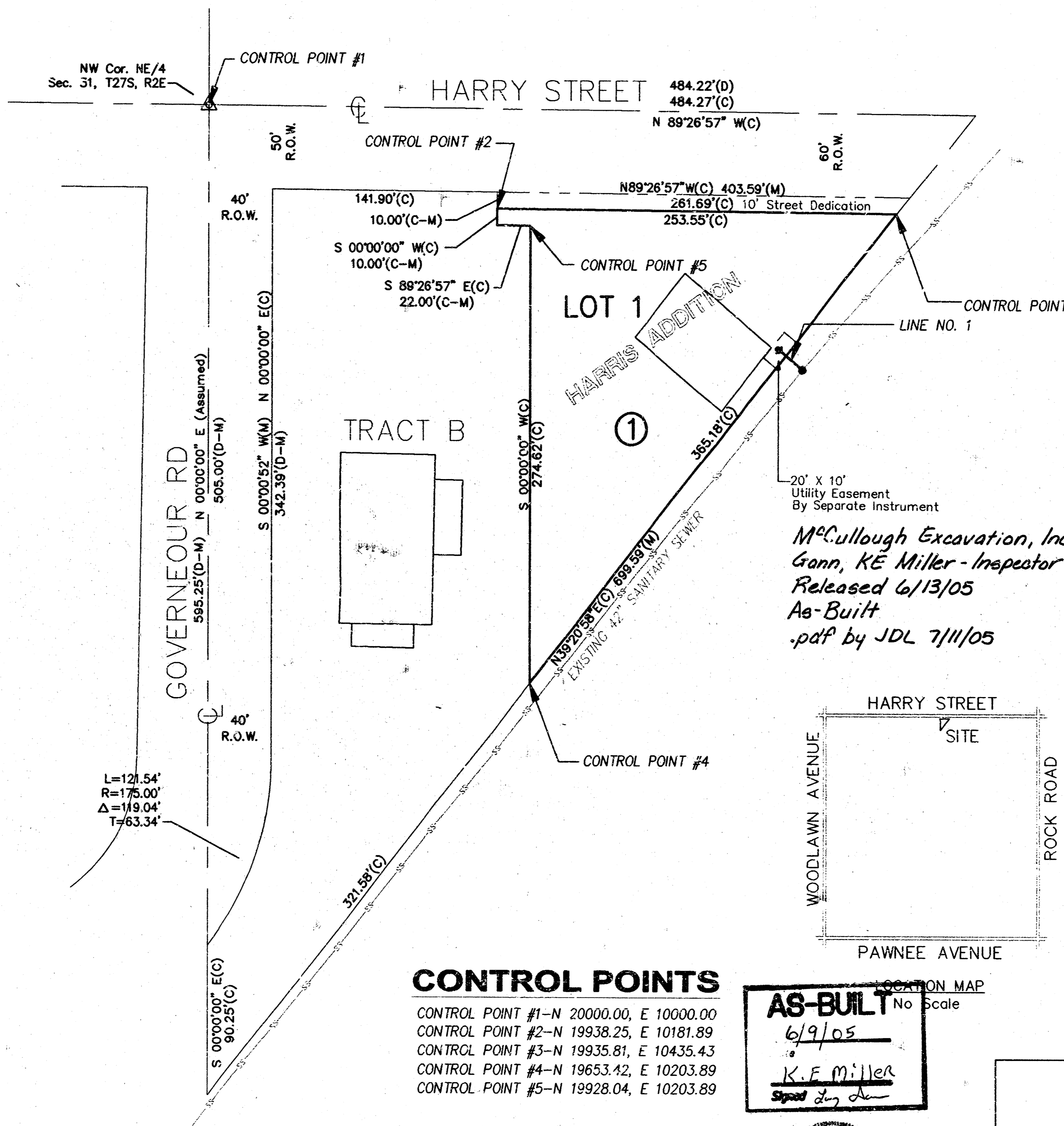
- Existing utility lines and their location, as shown on the plans, represent the best information obtainable for design. The contractor will be required to work around existing utilities within the right-of-way which do not conflict with proposed construction.
- The Contractor to verify utility locations prior to construction of this project.
- Utility service and installation shall be coordinated with the respective utility owners.
- All areas disturbed by construction shall be seeded with rye Rebel II Fescure grass at a rate of 350 lbs./acre immediately following construction in that area.
- Traffic affected by the construction of this project shall be handled in accordance with the latest edition of the Manual on Uniform Traffic Control Devices.
- All lawn/turf areas disturbed by construction of proposed improvements shall be restored with the same grass/ sod as existing. Restoration of disturbed areas shall include, but not be limited to, top soil preparation, seeding, mulch and/or reseeding. All seeding/sodding work shall be in accordance with the City of Wichita standard specifications and the City of Wichita administrative regulation No. AR78 which governs cleanup and replacement following construction. All costs for this work shall be subsidiary to the lump sum price bid for "Site Restoration."
- Existing flowline information obtained from city records.

BENCHMARK

Woodlawn and 17th St. North
C.O.W. Benchmark, 43' West and
32' South of centerline both.
Elev. 216.44 city datum, 1403.84 MSL

LEGEND

- (C) = Calculated
- (D) = Described
- (M) = Measured
- R.O.W. = Right-of-Way
- AMINC SET = 5/8" Rebar AMINC CLS #104 (set)
- ARMSTRONG = 5/8" Rebar w/Armstrong Cap(fd)
- = PK Nail (set)
- = PK Nail (found)
- ▲ = Section Corner
- ⊙ = gas meter
- ⊙ = power pole
- ⊙ = telephone pole
- = down guy
- ⊙ = sign
- ⊙ = fire hydrant
- ⊙ = mail box
- ⊙ = light pole
- ⊙ = water meter
- = overhead electric
- = fence line
- = underground gas line
- = water line
- = san. sewer line
- ⊙ = tree

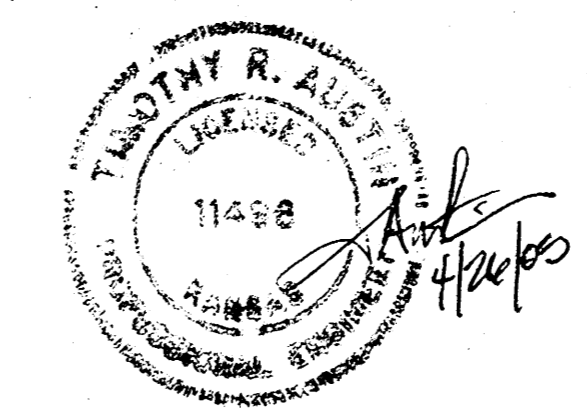


*McCullough Excavation, Inc. - Contractor
Gann, KE Miller - Inspector
Released 6/13/05
As-Built
pdP by JDL 7/11/05*

CONTROL POINTS

- CONTROL POINT #1-N 20000.00, E 10000.00
- CONTROL POINT #2-N 19938.25, E 10181.89
- CONTROL POINT #3-N 19935.81, E 10435.43
- CONTROL POINT #4-N 19653.42, E 10203.89
- CONTROL POINT #5-N 19928.04, E 10203.89

AS-BUILT
6/9/05
K.F. Miller
Signed by *[Signature]*



APRIL 2005

PLANS PREPARED BY

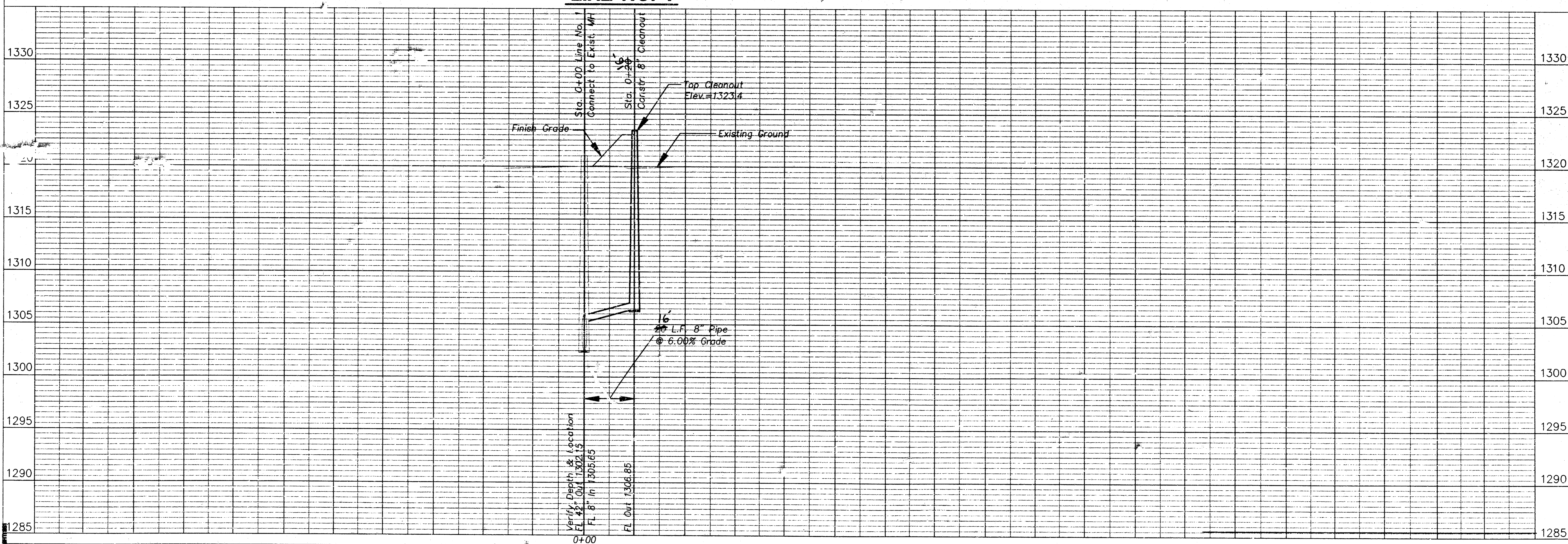
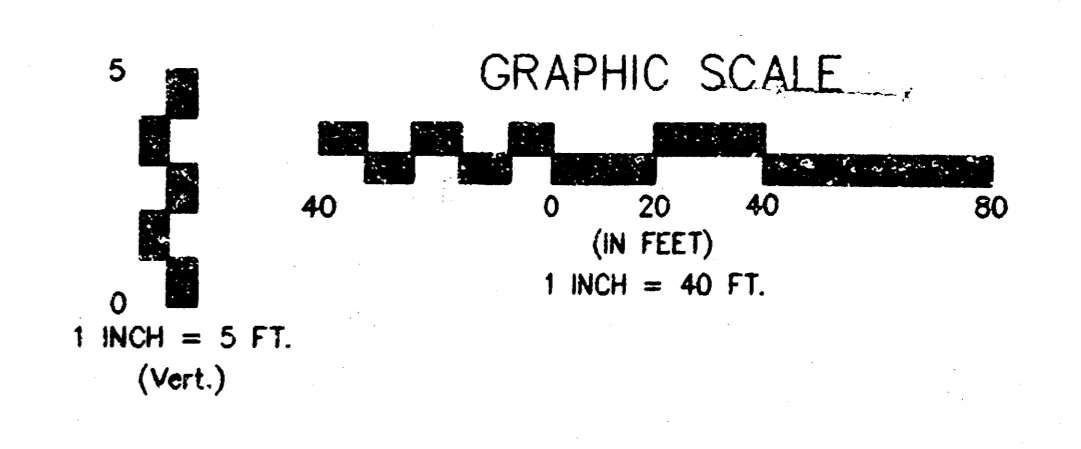
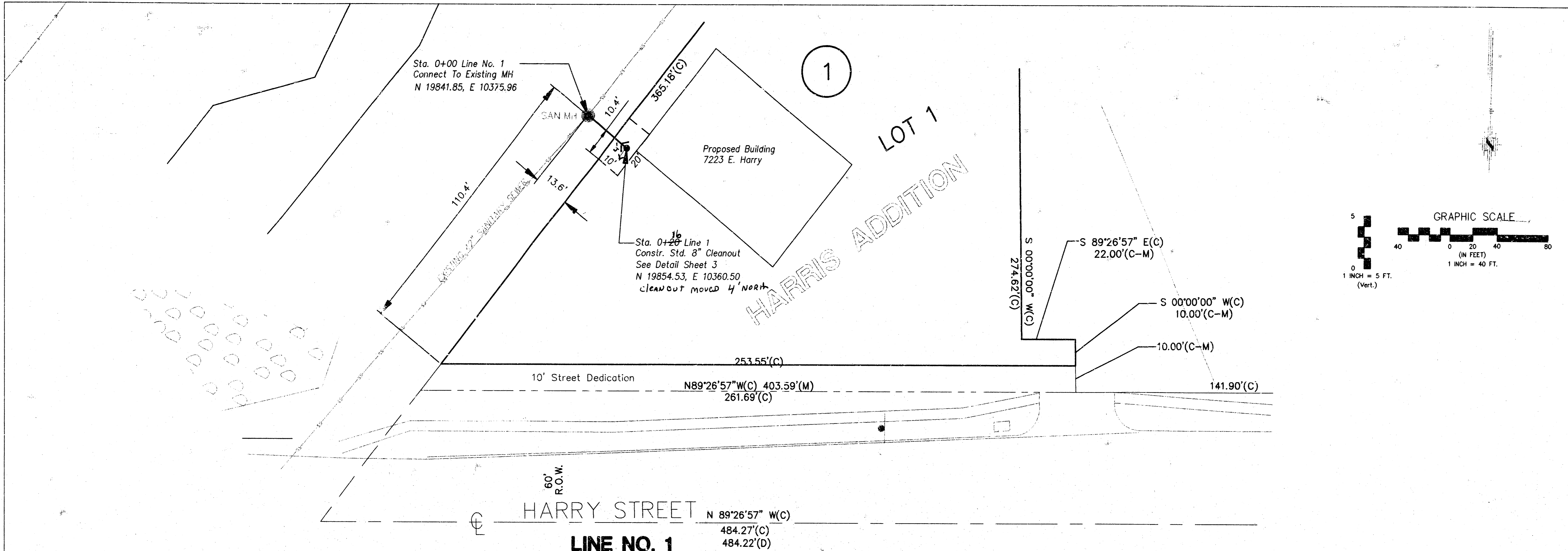
POE & ASSOCIATES, INC.
CONSULTING ENGINEERS
5940 E. Central, Suite 200 • Wichita, KS 67208-4242
Phone 316/685-4114 • FAX 316/685-4444

APPROVED AS NOTED BY CITY ENGINEER OF WICHITA

SANITARY SEWER VRH 5/5/05

Inspection and testing for this project are to be provided by a Licensed Consulting Engineering Firm under contract with the Owner/Developer. Said inspection is to be in accordance with the City of Wichita standard construction engineering practices and certified by a Licensed Professional Engineer. No work shall be performed in dedicated easements or public right-of-way by the Contractor without such inspection nor shall work be commenced without written authorization by the City Engineer. All construction and materials shall comply with the City of Wichita Specifications and Standards (on file and available in the City Engineer's Office).

E:\PROJECTS\2005\20050426\20050426.dwg Tue Apr 26 07:48:46 2005 Steve Schmitt-Poe & Associates of Kansas, Inc.



LOT 1, BLOCK 1, HARRIS ADDITION
SANITARY SEWER IMPROVEMENTS
SEWERLINE NO. 1

CITY OF WICHITA, KANSAS
JAMES ARMOUR, P.E. - ACTING CITY ENGINEER
1543 PFS O.C.A.# 607851

FOE & ASSOCIATES OF KANSAS, INC.
CONSULTING ENGINEERS
5940 E. Centre, Suite 200 • Wichita, KS 67208-4242
Phone: 316.685-4114 • FAX: 316.685-4444

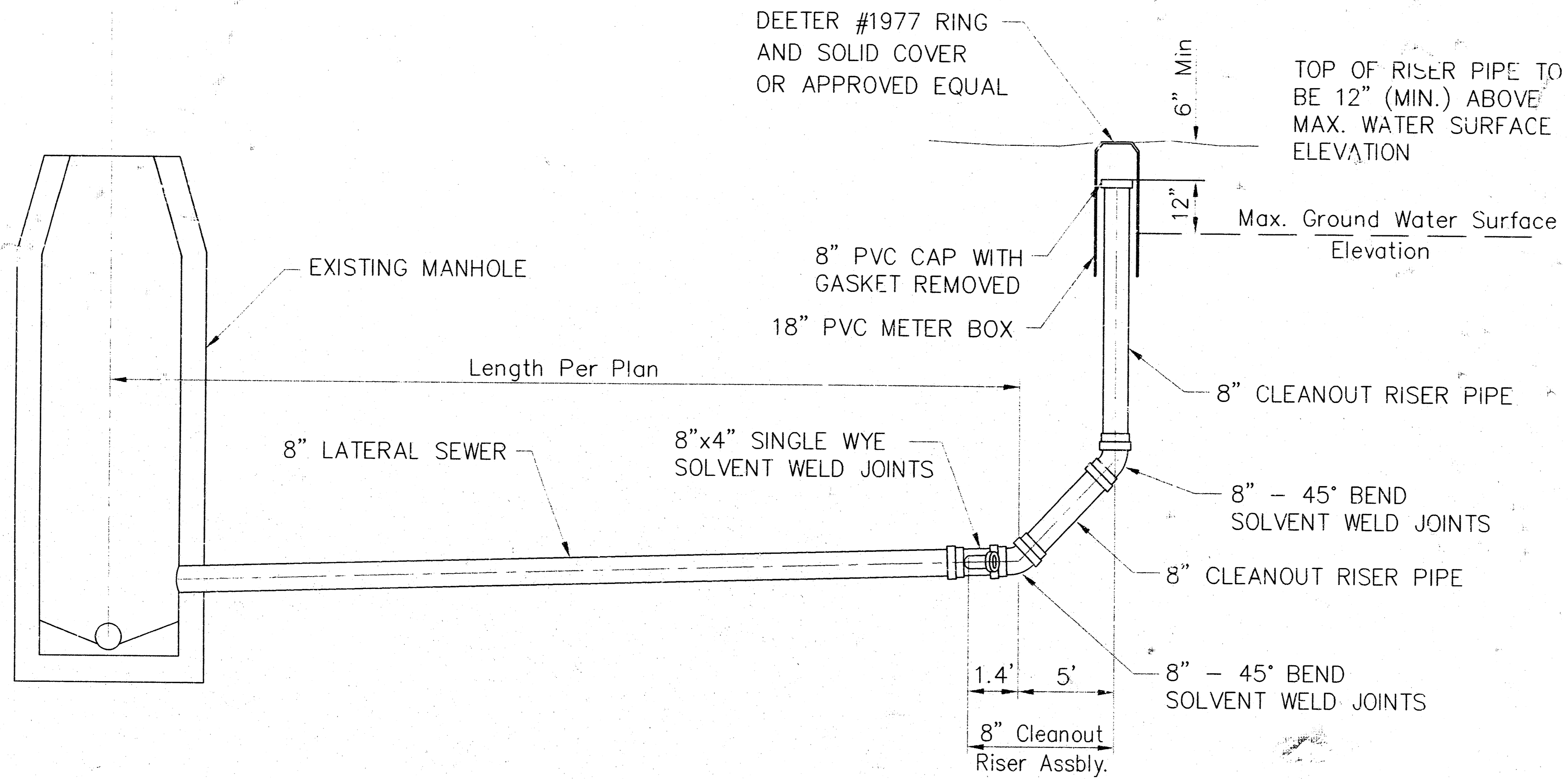
FOE

FINAL

DATE: 04/26/05

2 3

Tue Apr 26 07:39:45 2005 Steve Schmitt-poe & Associates of Kansas, Inc.



FINAL Drawn By: S. Schmitt Date: 04/17/05	3 3		LOT 1, BLOCK 1, HARRIS ADDITION SANITARY SEWER IMPROVEMENTS CLEANOUT DETAIL
			CITY OF WICHITA, KANSAS JAMES ARMOUR, P.E. - ACTING CITY ENGINEER 1543 PPS O.C.A.# 607861