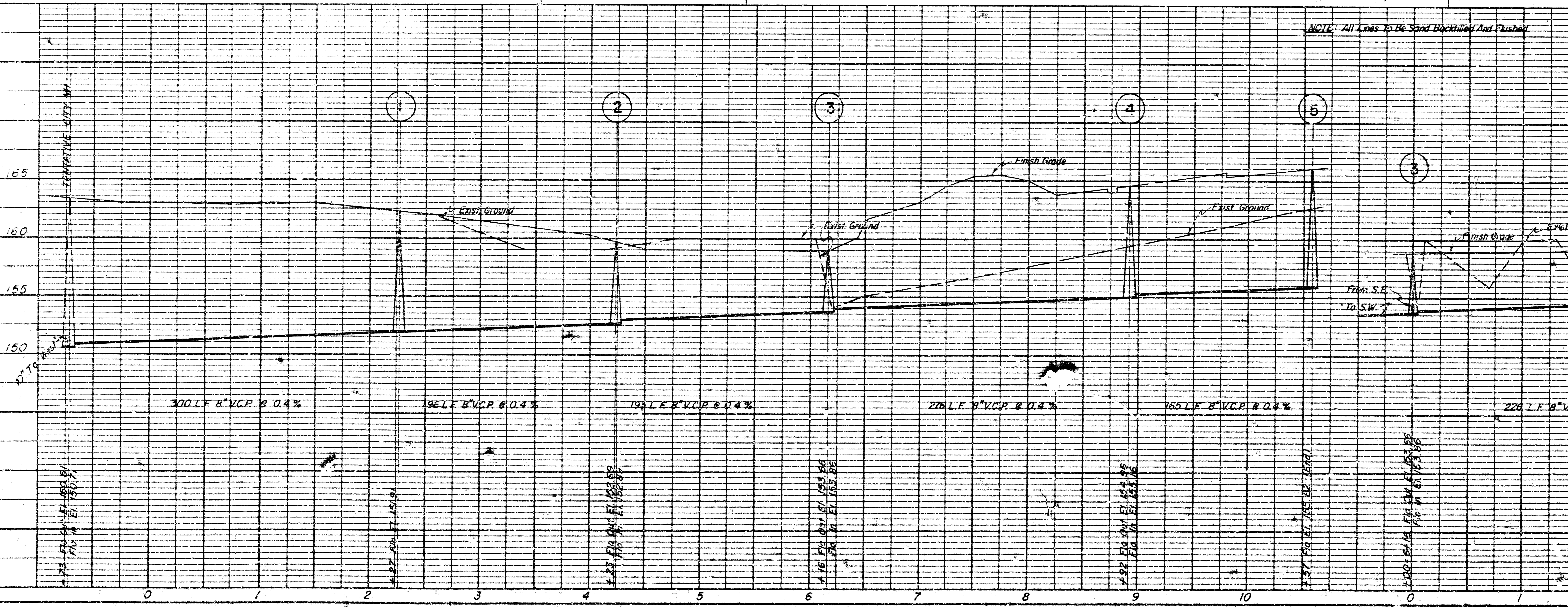


NOTE TO CONTRACTOR
 This project was prepared under the supervision of the City Engineer and the City Engineer is responsible for the accuracy of the information shown hereon. The Engineer's office is not responsible for the accuracy of the information shown hereon if it is used for any purpose other than that for which it was prepared.

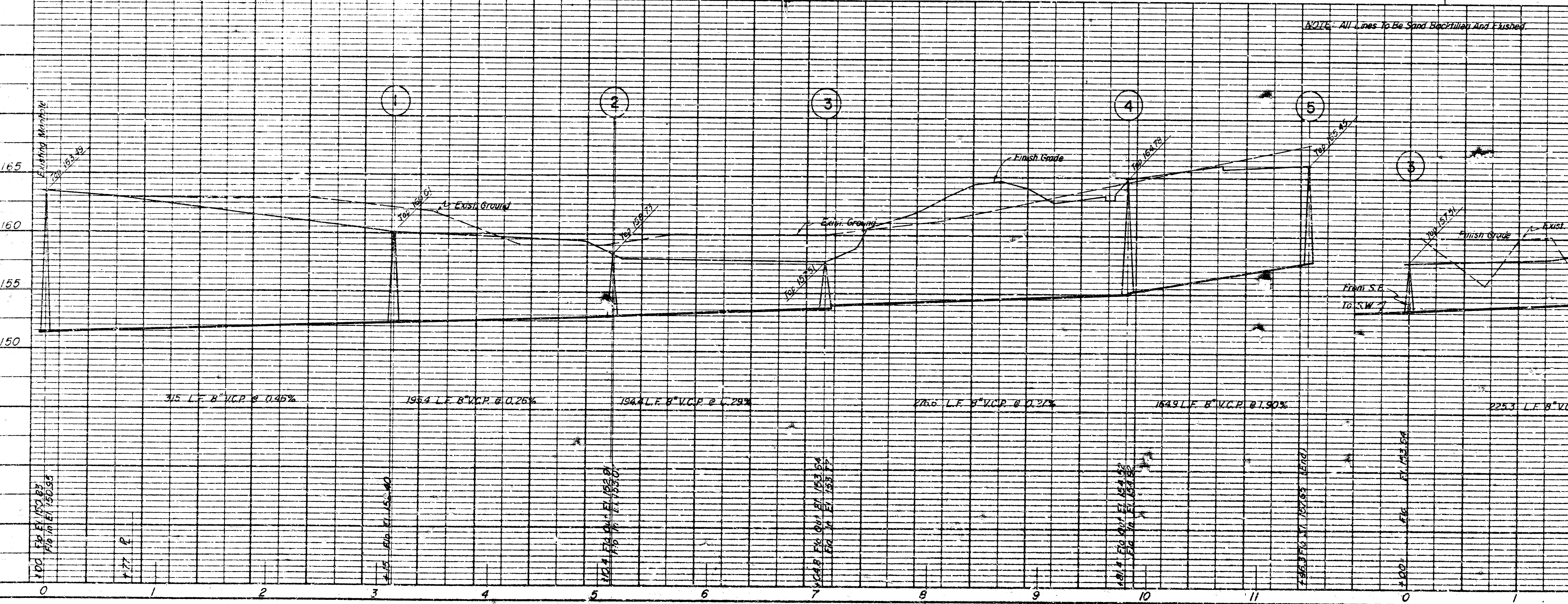
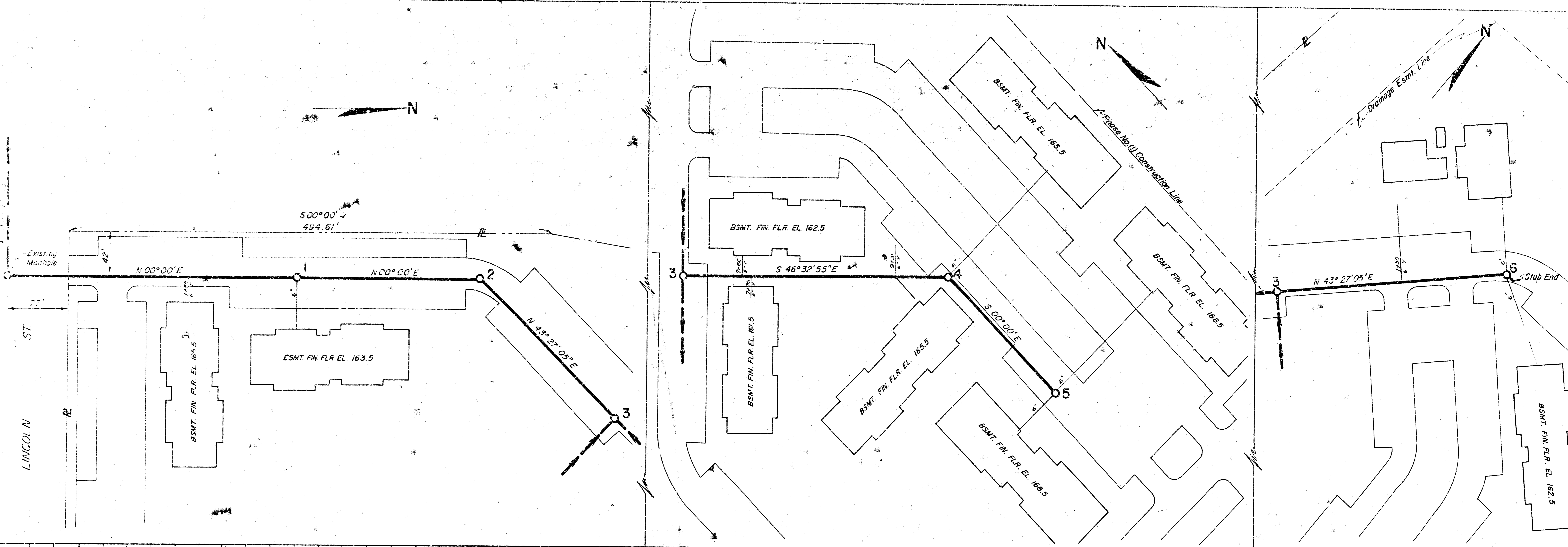
APPROVED
 BY CITY ENGINEER
 DATE: 11-17-88
 SCALE: AS SHOWN
 DRAWN BY: [Signature]



**HIGH POINT EAST
 WICHITA, KANSAS
 ONSITE SANITARY SEWER
 PLAN & PROFILE**

SCALE
 PLAN: 1" = 50'
 PROFILE: Ver. 1" = 5'
 Ho. 1" = 50'

MOHRING & ASSOCIATES CONSULTING ENGINEERS



9-24
Rev. as b
11-8

HIGH POINT EAST
WICHITA, KANSAS

**ONSITE SANITARY SEWER
PLAN & PROFILE**

SCALE
PLAN: 1" = 50'
PROFILE: Ver. 1" = 5'
Hor. 1" = 50'

MOEHRING & ASSOCIATES CONSULTING ENGINEERS

M.C.
11-8-84

NOTE: All Lines To Be Sand Block With Not Flashed

From S.E. To S.W. 2'

36' F.P. EL. 163.00' (Stub End)