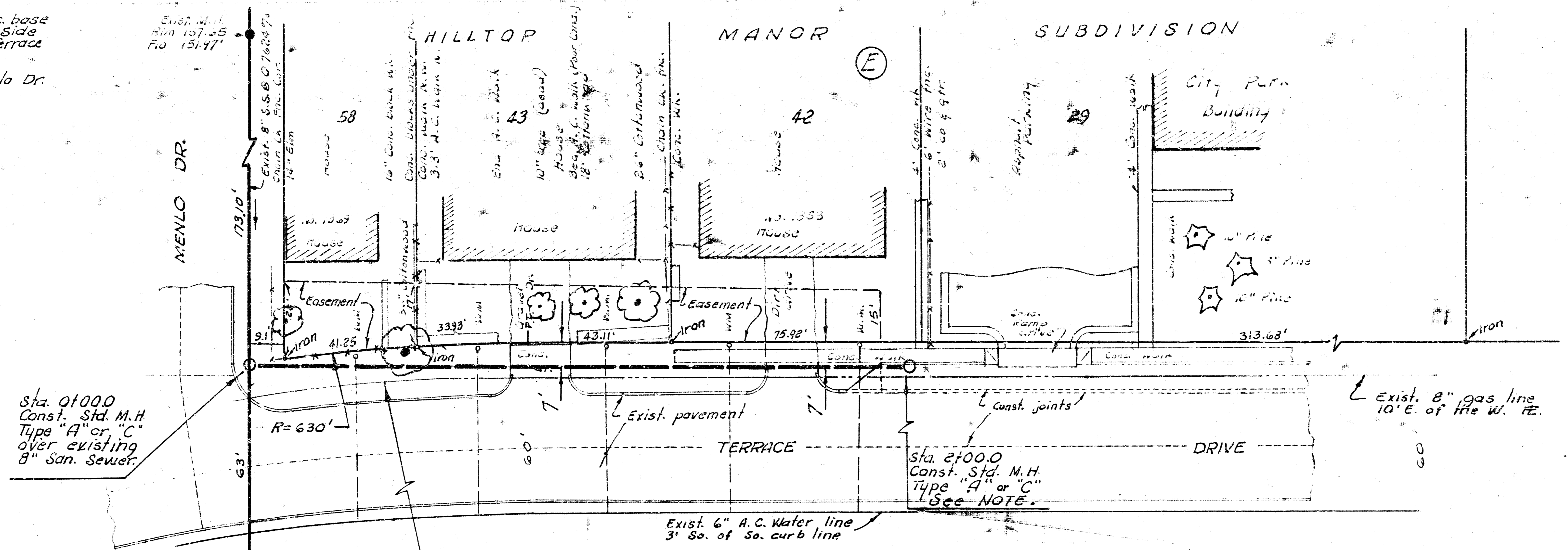


B.M. 157.08 "a" cut N.W. cor. conc. base  
 Med-Lowmark Theatre Sign So. Side  
 Harry Approx. 100 ft. W. of Terrace  
 Drive.

B.M. 157.07 "a" cut Top W. cb Menlo Dr.  
 @ N.L. Terrace Dr.



Plan Scale 1" = 20'  
 Profile Scale 1" = 5'

NOTE: THE PRICE BID FOR HOUSE SERVICE CONNECTIONS  
 SHALL INCLUDE ALL COSTS FOR CONNECTING SERVICE  
 LINES FROM LOTS 42, 43, AND 58 TO NEW SEWER.  
 CONTRACTOR WILL BE REQUIRED TO OBTAIN PERMITS TO  
 CONNECT SERVICE LINES TO NEW SEWER.

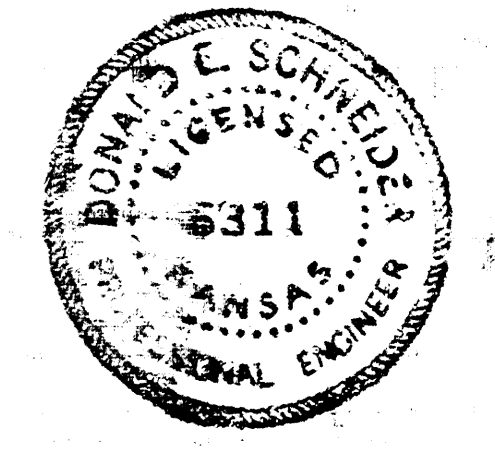
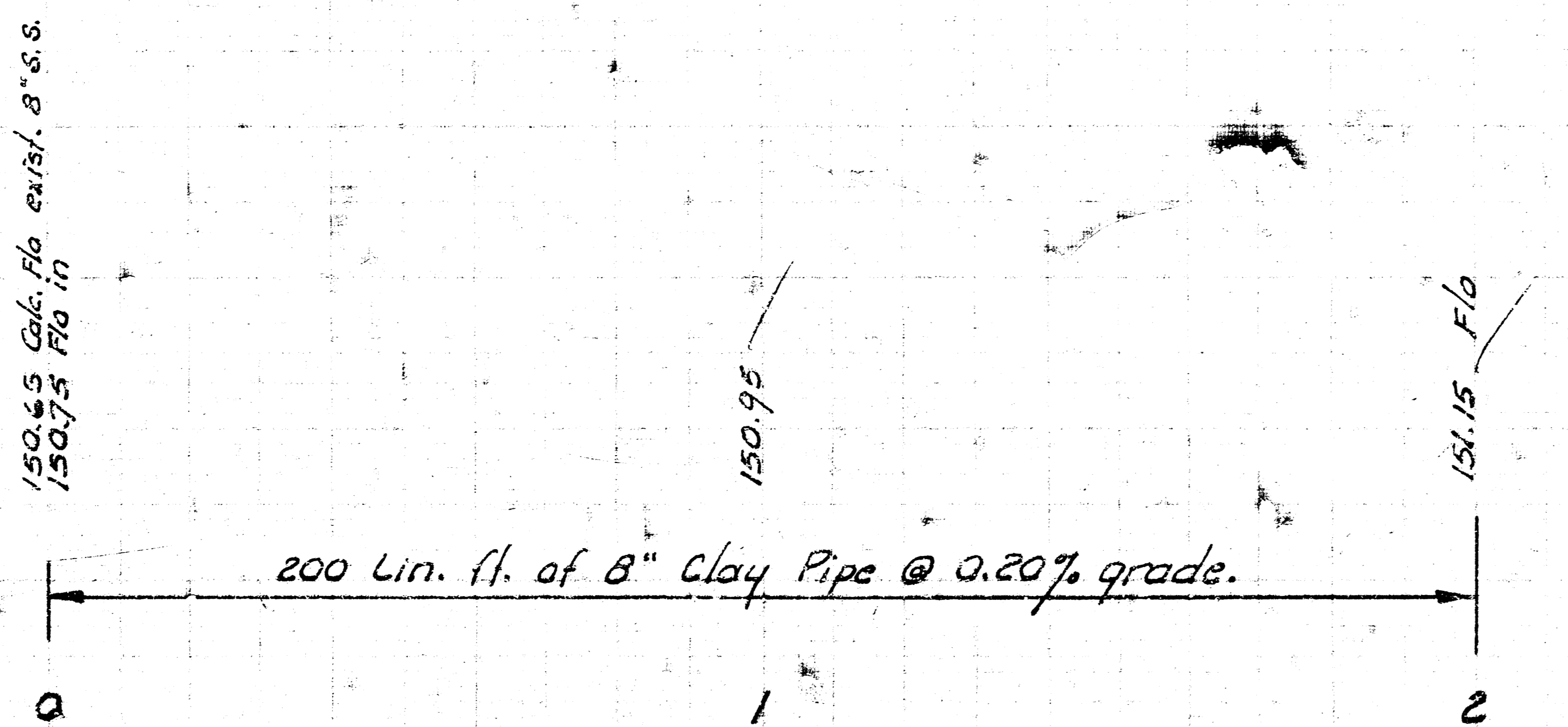
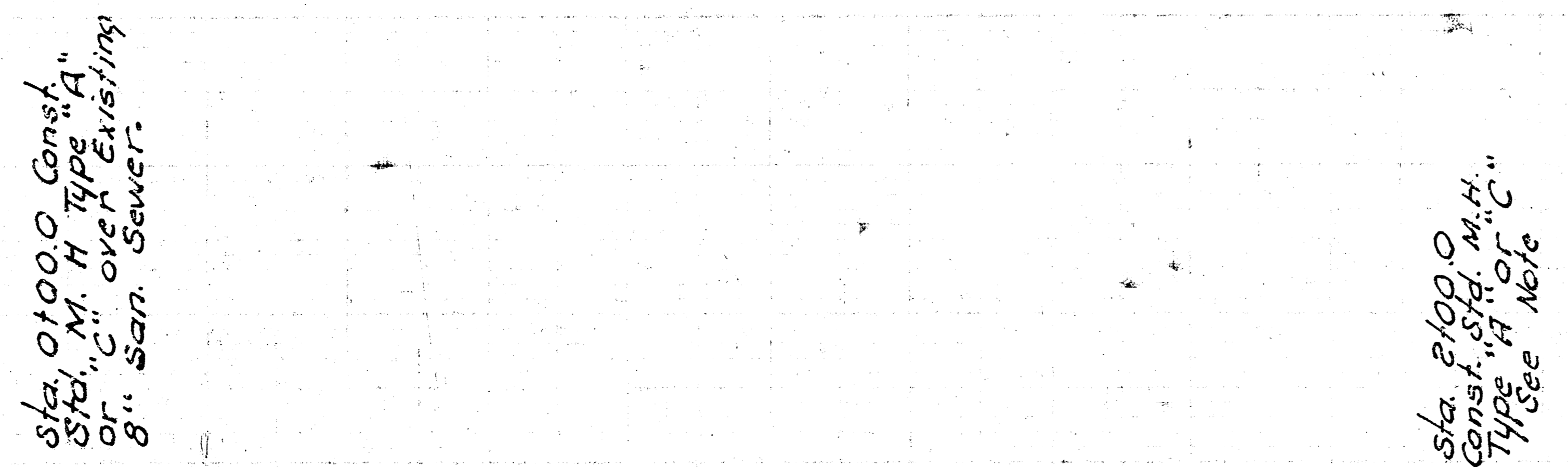
Exist. M.H.  
 N. Rim 156.85  
 FLO 150.17 N.W.  
 FLO 149.77 S.W.  
 FLO 150.09 N.E.

**CAUTION:**  
 Existing 8" gas line.

**NOTE:**  
 End manhole to be installed  
 on the last building sewer  
 lead north of Menlo Dr. for  
 lot No. 42.

Replace all drives, pavements  
 sidewalks and fences.

Intercept all house sewer lead.



ALTER, REPAIR, RECONSTRUCT OR  
 CONSTRUCT A SEWER TO  
 SUPPLEMENT LINE 10 HILLTOP MANOR SEWER  
 Along Terrace Dr. from Menlo Dr. to 200 ft. north of Menlo Dr.  
 CITY OF WICHITA, KANSAS

R. W. LINN — CITY ENGINEER  
 NOV. 1974 PROJECT NO. DBKL574095