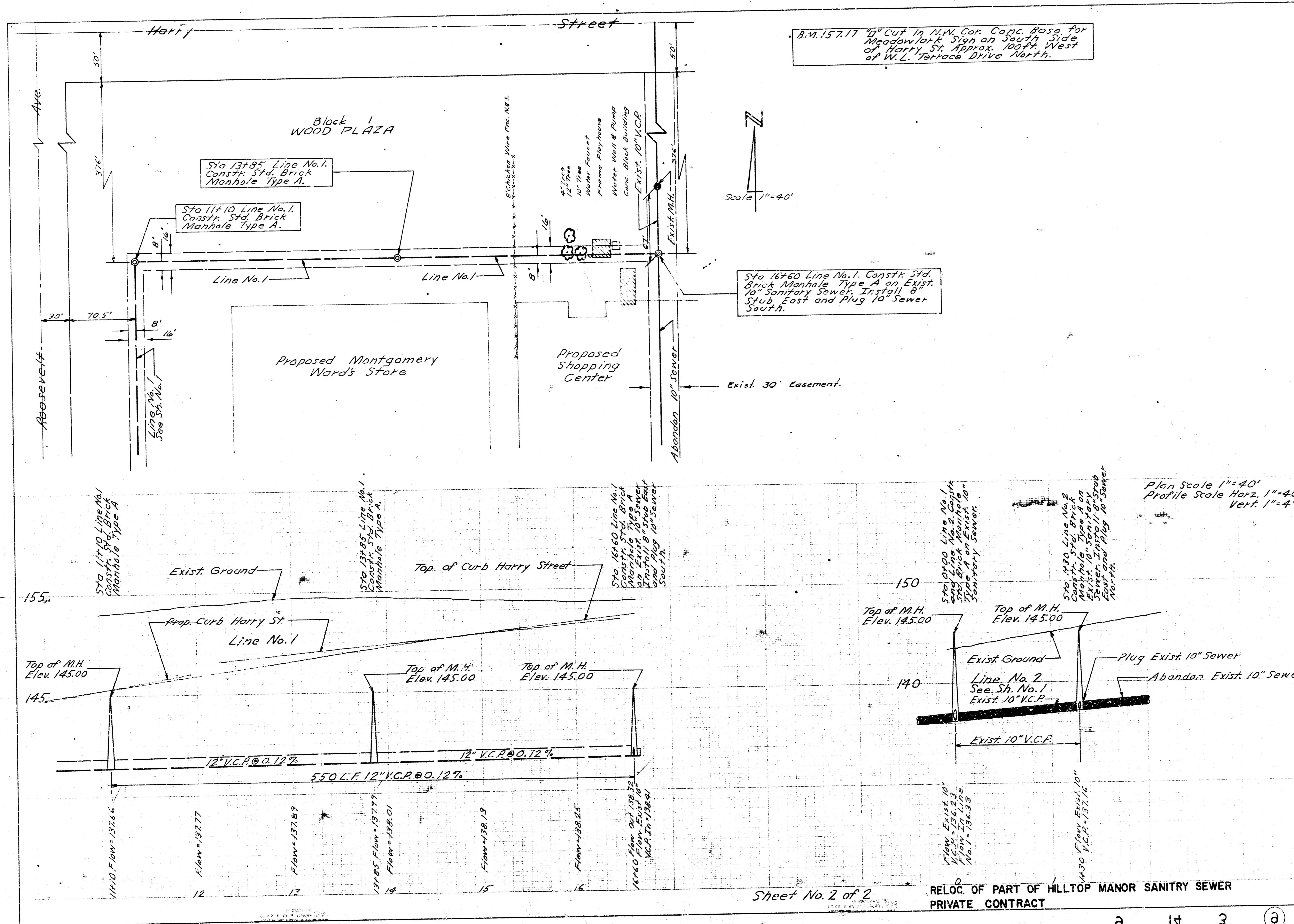


RELOC. OF PART OF
 HILLTOP MANOR SAN. SEW.
 CITY OF WICHITA, KANSAS
 B. E. SMITH, CITY ENGINEER
 PRIVATE CONTRACT
 DATE: MARCH 1969

Sheet No. 1 of 2



B.M. 157.17 10" Cut in N.W. Cor. Conc. Base for Meadowlark Sign on South Side of Harry St. Approx. 100ft West of W.L. Terrace Drive North.

N
Scale 1"=40'

Sta 16+60 Line No. 1, Constr. Std. Brick Manhole Type A on Exist. 10" Sanitary Sewer. Install 6" Stub East and Plug 10" Sewer South.

Plan Scale 1"=40'
Profile Scale Horiz. 1"=40'
Vert. 1"=4'

Sheet No. 2 of 2

RELOC. OF PART OF HILLTOP MANOR SANITARY SEWER
PRIVATE CONTRACT