

PRIVATE SANITARY SEWER SERVING: LOT 2, BLOCK 1 JEFF AND JAY THIRD ADDITION PRIVATE PROJ. NO. 245 PPS

CITY OF WICHITA, KANSAS
MICHAEL E. LINDEBAK, CITY ENGINEER

GENERAL NOTES

1. ALL CONSTRUCTION AND MATERIALS TO COMPLY WITH CITY OF WICHITA SPECIFICATIONS AND STANDARDS.
2. THE CONTRACTOR SHALL BE RESPONSIBLE FOR PRESERVING PROPERTY IRONS. THE CONTRACTOR SHALL BE REQUIRED TO RE-ESTABLISH ANY PROPERTY IRONS WHICH ARE DAMAGED OR DESTROYED BY HIS CONSTRUCTION OPERATIONS. SUCH IRONS SHALL BE RE-ESTABLISHED BY A LICENSED LAND SURVEYOR IN ACCORDANCE WITH STATE LAWS.
3. CONTRACTOR WILL BE REQUIRED TO PROVIDE A MINIMUM ADVANCE NOTICE OF TWENTY-FOUR (24) HOURS TO UTILITY COMPANIES PRIOR TO STARTING ANY EXCAVATION AS FOLLOWS:

KANSAS - ONE-CALL	1-800-344-7233
-------------------	----------------

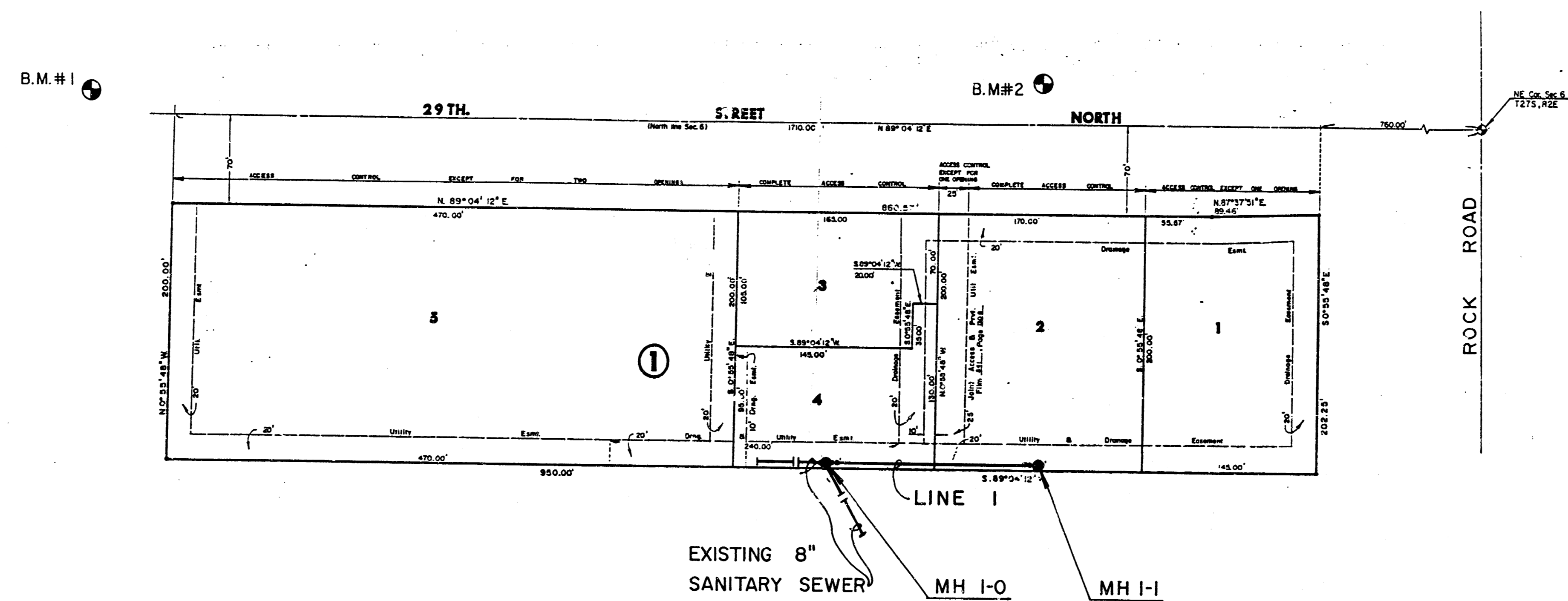
THE CONTRACTOR MUST NOTIFY THE FOLLOWING IN CASE OF EMERGENCY:

ARKLA GAS COMPANY	942-8350 or 263-8161
BELL TELEPHONE	1-316-571-2611
CABLEVISION	262-4270 or 262-2061
KPL GAS SERVICE COMPANY	263-7511
KANSAS GAS & ELECTRIC	264-1141
CITY OF WICHITA WATER DEPARTMENT	268-4908
CITY OF WICHITA SEWER MAINTENANCE	268-4071
4. EXISTING UTILITIES AND THEIR LOCATIONS, AS SHOWN ON THE PLANS, REPRESENT THE BEST INFORMATION OBTAINABLE FOR DESIGN. LOCATION INFORMATION HAS BEEN OBTAINED FROM THE VARIOUS UTILITY COMPANIES AND IS EITHER FROM COMPANY RECORD DRAWINGS OR COMPANY PROVIDED FIELD LOCATIONS. THE PLAN LOCATIONS SHOWN ARE NOT GUARANTEED. ADDITIONAL EXISTING UTILITIES MAY ALSO BE ENCOUNTERED.
5. ALL STUBS AND PLUGGED PIPES SHALL BE LOCATED WITH GREEN PLASTIC TAPE IN THE SAME MANNER AS RISERS.
6. COST OF EXCAVATION, HAULING, RIGHT OF WAY CLEARING AND DUMPING OF EXCESS EXCAVATION SHALL BE SUBSIDIARY TO THE PROJECT.
7. THE CONTRACTOR SHALL BE RESPONSIBLE FOR MAINTAINING CONTINUOUS FLOW FOR SEWAGE THROUGH CONSTRUCTION. CONTRACTOR'S PROPOSED METHOD FOR MAINTAINING SEWAGE FLOW SHALL BE APPROVED BY THE ENGINEER. COST OF MAINTAINING SEWAGE FLOW THROUGH CONSTRUCTION SHALL BE CONSIDERED SUBSIDIARY TO THE OTHER ITEMS OF WORK.
8. DIRT FROM BASEMENT EXCAVATION ON SITE TO BE REMOVED BY OTHERS PRIOR TO CONSTRUCTION.

BENCH MARKS

- B.M.# 1 City of Wichita BenchMark Disc, 75' West and 56' North of Quarter Section Corner.
Elev. = 182.47 City Datum.
- B.M.# 2 " " Cut on S.E. Corner of Inlet at West End of N.W. Return at 29th and Longfellow.
Elev. = 196.22 City Datum.

NOTE: B.M.# 1 is 182.57 According to City B.M. Book.



INDEX TO DRAWINGS

SHEET NO.	DESCRIPTION
1	TITLE SHEET
2	PLAN & PROFILE SHEET

N
Scale: 1" = 80'

APPROVED AS NOTED
By CITY ENGINEER OF WICHITA

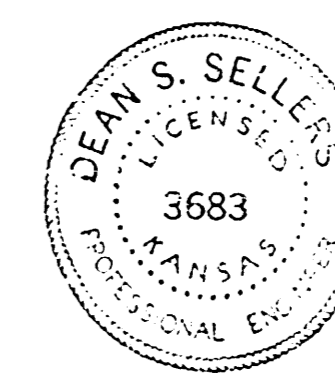
Sanitary Sewers V.R.H. 4/5/90
Storm Sewers _____
Driveway Approaches _____
Water Mains _____
Paving _____

NOTE TO CONTRACTOR

INSPECTION AND TESTING FOR THIS PROJECT IS TO BE PROVIDED BY A LICENSED CONSULTING ENGINEERING FIRM UNDER CONTRACT WITH THE OWNER/DEVELOPER. SAID INSPECTION TO BE IN ACCORDANCE WITH THE CITY OF WICHITA STANDARD CONSTRUCTION ENGINEERING PRACTICES AND CERTIFIED BY A LICENSED PROFESSIONAL ENGINEER. NO WORK SHALL BE PERFORMED IN DEDICATED EASEMENTS OR THE PUBLIC RIGHT-OF-WAY BY THE CONTRACTOR WITHOUT SUCH INSPECTION NOR SHALL ANY WORK BE COMMENCED IN DEDICATED EASEMENTS OR PUBLIC RIGHT-OF-WAY WITHOUT WRITTEN AUTHORIZATION BY THE CITY ENGINEER.

*BOOKED
RDL
8-90*

AS BUILT: JULY 1990 KSM



JEFF AND JAY THIRD ADDITION	Design D.S.S.
	Drawn by K.S.M.
PRIVATE SANITARY SEWER	Checked by
	Date MAR. 1990
MID-KANSAS ENGINEERING CONSULTANTS PA 3500 NORTH ROCK ROAD BUILDING #800 WICHITA, KANSAS 67226	
636-5566	
Sheet 1 of 2	

PRIVATE SANITARY SEWER SERVING: LOT 2, BLOCK 1 JEFF AND JAY THIRD ADDITION PRIVATE PROJ. NO. 245 PPS

CITY OF WICHITA, KANSAS
MICHAEL E. LINDEBAK, CITY ENGINEER

GENERAL NOTES

1. ALL CONSTRUCTION AND MATERIALS TO COMPLY WITH CITY OF WICHITA SPECIFICATIONS AND STANDARDS.
2. THE CONTRACTOR SHALL BE RESPONSIBLE FOR PRESERVING PROPERTY IRONS. THE CONTRACTOR SHALL BE REQUIRED TO RE-ESTABLISH ANY PROPERTY IRONS WHICH ARE DAMAGED OR DESTROYED BY HIS CONSTRUCTION OPERATIONS. SUCH IRONS SHALL BE RE-ESTABLISHED BY A LICENSED LAND SURVEYOR IN ACCORDANCE WITH STATE LAWS.
3. CONTRACTOR WILL BE REQUIRED TO PROVIDE A MINIMUM ADVANCE NOTICE OF TWENTY-FOUR (24) HOURS TO UTILITY COMPANIES PRIOR TO STARTING ANY EXCAVATION AS FOLLOWS:

KANSAS - ONE-CALL	1-800-344-7233
-------------------	----------------

THE CONTRACTOR MUST NOTIFY THE FOLLOWING IN CASE OF EMERGENCY:

ARKLA GAS COMPANY	942-8350 or 263-8161
BELL TELEPHONE	1-316-571-2611
CABLEVISION	262-4270 or 262-2061
KPL GAS SERVICE COMPANY	263-7511
KANSAS GAS & ELECTRIC	264-1141
CITY OF WICHITA WATER DEPARTMENT	268-4908
CITY OF WICHITA SEWER MAINTENANCE	268-4071
4. EXISTING UTILITIES AND THEIR LOCATIONS, AS SHOWN ON THE PLANS, REPRESENT THE BEST INFORMATION OBTAINABLE FOR DESIGN. LOCATION INFORMATION HAS BEEN OBTAINED FROM THE VARIOUS UTILITY COMPANIES AND IS EITHER FROM COMPANY RECORD DRAWINGS OR COMPANY PROVIDED FIELD LOCATIONS. THE PLAN LOCATIONS SHOWN ARE NOT GUARANTEED. ADDITIONAL EXISTING UTILITIES MAY ALSO BE ENCOUNTERED.
5. ALL STUBS AND PLUGGED PIPES SHALL BE LOCATED WITH GREEN PLASTIC TAPE IN THE SAME MANNER AS RISERS.
6. COST OF EXCAVATION, HAULING, RIGHT OF WAY CLEARING AND DUMPING OF EXCESS EXCAVATION SHALL BE SUBSIDIARY TO THE PROJECT.
7. THE CONTRACTOR SHALL BE RESPONSIBLE FOR MAINTAINING CONTINUOUS FLOW FOR SEWAGE THROUGH CONSTRUCTION. CONTRACTOR'S PROPOSED METHOD FOR MAINTAINING SEWAGE FLOW SHALL BE APPROVED BY THE ENGINEER. COST OF MAINTAINING SEWAGE FLOW THROUGH CONSTRUCTION SHALL BE CONSIDERED SUBSIDIARY TO THE OTHER ITEMS OF WORK.
8. DIRT FROM BASEMENT EXCAVATION ON SITE TO BE REMOVED BY OTHERS PRIOR TO CONSTRUCTION.

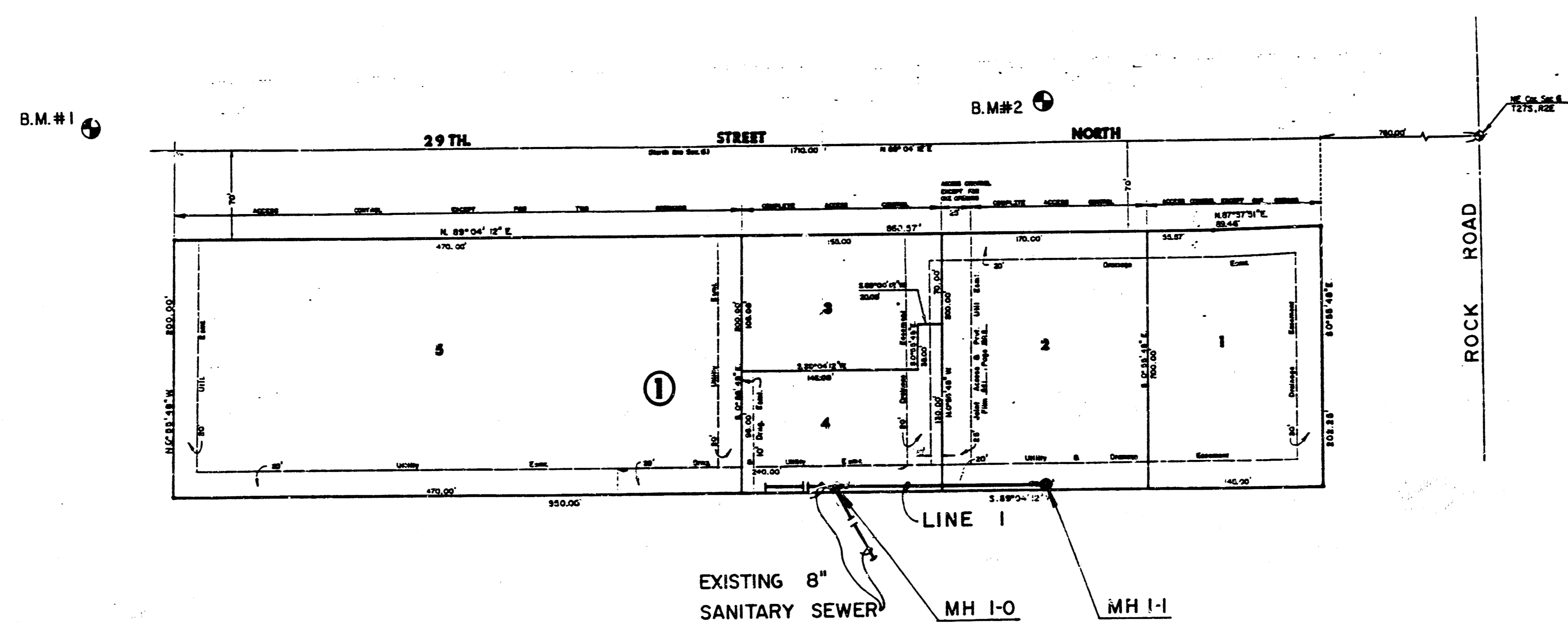
BENCH MARKS

- B.M.# 1 City of Wichita BenchMark Disc, 75' West and 56' North of Quarter Section Corner. Elev. = 182.47 City Datum.
- B.M.# 2 " " Cut on S.E. Corner of Inlet at West End of N.W. Return at 29th and Longfellow. Elev. = 196.22 City Datum.

NOTE: B.M.# 1 is 182.57 According to City B.M. Book.

INDEX TO DRAWINGS

SHEET NO.	DESCRIPTION
1	TITLE SHEET
2	PLAN & PROFILE SHEET



Scale: 1" = 80'

APPROVED AS NOTED
By CITY ENGINEER OF WICHITA

Sanitary Sewers VRH 4/5/90

Storm Sewers _____

Driveway Approaches _____

Water Mains _____

Paving _____

NOTE TO CONTRACTOR

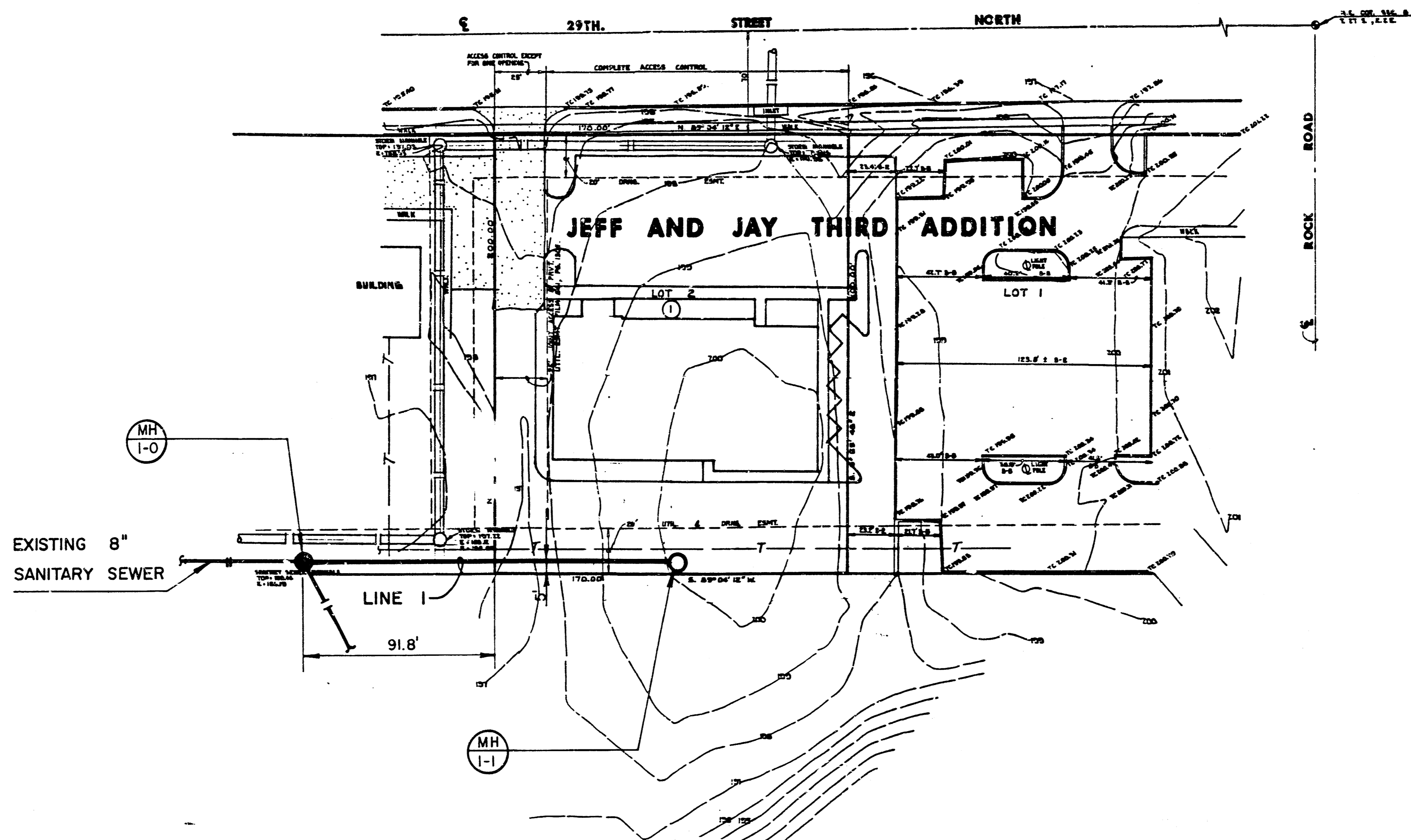
INSPECTION AND TESTING FOR THIS PROJECT IS TO BE PROVIDED BY A LICENSED CONSULTING ENGINEERING FIRM UNDER CONTRACT WITH THE OWNER/DEVELOPER. SAID INSPECTION TO BE IN ACCORDANCE WITH THE CITY OF WICHITA STANDARD CONSTRUCTION ENGINEERING PRACTICES AND CERTIFIED BY A LICENSED PROFESSIONAL ENGINEER. NO WORK SHALL BE PERFORMED IN DEDICATED EASEMENTS OR THE PUBLIC RIGHT-OF-WAY BY THE CONTRACTOR WITHOUT SUCH INSPECTION NOR SHALL ANY WORK BE COMMENCED IN DEDICATED EASEMENTS OR PUBLIC RIGHT-OF-WAY WITHOUT WRITTEN AUTHORIZATION BY THE CITY ENGINEER.



JEFF AND JAY THIRD ADDITION	PRIVATE SANITARY SEWER	Design DSS
		Drawn by KSM Checked by
		Date MAR. 1990 Job no.
MID-KANSAS ENGINEERING CONSULTANTS PA 3500 NORTH ROCK ROAD BUILDING 1800 WICHITA, KANSAS 67226		Sheet 1 of 2

original 1/1/90

JEFF AND JAY THIRD ADDITION
PRIVATE SANITARY SEWER
PRIV. PROJ. NO.



PLAN LINE 1

PROFILE LINE 1

