

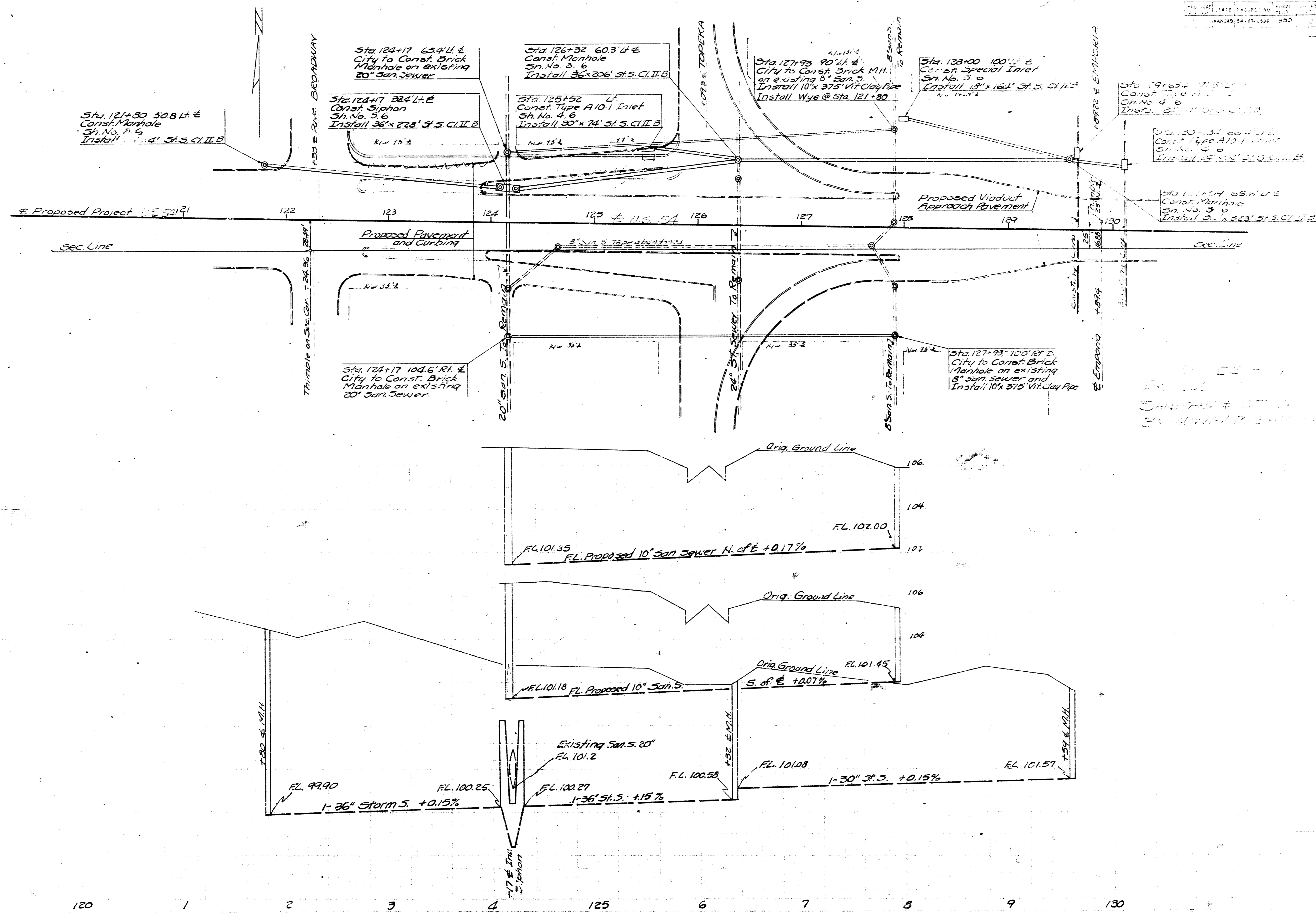
SUMMARY OF QUANTITIES	
Sanitary Sewers	192 Lin. Ft.
Brick Manholes	2
Fill Sand	116 Tons

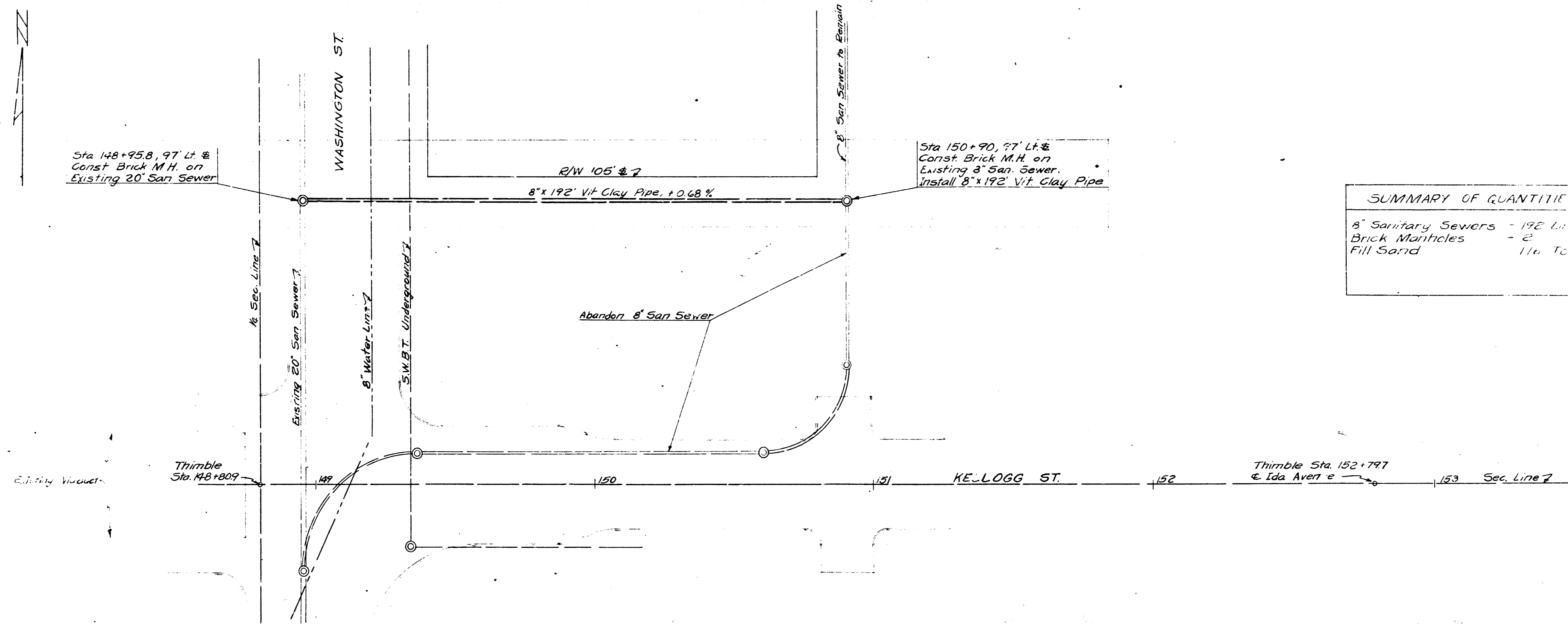
NO.	DESCRIPTION	AMOUNT
1	Sanitary Sewer	192 Lin. Ft.
2	Brick Manholes	2
3	Fill Sand	116 Tons

NO.	DESCRIPTION	AMOUNT
1	Sanitary Sewer	192 Lin. Ft.
2	Brick Manholes	2
3	Fill Sand	116 Tons

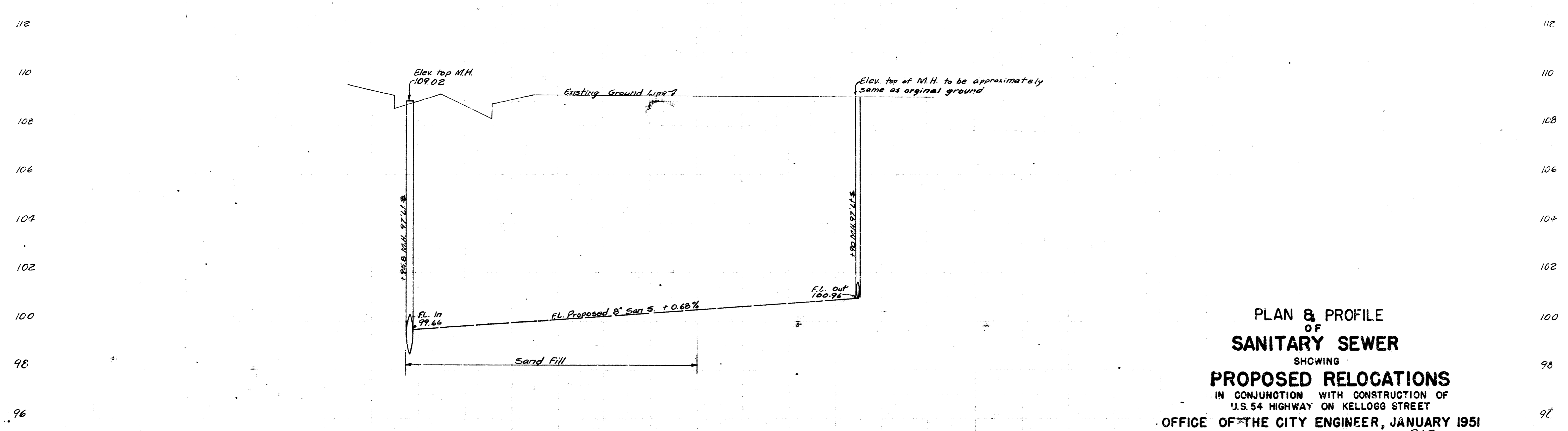
PLAN & PROFILE
 OF
SANITARY SEWER
 SHOWING
PROPOSED RELOCATIONS
 IN CONNECTION WITH CONSTRUCTION OF
 U.S. 44 HIGHWAY ON KELLOGG STREET
 OFFICE OF THE CITY ENGINEER, JANUARY 1951
 WICHITA, KANSAS DRAWN BY *[Signature]*
 HORIZ. SCALE 1"=20'
 VERT. SCALE 1"=2'

DATE	PROJECT NO.	SHEET	TOTAL
10/15/11	11221	17	17
DATE	PROJECT NO.	SHEET	TOTAL
10/15/11	11221	17	17





SUMMARY OF QUANTITIES	
8" Sanitary Sewers	192 Lin. Ft.
Brick Manholes	2
Fill Sand	116 Tons



PLAN & PROFILE
 OF
SANITARY SEWER
 SHOWING
PROPOSED RELOCATIONS
 IN CONJUNCTION WITH CONSTRUCTION OF
 U.S. 54 HIGHWAY ON KELLOGG STREET
 OFFICE OF THE CITY ENGINEER, JANUARY 1951
 WICHITA, KANSAS DRAWN BY *EHE*
 HORIZ. SCALE 1"=20'
 VERT. SCALE 1"=2'

