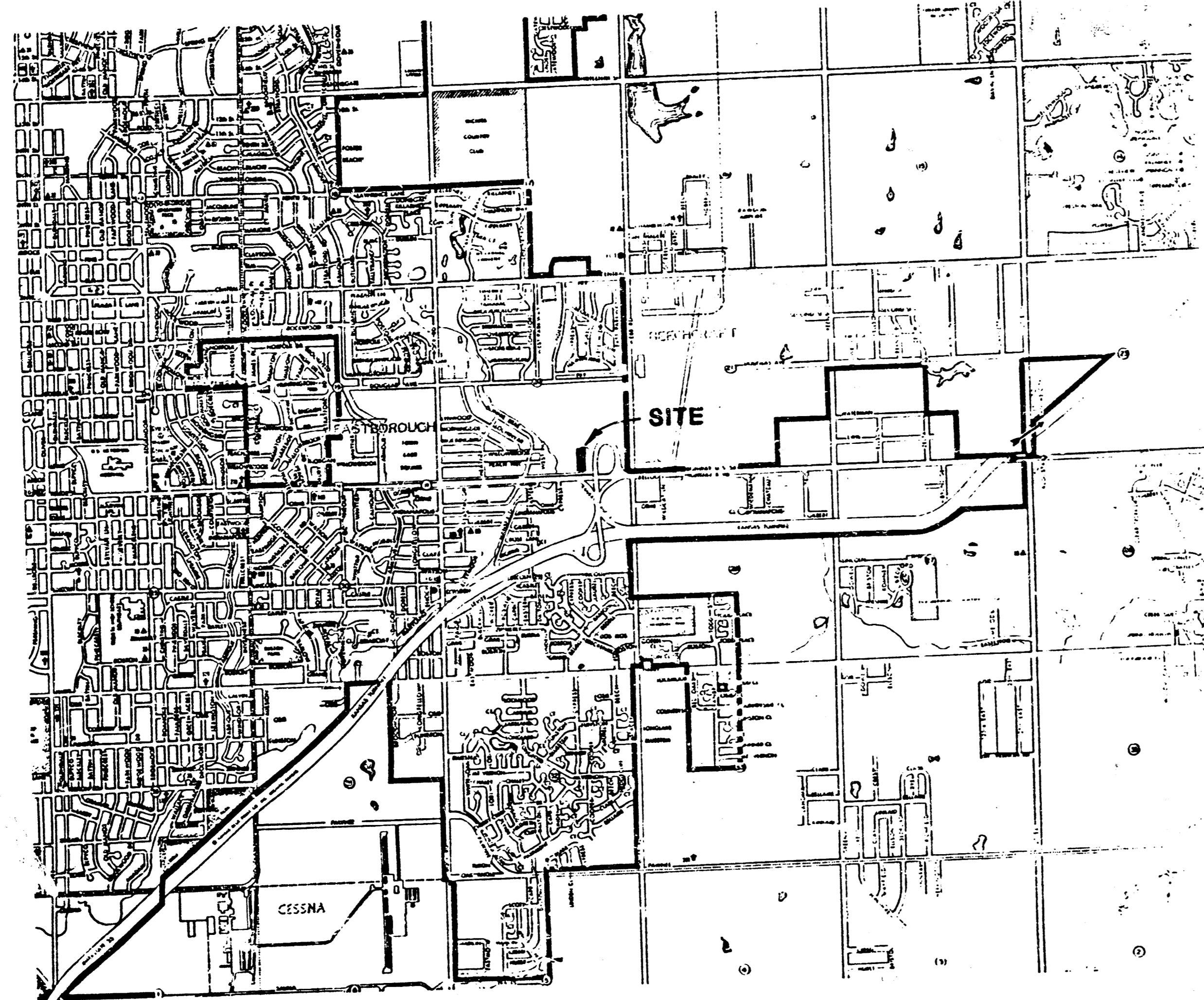
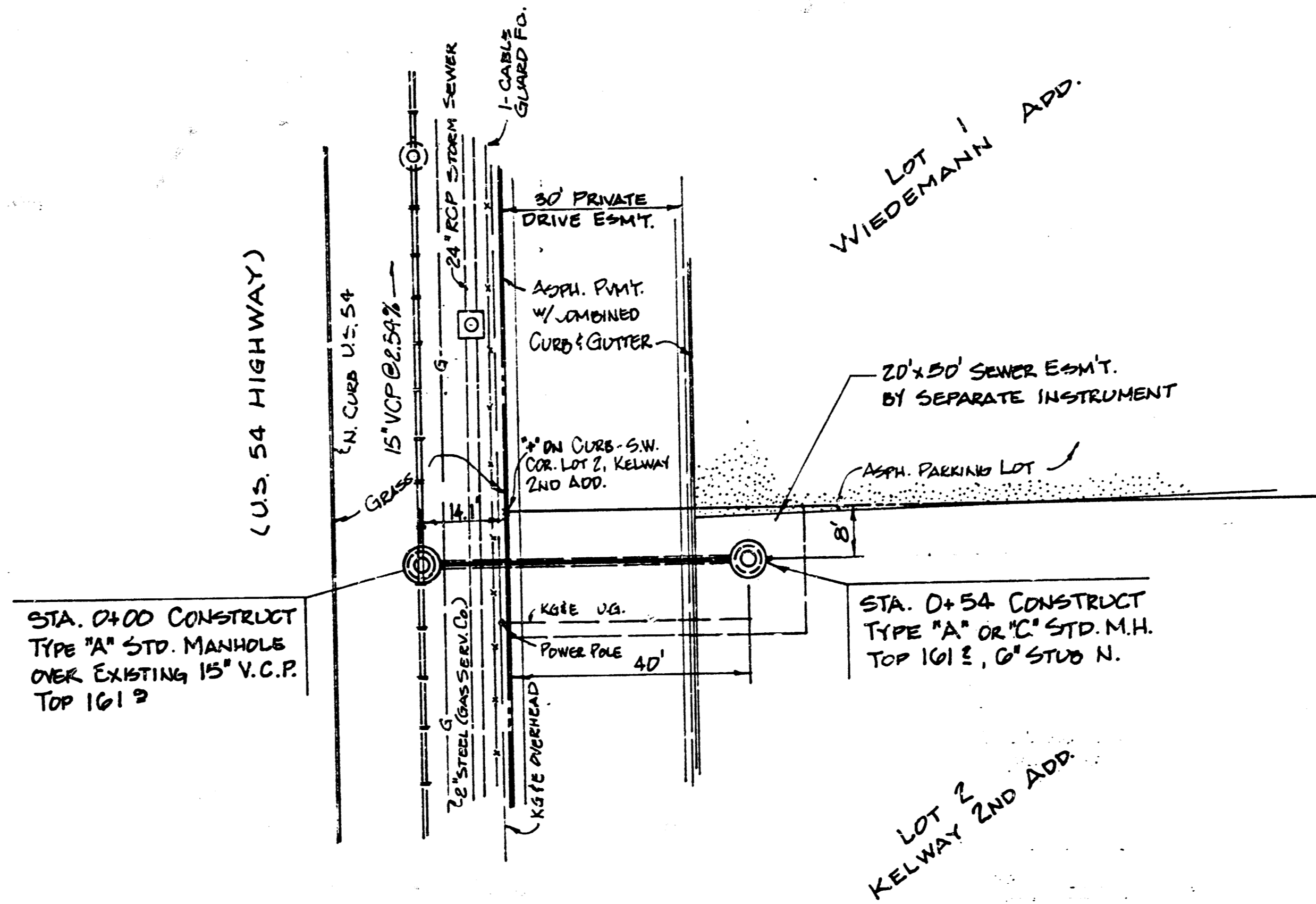


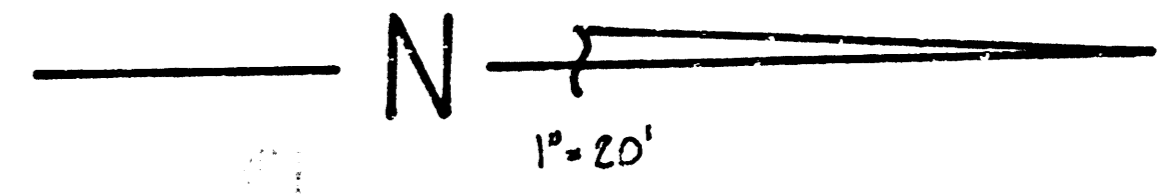
DATE: \_\_\_\_\_ BY: \_\_\_\_\_  
 PLAN  
 SURVEYED, DRAWN, CHECKED, DESIGNED, DATE, BY, NO.  
 NOTE BOOK NO. \_\_\_\_\_



VICINITY MAP



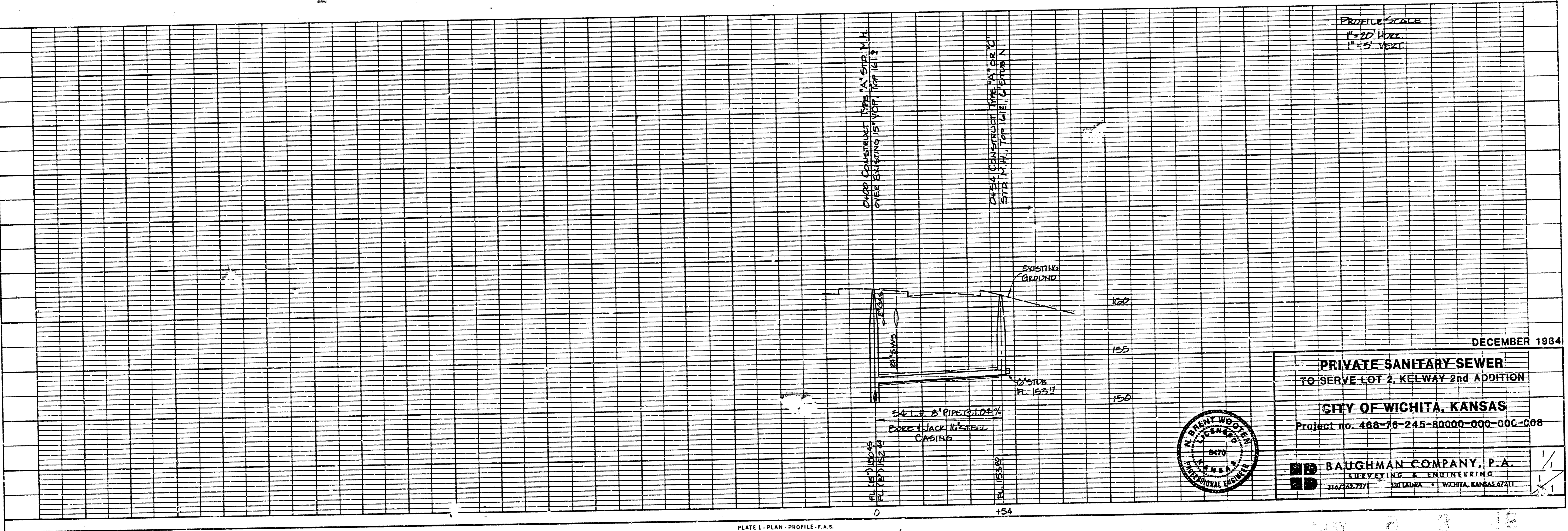
BENCH MARK - "I" ON TOP OF CURB @ S.W. COR. LOT 2, KELWAY 2ND ADD., ELEV. 161.47



APPROVED AS NOTED  
 By CITY ENGINEER OF WICHITA  
 Sanitary Sewers DOB 12/6/84  
 Storm Sewers \_\_\_\_\_  
 Driveway Approaches \_\_\_\_\_

NOTE TO CONTRACTOR  
 This project will be constructed under the supervision of the CITY ENGINEER and conforming to the SPECIFICATIONS of the CITY OF WICHITA. The CONTRACTOR will prepay the City of Wichita for all costs of Inspection.

DATE: \_\_\_\_\_ BY: \_\_\_\_\_  
 PROFILE  
 SURVEYED, DRAWN, CHECKED, DESIGNED, DATE, BY, NO.  
 NOTE BOOK NO. \_\_\_\_\_

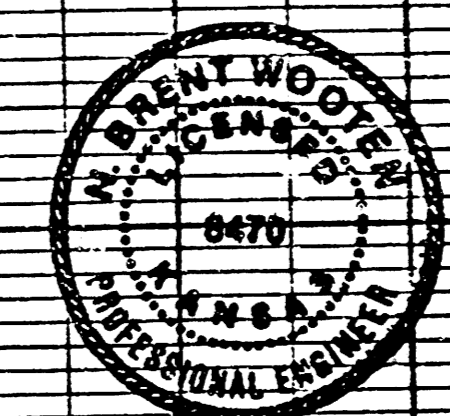


PROFILE SCALE  
 1" = 20' HORIZ.  
 1" = 2' VERT.

DECEMBER 1984

**PRIVATE SANITARY SEWER**  
 TO SERVE LOT 2, KELWAY 2nd ADDITION  
**CITY OF WICHITA, KANSAS**  
 Project no. 488-76-245-80000-000-000-008

**BAUGHMAN COMPANY, P.A.**  
 SURVEYING & ENGINEERING  
 314/245-7271 1311 ALBANY • WICHITA, KANSAS 67211



FILMED FROM THE BEST AVAILABLE COPY.....