

SANITARY SEWER EXTENSIONS

&

PUMPING STATION

SERVING

KINKAID PARK THIRD ADDITION

WICHITA, KANSAS

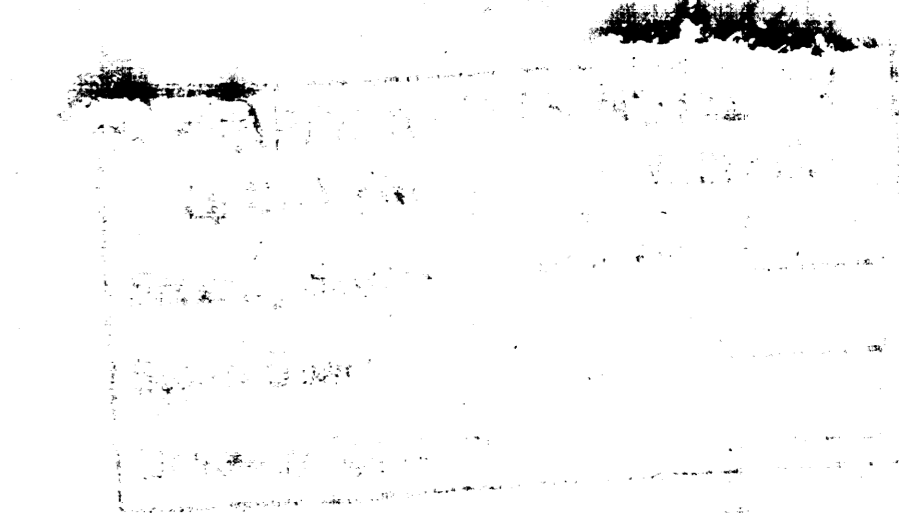
MOHRING & ASSOCIATES

CONSULTING ENGINEERS

WICHITA

1976

PRIVATE PROJECT NO. DBKW 706026



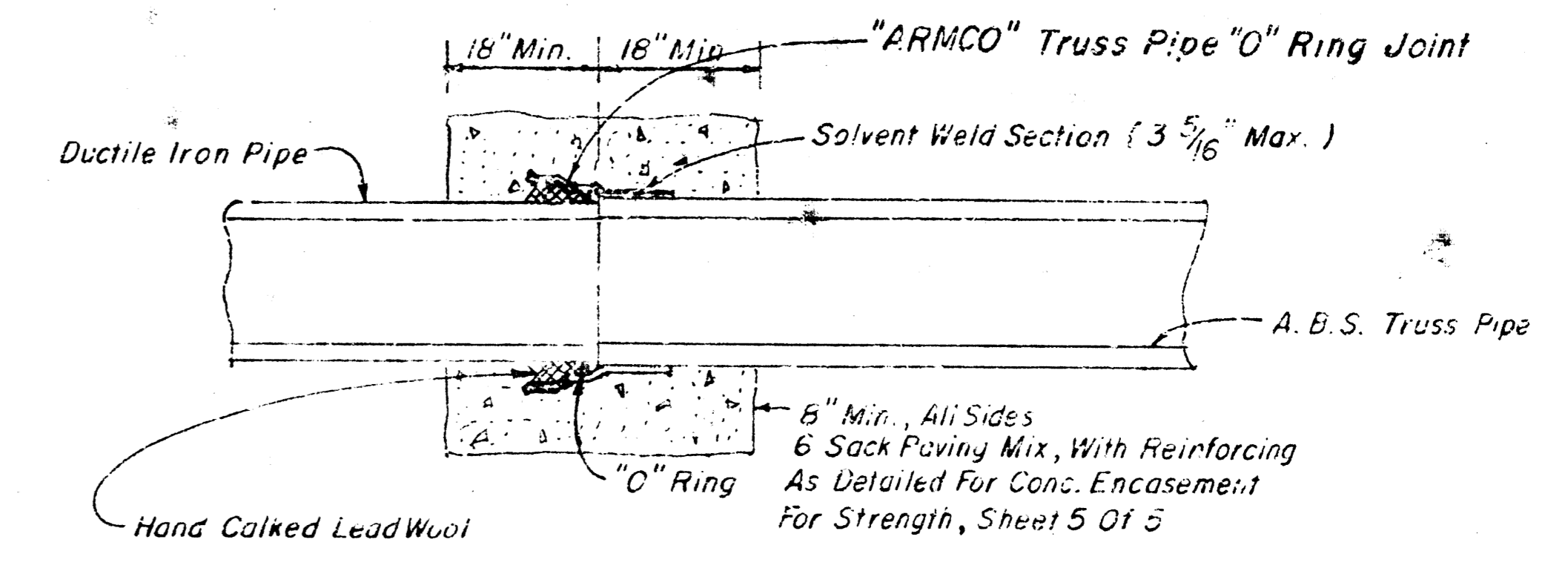
INDEX

<u>SHEET NO.</u>	<u>DESCRIPTION</u>
1	TITLE SHEET
2 & 3	PLAN & PROFILE
4	PUMPING STATION DETAILS
5	SEWER APPURTENANCES

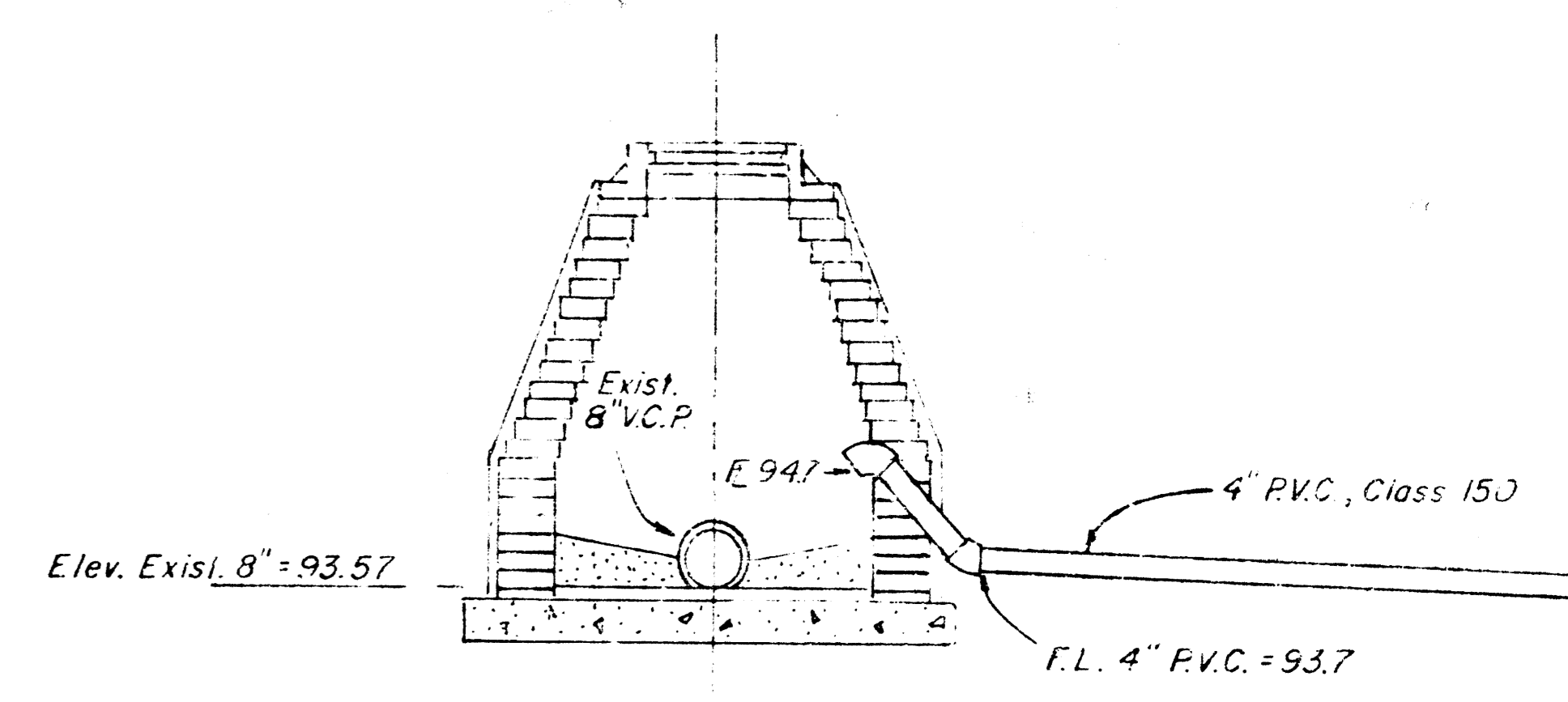




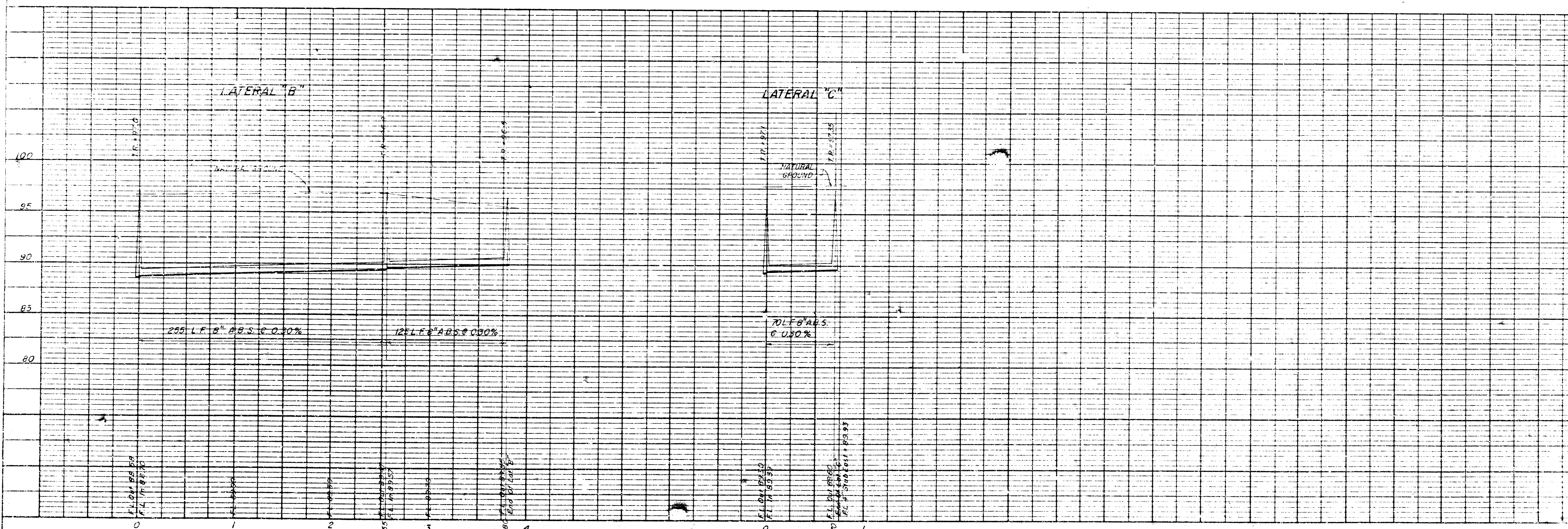
NOTE - See Sheet 2 of 5 For Plan Of Orientation  
And Horizontal Control For Laterals "B" & "C"

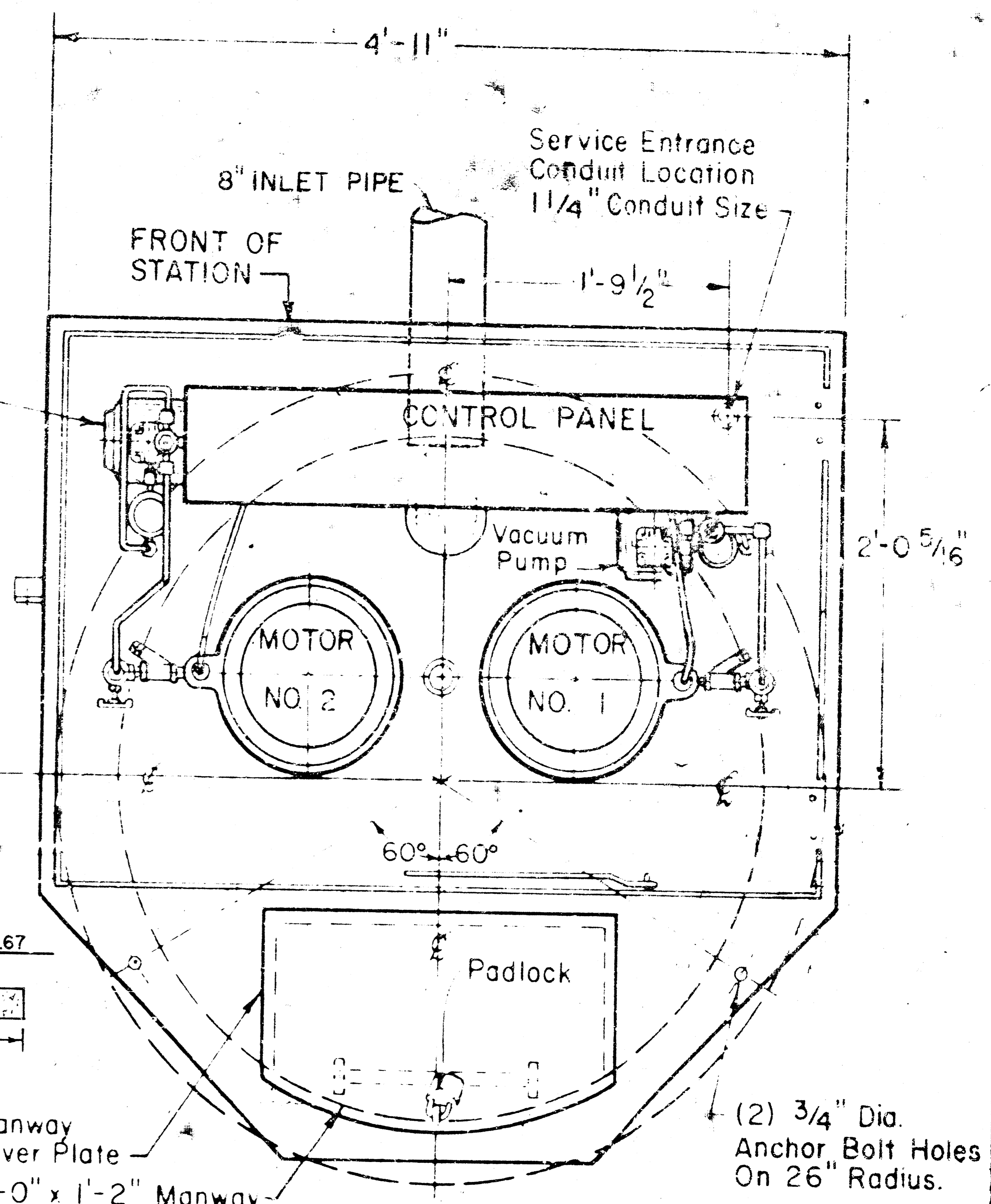
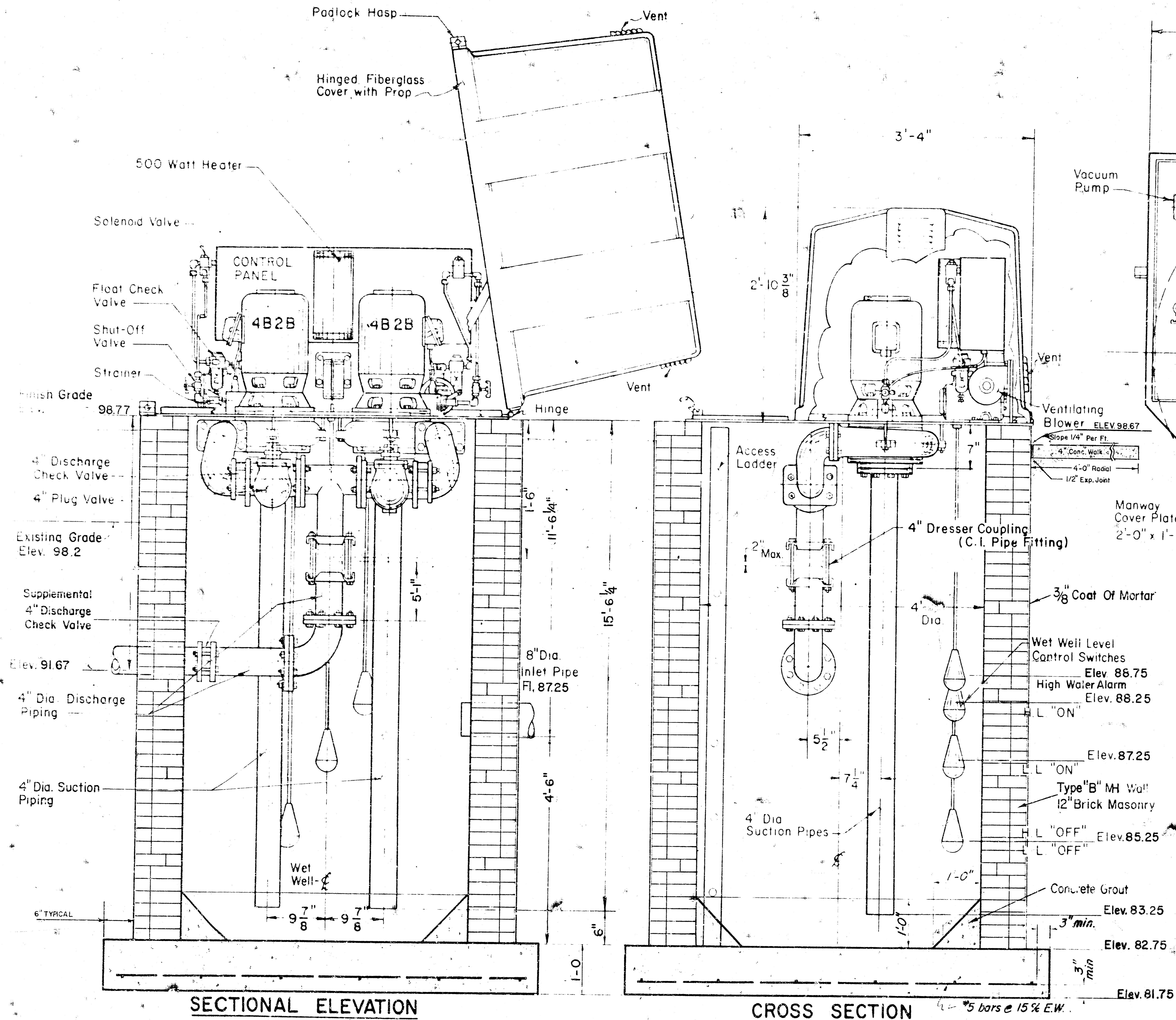


JOINT DETAIL  
DUCTILE IRON TO A.B.S PIPE



DETAIL  
Force Main Discharge Into  
Existing M.H.  
Located Approx. 5' South & 263' West Of N.E. Corner  
Lot 1, Kinkaid Park 2nd Add.





Manhole To Be Type "B" Construction Without Tapered Section

Lift Station to be furnished with Power Failure & High Water Alarm, to be connected to City of Wichita Alarm System.

Furnish running time merer, 115v, 60Hz, for each pump w/flush mounted register on control panel.

All influent and effluent pipe to be C.I. to a point, at least 5' beyond excavation for Pumping Station.

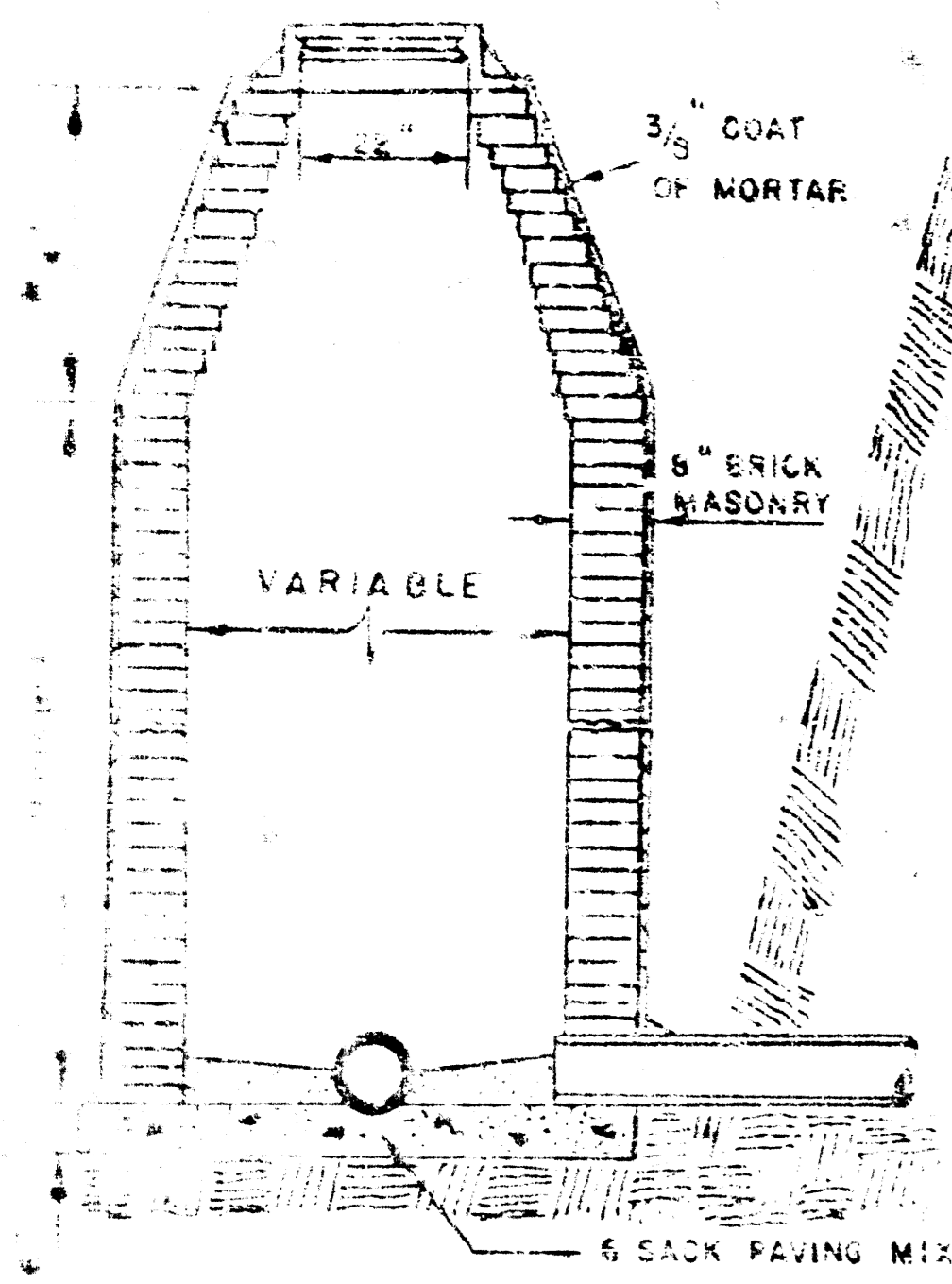
**WET WELL-MOUNTED SEWAGE PUMPING STATION**

KINKAID PARK THIRD ADDITION

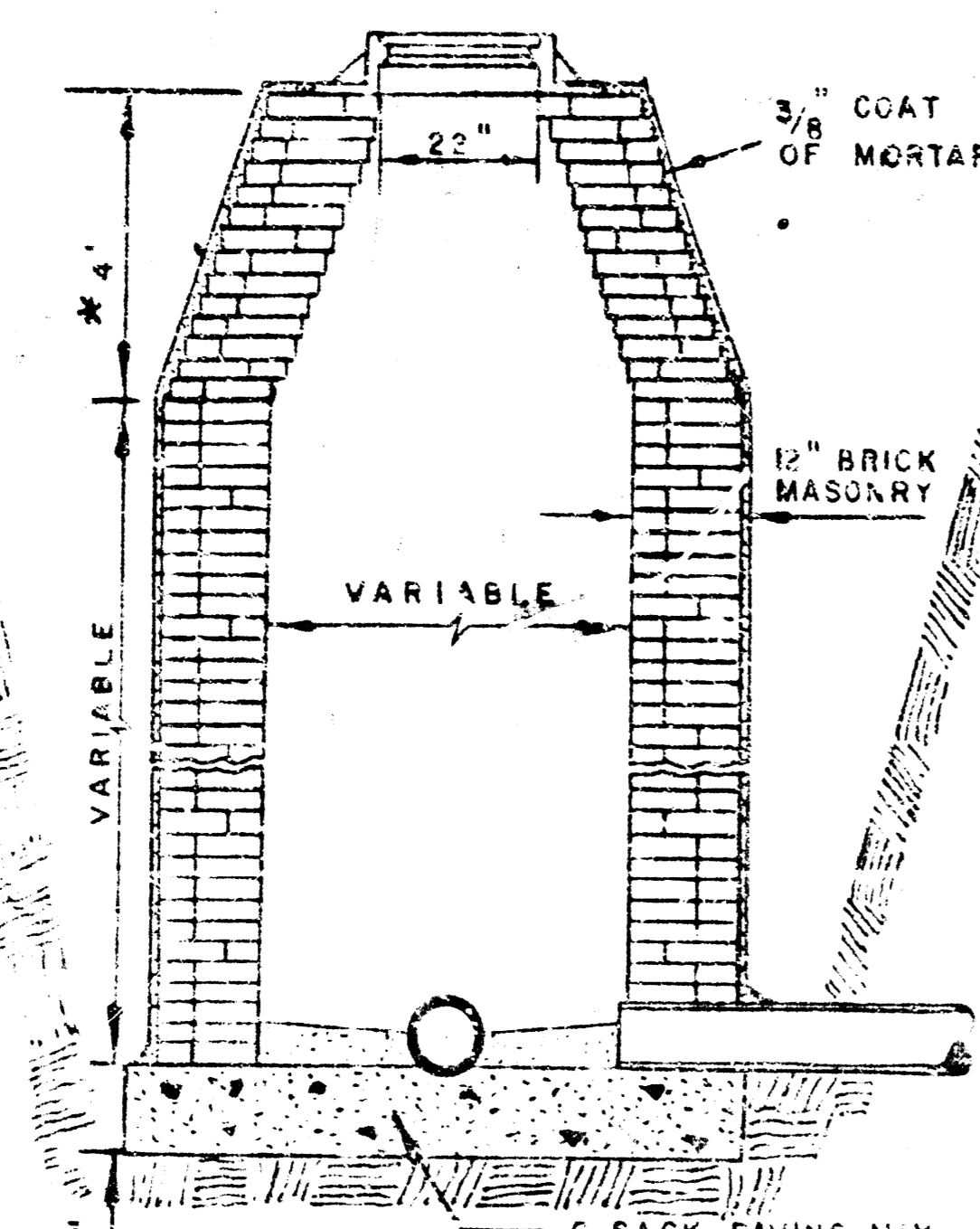
PRIVATE PROJECT NO. DBKW 706026

Moehring & Associates Consulting Engineers  
Wichita

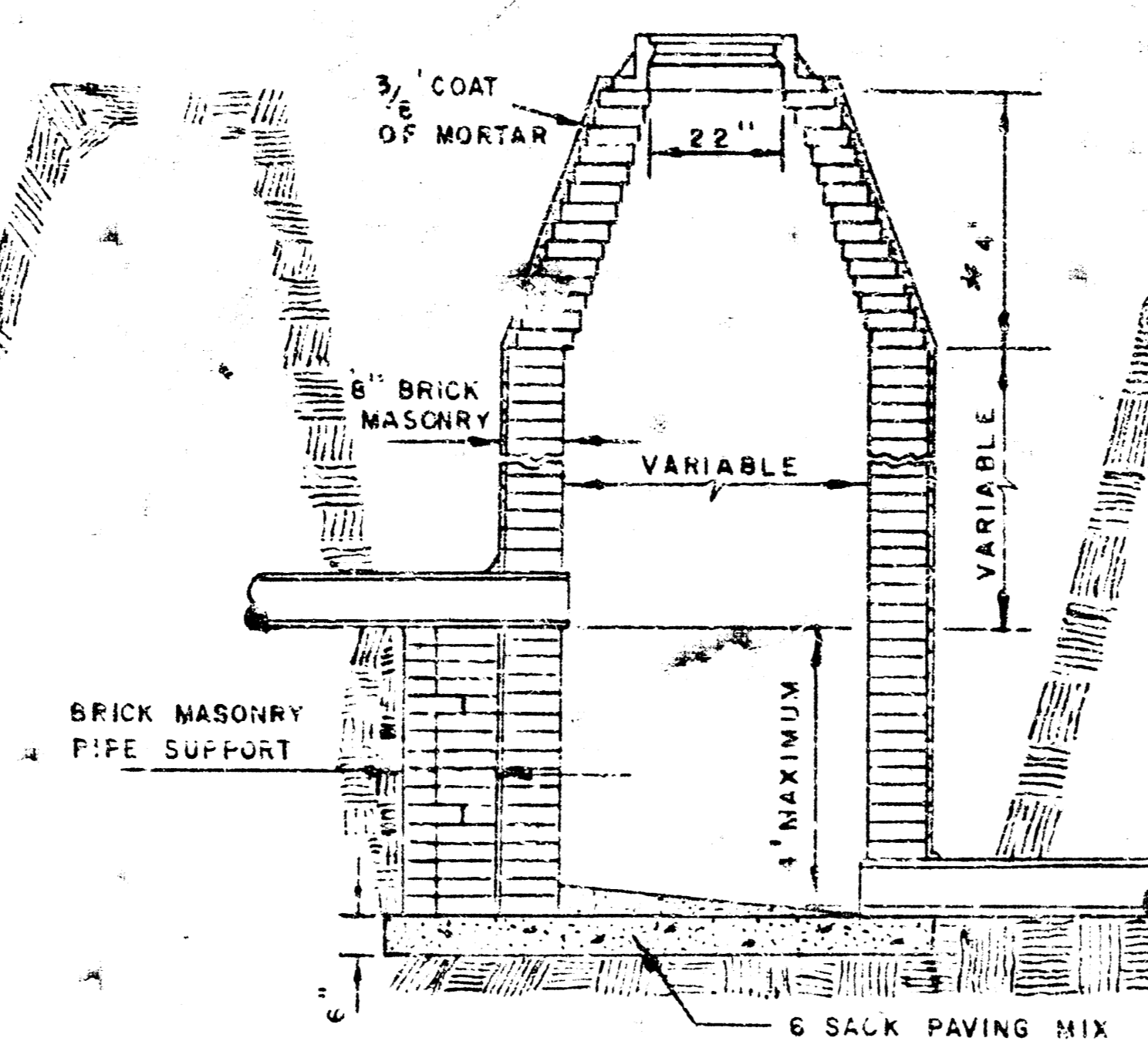
NOT TO SCALE



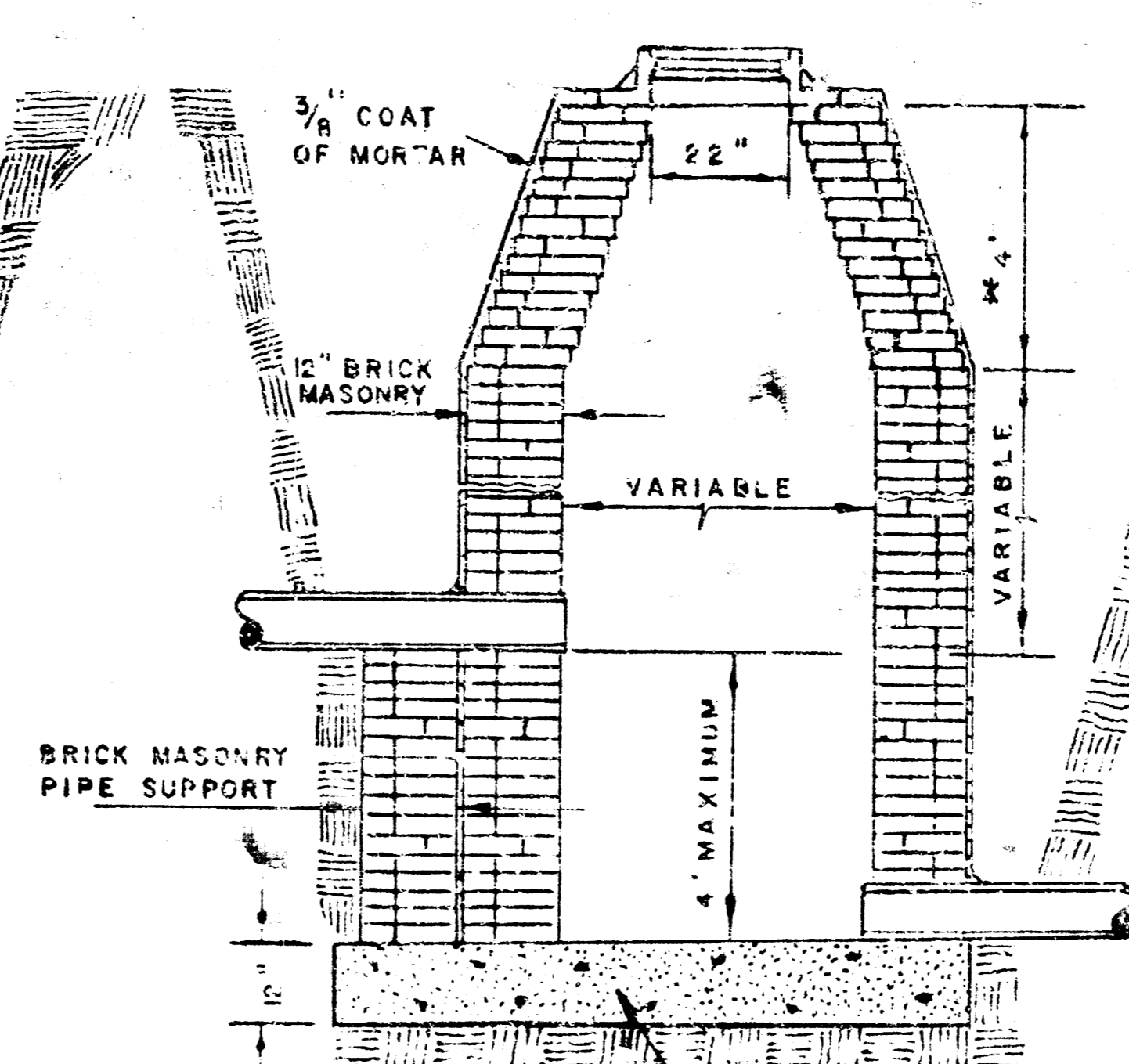
STANDARD MANHOLE  
TYPE "A"



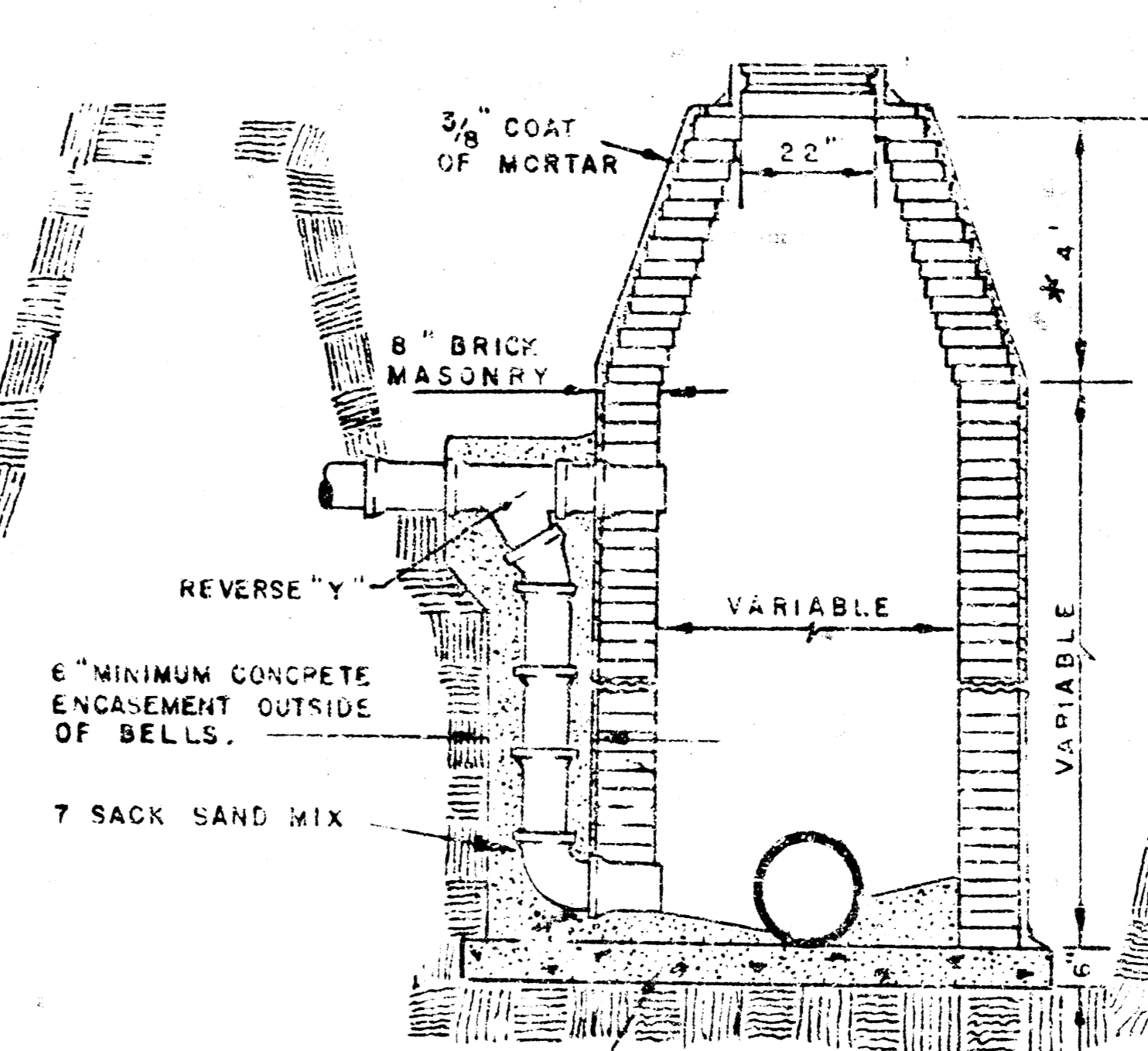
STANDARD MANHOLE  
TYPE "B"



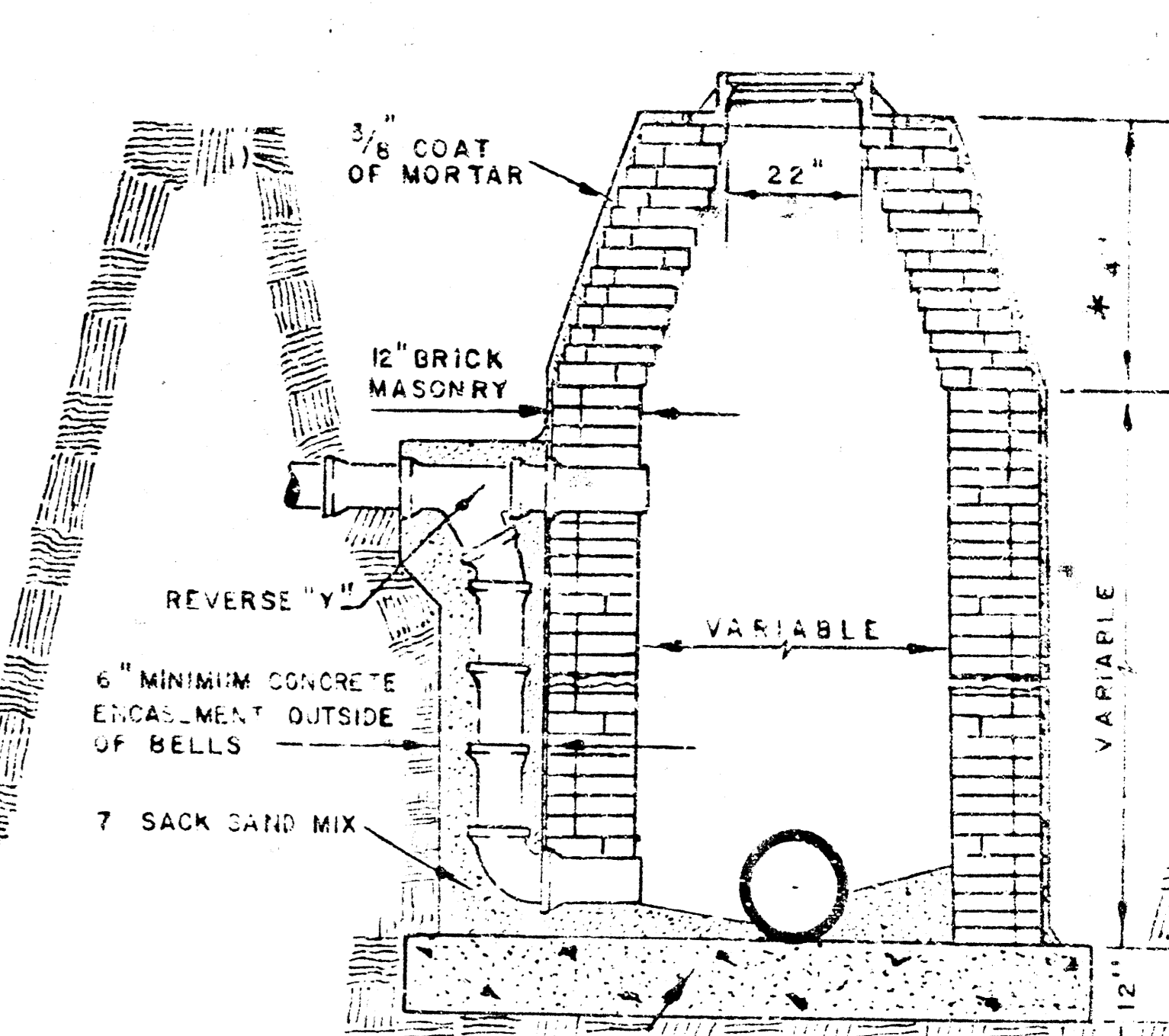
DROP MANHOLE  
TYPE "A"



DROP MANHOLE  
TYPE "B"

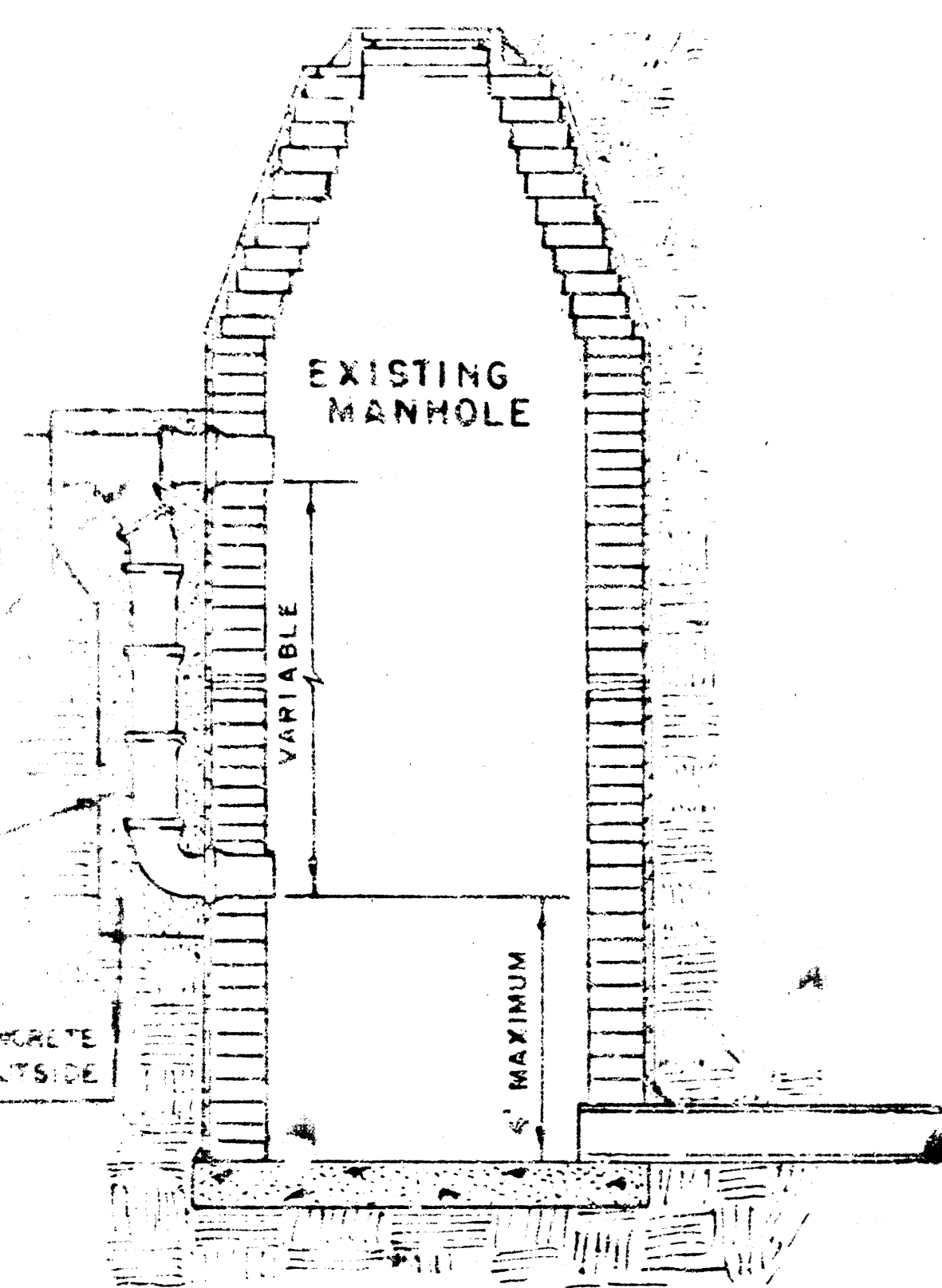


OUTSIDE DROP MANHOLE  
TYPE "A"

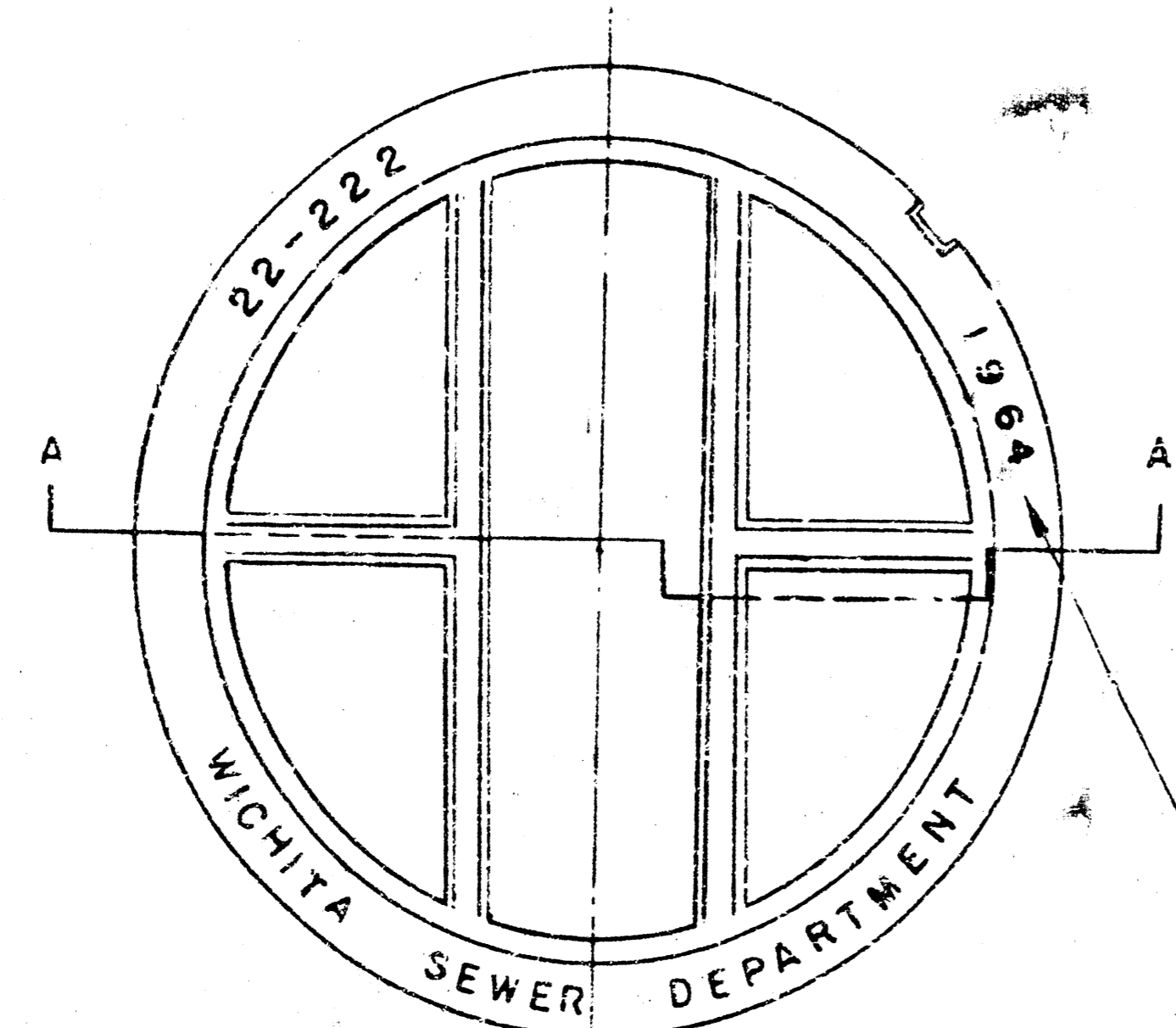


OUTSIDE DROP MANHOLE  
TYPE "B"

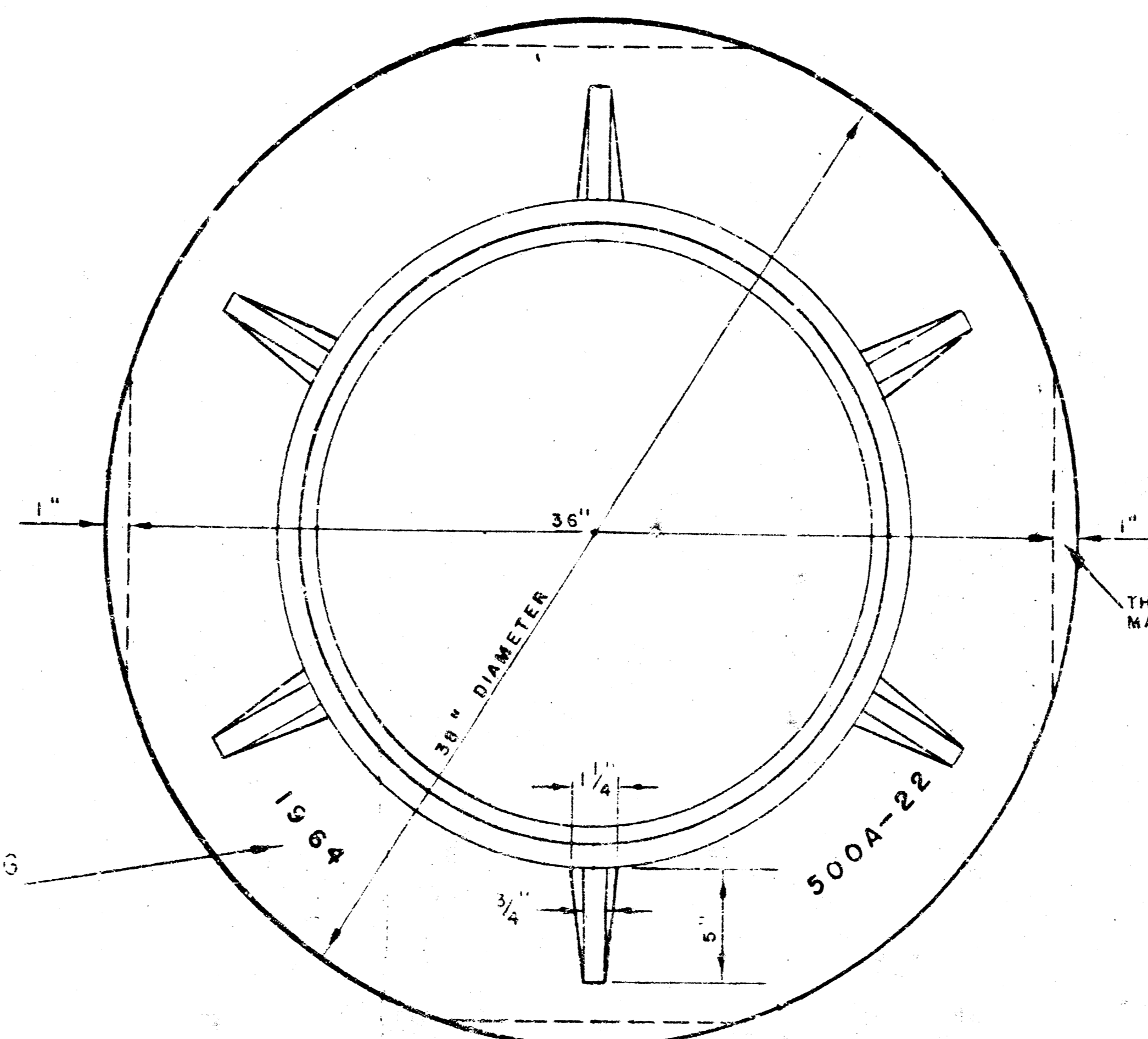
\* DRAW = 6' ON 5' DIA. M.H.



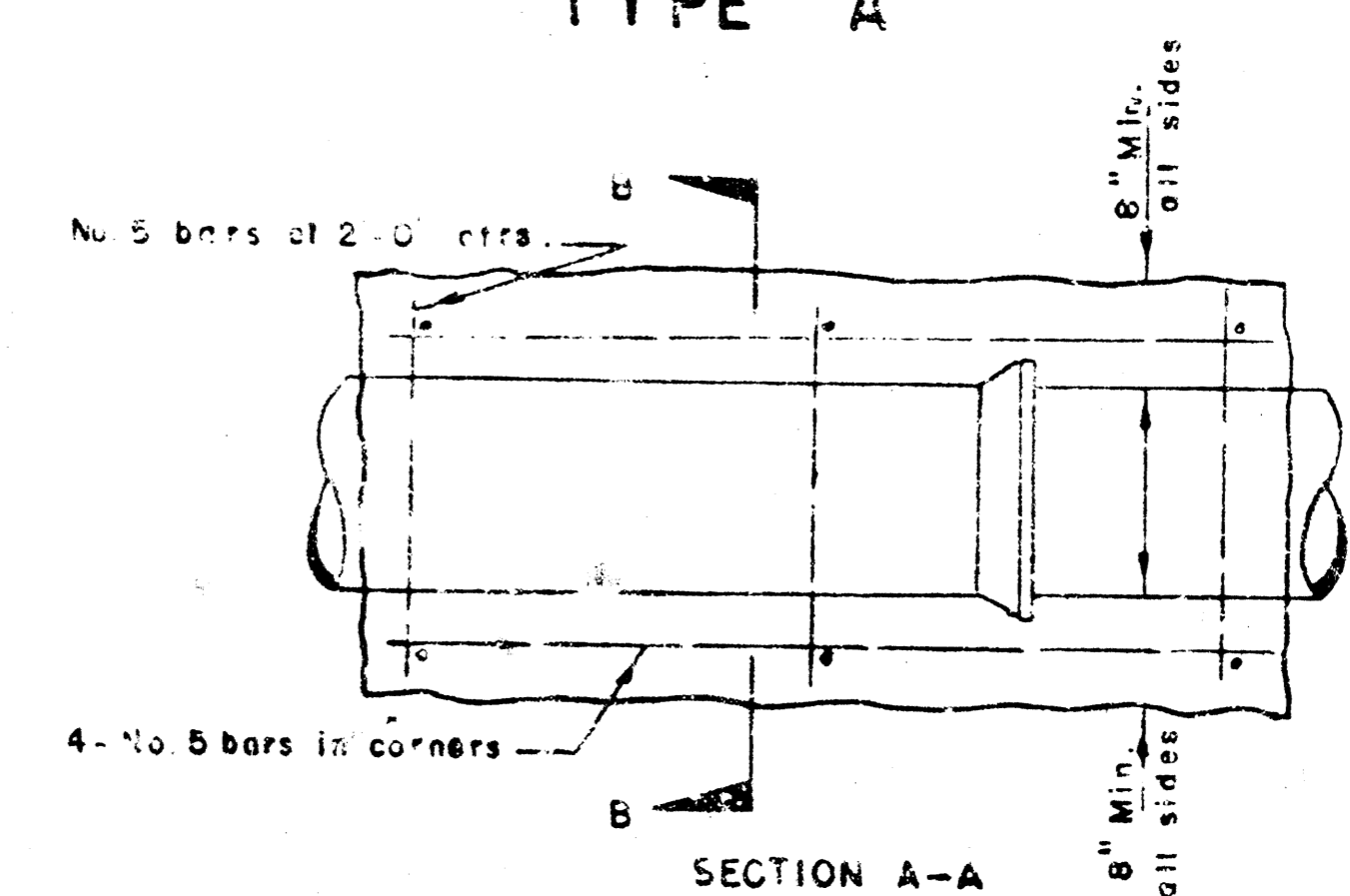
DETAIL OF DROP STACK  
FOR EXISTING MANHOLES IN GROUND WATER



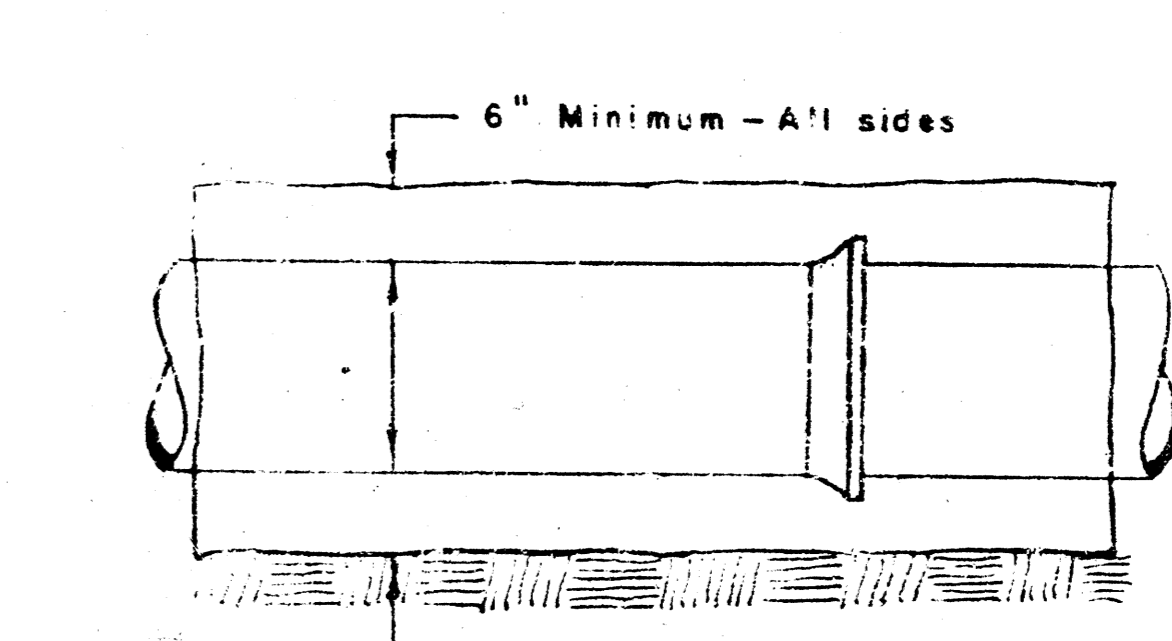
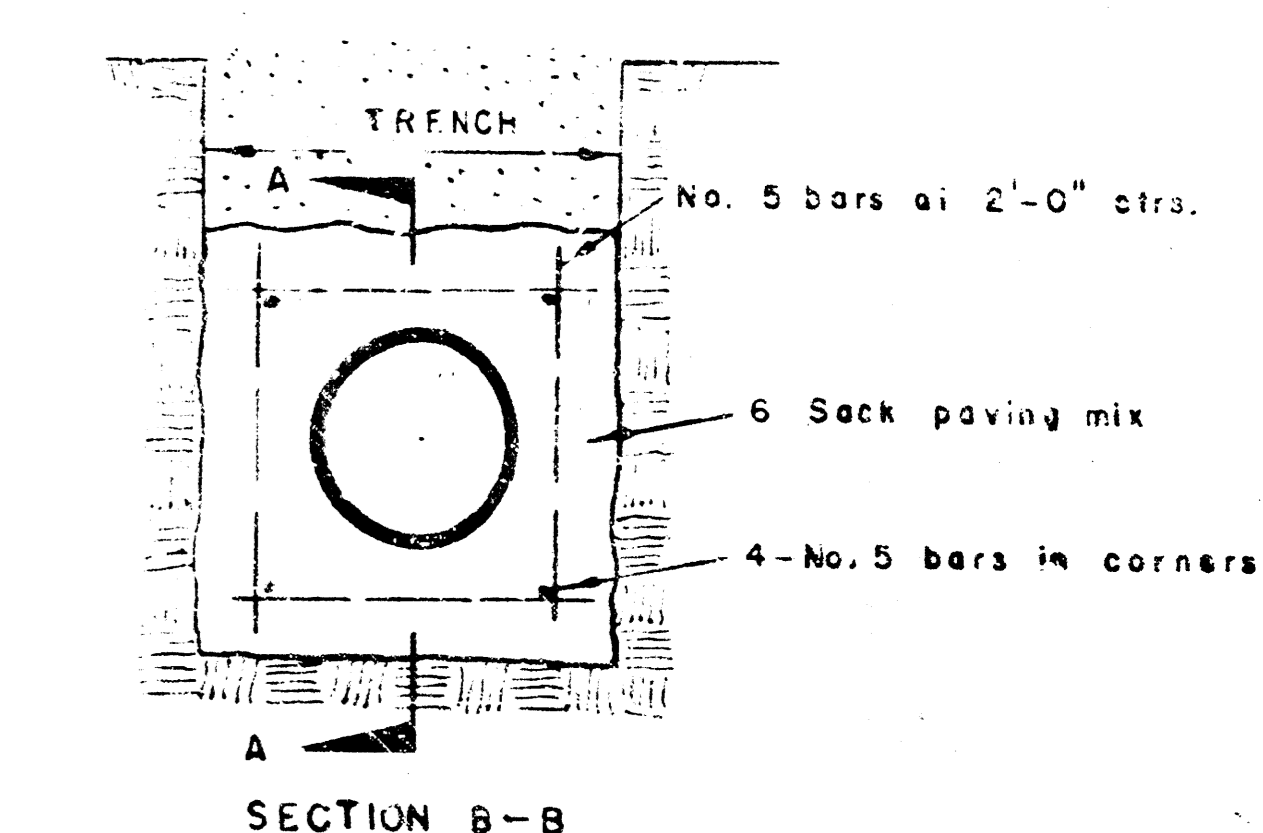
TOP VIEW  
MANHOLE COVER  
WEIGHT 110 lbs.



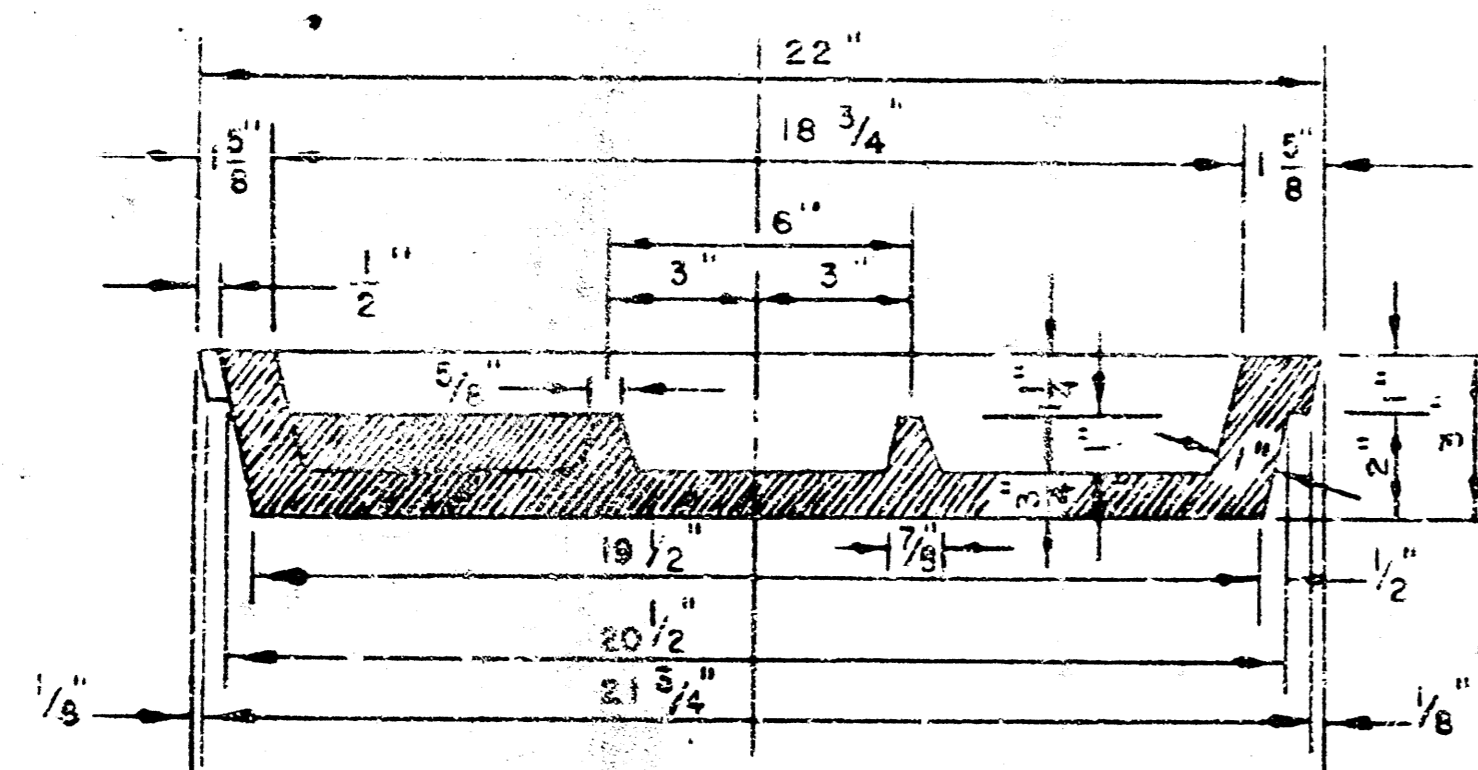
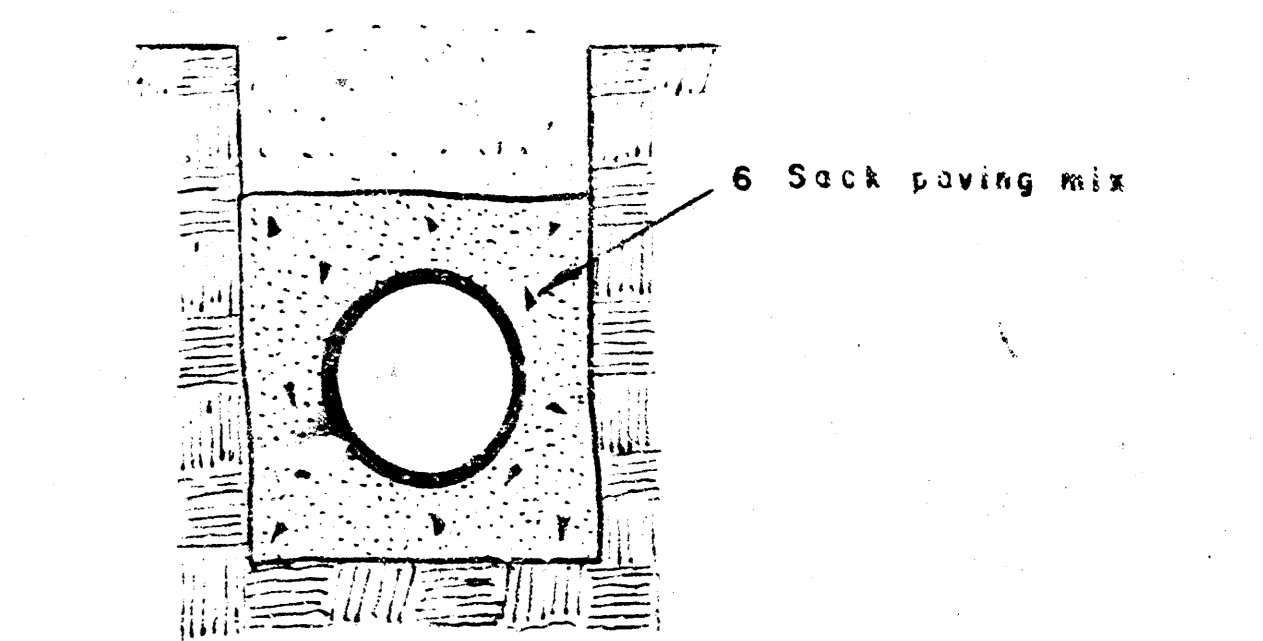
TOP VIEW  
MANHOLE RING  
WEIGHT 555 lbs.



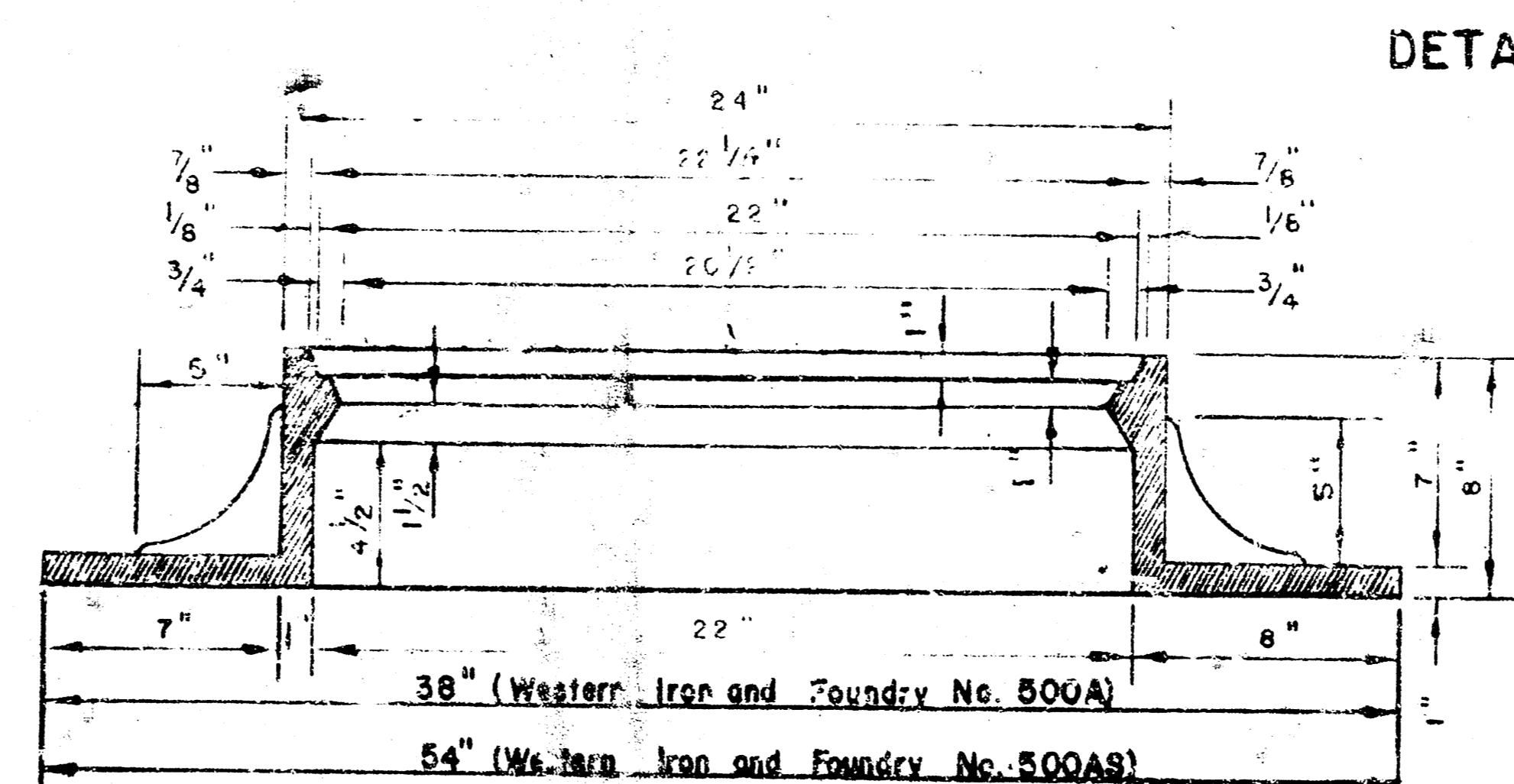
SECTION A-A  
REINFORCED CONCRETE ENCASEMENT  
FOR STRENGTH



SECTION B-B  
CONCRETE ENCASEMENT  
FOR COVER

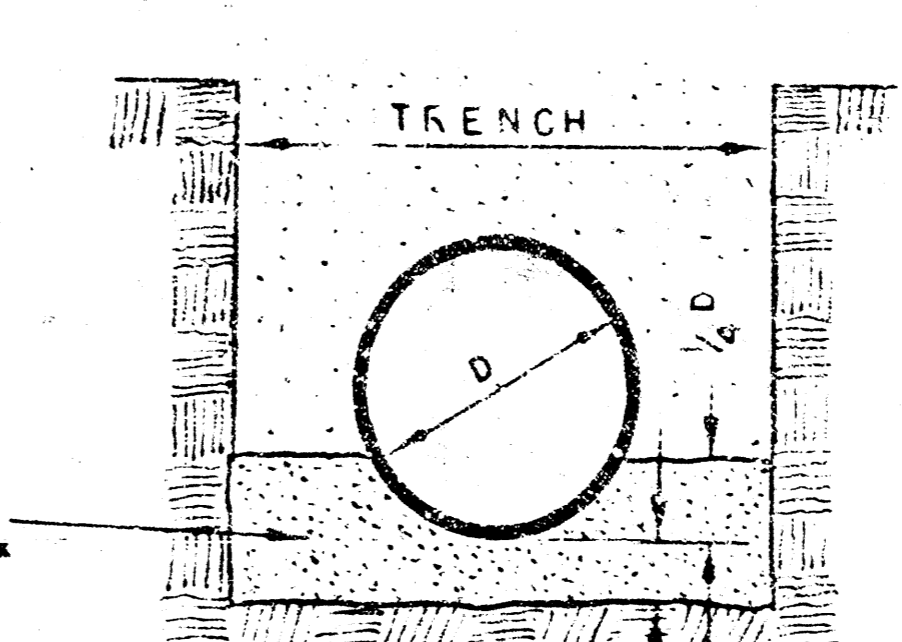


SECTION A-A  
MANHOLE COVER

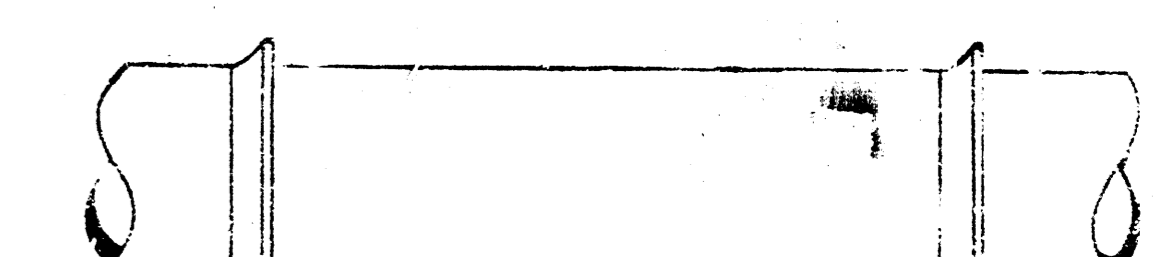


SECTION  
MANHOLE RING

OUTSIDE CIRCUMFERENCE OF COVER  
AND THE INNER RING AND SEAT SET



DETAIL OF CONCRETE CRADLE



ORDINARY BEDDING METHOD  
FOR CLAY PIPE

MANHOLES

THE CONCRETE USED FOR MORTAR IN MANHOLES SHALL CONTAIN 8 SACKS OF CEMENT PER CUBIC YARD.  
STANDARD MANHOLES AND DROP MANHOLES, REGARDLESS OF DIAMETER, SHALL BE BID AT ONE PRICE AS STANDARD MANHOLES.  
SINGLE OR DOUBLE OUTSIDE DROP MANHOLES SHALL BE BID AT ONE PRICE AS OUTSIDE DROP MANHOLES.  
ALL MANHOLES WITH PIPES LARGER THAN 24" SHALL BE 5' DIAMETER UNLESS OTHERWISE SPECIFIED ON PLAN. ALL M.H.'S

DETAILS OF  
SEWER APPURTENANCE  
ADOPTED AS STANDARD DESIGN  
BY  
ENGINEERING DIVISION