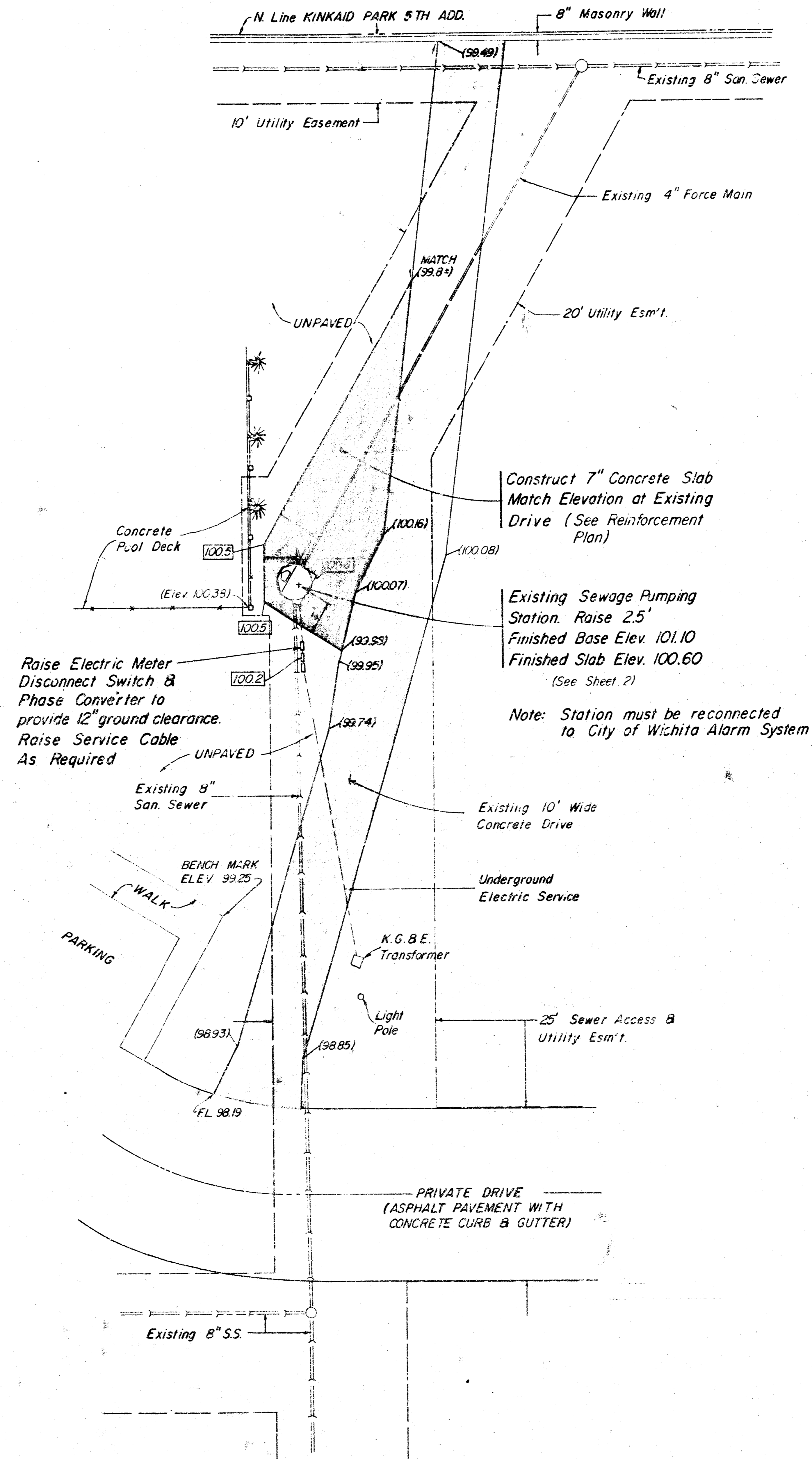
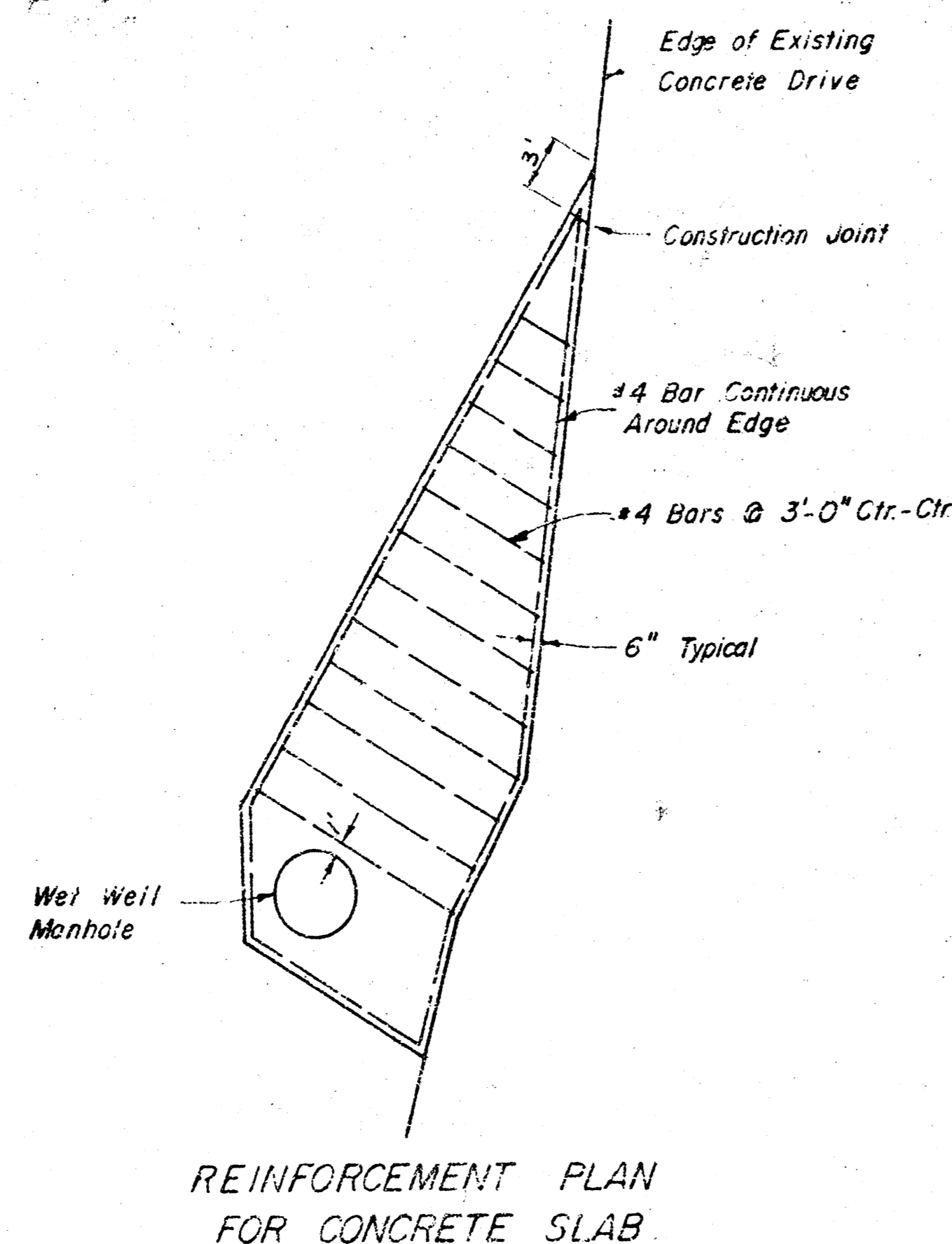


**MODIFICATIONS TO
SEWAGE PUMPING STATION
KINKAID PARK FIFTH ADDITION
WICHITA, KANSAS**

City of Wichita Private Project No.
468-76-245-80000-000-000-008
February 1982



N
1" = 10'
(100.01) = Existing-Finished Elev.
(100.0) = Finished Elev.

BENCH MARK:
"B" on slab S of Pump Station
Housing Elev 98.20
N.E. Cor Conc Walk S of
Pump Station Elev 99.25
City of Wichita Datum

Moehring & Associates
Consulting Engineers
Wichita
82-013-P

