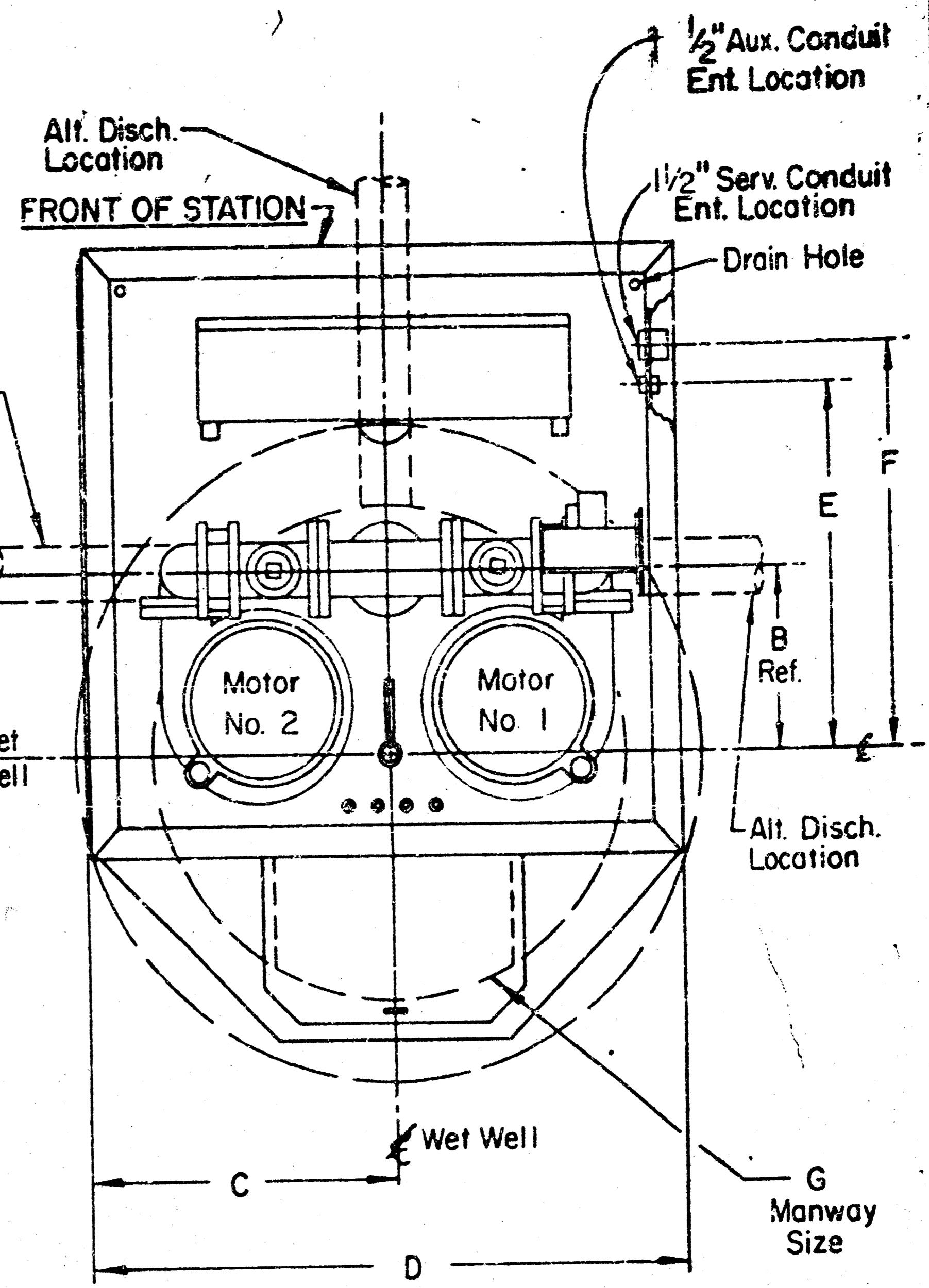


APPROVED AS SHOWN
BY CITY ENGINEER
Contract No. _____
Wastewater
Drawings No. _____

NOTE TO CONTRACTOR
This project will be constructed under the supervision of the CITY ENGINEER and conforming to the SPECIFICATIONS of the CITY OF WICHITA. The CONTRACTOR shall maintain the City of Wichita for the cost of any additional work and inspection.

WET WELL DIAMETER	DIM. A	DIM. B	DIM. C	DIM. D	DIM. E	DIM. F	MANWAY G
4'-0"	4"	15 13/16"	33 3/4"	66"	27 7/8"	32 3/8"	14" x 24"
5'-0"	8"	19 13/16"	34"	68"	33 3/8"	37 7/8"	24 1/2" x 28"
6'-0"	2"	13 3/16"	40"	80"	27 3/8"	31 7/8"	24 1/2" x 28"



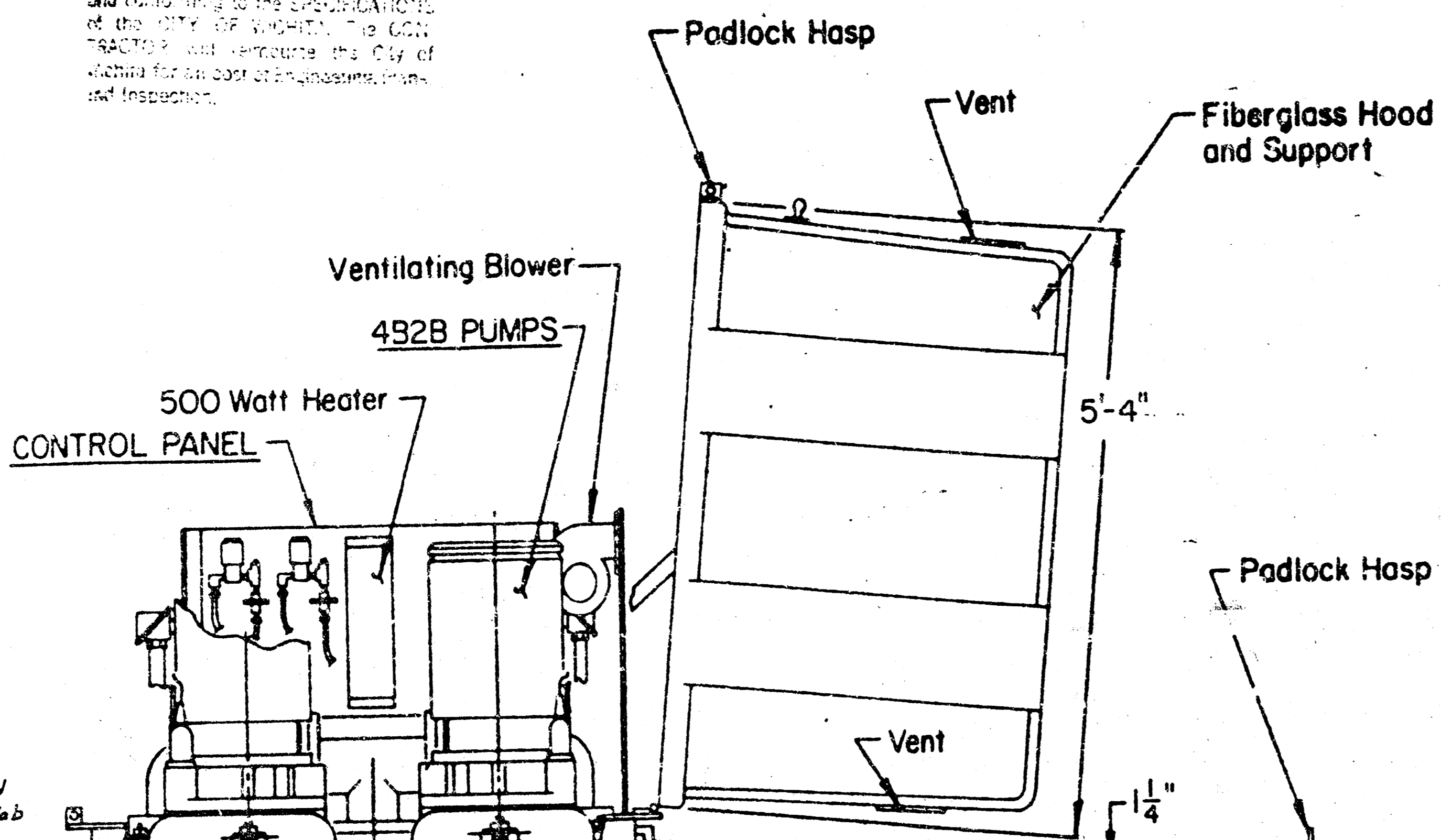
PLAN VIEW
MACH. CHAMBER
(Shown Less Cover)

NOTES:

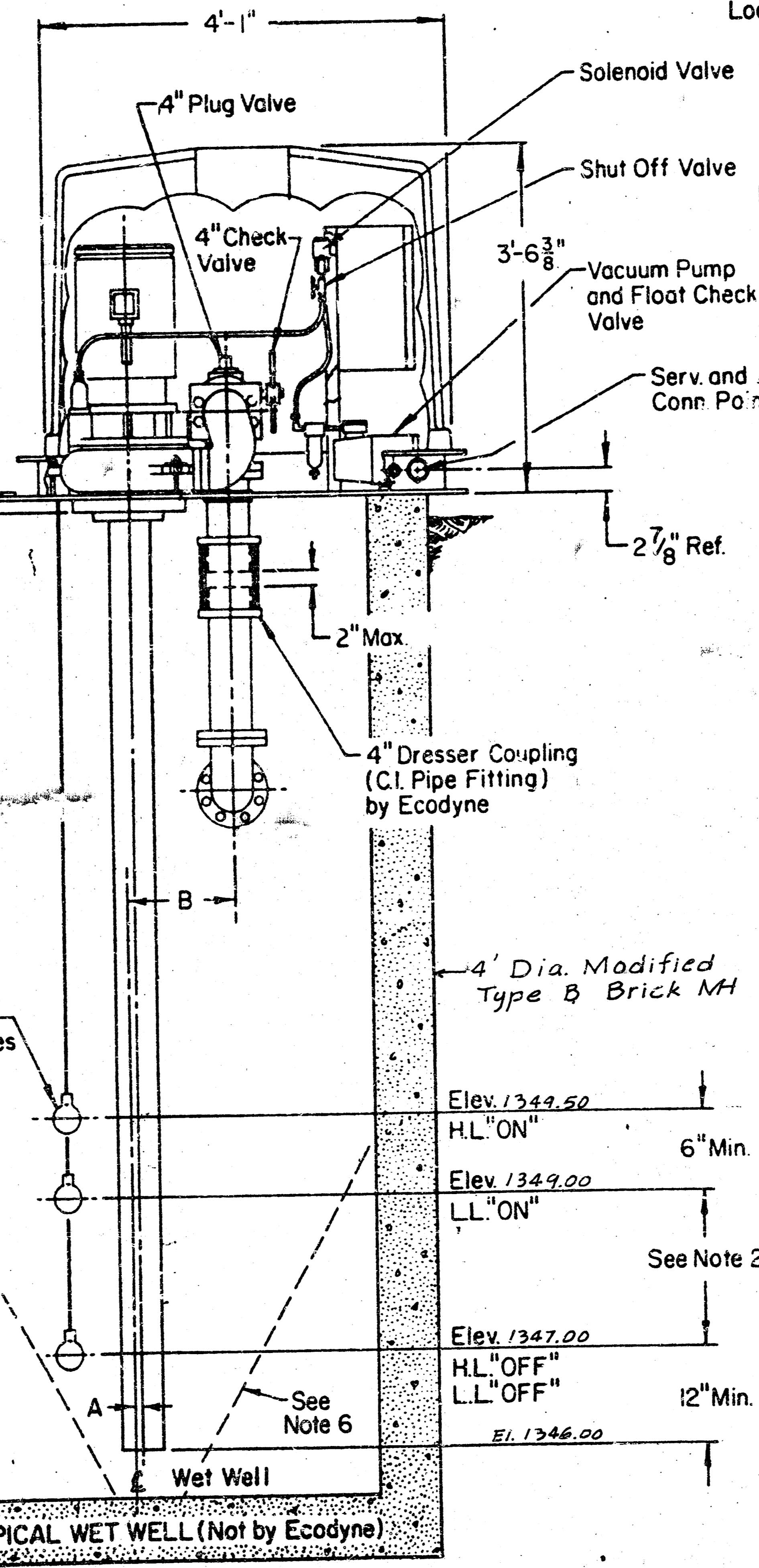
- Maximum Capacity - 300 G.P.M.
- Volume In Gallons Between L.L. "ON" and L.L. "OFF" Should Equal Pumping Rate in G.P.M.
- If End of Discharge Line is Below Elevation of Discharge Line at Point of Leaving Wet Well, Consult Factory.
- # Discharge Line is Less than 200 Feet in Length, a Check Valve May be Required - Consult Factory. See Sect. Elev. Shall
- Pump Motors - 20 H.P. Maximum.
- Provide 60° Slope in Wet Well - As Required.
- All electrical wiring shall conform to City of Wichita Code.
- Stand by power for lift station shall be provided.
- An alarm system should be provided to warn of malfunction of lift station.

4B2B PUMPS 87D196
THE DESIGN AND DETAIL OF THIS DRAWING IS THE PROPERTY OF ECODYNE CORPORATION AND IS NOT TO BE USED SEPARATELY IN CONNECTION WITH OUR WORK DESIGN AND INVENTION RIGHTS ARE RESERVED. THE NUMBERS AND INCHES INCLUDE UNLESS OTHERWISE NOTED.

DATE	BY	DESCRIPTION
2-79	D. Fisher	DRAWN
2-79	M.E.W.	CHECKED
3-79	C.V.	APPROVED
SCALE none		
ORIGINAL	N78-16	CODE P
FOR		Smith & Loveless Division
WET WELL MOUNTED SEWAGE PUMP LIFT STA. - MODEL "S"		
4" PIPING - 4', 5' & 6' DIA. WELL		
87D196	2	



SECTIONAL ELEVATION



CROSS SECTION

See Exhibit "A" attached to Specs. for concrete slab details around MH
Elev. 1362.0

Elev. 1356.0 (See Note 3)

6" Dia. Disch. Piping (Not By Ecodyne) C.I. Pipe 12' out from E Manhole

4" Suction Pipes (Not By Ecodyne)

8" Dia. inlet Pipe (Not by Ecodyne)

Elev. 1345.50

Elev. 1349.50 H.L. "ON"

Elev. 1349.00 L.L. "ON"

Elev. 1347.00 H.L. "OFF"

Elev. 1346.00 L.L. "OFF"

TYPICAL WET WELL (Not by Ecodyne)