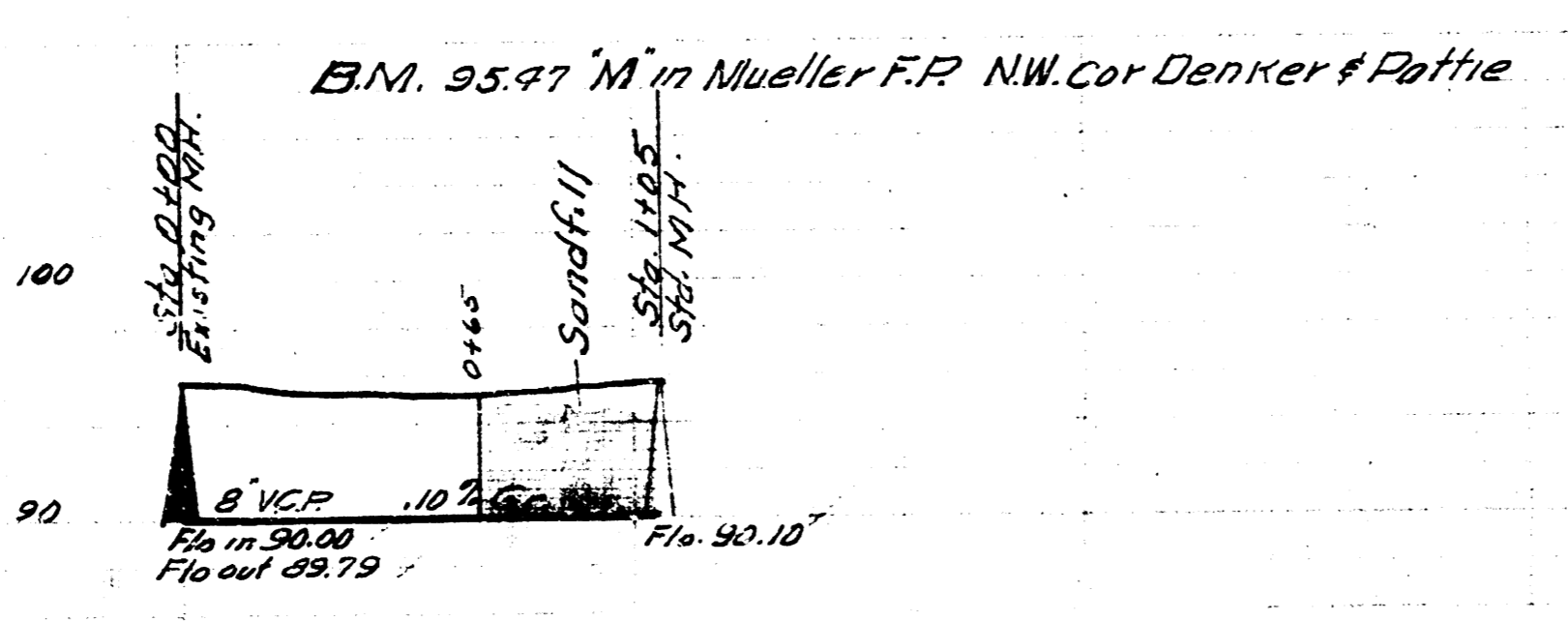
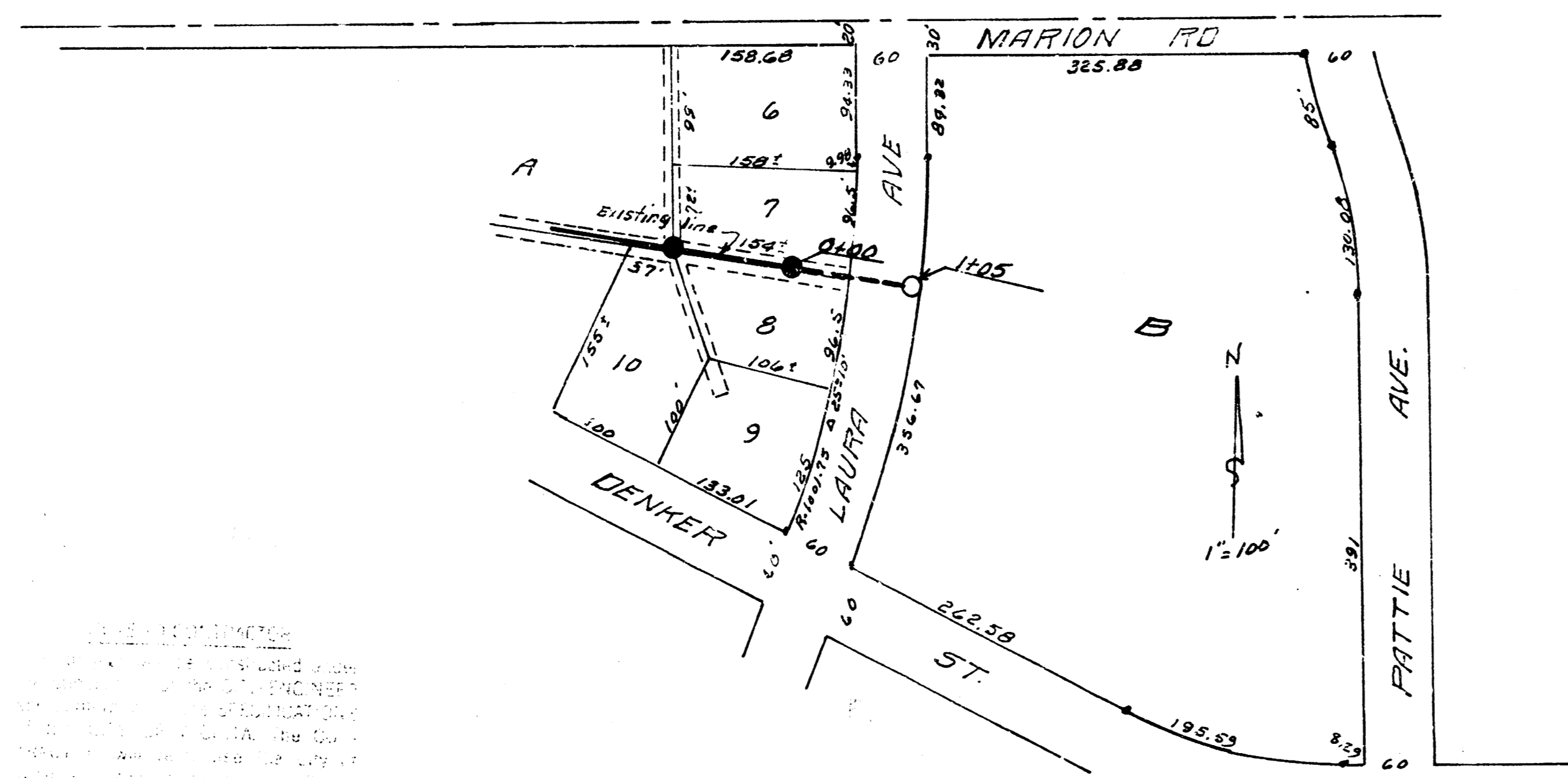
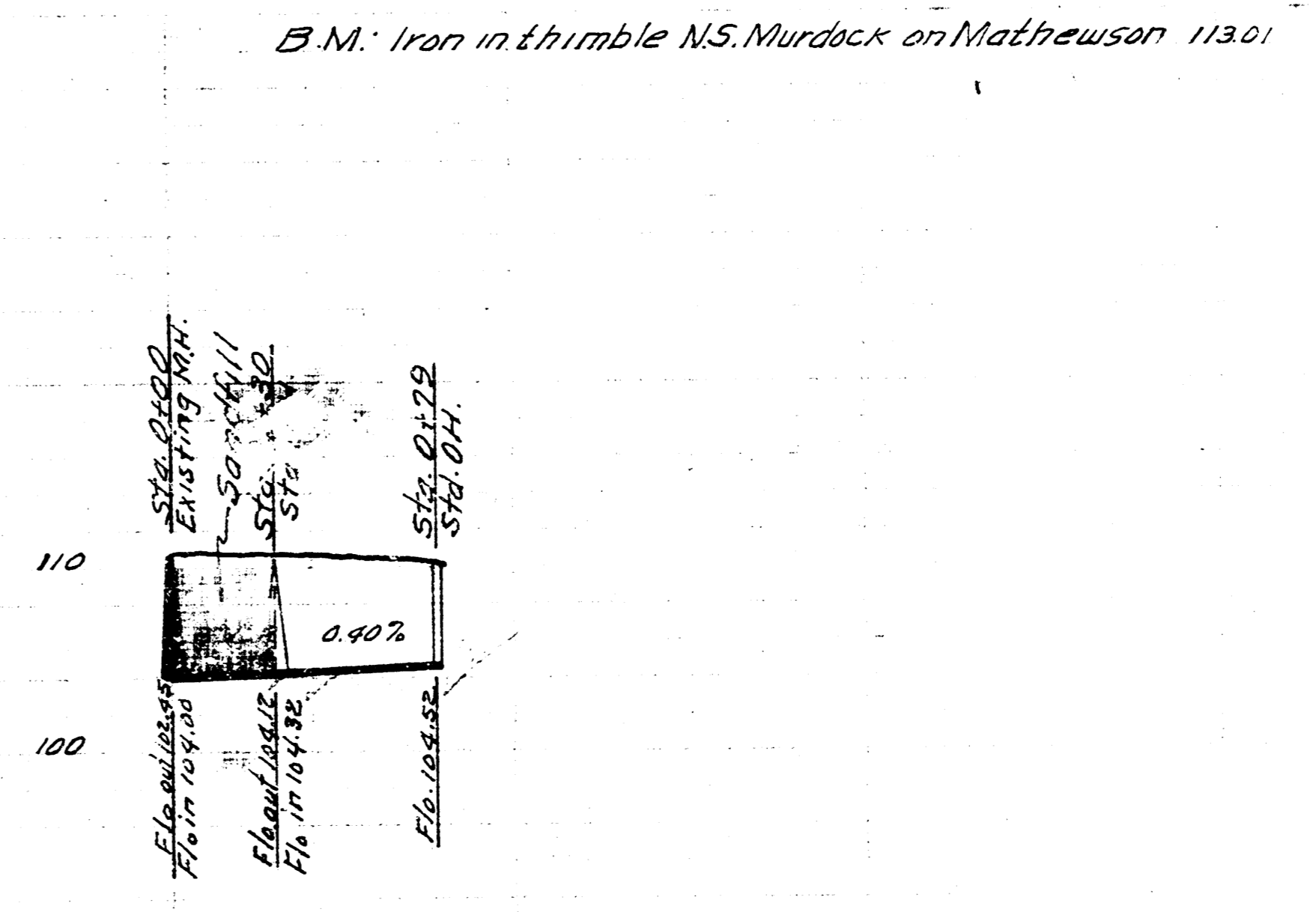
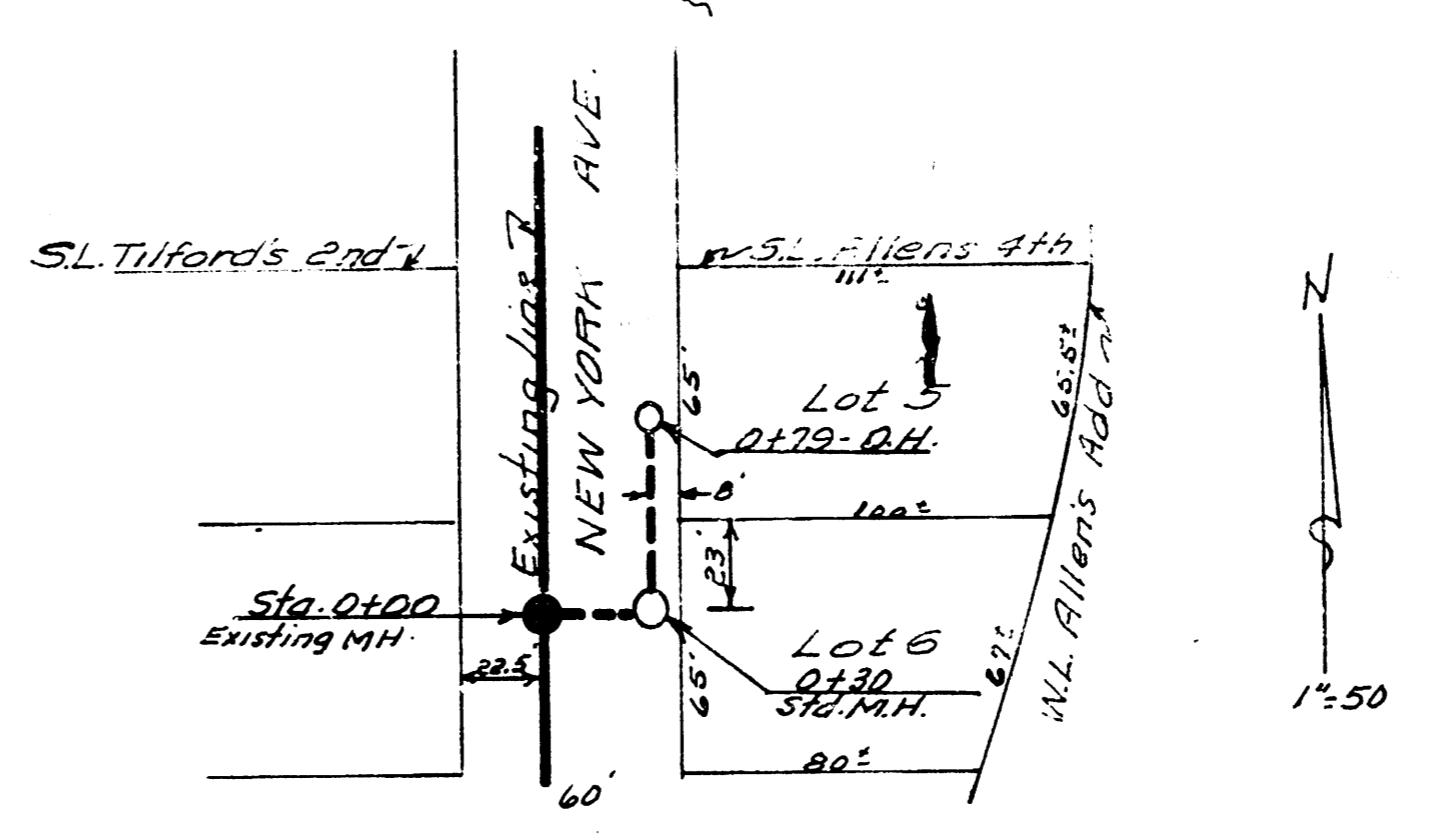


Date 10-8-55
 Plan by M.C. Gentry
 Checked by Book No. 31-69



MARGARET MARY'S PARISH S.S.
 CITY OF WICHITA KANSAS
 B.E. SMITH CITY ENGINEER
 Private Contract

PORTION - KREISCHER ADD



SAN SEWER LOTS 5 & 6 KREISCHER ADD.
 CITY OF WICHITA KANSAS
 B.E. SMITH CITY ENGINEER
 Private Contract
 M.K. GENTRY CO.