

PLANS

FOR

# UTILITY CONSTRUCTION

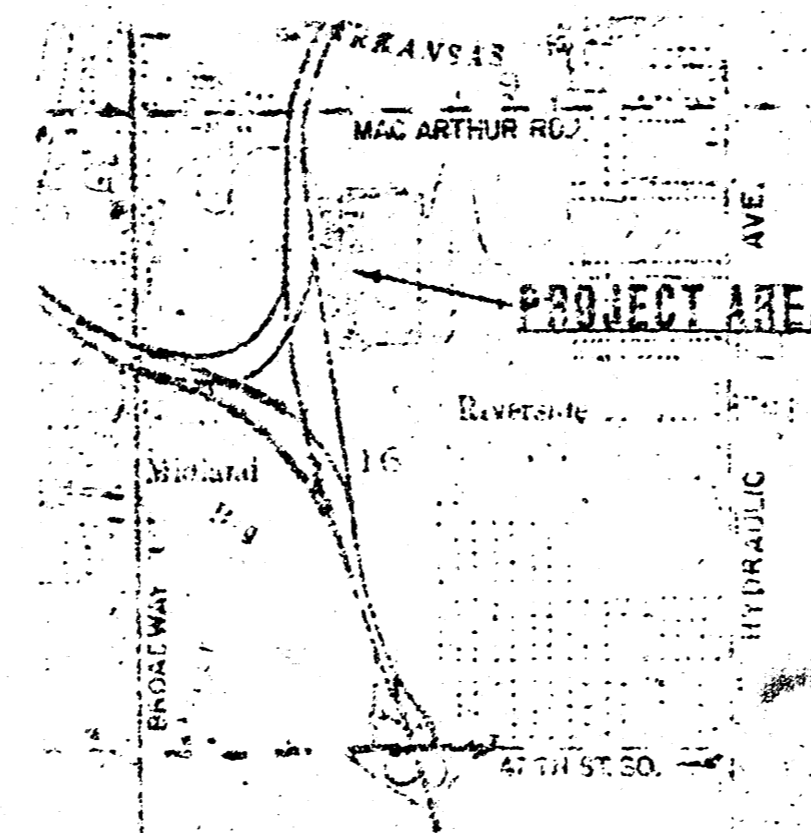
## LAKEVIEW MOBILE HOME PARK THIRD ADDITION

1984

CITY OF WICHITA PROJECT NUMBER: 468-76-245-80000-000-000-008

INDEX OF SHEETS

- 1. TITLE SHEET
- 2. WATER LINE EXTENSIONS
- 3. SANITARY SEWER EXTENSIONS
- 7-8 GAS LINE EXTENSIONS
- 9. ELECTRIC EXTENSIONS
- 10. UTILITY MAP

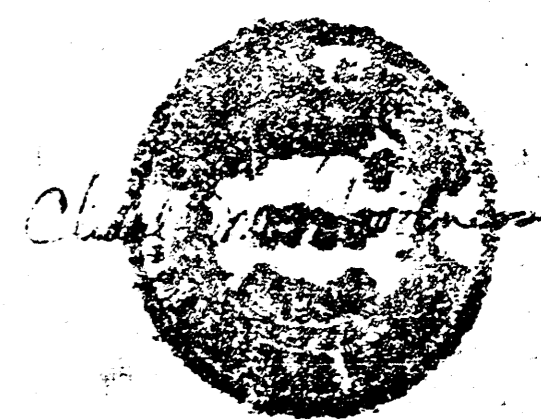


APPROVED AS NOTED  
 By CITY ENGINEER OF WICHITA  
 Sanitary Sewers *CDR 9/24/84*  
 Storm Sewers \_\_\_\_\_  
 Driveway Approaches \_\_\_\_\_

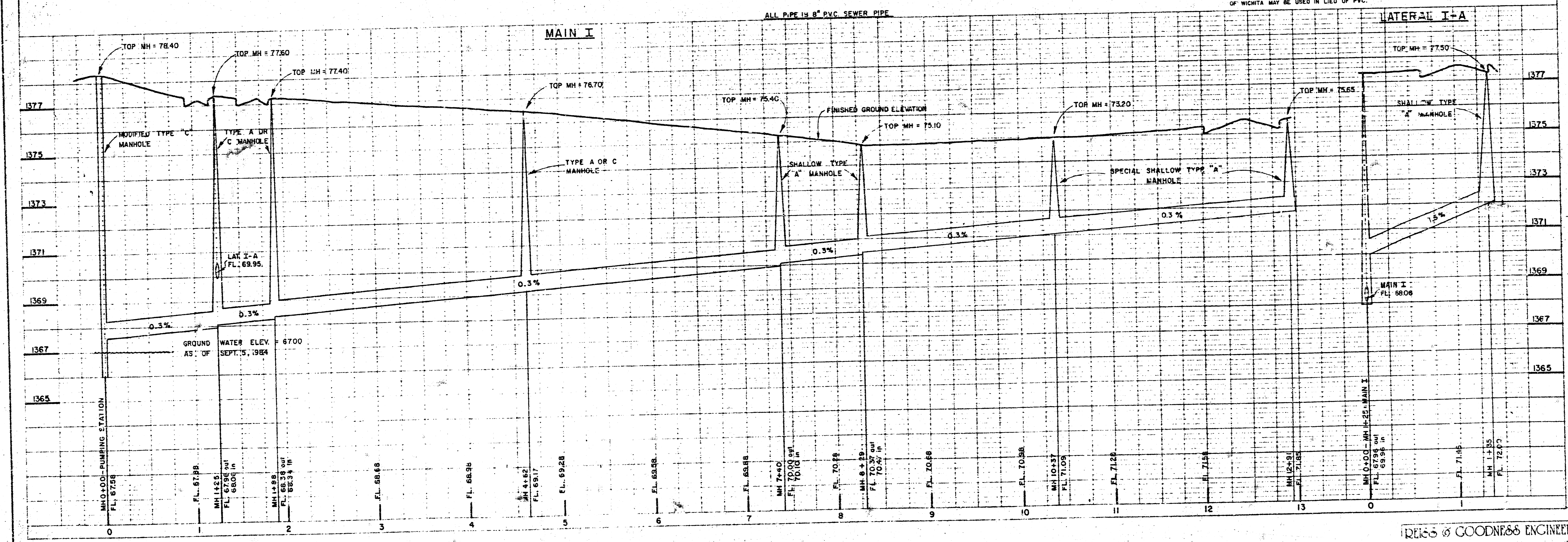
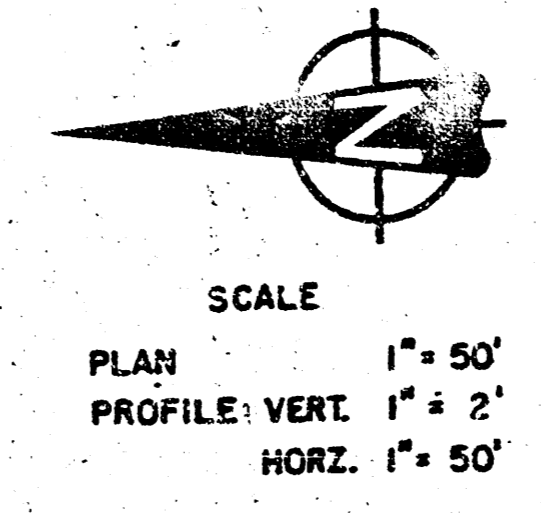
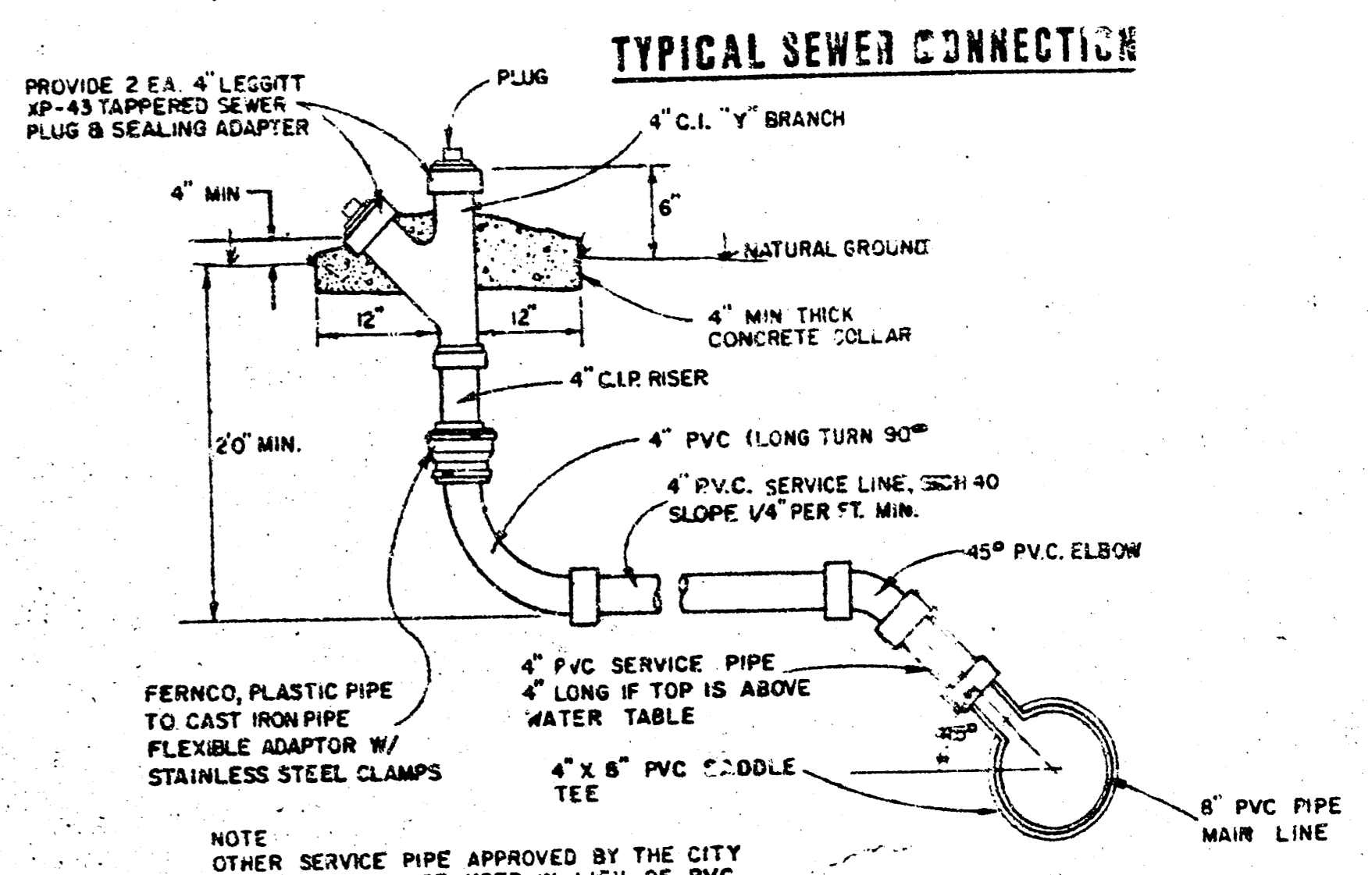
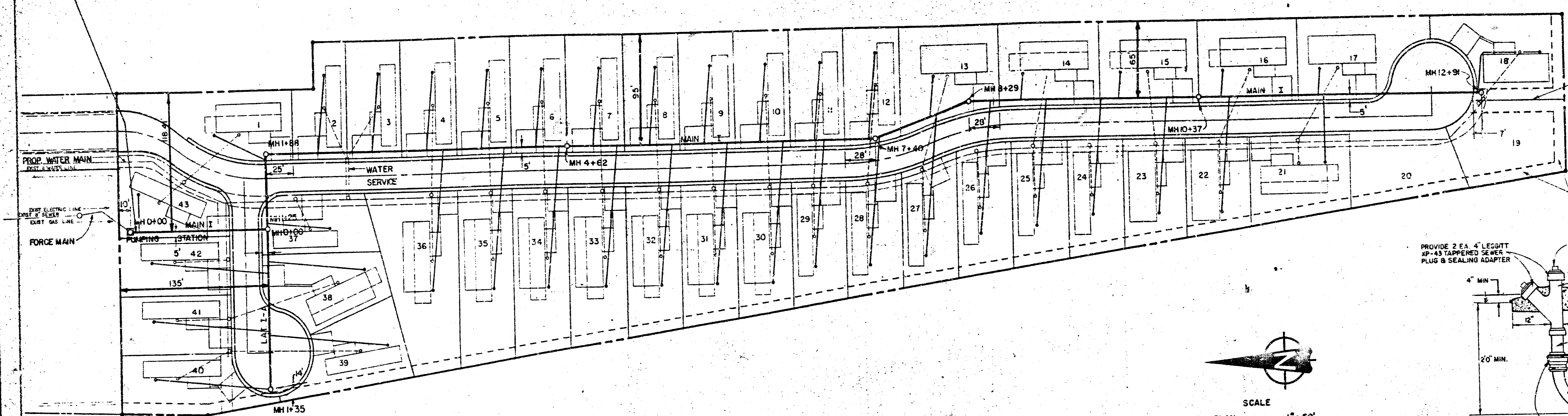
NOTE TO CONTRACTOR

This project will be constructed under the supervision of the CITY ENGINEER and conforming to the SPECIFICATIONS of the CITY OF WICHITA. The CONTRACTOR shall pay the City of Wichita for all costs of inspection.

BM  
 END OF CURB, EAST SIDE OF ALVALE  
 STREET END OF EXIST. CURB & GUTTER  
 ELEV. 1377 U.S.G.S.

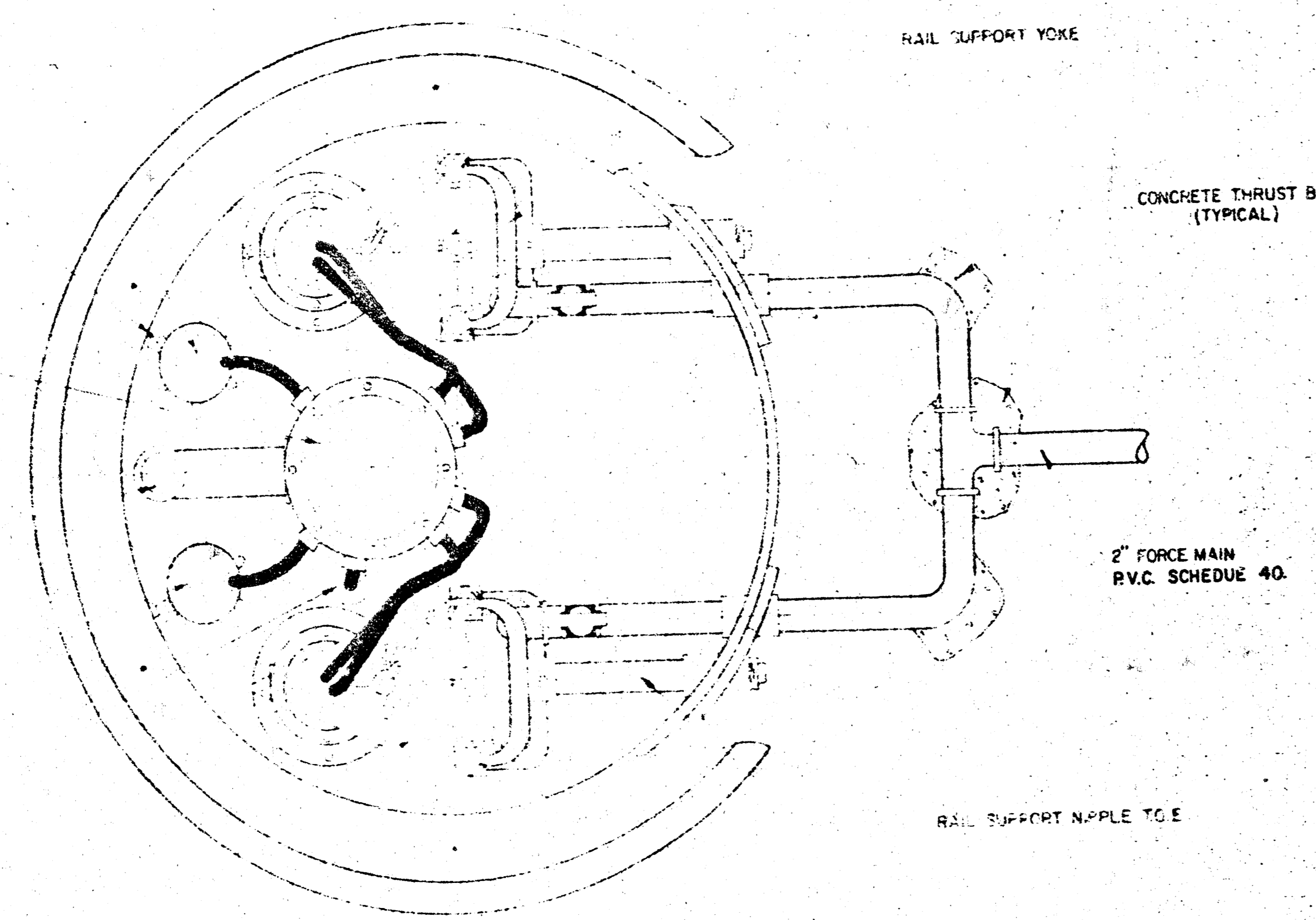
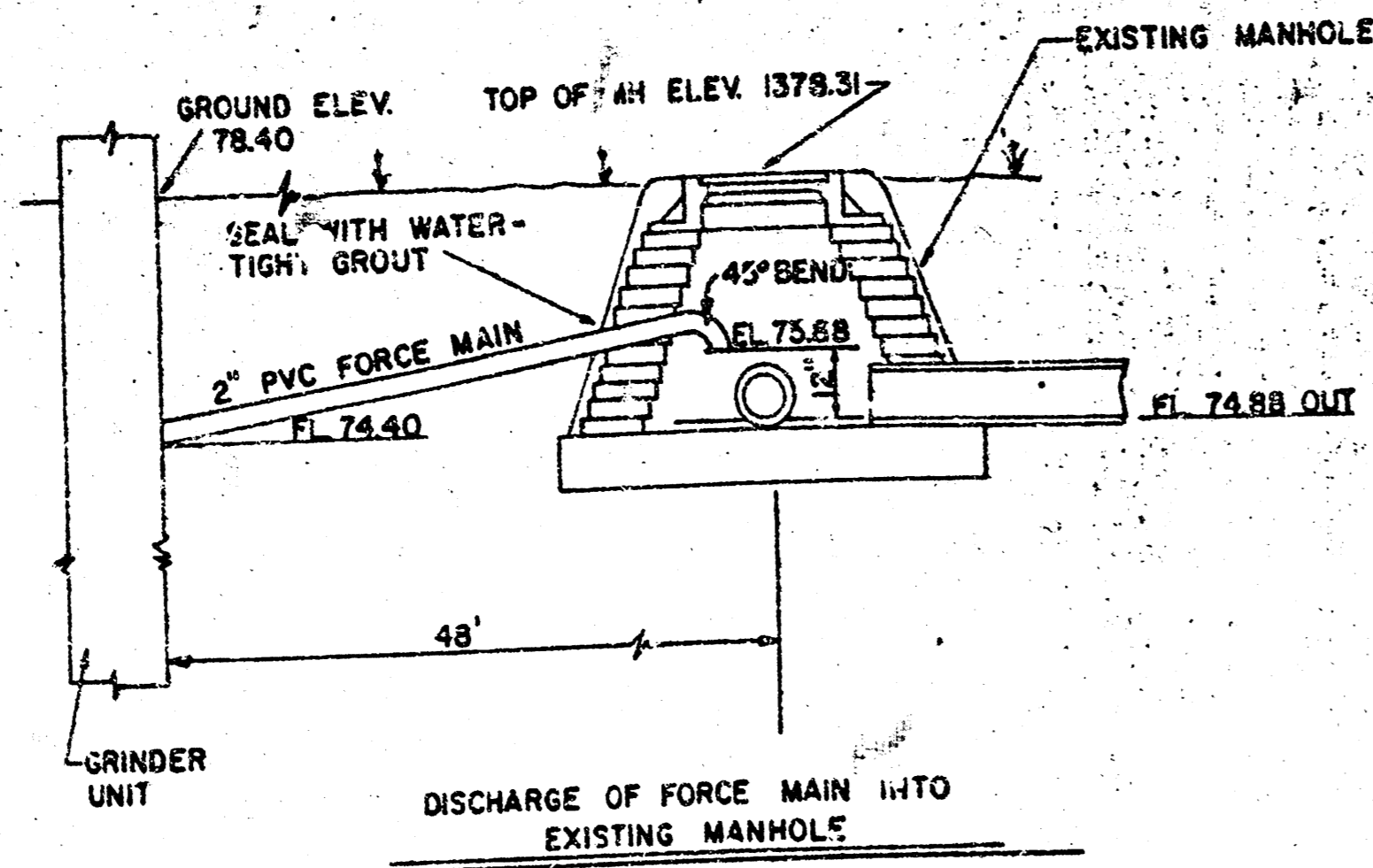


INSTALL MAIN LINE TRAP ON 3" PVC LINE BETWEEN PUMPING STATION AND FIRST SERVICE CONNECTION TO MOBILE HOME.  
SEE DETAIL SHEET 4 OF 10.

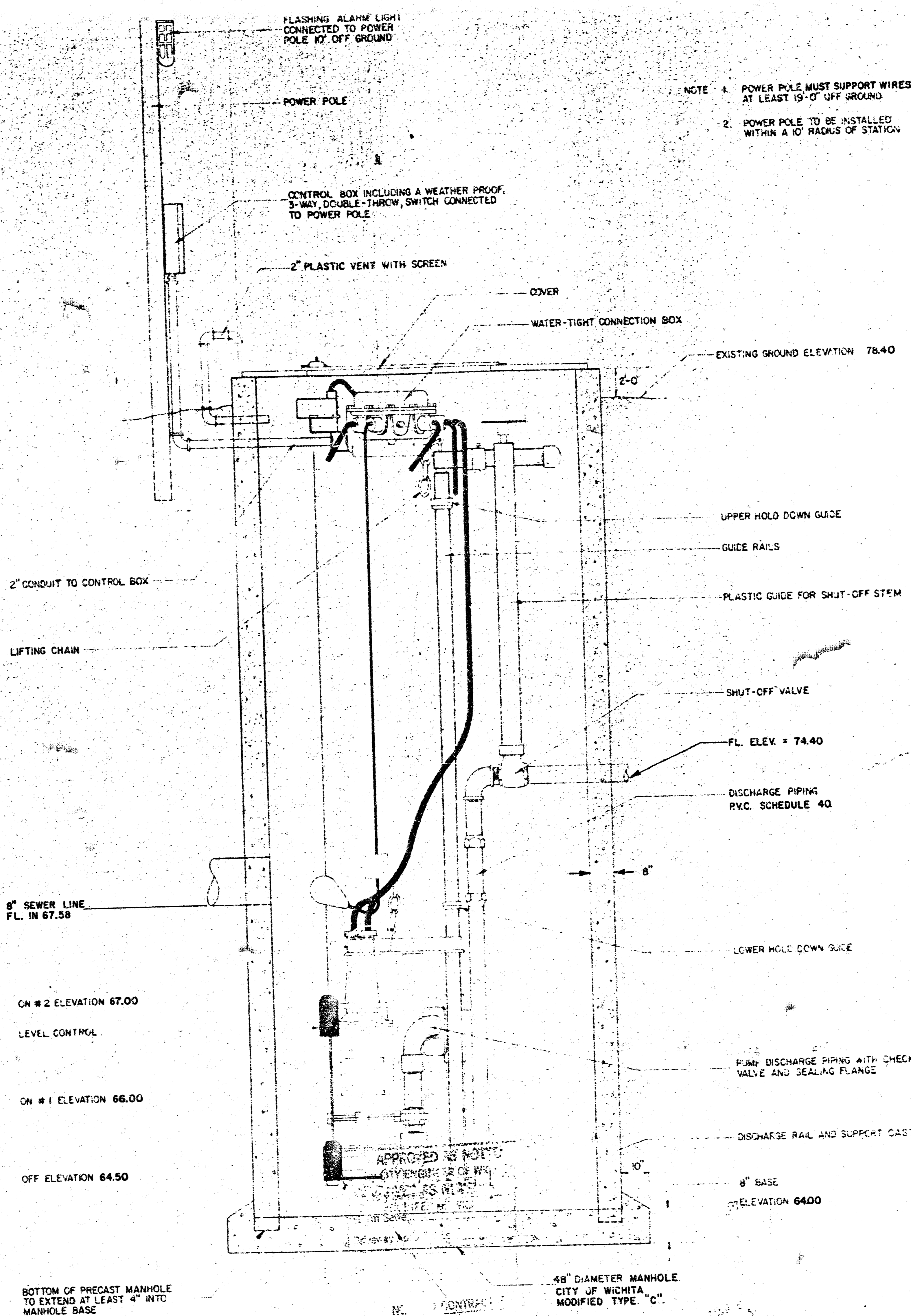
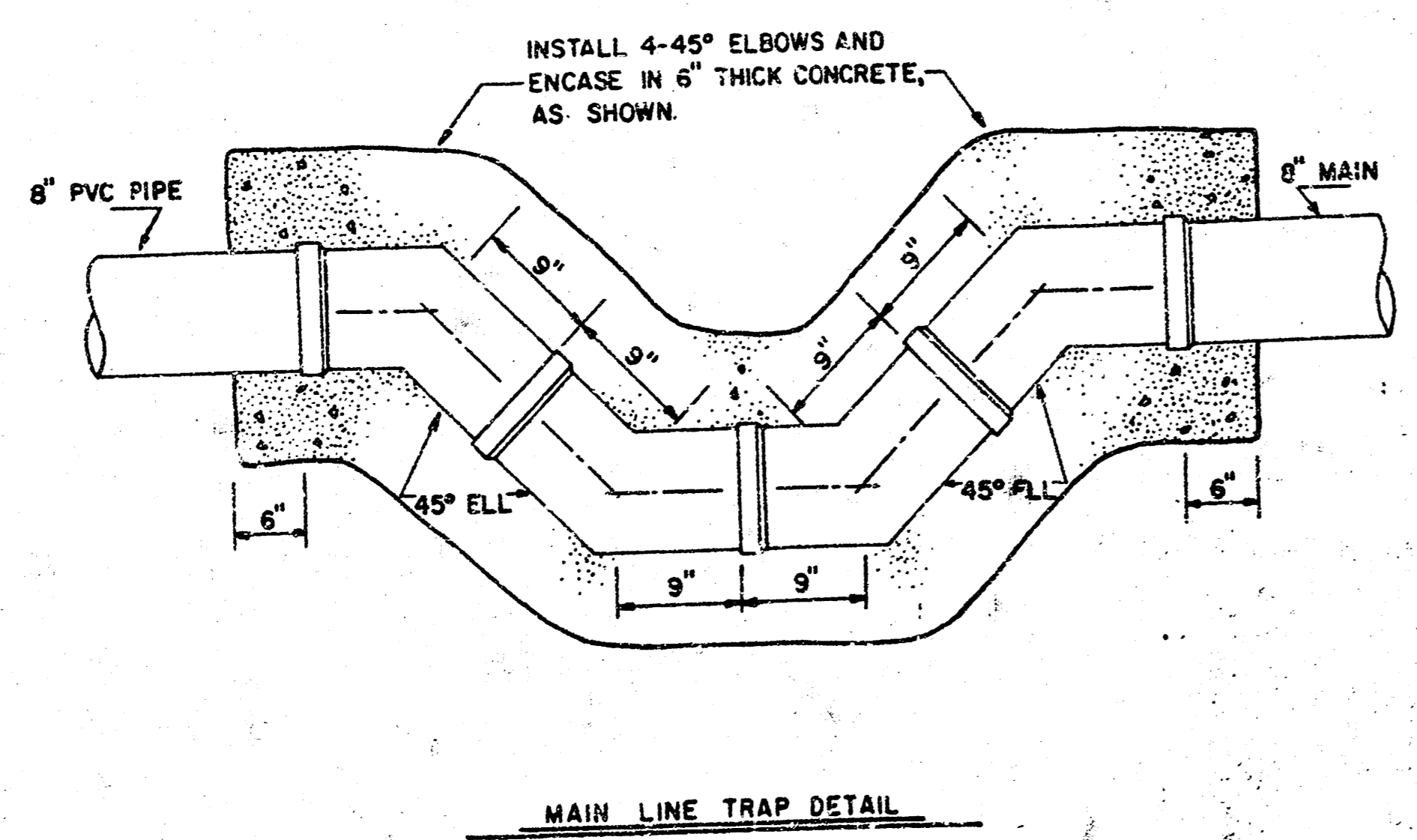


REISS & GOODNESS ENGINEERS  
3100 WEST 31<sup>ST</sup> STREET  
WICHITA, KANSAS 67203  
(913) 422-0223

FILMED FROM THE BEST COPY



NOTE: THESE DRAWINGS SHOWS DETAILS OF THE MEYERS GRINDER PUMP BUT IT IS NOT INTENDED TO ELIMINATE OTHER MANUFACTURERS. OTHER PUMPS MEETING SPECIFICATIONS MAY BE SUBMITTED FOR APPROVAL.



NOTE 1. POWER POLE MUST SUPPORT WIRES AT LEAST 19'-0\"/>

DUPLEX GRINDER UNIT ON RAILS  
NO SCALE

NOTE TWO (2) COATS OF WATER-PROOFING ASPHALT SHALL BE APPLIED TO THE OUTSIDE OF THE STATION. WATER-PROOFING ASPHALT SHALL CONFORM TO THE REQUIREMENTS OF STANDARD SPECIFICATIONS FOR ASPHALT DAMP-PROOFING AND WATER-PROOFING A.A.S.H.O. DESIGNATION MHS, TYPE B OR AS APPROVED BY THE ENGINEER.