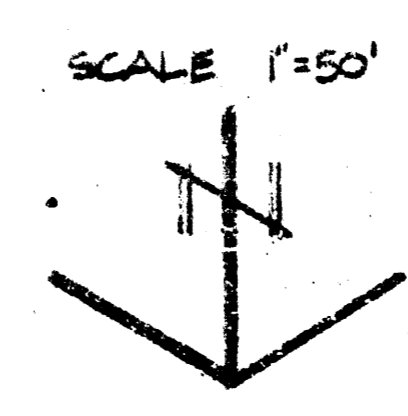
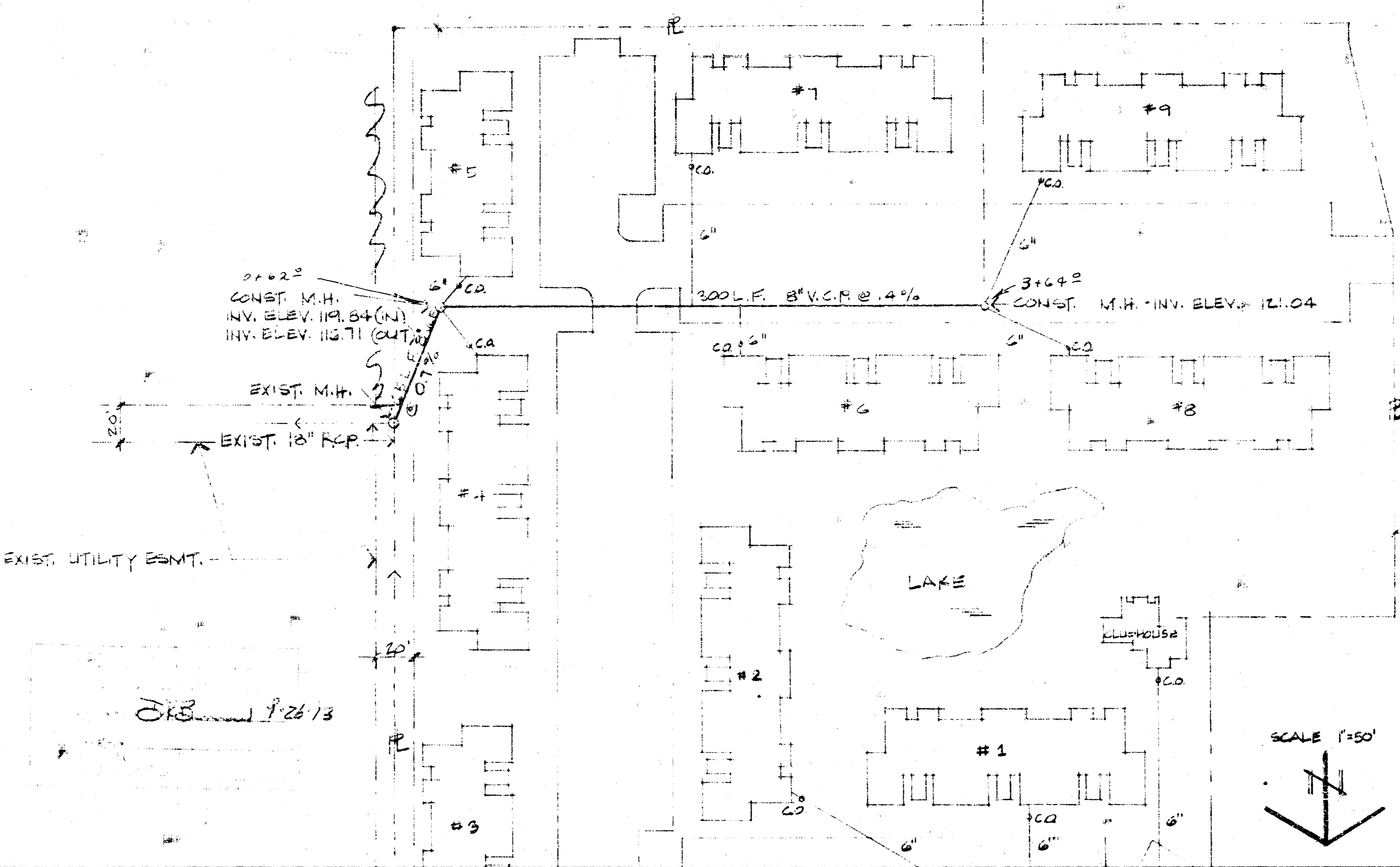


CENTRAL AVE

PROPOSED FUTURE SAN. S. FOR LOT 3 (L.C.)

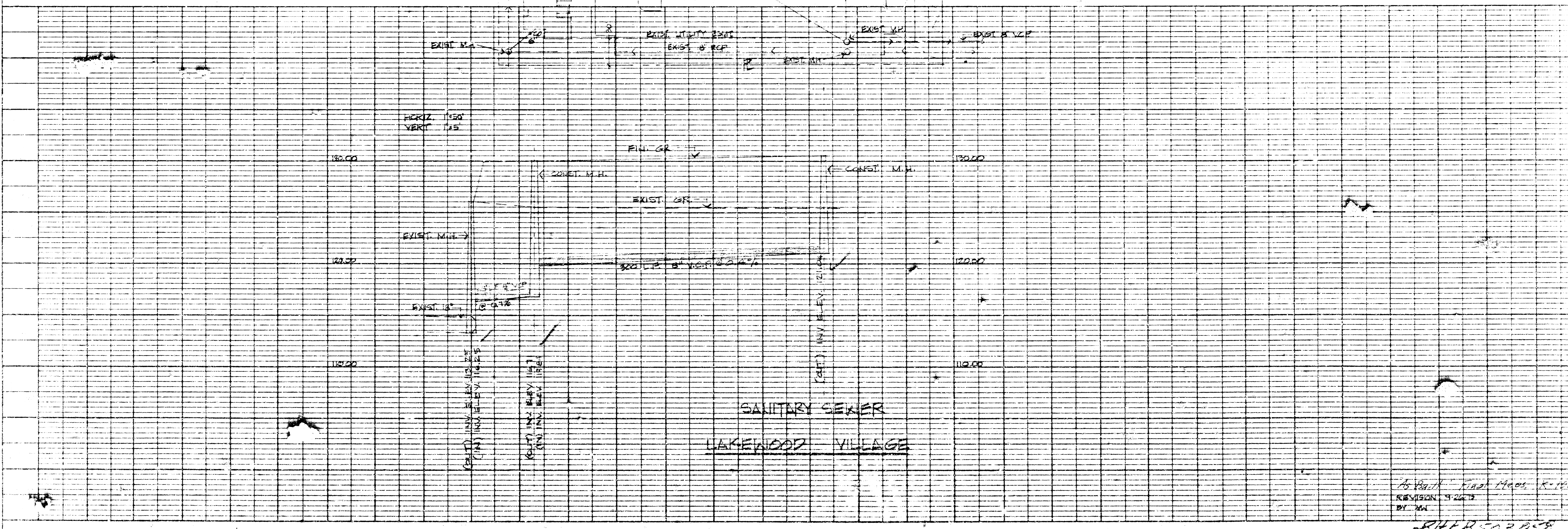
ROAD RIDGE



**NOTE TO CONTRACTOR**

This project will be constructed under the supervision of the CITY ENGINEER and according to the SPECIFICATIONS of the CITY OF WICHITA. The CONTRACTOR will reimburse the City of Wichita for all cost of Engineering, Plans, and Inspection.

OKB 9/26/13



SANITARY SEWER  
LAKELWOOD VILLAGE

As Built Final Maps R-100  
REVISION 9/26/13  
BY: MN

BHLB502058