

GENERAL NOTES

1. All elevations shown are City of Wichita Datum (USGS-1187.4 - City Datum).
2. Contractor will be required to provide a minimum advance notice of twenty-four (24) hours to utility companies prior to starting any excavation as follows:

The Contractor must notify the following in case of emergency:

CABLEVISION	261-4270 OR 263-2061
KPL/GAS SERVICE COMPANY	263-7511
KANSAS GAS & ELECTRIC	264-1141
SOUTHWESTERN BELL TELEPHONE CO.	1-571-2611
CITY OF WICHITA WATER DEPARTMENT	268-4938
CITY OF WICHITA SEWER MAINTENANCE	268-4071

3. The Contractor shall be responsible for maintaining continuous flow of sewage through construction. Contractor's proposed method for maintaining sewage flow shall be approved by the Engineer.
4. The Contractor shall be responsible for preserving property irons. The Contractor will be required to re-establish any property irons which are damaged or destroyed by his construction operations. Such irons shall be re-established by a licensed land surveyor or a licensed professional engineer in accordance with state law.

PLANS

FOR

SANITARY SEWER SYSTEM

LAMPLIGHTER MOBILE HOME PARK

PHASE II

WICHITA, SEDGWICK COUNTY, KANSAS

CITY OF WICHITA PRIVATE PROJECT NO. 334PPS (607861)

NOTE TO CONTRACTOR

INSPECTION AND TESTING FOR THIS PROJECT IS TO BE PROVIDED BY A LICENSED CONSULTING ENGINEERING FIRM UNDER CONTRACT WITH THE OWNER/DEVELOPER. SAID INSPECTION TO BE IN ACCORDANCE WITH THE CITY OF WICHITA STANDARD CONSTRUCTION ENGINEERING PRACTICES AND CERTIFIED BY A LICENSED PROFESSIONAL ENGINEER. NO WORK SHALL BE PERFORMED IN DEDICATED EASEMENTS OR THE PUBLIC RIGHT-OF-WAY BY THE CONTRACTOR WITHOUT SUCH INSPECTION NOR SHALL ANY WORK BE COMMENCED IN DEDICATED EASEMENTS OR PUBLIC RIGHT-OF-WAY WITHOUT WRITTEN AUTHORIZATION BY THE CITY ENGINEER.

APPROVED AS NOTED

By CITY ENGINEER OF WICHITA

Sanitary Sewers VRH 3/15/92

Storm Sewers _____

Driveway Approaches _____

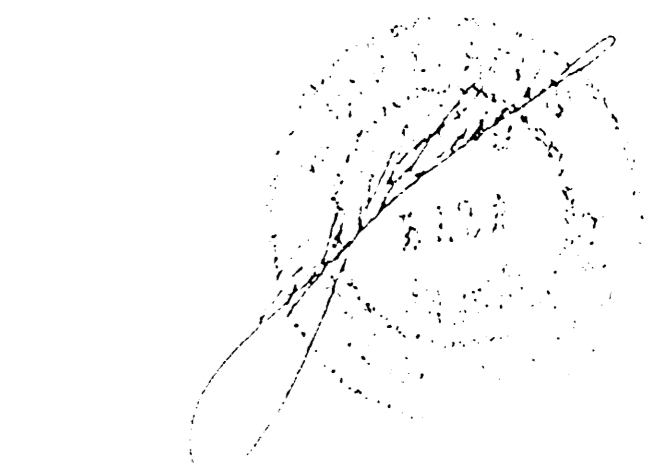
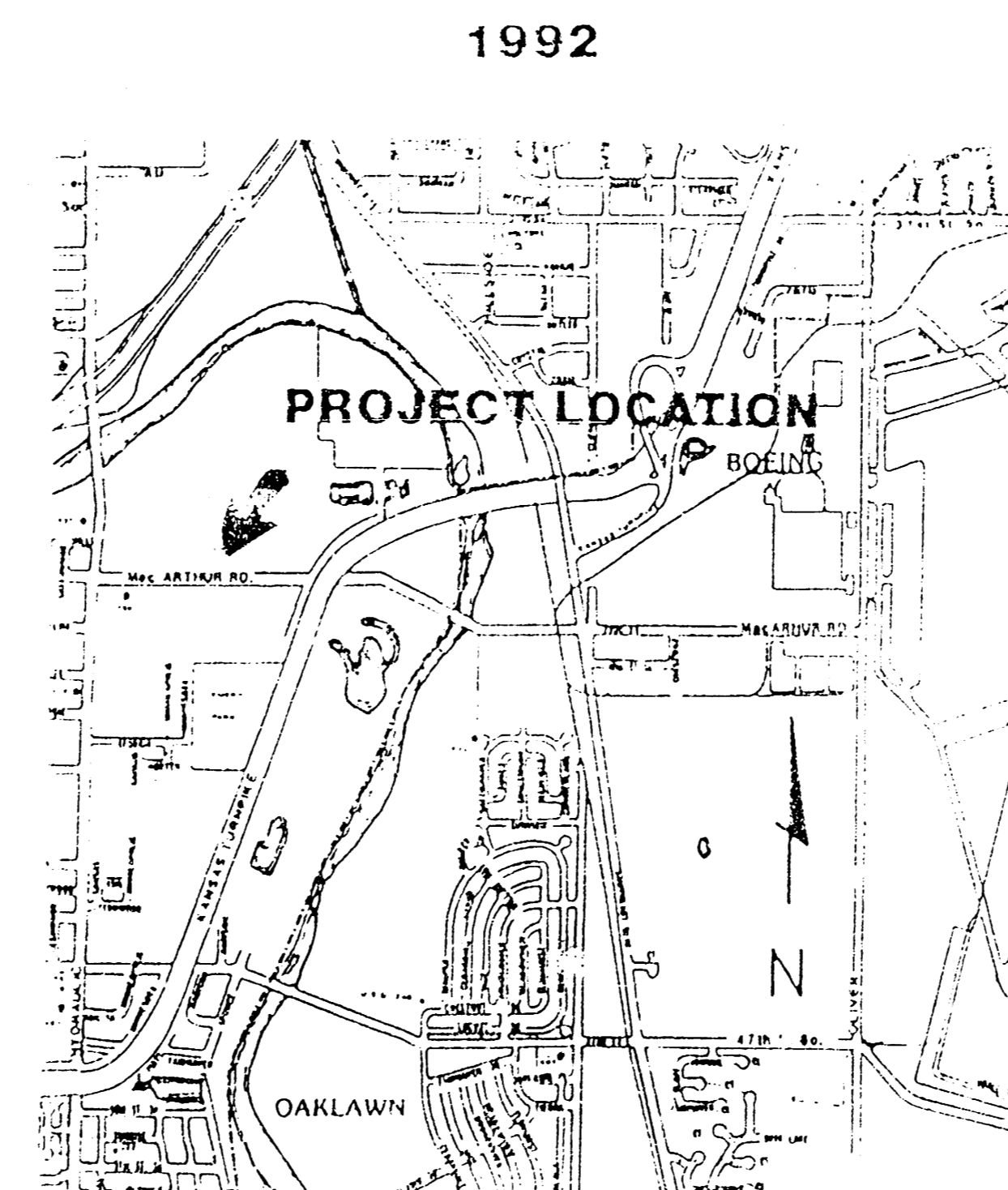
Water Mains _____

Paving _____

*Booked
10-02-92
JKB*

BM:
RAILROAD SPIKE IN POWER POLE
AT THE S.W. COR. OF THE PLAT
ELEV. 85.23
CITY OF WICHITA DATUM

NOTE:
CONTRACTOR HAS THE OPTION
OF USING TYPE "C" MANHOLE
WITH APPROVAL BY THE ENGINEER



Revised as built 8-27-92 Baughman
REISS & GOODNESS ENGINEERS
2100 WEST 21ST STREET
WICHITA, KANSAS 67203
(316) 832-0200

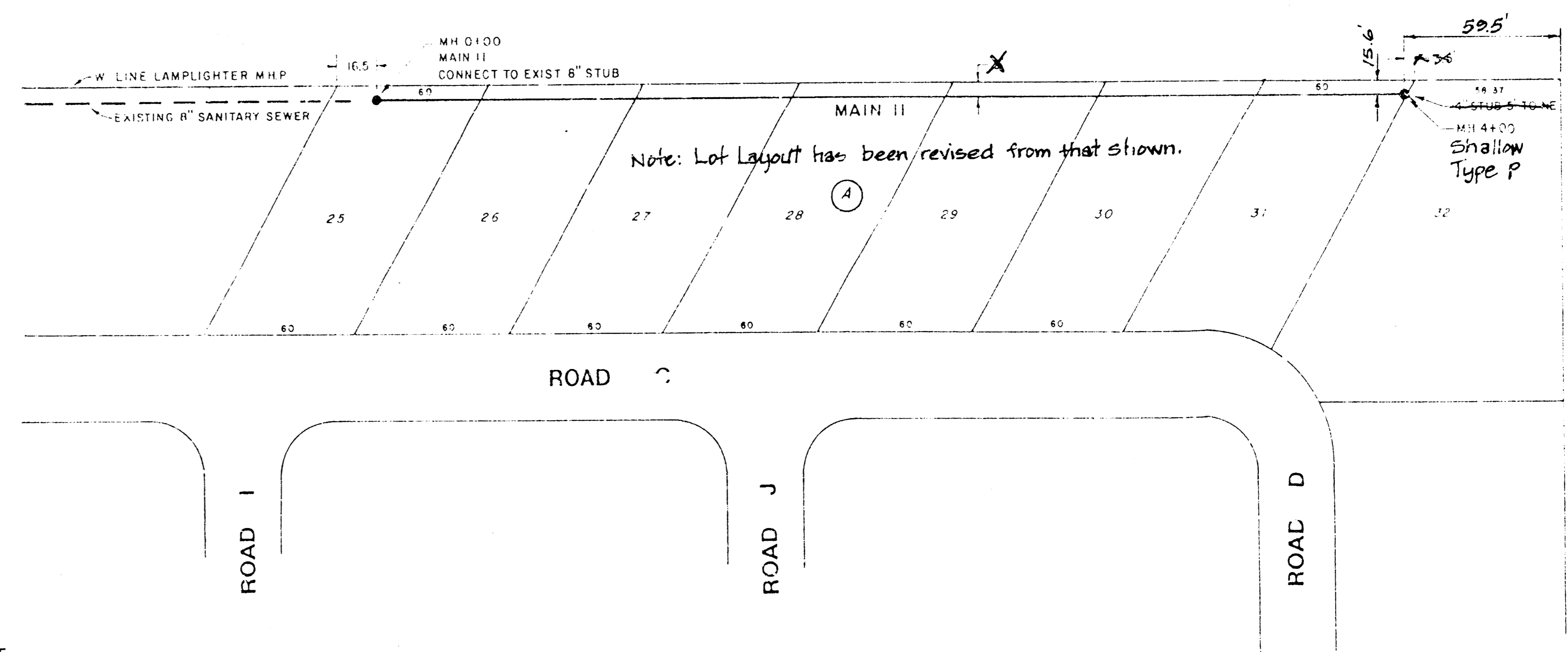
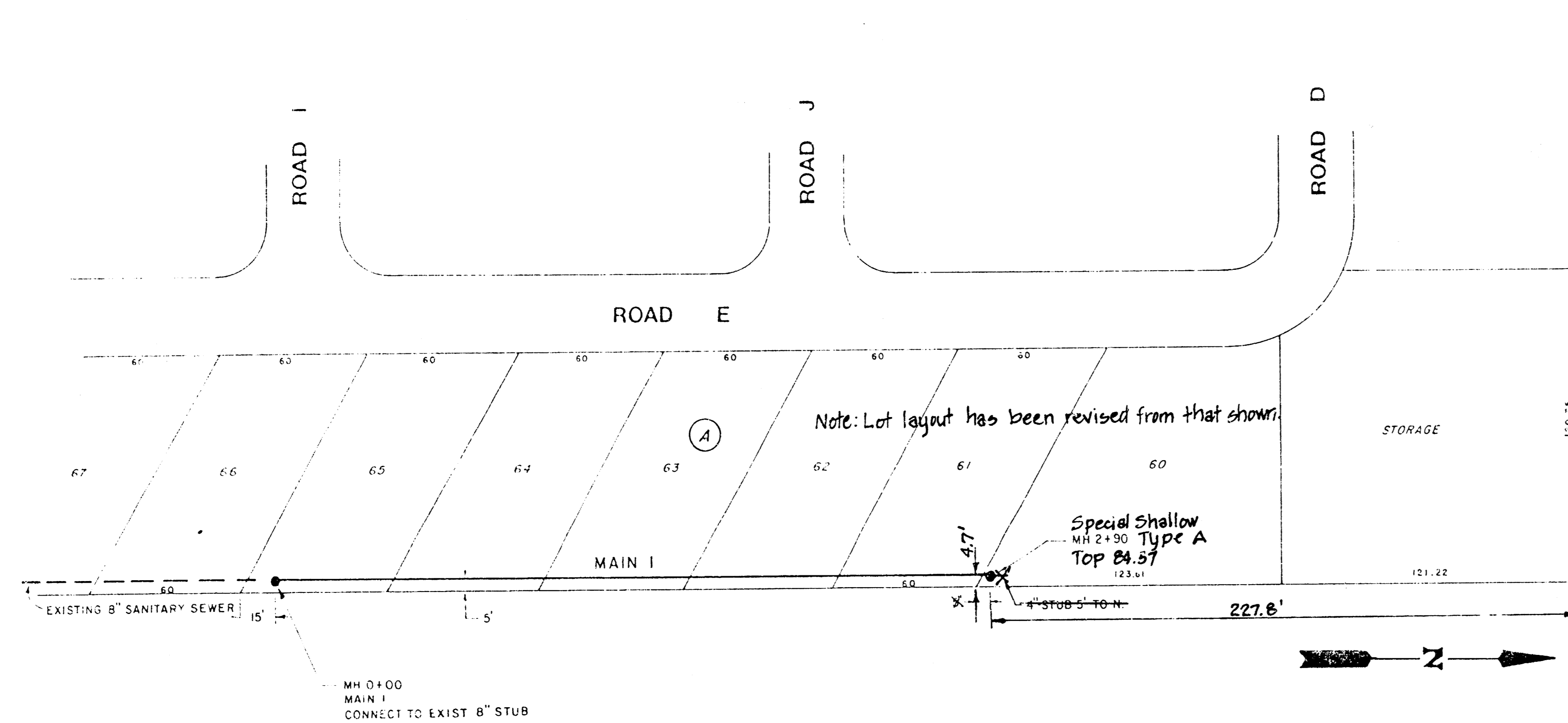
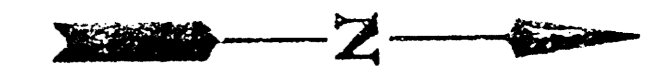
REVISION	DRAWN BY	CHECKED BY	DESIGNED BY

ALL SS SYSTEM SHALL BE CONSTRUCTED ACCORDING TO CITY OF WICHITA STANDARD SPECIFICATIONS

ALL MANHOLES BE TYPE "A", SHALLOW TYPE "A" OR SPECIAL SHALLOW TYPE "A" UNLESS NOTED

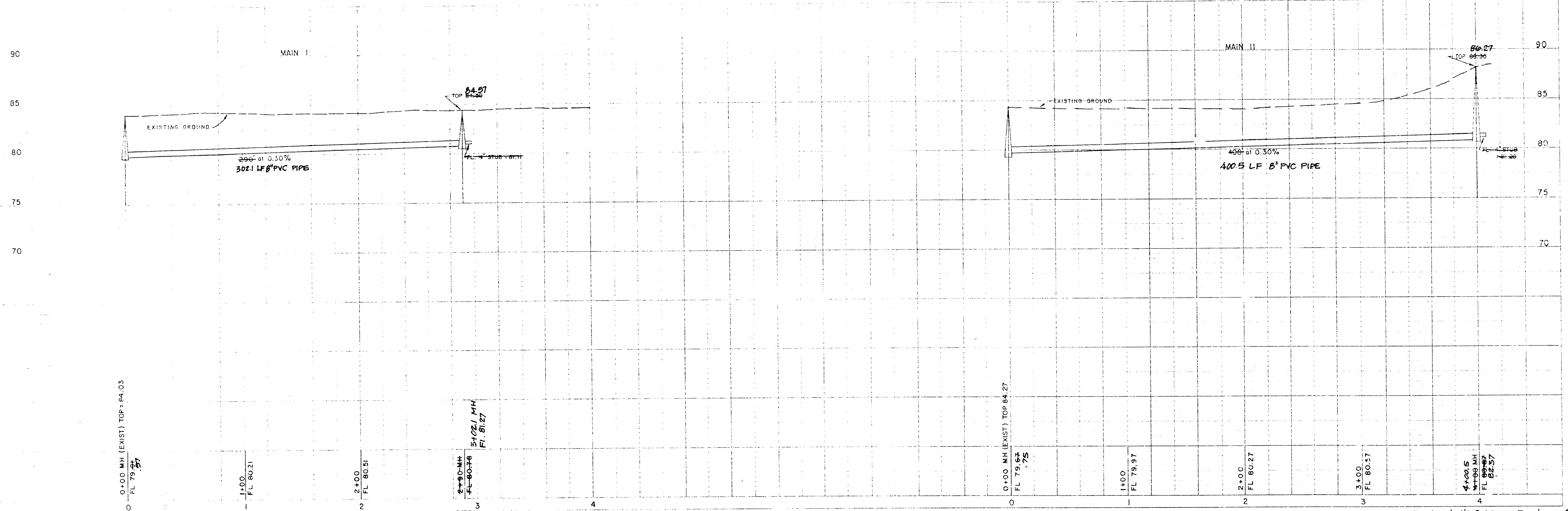
CONTRACTOR SHALL PROVIDE 24" MIN. COVER OVER PIPE

ALL MANHOLES SHALL BE VACUUM TESTED ACCORDING TO CITY OF WICHITA STANDARD PROCEDURE



SCALE
PLAN 1"=40'
PROFILE 1"=40' HORIZ
1"=5' VERT

ALL PIPE IS 8" PVC UNLESS NOTED



Revised as built 8-27-92 Baughman Co.
REISS & GOODNESS ENGINEERS
2100 WEST 21ST STREET
WICHITA, KANSAS 67203
(316) 832-0293

PLANS
FOR
SANITARY SEWER SYSTEM
FOR
LAMPLIGHTER MOBILE HOME PARK
WICHITA, SEDGWICK COUNTY, KANSAS

CITY OF WICHITA PRIVATE PROJECT NO. 468-76-245-80001-000-000-055

1986

APPROVED AS NOTED
By CITY ENGINEER OF WICHITA
Sanitary Sewers *[Signature]*
Storm Sewers _____
Driveway Approaches _____
Water Mains _____
Paving _____

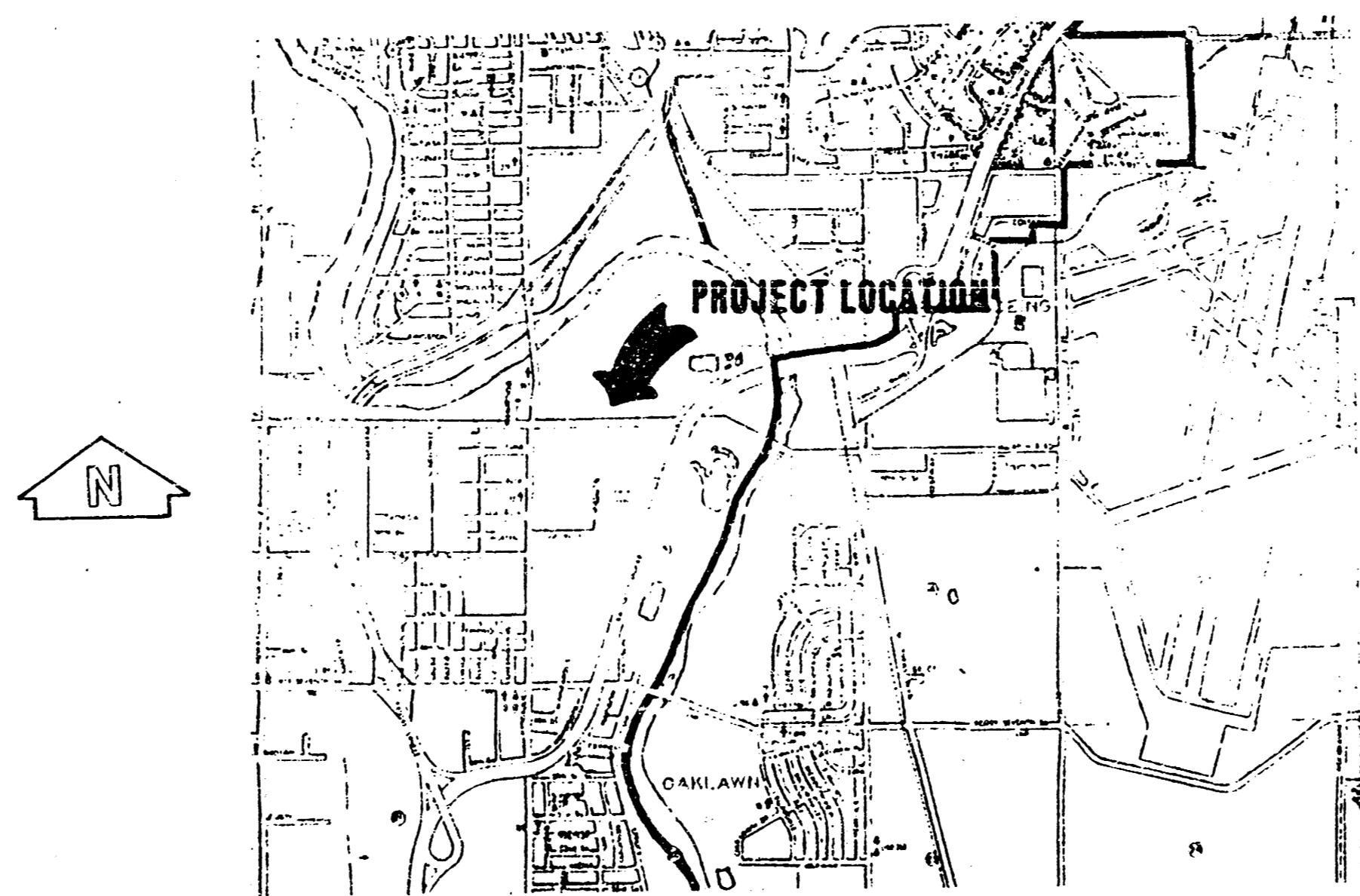
NOTE TO CONTRACTOR
This project will be constructed under the supervision of the CITY ENGINEER and conforming to the SPECIFICATIONS of the CITY OF WICHITA. The CONTRACTOR will pay the City of Wichita for all costs of plan review, inspection and booking per contract.

INDEX OF SHEETS

- SHEET 1 TITLE SHEET
- SHEET 2 LAYOUT MAP
- SHEET 3 UTILITY MAP
- SHEET 4 MAIN 1
- SHEET 5 LATERAL A
- SHEET 6 LATERAL B
- SHEET 7 LATERALS C, C-1, D, B E
- SHEET 8 LATERALS F, G, H, I, B J
- SHEET 9 TYPE "A" & "B" MANHOLES & CONCRETE ENCASUREMENT
- SHEET 10 SHALLOW MANHOLES, TYPE "A" & "B"
- SHEET 11 MANHOLE ADJUSTMENT DETAILS
- SHEET 12 RISER DETAILS
- SHEET 13 MANHOLE DETAIL, TYPE "C"

BM:
RAILROAD SPIKE IN POWER POLE AT THE
SW COR. OF THE PLAT.
ELEV. 85.23
CITY OF WICHITA DATUM

NOTE:
CONTRACTOR HAS THE OPTION OF
USING THE TYPE "C" MANHOLE WITH
APPROVAL OF THE ENGINEER



Revised as built 8-27-92 (Main 1) Sta. 14+31 to 16+74 (3+19.1 to 5+68.5) Eoughman Co.
Revised as built 7-5-90 (Lat. F & G and Main 1, Sta. 0+00 (11+12) to 3+19.1 (14+31)).

DEISS & GOODNESS ENGINEERS
2100 WEST 21ST STREET
WICHITA, KANSAS 67203
(316) 832-0283

REVISION	DRAWN BY	CHECKED BY	DESIGNED BY	PROJECT	CUSTOMER	SCALE	PROJECT NO.

GENERAL NOTES

1. All elevations shown are City of Wichita Datum (USGS-1187.4 - City Datum).
2. Contractor will be required to provide a minimum advance notice of twenty-four (24) hours to utility companies prior to starting any excavation as follows:

The Contractor must notify the following in case of emergency:

CABLEVISION	262-4270 OR 263-2061
KPL/GAS SERVICE COMPANY	263-7511
KANSAS GAS & ELECTRIC	264-1141
SOUTHWESTERN BELL TELEPHONE CO.	1-571-2611
CITY OF WICHITA WATER DEPARTMENT	268-4908
CITY OF WICHITA SEWER MAINTENANCE	268-4071

3. The Contractor shall be responsible for maintaining continuous flow of sewage through construction. Contractor's proposed method for maintaining sewage flow shall be approved by the Engineer.
4. The Contractor shall be responsible for preserving property irons. The Contractor will be required to re-establish any property irons which are damaged or destroyed by his construction operations. Such irons shall be re-established by a licensed land surveyor or a licensed professional engineer in accordance with state laws.

PLANS

FOR

SANITARY SEWER SYSTEM

LAMPLIGHTER MOBILE HOME PARK

PHASE II

WICHITA, SEDGWICK COUNTY, KANSAS

CITY OF WICHITA PRIVATE PROJECT NO. 334PPS (607861)

NOTE TO CONTRACTOR

INSPECTION AND TESTING FOR THIS PROJECT IS TO BE PROVIDED BY A LICENSED CONSULTING ENGINEERING FIRM UNDER CONTRACT WITH THE OWNER/DEVELOPER. SAID INSPECTION TO BE IN ACCORDANCE WITH THE CITY OF WICHITA STANDARD CONSTRUCTION ENGINEERING PRACTICES AND CERTIFIED BY A LICENSED PROFESSIONAL ENGINEER. NO WORK SHALL BE PERFORMED IN DEDICATED EASEMENTS OR THE PUBLIC RIGHT-OF-WAY BY THE CONTRACTOR WITHOUT SUCH INSPECTION NOR SHALL ANY WORK BE COMMENCED IN DEDICATED EASEMENTS OR PUBLIC RIGHT-OF-WAY WITHOUT WRITTEN AUTHORIZATION BY THE CITY ENGINEER.

APPROVED AS NOTED

By CITY ENGINEER OF WICHITA

Sanitary Sewers VRH 3/15/92

Storm Sewers _____

Driveway Approaches _____

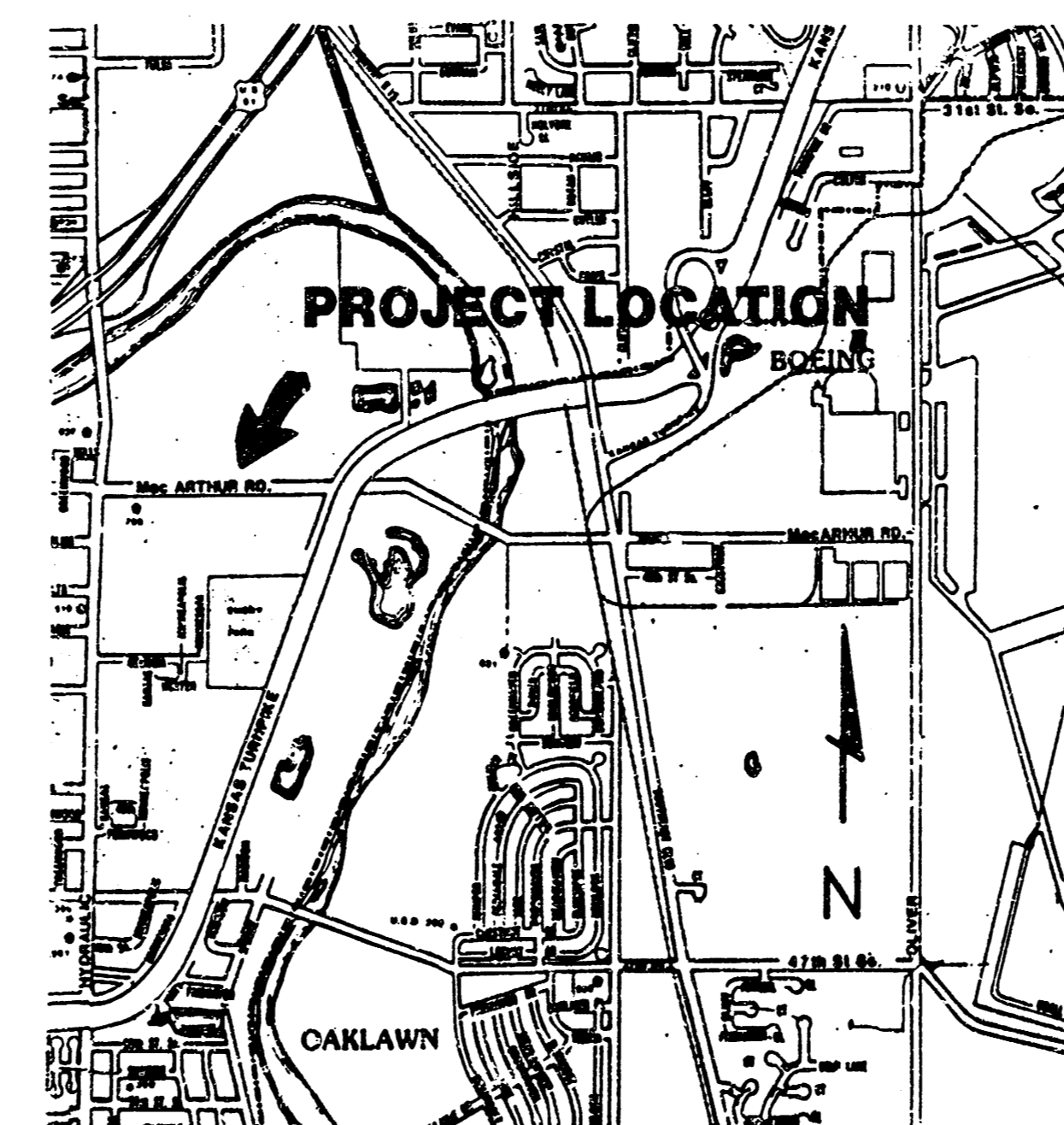
Water Mains _____

Paving _____

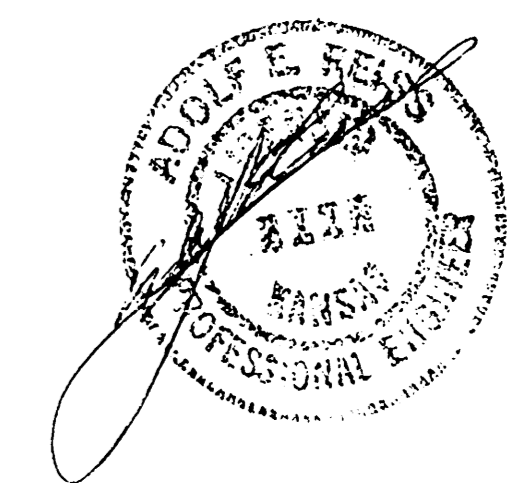
BM:
RAILROAD SPIKE IN POWER POLE
AT THE S.W. COR. OF THE PLAT
ELEV. 85.23
CITY OF WICHITA DATUM

NOTE:
CONTRACTOR HAS THE OPTION
OF USING TYPE "C" MANHOLE
WITH APPROVAL BY THE ENGINEER

1992



*Booked
10-22-92
JKB*

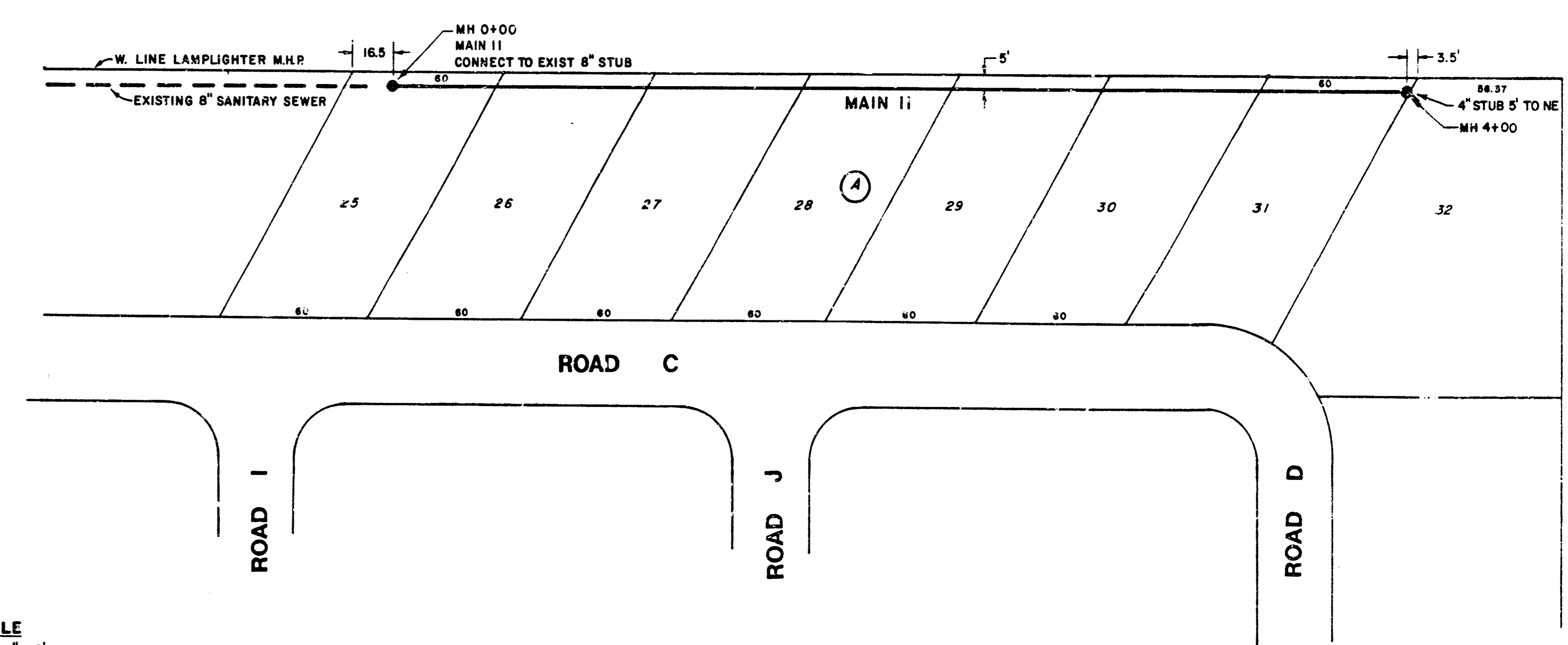
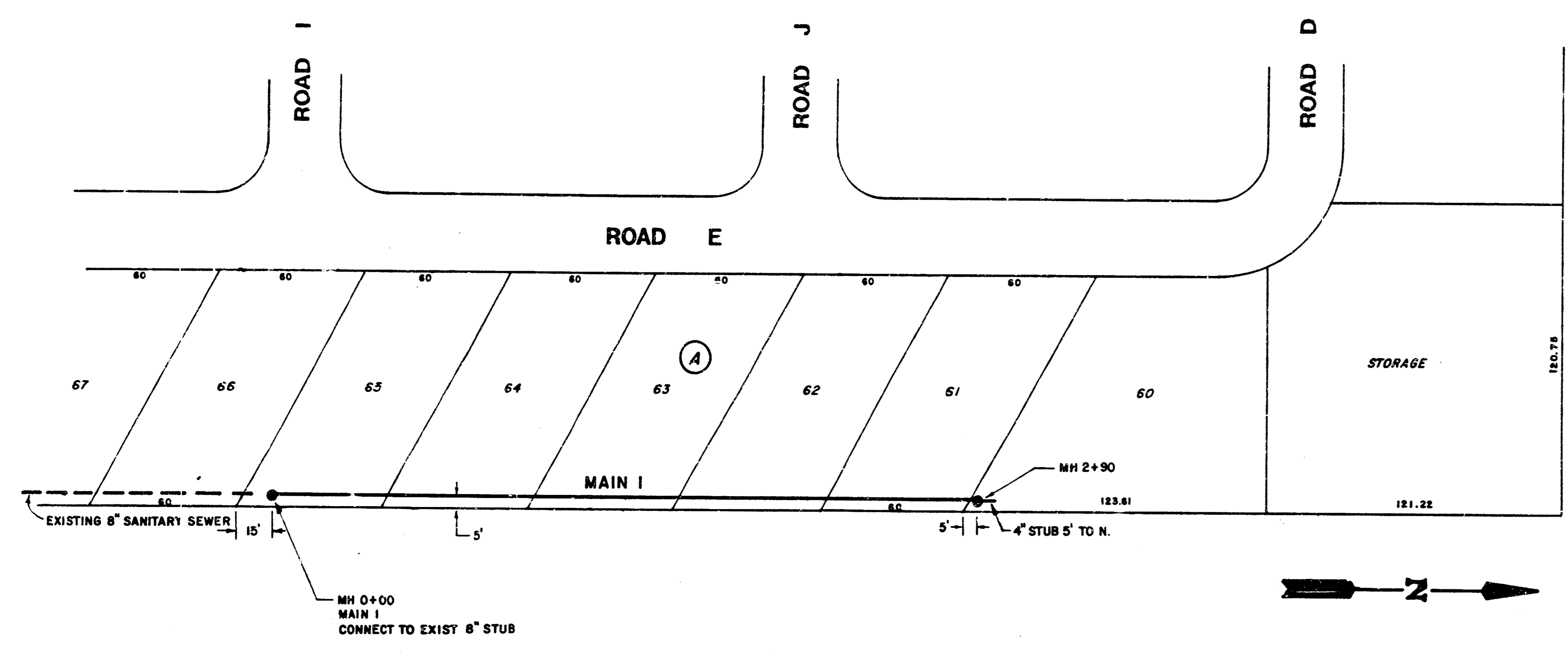
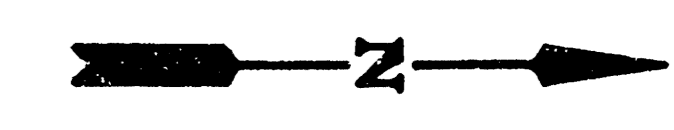


REID & GOODNESS ENGINEERS
2100 WEST 21ST STREET
WICHITA, KANSAS 67203
(316) 632-0285

REVISION	DRAWN BY	CHECKED BY	DESIGNED BY

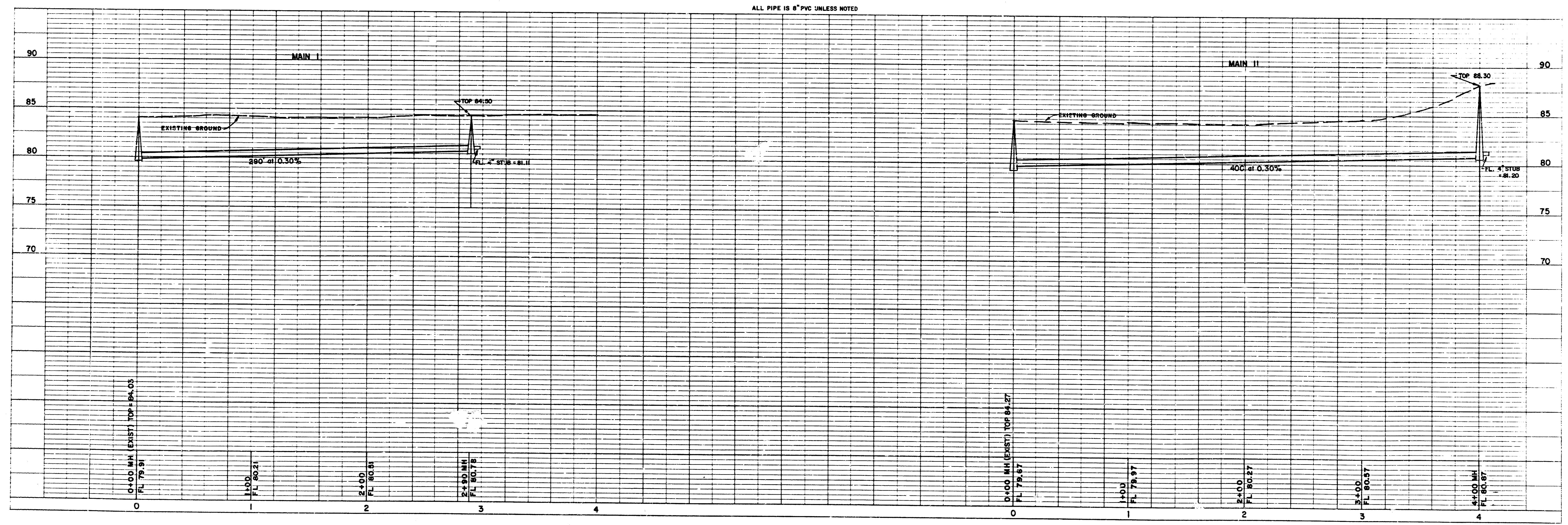
SCALE	PROJECT NO.
DATE 2-26-92	SHEET 1 OF 1

ALL SS SYSTEM SHALL BE CONSTRUCTED ACCORDING TO CITY OF WICHITA STANDARD SPECIFICATIONS
 ALL MANHOLES BE TYPE "A", SHALLOW TYPE "A", OR SPECIAL SHALLOW TYPE "A" UNLESS NOTED
 CONTRACTOR SHALL PROVIDE 24" MIN. COVER OVER PIPE
 ALL MANHOLES SHALL BE VACUUM TESTED ACCORDING TO CITY OF WICHITA STANDARD PROCEDURE



SCALE
 PLAN 1"=40'
 PROFILE 1"=40' HORIZ.
 1"=5' VERT.

ALL PIPE IS 8" PVC UNLESS NOTED



REISS & GOODNESS ENGINEERS
 2100 WEST 21ST STREET
 WICHITA, KANAS 67203
 (316) 832-0218

REVISION	DRAWN BY RS	CHECKED BY	DESIGNED BY RP	PROJECT SANITARY SEWER EXTENSIONS MAIN I & MAIN II	CUSTOMER LAMPLIGHTER MOBILE HOME PARK - PHASE II	SCALE NOTED	PROJECT NO. MS 1285
						DATE 2-26-98	SHEET 2 OF 2