

PLANS
FOR
PHASE IV
SANITARY SEWER SYSTEM
FOR
LAMPLIGHTER MOBILE HOME PARK
WICHITA, SEDGWICK COUNTY, KANSAS

CITY OF WICHITA PRIVATE PROJECT NO. ~~466-76-245-8000~~ ~~000-000-055~~
407 PPS (607861)

1986

APPROVED AS NOTED
By CITY ENGINEER OF WICHITA
Sanitary Sewers *J.K.B.*
Storm Sewers _____
Driveway Approaches _____
Water Mains _____
Paving _____

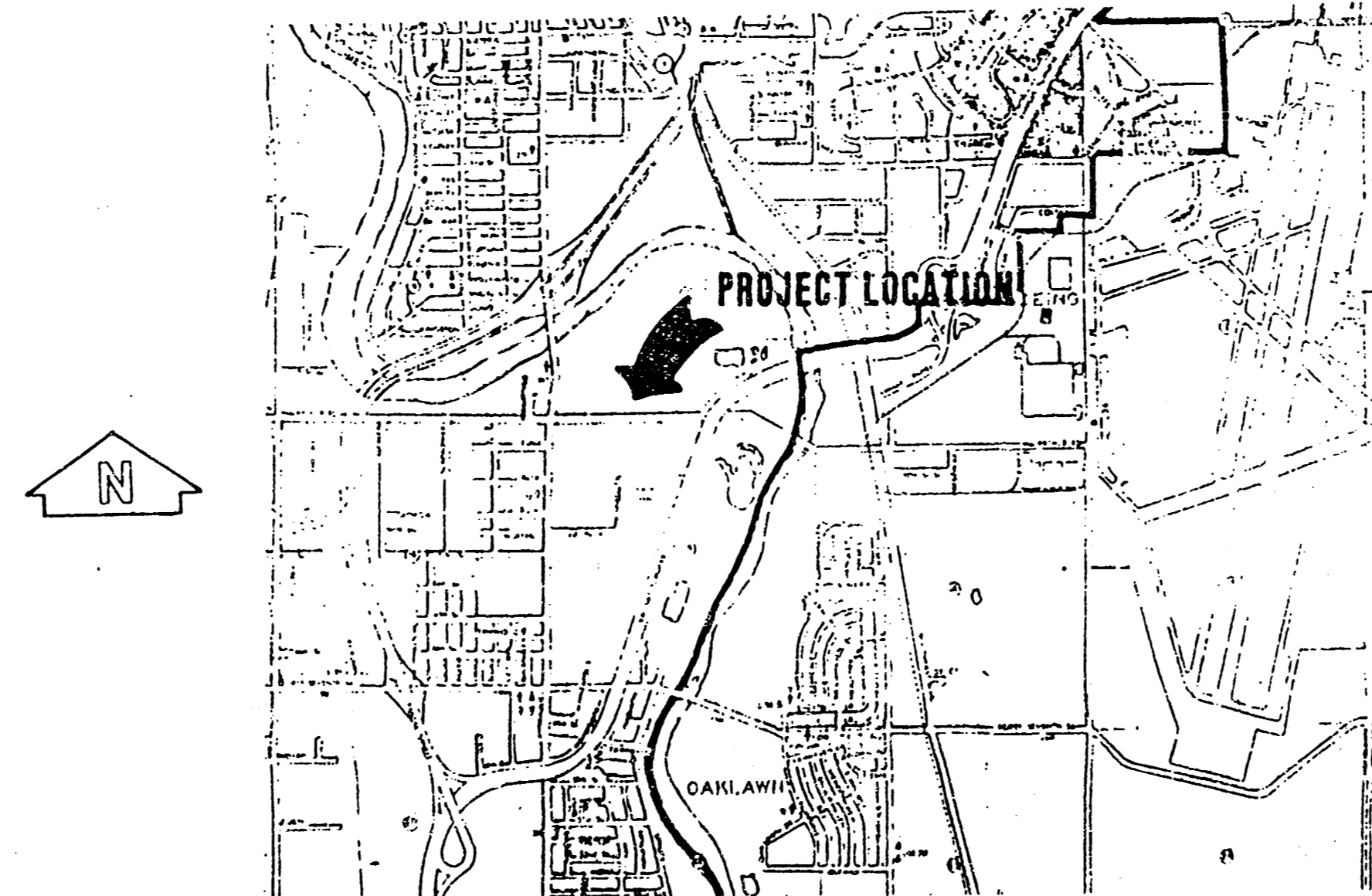
NOTE TO CONTRACTOR

This project will be constructed under the supervision of the CITY ENGINEER and conforming to the SPECIFICATIONS of the CITY OF WICHITA. The CONTRACTOR will pay the City of Wichita for all costs of plan review, inspection and booking per contract.

INDEX OF SHEETS

- SHEET 1 TITLE SHEET
- SHEET 2 LAYOUT MAP
- SHEET 3 UTILITY MAP
- SHEET 4 MAIN 1
- SHEET 5 LATERAL A
- SHEET 6 LATERAL B
- SHEET 7 LATERALS C, CH, D, & E
- SHEET 8 LATERALS F, G, H, I, & J
- SHEET 9 TYPE "A" & "B" MANHOLES & CONCRETE ENCASUREMENT
- SHEET 10 SHALLOW MANHOLES, TYPE "A" & "B"
- SHEET 11 MANHOLE ADJUSTMENT DETAILS
- SHEET 12 RISER DETAILS
- SHEET 13 MANHOLE DETAIL, TYPE "C"

BM:
RAILROAD SPIKE IN POWER POLE AT THE
SW COR. OF THE PLAT.
ELEV. 85.23
CITY OF WICHITA DATUM



Booked 11-5-93
JKB
From As Builts

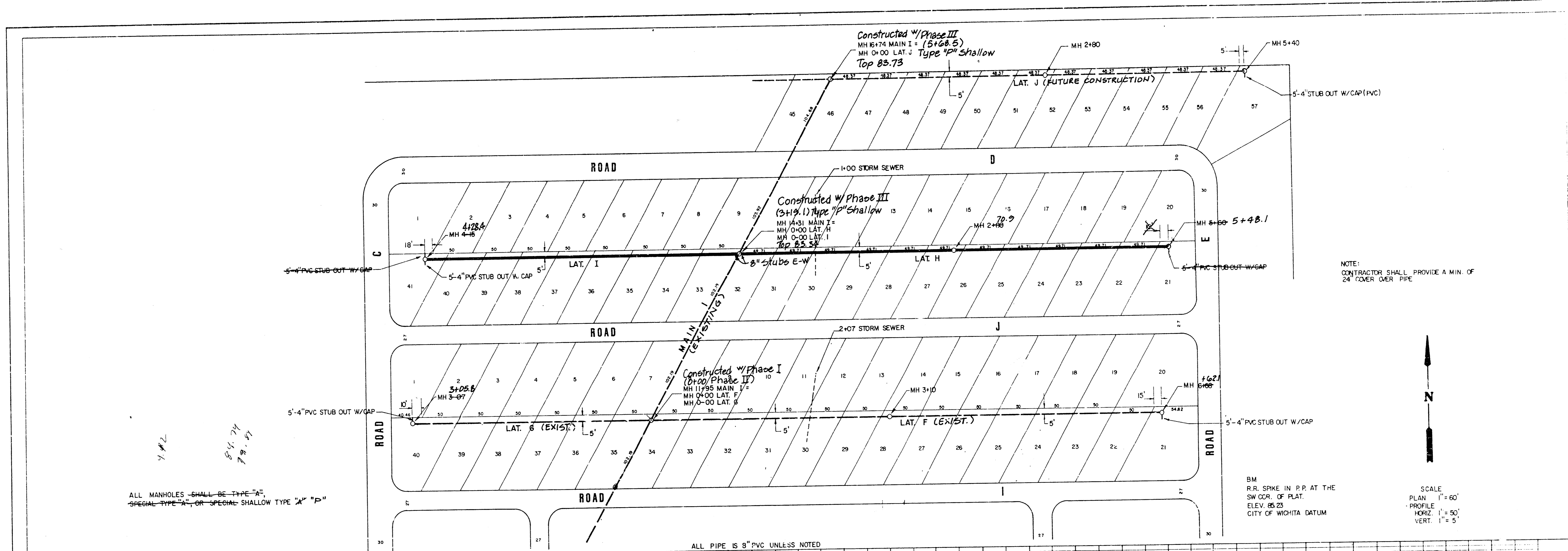
NOTE:
CONTRACTOR HAS THE OPTION OF
USING THE TYPE "C" MANHOLE WITH
APPROVAL OF THE ENGINEER



Phase IV Revised as built 10-9-95 (Lat. I-H) JCR (SRB)
Phase III Revised as built 8-27-92 (Main 1) Sta. 14+31
to 16+74 (3+19.1 to 5+66.5) Boughman Co.
Phase II Revised as built 7-5-90 (Lat. F & G and
Main 1, Sta. 0+00 (11+12) to 3+19.1 (14+31)).

REISS & GOODNESS ENGINEERS
2100 WEST 21ST STREET
WICHITA, KANSAS 67203
(316) 832-0215

REVISION	DRAWN BY	CHECKED BY	DESIGNED BY	PROJECT	CUSTOMER	SCALE	PROJECT NO.
						DATE	SHEET 1 OF 13

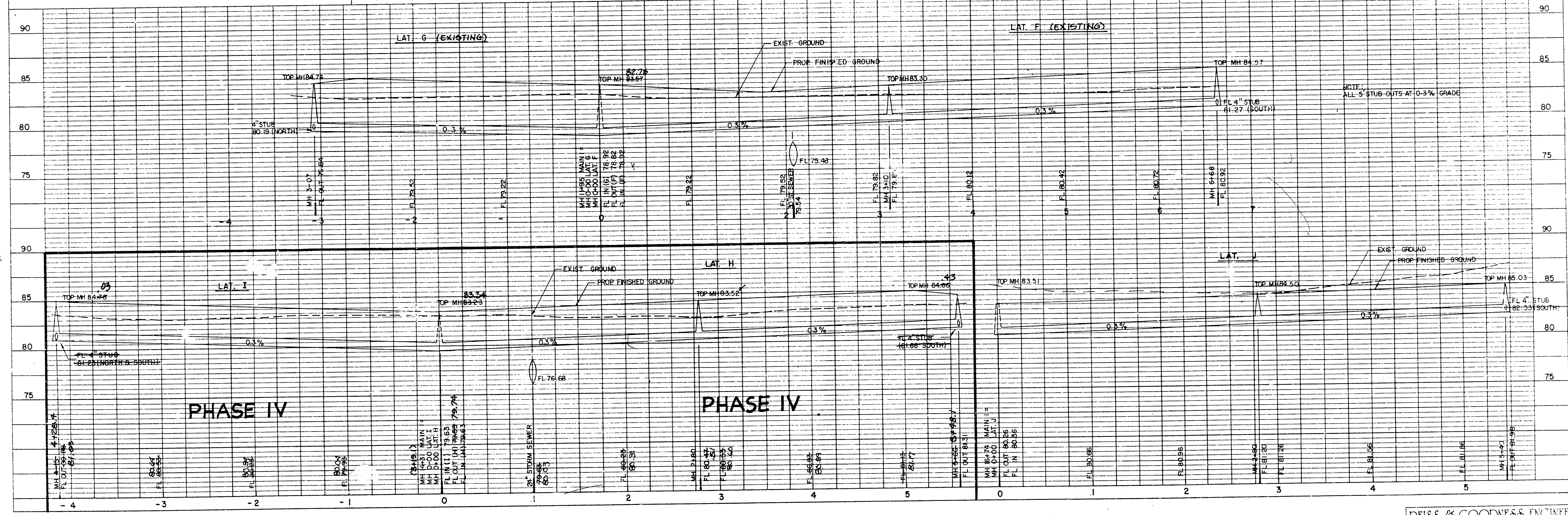


ALL MANHOLES SHALL BE TYPE "A", SPECIAL TYPE "A", OR SPECIAL SHALLOW TYPE "A" "P"

NOTE: CONTRACTOR SHALL PROVIDE A MIN. OF 24" COVER OVER PIPE



SCALE
PLAN 1" = 60'
PROFILE 1" = 50'
VERT. 1" = 5'



PHASE IV

PHASE IV

Revised as built 10-9-95 JCR
As-built notations from previous phases added 8-16-95 JCR (SRB)

REISS & GOODNESS ENGINEERS
2100 WEST 21ST STREET
WICHITA, KANSAS 67203
(316) 832-0213