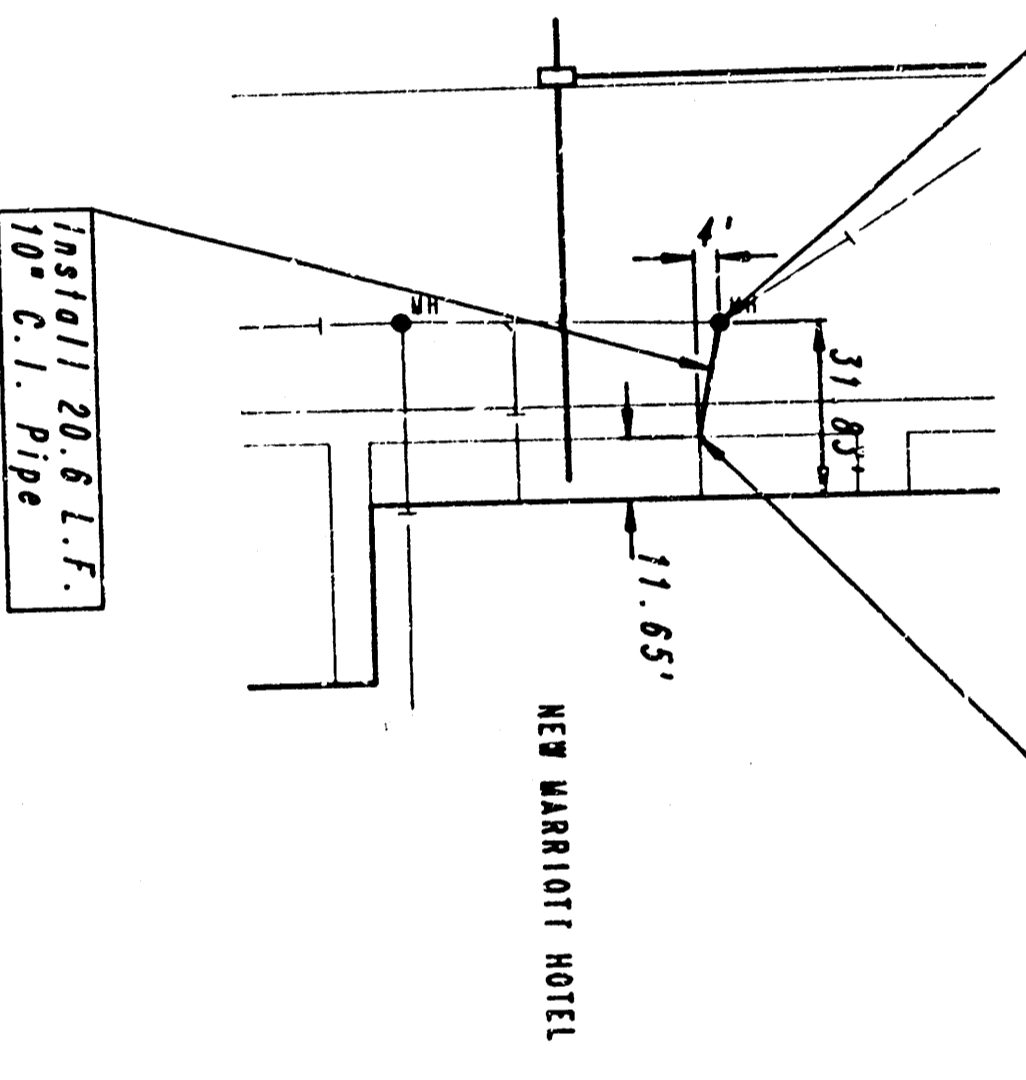


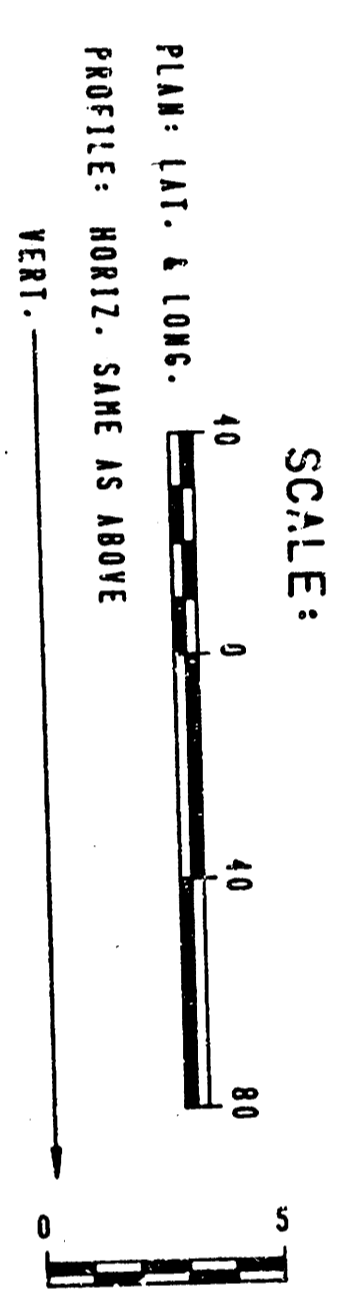
Contractor shall field verify location and elevation of 10" C.I. Sanitary Sewer by others and existing MH prior to beginning construction. Any discrepancies shall be reported to the Engineer and necessary modifications will be made.



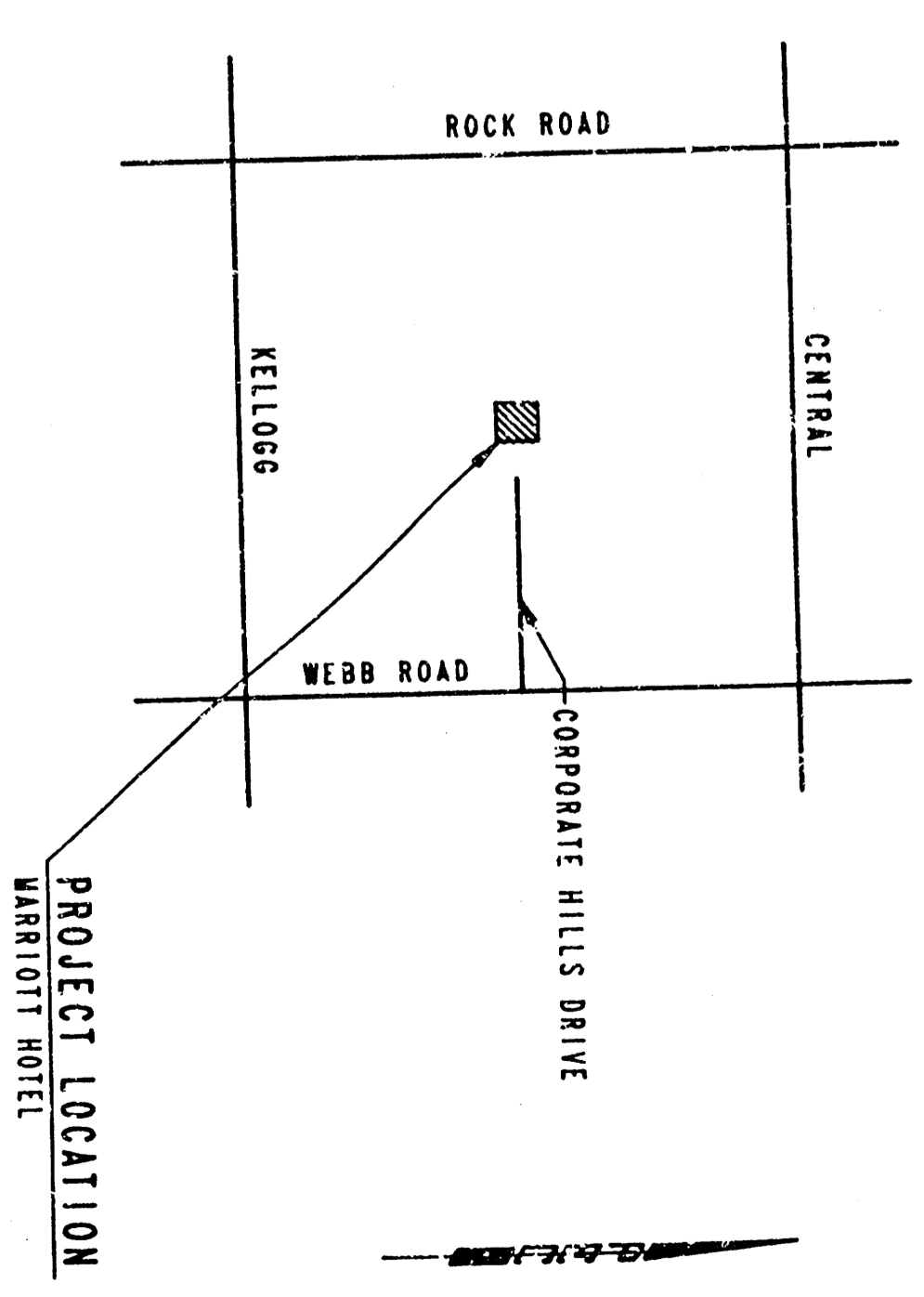
Sta. 0+00.0  
Break into existing MH  
Break new 10" S.S. to place  
under light with non-shrink  
grout. Reslope ground to  
provide smooth flow.

Sta. 0+20.6  
Connect 10" Pipe to 10" C.I.  
Sanitary Sewer by others.

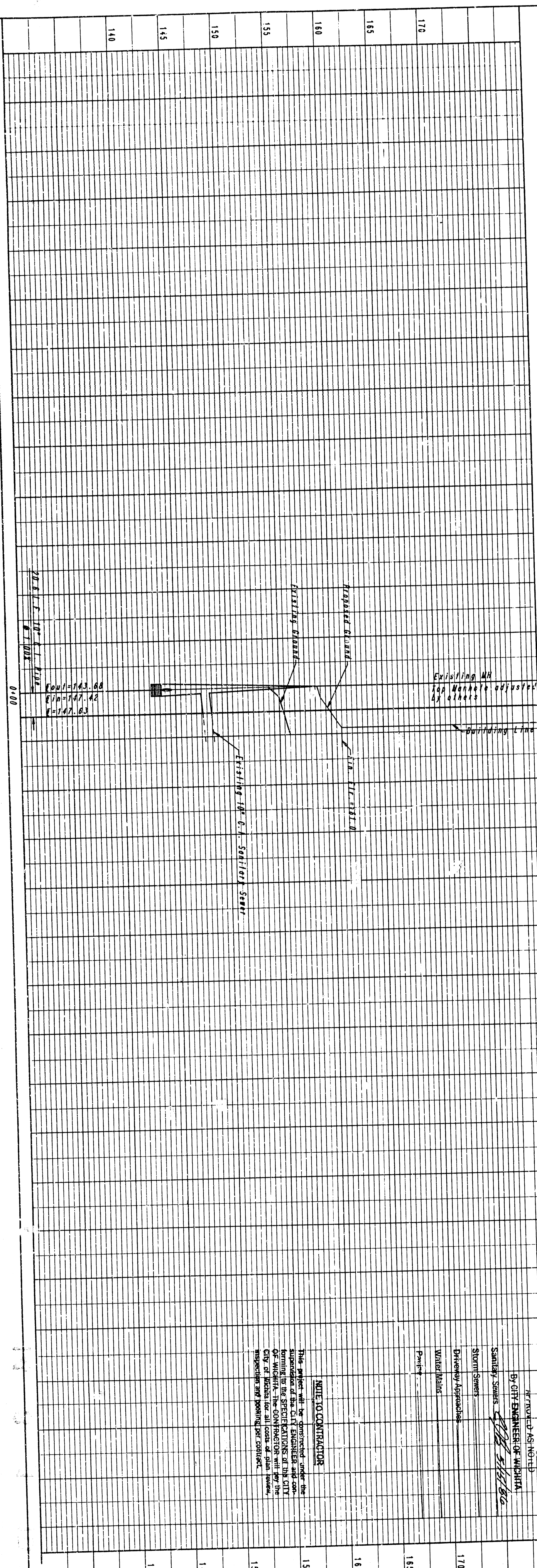
RECH MARK  
at 10th & Hill St. Disc 73.4'  
South 31' East of E. Intersection  
Webb Road & Kellogg Elev. 119.16  
Note: rim of manhole located  
approximately 100' south of  
existing 2'-6" dia. 4' dia. manhole  
at the intersection of  
Webb Road & Hill Addition  
Elev. 150.00



- NOTES
1. ALL CONSTRUCTIONS AND MATERIALS TO COMPLY WITH CITY OF WICHITA SPECIFICATIONS AND STANDARDS.
  2. ALL ELEVATIONS SHOWN ARE WICHITA DATUM.



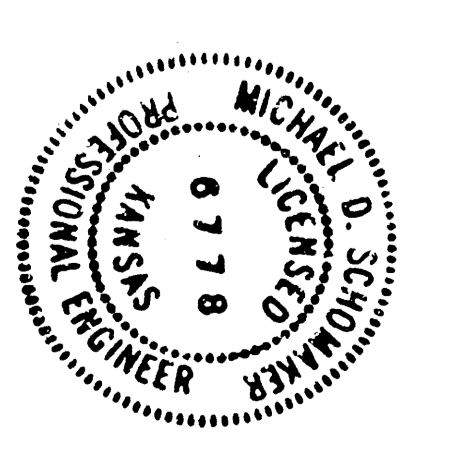
ROOFED



PROFESSIONAL ENGINEERING CONSULTANTS, P.A.  
ENGINEERS  
WICHITA, KANSAS

Designed By MDS, RFJ Job No.  
Drawn By TDS Date May, 1986

CITY OF WICHITA, KANSAS  
MICHAEL E. LINDEBAK P.E., CITY ENGINEER  
SANITARY SEWER IMPROVEMENTS  
MARRIOTT HOTEL 10" BLDG. SEWER  
C.G.W. Proj. No. 468-76-245-80001-000-000-069



NOTE TO CONTRACTOR  
This project will be constructed under the supervision of the City Engineer of the City of Wichita. The CONTRACTOR will pay the City of Wichita for all costs of plan review, inspection and posting per contract.

BY CONTRACT ASSISTED  
By CITY ENGINEER - WICHITA  
Sanitary Sewer  
Storm Sewer  
Driveway Approaches  
Water Mains  
Pavement

FILMED FROM THE BEST  
AVAILABLE COPY