

Bench Mark: R.R. Spike in North side Power Pole @ 211 feet East of the Southeast corner of Douglas Ave. & Arcadia. Elev. 144.00

Plug & Abandon 112.3 LF of existing pipe and fill with sand.

Do not Remove or Disturb Conc. Driveway

Scale
Plan 1" = 20'
Profile 1" = 5'

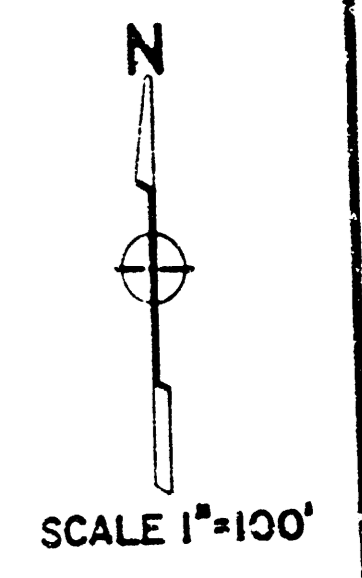
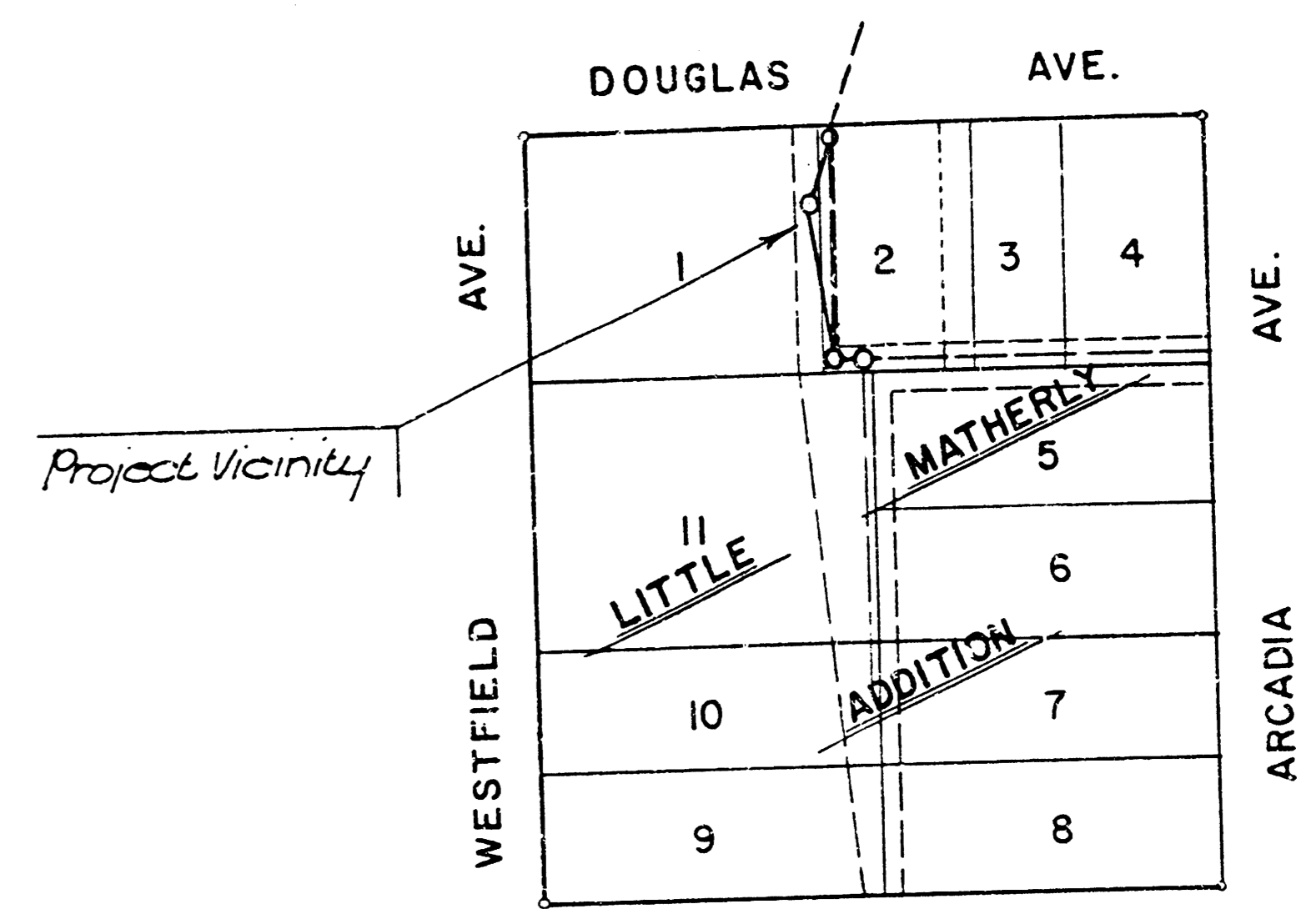
Station of 0+00 Existing MH, Plug pipe South and Begin Construction.

2' Utility Easement by Sep. Instrument

Station 115.3 Existing MH, Plug pipe North and End Construction.

Station of 38.1 Construct std. type 'P' or 'C' Manhole. Top 155.35

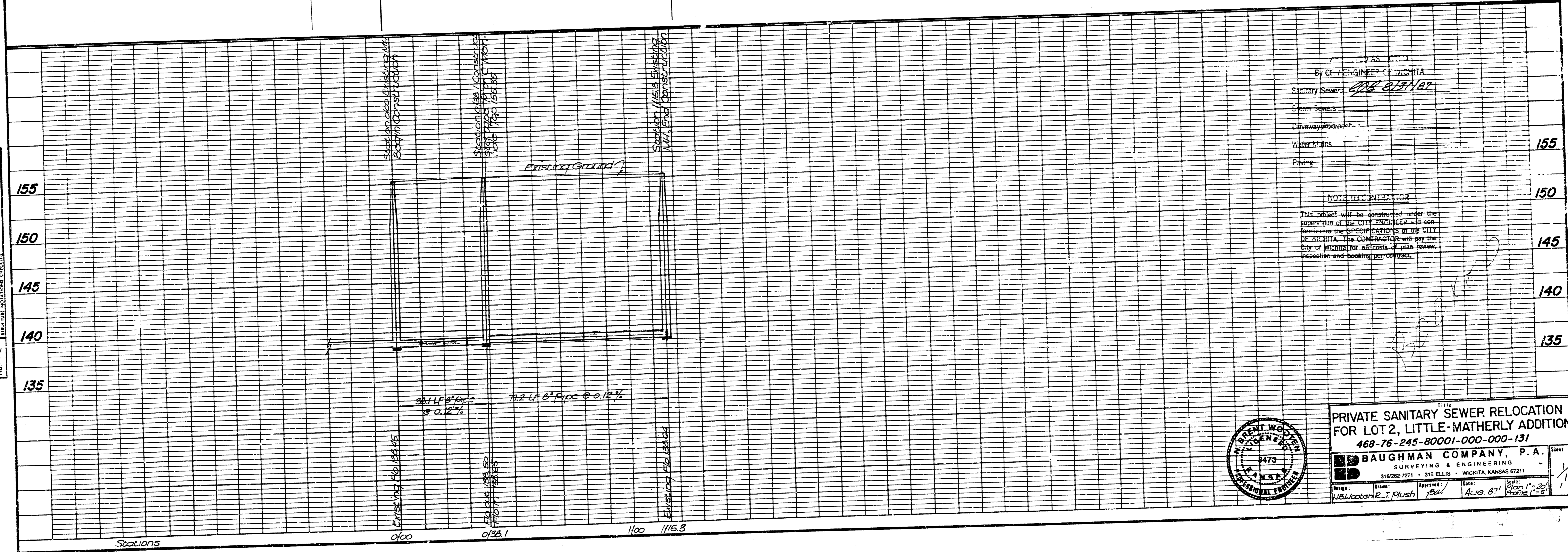
Remove & Replace Trees only as Necessary for Construction.



NOTE: Contractor to maintain flow through the sewer line at all times during construction.
Contractor to contact all Utility Companies 48 hours prior to construction to verify any conflicts w/ utilities.
Contractor to contact Property Owner of Lot 1, 48 hours prior to construction.

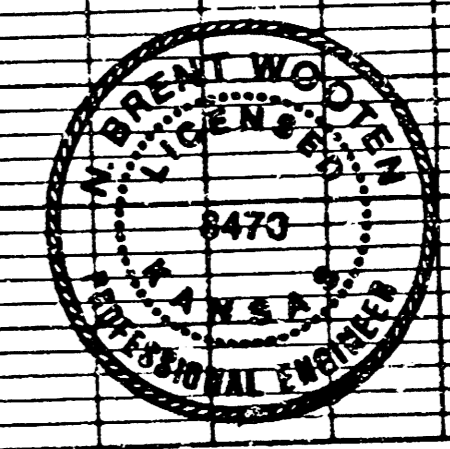
PLAN	NO. 1
PROFILE	NO. 1
SECTION	NO. 1
DATE	

PROFILE	NO. 1
SECTION	NO. 1
DATE	



AS NOTED	
By City ENGINEER WICHITA	
Sanitary Sewers	2/17/87
Storm Sewers	
Driveway	
Water Mains	155
Paving	150

NOTE TO CONTRACTOR
THIS PROJECT WILL BE CONSTRUCTED UNDER THE SUPERVISION OF THE CITY ENGINEER AND CONFORM TO THE SPECIFICATIONS OF THE CITY OF WICHITA. THE CONTRACTOR WILL PAY THE CITY OF WICHITA FOR ALL COSTS OF PLAN REVIEW, INSPECTION AND BOOKING PER CONTRACT.



PRIVATE SANITARY SEWER RELOCATION FOR LOT 2, LITTLE-MATHERLY ADDITION
468-76-245-80001-000-000-131
BAUGHMAN COMPANY, P.A.
SURVEYING & ENGINEERING
316262-7211 315 ELLS WICHITA, KANSAS 67211
Design: WBL/ocm Date: 8/27/87
Drawn: J. Plush
Checked: [Signature]
Scale: Plan 1" = 20' Profile 1" = 5'

FILMED FROM THE BEST AVAILABLE COPY