

1-23-84

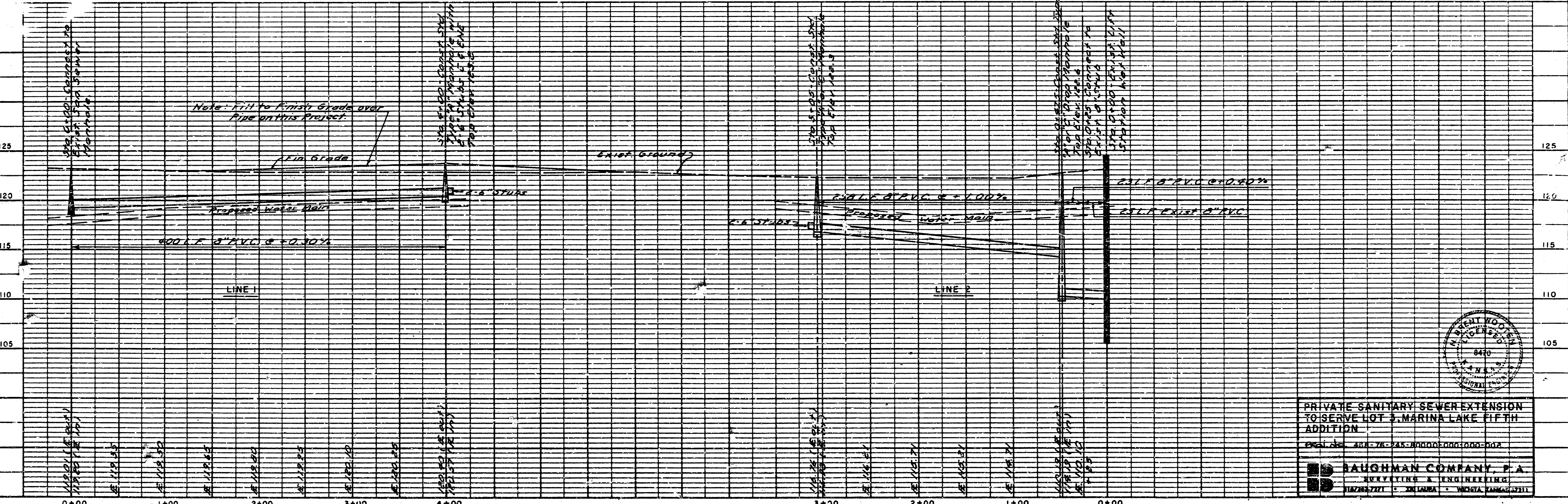
APPROVED AS NOTED
By CITY ENGINEER OF WICHITA

Sanitary Sewers
Storm Sewers
Driveway Approaches

NOTE TO CONTRACTOR

This project is to be constructed under the supervision of the CITY ENGINEER and the approval of the SUPERVISOR of the CITY ENGINEER. The CONTRACTOR shall pay the City of Wichita for all costs of inspection.

B.M. "DRY" in DRYTOP Fire Hydrant
35' West & 20' North Manhole
@ Sta. 0+00 - Line 1, Elev. 124.99



PRIVATE SANITARY SEWER EXTENSION TO SERVE LOT 3, MARINA LAKE FIFTH ADDITION

PROJECT NO. 254-76-245-00000-000-002

BAUGHMAN COMPANY, P.A.
SURVEYING & ENGINEERING
1127282-7271 • 200 LAUREL • WICHITA, KANSAS 67211