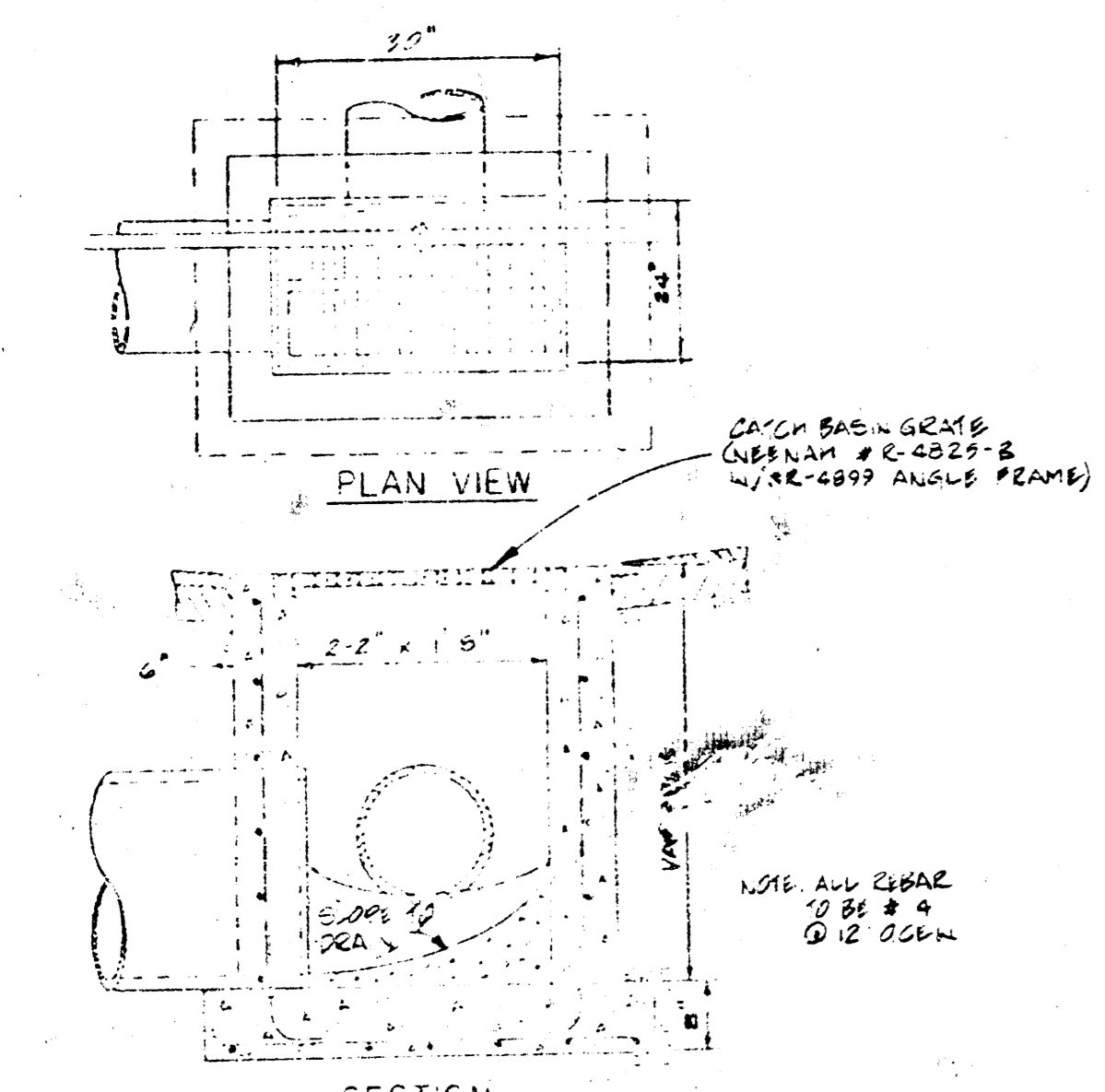
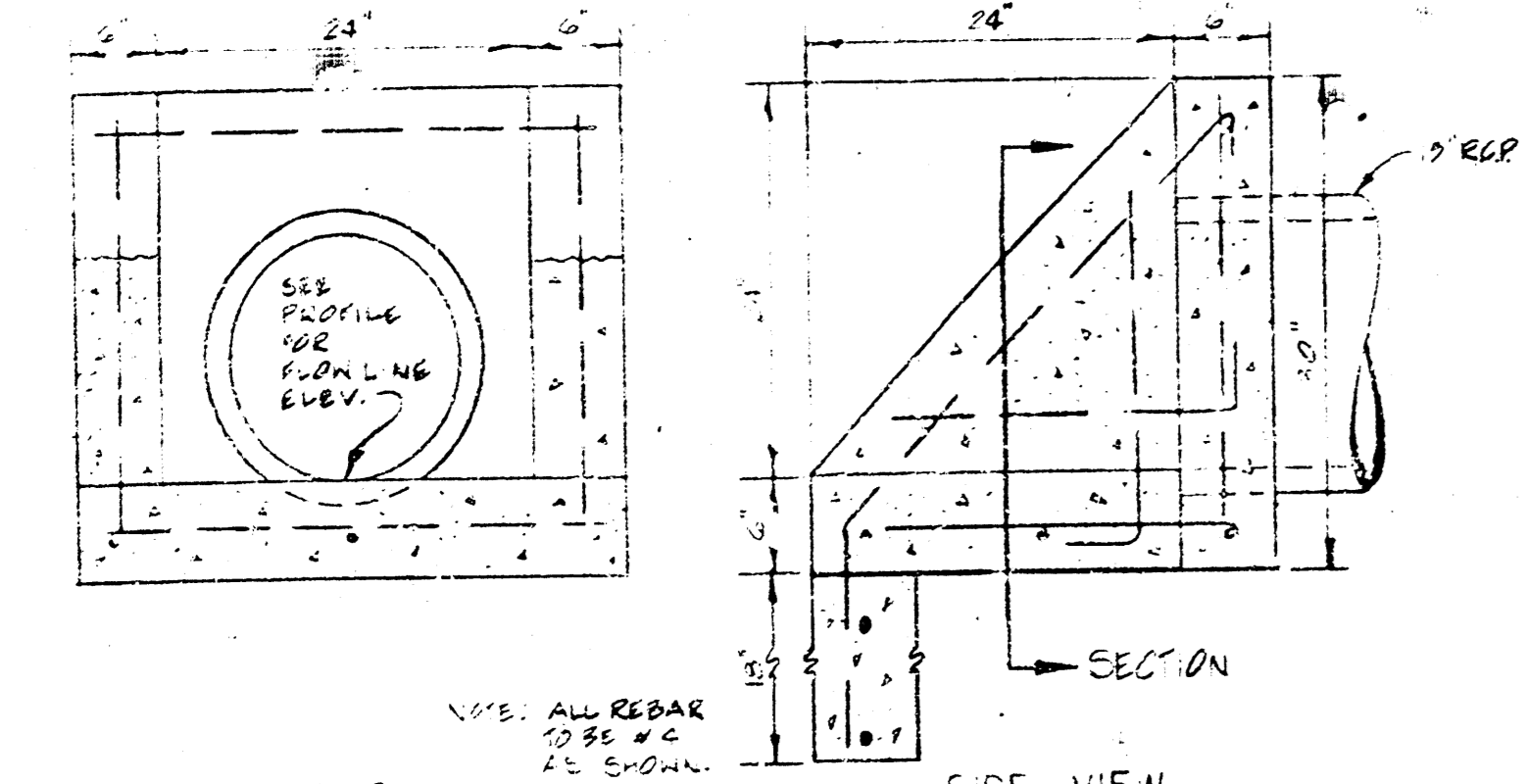


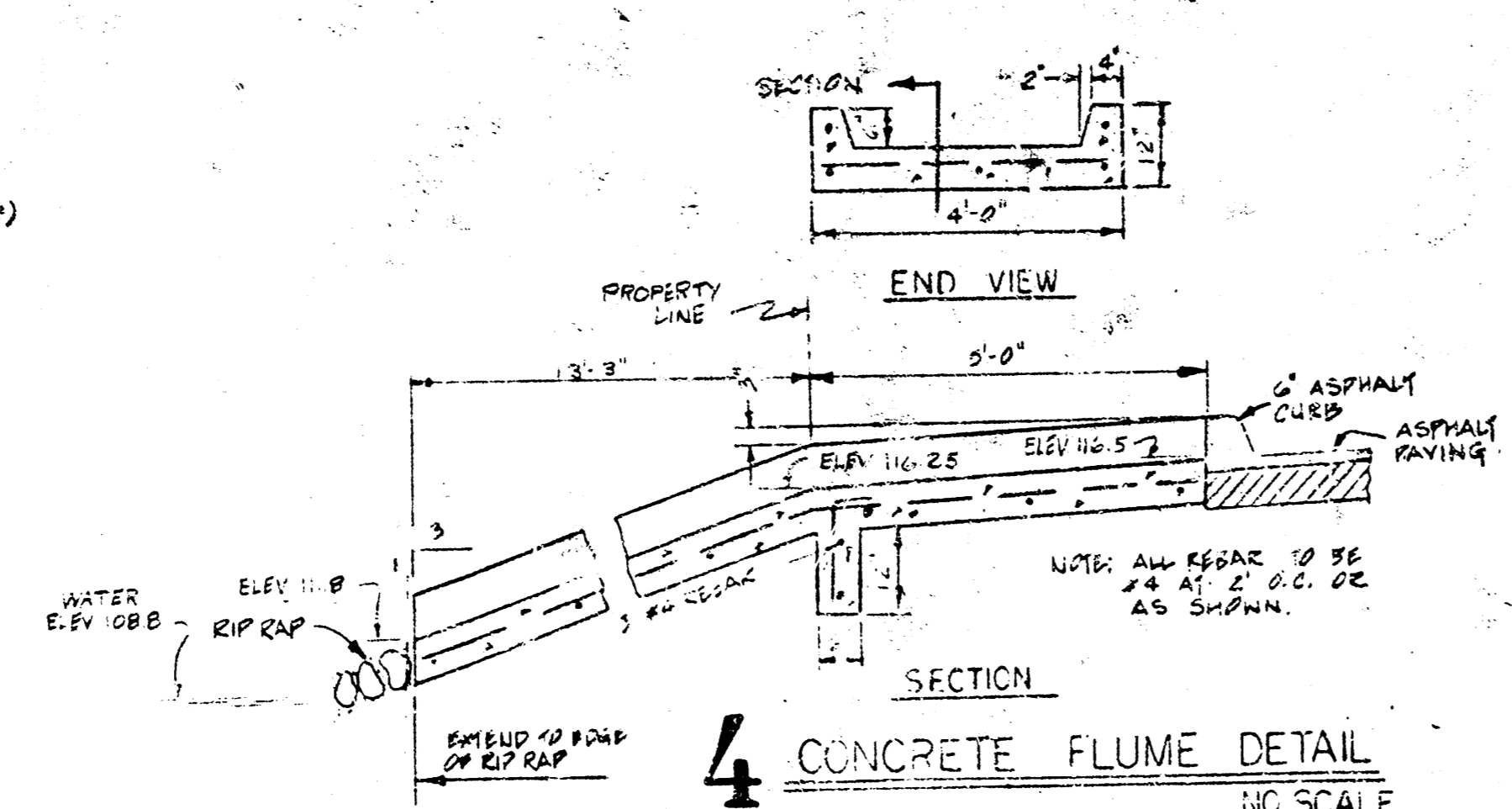
**1 CATCH BASIN TYPE 'B'**  
NO SCALE



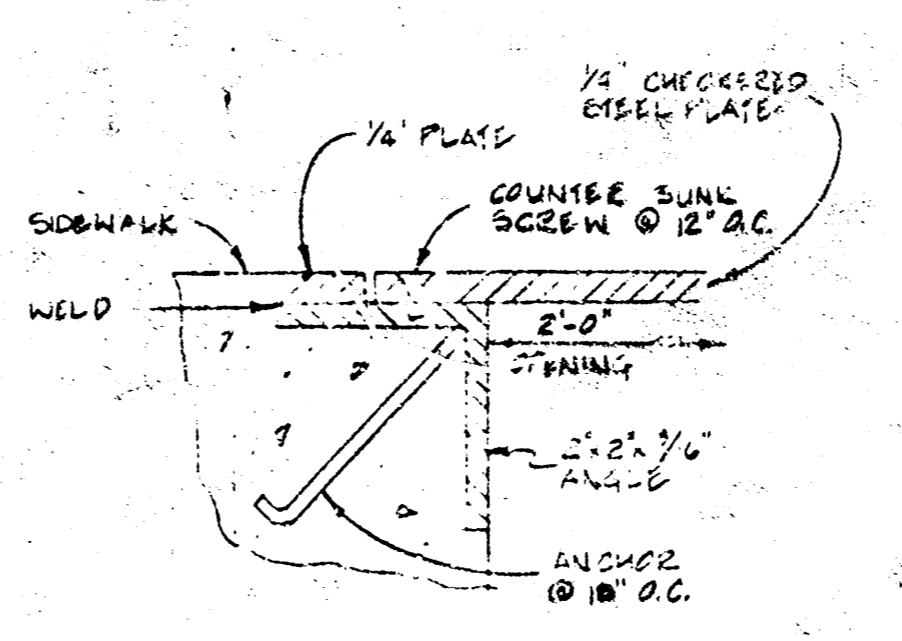
**2 CATCH BASIN TYPE 'A'**  
NO SCALE



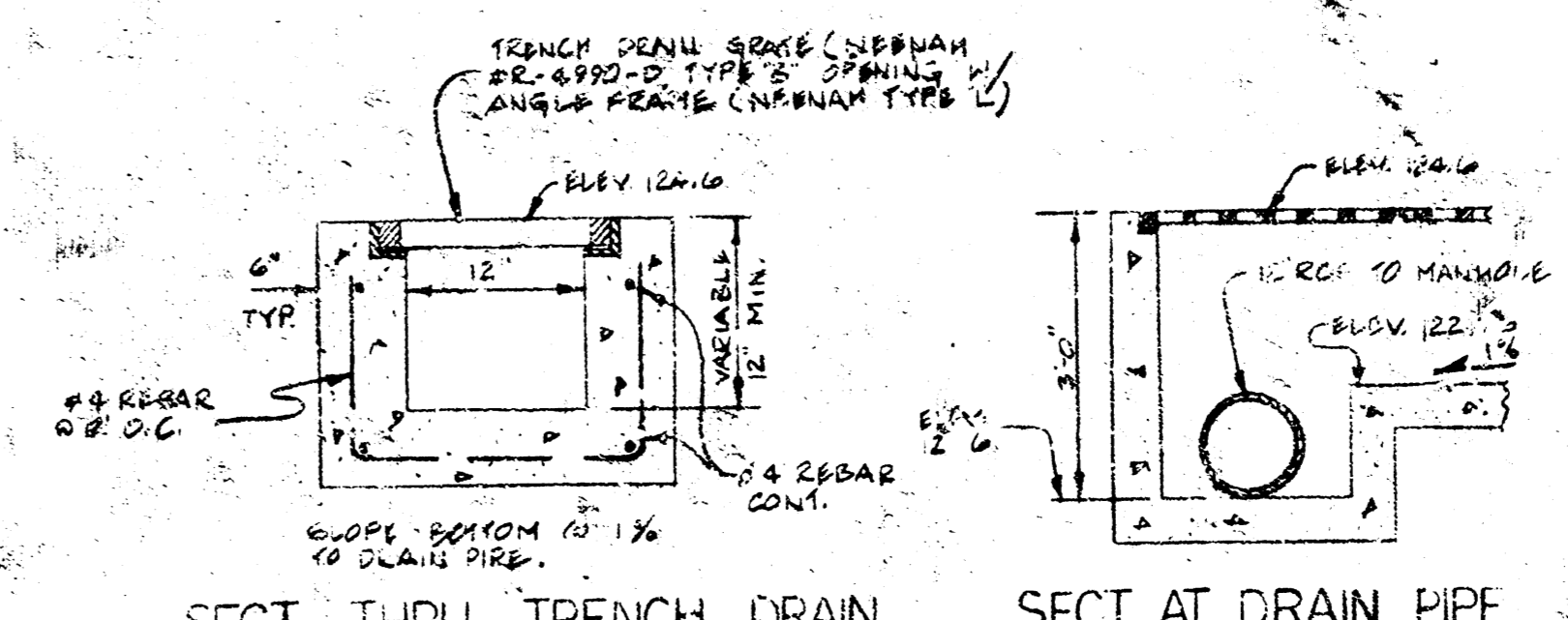
**3 15' HEADWALL DETAIL**  
NO SCALE



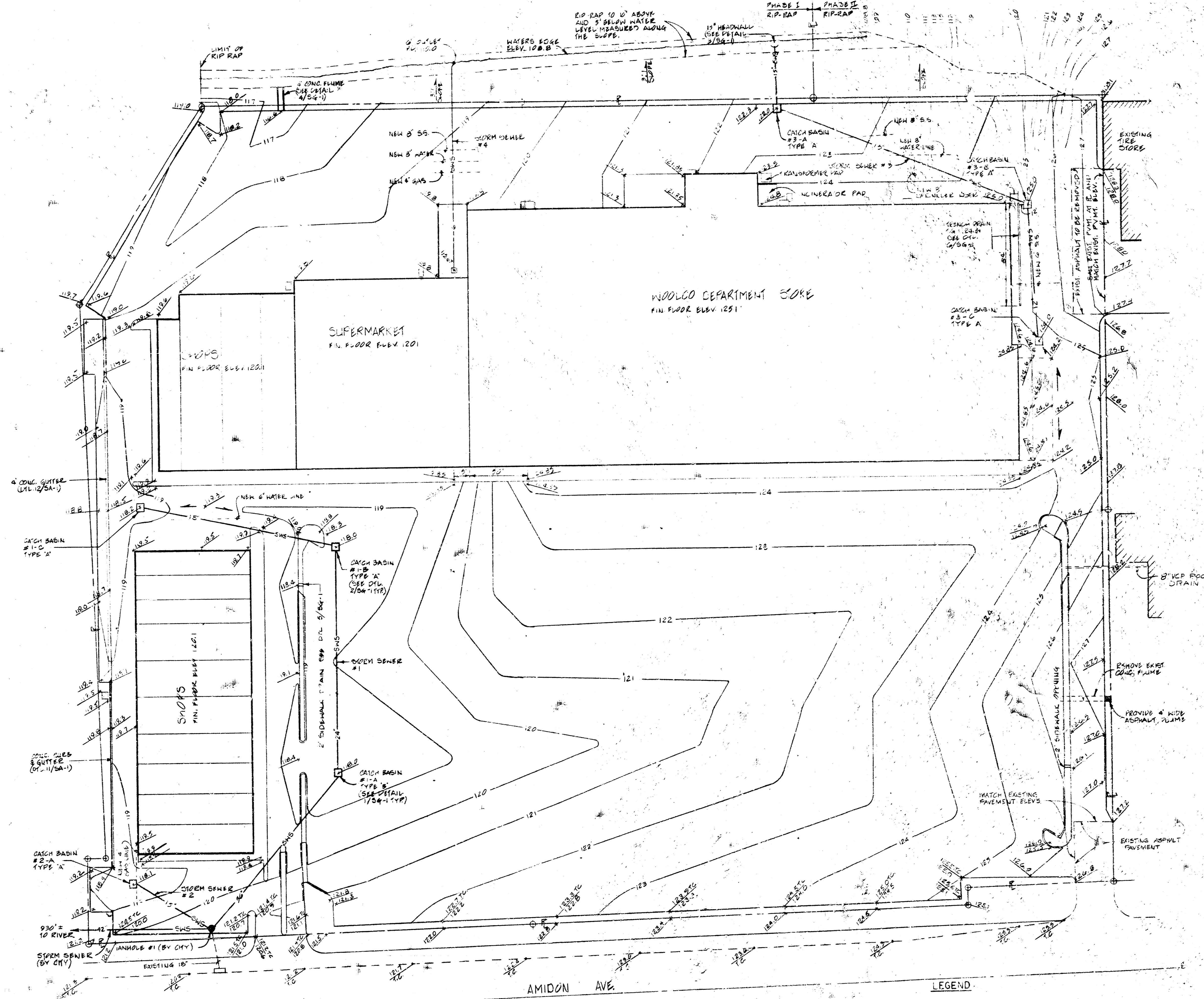
**4 CONCRETE FLUME DETAIL**  
NO SCALE



**5 SIDEWALK OPENING**  
NO SCALE



**6 TRENCH DRAIN DTL.**  
NO SCALE



BENCH MARK:  
ELEV. 1279.9 CITY 510.  
BOARD CAP NINE CORNER  
ANGLER ST. BRIDGE.

**SITE GRADING PLAN**  
1"=40'-0"

**LEGEND**

- 125 --- EXISTING CONTOUR LINE
- 120 --- NEW CONTOUR LINE
- 120.0 --- EXISTING SPOT ELEV.
- 120.0 --- NEW SPOT ELEV.
- 120.0 --- MANHOLE
- 120.0 --- CATCH BASIN
- 120.0 --- STORM CENTER LINE
- 120.0 --- DRAINAGE

PRINTS ISSUED		
DATE	PURPOSE	NO.
2-10-72	FOR TENDENT INFORMATION	1
3-10-72	FOR CITY APPROVAL	2
3-24-72	FOR CITY APPROVAL	3
4-25-72	FOR CITY APPROVAL	4
5-9-72	FOR CONSTRUCTION	5
7-1-72	FOR CONSTRUCTION	6

**FOR CONSTRUCTION:** 5-9-72

REVISIONS		
DATE	ITEM	NO.
7-1-72	FOR CONSTRUCTION	5

**THE LAW COMPANY**

CALVIN LINDEN, P.A. ARCHITECTS & ENGINEERS  
313 S. W. 11th St., Wichita, Kansas 67202  
PHONE: (316) 262-8800

DRAWN	CHECKED
DUTTON	KCF

**RELATED DRAWINGS**

SHELL	
DETAILS	
STRUCTURE	
MECHANICAL	
ELECTRICAL	
OTHER	

SEQUENCE NUMBER \_\_\_\_\_ OF \_\_\_\_\_ SHEETS

**MARINA LAKES SHOPPING CENTER**

WICHITA, KANSAS

PROJECT NUMBER 7201

KEY PLAN

TENANT

**SITE GRADING PLAN**

SHEET TITLE

TENANT NUMBER

**SG-1**

OF \_\_\_\_\_ SHEETS