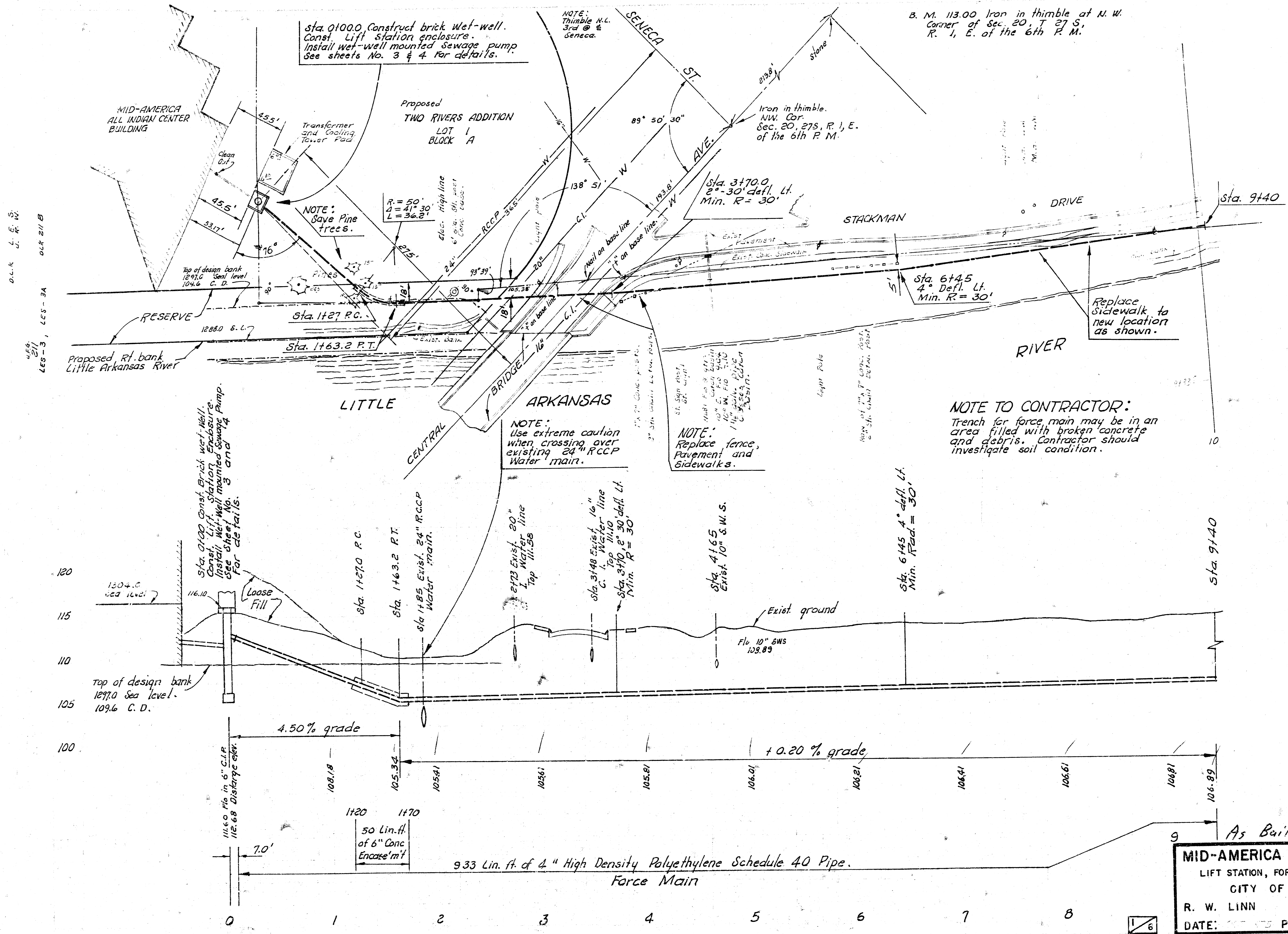


Plan Scale 1" = 40'  
Profile Scale 1" = 40' Horiz.  
1" = 5' Vert.



Sta. 0+00.0 Construct brick wet-well. Const. Lift station enclosure. Install wet-well mounted sewage pump. See sheets No. 3 & 4 for details.

NOTE: Thimble N.L. 3rd @ Seneca.

B. M. 113.00 Iron in thimble at N.W. Corner of Sec. 20, T. 27 S., R. 1, E. of the 6th P. M.

NOTE: Save Pine trees.

Sta. 3+70.0 2'-30" defl. Lt. Min. R = 30'

Sta. 6+45 4' Defl. Lt. Min. R = 30'

Replace sidewalk to new location as shown.

NOTE: Use extreme caution when crossing over existing 24" R.C.C.P. Water main.

NOTE: Replace fence, Pavement and Sidewalks.

NOTE TO CONTRACTOR: Trench for force main may be in an area filled with broken concrete and debris. Contractor should investigate soil condition.

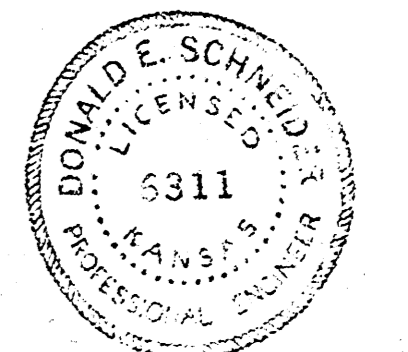
Sta. 0+00.0 Const. Brick wet-well. Const. Lift Station Enclosure. Install Wet-well mounted Sewage Pump. See Sheet No. 3 and 4 for details.

top of design bank 109.6 Sea level. 109.6 C.D.

116.0 ft. 6" C.I.P. 112.68 Discharge elev.

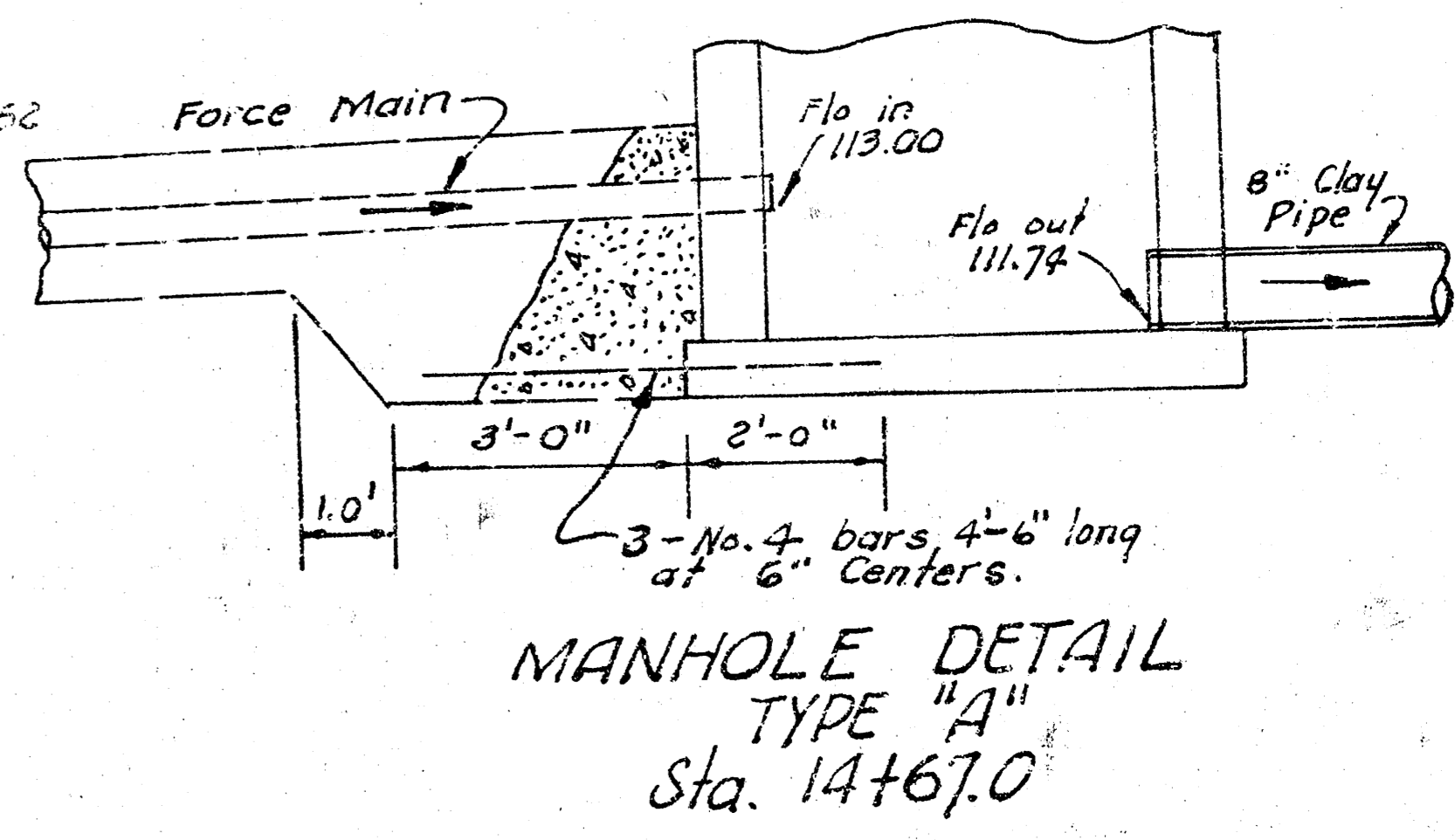
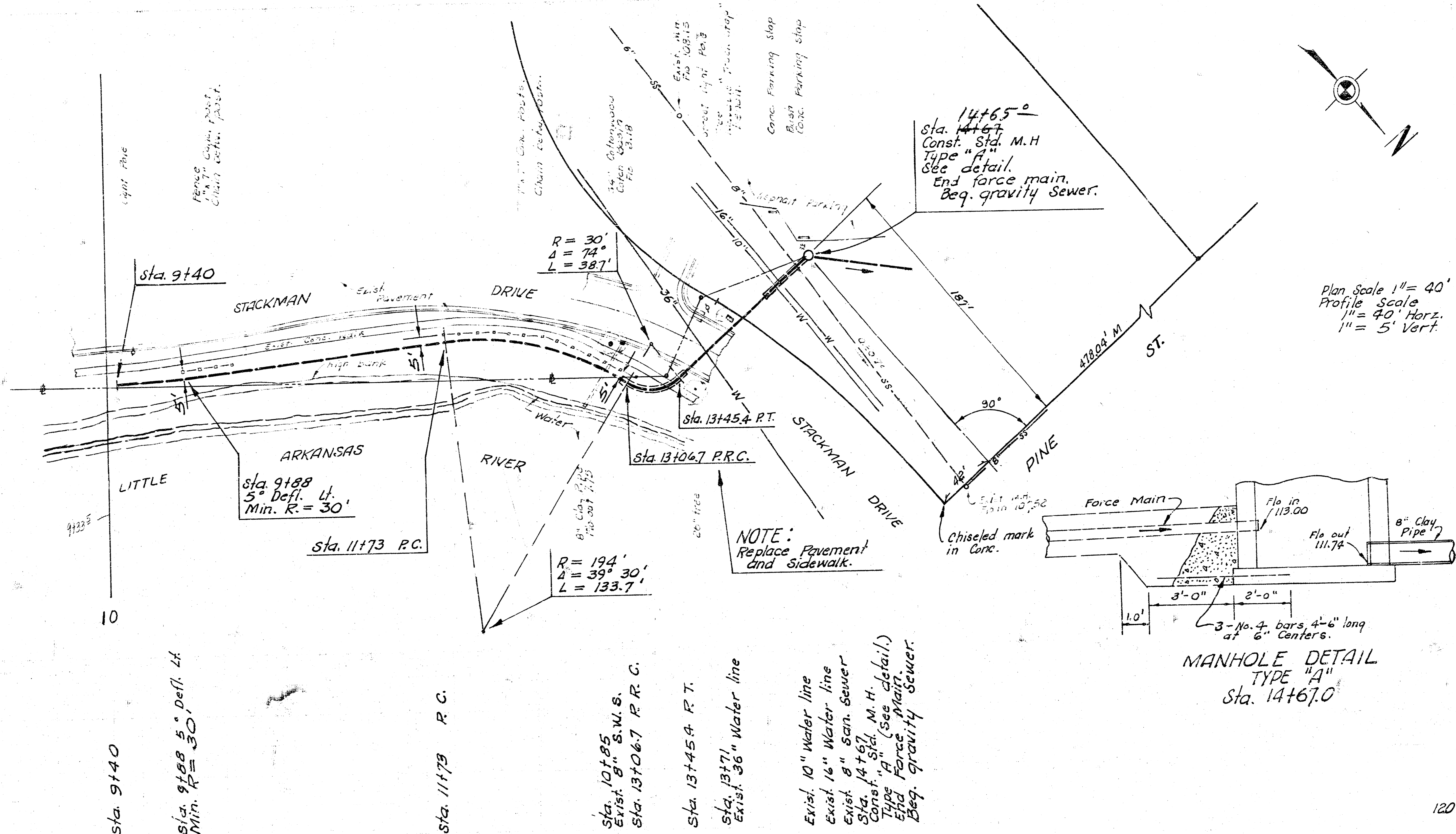
50 Lin. ft. of 6" Conc. Encase'm't

933 Lin. ft. of 4" High Density Polyethylene Schedule 40 Pipe. Force Main



As Built 3-26-76  
**MID-AMERICA ALL INDIAN CENTER**  
LIFT STATION, FORCE MAIN AND SANITARY SEWER  
CITY OF WICHITA, KANSAS  
R. W. LINN — CITY ENGINEER  
DATE: PROJECT NO. WMKB525430

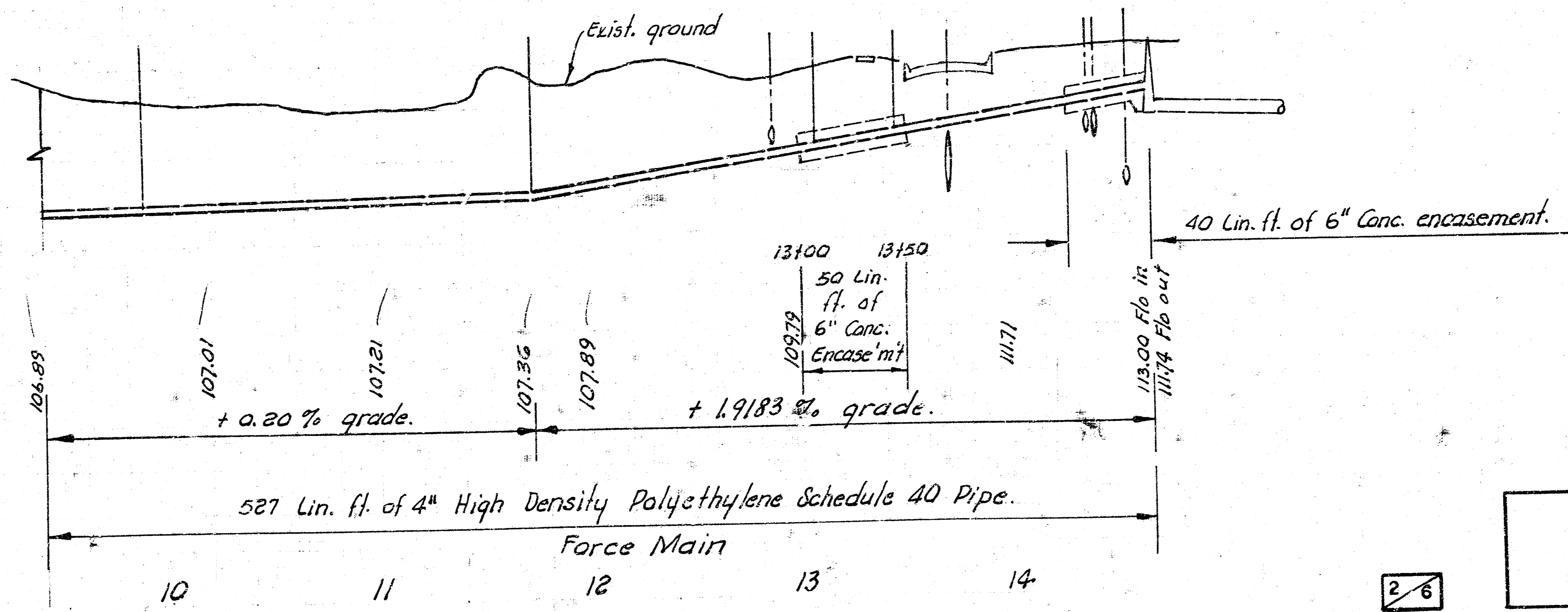
B. M. 114.78 "D" Top N. cb Pine  
 @ E 1/2 walk N. on W. L.  
 Stackman Dr.



LES-5A

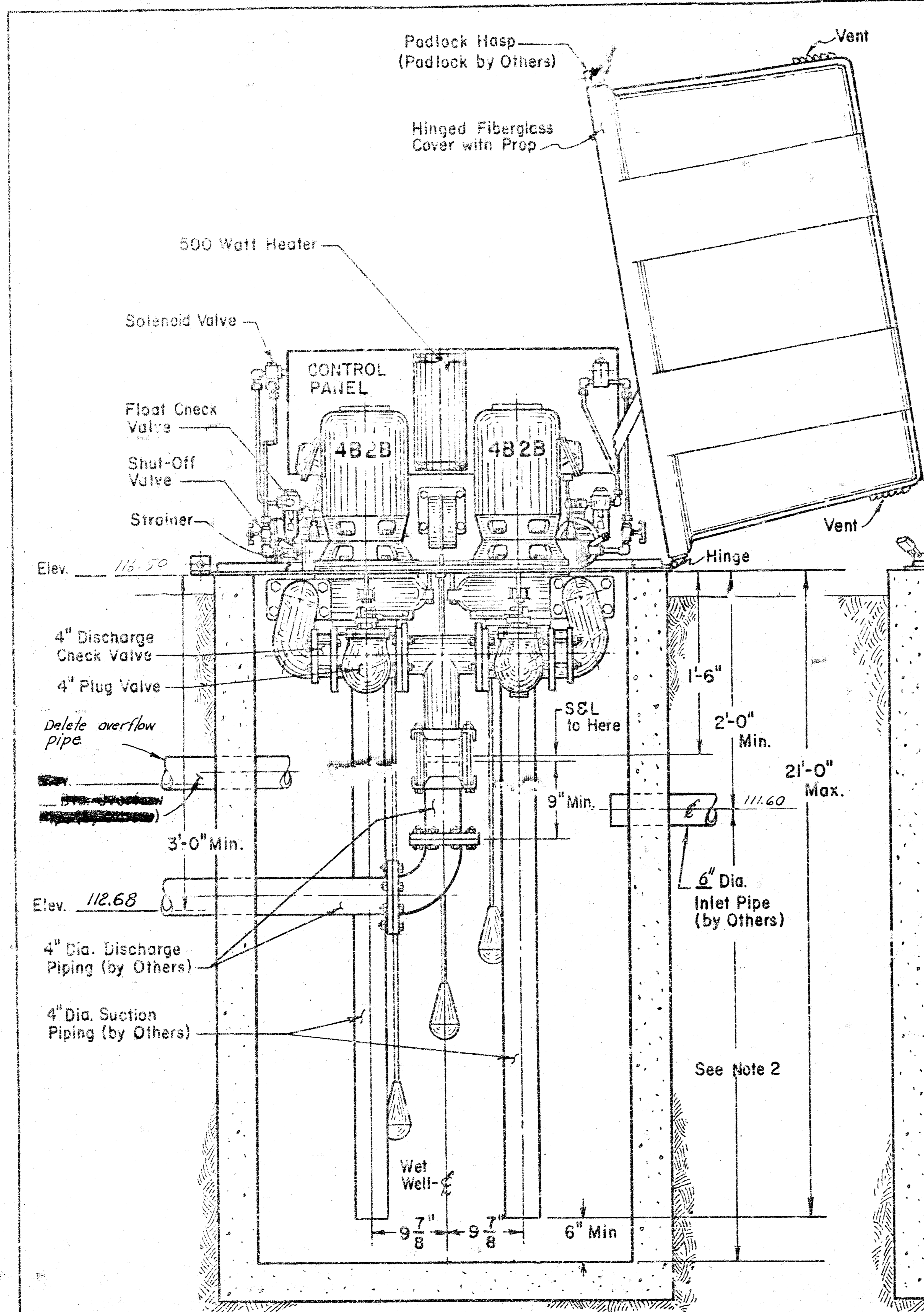
120  
115  
110  
105  
100

120  
115  
110  
105  
100

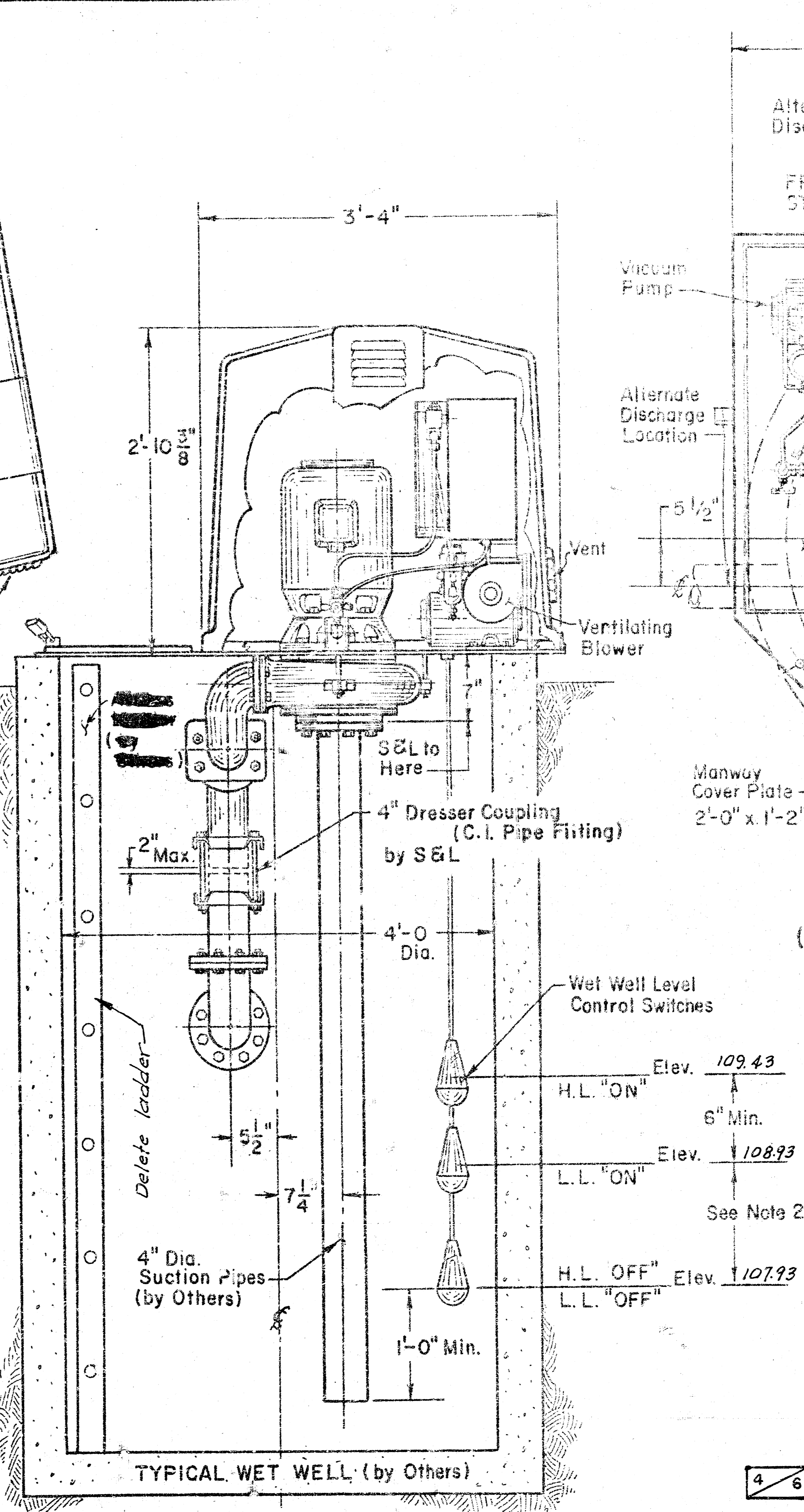


MID-AMERICA ALL INDIAN CENTER  
 LIFT STATION AND FORCE MAIN  
 PROJECT NO. WMKB525430 2/6

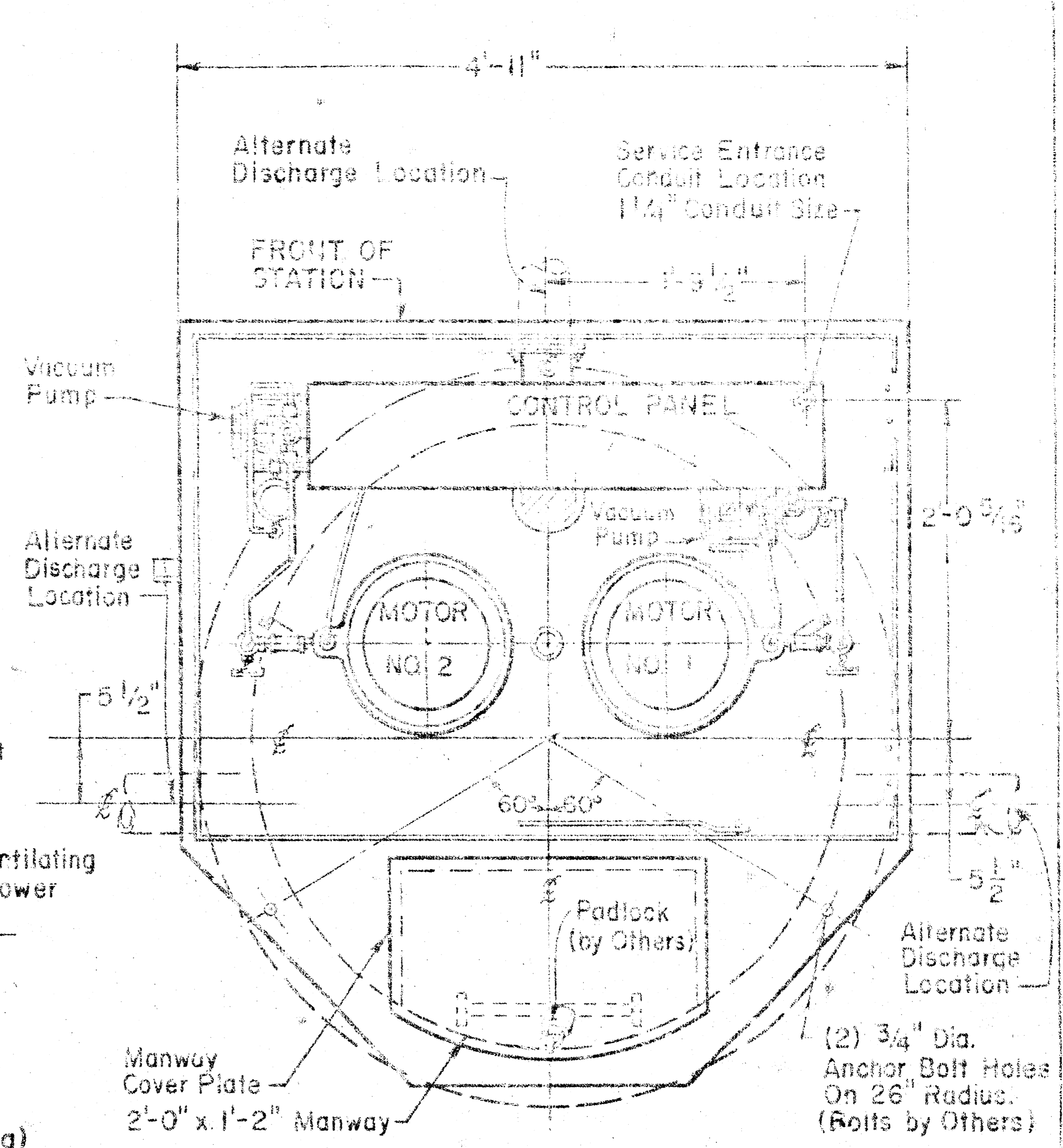




SECTIONAL ELEVATION



CROSS SECTION



PLAN VIEW  
MACHINERY CHAMBER  
(COVER DELETED FOR CLARITY)

- NOTES:-
1. Maximum Capacity - 300 G.P.M.
  2. Allow One Minute Cycle Time, Based On Wet Well Capacity of 9.4 Gal. Per Foot.
  3. If End of Discharge Line is Below Elevation of Discharge Line at Point of Leaving Wet Well, Consult Factory.
- PATENTED IN THE U.S.A. & FOREIGN COUNTRIES

DRAWING NO. 66 B 101  
(11" D" SIZE DWG. 86D104)

N7C-70		DIMENSIONS ARE IN INCHES UNLESS OTHERWISE NOTED		 Rockwell Corporation Smyth & Lovell, S. Townsend 10000 Rockwell Drive Laguna Hills, CA 92653	
DATE	BY	DATE	BY	DATE	BY
7-14-70	HASLAM	7-21-70	OSBORNE	7-21-70	MARTIN
WET-Well MOUNTED SEWAGE PUMP LIFT STATION		SCALE: NONE		SERIAL NO.	
DRAWING NO. 66 B 101		PROJECT NO. WMKB525 430		DRAWING NO. 86D104	

MID-AMERICA ALL INDIAN CENTER  
LIFT STATION AND FORCE MAIN  
PROJECT NO. WMKB525 430

B. M. 113.00 Iron in thimble of N.W. corner of Sec. 20, T27S, R. 1, E. of the 6th P. M.  
 B. M. 114.78 "a" top N. curb Pine St @ 4' walk N. on west line Stackman Drive.

**NOTE:**  
 Removal and Replacement of conc. Areas north of Right-of-way line on Pine St. shall be paid as conc. slab removed and Replaced.

Sta. 0+00.0 Existing manhole. Beg. removal of exist. 6" S.S.  
 Remove exist. manhole. Const. new manhole Type "A" or "C"

**CAUTION:**  
 Sta. 0+94 Exist. K. G. & E. Underground conduit.

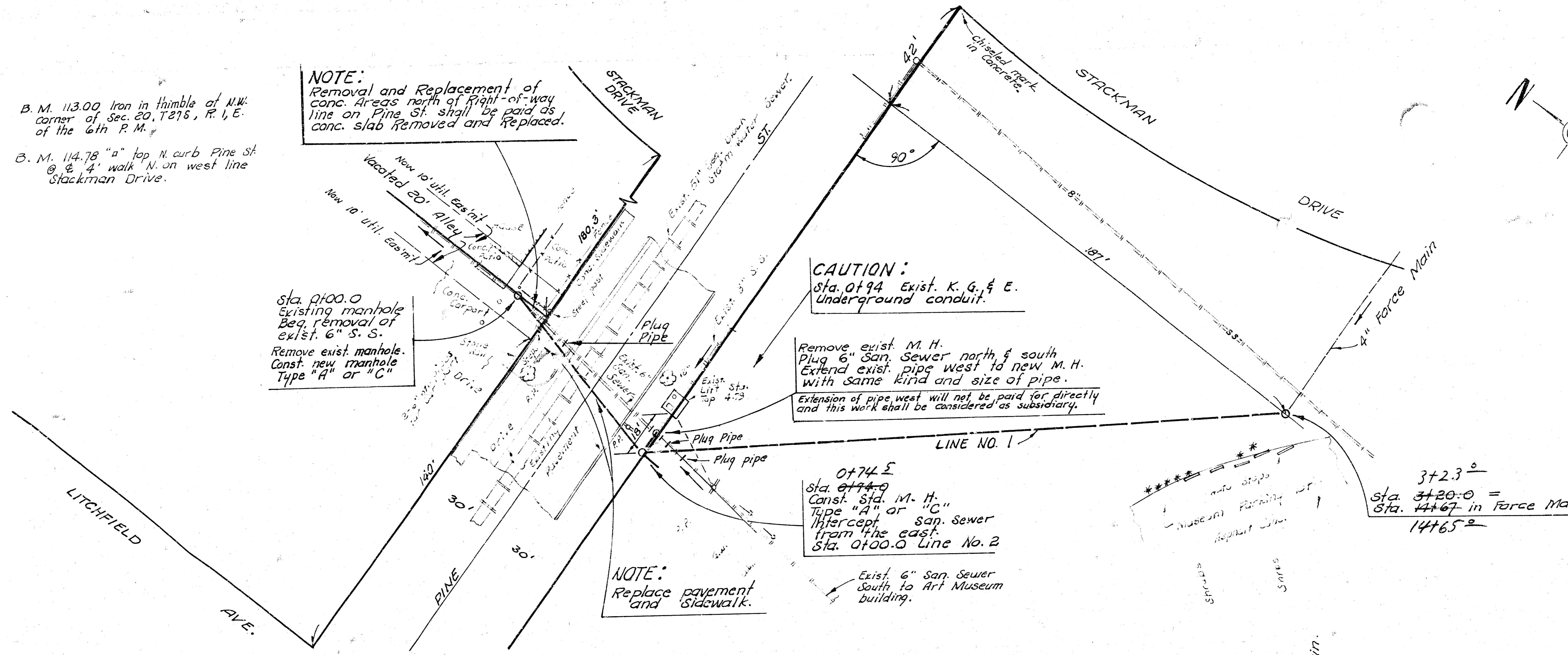
Remove exist. M. H. Plug 6" San. Sewer north & south. Extend exist. pipe west to new M. H. with same kind and size of pipe.  
 Extension of pipe west will not be paid for directly and this work shall be considered as subsidiary.

0+74.5  
 Sta. 0+74.0 Const. Sta. M. H. Type "A" or "C" Intercept San. Sewer from the east. Sta. 0+00.0 Line No. 2

**NOTE:**  
 Replace pavement and sidewalk.

Exist. 6" San. Sewer South to Art Museum building.

Plan Scale 1" = 20'  
 Profile Scale 1" = 20' Horiz.  
 1" = 5' Vert.



3+2.3  
 Sta. 3+20.0 = Sta. 4+67 in Force Main.  
 14+65

Sta. 0+00.0 Exist. M. H. Beg. removal of exist. 6" San. Sewer. Remove exist. M. H. Const. new Manhole Type "A" or "C".  
 Exist. 5" clay sewer s.w. S.  
 Sta. 0+74.0 Const. Sta. M. H. Type "A" or "C" Intercept San. Sewer from the east. Sta. 0+00.0 Line No. 2. Sta. 0+94 Exist. K. G. & E. Underground Conduit.

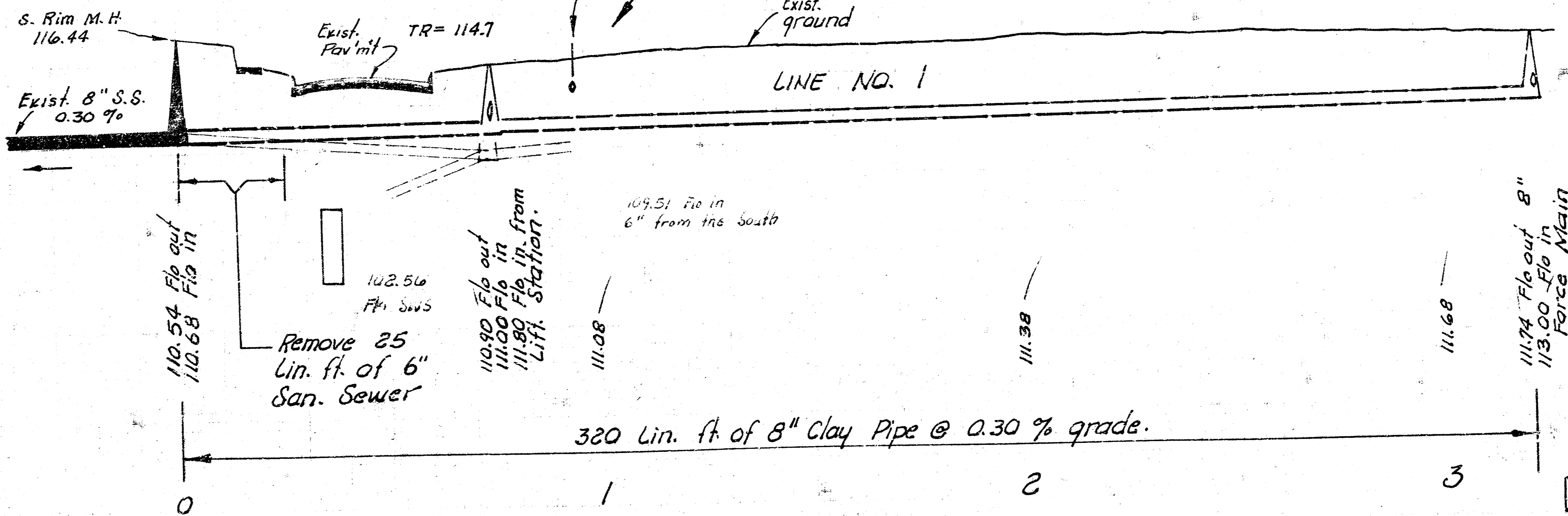
**CAUTION:**  
 K. G. & E. Underground conduit.

Sta. 3+20.0 = Sta. 4+67 in force main.

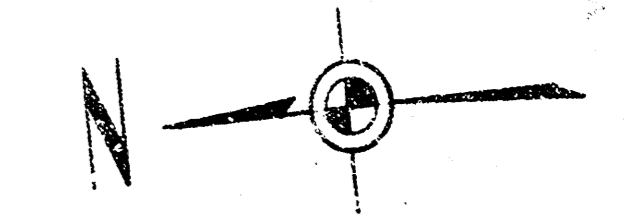
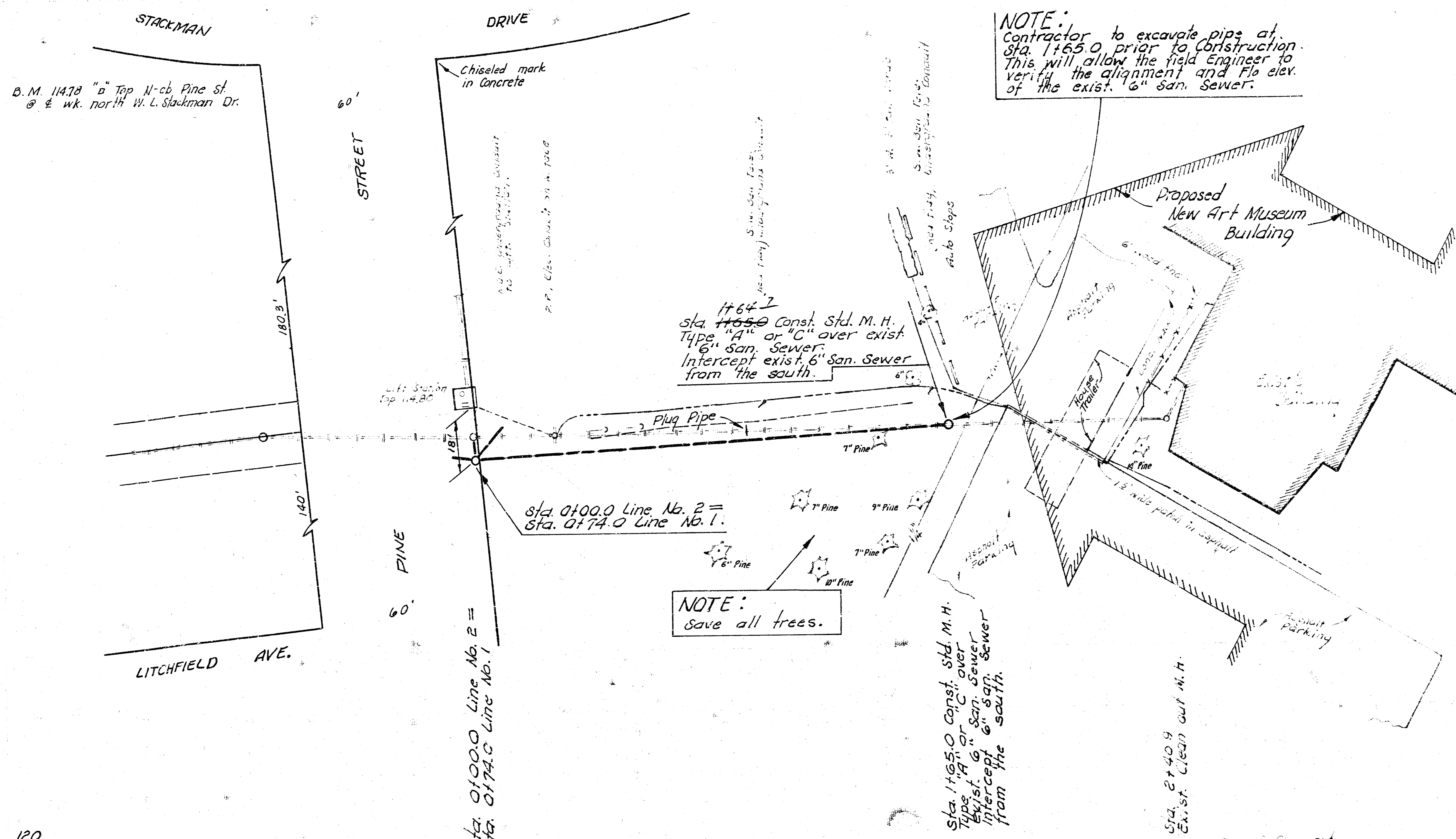
120  
115  
110  
105

120  
115  
110  
105

Basement floor Proposed Art Museum Elev. 103.60



MID-AMERICA ALI. INDIAN CENTER  
 SANITARY SEWER  
 PROJECT NO. WMKB 525 430 5/6



Plan Scale 1" = 20' Horiz.  
Profile Scale 1" = 5' Vert.

NOTE: Contact "Ross Tyson" for locations of S.W. Bell Tele. underground conduits. Phone No. 268-1485.

120  
115  
110  
105  
100

120  
115  
110  
105  
100

MID-AMERICA ALL INDIAN CENTER  
SANITARY SEWER  
PROJECT NO. WMKB 525 430

